

The Mini-Nubian is a mid-sized goat being of mixed Nigerian Dwarf and Nubian origin. It is known for being a graceful, elegant animal standing between 23-31 inches and comes in any color or pattern of short, fine, glossy hair. This mid-sized goat is known for its ease of milking; producing a high quantity and quality of milk whose butterfat yield is similar to that of the standard Nubian.

Emphasis is placed on a structurally correct animal with a well-attached mammary that milks with ease. This breed was originally designed for small farms and homesteaders who milk by hand and needed a smaller animal for handling and feeding purposes.

The breed character that sets the Mini-Nubian apart from other Mini breeds, is a nose that is never dished, but slightly to strongly convex (with the strongly convex being more desirable), as well as distinctive, long, wide, and pendulous ears that when held along the face reach the end of the nose.

No part of the Mini-Nubian should be coarse, but instead dairy and refined (with masculinity for bucks); with soft supple skin and mammary, strong correct legs, wide flat bone throughout, sharp shoulder blending into a long and graceful neck, and ample width and depth for kidding and milking purposes.

**PLEASE NOTE:**

\*\*\*Both Generation **AND** Breed Standard **MUST** be met to enter each herdbook\*\*\*

REQUIREMENTS	EXPERIMENTAL	AMERICAN	PUREBRED
<b>Generation</b>	F1 +	F3 +	F6 +
<b>Percentage</b>	Any	Less than 70% or more than 30% of either parent breed.	Less than 70% or more than 30% of either parent breed.
<b>Breed Character</b>	Any	$\frac{3}{4}$ drop or Pendulous ear Ear meets at start of nostril Straight or Convex nose	Pendulous ear Ear meets end of mouth Convex nose
<b>Height</b>	Any	Max: Does 29" / Bucks 31"	Max: Does 29" / Bucks 31"

**\*\*NOTE: For Purebred Herdbook:**

\* Ears must be pendulous and must reach the end of the mouth at minimum as an adult, with the ideal ear being longer.

- \* When registering kids, ears should lay past the nose or they will not be at the minimum length by maturity.
- \* Bucks may reach to the beginning of the nostril at minimum with the ideal ear being longer than the mouth.

## **DISQUALIFICATION FROM AMERICAN OR PUREBRED HERDBOOKS**

Animals will be disqualified from American or Purebred herdbook and placed into the Experimental or American herdbook despite generation if they have any of the following:

### **Disqualified from AMERICAN herdbook if:**

- Animal is over 70% or under 30% of either parent breed.
- Animal has ears that fit the airplane or drop (except  $\frac{3}{4}$  drop) categories.
- Animal that has ears that do not come to at least the start of the nostril.
- Animal that has a dished nose.
- Animal is over height.

### **Disqualified from PUREBRED herdbook if:**

- Animal is over 70% or under 30% of either parent breed
- Animal has ears that fit into Airplane, Drop, or  $\frac{3}{4}$  Drop
- Animal with ears that do not meet together at the end of the mouth
- Animal that has a dished or straight nose
- Animal is over height

**\*\*NOTE ON HEIGHTS: Currently MDGA does not require heights to be recorded with the registry except in the instance of milk testing and live shows. Final animal height is not achieved until maturity (3-4 years old). It is the breeder's responsibility to ensure their animals are within proper heights, and to submit them to the registry to have herdbooks changed if it is known they are over height.**

## **PROGENY OF DEMOTED HERDBOOK ANIMALS**

If an animal is demoted to Experimental or American due to not meeting the breed standard, they will receive an asterisk, \* at the end of their registration number. If the demoted animal's offspring meets generation AND breed standard, the offspring will then be placed in the proper herdbook. If the offspring does not meet the standard and/or generation, then they will be put into the herdbook that they meet requirements.

If any animal applying for the Purebred herdbook has  $\frac{3}{4}$  ears and/or ears do not meet to the end of the mouth, they will be moved to the American herdbook provided they meet the additional requirements.

## EAR DESIGNATION EXAMPLES AND DESCRIPTIONS

**NOTE:** *\*\*Currently all 1/4, 1/2 & 2/3 options on the registration form meet the requirement for DROP designation\*\**

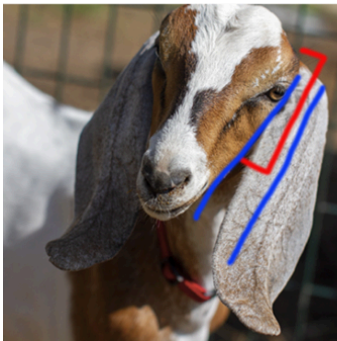
This image shows the difference in the space between the ear and face as well as how/where the ear base meets the head that helps determine how the ears will be judged.

- **Pendulous:** Parallel/nearly parallel to the face, held closely to the head. Base of ear held very close to the head.
- **3/4 Drop:** Ears veer away from the face at more of an angle versus parallel. Base of ear not as tightly held to the head.
- **Drop:** Ears veer very far from the face. Base of ear comes away from the head.

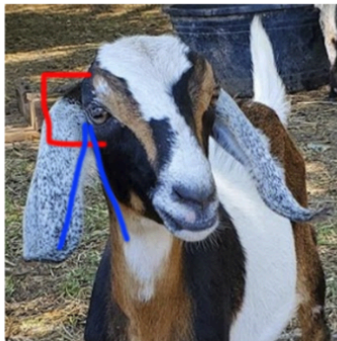
The ear, at the base, should come down snug against the head, following the face. Notice the ear pulls away in the 3/4 and Drop designations.

The pendulous ear should be parallel with the face. 3/4 extends slightly out. Drop ears extend a good bit from the face as well as more lift at the base.

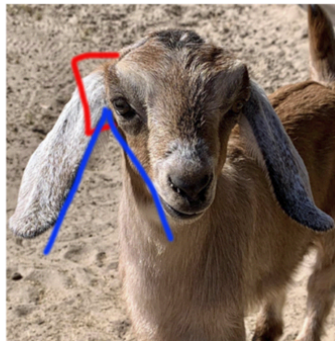
Pendulous



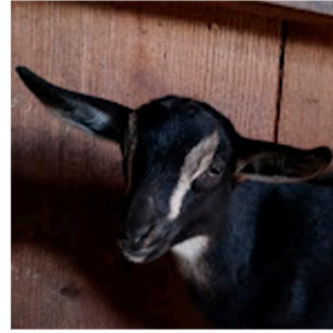
3/4 Drop



Drop

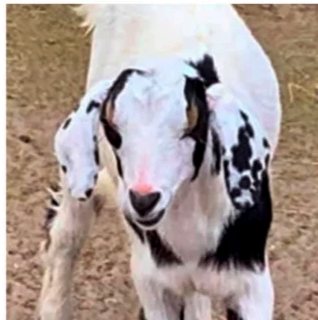
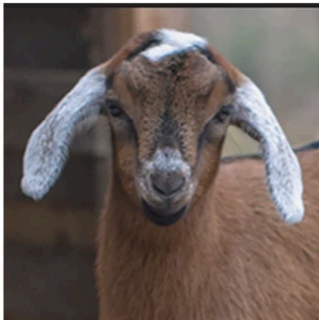


**AIRPLANE** – Ears that proceed straight out from the head (as in airplane wings). They may have the slightest drop downward or the slightest rise upward a bit.



**DROP** – This designation encompasses anything between Airplane and  $\frac{3}{4}$  drop. These ears will have significant space between the head/face and ear when the ears are **at rest**, note they are not parallel with the head and flare out from the base of the ear where it meets the head. This designation will also include ears that are too short even though they may be close to the head or appear pendulous. Too short is anything less than meeting at the beginning of the nostril (for American) or meeting at the end of the mouth. (for Purebred).

*\*\*Currently all  $\frac{1}{4}$ ,  $\frac{1}{2}$  &  $\frac{2}{3}$  options on the registration form meet the DROP category\*\**



**$\frac{3}{4}$  DROP** – This designation is allowed in the Experimental and American herdbook only. All American animals must have  $\frac{3}{4}$  drop or pendulous ears. The difference between Drop and  $\frac{3}{4}$  Drop is that  $\frac{3}{4}$  drop ears must reach the beginning of the nostril and have minimal space between the face and the ears



and lay more parallel to the face. Note the difference in space between the ear and face in the drop and  $\frac{3}{4}$  drop picture examples. American herdbook should have as close to pendulous as possible so that when you get to Purebred, ears will be ideal.



**PENDULOUS** – Long ears that are set close at the area of attachment to the head and follow that closeness down the face. The ears will stay close to the head as they flow down, hanging down and flaring out and forward at their rounded tip, creating a “bell” shape. Ears must also reach the end of the mouth at minimum, but ideally going beyond, when held parallel along the face (or past the nose for kids, as ears will shorten a bit as they mature).

Ideal ears would come down **parallel** (straight) from the head without flaring away from the face (when at rest) as this keeps the ears close to the head (not flaring away from the head). Acceptable ears for the PB herdbook can have minimal space between the face/head and ears as long as they hang straight or parallel to the face. If the ears start to veer from being **parallel** to the face too much, they will be placed in  $\frac{3}{4}$  or Drop (depending on how far from the head) and will not be accepted into the PB herdbook, rather being put into the American (if  $\frac{3}{4}$ ) or Experimental (if drop) books.



**EAR LENGTH:** When entering the Purebred herdbook, as kids, ears should reach the end of the nose and touch at the tips when held along side the face. In order for ears to reach the end of the mouth by maturity, they must reach past the nose and touch, as a kid. For an adult entering the PB herdbook, ears must reach the end of the mouth at minimum, past the mouth is ideal. For adult BUCKS entering the PB herbook, their ears must come to the beginning of the nostril at minimum.

The following ear lengths are accepted into the American book as they reach at minimum, the beginning of the nostril but will not necessarily reach the end of the mouth and touch. They must also be at least  $\frac{3}{4}$  drop or pendulous to be in the American book.

**STRAIGHT and DISHED NOSES:** Dished noses are acceptable in the Experimental herdbook only. Straight or Convex noses are accepted in the American herdbook. Any animals entering the American herdbook that have dished noses, will be placed in the Experimental herdbook. Any animals entering the Purebred books that have dished noses will be dropped to Experimental despite generation. If an adult animal is entering the Purebred herdbook and has a straight nose, they will be placed into the American herdbook provided they have the proper ears, otherwise they will be placed into the Experimental book.

**CONVEX NOSE:** The ideal nose will have a strong curvature or arched look to it (ideal). However, concerning the Purebred herdbook, as long as there is ANY, even slight, curvature, the animal will be accepted. Mini Nubians noses do not fully mature until well into adulthood. The registrars are fully aware of this and take this into consideration when evaluating kid and adult pictures submitted for the Purebred herdbook.