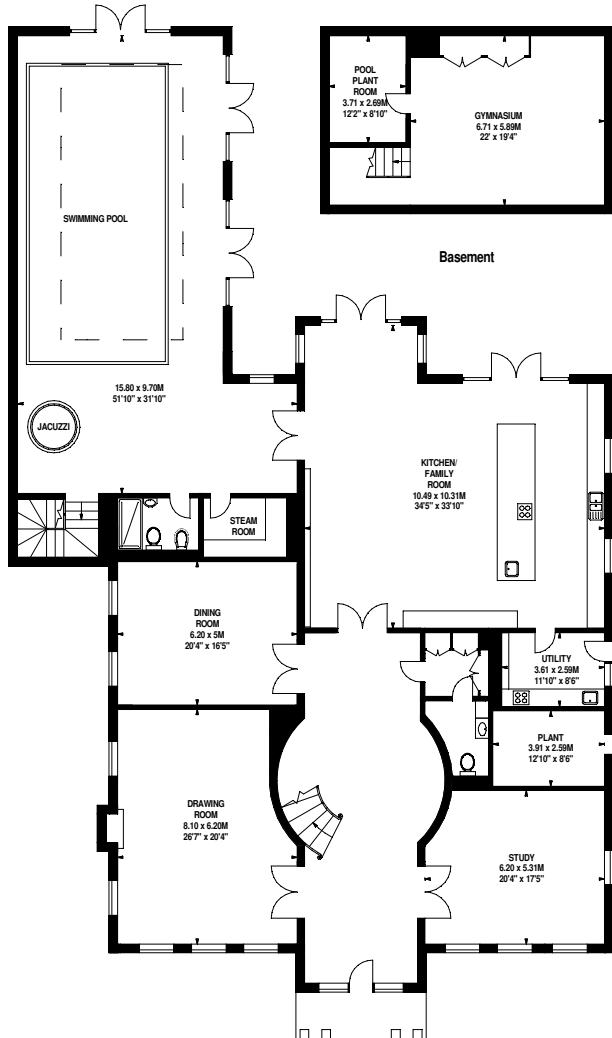
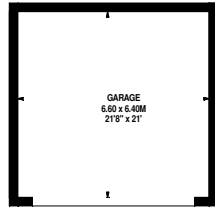


Coombe Park, KT2

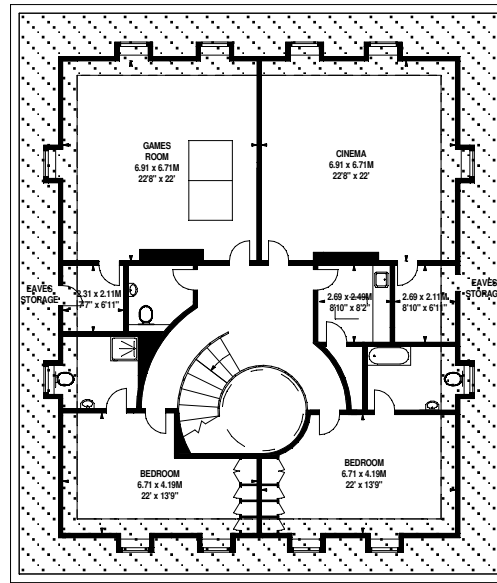
Approximate Gross Internal Area 1157 sq m / 12454 sq ft
Including Eaves Storage of 99 sq m / 1066 sq ft

Approximate Garage Area 42 sq m / 452 sq ft

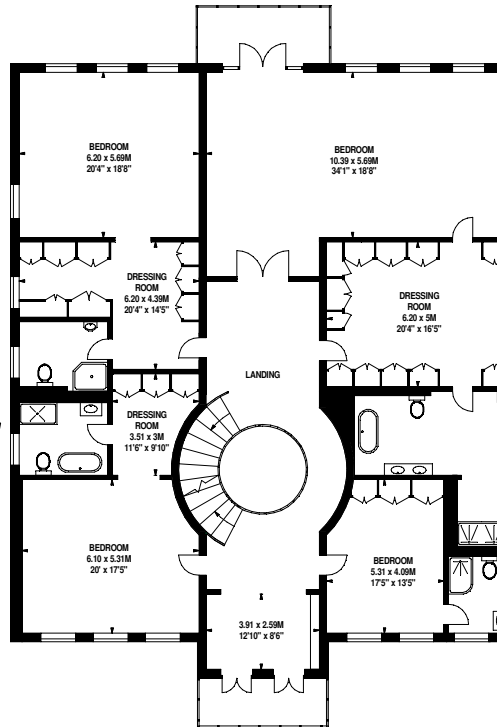
Under 1.5m head height



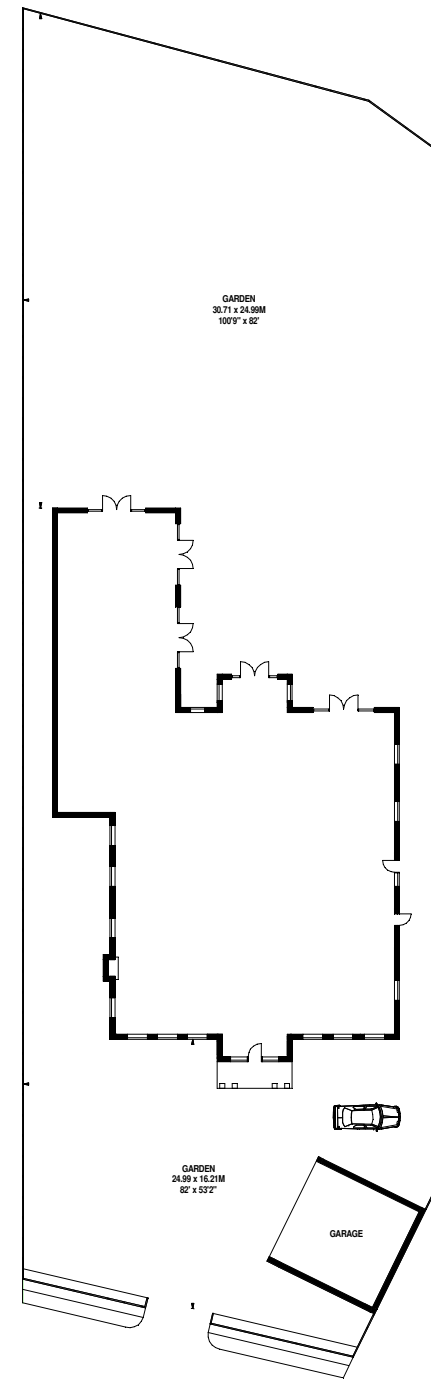
Basement



Second Floor



First Floor



Site Plan

Ground Floor