



Australian Government

BUILDING OUR FUTURE



Transport for NSW

M12 Motorway

Community update | November 2021



Artist impression of view east along The Northern Road with the M12 Motorway

The M12 Motorway project is now a step closer to awarding construction contracts following the recent issue of tenders to the shortlisted companies to build two of the three sections of the new motorway.

Successful contractors will be announced early next year with construction to begin from mid-2022.

The project received approval from NSW and Australian Governments in April 2019 and June 2020 to proceed with a 16-kilometre dual carriage motorway to connect the future Western Sydney International Airport with

the M7 Motorway at Cecil Hills and The Northern Road at Luddenham. The motorway features two lanes in each direction with capacity for future widening to three lanes. The approved design reflects the changes made in response to community feedback received during the respective environmental display periods in 2019 and 2020.

Confirmed design changes

In addition to the key design amendments already made in response to the Environmental Impact Statement (EIS) consultation process, additional changes made since the Amendment Report display now include:

- An interchange between Elizabeth Drive and the M12 Motorway at the airport entry to improve connectivity between the M12 Motorway and Elizabeth Drive. The interchange will provide direct access into the airport main access road from Elizabeth Drive.
- A revised interchange design between the M12 Motorway and the airport access road.
- A four and a half (4.5) metre wide shared user path on Elizabeth Drive towards the M7/M12 Motorway interchange

Images showing these design changes are included in the M12 Motorway project map (pages 5-8).

Site establishment and electrical relocation

Early works for the project previously scheduled to start at the end of September started on 26 October and will continue for six months. Work involves the establishment of a site compound at 2778 The Northern Road,

Luddenham and electrical relocation on Luddenham Road and Elizabeth Drive. Please note that work in this area will involve tree clearing at the southern verge on Elizabeth Drive. Be mindful of traffic conditions if you're driving in the area as there is a speed reduction along a section of Elizabeth Drive, and other projects that may also be working there including Sydney Water.

Other work programs

We are continuing with a number of investigation work including:

- Aboriginal salvage work (postponed from August)
- potholing (postponed from August)
- Geotechnical investigations

Communication Strategy now on the M12 portal

Did you know that the M12 Motorway's Overarching Communication Strategy (OCS) is online and open for feedback? This strategy will sit over all community engagement strategies developed during construction. Feedback received will be used to periodically review the OCS for recommendations and improvements. Head to <https://caportal.com.au/rms/m12>



M12 early works site compound at 2778 The Northern Road, Luddenham

Seed collection and propagation

We recognise that the M12 Motorway project takes place on land containing sensitive vegetation where it is critical we minimise impacts and replenish the amount of flora and greenery, where possible. To do this, we've adopted a proactive approach to vegetation and landscaping through an early seed collection and propagation program. By sourcing seed from areas where trees and vegetation will be removed the project can propagate, or source other planting along the project footprint, using plants suitable to the local environment.

One tree can make many, and this underpins the M12 project's seed collection and propagation strategy. To this end, local environmental and restoration company Toolijooa was brought on board early on in the project lifecycle to help with seed collection for the M12 Motorway. This allows the M12 Motorway project to achieve optimal results for planting and revegetation by the time the motorway opens.

Seed collection and propagation allows the M12 Motorway project to explore all opportunities for seeding, planting or banking that is appropriate to the surrounding landscape and in meeting project requirements.

The M12 project team took on a customised approach to seed collection and propagation by analysing the existing flora and fauna in the area before determining what is appropriate for seeding, planting or banking under the project's Conditions of Approval, and what will be resilient against local climate, the existing landscape and future uses in the area. In this sense, the necessary removal of trees will be replaced to ensure there is no overall loss of vegetation. This allows the project to produce best possible outcomes for landscaping along the M12 during construction – which is vital to the project's conservation and sustainability commitments.

Our methods include:

- **Seeding**, known as sowing into the landscape. This typically works better for trees than for grass.
- **Planting**, where we propagate those grown from seeds (not cutting) into plants. We plant in pot then remove to plant again.
- **Banking**, where we look at reuse opportunities such as swapping with nurseries or donating to conservation programs to achieve a more sustainable, equitable outcome during times of scarcity.

Toolijooa is currently exploring all possible opportunities for salvage, collection and replanting in ways that are sustainably sourced and adaptable. Our approach must also meet the needs of nearby infrastructure such as limiting wildlife and avian attraction for aviation safety. To date, seed collection has been conducted at Kemps Creek, Cecil Park, West Hoxton, Hoxton Park, Cecil Park, Cecil Hills, Austral, Western Sydney Parklands, Blacktown, Penrith, Horsley Park and Glenmore Ridge.

More information on vegetation including species is included in our Place, Design and Landscape Plan on display until **28 November 2021**.

Images below show the long term process used to determine overall quantity and best ways of using seeds.



Bag raw seeds collected



Group and label seeds collected



Testing seeds to understand potential growth

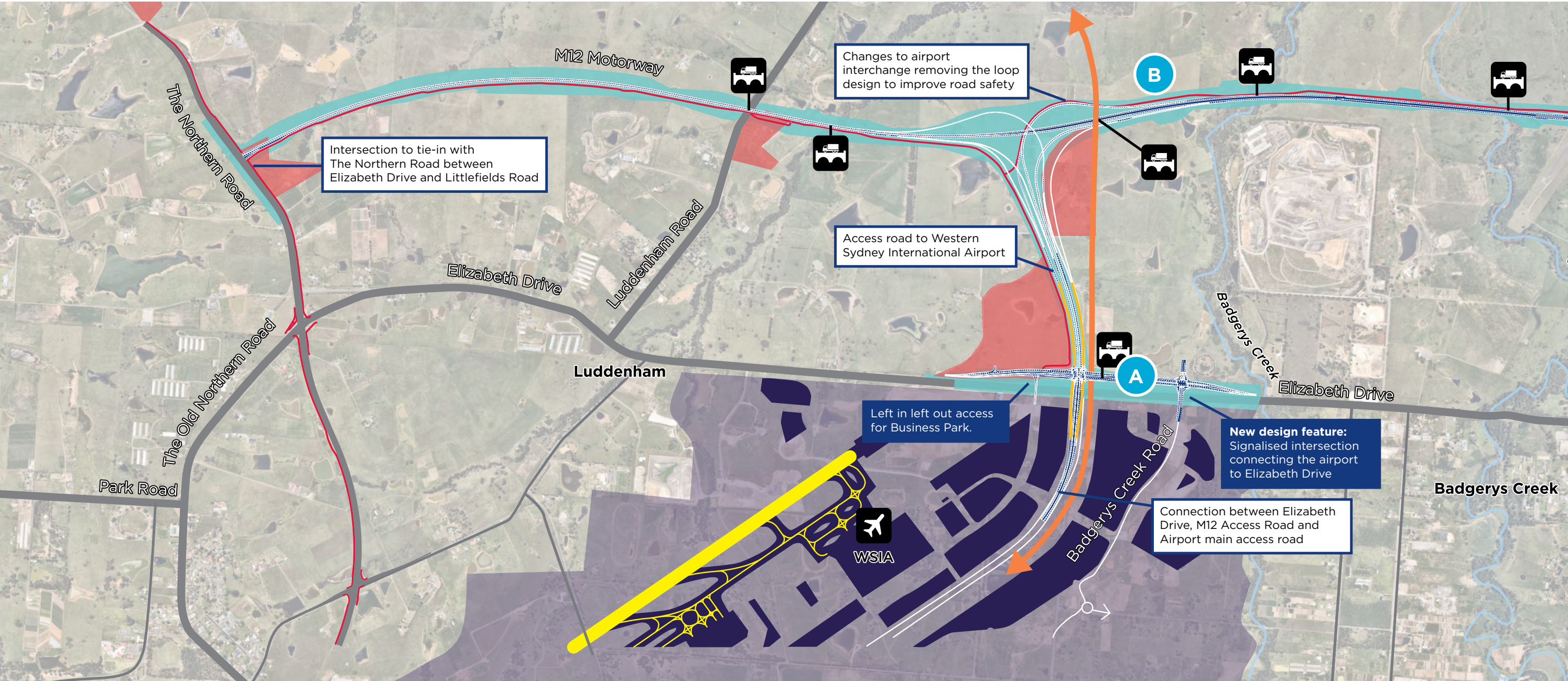


Putting seeds into tubes



Replant in desired areas

M12 Motorway – approved design

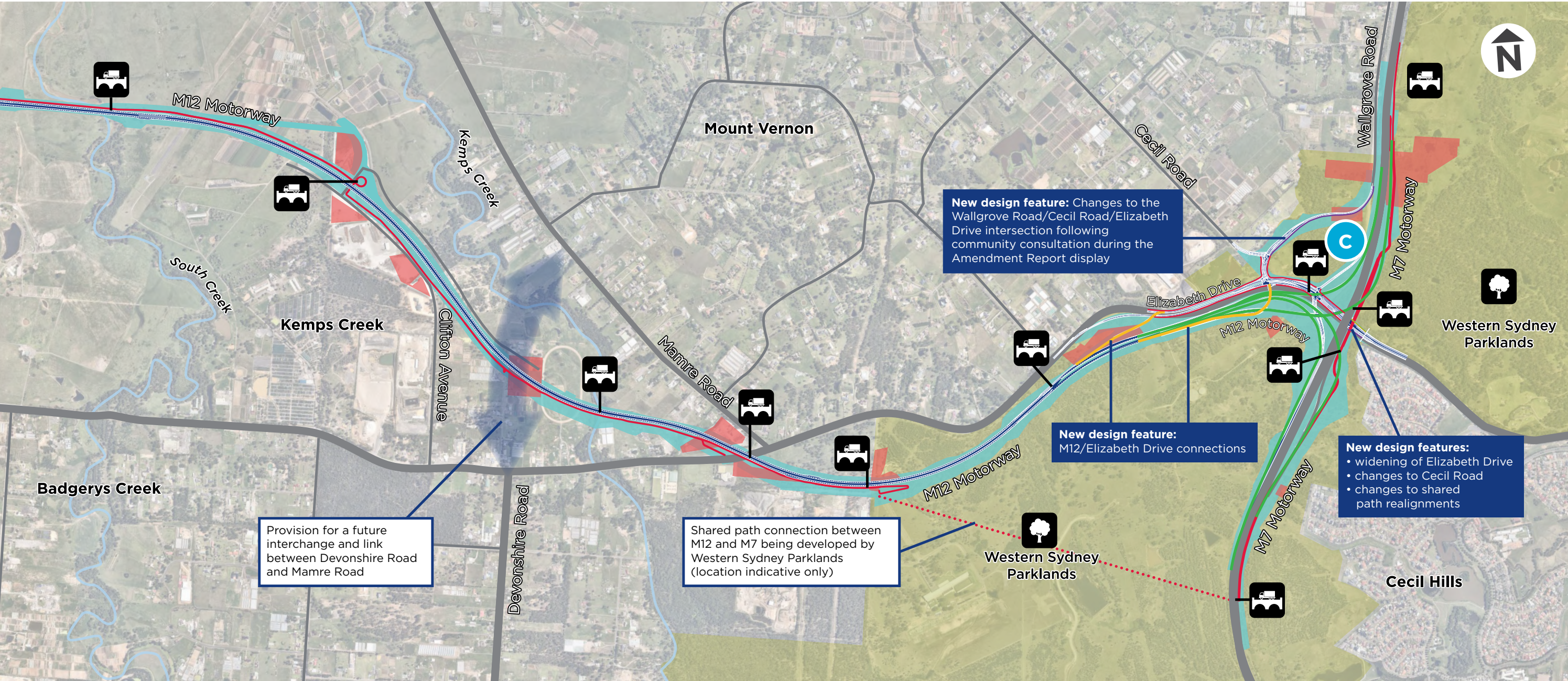


Artist impression of view south from Airport access road to Elizabeth Drive interchange and entrance to the Western Sydney International Airport



Artist impression of the Airport interchange facing west

M12 Motorway - approved design



KEY

M12 Motorway

Western Sydney International Airport (WSIA)

Compound or storage site

Land re-zoned permanently as Motorway

Shared path

M12/Elizabeth Drive connections

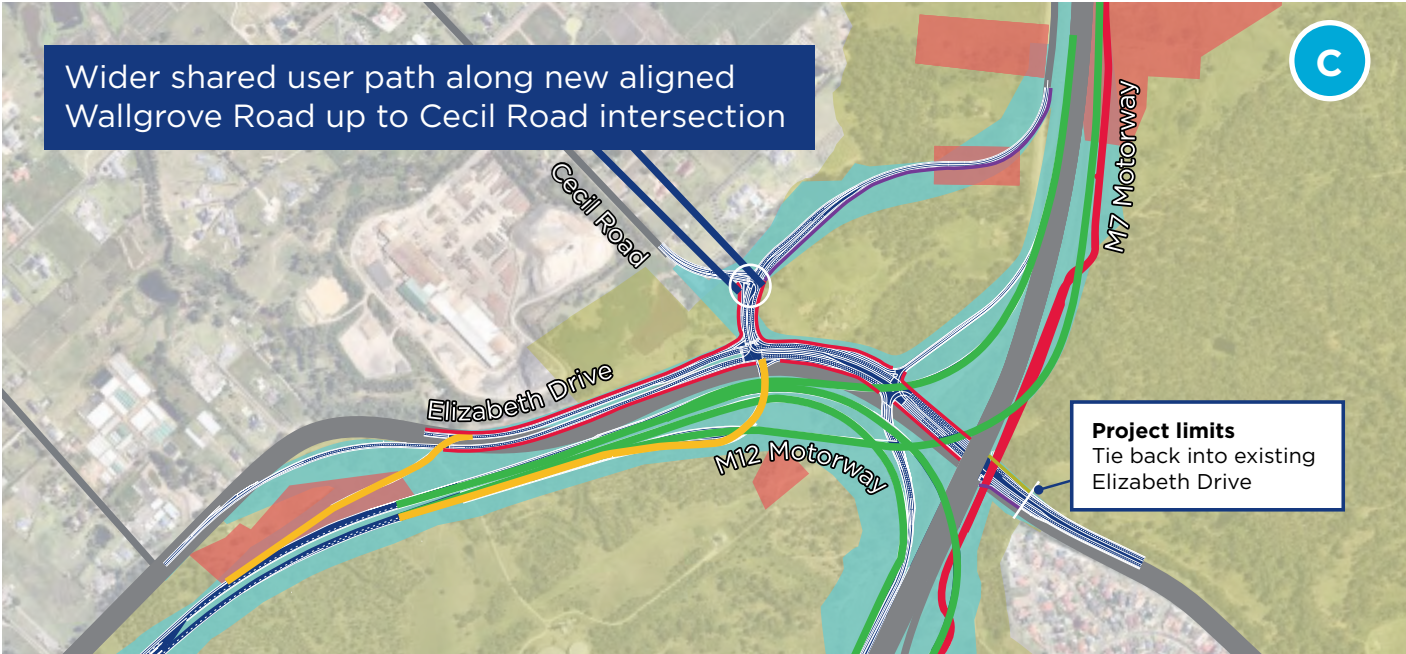
M7/M12 connection (subject to unsolicited proposal to widen the M7)

New aligned user path

Existing footpath

Bridges

Sydney Metro - Western Sydney Airport



M7 Motorway/M12 Motorway/Elizabeth Drive interchange (Artist impression, subject to change in detailed design and planning approval)

The M12 Place, Design and Landscape Plan

Our Place, Design and Landscape Plan (PDLP) has been five years in the making. This week, the plan goes on public exhibition for feedback, and provides a first look at our landscape design, public art elements and a new pedestrian and cyclist route that will be built as part of the M12 Motorway project.

The design illustrated in the PDLP aims to bring to life the rich history of the Western Parkland City, and to tell the unique stories that exist within the local landscape that will be used to create a unique and vibrant transport link. Our M12 PDLP presents many firsts for a motorway urban design plan including design directions underpinned by a range of local heritage such as space archaeology through to a locally endorsed Aboriginal narrative, harnessed through working with artists and knowledge holders who are connected to communities near the M12 Motorway.

Key features of the plan include:

- A new shared user path for (pedestrian and cyclist) link along the corridor separated from the main traffic lanes, including connections to existing and future shared user path networks
- Wayfinding, signage and lighting – relating back to local heritage and culture and drawing on unique features while being intuitive responsive to the day/night experience
- Planting and revegetation through early seed collection and propagation

- Interpretation nodes that incorporate the built landscape with Aboriginal and non-Aboriginal heritage interpretation design and showcasing the six seasons of planting which reflects the calendar observed by many Aboriginal groups
- The Great Emu sculpture: a sophisticated landmark that celebrates the Darug Community's sacred creation stories of the Great Emu constellation
- Footprints on Country – Emu footprints of varying scales used to reflect the experiences of people travelling along songlines and singing Country
- Six overbridge screens for the overpass bridges to bring together the Great Emu story.

We believe the M12 Motorway sets a benchmark when it comes to truly designing with Country by incorporating these values at the very start of the project. There is a strong theme of interconnectedness, of Connection to Country, of culturally informed design – to embody both Aboriginal and non-Aboriginal history in the overall design of the motorway corridor.

We are excited to share this plan with you, a plan that will enable travellers and visitors to the Western Parkland City to immerse in the rich history and the local stories of this magnificent land.

The PDLP is on display for four weeks. For more information including the full PDLP document, artist impressions, videos and an interactive map, head to **nswroads.work/m12pdlp**.

Feedback and submissions close midnight
Sunday 28 November 2021.



Artist impression of aerial view west over Kemps Creek and nearby interpretation node



Artist impression of shared user path east along the M12 Motorway



Artist impression of the Airport interchange facing north-east with the “Emu in the Sky” artwork.

Other projects in the area



Artist impression of aerial view showing The Northern Road and the M12 Motorway

The Northern Road

The Australian and NSW governments are upgrading The Northern Road as part of the Western Sydney Infrastructure Plan (WSIP), a \$4.1 billion road investment program. The project will upgrade around 35 kilometres of The Northern Road between The Old Northern Road at Narellan and Jamison Road at South Penrith. The project will see The Northern Road upgraded to a minimum four-lane divided road, and up to an eight-lane divided road with dedicated bus lanes.

The upgrade to The Northern Road will also include interchanges with the new M12 Motorway, the M4 Motorway and Bringelly Road. The final stage of the upgrade, between Littlefields Road and Glenmore Parkway, is expected to be open to traffic in late 2021.

More information can be found at <https://roads-waterways.transport.nsw.gov.au/projects/the-northern-road/index.html>



Aerial view of the Western Sydney Airport taken in September

Western Sydney International Airport

Construction of Western Sydney International (Nancy-Bird Walton) Airport is progressing rapidly and is on track to open in 2026. To date, the project has moved more than 19 million cubic metres of earth out of approximately 26 million cubic metres. The works currently being undertaken include drainage installation and compacting layers for terminal construction.

Upcoming works include terminal construction and paving the airport's 3.7km runway and rapid-exit taxiways which are scheduled for later this year and in early 2022.

For more information about the airport, please visit the website westernsydney.com.au or subscribe to our community newsletter – Gateway via <https://westernsydney.com.au/subscribe-for-updates>. Alternatively, you can scan the QR code to stay updated.





Artist impression of view of Luddenham Metro Station

Sydney Metro – Western Sydney Airport

Sydney Metro – Western Sydney Airport will become the transport spine for Greater Western Sydney, connecting communities and travellers to the new Western Sydney International (Nancy-Bird Walton) Airport and the growing region.

The project will deliver six new stations at St Marys, Orchard Hills, Luddenham, Airport Business Park, Airport Terminal and the Western Sydney Aerotropolis.

The Luddenham Station will be located near Luddenham Road, between the Warragamba Pipeline and the new airport. The 23 kilometre new railway is planned to open at the same time as passenger services start at the airport. More information can be found at sydnymetro.info/westernsydneyairportline



Artist impression of the upgraded intersection at Luddenham and Mamre roads

Mamre Road

Transport for NSW is planning to upgrade Mamre Road between the M4 Motorway, St Clair and Erskine Park Road, Erskine Park to reduce congestion and improve safety and travel times.

Mamre Road is an important transport corridor in the Western Parkland City, and is a key connector to the Western Sydney Employment Area and Western Sydney Aerotropolis. The upgrade between the M4 Motorway and Erskine Park Road has been fast-tracked as part of the NSW Government's Jobs and Infrastructure Acceleration Fund. Construction is planned to start in 2022 and be completed in 2025.

More information can be found at nswroads.work/mamreroadupgrade

Elizabeth Drive Upgrade

The Elizabeth Drive project team are currently preparing the concept road design and performing an environmental assessment. Once this is complete we will be inviting the community in early-mid 2022 to comment on the concept design and the Review of Environmental Factors report. The NSW Government is funding the development of the ultimate Elizabeth Drive corridor between Cecil Hills and Luddenham to support the new Western Sydney International Airport and the Western Parkland City vision.

More information can be found at <https://roads-waterways.transport.nsw.gov.au/projects/elizabeth-drive-upgrade>

Next steps



Working within COVID guidelines

While some of our previously scheduled work has been delayed due to the ongoing COVID-19 pandemic and restricted movements in and out of the impacted Local Government Areas, Transport for NSW and the M12 project will continue to monitor and adapt its program in line with the latest Public Health Order.

The safety of our workers and the community is paramount, and protocols are in place to ensure workers and contractors proceed safely at all times.

For more information

If you have any enquiries, feedback or concerns, or would like to sign up for our emailing list, please:



1800 517 155



m12motorway@transport.nsw.gov.au



nswroads.work/m12

Alternatively, you can scan the QR code to stay updated.



131 450

This document contains important information about road projects in your area. If you require the services of an interpreter, please contact the Translating and Interpreting Service on 131 450 and ask them to call the project team on 1800 517 155. The interpreter will then assist you with translation.

November 2021
21.272



Privacy Transport for NSW ("TfNSW") is subject to the Privacy and Personal Information Protection Act 1998 ("PPIP Act") which requires that we comply with the Information Privacy Principles set out in the PPIP Act. All information in correspondence is collected for the sole purpose of assisting in the delivery of this project. The information received, including names and addresses of respondents, may be published in subsequent documents unless a clear indication is given in the correspondence that all or part of that information is not to be published. Otherwise Transport for NSW will only disclose your personal information, without your consent, if authorised by the law. Your personal information will be held by Transport for NSW at 27 Argyle Street, Parramatta NSW 2150. You have the right to access and correct the information if you believe that it is incorrect.