

SANTA CRUZ COUNTY GDP SUMMARY ANALYSIS

1. TOTAL GDP TREND (Thousands \$)

Year	Total GDP	Private Industries	Government	YoY Growth %
2001	952,573	746,249	206,324	N/A
2010	1,386,426	1,009,730	376,697	5.9
2015	1,621,195	1,187,048	434,146	4.7
2020	2,103,422	1,584,994	518,428	3.8
2024	2,843,969	2,246,719	597,250	4.6

2. INDUSTRY BREAKDOWN - 2024 (Thousands \$)

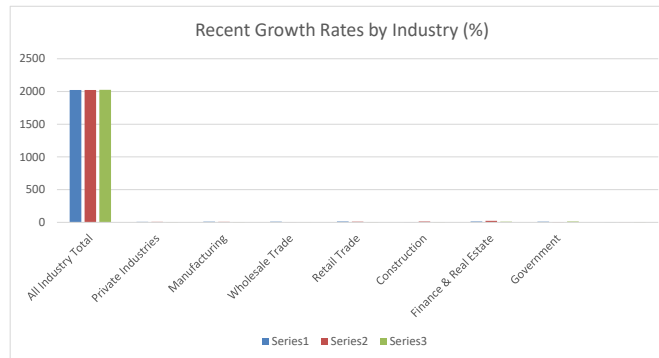
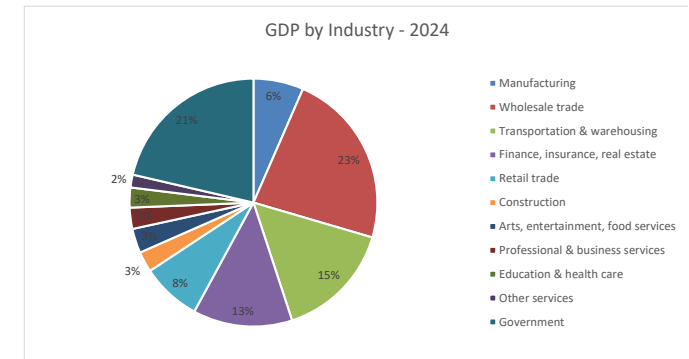
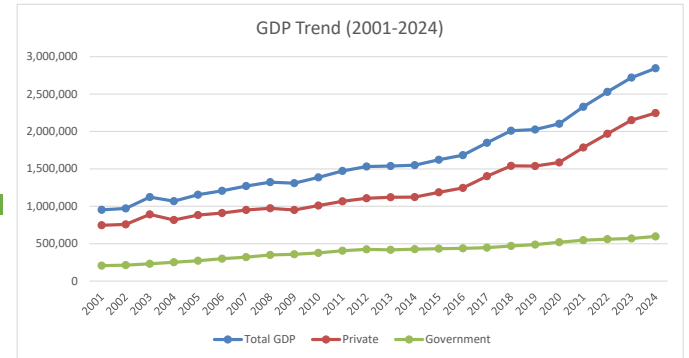
Industry	GDP 2024	% of Total
Manufacturing	182,909	6.4%
Wholesale trade	642,468	22.6%
Transportation & warehousing	430,753	15.1%
Finance, insurance, real estate	362,414	12.7%
Retail trade	217,925	7.7%
Construction	74,825	2.6%
Arts, entertainment, food services	88,963	3.1%
Professional & business services	77,257	2.7%
Education & health care	72,722	2.6%
Other services	46,664	1.6%
Government	597,250	21.0%

4. RECENT GROWTH RATES (%)

Industry	2022	2023	2024
All Industry Total	8.5	7.6	4.6
Private Industries	10.4	9.1	4.5
Manufacturing	10.4	3.3	3.2
Wholesale Trade	13.2	10.5	6.7
Retail Trade	3.6	13.6	5.7
Construction	14.2	23.4	10.7
Finance & Real Estate	10.7	5.3	12.4
Government	2.4	2.0	4.7

3. ANNUAL GDP TIME SERIES

Year	Total GDP	Private	Government
2001	952,573	746,249	206,324
2002	970,376	757,841	212,534
2003	1,123,085	892,218	230,867
2004	1,068,101	817,515	250,586
2005	1,153,879	882,417	271,462
2006	1,207,833	909,337	298,496
2007	1,270,586	950,195	320,391
2008	1,323,607	973,598	350,008
2009	1,309,628	950,554	359,074
2010	1,386,426	1,009,730	376,697
2011	1,473,061	1,066,719	406,342
2012	1,530,550	1,106,986	423,564
2013	1,537,917	1,119,845	418,072
2014	1,549,101	1,122,402	426,699
2015	1,621,195	1,187,048	434,146
2016	1,683,501	1,245,201	438,299
2017	1,848,358	1,401,461	446,897
2018	2,010,864	1,541,118	469,747
2019	2,025,498	1,537,396	488,101
2020	2,103,422	1,584,994	518,428
2021	2,330,703	1,784,696	546,007
2022	2,528,980	1,969,623	559,357
2023	2,720,096	2,149,828	570,268
2024	2,843,969	2,246,719	597,250



SANTA CRUZ COUNTY CURRENT-DOLLAR GROSS DOMESTIC PRODUCT (GDP)

	2001	2002	2003	2004	2005	2006	2007	2008	2009	2010	2011	2012	2013	2014	2015	2016	2017	2018	2019	2020	2021	2022	2023	2024	
All industry total	952,573	970,376	1,123,085	1,068,101	1,153,879	1,207,833	1,270,586	1,323,607	1,309,628	1,386,426	1,473,061	1,530,550	1,537,917	1,549,101	1,621,195	1,683,501	1,848,358	2,010,864	2,025,498	2,103,422	2,330,703	2,528,980	2,720,096	2,843,969	
Private industries	746,249	757,841	892,218	817,515	882,417	909,337	950,195	973,598	950,554	1,009,730	1,066,719	1,106,986	1,119,845	1,122,402	1,187,048	1,245,202	1,401,461	1,541,118	1,537,396	1,584,994	1,784,696	1,969,623	2,149,828	2,246,719	
Agriculture, forestry, fishing and hunting	11,901	13,532	16,280	13,729	13,841	15,504	6,599	9,323	7,492	7,436	(D)	5,084	3,192	3,614	13,630	17,855	17,660	18,563	23,830	24,386	21,230	25,349	26,732	22,937	
Mining, quarrying, and oil and gas extraction	93	0	0	0	0	52	117	164	179	167	414	782	2,013	3,079	7,737	59,959	19,841	1,969	(D)	(D)	(D)	(D)	(D)	4,276	
Utilities	3,506	3,737	3,058	1,170	1,327	1,046	863	1,379	1,158	1,131	1,063	978	1,381	5,021	4,968	5,336	7,127	9,965	12,942	15,990	(D)	(D)	(D)	11,977	
Construction	21,878	24,756	32,548	29,086	32,693	45,552	39,608	56,661	66,182	51,471	62,647	34,027	27,980	34,046	35,700	31,173	29,837	35,272	36,827	37,972	47,943	54,755	67,586	74,825	
Manufacturing	49,154	35,338	37,021	30,642	29,877	35,619	36,390	33,596	32,339	34,612	35,606	47,519	44,083	43,612	49,464	62,405	88,257	107,901	122,782	132,470	155,467	171,659	177,248	182,909	
Durable goods manufacturing	43,171	28,460	31,353	24,772	23,199	26,203	30,412	23,133	20,500	19,844	20,569	31,410	27,576	24,486	25,655	35,979	66,584	81,925	94,031	117,546	132,954	144,276	147,407	152,082	
Nondurable goods manufacturing	5,983	6,878	5,668	5,870	6,678	9,416	5,978	10,463	11,839	14,768	15,037	16,110	16,507	19,126	23,809	26,426	21,673	25,976	28,751	14,924	22,513	27,383	29,842	30,827	
Wholesale trade	191,309	191,445	208,339	186,958	202,618	193,835	230,217	238,782	254,287	279,103	270,050	283,934	289,951	289,356	311,073	350,685	408,060	434,236	472,272	491,859	481,455	544,798	601,960	642,468	
Retail trade	107,335	113,276	195,572	140,434	148,224	158,857	164,474	163,296	144,004	161,512	149,110	147,512	138,877	136,377	131,707	133,828	156,923	163,355	163,839	179,698	175,154	181,523	206,250	217,925	
Transportation and warehousing	89,723	81,226	100,367	107,905	109,085	120,868	115,172	127,317	121,375	(D)	(D)	(D)	(D)	209,575	215,539	223,091	243,241	254,803	218,272	217,036	331,215	388,715	430,353	430,753	
Information	8,514	8,981	8,390	10,007	12,048	11,875	11,556	14,015	14,381	13,862	13,228	14,838	15,671	16,813	17,457	15,146	12,425	14,231	12,017	14,403	11,466	11,065	10,610	10,631	
Finance, insurance, real estate, rental, and leasing	167,329	182,073	171,593	170,021	189,132	171,412	181,732	185,649	170,253	160,646	188,778	231,199	229,952	214,183	230,443	231,176	244,954	244,874	246,734	277,170	276,521	306,224	322,436	362,414	
Finance and insurance	51,048	65,533	63,112	60,453	73,243	39,452	36,202	28,324	28,518	22,013	38,559	45,982	44,707	44,767	45,799	51,787	59,720	63,962	56,685	60,058	56,701	84,284	75,997	98,422	
Real estate and rental and leasing	116,282	116,540	108,481	109,568	115,889	131,960	145,530	157,324	141,735	138,632	150,219	185,217	185,245	169,416	184,644	179,388	185,234	180,912	190,049	217,112	219,820	221,940	246,439	263,991	
Professional and business services	28,543	30,423	34,924	41,536	50,018	60,373	62,585	53,373	49,358	(D)	50,087	(D)	45,761	45,884	46,873	48,079	47,876	49,694	48,844	48,448	58,585	61,699	72,437	77,257	
Professional, scientific, and technical services	20,098	22,224	(D)	(D)	(D)	(D)	(D)	(D)	(D)	(D)	20,228	(D)	(D)	23,239	(D)	27,597	25,533	25,591	24,956	(D)	27,041	29,860	33,309	35,918	
Management of companies and enterprises	(D)	(D)	(D)	(D)	(D)	(D)	(D)	(D)	(D)	(D)	573	(D)	(D)	(D)	(D)	0	(D)	(D)	(D)	(D)	729	1,691	3,528	4,048	
Administrative and support and waste management and remediation services	(D)	(D)	(D)	11,598	(D)	23,018	24,138	25,585	28,285	33,222	29,286	26,269	24,136	(D)	22,928	20,482	(D)	(D)	(D)	(D)	24,790	30,814	30,148	35,600	37,291
Educational services, health care, and social assistance	19,778	21,360	22,298	24,969	25,584	26,717	26,944	27,044	28,213	33,348	33,941	34,207	(D)	47,715	47,055	43,120	53,635	58,732	59,718	60,300	70,556	77,458	85,254	72,722	
Educational services	2,164	2,447	1,630	1,903	1,915	1,791	1,949	2,161	2,917	2,824	3,052	3,452	(D)	3,984	4,029	4,189	4,177	3,992	4,553	3,879	4,006	4,366	4,920	5,758	
Health care and social assistance	17,614	18,913	20,668	23,066	23,669	24,926	24,995	24,883	25,296	30,524	30,889	30,755	40,515	43,731	43,026	38,930	49,458	54,740	55,165	56,421	66,549	73,092	80,334	66,964	
Arts, entertainment, recreation, accommodation, and food services	28,358	30,419	41,897	40,829	46,824	44,636	51,542	41,049	38,049	37,702	40,659	42,927	43,164	42,142	49,355	47,463	51,805	54,949	64,452	50,186	99,322	87,171	84,617	88,963	
Arts, entertainment, and recreation	3,759	4,267	6,836	7,104	8,006	4,367	5,365	2,532	1,428	1,624	5,701	5,057	4,507	3,678	3,488	3,527	3,941	3,612	4,544	837	1,470	1,429	3,106	3,380	
Accommodation and food services	24,599	26,152	35,061	33,725	38,818	40,269	46,176	38,517	36,621	36,078	34,959	37,870	38,657	38,464	45,867	43,936	47,863	49,349	97,852	85,742	81,511	85,583			
Other services (except government and government enterprises)	18,829	21,277	19,930	20,228	21,148	22,990	22,395	21,951	23,283	26,200	27,579	30,448	30,937	32,033	32,462	32,764	31,924	34,584	35,027	33,106	35,150	40,180	46,200	46,664	
Government and government enterprises	206,324	212,534	230,867	250,586	271,462	298,496	320,391	350,008	359,074	376,697	406,342	423,564	418,072	426,699	434,146	438,299	446,897	469,747	488,101	518,428	546,007	559,357	570,268	597,250	
Addenda:																									
Natural resources and mining	11,994	13,532	16,280	13,729	13,841	15,556	6,716	9,487	7,671	7,603	(D)	5,866	5,205	5,644	14,952	20,934	25,397	78,522	43,671	26,356	(D)	(D)	(D)	27,213	
Trade	298,643	304,720	403,911	327,393	350,842	352,692	394,692	402,078	398,291	440,615	419,160	431,446	428,828	425,733	442,780	484,514	564,983	597,591	636,110	671,557	656,609	726,320	808,210	860,392	
Transportation and utilities	93,228	84,963	103,425	109,075	110,412	121,914	116,035	128,696	122,534	(D)	(D)	(D)	(D)	214,597	220,508	228,427	250,368	264,768	231,214	233,026	(D)	(D)	(D)	442,729	
Manufacturing and information	57,668	44,319	45,412	40,649	41,924	47,495	47,946	47,611	46,720	48,475	48,834	62,357	59,754	60,425	66,921	77,551	100,682	122,132	134,799	146,873	166,933	182,724	187,859	193,540	
Private goods-producing industries 2/	83,025	73,626	85,850	73,457	76,411	96,727	82,714	99,745	106,193	93,686	(D)	87,412	77,268	83,302	100,115	114,512	143,492	221,695	203,280	196,798	(D)	(D)	(D)	284,947	
Private services-providing industries 3/	663,223	684,216	806,368	744,057	806,007	812,610	867,481	873,854	844,362	916,043	(D)	1,019,574	1,042,578	1,039,100	1,086,933	1,130,689	1,257,969	1,319,423	1,334,117	1,388,196	(D)	(D)	(D)	1,961,772	

1/ Gross Domestic Product (GDP) is in thousands of current dollars (not adjusted for inflation). Industry detail is based on the 2017 North American Industry Classification System (NAICS).

2/ The private goods-producing industries consist of agriculture, forestry, fishing, and hunting; mining, quarrying, and oil and gas extraction; construction; and manufacturing.

3/ The private services-producing industries consist of utilities; wholesale trade; retail trade; transportation and warehousing, excluding Postal Service; information; finance and insurance; real estate, rental, and leasing; professional, scientific, and technical services; management of companies; administrative and support and waste management and remediation services; educational services; health care and social assistance; arts, entertainment, and recreation; accommodation and food services; and other services (except government and government enterprises).

(D) Not shown to avoid disclosure of confidential information; estimates are included in higher-level totals.

SANTA CRUZ COUNTY GROSS DOMESTIC PRODUCT (GDP) ANNUAL GROWTH (%)

	2002	2003	2004	2005	2006	2007	2008	2009	2010	2011	2012	2013	2014	2015	2016	2017	2018	2019	2020	2021	2022	2023	2024		
All industry total	1.9	15.7	-4.9	8.0	4.7	5.2	4.2	-1.1	5.9	6.2	3.9	0.5	0.7	4.7	3.8	9.8	8.8	0.7	3.8	10.8	8.5	7.6	4.6		
Private industries	1.6	17.7	-8.4	7.9	3.1	4.5	2.5	-2.4	6.2	5.6	3.8	1.2	0.2	5.8	4.9	12.5	10.0	-0.2	3.1	12.6	10.4	9.1	4.5		
Agriculture, forestry, fishing and hunting	13.7	20.3	-15.7	0.8	12.0	-57.4	41.3	-19.6	-0.8	(D)	(D)	-37.2	13.2	277.2	31.0	-1.1	5.1	28.4	2.3	-12.9	19.4	5.5	-14.2		
Mining, quarrying, and oil and gas extraction	0.0	(NM)	(NM)	(NM)	(NM)	125.2	40.4	9.0	-6.6	148.1	88.8	157.4	0.9	-34.9	133.0	151.3	675.0	-66.9	-90.1	(D)	(D)	(D)	(D)		
Utilities	6.6	-18.2	-61.7	13.4	-21.2	-17.4	59.7	-16.0	-2.4	-6.0	-7.9	41.2	263.6	-1.1	7.4	33.6	39.8	29.9	23.6	(D)	(D)	(D)	(D)		
Construction	13.2	31.5	-10.6	12.4	39.3	-13.0	43.1	16.8	-22.2	21.7	-45.7	-17.8	21.7	4.9	-12.7	-4.3	18.2	4.4	3.1	26.3	14.2	23.4	10.7		
Manufacturing	-28.1	4.8	-17.2	-2.5	19.2	2.2	-7.7	-3.7	7.0	2.9	33.5	-7.2	-1.1	13.4	26.2	41.4	22.3	13.8	7.9	17.4	10.4	3.3	3.2		
Durable goods manufacturing	-34.1	10.2	-21.0	-6.4	13.0	16.1	-23.9	-11.4	-3.2	3.7	52.7	-12.2	-11.2	4.8	40.2	85.1	23.0	14.8	25.0	13.1	8.5	2.2	3.2		
Nondurable goods manufacturing	15.0	-17.6	3.6	13.8	41.0	-36.5	75.0	13.2	24.7	1.8	7.1	2.5	15.9	24.5	11.0	-18.0	19.9	10.7	-48.1	50.9	21.6	9.0	3.3		
Wholesale trade	0.1	8.8	-10.3	8.4	-4.3	18.8	3.7	6.5	9.8	-3.2	5.1	2.1	-0.2	7.5	12.7	16.4	6.4	8.8	4.1	-2.1	13.2	10.5	6.7		
Retail trade	5.5	72.7	-28.2	5.5	7.2	3.5	-0.7	-11.8	12.2	-7.7	-1.1	-5.9	-1.8	-3.4	1.6	17.3	4.1	0.3	9.7	-2.5	3.6	13.6	5.7		
Transportation and warehousing	-9.5	23.6	7.5	1.1	10.8	-4.7	10.5	-4.7	(D)	(D)	(D)	(D)	(D)	2.8	3.5	9.0	4.8	-14.3	-0.6	52.6	17.4	10.7	0.1		
Information	5.5	-6.6	19.3	20.4	-1.4	-2.7	21.3	2.6	-3.6	-4.6	12.2	5.6	7.3	3.8	-13.2	-18.0	14.5	-15.6	19.9	-20.4	-3.5	-4.1	0.2		
Finance, insurance, real estate, rental, and leasing	8.8	-5.8	-0.9	11.2	-9.4	6.0	2.2	-8.3	-5.6	17.5	22.5	-0.5	-6.9	7.6	0.3	6.0	0.0	0.8	12.3	-0.2	10.7	5.3	12.4		
Finance and insurance	28.4	-3.7	-4.2	21.2	-46.1	-8.2	-21.8	0.7	-22.8	75.2	19.3	-2.8	0.1	2.3	13.1	15.3	7.1	-11.4	6.0	-5.6	48.6	-9.8	29.5		
Real estate and rental and leasing	0.2	-6.9	1.0	5.8	13.9	10.3	8.1	-9.9	-2.2	8.4	23.3	0.0	-8.5	9.0	-2.8	3.3	-2.3	5.1	14.2	1.2	1.0	11.0	7.1		
Professional and business services	6.6	14.8	18.9	20.4	20.7	3.7	-14.7	-7.5	(D)	(D)	(D)	(D)	(D)	0.3	2.2	2.6	-0.4	3.8	-1.7	-0.8	20.9	5.3	17.4	6.7	
Professional, scientific, and technical services	10.6	(D)	(D)	(D)	(D)	(D)	(D)	(D)	(D)	(D)	(D)	(D)	(D)	(D)	(D)	(D)	-7.5	0.2	-2.5	(D)	(D)	10.4	11.6	7.8	
Management of companies and enterprises	(D)	(D)	(D)	(D)	(D)	(D)	(D)	(D)	(D)	(D)	(D)	(D)	(D)	(D)	(D)	(D)	(D)	(D)	(D)	(D)	(D)	132.0	108.6	14.7	
Administrative and support and waste management and remediation services	(D)	(D)	(D)	(D)	(D)	(D)	4.9	6.0	10.6	17.5	-11.8	-10.3	-8.1	(D)	(D)	-10.7	(D)	(D)	(D)	(D)	(D)	24.3	-2.2	18.1	4.8
Educational services, health care, and social assistance	8.0	4.4	12.0	2.5	4.4	0.8	0.4	4.3	18.2	1.8	0.8	(D)	(D)	-1.4	-8.4	24.4	9.5	1.7	1.0	17.0	9.8	10.1	-14.7		
Educational services	13.1	-33.4	16.7	0.6	-6.5	8.8	10.9	35.0	-3.2	8.1	13.1	(D)	(D)	1.1	4.0	-0.3	-4.4	14.1	-14.8	3.3	9.0	12.7	17.0		
Health care and social assistance	7.4	9.3	11.6	2.6	5.3	0.3	-0.4	1.7	20.7	1.2	-0.4	31.7	7.9	-1.6	-9.5	27.0	10.7	0.8	2.3	18.0	9.8	9.9	-16.6		
Arts, entertainment, recreation, accommodation, and food services	7.3	37.7	-2.5	14.7	-4.7	15.5	-20.4	-7.3	-0.9	7.8	5.6	0.6	-2.4	17.1	-3.8	9.1	6.1	17.3	-22.1	97.9	-12.2	-2.9	5.1		
Arts, entertainment, and recreation	13.5	60.2	3.9	12.7	-45.5	22.9	-52.8	-43.6	13.7	251.0	-11.3	-10.9	-18.4	-5.2	1.1	11.7	-8.4	25.8	-81.6	75.7	-2.8	117.4	8.8		
Accommodation and food services	6.3	34.1	-3.8	15.1	3.7	14.7	-16.6	-4.9	-1.5	-3.1	8.3	2.1	-0.5	19.2	-4.2	8.9	7.3	16.7	-17.6	98.3	-12.4	-4.9	5.0		
Other services (except government and government enterprises)	13.0	-6.3	1.5	4.6	8.7	-2.6	-2.0	6.1	12.5	5.3	10.4	1.6	3.5	1.3	0.9	-2.6	8.3	1.3	-5.5	6.2	14.3	15.0	1.0		
Government and government enterprises	3.0	8.6	8.5	8.3	10.0	7.3	9.2	2.6	4.9	7.9	4.2	-1.3	2.1	1.7	1.0	2.0	5.1	3.9	6.2	5.3	2.4	2.0	4.7		
Addenda:																									
Natural resources and mining	12.8	20.3	-15.7	0.8	12.4	-56.8	41.3	-19.1	-0.9	(D)	(D)	-11.3	8.4	164.9	40.0	21.3	209.2	-44.4	-39.6	(D)	(D)	(D)	(D)		
Trade	2.0	32.6	-18.9	7.2	0.5	11.9	1.9	-0.9	10.6	-4.9	2.9	-0.6	-0.7	4.0	9.4	16.6	5.8	6.4	5.6	-2.2	10.6	11.3	6.5		
Transportation and utilities	-8.9	21.7	5.5	1.2	10.4	-4.8	10.9	-4.8	(D)	(D)	(D)	(D)	(D)	2.8	3.6	9.6	5.8	-12.7	0.8	(D)	(D)	(D)	(D)		
Manufacturing and information	-23.1	2.5	-10.5	3.1	13.3	1.0	-0.7	-1.9	3.8	0.7	27.7	-4.2	1.1	10.8	15.9	29.8	21.3	10.4	9.0	13.7	9.5	2.8	3.0		
Private goods-producing industries 2/	-11.3	16.6	-14.4	4.0	26.6	-14.5	20.6	6.5	-11.8	(D)	(D)	-11.6	7.8	20.2	14.4	25.3	54.5	-8.3	-3.2	(D)	(D)	(D)	(D)		
Private services-providing industries 3/	3.2	17.9	-7.7	8.3	0.8	6.8	0.7	-3.4	8.5	(D)	(D)	2.3	-0.3	4.6	4.0	11.3	4.9	1.1	4.1	(D)	(D)	(D)	(D)		

1/ Gross Domestic Product (GDP) is in thousands of current dollars (not adjusted for inflation). Industry detail is based on the 2017 North American Industry Classification System (NAICS).

2/ The private goods-producing industries consist of agriculture, forestry, fishing, and hunting; mining, quarrying, and oil and gas extraction; construction; and manufacturing.

3/ The private services-producing industries consist of utilities; wholesale trade; retail trade; transportation and warehousing, excluding Postal Service; information; finance and insurance; real estate, rental, and leasing; professional, scientific, and technical services; management of companies; administrative and support and waste management and remediation services; educational services; health care and social assistance; arts, entertainment, and recreation; accommodation and food services; and other services (except government and government enterprises).

(D) Not shown to avoid disclosure of confidential information; estimates are included in higher-level totals. (NM) Not meaningful.

SANTA CRUZ COUNTY REAL GROSS DOMESTIC PRODUCT (GDP)

	2001	2002	2003	2004	2005	2006	2007	2008	2009	2010	2011	2012	2013	2014	2015	2016	2017	2018	2019	2020	2021	2022	2023	2024	
All industry total	1,356,565	1,360,954	1,548,611	1,431,116	1,500,219	1,513,746	1,545,448	1,572,319	1,513,011	1,589,957	1,657,916	1,682,386	1,659,224	1,638,024	1,673,910	1,711,335	1,846,358	1,958,916	1,915,298	1,952,446	2,047,296	2,033,172	2,098,884	2,130,410	
Private industries	1,031,706	1,039,740	1,212,258	1,082,423	1,136,856	1,130,684	1,150,504	1,152,688	1,094,066	1,161,505	1,203,933	1,215,657	1,207,656	1,189,185	1,228,235	1,265,789	1,401,461	1,503,332	1,451,238	1,473,701	1,559,170	1,558,684	1,631,181	1,680,140	
Agriculture, forestry, fishing and hunting	15,733	19,155	20,881	15,204	17,668	20,426	7,365	10,477	9,956	8,715	(D)	5,486	3,272	3,574	13,700	18,357	17,660	18,476	23,528	24,213	19,538	21,021	22,828	19,993	
Mining, quarrying, and oil and gas extraction	126	0	0	0	0	56	122	162	190	174	413	738	1,915	1,940	1,306	3,159	7,737	64,201	20,488	2,140	(D)	(D)	(D)	3,350	
Utilities	4,523	5,040	3,932	4,477	1,608	1,173	970	1,576	1,155	1,178	1,113	1,067	1,460	4,911	4,910	5,514	7,127	9,620	12,197	15,323	(D)	(D)	(D)	9,316	
Construction	40,904	44,066	55,571	46,287	46,866	59,667	49,152	69,956	80,376	64,297	77,347	41,093	32,819	37,780	38,149	32,279	29,837	34,267	34,096	34,200	41,925	40,880	45,869	49,955	
Manufacturing	45,024	33,368	37,362	32,537	32,490	38,908	40,529	38,068	34,177	38,033	39,901	51,184	46,876	45,767	49,547	61,555	88,257	108,399	122,406	130,514	155,984	163,847	157,687	157,349	
Durable goods manufacturing	36,253	24,833	29,375	24,403	23,541	27,111	32,059	25,213	21,226	21,548	23,188	34,220	29,491	29,750	25,782	35,700	66,584	82,486	94,382	116,613	134,894	141,051	135,091	134,378	
Nondurable goods manufacturing	6,902	7,855	6,764	7,362	8,413	11,374	7,398	12,552	12,783	16,373	16,595	16,940	17,313	19,905	23,628	25,674	21,673	25,915	28,049	14,350	21,427	23,085	22,775	23,082	
Wholesale trade	270,460	273,867	300,533	259,402	271,773	248,948	289,051	290,594	287,593	314,305	294,904	300,664	301,538	298,759	319,301	358,769	408,060	421,366	436,354	454,807	405,727	401,240	421,414	432,562	
Retail trade	128,079	137,185	237,243	167,474	172,653	180,126	180,815	177,292	153,126	172,520	156,558	149,340	138,664	134,877	129,117	132,508	156,223	162,889	160,777	165,720	141,129	132,697	154,318	173,195	
Transportation and warehousing	137,379	121,358	148,369	155,150	149,799	157,912	146,672	152,717	143,698	(D)	(D)	(D)	(D)	(D)	222,086	219,213	225,321	242,241	244,192	200,450	197,688	280,028	288,157	315,916	308,654
Information	6,159	6,521	6,155	7,506	9,513	9,693	9,637	11,921	12,249	12,079	11,636	13,126	13,969	15,217	16,356	14,570	12,425	14,450	12,310	14,847	12,087	11,828	11,306	11,155	
Finance, insurance, real estate, rental, and leasing	240,218	252,923	229,684	223,765	243,907	214,137	224,492	227,382	211,119	198,998	232,425	279,175	271,564	245,809	254,625	239,758	244,954	235,189	229,994	252,939	248,212	259,353	255,199	273,056	
Finance and insurance	80,745	101,792	90,616	85,797	101,672	52,523	48,424	39,444	47,612	34,255	60,112	68,986	64,159	61,104	59,135	55,504	59,720	58,479	50,593	53,907	50,092	65,920	55,339	67,347	
Real estate and rental and leasing	158,995	153,061	140,590	139,199	144,418	160,218	173,883	184,450	162,849	161,234	173,352	210,630	207,161	185,116	195,123	184,193	185,234	176,674	179,791	199,533	198,678	193,096	200,625	205,488	
Professional and business services	39,383	41,064	46,230	53,056	62,167	72,347	72,625	60,880	55,340	(D)	55,662	(D)	49,491	48,838	48,563	48,829	47,876	49,095	47,480	46,318	55,504	56,637	62,902	64,381	
Professional, scientific, and technical services	28,923	31,294	(D)	(D)	(D)	(D)	(D)	(D)	(D)	(D)	(D)	22,352	(D)	(D)	24,473	(D)	28,072	25,533	29,290	24,424	(D)	26,091	28,102	30,122	31,294
Management of companies and enterprises	(D)	(D)	(D)	(D)	(D)	(D)	(D)	(D)	(D)	(D)	(D)	(D)	(D)	(D)	(D)	(D)	(D)	(D)	(D)	(D)	(D)	(D)	(D)	(D)	(D)
Administrative and support and waste management and remediation services	(D)	(D)	(D)	14,147	(D)	27,169	27,930	29,176	31,573	37,373	37,373	32,865	29,211	26,500	(D)	24,027	20,761	(D)	(D)	(D)	23,429	28,642	26,932	29,570	29,625
Educational services, health care, and social assistance	26,557	27,986	28,635	31,452	31,510	32,378	31,273	30,860	31,186	36,062	36,249	35,946	(D)	49,355	48,339	43,585	53,635	58,271	58,558	57,905	66,010	71,687	76,958	63,945	
Educational services	3,774	4,095	2,610	2,924	2,803	2,505	2,793	3,632	3,436	3,612	3,951	(D)	4,322	4,251	4,302	4,177	3,896	4,332	3,586	3,600	3,853	4,166	4,736		
Health care and social assistance	23,078	24,230	26,019	28,532	28,688	29,795	28,610	28,049	27,638	32,630	32,659	32,063	42,003	45,029	44,085	39,291	49,458	54,381	54,221	54,340	62,455	67,885	72,846	59,161	
Arts, entertainment, recreation, accommodation, and food services	45,480	47,244	64,233	61,324	67,356	62,010	68,371	52,368	46,598	46,270	49,454	50,120	49,268	47,008	52,548	48,642	51,805	53,037	60,160	46,000	85,589	68,677	60,375	60,487	
Arts, entertainment, and recreation	5,627	6,205	9,652	9,726	10,515	5,529	6,539	2,995	1,647	1,880	6,522	5,631	4,949	3,973	3,629	3,565	3,941	3,532	4,339	766	1,325	1,228	2,432	2,504	
Accommodation and food services	39,626	40,776	54,125	51,112	56,325	56,448	61,751	49,495	45,139	44,561	42,796	44,410	44,270	43,018	48,925	45,077	47,863	49,501	55,824	45,195	84,190	67,401	58,015	58,061	
Other services (except government and government enterprises)	31,083	33,602	30,741	30,176	30,375	31,705	29,706	28,081	28,385	31,264	32,116	34,460	34,191	34,688	34,110	33,425	31,924	33,784	32,914	29,739	30,302	31,943	32,506	30,463	
Government and government enterprises	324,654	320,450	333,116	347,787	362,320	382,562	394,525	419,463	418,985	428,468	453,926	466,650	451,467	448,731	445,661	445,553	446,897	455,614	464,108	478,794	488,062	480,124	465,147	467,375	
Addenda:																									
Natural resources and mining	15,338	18,524	20,194	14,791	17,086	19,815	7,254	10,307	9,835	8,618	(D)	6,084	5,217	5,540	14,996	21,510	25,397	81,455	44,189	27,262	(D)	(D)	(D)	23,931	
Trade	396,505	409,829	546,221	430,117	447,544	433,908	473,000	470,658	442,091	488,536	452,888	451,141	440,992	434,342	448,683	491,212	564,983	584,247	597,369	620,813	546,989	533,933	575,402	604,193	
Transportation and utilities	142,314	126,914	152,647	156,612	151,417	159,019	147,563	154,262	144,785	(D)	(D)	(D)	227,004	224,133	230,847	250,368	252,799	212,559	212,785	(D)	(D)	(D)	(D)	317,755	
Manufacturing and information	40,349	38,908	42,150	39,658	41,990	48,148	49,583	50,129	46,872	50,326	51,559	64,014	60,868	61,213	66,139	76,202	100,682	122,853	134,788	145,384	168,338	176,016	169,331	168,863	
Private goods-producing industries 2/	105,497	94,736	110,137	91,234	94,134	115,238	94,538	114,533	119,727	107,801	(D)	97,082	84,079	87,966	102,043	115,138	143,492	223,659	201,060	193,035	(D)	(D)	(D)	235,092	
Private services-providing industries 3/	925,833	945,639	1,102,884	992,372	1,044,071	1,015,744	1,057,782	1,038,984	974,776	1,054,421	(D)	1,119,054	1,123,929	1,101,580	1,126,421	1,150,748	1,257,969	1,280,660	1,250,476	1,280,320	(D)	(D)	(D)	1,426,230	

1/ Real GDP is in thousands of chained 2017 dollars. Industry detail is based on the 2017 North American Industry Classification System (NAICS).

2/ The private goods-producing industries consist of agriculture, forestry, fishing, and hunting; mining, quarrying, and oil and gas extraction; construction; and manufacturing.

3/ The private services-providing industries consist of utilities; wholesale trade; retail trade; transportation and warehousing, including Postal Service; information; finance and insurance; real estate, rental, and leasing; professional, scientific, and technical services; management of companies; administrative and support and waste management and remediation services; educational services; health care and social assistance; arts, entertainment, and recreation; accommodation and food services; and other services (except government and government enterprises).

(D) Not shown to avoid disclosure of confidential information; estimates are included in higher-level totals.

Source: U.S. Bureau of Economic Analysis

SANTA CRUZ COUNTY REAL GROSS DOMESTIC PRODUCT (GDP) ANNUAL GROWTH (%)

	2002	2003	2004	2005	2006	2007	2008	2009	2010	2011	2012	2013	2014	2015	2016	2017	2018	2019	2020	2021	2022	2023	2024		
All industry total	0.3	13.8	-7.6	4.8	0.9	2.1	1.7	-3.8	5.1	4.3	1.5	-1.4	-1.3	2.2	2.2	8.0	6.0	-2.2	1.9	4.9	-0.4	2.9	1.5		
Private industries	0.8	16.6	-10.7	5.0	-0.5	1.8	0.2	-5.1	6.2	3.7	1.0	-0.7	-1.5	3.3	3.1	10.7	7.3	-3.5	1.5	5.8	0.0	4.7	1.8		
Agriculture, forestry, fishing and hunting	21.7	9.0	-26.8	15.5	15.6	-63.9	42.3	-5.0	-12.5	(D)	(D)	-40.4	9.2	283.3	34.0	-3.8	4.6	27.3	2.9	-19.3	7.6	8.6	-12.4		
Mining, quarrying, and oil and gas extraction	0.0	(NM)	(NM)	(NM)	(NM)	117.8	32.6	17.2	-8.3	137.4	78.8	159.5	1.3	-32.7	141.8	145.0	729.8	-68.1	-89.6	(D)	(D)	(D)	(D)		
Utilities	11.4	-22.0	-62.4	8.9	-27.0	-17.3	62.5	-26.7	2.0	-5.5	-4.1	36.7	236.5	0.0	12.3	29.3	35.0	26.8	25.6	(D)	(D)	(D)	(D)		
Construction	7.7	26.1	-16.7	1.3	27.3	-17.6	42.3	14.9	-20.0	20.3	-46.9	-20.1	15.1	1.0	-15.4	-7.6	14.8	-0.5	0.3	22.6	-2.5	12.2	8.9		
Manufacturing	-25.9	12.0	-12.9	-0.1	19.8	4.2	-6.1	-10.2	11.3	4.9	28.3	-8.4	-2.4	8.3	24.2	43.4	22.8	12.9	6.6	19.5	5.0	-3.8	-0.2		
Durable goods manufacturing	-31.5	18.3	-16.9	-3.6	15.2	18.3	-21.4	-15.8	1.5	7.6	47.6	-13.8	-12.7	0.1	38.7	86.1	23.9	14.4	23.6	15.7	4.6	-4.2	-0.5		
Nondurable goods manufacturing	13.8	-13.9	8.8	14.3	35.2	-35.0	69.7	1.8	28.1	1.4	2.1	2.2	15.0	18.7	8.7	-15.6	19.6	8.2	-48.8	49.3	7.7	-1.3	1.3		
Wholesale trade	1.3	9.7	-13.7	4.8	-8.4	16.1	0.5	-1.0	9.3	-6.2	2.0	0.3	-0.9	6.9	12.4	13.7	3.3	3.6	4.2	-10.8	-1.1	5.0	2.6		
Retail trade	7.1	72.9	-29.4	3.1	4.3	0.4	-1.9	-13.6	12.7	-9.3	-4.6	-7.1	-2.7	-4.3	2.6	18.4	3.8	-1.3	3.1	-14.8	-6.0	16.3	12.2		
Transportation and warehousing	-11.7	22.3	4.6	-3.4	5.4	-7.1	4.1	-5.9	(D)	(D)	(D)	(D)	(D)	(D)	-1.3	2.8	8.0	0.0	-17.6	-1.4	41.7	2.9	9.6	-2.3	
Information	5.9	-5.6	22.0	26.7	1.9	-0.6	23.7	2.8	-1.4	-3.7	12.8	6.4	8.9	7.5	-10.9	-14.7	16.3	-14.8	20.6	-18.6	-2.1	-4.4	-1.3		
Finance, insurance, real estate, rental, and leasing	5.3	-9.2	-2.6	9.0	-12.2	4.8	1.3	-7.2	-5.7	16.8	20.1	-2.7	-9.5	3.6	-5.8	2.2	-4.0	-2.2	10.0	-1.9	4.5	-1.6	7.0		
Finance and insurance	26.1	-11.0	-5.3	18.5	-48.3	-7.8	-18.5	20.7	-28.1	75.5	14.8	-7.0	-4.8	-3.2	-6.1	7.6	-2.1	-13.5	6.5	-7.1	31.6	-16.1	21.7		
Real estate and rental and leasing	-3.7	-8.1	-1.0	3.7	10.9	8.5	6.1	-11.7	-1.0	7.5	21.5	-1.6	-10.6	5.4	-5.6	0.6	-4.6	1.8	11.0	-0.4	-2.8	3.9	2.4		
Professional and business services	4.3	12.6	14.8	17.2	16.4	0.4	-16.2	-9.1	(D)	(D)	(D)	(D)	(D)	-1.3	-0.6	0.5	-2.0	2.5	-3.3	-2.4	19.8	2.0	11.1	2.4	
Professional, scientific, and technical services	8.2	(D)	(D)	(D)	(D)	(D)	(D)	(D)	(D)	(D)	(D)	(D)	(D)	(D)	(D)	(D)	(D)	(D)	(D)	(D)	(D)	7.7	7.2	3.9	
Management of companies and enterprises	(D)	(D)	(D)	(D)	(D)	(D)	(D)	(D)	(D)	(D)	(D)	(D)	(D)	(D)	(D)	(D)	(D)	(D)	(D)	(D)	(D)	135.6	103.1	9.7	
Administrative and support and waste management and remediation services	(D)	(D)	(D)	(D)	(D)	(D)	2.8	4.5	8.2	18.4	-12.1	-11.1	-9.3	(D)	(D)	-13.6	(D)	(D)	(D)	(D)	(D)	22.3	-6.0	9.8	0.2
Educational services, health care, and social assistance	5.4	2.3	9.8	0.2	2.8	-3.4	-1.3	1.1	15.6	0.5	-0.8	(D)	(D)	-2.1	-9.8	23.1	8.6	0.5	-1.1	14.0	8.6	7.4	-16.9		
Educational services	8.5	-36.3	12.1	-4.1	-10.7	4.4	6.8	30.0	-5.4	5.1	9.4	(D)	(D)	-1.6	1.2	-2.9	-6.7	11.2	-17.2	0.4	7.0	8.1	13.7		
Health care and social assistance	5.0	7.4	9.7	0.5	3.9	-4.0	-2.0	-1.5	18.1	0.1	-1.9	31.0	7.2	-2.1	-10.9	25.9	10.0	-0.3	0.2	14.9	8.7	7.3	-18.8		
Arts, entertainment, recreation, accommodation, and food services	3.9	36.0	-4.5	9.8	-7.9	10.3	-23.4	-11.0	-0.7	6.9	1.3	-1.7	-4.6	11.8	-7.4	6.5	2.4	13.4	-23.5	86.1	-19.8	-12.1	0.2		
Arts, entertainment, and recreation	10.3	55.5	0.8	8.1	-47.4	18.3	-54.2	-45.0	14.1	246.9	-13.7	-12.1	-19.7	-8.7	-1.7	10.5	-10.4	22.8	-82.3	72.9	-7.3	98.0	3.0		
Accommodation and food services	2.9	32.7	-5.6	10.2	0.2	9.4	-19.8	-8.8	-1.3	-4.0	3.8	-0.3	-2.8	13.7	-7.9	6.2	3.4	12.8	-19.0	86.3	-19.9	-13.9	0.1		
Other services (except government and government enterprises)	8.1	-8.5	-1.8	0.7	4.4	-6.3	-5.5	1.1	10.1	2.7	7.3	-0.8	1.5	-1.7	-2.0	-4.5	5.8	-2.6	-9.6	1.9	5.4	1.8	-6.3		
Government and government enterprises	-1.3	4.0	4.4	4.2	5.6	3.1	6.3	-0.1	2.3	5.9	2.8	-3.3	-0.6	-0.7	0.0	0.3	2.0	1.9	3.2	1.9	-1.6	-3.1	0.5		
Addenda:																									
Natural resources and mining	20.8	9.0	-26.8	15.5	16.0	-63.4	42.1	-4.6	-12.4	(D)	(D)	-14.3	6.2	170.7	43.4	18.1	220.7	-45.8	-38.3	(D)	(D)	(D)	(D)		
Trade	3.4	33.3	-21.3	4.1	-3.0	9.0	-0.5	-6.1	10.5	-7.3	-0.4	-2.2	-1.5	3.3	9.5	15.0	3.4	2.2	3.9	-11.9	-2.4	7.8	5.0		
Transportation and utilities	-10.8	20.3	2.6	-3.3	5.0	-7.2	4.5	-6.1	(D)	(D)	(D)	(D)	(D)	-1.3	3.0	8.5	1.0	-15.9	0.1	(D)	(D)	(D)	(D)		
Manufacturing and information	-21.2	8.3	-6.4	6.4	14.7	3.0	1.1	-6.5	7.4	2.5	24.2	-4.9	0.6	8.0	15.2	32.1	22.0	9.7	7.9	15.8	4.6	-3.8	-0.3		
Private goods-producing industries 2/	-10.2	16.3	-17.2	3.2	22.4	-18.0	21.2	4.5	-10.0	(D)	(D)	-13.4	4.6	16.0	12.8	24.6	55.9	-10.1	-4.0	(D)	(D)	(D)	(D)		
Private services-providing industries 3/	2.1	16.6	-10.0	5.2	-2.7	4.1	-1.8	-6.2	8.2	(D)	(D)	0.4	-2.0	2.3	2.2	9.3	1.8	-2.4	2.4	(D)	(D)	(D)	(D)		

1/ Real GDP is in thousands of chained 2017 dollars. Industry detail is based on the 2017 North American Industry Classification System (NAICS).

2/ The private goods-producing industries consist of agriculture, forestry, fishing, and hunting; mining, quarrying, and oil and gas extraction; construction; and manufacturing.

3/ The private services-producing industries consist of utilities; wholesale trade; retail trade; transportation and warehousing, excluding Postal Service; information; finance and insurance; real estate, rental, and leasing; professional, scientific, and technical services; management of companies; administrative and support and waste management and remediation services; educational services; health care and social assistance; arts, entertainment, and recreation; accommodation and food services; and other services (except government and government enterprises).

(D) Not shown to avoid disclosure of confidential information; estimates are included in higher-level totals. (NM) Not meaningful.