



**FOR LEASE**

**1010 HOFFMAN DRIVE**

**Owatonna, MN**

**FEATURES:**

**4,620 SF +/-  
FLEX  
Retail/ Office  
Space Available**

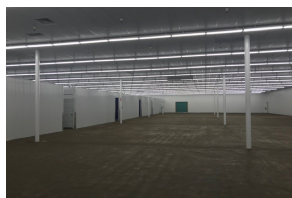
High Traffic Location  
Near I35W

14 Ft Ceiling Height

Shared Access to  
2 Docks Doors

Outdoor Fenced Storage

Ample Parking



**PROPERTY DETAILS:**

Available	4,620 SF +/-
Lease Rate	Market Rate
Land Area	7.32 Acres
Location	Hoffman Drive and State Avenue
Building	69,971 SF Multi Tenant
Year Built	1986
Nearby	Anytime Fitness, Cash Wise, Hardees
Zoning	Commercial B-2
Parcel ID	Steele County 17-343-0101



[www.AriseCommercialMN.com](http://www.AriseCommercialMN.com)

Contact Listing Agent for Details:  
**Christine Rotthoff, CCIM**  
 President/Broker  
 952.210.8812  
[crotthoff@charter.net](mailto:crotthoff@charter.net)

