



FOR LEASE

1010 HOFFMAN DRIVE

Owatonna, MN

FEATURES:

**11,505 SF +/-
FLEX**

**Warehouse/ Retail/ Office
Space Available**

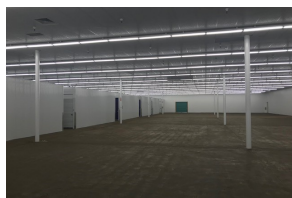
High Traffic Location
Near I35W

18 Ft Ceiling Height

Access to
2 Docks Doors

Outdoor Fenced Storage

Ample Parking



PROPERTY DETAILS:

Available	11,505 SF +/-
Lease Rate	Market Rate
Land Area	7.32 Acres
Location	Hoffman Drive and State Avenue
Building	69,971 SF Multi Tenant
Year Built	1986
Nearby	Anytime Fitness, Cash Wise, Hardees
Zoning	Commercial B-2
Parcel ID	Steele County 17-343-0101



www.AriseCommercialMN.com

Contact Listing Agent for Details:
Christine Rotthoff, CCIM
 President/Broker
 952.210.8812
crotthoff@charter.net

