

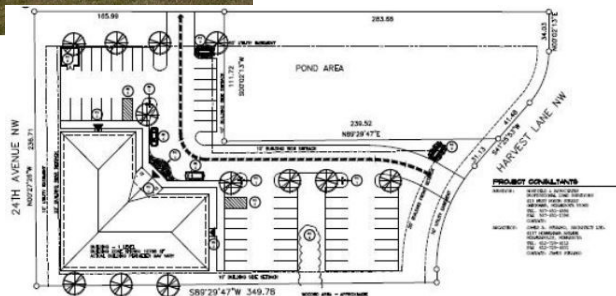


FOR SALE

26th Street NW and 24th Avenue, Owatonna
1.46 Acres



Proposed Building:
10,788 SF
52 Parking Stalls



ASKING PRICE
\$299,000

FEATURES:

- Build to suit options available
- Near Interstate 35W and 26th Street NW Harvest Lane Development
- Perfect for medical user, office or flex space
- Zoned - Commercial B2
- Nearby—Owatonna Hospital & Mayo Clinic, Owatonna Regional Airport and Cabela's
- Excellent Visibility and Sign potential
- Steele County PID: 175920104, 1.46 Acres



Contact Listing Agent for Details:
Christine Rotthoff, CCIM
President/Broker
Mobile/ Text: 952.210.8812
Email: crotthoff@charter.net
www.AriseCommercialMN.com

