



**FOR LEASE**  
**205 24th Avenue SW**  
**Owatonna, MN**

**FEATURES:**

**Manufacturing Warehouse space**

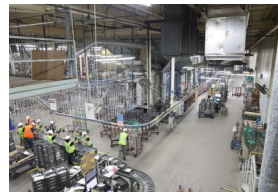
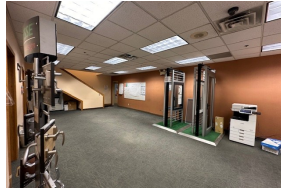
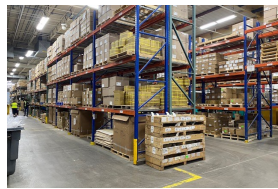
Excellent Location  
 Just off I35W & N of Hwy 14

Ceiling Height 24'

- (8) Docks, 9'6" W x 10'H
- (1) O/H Door 10'W x 10'H
- (1) O/H Door 12'W x 14'H

4,248 SF office space with Conference Room, flex area, lunchroom, employee entrance, multiple bathrooms

Powder coat equipment available/ optional  
 (2) paint lines, (3) paint booths and rack cleaning equipment



**PROPERTY DETAILS:**

Location	Owatonna Industrial Park, near I35W
Land Area	11.24 Acres
Space	75,000 SF (4,248 Office) + Mezz
Year Built	1989
Column Spacing	40' N/S, 30' E/W
Utilities	City Service, 3000 amps, 277/480 3PH
Zoning	IP—Industrial Park District
Parcel ID	Steele County 17-416-0201
Lease Terms	Negotiable



Contact Listing Agent for Details:  
**Christine Rotthoff, CCIM**  
 President/Broker  
 952.210.8812  
 crotthoff@charter.net



www.AriseCommercialMN.com