

**SITE PLAN  
NUMBERED NOTES**

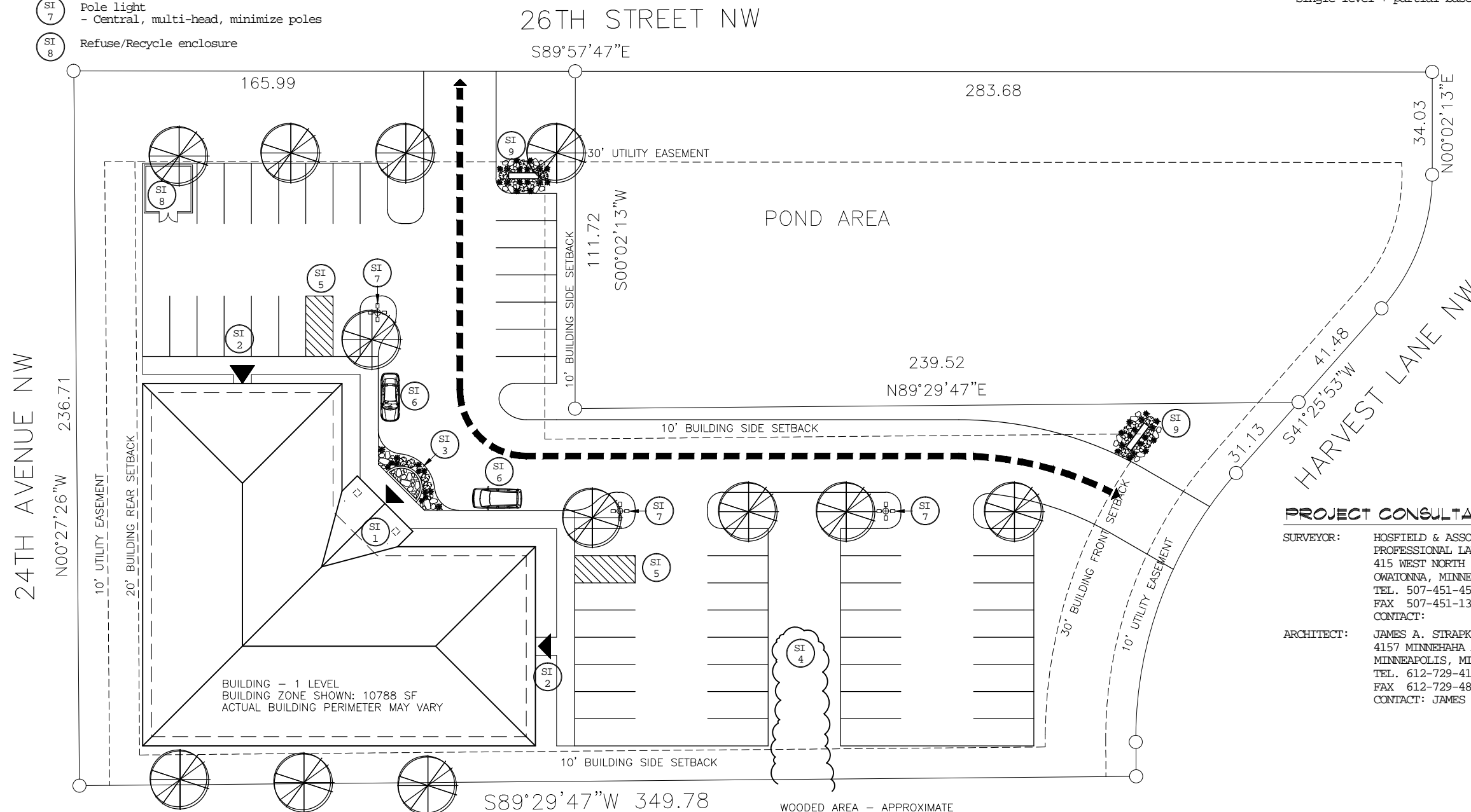
- SI 1 Primary Building Entrance  
- Facing parking  
- East and west exposure  
- Visible from 26th St and Harvest Lane
- SI 2 Secondary Building Entrance/Exit
- SI 3 Fountain  
- Landscape to coordinate with pond
- SI 4 Wooded Area  
- Arborist required to rehab existing trees  
- Clear brush & landscape to coordinate with pond
- SI 5 Accessible Parking  
- Van and standard spaces  
- Access aisle near primary entrance
- SI 6 Delivery/Drop off space  
- Near primary building entrance
- SI 7 Pole light  
- Central, multi-head, minimize poles
- SI 8 Refuse/Recycle enclosure
- SI 9 Monument Sign  
- Adjacent to access drive  
- Visible from 26th St & Harvest Lane  
- Landscape to coordinate with pond

**PROJECT SITE  
DEVELOPMENT SUMMARY**

SITE	63,766 sf	1.46 acres
Maximum Building based on parking	10,889 sf	
1 level	10,788 sf	
<b>PARKING/BUILDING</b>		
- Calculated allowable building area based on parking design (52 spaces - 3) (200/.9) =	10,889 sf allowable	
- Proposed parking	1 van space + 2 car spaces	
Accessible	49 spaces	
Standard	52 spaces	
Total proposed		
<b>PERVIOUS / IMPERVIOUS</b>		
- Area of paving	28,769 sf	45 %
- Area of building	10,788 sf	17 %
- Area of pervious	24,209 sf	38 %

**PROJECT DESCRIPTION**

- PROFESSIONAL OFFICE BUILDING  
- Multi-tenant  
- Single level + partial basement



**PROJECT CONSULTANTS**

**SURVEYOR:** HOSFIELD & ASSOCIATES  
PROFESSIONAL LAND SURVEYORS  
415 WEST NORTH STREET  
OWATONNA, MINNESOTA 55060  
TEL. 507-451-4598  
FAX 507-451-1396  
CONTACT:

**ARCHITECT:** JAMES A. STRAPKO, ARCHITECT LTD.  
4157 MINNEHAHA AVENUE  
MINNEAPOLIS, MINNESOTA  
TEL. 612-729-4112  
FAX 612-729-4831  
CONTACT: JAMES STRAPKO

1  
c10 SITE PLAN - OPTION C issued 09-25-06  
1" = 40'-0"

WOODED AREA - APPROXIMATE  
LOCATION - ADD TO SURVEY



JAMES A. STRAPKO, ARCHITECT, LTD.  
ARCHITECTURE INTERIORS SPACE PLANNING  
4157 Minnehaha Avenue South  
Minneapolis, MN 55406  
(612) 729-4112

PRELIMINARY  
NOT FOR  
CONSTRUCTION

SD ISSUE  
09-25-06

SITE IMPROVEMENTS PLAN

Owner: Steven A. Selchow, DDS, MD  
2130 Cliff Road, Suite 100  
Eagan, MN 55122

PROFESSIONAL OFFICE BUILDING  
24th Ave NW & 26 St NW  
Owatonna, Minnesota

SD  
C10