

The SSLA



LLAMA JOURNAL

The Official Journal of the Southern States Llama Association

April 2020



TABLE OF CONTENTS

SSLA Board Members and Information	3
President's Message	4
SSLA Board of Directors Conference Call, January 28, 2020	5
SSLA Board of Directors Conference Call, February 3, 2020	7
SSLA BOD Call to Vote on Vicki Sundberg's Motion	9
2020 Florida State Fair Photos	10
2020 Hillbilly Show Highlights	12
Fitting the Harness—Training Alternatives	13
2020 SSLA Annual Conference Highlights	17
Calendar of Upcoming Llama Events	20
Advertising Opportunities	21
Obstacle Trailer Advertising Information	22

*Cover: Four Ladies and Me Farm,
East Bend, NC*

Deadline for the next issue is July 15, 2020

Send articles, photos (digital format) to:

Charlene Braun, Online Journal Editor, turtlrun@earthlink.net

SSLA BOARD MEMBERS AND INFORMATION

Board of Directors

Mary Rose Collins, *President*
mrc604@tampabay.rr.com

Andie Frederick, *Vice President*
Davidandie@msn.com

Kathy Devaul, *Treasurer*
Kdevaul@bellsouth.net

Jenessa Moore, *Secretary*
simplicityllamafarm@yahoo.com

Tom Rothering, *Director*
TWRothering@aol.com

Vicki Sundberg, *Director*
homesweeethome_3@yahoo.com

Cathie Kindler, *Director*
llamajudge@gmail.com

Kim Kyst, *Director*
Kim@kyst.org

Committee Chairs & Contacts

(If the committee chair is a board member, that person is also the Board Liaison)

Committees

Annual Meeting Conference—Vicki Sundberg/Tracy Weaver

By-law Amendment—Tom Wilson
Board Liaison: Mary Rose Collins

Carting—Greg Hall
Board Liaison: Vicki Sundberg

Discover Llama—Tom Wilson
Board Liaison: Kim Kyst

Election—To be appointed by President

Fiber—Tracy Weaver
Board Liaison: Vicki Sundberg

Online Journal—Charlene Braun
turtlrn@earthlink.net
Board Liaison: Mary Rose Collins

Library—Lauren Wright
Board Liaison: Andie Frederick

Llama Trekking & Packing—Jenessa Moore

Membership—Lauri Jones
Board Liaison: Andie Frederick

Show—Kathy Devaul
Board Liaison: Cathie Kindler

Website—Vicki Sundberg/Jenessa Moore

Youth & Youth Ambassador Awards—Jackie Ellett
Board Liaison: Kim Kyst

Youth Scholarship—Tom Rothering

Ambassador Awards—Greg Hall

Trekking Awards—Jenessa Moore

Sweepstakes Awards—Vicki Sundberg

Rescue—Deborah Logan
logan99.mail@gmail.com

Sweepstakes Program/Points—Vicki Sundberg

Journal Mission Statement

THE LLAMA JOURNAL, published by the Southern States Llama Association (SSLA) is distributed quarterly to the members of SSLA. The purpose of the Journal is to provide:

- Information and articles of interest
- A forum for members to express their opinions on llamas and related matters
- Board of Directors meeting minutes, Treasurer's report and other information pertinent to the function of SSLA.

Notice: The information contained in this Journal is not intended to be a substitute for qualified professional advice. Our readers are encouraged to consult with their own vets, accountants or attorneys for questions concerning their animals or business operations. SSLA or the editor is not responsible for any losses resulting from a reader's failure to heed this caution. Opinions expressed or implied are hereby the editor's choice and are not the opinions of the SSLA Board of Directors or SSLA as a group.

SSLA Mission Statement

OUR MISSION as members of the Southern States Llama Association is to be a strong organization of llama and alpaca owners who have joined together for the purpose of education, fun, and fellowship while promoting the health and welfare of llamas and the llama industry.

SSLA Online—keep in touch with your llama organization

Website: www.ssla.org

Facebook page: Listed as "SSLA-Southern States Llama Association"

SSLA-Members Yahoo Group: Request membership from ssla-members-owner@yahoogroups.com

Group members can post messages to SSLA-Members@yahoogroups.com

PRESIDENT'S MESSAGE

Hello SSLA Folks,

I would like to start with thanking Kim Kyst for her leadership for the last two years as President and Chairperson of our Annual Meeting and Conference. What a stellar job she has done keeping the organization moving forward and informed! Thanks to Greg Hall, who comes off the Board of Directors, for assisting in so many areas and his constant support of the organization and the Youth. And thanks to Kathy Devaul, who has agreed to stay on as Treasurer in a non-voting position separate from the Board of Directors.

So, it is not an easy time right now. The next folks I want to thank are those who are considered essential at this time of crisis. Those in the medical field, military and law enforcement, we salute you for your hours of dedication. But more so, I want to thank those folks who never thought they would be essential or risking so much to help others. The store and warehouse employees, delivery drivers, truck drivers, take-out and curb-side restaurant folks, and so many others I may forget to mention. A special prayer to the farmers who have been so devastated by this unforeseen event.

As you all know, we have had to cancel or postpone all of our Spring Events. We hope in the Fall we will be able to being back in full swing and try to fit in all the events we missed.

The 2021 Conference Committee is already out of the gate and has started plans by touring a resort in Crystal River, Florida. Save the dates of March 19-21, and if you have any great idea for Speakers or Subject matter, contact Vicki Sundberg or Tracy Weaver.

Stay safe, stay home as much as possible, social distance and wash your hands. We want to see you all soon, when we can raise a glass to being back together as a Community.

Miss you all,

Mary Rose Collins

SSLA BOARD OF DIRECTORS MEETING

CONFERENCE CALL

TUESDAY, JANUARY 28, 2020

Meeting called to order at 7:02 pm.

Attendance:

Kim Kyst
Vicki Sundberg
Greg Hall
Andie Frederick
Kathy Devaul
Lauri Jones
Tom Rothering

Minutes

Previous BOD Meeting Minutes approved prior to this meeting and put in last Llama Journal. Is that correct? **YES**
Annual Membership Meeting Minutes will be carried forward to the Membership Meeting at the 2020 Annual Educational Conference Membership meeting. BOD reviewed and approved and are ready to be presented and voted on by the membership at the conference. **YES, they are ready and approved and copies will be available for the membership at the conference and approval request made at meeting – all directors approve.**

Old Business

Conference:

Friday Night:

Classroom:

5:00 p.m. Board meeting with old and new BOD
5:30 p.m. Pot Luck
7:00 p.m. Georgia Agriculture Commissioner, Mr. Gary Black
8:15 p.m. Annual Membership Meeting

Saturday: 8 a.m. Programs will start
6 p.m. Annual Awards Banquet

Classroom Speakers:

Dr. Lisa Williamson: First Aide
Dr. Brittany Lister-Cria Care
Dr. Cheyenne Dingemans
Dr. Maria Ferrer-Reproductive Emergencies
Dr. Jennifer Good-Holistic care
Dr. Kimberly Parker-Royer and/or Dr. Jennifer Good-Holistic care
Dr. Michael Zager-35 years of camelid health
Network with the veterinarians

Indoor Arena: 8 a.m. Programs will start
6 p.m. Annual Awards Banquet

Indoor arena will be divided into two areas with separate programs during the day.

Fiber area:

Mary Jo Miller—Identifying fleece and judging
Nicole Taylor—Shearing prep, fleece evaluation
grading, skirting for selling raw fiber, determining market value

Training/Shearing:

Ulin and Deb Andrews—Show ready llama (washing and shearing properly)
Cathie Kindler
Mary Rose Collins—The difference between packing at a show and pack trials

Outdoor Arena:

Vicki Sundberg – Ground driving training series continuation

Sunday:

Classroom: Networking

Outdoor Arena stalling area:

Hike departure to Crow's Lake & Ground driving training continuation

1 p.m. Adjourn

New Business

Topic: Membership

Do we print the directory this year? Discussing the pros and cons. If we go digital only it would stay on the member's only side of the website. It would be made available for members to print off the member listing if you wanted. The motion is to print the directory for 2020 and consider not printing for following year – all approved.

Veterinary List: Do we do away with the current list and start over with the veterinary information we gathered last year and this year – motion voted to do away with current list and use latest info approved by all.

Vicki stated that we can put a separate veterinary list on the public side. Kim made a motion to have the veterinarians listed in the directory on the public and secure side – all approved. Kathy has mentioned that we continue to send communications to people that haven't renewed to try and promote events and to encourage membership just don't send them member only information.

continued on next page

SSLA Board of Directors Conference Call
January 28, 2020, continued

Greg Hall had to drop from meeting at 8pm

Topic: Cost of Advertising in Llama Journal

Need to consider costs for advertising whether you are a member or not; this could help offset costs for our webpage. How do you price advertising, by issue or annually? \$50/\$30/\$20/\$10 for members and for non-members \$100/\$60/\$40/\$20. Kim made motion to approve prices for annual advertisements which is 4 issues, seconded by Vicki and all approved.

Topic: Cost of Advertising on Website

Vicki could work on a form for advertising on the website. Once we know if we can do different sizes we can then determine price.

Topic: Youth Scholarship Funds

Moving some money into different account to make extra funds (Tom) – there are too many penalties before it would mature so it is still sitting in the checking accounting; Andie will send us other types of accounts she got from the bank to consider something other than a checking account. We are listed as a not for profit organization, so we have to be careful about changing account types. This has been tabled for now.

Vicki will take on getting our corporation renewed and officers updated on Georgia Secretary of State website hopefully if not will need to keep reaching out to Karen Pihera to get this done.

Any Youth ambassador information should be sent to Jackie Ellett for 2020. Form is on the SSLA website. Then send an email blast once all verified with deadline.

Topic: Show Awards

Show awards for the remainder of 2020 will need to be decided on (Jackie Ellett is providing for the 2021 FL show and Hillbilly 2020). We need to go ahead and put in order for buckle Mellow Yellow since company needs about 90 days. Should we consider trophies or continue with buckles. Vicki made motion to get buckles for Mellow Yellow and Tennessee – Lauri seconded motion, and all others approve.

Topic: Upcoming Election

Ballots out on February 14, 2020 and due back March 3rd – still waiting on a couple of bios and pictures but will have enough candidates per bylaws.

Vicki Sundberg got dropped from the call due to phone trouble at 9:05 pm.

Topic: Bylaw Change

A motion needs to be made to change the Section 5.1 Officers bylaw to remove the requirement for a board member to fill the position of Treasurer. We will work on the wording via email so we can get it voted on and sent to Tom for membership voting 2020. Changing treasurer every 2 years is a huge undertaking and causes problems so this change comes recommended.

Topic: Committee Chairs

Committee Chairs for annual reports for 2020 Membership meeting – confirmed to ensure all covered: Treasurer, Election, By Laws, Library, Show, Website, Fleece, Journal, Youth Scholarship, Membership, Youth

Vicki came back on 9:15 pm.

Topic: Cart Driving Series

Cart Driving Series considering calling them SSLA events: Vicki was getting a quote for insurance in order for us to consider adopting this series. If someone came to a show to do the series and doesn't participate in the show, they are not covered so they must enter the show with at least one llama. For the conference series, they would have to pay the conference fee to be covered. Vicki should ensure that for those folks that show an interest in attending shows that they must enter the show. This is all for insurance coverage except for Ringgold, Vicki's location and another site in NC which the quote will be for so we can consider.

Adjourn – Kathy motioned to adjourn, Vicki seconded and all in agreement to adjourn at 9:37 pm.

SSLA BOARD OF DIRECTORS MEETING

CONFERENCE CALL

MONDAY, FEBRUARY 3, 2020

Meeting called to order at 7:50 pm bt Tom Rothering, VP.

Attendance:

Vicki Sundberg
Lauri Jones
Greg Hall
Andie Frederick
Tom Rothering
Kathy Devaul
Tom Wilson (guest)

Minutes

BOD Meeting Minutes for called Conference Call meeting, January 28, 2020 at 7:00 p.m. Kathy Devaul, Tom Rothering, Greg Hall, Andie Frederick, Vick Sundberg all approve minutes.

Old Business

Kim Kyst joined meeting at 7:59pm

Topic: Proposed Bylaw Changes — - Tom Wilson
(Treasurer position and Membership voting deadline)

Proposed Bylaw Change #1

EXPLANATION

A few years ago, the SSLA Members approved a bylaw increasing the Treasurer's term from a maximum of two (2) years to four (4) years. The reason this was done was multifactorial. The books were in shambles and the SSLA had lost money which later was at least partially repaid. Nonetheless, it took nearly two years to get things back to normal. This was accomplished by the late Hank Balch, the new Treasurer, who got everything running smoothly again. It was not an easy task. That was when the term of the Treasurer was increased as mentioned above. Part of the difficulty is learning the bookkeeping program and dealing with the bank. Things had been running well when unfortunately, Hank passed away. However, Kathy Devaul took over and everything has continued to be organized and stable. The position of Treasurer is not an easy position to fill or to get filled for that matter. When a Treasurer comes to the end of their two terms on the Board and four years as Treasurer, we're back to square one. Another steep learning curve for someone new. Therefore, the Board has proposed making the Treasurer an appointed, non-voting position on the Board which can be renewed

upon authorization by the Board.

THE NEW BYLAWS WOULD READ AS FOLLOWS

(changes are indicated by highlighting)

ARTICLE V: OFFICERS

Section 5.1. Officers.

The Officers of the SSLA shall be President, Vice President, Treasurer (appointed, non-voting member of the Board) and Secretary. All Officers, except the Treasurer, must be members of the elected Board of Directors of the SSLA.

Section 5.7. Term of office.

The term of office shall begin immediately following the conclusion of the Annual SSLA Membership Meeting and shall be for a period of one (1) year. The President, Vice President and Secretary may serve only two (2) consecutive terms. After a hiatus of one (1) year, the person may serve again if elected. In the case that an Officer is filling a vacated position and therefore does not serve a full term in that position, the Officer will still be eligible to serve two (2) consecutive full terms in that position. The position of Treasurer may be held for a four (4) year term in that position. The Treasurer's term may be renewed on a quadrennial basis upon authorization of the voting members of the Board.

Section 6.2. Number, tenure, term.

The Board shall be composed of eight (8) members, including four (4) Officers, one of which is the appointed, non-voting Treasurer and four (4) Directors-at-large. All Directors shall be members of the SSLA in good standing. You must be a current member of the SSLA for one (1) full year and at least eighteen (18) years of age to be eligible to run for the Board. In the election of Directors, the candidate receiving the highest number of ballots cast will be elected to the first position, the next highest to the second and so forth until all available Directors slots have been filled. If a tie occurs between candidates for the last available slot, it will be broken by a vote by telephone or email of the other Directors. The term shall be two (2) years. Directors shall be elected in staggered terms with no fewer than three (3) new members of the board elected each year. A Board member shall serve only two (2) consecutive terms. After a hiatus of one (1) year the person may serve again if elected. In the case a Board member is filling a vacated position, and therefore, does not have a full term on the Board, the Board member shall still be eligible to serve two (2) consecutive full terms in that position. Only one (1) member of a farm or family may

continued on next page

SSLA Board of Directors Conference Call
February 3, 2020, continued

serve on the Board of Directors at any given time. The President from the previous year, unless elected during the current election, shall serve as a non-voting member of the Board.

Tom Rothering made a motion to put this bylaw out to the membership for vote, Vicki seconded the motion, and all other board members approve.

Proposed Bylaw Change #2
EXPLANATION

This amendment is merely for clarification. We had previously used postmarks, however, it was noted that postmarks are sometimes hard to read and are not always present. In fact, the Post Office has started using barcodes which have the date encoded but only they can read them. Therefore, postmarks are not a dependable means to determine the date of mailing by the Membership Chair. As such, the following amendment has been proposed by the Board.

AMENDMENT OF THE BYLAW WOULD READ AS FOLLOWS (Amendments are shown in ***bold italics***)

ARTICLE IV: MEMBERSHIP

Section 4.2. Voting rights.

Each membership shall be entitled to one (1) vote on all matters submitted to a vote of the members. Annual dues must be paid ***and received*** by January 31st in order for a Farm/Family member to be eligible to vote in the general election. Reduced rate Veterinary Gift membership and Youth category shall be non-voting. Honorary members shall have the same voting rights as Farm/Family members and Lifetime members. Although two or more persons may be named on a membership application, only one membership is conveyed under the application and thus only one (1) vote for that “joint” membership would be allowed.

Lauri Jones made a motion to put this bylaw out to the membership for vote, Tom Rothering seconded, and all other board members approve.

Topic: Discover Llamas

Talked about funding to keep this publication going and how do you go to print (online or paper). The last three publications were in 2017, 2009 and 2007. Bring up our membership meeting at conference for further discussion with the members. Kim and Tom Wilson will work on pricing so that membership has an idea of what the cost would be.

Greg Hall had to drop at 8:45pm
 Tom Wilson dropped from call at 8:48pm

Topic: Cart Driving Series (Vicki)

Quote was \$416 or \$520 with terrorist coverage and this would cover 6 people over 3 days per event. There are policy fees also because it has to be written with a different company. At this cost, it may not be feasible, so we just start with the first two at the shows and see how it goes. Vicki will check will facilities to see if they can be added to their insurance at a lower rate.

New Business

Topic: Corporation Registration

Georgia Secretary of State for our corporation registration should wait until after election and then update it before the deadline to avoid a penalty. Making changes costs extra money so doing it after the election is best.

Discussion

Jackie Ellett confirmed to do youth ambassador for this year's conference, but we will need to find someone to handle this for next year.

Adjourn 9:12pm – Vicki Sunderg made motion to adjourn; Tom Rothering seconded motion and all others approved.

SSLA BOARD OF DIRECTORS CALL TO VOTE VIA EMAIL MOTION MADE BY VICKI SUNDBERG ON 2/13/20

I motion the upcoming Llama Driving Five-Session Instruction Seminar be adopted by SSLA and become the SSLA Llama Driving Five-Session Instruction Seminar. This is likely the only year to conduct this seminar.

Background: Initially the thought behind this seminar was to provide “free” training so that more llama owners would be motivated to train their llamas to pull a cart in a safe, step-by-step approach led by several experienced llama cart drivers. The 5 venues were chosen to geographically spread across the Southeastern states to motivate owners to come to the sessions without some always traveling far and others have them all local. Furthermore, if some of the sessions could be done in the same site as another llama event, people’s travel funds could be further eased. And as a symbiotic benefit, perhaps some who want to train their llama to pull a cart, but don’t normally attend the Hillbilly and NE Tennessee Shows, more would sign up to come to the show benefiting SSLA.

Reason: The reason for this request to become an SSLA Event is due to insurance. Planning for the of the Hillbilly and Conference brought to our attention that the SSLA insurance will provide coverage for the SSLA events, but if anyone who isn’t registered for the SSLA event is on site, then the insurance has a problem. So anyone coming to, say, the Hillbilly show for just the carting could cause a problem. If the cart driving becomes part of an SSLA event, there are no extra charges and no question of insurance coverage. Furthermore, for the sessions planned to be at the Mashburn and the Sundberg locations, these two sessions can be covered by the SSLA insurance.

Cost to SSLA: Currently, the SSLA General Liability Policy annually costs \$223.00. That amount consists of coverage for 200 SSLA members and two sites, GA National and Rosen Shingle Creek. The last two are specifically \$25 and \$20 each year. With the expectation of similar costs, and with three sessions already covered under the umbrella of Hillbilly, Conference and NETLS, the additional two locations would incur \$40-50 additional insurance costs. For the Mashburn location Stacy remains the ever generous SSLA member. She does not want any money for the facility use. The only charge she requests is if people camp there, they pay for electricity which for the HODLAS show is \$20. At the Sundberg locations, again no charge for the facility uses and the only estimated reimbursed event cost is \$80 per day to rent a port-a-pot.

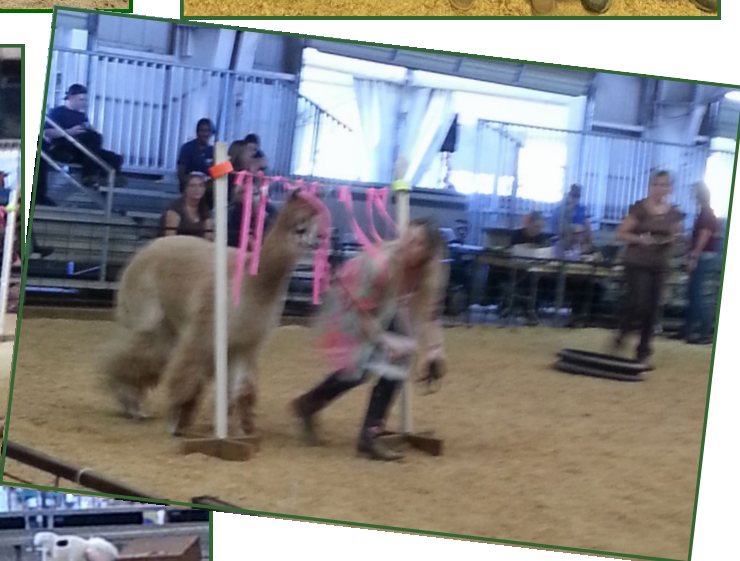
Since this is a progressive series of training, the number of participants is unknown. Establishing this as an SSLA event now will expedite the planning if there are participants. I will cancel events based on interest, protecting SSLA from undue costs.

Respectfully submitted,

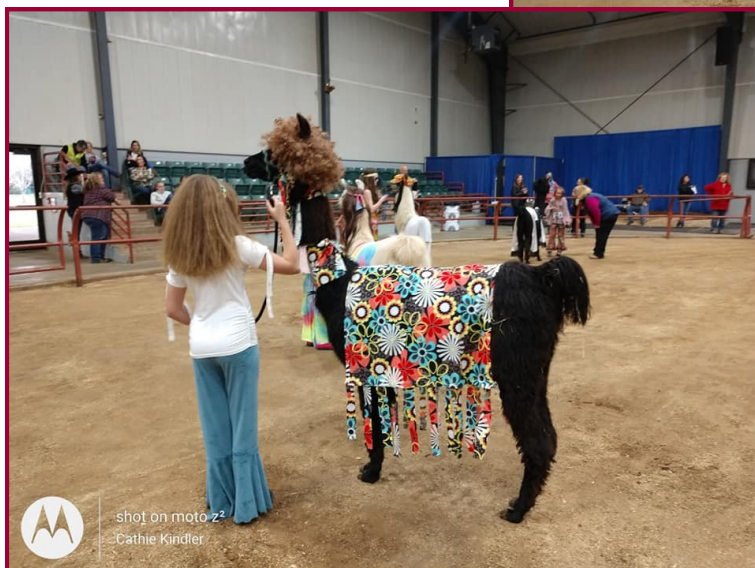
Vicki Sundberg

All BOD approved this motion via email as of 2/13/2020.

2020 Florida State Fair

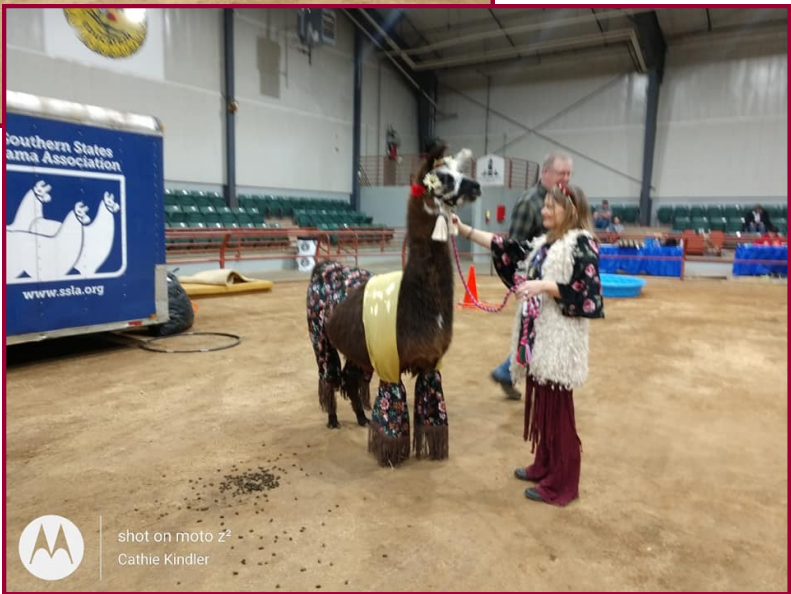


2020 HILLBILLY SHOW



shot on moto-z2
Cathie Kindler

2020 HILLBILLY SHOW



Fitting the Harness – Training Alternatives

By Susan L. Gawarecki, Pathfinder Farm

Halter

The halter is a key aspect of the harness. Perhaps the most popular design is a halter with a well-padded nose band shaped and stiffened by an internal strip of metal. Now known as the Flaming Star Driving Halter, it was designed by Jim & Amy Logan (of Click-and-Reward training fame) and is currently sold by Llama Hardware <https://www.llamahardware.com/driving-gear.html>. This halter can be custom fitted to your llama's face and provides a safe, stable, and comfortable means of control. However, there are other designs on the market that have been successfully used and that are easier to transfer between different llamas if you have several animals that you are working with. Considering that some people may be in the early stages of training and deciding whether they want to continue with driving or cannot yet afford to buy the equipment, a standard halter can be adapted for temporary use. A practice halter for training and ground driving should have:

- Adjustment to allow a snug (not too loose, not too tight) fit – it should not slip under modest pressure nor allow cud chewing
- Side rings on the nose band where the reins to connect

X-style halters are not as stable on the llama's face as one with an adjustable nose band. For an example of a workable temporary driving halter, see Figure 1.



Driving Lines

Reins or *driving lines* may be 10 to 14 feet long. There are several practice alternatives if you do not have access to a set. The lunge lines used for training horses in a round pen make a suitable substitute and are available from most tack and farm stores. These are 20 or more feet long and can be

cut to a more useful length. See Figure 2 for comparison of a driving line with a lunge line.



Another option is to buy enough 5/8-inch rope stock and make your own driving lines with the same hardware used for lead ropes.

Tack-box Items

You will undoubtedly be taking normal halters on and off as you test and adjust your driving halter. In addition, the driving halter should not be left on for extended periods of non-driving because it is too snug to permit cud chewing, plus it is a signal that the llama's attention should focus on driving. A collar with lead rope allows a llama to be tied safely and securely while you are changing or adjusting halters as shown in Figure 3.



Fitting the Harness – Training Alternatives *continued*

A must-have is a pair of driving gloves. Control of your llama on the street, in the ring, or in any public venue is of the utmost importance. Gloves allow you to grip the reins securely without risk of rope burn and to minimize hand fatigue. Bicycling gloves with padded palms and ventilated backs are an excellent choice (Figure 4), although any well-fitting glove is better than none. Gloves should fit you snugly so they cannot slip off under pulling stress.



Practice Substitutes for the Harness

As you proceed with ground driving, it becomes desirable to move from just using a halter and lines to get your llama used to the feel of hardware on their body. In addition, you want to be able to run your driving lines through something resembling *terrets*, which are the rings that attach to a driving saddle and have the purpose of aligning the driving lines along the body of the llama. If you do not yet have a harness, you can still simulate the feel of one for training your llama.

A *surcingle* is a useful option for driving training, as well as other purposes, such as stabilizing costumes and blankets for shows and parades. This is a stand-alone girth strap which typically has attached rings in two or more positions on each side. A pony-sized surcingle will adjust to fit a llama and is available in tack stores. Position it behind the front legs but not far enough forward to interfere with leg movement. It should be snug but does not need to be tight. See Figures 5 and 6.



A note about safety: when you are not actively using the driving lines, they should always be looped together and safely placed where the llama cannot easily step on or get tangled with them. See Figure 6.



Fitting the Harness – Training Alternatives

continued

Another harness substitute that most llama owners have on hand is a pack system. A pack saddle can be adapted to provide a harness-like experience for a beginning driving llama.



Indeed, a pack saddle can replace a harness for pulling a cart in an emergency (see Figure 7).

For training purposes, a pack saddle can provide the feel of a *breast collar*, a *breeching*, and a *backsaddle & belly band* while a llama is being ground driven. See Figures 8 and 9. This is an excellent way to desensitize a llama to these parts of a harness that will be actively in use with a cart. If you pack with your llama, even for short trips with light weight, you should use the pack system's *chest strap* or *breast plate* and *breeching* or *butt strap*. Hilly terrain or stringing llamas will cause these parts of the pack system to activate to keep the saddle in place, which simulates the changing pressures of the breast collar and breeching during driving.

The purpose of these parts of the harness is the key to movement of the cart:

- The breast collar is positioned across the llama's chest and is connected directly to a *singletree* on the cart on each side by a long strap; as a pair these are called *traces*. The llama's forward motion pushes against the breast collar, and this force is used to pull the cart. This part of the harness is separate from the rest of the harness and may only be connected to the backsaddle by a loop over the back of the neck to keep it in the proper position on the llama's chest.
- The breeching is the braking system. When the llama slows, stops, or begins moving downhill, the cart will move forward relative to the llama. The breeching is connected on each side to a loop on the cart's *shafts* by straps called *holdbacks*. As the cart tries to push the shafts past

the llama, the holdbacks pull the breeching against the llama's rump, allowing the llama to press back into the weight of the cart to slow or stop it.

Additionally, terrets can be simulated by either a loop of webbing or carabiner-type clip attached to a pack saddle; see Figures 8, 9, 10, and 11.



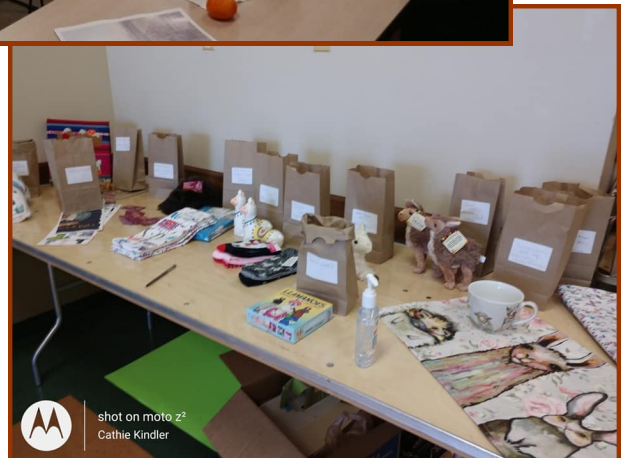
Fitting the Harness – Training Alternatives *continued*

Summary and Advice

Ground driving can advance by imaginative use of alternatives to the driving halter, driving lines, and harness. After your llama begins to understand verbal commands and rein signals, introduce the additional hardware to desensitize it to straps similar to those of the harness. How your animal accepts this step will also be a clue as to how well he is likely to respond to the more complicated stimulation of fitting and wearing a harness.

As you progress, remember to always keep the safety of yourself and your llama at the top of your mind. Each time something new is introduced, ask a helper to hold a lead rope when you first start out until you are sure that the llama has accepted it. Look for tools to help manage the complicated training process. A collar makes changing and adjusting halters secure, while gloves allow you a better grip on the driving lines. You will find other items that you want to add to your driving tack box. Be sure to desensitize your llama to new or potentially threatening situations while on lead only, so that he does not have bad associations with the driving training. For example, work with your llama near moving vehicles in a parking lot or well off of a quiet road, preferably with a second handler, so that when he is finally ready to train on the road in harness passing cars will not frighten him.

2020 SSLA ANNUAL CONFERENCE

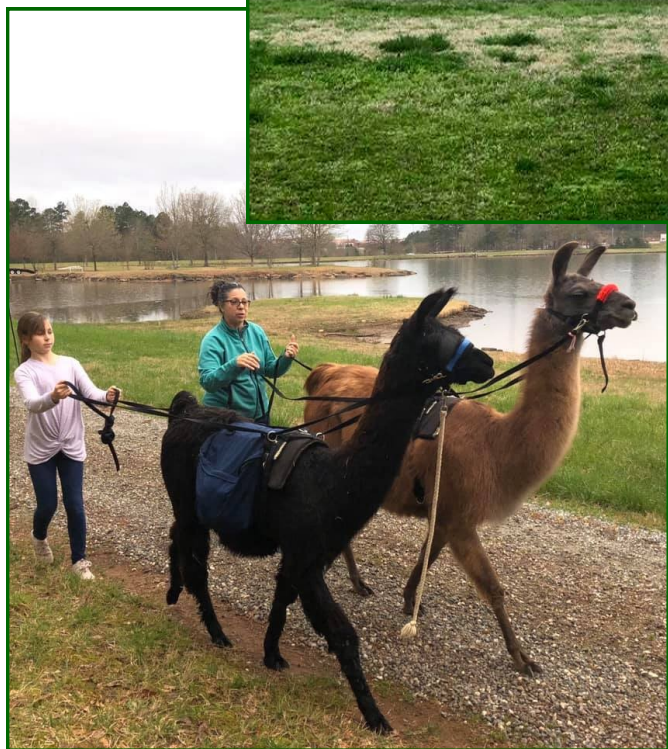
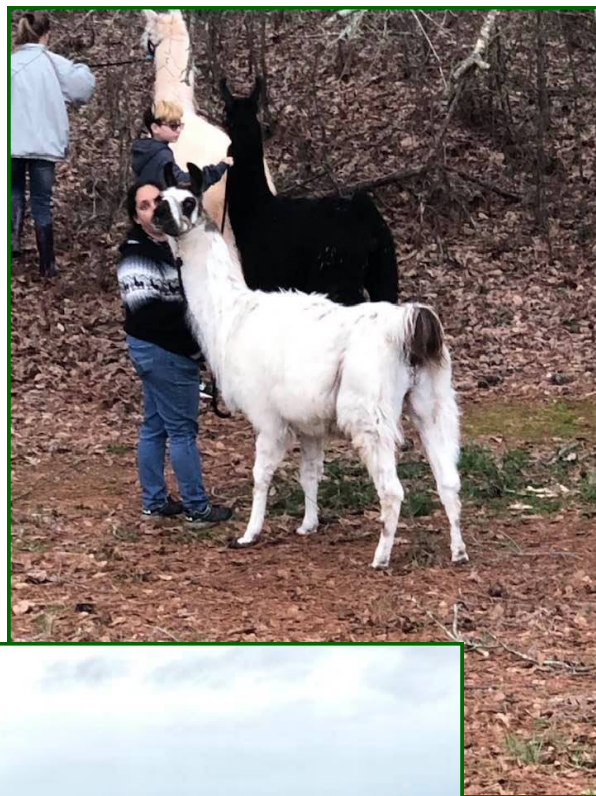
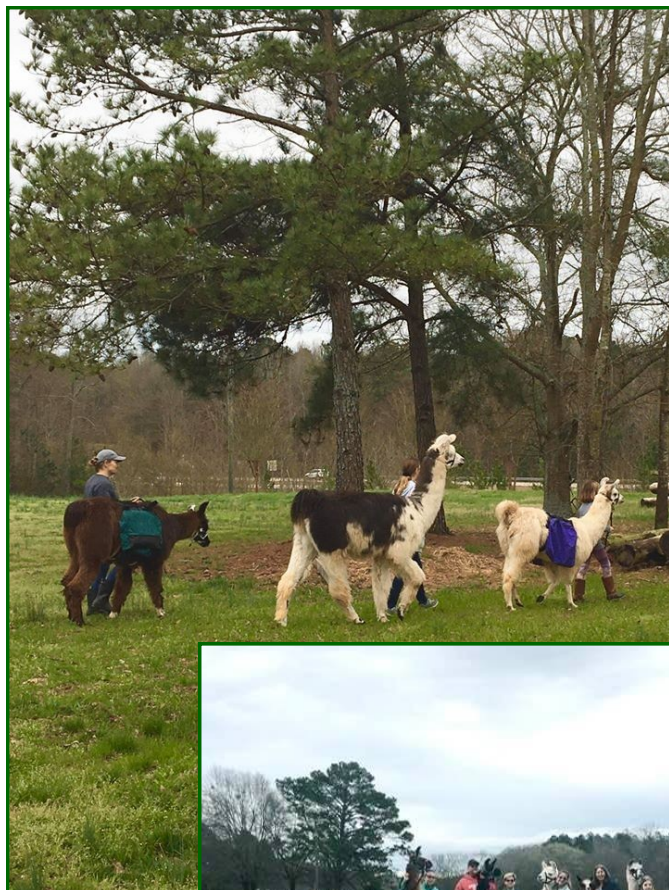


shot on moto z²
Cathie Kindler

2020 SSLA ANNUAL CONFERENCE



2020 SSLA ANNUAL CONFERENCE — CROWS LAKE HIKE



CALENDAR OF UPCOMING LLAMA EVENTS

Date	What	Where	Contact
April 18, 2020 RESCHEDULED to September 12, 2020	Mellow Yellow Llama Show	Dixie Doodle Llama Farm Cumming, GA	Cathie Kindler llamajudge@gmail.com
April 25-26, 2020 CANCELLED	SSLA Spring Pack Trial	DuPont State Forest, NC	Mary Rose Collins mrc604@tampabay.rr.com
May 23-24, 2020 RESCHEDULED Date TBD	NE Tennessee Llama Show	White Pine, TN	Kathy Devaul Kdevaul@bellsouth.net



Southern States Llama Association Advertising Opportunities



Our Llama Journal

Published Quarterly, your support helps SSLA and gets you customers
Contact **Charlene Braun**, Online SSLA Journal Editor at turtlrn@earthlink.net

Our Obstacle Trailer

Our official SSLA Trailer carrying the show obstacles travels all over the highways and byways here in the South
Put your ad on the trailer and get high visibility
Contact **Kathy Devaul** at kdevaul@bellsouth.net

SSLA Discover Llama Magazine

Published for new camelid owner or those interested in owning llamas
Contact **Tom Wilson** at williesspiritfarm@gmail.com

Southern States Llama Association Website

www.ssla.org
Members can advertise their animals, products, and "stuff" here on our web site
Contact **Vicki Sundberg** at homesweethome_3@yahoo.com

Southern States Llama Association Annual Membership Directory

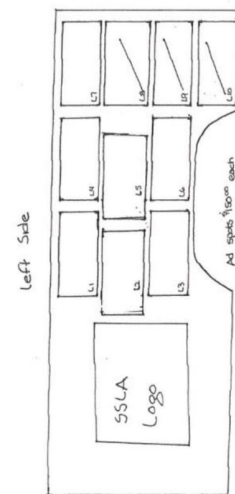
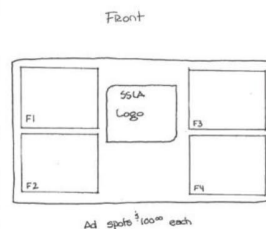
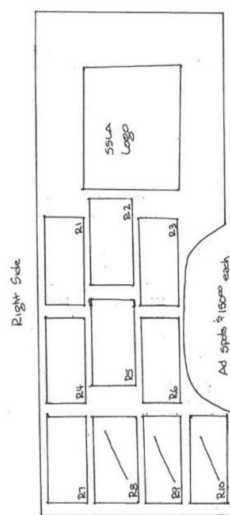
Members have the opportunity to promote farm, services, animals and products with print advertisements
Contact **Lauri Jones** at aurijones55@gmail.com

Southern States Llama Association (SSLA) Obstacle Trailer Advertising



Southern States Llama Association (SSLA)

Obstacle Trailer Advertising Form



SSLA is offering this MOBILE opportunity for visibility within the Southeast Region of the United States. Great limited space available opportunity to hit the roads, show rings, interstate, back roads, mountains and rest areas within the SSLA show area! SSLA is opening up the opportunity for marketing on the obstacle trailer! Limited space available. Artwork assistance available.

The profile photo of the trailer gives you a visual image of the opportunities available. The company that created the wrap artwork for the obstacle trailer is assisting with artwork design and installation. Advertisement is for a full year based on advertising contract. Ads for the side panels for \$150 per space. Ads for the front panel is \$100 per space. Payments must be received prior to space being reserved.

Name: _____

Address: _____

PhoneNumber: _____

Email: _____

Space selection: _____

Please complete this form and return to Kathy Devaul.
Kdevaul@bellsouth.net or mail 217 Donald Road, Leesburg, GA 31763