

# Lighting Instructions for Elston Catalytic Heaters

If the control inside the heater matches Illustration 1, follow the lighting instructions on the top of page 2.



*Illustration 1: Old Style Control*

If the control inside the heater looks similar to Illustration 2, follow the lighting instructions beginning on bottom of page 2.



*Illustration 2: New Style Control*

If you have additional questions or need troubleshooting help, please consult the owners manual on our website at [www.elstonmfg.com](http://www.elstonmfg.com) or call us at 605-336-7716 or 1-800-845-1385.

## Catalytic Heater Lighting Instructions for Old Model of Control (H10-710)

**Read operators manual and all warning labels before operating heater.**

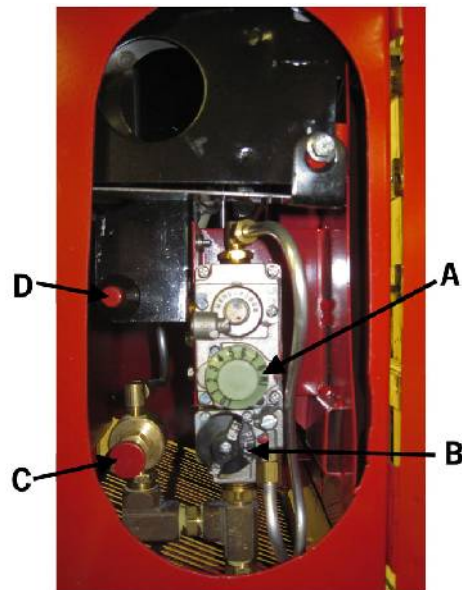
1. Check bottle fittings for tightness and turn valve(s) ON.
2. Turn main control valve to ON.
3. Turn thermostat settings to HIGH.
4. Push and hold small red knob on the brass valve IN and, at the same time, push the red spark igniter button IN. When gas reaches pilot burner, open flame ignition takes place.
5. Continue to hold pilot button down while pilot flame preheats thermocouple (approximately 10 seconds)
6. Push main control button firmly down and RELEASE. Main control is now open and propane is going into catalyst.
7. Continue holding pilot button.
8. When propane reaches pilot flame from the catalyst ignition of gas on the catalyst will take place. This flame preheats the catalyst.
9. When red glow appears behind and around thermocouple, the pilot button can be released. Pilot flame will go out..
10. Red glow will expand until catalyst is energized.
11. Set temperature settings (High 75 – Low 35).
12. Secure heater into the trailer and place vent tube into hole in floor.

---

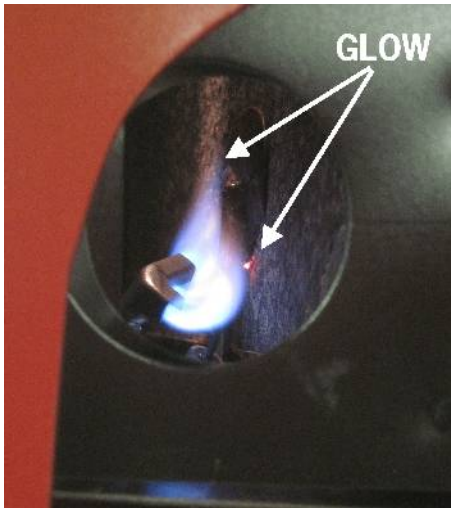
## Extended Instructions for Lighting an Elston Catalytic Heater with New Model of Control

**Please follow these instructions when you have trouble lighting the heater following the directions on the side of the heater. Remember to read the operators manual and all warning labels before operating the heater.**

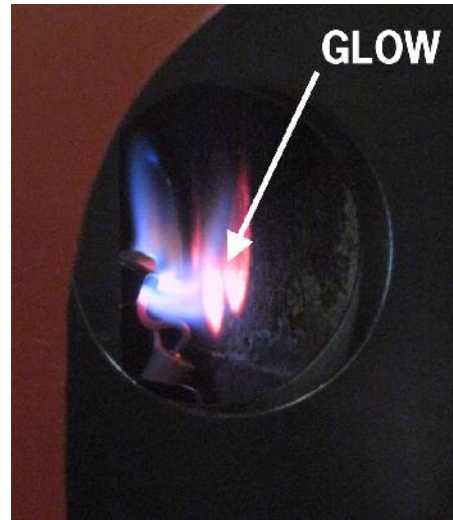
1. If the temperature where you are lighting the heater is above 55F or so, the heater can be difficult to light unless you cool the thermostat probe (we recommend an ice cube) or move the heater to a cooler location.
2. Check fittings on propane bottle(s) for tightness and turn valve(s) ON.
3. Turn thermostat dial to HIGH as shown by label A in Illustration 3.



4. Turn main control dial to PILOT. See B in Illustration 3.
5. Push and hold small red knob (C) on the brass valve in and push the red button (D) on the spark igniter in once per second until the pilot light ignites. If the pilot light does not ignite within 30 seconds, release the red knob on the brass valve to stop the flow of gas and wait a couple of minutes before trying again.
6. After the pilot light has heated the section of the catalytic pad behind it to a strong red color (this takes between ½ and 1 ½ minutes) as shown in Illustration 4 and 5, push and hold the main control dial in. The dial can only be pushed in when it is in the PILOT position. This allows a small amount of gas to flow to the catalytic pad before the thermocouple is fully hot.

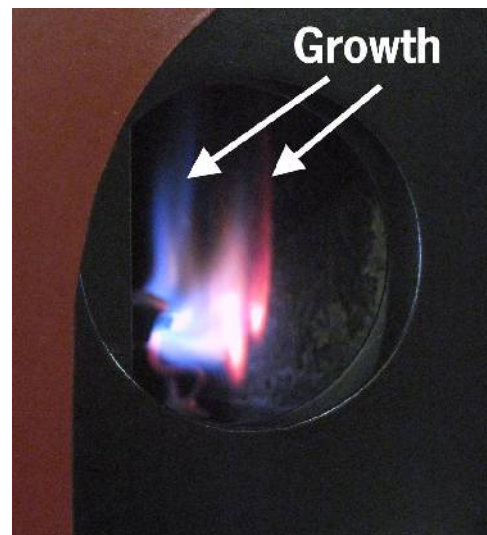


*Illustration 5: Pilot Light Has Warmed Pad – Heater with Hard to See Heated Areas in Bright Light*



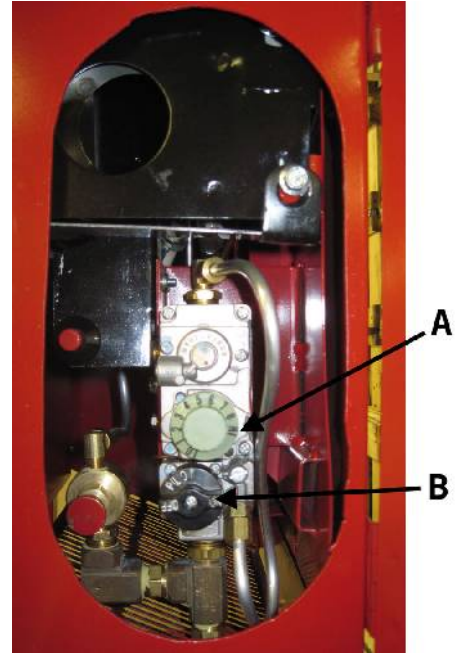
*Illustration 4: Pilot Light Has Warmed Pad – Heater with Easy to See Heated Areas in Dim Light*

7. The propane flowing through the catalytic pad will cause the red area by the pilot light to grow, typically toward the top of the pad as shown in Illustration 6 (compare to Illustration 4). If the red area doesn't grow, the heat from the pilot light did not have enough time to heat up the catalytic pad.
8. After the red area near the pilot light has grown significantly (approximately 30 to 90 seconds), release the main control dial and turn it to the ON position as shown in Illustration 7.

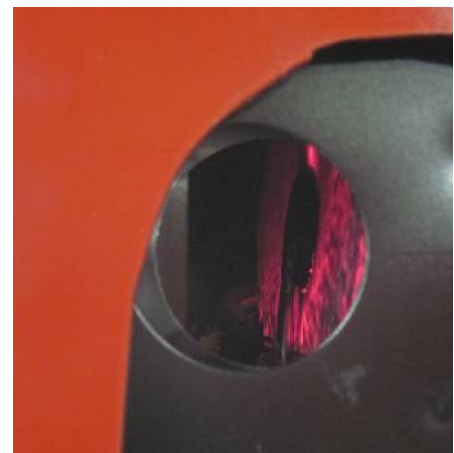


*Illustration 6: Increase in Heated Area from Standby Gas Flow*

9. The propane flowing through the catalytic pad may ignite as it reaches the pilot flame. Waiting for a minute or two at this step (with the pilot light flame still on) is strongly recommended as the pad will warm up much faster but is not necessary.
10. Release the knob on the pilot light valve. The pilot light should go out and the red glow behind and around the thermocouple should remain.
11. Wait 10 to 20 minutes until the red glow expands over most of the pad. Illustration 8 shows a view of the pad at full temperature. Note that the red glow has been enhanced for clarity and is slightly brighter than real life. Some areas will have a brighter red glow and very warm air will be coming out of the top of the heater.
12. Check that no flames are visible on or near the catalytic pad.
13. Set thermostat to desired temperature (High - 85, Low - 45)
14. Secure heater into the trailer and place vent tube into hole in floor.
15. For additional troubleshooting help, call Elston Manufacturing at 605-336-7716 or 1-800-845-1385.



*Illustration 7: Control in ON Position*



*Illustration 8: Pad at Full Temperature*