



 **iBRAIN**  
International Institute for the Brain

*presents*

# The iCAN Do Anything Fashion Show

Thursday, September 8, 2022

Gotham Hall, NYC

Time: 5:30pm - 8:30pm

# Table of Contents

Table of Contents.....	2
Letter to Potential Sponsors.....	3
iBRAIN Overview.....	4
Community Impact.....	5
Invitation/Lock in your Package!.....	6
Venue.....	7
Sponsor and Donor Packages.....	8
Sponsorship Packages.....	9
• Title/Partner Sponsor	
• Platinum Sponsor	
Sponsorship Packages.....	10
• Gold Sponsor	
• Silver Sponsor	
• Bronze Sponsor	
• Single Ticket Sponsor	
Donor Packages.....	11
• Atelier Collaboration Donor	
• Model Collaboration Donor	
Donor Packages.....	12
• Auction Item Donor	
• Gift Bag Item Donor	
• In-kind Donations	
Student Profiles.....	13
Contact Page - Thank You!.....	56

# Dear Potential Sponsors,

We are so excited to invite you to the first International Institute for the Brain (iBRAIN), iCAN Do Anything Fashion Show on Thursday, September 8, 2022, at Gotham Hall in NYC!

iBRAIN, with locations in Manhattan's Upper East Side and Brooklyn, is proud to be an independent, not-for-profit educational organization. Through the efforts of our faculty, staff, parent body, and Board of Directors, we ensure the families, and most importantly, our students with moderate-severe brain injury and brain-based disorders have access to a highly specialized educational opportunity based on their individual needs. This includes a range of multi-disciplinary services including, Physical Therapy, Occupational Therapy, Speech and Language Therapy, Aquatic Therapy, Assistive Technology, Vision, Hearing, Social Work and Nursing Services. Every student also has 1:1 paraprofessional who supports them throughout the school day.

Today we serve students ranging from age 5 through 21 years old, welcoming more students each year as we continue to bring strong and dynamic educational opportunities to children with brain injury and brain-based disorders across the New York City metropolitan region. We strive to not only provide the best learning opportunities and creative outlets for our student population, but to also help them connect with others and lead happy and healthy lives.

We believe in a future that is accessible and inclusive, and the fashion industry is at the forefront of being able to transpire this change. We believe there is no better way to kick start New York Fashion Week than to spotlight the endless possibilities through our very own, vibrant student body.

We invite you to join us in our fight to provide a more accessible and affordable education for students with brain injury and brain-based disorders. On Thursday, September 8th 2022 we are hosting the first iBRAIN fashion show fundraiser. We are requesting your help with sponsorships and donations for the show. Monetary sponsorships and donations such as apparel, accessories and auction items would be greatly appreciated in order to bring this one-of-a-kind event to life. At the same time, we want to give fashion designers and brands the opportunity to collaborate with our students by partnering with each of them to create their dream outfits!

If you would like to collaborate with a student, please browse through our student profiles and pick a student (or two) to partner with! Many of our students love fashion, and they would be delighted to know that talented fashion designers like you would like to work with them and have them as a muse. You can also sponsor a student and promote your brand in a unique way! Help a student by sending them an outfit you've designed with them in mind.

Alternatively, if you prefer just to support the designers involved and sponsor this event, we have many opportunities outlined for you that will highlight your brand and your generous support.

The fashion show will be an exciting event for all! iBRAIN students will walk the runway with their fashion guides, wearing their uniquely designed clothing. The event will also feature a cocktail hour and a silent auction..

Our students would be honored to have you as their sponsor, and it would mean so much if you are able to join us by sharing your creations and support this coming September 8th. Please take some time to browse through our various sponsorship packages and feel free to reach out with any questions or concerns.

Thank you for your consideration!

Sincerely,  
iBRAIN





# iBRAIN Overview

iBRAIN is proud to be an independent, not-for-profit educational organization. Through the efforts of our faculty, staff, parent body, and Board of Directors, we ensure the families, and most importantly, our students with brain injury and brain-based disorders have access to a highly specialized educational opportunity based on the individual needs of each student. Thank you for taking a moment to get to know our community!

## *Mission*

The mission of iBRAIN is to research, develop and implement special education and related services for students with brain injury and brain-based disorders.

## *Family Focused*

Brain injury does not just impact the student but the entire family, and iBrain's programs are designed to support the entire family.

## *Philosophy*

Things work out best for those who make the best out of the way things work out!

# Our Services

Specialized Education  
Aquatic Therapy  
Assistive Technology  
Conductive Education  
Health and Nursing  
Hearing Education  
Occupational Therapy  
Physical Therapy  
Research Department  
Social Work Services  
Speech Language Therapy  
Vision Education  
Music Therapy





# Community Impact

Today we serve students ranging from 5 years old through 21 years old. We are growing, and welcoming more students each year as we continue to bring strong and vibrant educational opportunities to children with brain injury and brain-based disorders across the New York City metropolitan region. Each of our students receive over \$200,000 worth of services per year, and more than 20% of our students come from ESL families. Below are a few other ways iBRAIN continues to make a difference in the TBI community.



## THERAPY

30 minutes per session

60 minutes per session

4 hours per week

15 hours per week

168 hours a year

630 hours a year

## SERVICES

NYC Warehouse Students with TBI

iBRAIN has a goal to get students walking, talking and developing

168 hours/year of OT/PT/Speech

630 hours/year of services

12:1:4 classroom ratio

6:1:6 classroom ratio

Anxious families facing bureaucracy

iBRAIN advocates for students who cannot speak for themselves

Push problems and costs into the future

Students develop self sufficiency, reduced hospitalizations, increased attendance

Lack of intensity achieves little results

Studies have shown that repetition and neuroplasticity of the brains yield immeasurable results

# iCAN Do Anything Fashion Show

September 8, 2022

5:30 pm - 8:30pm

Gotham Hall, New York City

Dress Code: Cocktail Attire

Complete the e-form below and email to:

Lucy Walters at [lucy@lbrainnyc.org](mailto:lucy@lbrainnyc.org)

-OR-

Complete and mail this form along with your  
tax-deductible donation payable to:

iBRAIN

311 East 94th Street,

Manhattan, NY, NY 10128

ATTENTION: 2022 iBRAIN Fashion Show

☐ Title/Partner Sponsor: \$50,000☐ Platinum Sponsor: \$30,000☐ Gold Sponsor: \$20,000☐ Silver Sponsor: \$10,000☐ Bronze Sponsor: \$5,000☐ Single Ticket Sponsor: \$500☐ Atelier Collaboration Donor☐ Model Collaboration Donor☐ Auction Item Donor☐ Gift Bag Item Donor☐ In-Kind Donation

Company\_\_\_\_\_

Contact\_\_\_\_\_

Address\_\_\_\_\_

City\_\_\_\_\_

State Zip Code\_\_\_\_\_

Phone\_\_\_\_\_

Fax\_\_\_\_\_

E-mail\_\_\_\_\_

☐ Please bill me in \_\_\_\_\_  
equal payments (1 to 6)☐ Check enclosed☐ VISA ☐ MASTERCARD☐ AMEX ☐ DISCOVER

Card Number\_\_\_\_\_

Expiration Date\_\_\_\_\_

Signature\_\_\_\_\_

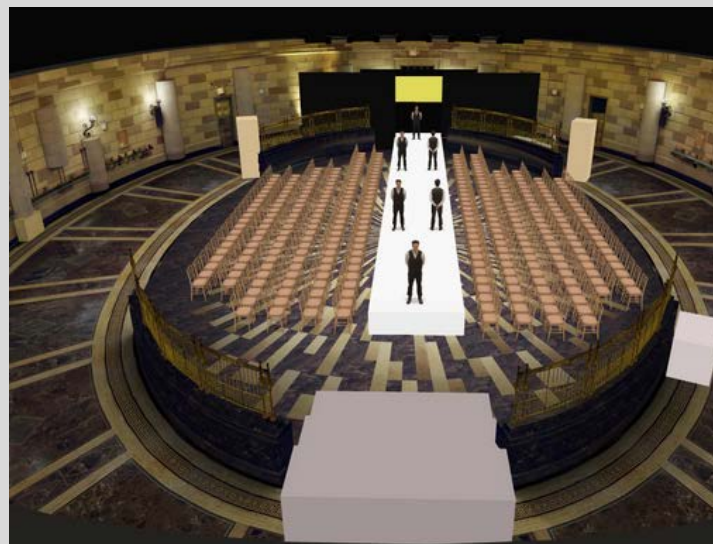
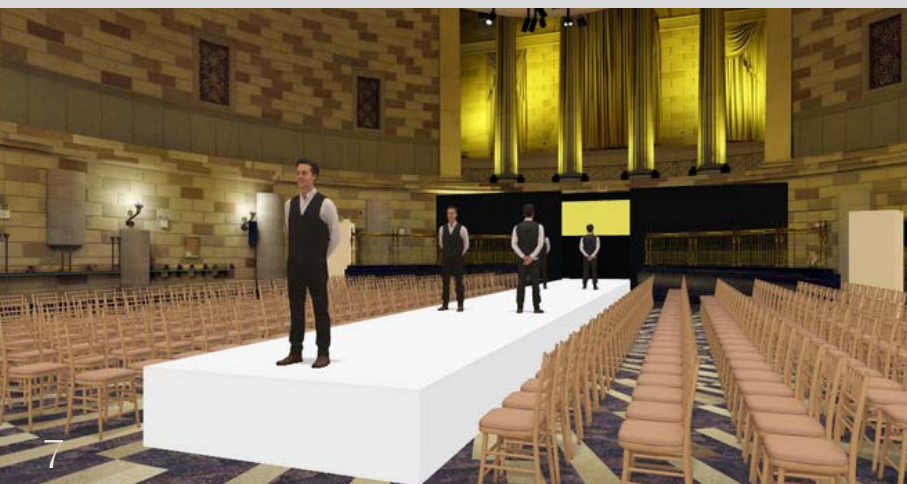


# Venue: Gotham Hall, New York City

Time: 5:30pm - 8:30pm

Address: 1356 Broadway, New York,  
NY 10018

Dress Code: Cocktail Attire







# Sponsor and Donor Packages

We at iBRAIN are excited to announce our upcoming fashion show, scheduled for September 8, 2022. This one-of-a-kind event will showcase brands who are committed to innovating accessible fashion, as well as the runway talents of our students. We will be celebrating their achievements while raising funding and awareness for our organization!

As you may know, iBRAIN is a non-for-profit organization that works with children and adults who have been diagnosed with brain Injury and brain-based disorders. We offer a variety of programs that help them live fulfilling lives, but we need your support to reach even more people!

We'd like to invite you to partner with us for this event by sponsoring our students through one or more of the packages below. Please note that all sponsorships and donations are tax-deductible.



## Title/Partner Sponsor: \$50,000

The Partner Sponsor is an exclusive opportunity for one sponsor. As the Partnering sponsor, you will have the exclusive honor of being a part of the headlining title for the show, offering you prominent visibility and premium positive branding as a championing partner of students with TBIs.

Benefits include:

- Headlining the show with the title: [Your Company] Presents: iBrain Fashion Show 2022
- 30+ tickets to the show, with 15 front row seating
- Invitation to exclusive VIP cocktail reception
- Company name and logo displayed on screens and around the venue
- Opportunity to submit one video clip that will be played during the live event, video should be no longer than two minutes
- Opportunity for a 3 minute presentation on stage
- Opportunity to set up the largest promotional booth within the space to be opened during cocktail hour
- Opportunity to distribute company items to be included in gift bags
- Logo featured on gift bags
- Prominent logo positioning on step and repeat
- Press release announcing partnership
- Gift bag packages for sponsor and guests
- Sponsor recognition on all online/print advertisements and communication materials
- A chance to meet untapped target markets, interact with their families and caregivers for market research
- Tour of iBRAIN facility for a group of up to 5 people

## Platinum Sponsor: \$30,000

- 25 tickets to the fashion show: 5 reserved front row seats, 20 reserved second row seats
- Invitation to exclusive VIP cocktail reception
- Opportunity to set up promotional booth within the space to be opened during cocktail hour
- Opportunity to distribute company items to be included in gift bags
- One page ad on the show guide
- Secondary logo positioning on step and repeat
- Gift bag package for sponsor and guests
- Full page ad on all published communication materials
- Sponsor recognition on all online/print advertisements and communication materials
- A chance to meet untapped target markets, interact with their families and caregivers
- Tour of iBRAIN facility for a group of up to 5 people

## Gold Sponsor: \$20,000

- 20 tickets to the fashion show, 5 reserved front row seats/15 reserved second row seats
- Invitation to exclusive VIP cocktail reception
- Opportunity to set up promotional booth within the space to be opened during cocktail hour
- Opportunity to distribute company items to be included in gift bags
- ½ page ad on the show guide
- Tertiary logo positioning on step and repeat
- Gift bag package for sponsor and guests
- Sponsor recognition on all online/print advertisements and communication materials
- A chance to meet untapped target markets, interact with their families and caregivers for market research

## Silver Sponsor: \$10,000

- 15 tickets to the fashion show, 5 reserved second row seats
- Logo positioning on step and repeat
- Gift bag package for sponsor and guests
- Sponsor recognition on all online/print advertisements and communication materials
- A chance to meet untapped target markets, interact with their families and caregivers for market research

## Bronze Donor: \$5,000

- 12 tickets to the fashion show
- Logo positioning on step and repeat
- Gift bag package for sponsor and guests
- Sponsor recognition on all online/print advertisements and communication materials
- A chance to meet untapped target markets, interact with their families and caregivers for market research

## Single Ticket Donor: \$500

- 1 ticket to the fashion show
- Gift bag package for sponsor
- A chance to meet untapped target markets, interact with their families and caregivers for market research



## Atelier Collaboration Donor:

Are you a fashion designer or clothing brand? We'd like to offer you the chance to collaborate with our students for this event. The CDC estimates that 26 percent (one in four) adults in the US live with some type of disability, and the Atelier sponsorship is an exciting opportunity to learn more about the design needs of a largely marginalized target market, straight from our students who also have a lot of creative ideas! You can get involved at every level: from donating or loaning past collections to designing custom outfits with your chosen student's preferences and needs in mind. You will also have the opportunity to produce a coordinating outfit for the students' wonderful fashion guides who will be assisting your chosen student as they strut down the catwalk.

Benefits include:

- Opportunity to engage with and learn about the design needs of young people living with disabilities
- Opportunity to innovate and trailblaze in the area of accessible design
- Verbal recognition and video documentation of brand's design process during the event
- Collaborative donor recognition on all online/print advertisements and communication materials
- 5 tickets to the fashion show: 3 reserved front row seats, 2 reserved second row seats
- Tour of iBRAIN facility for a group of up to 5 people

## Model Collaboration Donor:

We would love to work with modeling agencies! Now more than ever, brands and consumers are searching for dynamic, authentic, and diverse representation. Take eighteen year old Ellie Goldstein for example. Ellie is a model with Down Syndrome, and she was recently cast as the face of Gucci's color cosmetics campaign. Upon Gucci uploading the campaign images on Instagram, Ellie's photo instantly became the brand's most liked and interacted post of all time. We would love to do the same for our students by spotlighting their modeling skills, alongside some of your talents!

If you are interested in donating the time of some of your models by having them participate as fashion guides to our students on the catwalk, please join us. The models, and therefore your agency, will gain prime positive media visibility as you partner with us at iBRAIN in bringing awareness to a growing sector in the fashion industry.

Benefits include:

- Opportunity to network with participating brands and scout new, diverse talent within our student body
- Opportunity to innovate and trailblaze in the modeling industry
- Verbal recognition and video documentation of the agency during the event
- Collaborative donor recognition on all online/print advertisements and communication materials
- 5 tickets to the fashion show: 3 reserved front row seats, 2 reserved second row seats
- Tour of iBRAIN facility for a group of up to 5 people

## Auction Item Donor:

☐

Yes, I would like to donate auction items.

Note: All donations are welcomed! If the item donated is less than \$100 in value, the item may be combined with other items to create a memorable auction package.

## Gift Bag Donor:

☐

Yes, I would like to donate a gift bag item.

Note: All donations are welcomed! Please prepare at least 250 pieces of the item for iBRAIN before August 2022 to ensure recognition for your donations.

## In-kind Donations:

- Accessories
- Shoes
- Hair/Make-up Services
- Cosmetics
- Food
- Cocktail Hour Beverages
- Media partnerships
- Advertisement Services
- Photography
- Videography





# *Student Profiles*







Ahuva

AGE: 5

**MEDICAL OVERVIEW:**

SPASTIC DIPLEGIA CEREBRAL PALSY  
MICROCEPHALY  
APRAXIA OF SPEECH  
GLOBAL DEVELOPMENTAL DELAYS

**FAVORITE COLOR:**

PURPLE

**FAVORITE ACTIVITY:**

PIANO AND GUITAR

**PREFERS TO WEAR:**

PANTS AND HOODIES

**SPECIAL CONSIDERATIONS:**

TIGHT TONE IN ARMS MAKE SHIRTS  
DIFFICULT TO PUT ON





*Aislynn*

AGE: 14

**MEDICAL OVERVIEW:**

ACQUIRED BRAIN INJURY  
SPASTIC QUADRIPLÉGIC; CEREBRAL PALSY  
SEIZURE DISORDER  
GLOBAL DEVELOPMENTAL DELAYS  
NON VERBAL; NON AMBULATORY  
G-TUBE DEPENDENT

**FAVORITE SONG:**

ANYTHING FROM ENCANTO

**FAVORITE MUSIC ARTIST:**

DUA LIPA

**PREFERS TO WEAR:**

SPORTSWEAR, TRENDY &  
COLORFUL

**SPECIAL CONSIDERATIONS:**

LOOSE FITTING CLOTHES TO  
ACCOMMODATE HIGH TONE AND  
AFO'S





*Amari James*

**AGE:10**

**MEDICAL OVERVIEW:**

CEREBRAL PALSY  
NON VERBAL; NON AMBULATORY

**FAVORITE MUSIC:**

GOSPEL

**FAVORITE SONG:**

WHEELS ON THE BUS

**COMFORT VS FASHION:**

COMFORT

**SPECIAL CONSIDERATIONS:**

NO JEANS OR TIGHT CLOTHING







*Amayah*

**AGE:10**

**MEDICAL OVERVIEW:**

TRAUMATIC BRAIN INJURY;  
PERIVENTRICULAR LEUKOMALACIA  
CEREBRAL PALSY  
LEGALLY BLIND  
NON VERBAL, NON AMBULATORY  
SEIZURE DISORDER  
G-TUBE DEPENDENT

**FAVORITE COLOR:**

PURPLE & PINK

**FAVORITE MUSICAL ARTIST:**

MARC ANTHONY

**PREFERS TO WEAR:**

CUTE T-SHIRTS, LEGGINGS,  
LONG QUIRKY SOCKS

**SPECIAL CONSIDERATIONS:**

GETTING ARMS THROUGH  
SHIRTS CAN BE DIFFICULT  
BECAUSE OF TONE





*Angelica*

**AGE:6**

**MEDICAL OVERVIEW:**

ACQUIRED BRAIN INJURY  
SPASTIC QUADRIPLÉGIC; CEREBRAL PALSY  
GLOBAL DEVELOPMENTAL DELAYS  
NON VERBAL; NON AMBULATORY

**FAVORITE SONG:**

LET IT GO

**FAVORITE SEASON:**

SPRING/SUMMER

**COMFORT VS FASHION:**

FASHION

**SPECIAL CONSIDERATIONS:**

VERY ACTIVE; FREEDOM TO MOVE  
ARM AND LEGS





*Anthony*

**AGE:12**

**MEDICAL OVERVIEW:**

TRAUMATIC BRAIN INJURY  
LENNOX GASTALT SYNDROME  
SEIZURE DISORDER & INTRACTABLE EPILEPSY  
SPASTIC QUADRIPLLEGIC CEREBRAL PALSY  
MICROCEPHALY  
ASTHMA  
CORTICAL VISION IMPAIRMENT  
NON VERBAL, NON AMBULATORY  
G TUBE DEPENDENT

**FAVORITE SONG:**

YOU'RE WELCOME, MOANA

**FAVORITE MUSIC ARTIST:**

DRAKE OR BOB MARLEY

**COMFORT OR STYLE:**

COMFORT

**SPECIAL CONSIDERATIONS:**

NOTHING TOO TIGHT SINCE HE  
IS TUBE FED







*Ariel*

AGE:19

**MEDICAL OVERVIEW:**

CEREBRAL PALSY  
PARTIAL EPILEPSY  
QUADRI-PARESIS  
PERIVENTRICULAR LEUKOMALACIA  
GLOBAL DEVELOPMENTAL DELAY  
HYPOTONIA  
MICROCEPHALY  
SCOLIOSIS  
G TUBE DEPENDENT

**FAVORITE COLOR:**

GREEN & ORANGE

**FAVORITE SONG:**

SALLY SONG

**PREFERS TO WEAR:**

BUTTON DOWN & DRESSES

**SPECIAL CONSIDERATIONS:**

LOVES HORSEBACK RIDING





*Asher*

AGE:11

**MEDICAL OVERVIEW:**

TRAUMATIC BRAIN INJURY  
NON-VERBAL AND NON-AMBULATORY  
QUADRIPLEGIC CEREBRAL PALSY  
DYSTONIA  
PERIVENTRICULAR LEUKOMALACIA  
SEIZURE DISORDER

**FAVORITE COLOR:**

BLACK

**FAVORITE SONG:**

MATILDA THE GORILLA

**PREFERS TO WEAR:**

SHORTS & T SHIRTS

**FAVORITE SEASON:**

FALL





*Benny*

**AGE:5**

**MEDICAL OVERVIEW:**

CANAVAN SYNDROME  
SEIZURE DISORDER  
ASTIGMATISM  
NON VERBAL  
NON AMBULATORY  
G-TUBE DEPENDENT

**FAVORITE COLOR:**

BLUE & YELLOW

**FAVORITE MUSIC ARTIST:**

40 FINGERS

**FASHION VS. COMFORT:**

PREFERS STYLISH SWEATS FROM  
ZARA OR THE GAP

**SPECIAL CONSIDERATIONS:**

OVERHEATS EASILY AND CAN'T  
CONTROL HIS BODY TEMPERATURE





*Bracha*

AGE:5

**MEDICAL OVERVIEW:**

TRAUMATIC BRAIN INJURY  
CEREBRAL PALSY  
NON VERBAL  
G-TUBE

**FAVORITE COLOR:**

RED & GREEN

**FAVORITE MUSIC:**

DISNEY SONGS

**COMFORT OR STYLE:**

STYLE; A FASHIONISTA; LOVES  
TO ACCESSORIZE

**SPECIAL CONSIDERATIONS:**

GETS COLD EASILY, WEARS  
LAYERS, AND BIBS; NO ZIPPERS







*Chloe*

AGE:7

**MEDICAL OVERVIEW:**

CRI-DU-CHAT SYNDROME  
GLOBAL DEVELOPMENTAL  
DELAYS  
NON VERBAL

**FAVORITE COLOR:**

PINK

**FAVORITE SONG:**

LET IT GO

**COMFORT OR STYLE:**

BOTH! LOVES A MATCHING SET

**SPECIAL CONSIDERATIONS:**

NEEDS EXTRA SUPPORT WHEN  
CHANGING DUE TO ACTIVE  
MOVEMENTS





# Christopher

AGE:18

**MEDICAL OVERVIEW:**

GLOBAL DEVELOPMENTAL DELAYS  
CORTICAL VISION IMPAIRMENT  
NON VERBAL  
NON AMBULATORY

**FAVORITE COLOR:**

ORANGE

**FAVORITE SONG:**

UN POCO LOCO, DISNEY'S COCO

**PREFERS TO WEAR:**

BUTTON DOWNS

**SPECIAL CONSIDERATIONS:**

NO SKINNY JEANS DUE TO AFO'S





*Daniel*

AGE: 7

**MEDICAL OVERVIEW:**

CEREBRAL PALSY  
CORTICAL VISION IMPAIRMENT  
SEIZURE DISORDER  
NON VERBAL  
NON AMBULATORY  
DEVELOPMENTAL DELAYS

**FAVORITE SHOW:**

PAW PATROL

**FAVORITE SEASON:**

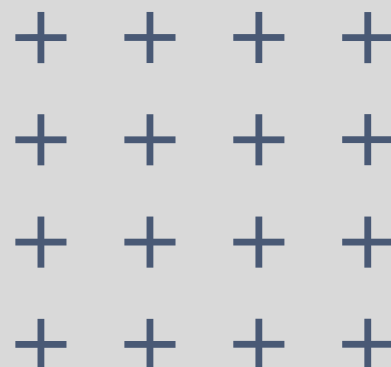
SPRING

**COMFORT OR STYLE:**

COMFORT

**SPECIAL CONSIDERATIONS:**

NO SKINNY JEANS DUE TO AFO'S





*Dani*

AGE: 8

**MEDICAL OVERVIEW:**

TRAUMATIC BRAIN INJURY  
SEIZURE DISORDERS  
NEUROMUSCULAR SCOLIOSIS  
HEMIPLEGIA  
VIRAL ENCEPHALITIS

**FAVORITE SONG:**

WONDER BY SHAWN MENDES

**FAVORITE ACTIVITY:**

DANCING TO MUSIC

**FAVORITE MUSICAL ARTIST:**

THE BEATLES, U2, ABBA

**SPECIAL CONSIDERATIONS:**

PREFERS SOFT LAYERS UNDER  
SWEATERS, PANTS MUST BE  
LOOSE ENOUGH TO FIT BRACES







*Emmett*

**AGE:11**

**MEDICAL OVERVIEW:**

CEREBRAL PALSY  
SPASTIC QUADRIPLÉGIA  
HYPOXIC ISCHEMIC  
ENCEPHALOPATHY  
SEIZURES  
NON VERBAL  
NON AMBULATORY

**FAVORITE COLOR**

GREEN

**FAVORITE SONG:**

TEENAGE DREAM, KATY PERRY

**FAVORITE SPORTS TEAM:**

YANKEES

**PREFERS TO WEAR:**

A POLO SHIRT & A PAIR OF SHORTS





*Ellie*

**AGE:5**

**MEDICAL OVERVIEW:**

CEREBRAL PALSY  
MICROCEPHALY  
CHRONIC ENCEPHALOPATHY  
G-TUBE  
SENSORI-NEURAL HEARING LOSS  
HYPOTONIA

**FAVORITE COLOR:**

PINK

**FAVORITE SONG:**

THE WHEELS ON THE BUS,  
FIVE LITTLE DUCKS

**FAVORITE SEASON:**

WINTER

**PREFERS TO WEAR:**

SHORTS AND PANTS

**SPECIAL CONSIDERATIONS:**

SPASTICITY





*Hope*

AGE:5

**MEDICAL OVERVIEW:**

ACQUIRED BRAIN INJURY  
NON VERBAL  
NON AMBULATORY  
G TUBE DEPENDENT

**FAVORITE COLOR**

PURPLE

**FAVORITE SONG:**

UNDER THE SEA,  
THE LITTLE MERMAID

**PREFERS TO WEAR:**

CASUAL, MATCHING TRACK SUITS,  
FLOWY DRESSES, LEGGINGS,  
OVERSIZE SHIRTS

**SPECIAL CONSIDERATIONS:**

LARGER ARM HOLES IN SHIRTS TO  
ALLOW HER TO DRESS  
INDEPENDENTLY







*Jonna*

**AGE: 9**

**MEDICAL OVERVIEW:**

TRAUMATIC BRAIN INJURY  
LENNOX-GESTALT SYNDROME  
HYPOXIC ISCHEMIC ENCEPHALOPATHY  
CORTICAL VISION IMPAIRMENT  
CEREBRAL PALSY  
HIRSCHSPRUNG'S DISEASE  
TRACHEOSTOMY & G-TUBE DEPENDENT

**FAVORITE COLOR**

PINK, PURPLE AND LATELY GREEN

**FAVORITE MUSICAL ARTIST:**

TAYLOR SWIFT

**PREFERS TO WEAR:**

SEQUINS/SPARKLES  
MERMAID/UNICORN THEMES  
MATCHING SETS  
COSTUMES  
FASHION OVER COMFORT

**SPECIAL CONSIDERATIONS:**

TIGHT LEGGINGS CAN BE  
DIFFICULT WITH AFO'S





Josh

AGE: 4

**MEDICAL OVERVIEW:**

CANAVAN SYNDROME  
SEIZURE DISORDER  
ASTIGMATISM  
NON VERBAL  
NON AMBULATORY  
G-TUBE DEPENDENT

**FAVORITE COLOR:**

BLUE

**FAVORITE SONG:**

MAMA SONG

**FAVORITE SEASON:**

WINTER

**PREFERS TO WEAR:**

MATCHING SETS





*Keilany*

AGE: 14

**MEDICAL OVERVIEW:**

CEREBRAL PALSY  
HYDROCEPHALUS  
HYPOGLYCEMIA  
NON VERBAL  
NON AMBULATORY  
G-TUBE DEPENDENT

**FAVORITE COLOR:** PINK

**FAVORITE SONG:**

HOW FAR I GO, MOANA

**PREFERS TO WEAR:**

T SHIRTS, PANTS, AND DRESSES,  
HAIR ACCESSORIES

**SPECIAL CONSIDERATIONS:**

NO ZIPPERS, BUTTONS, NO TIGHT,  
NOTHING THAT MIGHT STICK ON HER  
G TUBE





*Keily*

AGE: 10

**MEDICAL OVERVIEW:**

TRAUMATIC BRAIN INJURY  
NON VERBAL ; NON AMBULATORY  
FOCAL EPILEPSY  
INTERMITTENT NYSTAGMUS CORTICAL  
VISION IMPAIRMENT, GLOBAL HYPOTONIA  
G-TUBE DEPENDENT

**FAVORITE SONG:**

BETTER WHEN I'M DANCING,  
MEGHAN TRAINOR

**FAVORITE ACTIVITY:**

READING THE VERY HUNGRY  
CATERPILLAR

**FASHION VS. COMFORT:**

COMFORT

**SPECIAL CONSIDERATIONS:**

PRONE TO OVERHEATING







*Kevin*

AGE: 21

**MEDICAL OVERVIEW:**

CEREBRAL PALSY  
DEVELOPMENTAL DELAYS  
BLINDNESS IN HIS RIGHT EYE

**FAVORITE COLOR**

BLUE

**FAVORITE SONG:**

FIREWORK, KATY PERRY

**PREFERS TO WEAR:**

PANTS, T SHIRTS, BUTTONS DOWNS

**FAVORTIE SPORT:**

BASKETBALL

**FAVORITE ACTIVITY:**

BEING OUTDOORS  
SWIMMING





*Lindsay*

AGE:16

**MEDICAL OVERVIEW:**

TRAUMATIC BRAIN INJURY  
LENNOX GASTAUT  
INTRACTABLE EPILEPSY  
CORTICAL VISION IMPAIRMENT  
NON VERBAL; NON AMBULATORY  
G-TUBE DEPENDENT

**FAVORITE COLOR:**

PURPLE

**FAVORITE SONG:**

YOU'RE WELCOME, MOANA

**FAVORITE ACTIVITY:**

LISTENING TO MUSIC





*Luciana*

**AGE:15**

**MEDICAL OVERVIEW:**

CEREBRAL PALSY  
EPILEPSY  
SENSORINEURAL HEARING LOSS  
CORTICAL VISION IMPAIRMENT  
NON VERBAL; NON AMBULATORY  
TRACHEOSTOMY  
VENTILATOR & G-TUBE DEPENDENT

**FAVORITE COLOR**

PURPLE & PINK

**FAVORITE SONG:**

AROUND THE WORLD, BEYONCE

**FAVORITE ACTIVITY:**

SPA DAY

**FASHION VS COMFORT:**

FASHION  
(LIKES TO COLOR COORDINATE BIBS)

**SPECIAL CONSIDERATIONS:**

CLOTHING CANNOT BE TOO  
CLOSE TO HER NECK; NO ZIPPERS





*Luis*

AGE:11

**MEDICAL OVERVIEW:**

TRAUMATIC BRAIN INJURY  
GLOBAL DEVELOPMENTAL DELAYS  
MICROCEPHALY  
CORTICAL BLINDNESS  
SEIZURE DISORDER  
NON-VERBAL ; NON-AMBULATORY

**FAVORITE COLOR:**

BLUE

**FAVORITE SONG:**

TRUE COLORS, PHIL COLLINS

**FAVORITE SEASON:**

SUMMER

**FASHION VS COMFORT:**

COMFORT







*Marco*

AGE:17

**MEDICAL OVERVIEW:**

ACQUIRED BRAIN INJURY  
SEIZURE DISORDER  
PORT-WINE STAIN  
GLAUCOMA  
BLIND IN ONE EYE  
CORTICAL VISION IMPAIRMENT  
ASTHMA  
RECURRING EYE AND EAR INFECTIONS  
NON-VERBAL; NON-AMBULATORY

**FAVORITE COLOR:**

YELLOW

**FAVORITE MUSIC ARTISTS:**

QUEEN AND BILLIE EILISH

**FAVORITE SEASON:**

SUMMER

**SPECIAL CONSIDERATIONS:**

NOTHING TIGHT AROUND HIS NECK,  
AVOID  $\frac{3}{4}$  LENGTH SLEEVES, SHORTS  
BELOW HIS KNEES OR CROPPED  
PANTS, HE WILL TUG AT THESE





*Maria*

AGE:13

**MEDICAL OVERVIEW:**

ACQUIRED BRAIN INJURY  
NON AMBULATORY  
SEIZURE DISORDER  
VISUALLY IMPAIRED  
DEVELOPMENTAL DELAYS

**FAVORITE COLOR:**

PINK

**FAVORITE SONG:**

LA BAMBA

**FAVORITE ACTIVITY:**

BIKING

**FAVORTIE SEASON:**

SPRING

**PREFERS TO WEARS:**

PANTS AND T SHIRTS





*Mykel*

AGE:12

**MEDICAL OVERVIEW:**

PALLISTER-HALL SYNDROME  
LEGALLY BLIND  
CORTICAL VISION IMPAIRMENT  
NON VERBAL; NON AMBULATORY  
TRACHEOSTOMY  
AND G-TUBE DEPENDENT

**FAVORITE COLOR:**

RED

**FAVORITE SONG:**

THREE LITTLE BIRDS, BOB MARLEY

**FAVORITE ACTIVITY:**

SOCCER

**PREFERS TO WEAR:**

KHAKI'S

**SPECIAL CONSIDERATIONS:**

SOME SHIRTS HAVE TO BE CUT  
TO ACCOMMODATE HIS TRACH





*Nekesha*

AGE:7

**MEDICAL OVERVIEW:**

HOLOPROSENCEPHALY  
EPILEPSY  
SYNDROME OF INAPPROPRIATE  
ANTIDIURETIC HORMONE SECRETION  
NON VERBAL

**FAVORITE COLOR:**

PINK

**FAVORITE SONG:**

CANT STOP THIS FEELING,  
JUSTIN TIMBERLAKE

**FAVORITE SPORT:**

BASKETBALL

**FAVORITE ACTIVITY:**

DANCING

**FAVORITE SEASON:**

SPRING







Omari

AGE:11

**MEDICAL OVERVIEW:**

ACQUIRED BRAIN INJURY  
CEREBRAL PALSY  
SEIZURE DISORDER  
GLOBAL DEVELOPMENTAL DELAYS  
OPTIC ATROPHY & PARTIAL BLINDNESS  
NON VERBAL, NON AMBULATORY  
G-TUBE DEPENDENT

**FAVORITE COLOR:**

BLUE & GREEN

**FAVORITE SONG:**

DON'T START NOW, DUA LIPA

**FAVORITE SPORT:**

BASEBALL & BOWLING

**FASHION VS COMFORT:**

BOTH





*Orlando*

**AGE:19**

**MEDICAL OVERVIEW:**

CEREBRAL PALSY  
SCOLIOSIS  
SEIZURE DISORDER  
CORTICAL VISION IMPAIRMENT  
NON VERBAL, NON AMBULATORY  
G-TUBE DEPENDENT

**FAVORITE COLOR:**

RED, BLUE & GREEN

**FAVORITE MUSICAL ARTIST:**

DRAKE

**FAVORITE SPORT'S TEAM:**

BROOKLYN NETS

**SPECIAL CONSIDERATIONS:**

NOTHING TOO TIGHT TO  
ACCOMMODATE FOR G TUBE





*Rachel*

AGE:4

**MEDICAL OVERVIEW:**

INFANTILE SPASMS  
NON VERBAL  
NON AMBULATORY  
GLOBAL DELAYS  
LEGALLY BLIND  
HEARING LOSS

**FAVORITE COLOR:**

RED

**FAVORITE MUSIC:**

DISNEY SONGS

**PREFERS TO WEAR:**

DRESSES AND LEGGINGS

**SPECIAL CONSIDERATIONS:**

SPASMS CAN MAKE DRESSING  
CHALLENGING





*Raffy*

AGE:10

**MEDICAL OVERVIEW:**

ACQUIRED BRAIN INJURY  
SEIZURE DISORDER  
CORTICAL VISION IMPAIRMENT  
SPASTIC QUADRIPARESIS  
HYDROCEPHALUS  
DEVELOPMENTAL DELAYS  
NON-AMBULATORY

**FAVORITE COLOR:**

YELLOW

**FAVORITE SEASON:**

SUMMER

**PREFERS TO WEAR:**

BUTTON DOWN AND JEANS

**SPECIAL CONSIDERATIONS:**

TIGHT TONE IN ARMS CAN MAKE  
DRESSING DIFFICULT







*Rikia*

AGE:16

**MEDICAL OVERVIEW:**

CEREBRAL PALSY  
ACQUIRED BRAIN INJURY  
SEIZURE DISORDER  
DEVELOPMENTAL DELAYS  
NON VERBAL

**FAVORITE SHOW:**

DORA THE EXPLORER

**FAVORITE SPORT:**

BASKETBALL

**FAVORITE SEASON:**

SUMMER

**PREFERS TO WEAR:**

JEANS AND T SHIRTS

**FUN FACT:**

I AM FROM THE BAHAMAS! READ  
MORE ABOUT ME [HERE](#).





*Rodwin*

**AGE:17**

**MEDICAL OVERVIEW:**

CEREBRAL PALSY  
HYDROCEPHALUS  
SEIZURE DISORDER  
DYSTONIA  
LEGALLY BLIND  
G-TUBE DEPENDENT

**FAVORITE COLOR:**

BLUE

**FAVORITE MUSIC:**

CLASSICAL

**FAVORITE SEASON:**

SUMMER

**STYLE OR COMFORT:**

COMFORT

**SPECIAL CONSIDERATIONS:**

NO TIGHT CLOTHES





*Sarah Jane*

**AGE:16**

**MEDICAL OVERVIEW:**

TBI /SHAKEN-BABY SYNDROME  
SPASTIC QUADRIPLLEGIC  
CEREBRAL PALSY  
LENNOX-GASTAUT SYNDROME  
CORTICAL VISION IMPAIRMENT  
NON VERBAL  
NON AMBULATORY  
G-TUBE DEPENDENT

**FAVORITE COLOR:**

BLUE

**FAVORITE SONG:**

BABY, JUSTIN BIEBER

**FAVORITE SEASON:**

SUMMER

**SPECIAL CONSIDERATIONS:**

NO ZIPPERS, NO BUTTONS ON  
SHIRTS/SWEATERS





*Samuel*

AGE: 21

**MEDICAL OVERVIEW:**

CEREBRAL PALSY  
CORTICAL VISION IMPAIRMENT  
NON VERBAL  
NON AMBULATORY  
G-TUBE DEPENDENT

**FAVORITE COLOR:**

PURPLE

**FAVORITE SONG:**

SORRY, JUSTIN BIEBER

**FAVORITE SEASON:**

SUMMER

**FASHION VS. COMFORT:**

FASHION







*Sebastian*

**AGE:11**

**MEDICAL OVERVIEW:**

CYSTIC ENCEPHALOMALACIA  
GLOBAL CNS INJURY  
SEIZURE DISORDER  
CORTICAL VISION IMPAIRMENT  
NON VERBAL; NON AMBULATORY  
TRACHEOSTOMY &  
G-TUBE DEPENDENT

**FAVORITE COLOR:**

GREEN

**FAVORITE SONG:**

LA BAMBA

**FAVORITE SHOW:**

SPIDERMAN & SPONGEBOB

**SPECIAL CONSIDERATIONS:**

DOES NOT LIKE TO WEAR SHOES





*Talon*

**AGE: 5**

**MEDICAL OVERVIEW:**

LENNOX-GASTAUT SYNDROME  
CHRONIC STATIC ENCEPHALOPATHY  
SPASTIC PARESIS  
INFANTILE SPASMS  
HYPSSARRHYTHMIA  
AUTISM  
DEVELOPMENTAL DELAYS  
IDIOPATHIC SCOLIOSIS  
ATONIC/ABSENCE SEIZURES

**FAVORITE COLOR:**

RED & BLUE

**FAVORITE SONG:**

BABY SHARK

**FAVORITE ACTIVITY:**

GOING ON WALKS, LISTENING TO  
MUSIC

**FASHION VS. COMFORT:**

FASHION,  
LOVES TO DRESS UP FANCY





*Winter*

AGE:10

**MEDICAL OVERVIEW:**

ACQUIRED BRAIN INJURY  
SEIZURE DISORDER  
CORTICAL VISION IMPAIRMENT  
SPASTIC QUADRI-PARESIS  
HYDROCEPHALUS  
DEVELOPMENTAL DELAYS  
NON-AMBULATORY

**FAVORITE COLOR:**

PINK

**FAVORITE MUSIC ARTIST:**

CARDI B

**FAVORITE SPORT'S TEAM:**

LAKERS

**FASHION VS. COMFORT:**

COMFORT BUT FLASHY





*Yaffa*

**AGE:15**

**MEDICAL OVERVIEW:**

INFANTILE SPASM DISORDER  
SEIZURES  
GLOBAL DEVELOPMENTAL DELAYS  
NON VERBAL  
NON AMBULATORY

**FAVORITE COLOR:**

BLUE AND YELLOW

**FAVORITE MUSIC ARTIST:**

KATY PERRY

**PREFERS TO WEAR:**

PANTS, T SHIRTS & DRESSES

**FAVORITE ACTIVITY:**

LISTENING TO MUSIC







*Yufana*

**AGE:17**

**MEDICAL OVERVIEW:**

ACQUIRED BRAIN INJURY  
EPILEPSY  
WEST SYNDROME  
NON VERBAL  
DEVELOPMENTAL DELAYS

**FAVORITE COLOR:**

PINK

**FAVORITE ACTIVITY:**

WALKING, DANCING, SHOPPING

**SPECIAL CONSIDERATIONS:**

HYPERFLEXIBLE AND LOVES ALL  
SORTS OF YOGA POSES. SHE  
NEEDS STRETCHY, COMFORTABLE  
PANTS. SHE IS ALSO TACTILE  
DEFENSIVE WITH SENSITIVE SKIN.  
CLOTHING SHOULD NOT BE  
IRRITATING





*Yurisa*

**AGE:12**

**MEDICAL OVERVIEW:**

ACQUIRED BRAIN INJURY  
SEIZURE DISORDER  
DEVELOPMENTAL DELAYS  
HYPOTONIA  
NON VERBAL

**FAVORITE COLOR:**

GREEN

**FAVORITE SONG:**

ELMO'S SONG

**FAVORITE SEASON:**

WINTER

**SPECIAL CONSIDERATIONS:**

SHE CAN DRESS HERSELF WITH  
MINIMUM ASSISTANCE; CLOTHES  
SHOULD NOT HAVE HOLES OR  
ANYTHING SHE WILL PICK AT





*Zaire*

AGE:10

**MEDICAL OVERVIEW:**

ACQUIRED BRAIN INJURY  
DEVELOPMENTAL DELAYS  
NON VERBAL  
NON AMBULATORY

**FAVORITE COLOR:**

PURPLE

**FAVORITE SONG:**

FIREWORK, KATY PERRY

**FAVORITE ACTIVITY:**

DANCING, ARTS & CRAFTS

**FAVORITE SEASON:**

WINTER

**FASHION VS. COMFORT:**

FASHION



Thank you for your interest in becoming a sponsor for the upcoming iBRAIN iCAN Do Anything Fashion Show. With your generous support, we will continue our mission to enrich the lives of young people affected with brain injury and brain-based disorders.

To lock in your package, please refer to page 6 of the booklet.

For inquiries relating to the sponsorship package or the fashion show, please contact Lucy Walters at: [lucy@ibrainnyc.org](mailto:lucy@ibrainnyc.org)

For inquiries relating to iBRAIN and its students, please contact Suzanne Wallach at: [swallach@ibrainnyc.org](mailto:swallach@ibrainnyc.org)



Thank  
You!



We look  
forward to  
working  
with you.