

Contact details :
www.coxmartindesign.co.uk

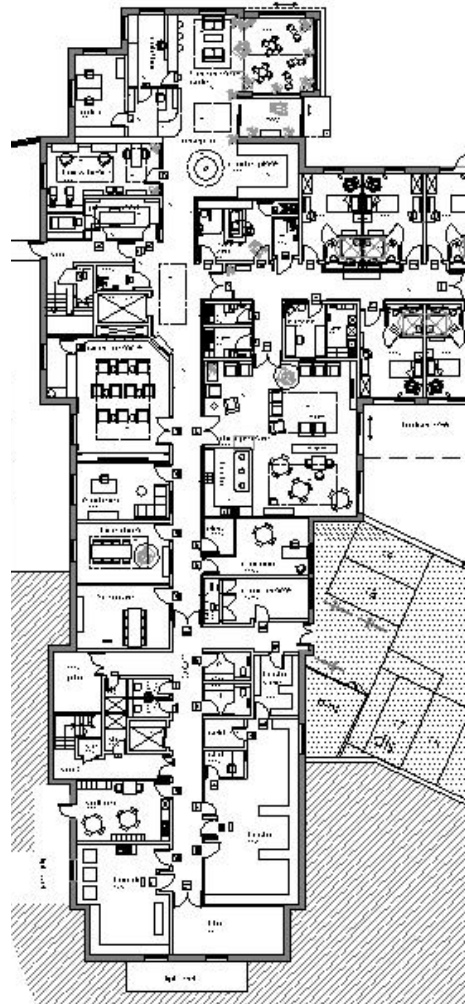
Or 07889 564050

Led by Caroline Martin, an **Architect & Interior designer** with over 25 years professional experience, Cox Martin Design work predominantly within the **healthcare, hospitality & education sectors**. Combining our in-house Architectural and Interior design skills we've worked on numerous healthcare projects, with an emphasis on **elderly care, dementia care & mental health**, from small internal refurbishments to large new-build or conversion schemes.

Past winner of '**best sustainable building**' in the '**Building better healthcare awards**' for a purpose built addiction clinic



View 1- looking south east from Shrewsbury Rd.



Elderly Care ~ Dementia Care ~ Mental Health ~ Healthcare ~ Education ~ Hospitality

Healthcare CV– Caroline Martin RIBA

2023 - Dementia Care– Masterplan & Planning submission for a new build 70 bed care home, conversion of the existing adjoining care home to create 40 ensuite beds with associates communal and staff areas.

2023 - Extra Care– Concept design & preapplication for a scheme of 10 x 1 & 2 bed fully accessible bungalows for residents with **acquired brain injury or Stroke** with a purpose build **Day Care centre** alongside.

2022 - Elderly Care- Scheme design & specification for an area for Hair & beauty, meeting room and staff base in an existing care home.

2021- Elderly Care—Design specification & completion on site to refurbish an existing orangery and temporary conversion to create a Covid visitor's pod.

2021- Elderly Care -Design, Planning submission & Tender details for a 76 -bed care home on a tight steeply sloping site in Surrey.

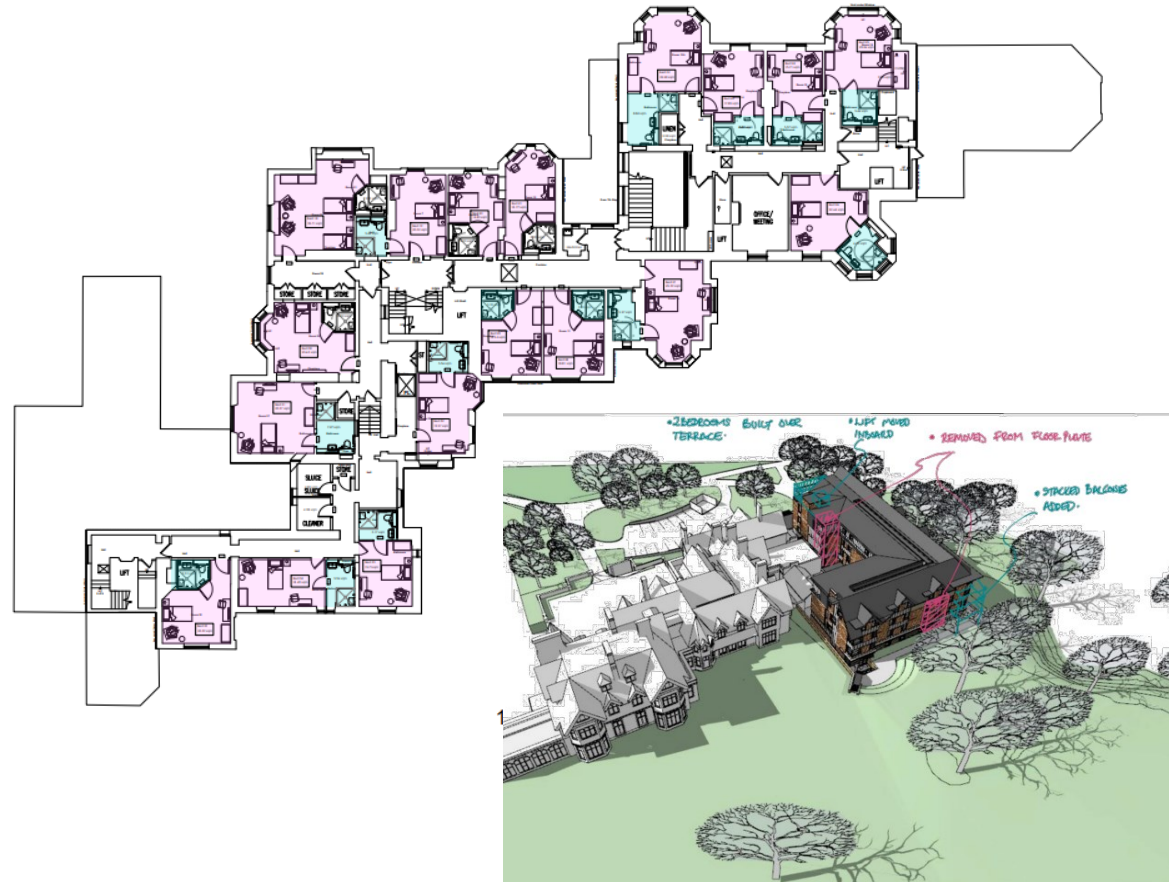
2019 - Mental health PICU –Feasibility & Concept design for an 82-bed private Mental health hospital in Redhill Surrey.

2018- Mental health– feasibility study to convert and extend and an existing 40 bed care home into a 60-bed secure mental health unit with an 8 bed **PICU**.

2018 - Elderly Care- Concept plans to convert an elderly care home in Hampshire to a 25-bed specialist dementia care community.

2016 - LD housing– feasibility/concept design for 6 x1 bed apartments for people with LD, & a 10 bed community with communal & therapeutic areas.

2013 - 2019 Elderly Care -Various interior design & refurbishment schemes for (mental health & elderly care). – Design, specification & implementation.



Whilst with Househam Henderson Architects:

2013 -MHU Stepdown - conversion of a 5-bed house into a 5 bed 'step down unit' Reigate. Planning to completion on site.

2010 - Mental health— Conversion of an existing building to create a specialist **secure mental health** unit for the **deaf**, with 9 ensuite bedrooms and all the associated public areas, OT & therapy rooms. – concept design to completion on site

2008 - Elderly Care Design & Planning submission for a new-build 62 bed **dementia** care unit Staplehurst.

2007 - Mental health - 3000 sqm new build addiction clinic - £7m 12 months on site D&B contract. **Winner of Building Better Health care's 'Best Sustainable Building' 2008** . Breeam Very Good. Project Architect for design, planning , detail design & construction phases.

2006 –Primary Healthcare—Winchester & Basingstoke PCT - Refurbishment works to Operating Theatre staff areas. Design through to completion on site.

2006—Primary Healthcare- Winchester & Basingstoke PCT – Concept design for refurb of Maternity unit to create Midwifery lead birthing unit.

Healthcare CV– Caroline Martin RIBA

