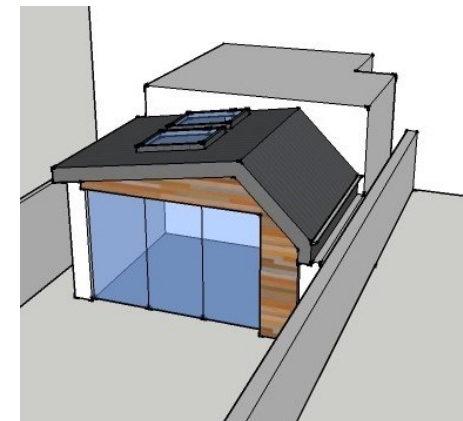


Contact details :
www.coxmartindesign.co.uk

Or 07889 564050

Led by Caroline Martin, an **Architect & Interior designer** with over 25 years professional experience, Cox Martin Design are a design led Architectural Practice based in Dorset & Somerset. Experienced in working on both **private, and developer housing** schemes as well as various **community projects**, we combine our in-house Architectural and Interior design skills, to create well designed, efficient, and beautiful buildings that respond to their context. We have years of experience of taking schemes from initial concepts through to completion on site , and are able to extend, refurbish or design from first principles.



Housing & Community CV– Caroline Martin RIBA

2023 - Private Housing— Concept , & Planning (soon to be submitted) for a 5 bed contemporary home in Surrey.

2023— Private Housing — Concept design and pre-application to convert an agricultural barn into a dwelling under Class Q Permitted development. In Wiltshire.

2023— Developer Housing — feasibility study & Pre-application on a site for 10 4 bed town houses in Reigate.

2023— Developer Housing — 4 x 4bed new family homes & the extension/refurb of 1 existing dwelling. Concept design & Planning, detail design and specification . (Due to start on site 2024.)

2022— Private Housing —Design , planning and detail design/tender to convert a stone building in the curtilage of a listed building into an annex for an adult with Autism. (Due to start on site in 2024.)

2021—Private Housing —Concept design & Planning for a new build dwelling in the grounds of a listed building in a Conservation area. In Dorset.

2019— Assisted Living- — Concept design for the conversion of an existing Victorian house into 3 self-contained apartments (with staff accommodation) for adults with a learning Disability.

2019— Assisted Living — feasibility & space planning to convert an existing mental health unit into a 10 bedded residential community for people with Autism and a learning disability ,with 3 self contained apartments, communal and therapeutic areas along with shared outdoor space.

2019— Private Housing — Concept design & Planning for a new build annex within the grounds of an existing Georgian house in a conservation area to create a 2 bed self contained annex.



Housing & Community CV– Caroline Martin RIBA

2019– Private Housing—extension & remodelling of a detached house in an AONB in Dorset. Services included Concept Design, ,Planning , detail design, specification and tendering.

2019– Developer Housing —Extension and conversion of a 4 storey London townhouse to create 3 duplex apartments. With planning having already achieved we were asked to help with the detail design and contract administration during the build.

2019– Community—Working with community groups we prepared interior design proposals for a new village hall & concept designs for a replacement community shop

2018 Private Housing—2 storey front extension to double the size of a cottage on a prominent corner site in a village location. Services included Concept design and planning.

2018 Private Housing— Internal and external alterations to a listed barn conversion to improve flow, natural daylight and connection to the garden. Design and Planning services provided.

2017 - Private Housing— On a piece of left over land that the self-build client had bought for £15,000 (because 3 previous schemes had been refused Planning) , we were able to design a detached 3 bed house that won unanimous planning approval at the first time of trying.

2016 - Developer Housing- The replacement of a chalet bungalow on a site in Reigate with 2 x 5 bed executive homes. Concept design , Planning through to completion on site, including interior design services. Site challenges included a sand mine under the rear garden, badgers and asbestos!

2015—Developer Housing— The extension and refurbishment of a Victorian terrace in London to create a 5 bed 2 bath family home. Full service from concept design & planning through to completion on

2015—Developer Housing— The extension and refurbishment of a first floor apartment in a 1930's converted house, to create 2 additional bedrooms and a bathroom in the loft space, and full refurbishment throughout. Concept design through to completion on site.

