



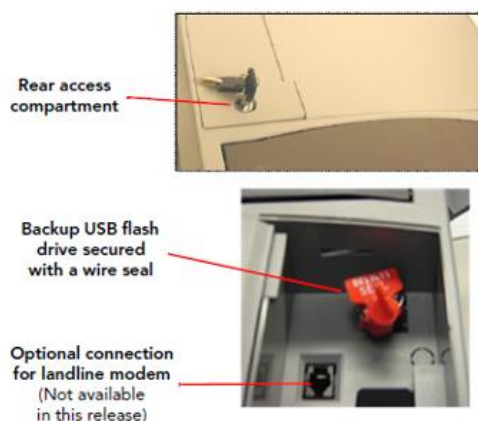
# ES&S DS200 Modem Audit

## Aug 2024

This document will give you a basic overview of how to determine if there is a modem in your DS200. Asking for a screen shot of the admin screen along with the printout of the Configuration Report is one way to confirm that there is no modem in the system. One would also need to review purchase orders as well as perform a physical inspection of the equipment by removing the mother board, and all accessories and review all sides of the boards.

Typically, DS200 model 1.2 and 1.3 hardware versions do not have modems, however DS200 models 1.2.1, 1.2.3, 1.3.5 , 1.3.11 hardware versions may have modems.

The rear access compartment is also secured with a key. This compartment contains the USB flash drive used for a backup flash drive, if used. In ES&S voting systems with 3G modeming capability, the modem antenna is also in the rear compartment. **In 4G systems, the modem antenna is mounted internally.**





Open antenna compartment on the top of machine just behind the screen – lift antenna



The rear access compartment is also secured with a key. This compartment contains the USB flash drive used for a backup flash drive, if used. In ES&S voting systems with 3G modeming capability, the modem antenna is also in the rear compartment. **In 4G systems, the modem antenna is mounted internally.**

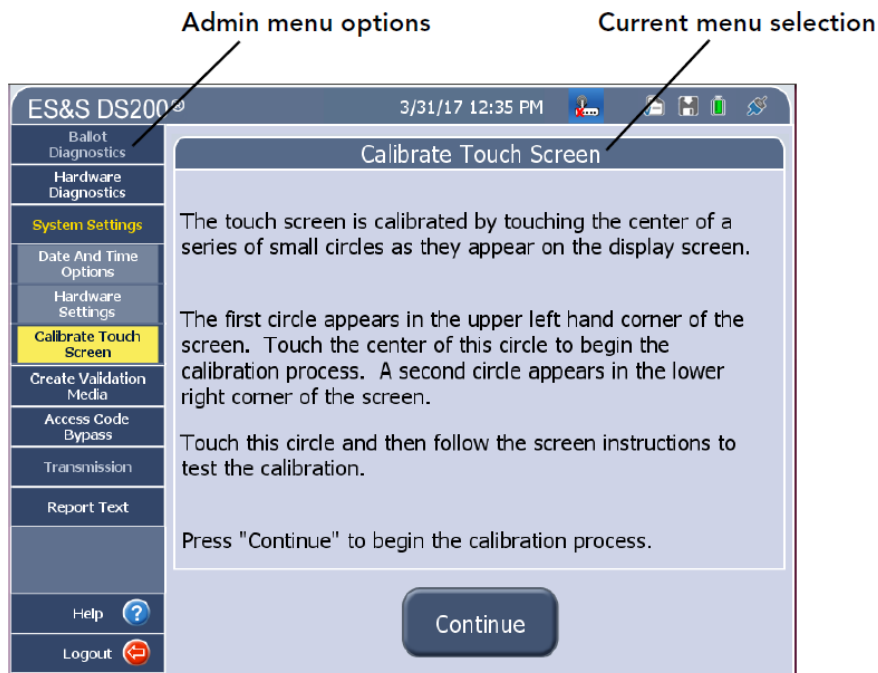
### Modem Status Indicator

Please note that the modem is an optional feature only. The icon is only displayed on the admin screens, the poll-closed screen and when sending results.

Icon	Description
	<b>Modem is present</b> - modem icon
	<b>Modem is not present or not functional</b> - modem with red X

### 4.2.6 Administration Menu

The administration menu appears at the left side of the administration screens. The secondary screen header identifies the screen currently displayed.



Operators with appropriate permissions can access most menu options through a series of sequential steps, while other options are only available while the poll is not open.

## 6.20 Transfer Results by Modem

If you use a DS200 modem to transfer results to an SFTP server, follow the instructions in this section after closing the poll.



If a modem is installed in your DS200, the modem icon is displayed at the top of the screen.

### Note



If your election definition configured the DS200 to automatically transmit results via modem when the poll is closed, go to [Step 5](#).

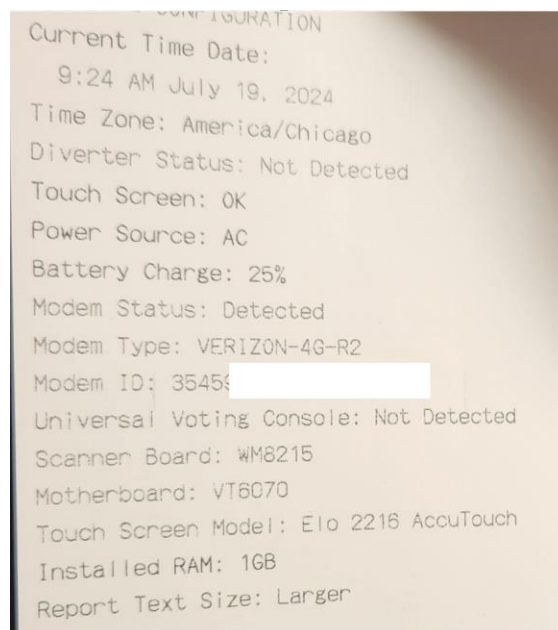
### Important



If you are using a 3G wireless modem, open the rear compartment and raise the antenna for best reception. Units with 4G modems have the antenna installed internally.

If configured in Electionware, specified reports will be printed when the poll is closed and before the modemming process can be initiated.

If a modem is present, the configuration report will look like the following image:

A photograph of a printed configuration report from a device. The text is as follows:

```
CONFIGURATION
Current Time Date:
  9:24 AM July 19, 2024
Time Zone: America/Chicago
Diverter Status: Not Detected
Touch Screen: OK
Power Source: AC
Battery Charge: 25%
Modem Status: Detected
Modem Type: VERIZON-4G-R2
Modem ID: 3545[REDACTED]
Universal Voting Console: Not Detected
Scanner Board: WM8215
Motherboard: VT6070
Touch Screen Model: Elo 2216 AccuTouch
Installed RAM: 1GB
Report Text Size: Larger
```

If no modem is present, the configuration report will look like the following image:

A sample of the Configuration Report follows.

```
*** CONFIGURATION REPORT ***
1:15 PM April 18, 20YY
Unit Serial Number: 0107370046

VOTING DEVICE INFORMATION

HARDWARE CONFIGURATION
Current Time Date:
    1:15 PM April 18, 20YY
Time Zone: America/Chicago
Diverter Status: Not Detected
Touch Screen: OK
Power Source: AC
Battery Charge: 100%
Modem Status: Not Detected
Universal Voting Console: Not Detected
Scanner Board: WM8215
Motherboard: VT6070-R2
Touch Screen Model: ELO AccuTouch 2218
Installed RAM: 1GB
Report Text Size: Larger
```

#### 4.13.1 Keeping the Modem Configuration for Future Elections

When this file is imported via Element Library, it is specific to the current election, and will not be passed into a template for future created elections. In order to make this file a permanent part of the installed Electionware release, it must be copied into the appropriate directory.

The EZIP file obtained from ES&S for import into your election will have a filename identical to that of the default file installed with Electionware.

Copy this file into the following folder, overwriting the default file:

**C:\Program Files (x86)\Election Systems And Software\ElectionWare  
x.x.x.x\ElectionWare\etc\TabulatorResources**



With this file present in this folder, any election created from this release of Electionware will include this file.

**NOTE:** This DS200 manual is from the 6.0.4.0 and 6.0.4.3 Election Systems....we don't believe there is much variance between 6.0.0.0 through 6.0.4.X systems in this documentation version.

[https://www.eac.gov/sites/default/files/voting\\_system/files/EVS6040\\_Cert\\_Scope%28FINAL%29.pdf](https://www.eac.gov/sites/default/files/voting_system/files/EVS6040_Cert_Scope%28FINAL%29.pdf)