



Overwatch

When Safety Matters

Patient Care and Safety Integration Systems

Overwatch

When Safety Matters



Mental health admissions are on the rise and are projected to continue to increase due to the COVID-19 pandemic. New requirements to insure a pro-active, safer and more efficient facility will always exist and continue to push managers to tie-up valuable resources. Having a new system installed each time a gap is identified is costly, time consuming, takes up valuable real estate, difficult to integrate, and can be overwhelming on employees.

Overwatch is a comprehensive system that offers a reliable yet expandable solution in a modular form to assist facilities with the monitoring, alerting, tracking, and managing of patients and critical equipment.

Overwatch takes safety very seriously. It remains to be the driver of our innovation. It's our first step and is continuously monitored from concept through implementation.

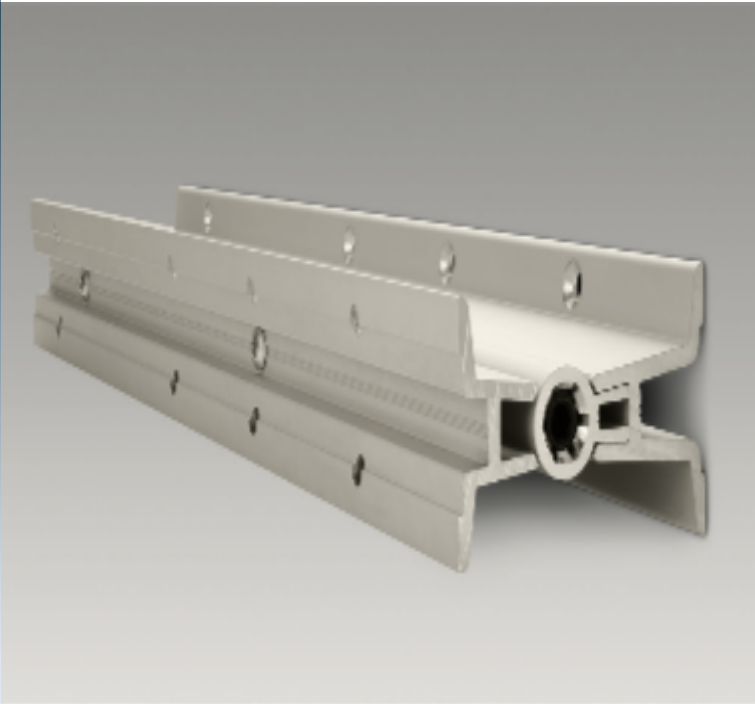
The Overwatch methodology is “Dependability and simplicity in an expandable modular form with paramount safety mechanisms”. Although we use state-of-the-art technology, most parts are available through multiple vendors. Anyone can purchase the controller programming software and the programs are written with industry standards. Our component configuration designed is not only for expandability, but also so that it can be quickly changed out for replacement to reduce downtime and patient impact.

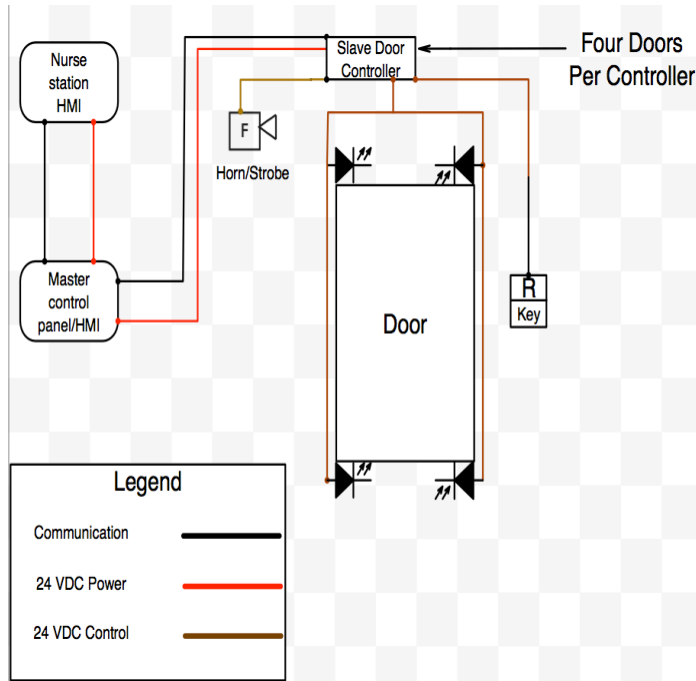


Overwatch

When Safety Matters

Anti-Ligature Door System

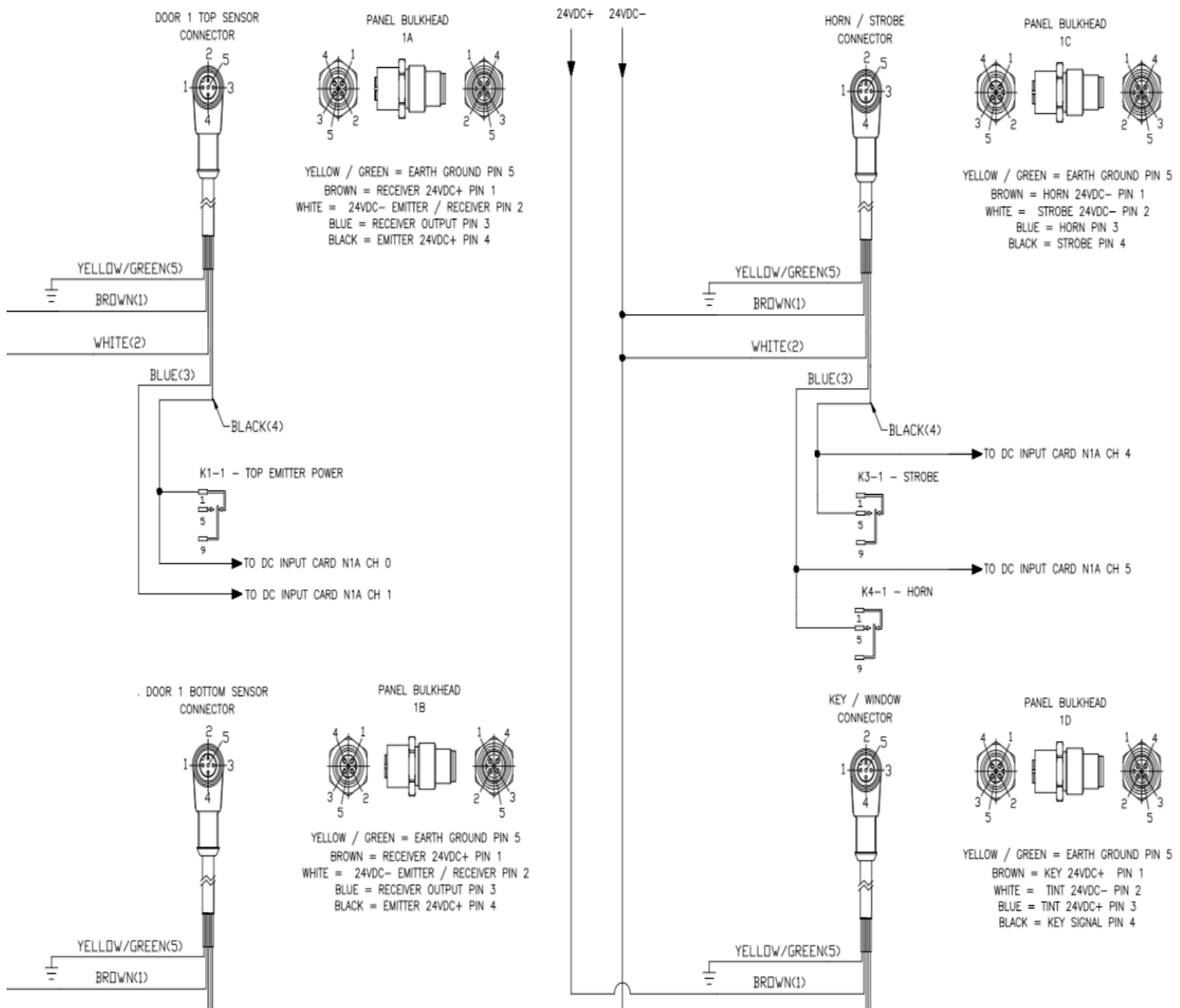




Overwatch

When Safety Matters

Anti-Ligature Door System



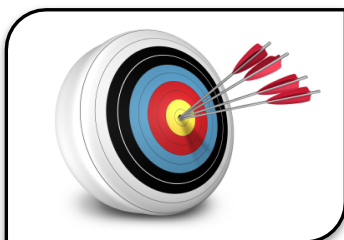
ADVANTAGES



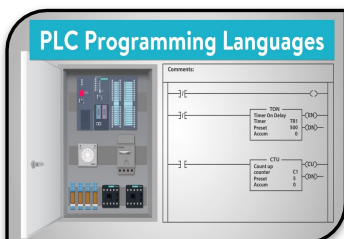
- Expandable
- Flexible
- Reliable
- Simple to maintain/repair
- Low profile and tamper resistant



- System/sub-system monitoring
- Data acquisition
- Single and multi point process control
- Notification and alarm



- Multiple interfaces (i.e. HMI, PC workstation)
- Battery backup with status monitoring
- Event log screen
- All devices are in a failsafe configuration
- Monitored and status updated in real time.
- System trouble audible and visual alarm



- Ladder Diagram (LD)
- Sequential Function Charts (SFC)
- Function Block Diagram (FBD)
- Structured Text (ST)
- Instruction List (IL)



- Anti-Ligature system
- Patient and inventory tracking system
- Access system
- Lighting
- HVAC

Overwatch
When Safety Matters

Overwatch

When Safety Matters

Patient Care and Safety Integration System



**ADAMSON
SOLUTIONS**

38 S. Colonial Park Dr. Marion, IN. 46953

765-669-1894

www.adamsonsolutionsllc.com

Duns: 07867761 CAGE: 6TJP8



The information in this document contains general descriptions of options available, which do not always have to be present in individual cases. All rights reserved. Adamson Solutions LLC has submitted Overwatch to the USPTO and has a patent pending.