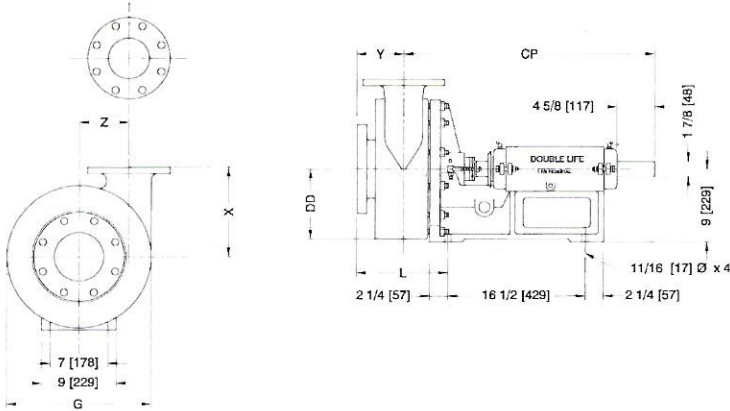


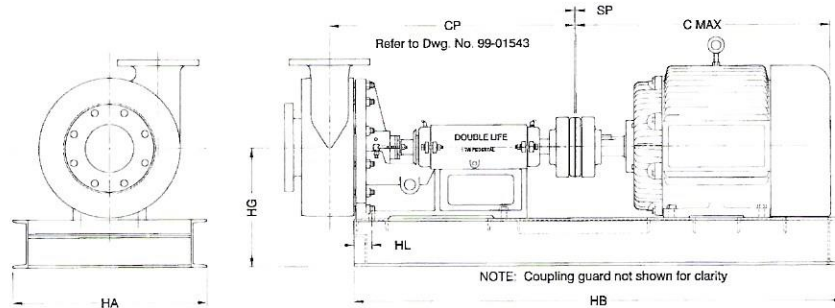
# DLC The Double Life™ Corporation, Inc.



Dimensions below are standard 125 lb.  
Cast Iron or Series 150 Steel Flat Face.

FLANGE DIMENSIONS											
SIZE	ID		OD		BC		THICKNESS		NO OF HOLES	SIZE	
	In.	mm.	In.	mm.	In.	mm.	In.	mm.		In.	mm.
2	2	51	6	152	4 3/4	121	1/16	16	4	3/4	19
3	3	76	7 1/2	191	6	152	3/4	19	4	3/4	19
4	4	102	9	229	7 1/2	191	15/16	24	8	3/4	19
5	5	127	10	254	8 1/2	216	15/16	24	8	7/8	22
6	6	152	11	279	9 1/2	241	1	25	8	7/8	22
8	8	203	13 1/2	343	11 3/4	298	1 1/8	29	8	7/8	22

PUMP SIZE	G		L		X		Y		Z		CP		DD		WEIGHT	
	In.	mm.	In.	mm.	In.	mm.	In.	mm.	In.	mm.	In.	mm.	In.	mm.	lbs.	kgs.
2 x 3	18	457	8 1/4	210	10 3/4	273	4	102	7	178	29 1/2	749	9	229	435	198
3 x 4	18	457	8 5/8	219	10 3/4	273	4 1/4	108	7 1/2	191	30 1/4	768	9	229	455	207
4 x 5	18	457	8 5/8	219	11	279	5 1/2	140	7	178	30 1/4	768	9	229	485	220
5 x 6	18	457	11	279	11	279	5 3/4	146	6	152	31	787	9	229	485	220
6 x 8	23	584	12 3/8	314	14 1/4	362	6 1/4	159	8 3/8	213	31 5/8	803	11 1/2	292	600	273



MOTOR FRAMES	C-MAX		HA		HB		HG		HL		SP		ASSEMBLY WEIGHT (Less Pump)			
	In.	mm.	In.	mm.	In.	mm.	In.	mm.	In.	mm.	In.	mm.	1750 RPM		1150 RPM	
													lbs.	kg.	lbs.	kg.
182T	15 1/4	387	24	610	43 1/8	1095	15	381	2 1/4	57	1/4	6	267	121	271	123
184T	16 1/4	413	24	610	44 1/8	1121	15	381	2 1/4	57	1/4	6	284	129	264	120
213T	18 1/4	464	24	610	46 1/8	1172	15	381	2 1/4	57	1/4	6	355	162	338	154
215T	19 3/4	502	24	610	46 1/8	1172	15	381	2 1/4	57	1/4	6	392	178	380	173
254T	23	584	24	610	52 1/8	1324	15	381	2 1/4	57	1/4	6	497	221	479	218
256T	24 1/2	622	24	610	54 1/8	1375	15	381	2 1/4	57	1/4	6	543	247	508	231
284T	26 1/4	667	24	610	55 1/16	1399	15	381	2 1/4	57	1/4	6	712	324	673	306
286T	27 3/4	705	24	610	58 1/8	1426	15	381	2 1/4	57	1/4	6	748	340	758	345
324T	28 3/4	730	24	610	57 1/8	1451	15	381	2 1/4	57	1/4	6	965	439	947	430
326T	30 1/4	768	24	610	59 1/8	1502	15	381	2 1/4	57	3/8	10	1014	481	964	438
364T	31 1/2	800	24	610	61 1/16	1551	15	381	2 1/4	57	3/8	10	1331	605	1170	532
365T	32 1/2	826	24	610	61 1/8	1553	15	381	2 1/4	57	1/4	6	1331	605	1283	583
405T	37	940	24	610	65 1/8	1654	16	406	2 1/4	57	1/4	6	1515	689	1495	680