



WYNDEMERE

NAPLES PREMIER
PRIVATE GOLF COMMUNITY

MEMBERSHIP OPPORTUNITIES

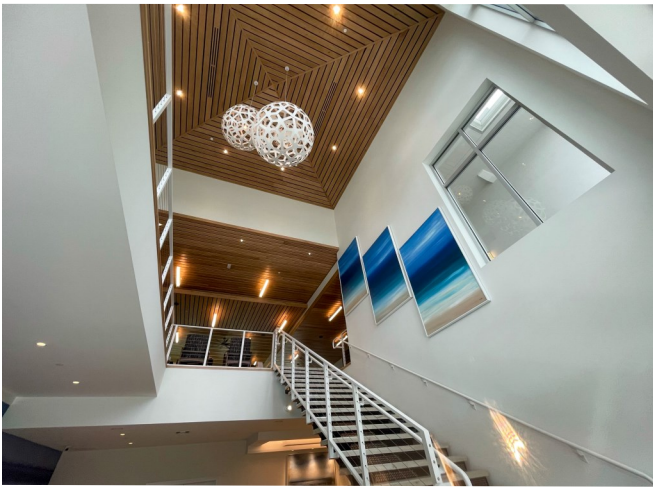
THIS IS WYNDEMERE



At the heart of the Wyndemere community is the 51,600 square foot Clubhouse. The lower level includes the Golf Professional Shop, Men's & Ladies' Golf Locker Rooms, Livingston Room Library, Conference Room, and the Administration Offices. The second story is a spacious dining facility that includes the Vista Lounge, Bar and Terrace with vista views of the golf course as well as the Sunset Dining Room and Terrace. These spaces are utilized for lunch, dinner, card games, private functions and large member events.

The Clubhouse was completely renovated in 2013 and will be included in future phases of our capital improvement projects.

NEW FITNESS, POOL & SPA FACILITIES





THE NEW CASUAL TIEBREAKER & GRAB-N-GO CAFÉ



TENNIS & PICKLEBALL



BOCCE & CROQUET



ARTHUR HILLS-DESIGNED GOLF COURSE



Our three nine-hole configurations and seven tee box locations ensure there's always a new challenge and that course maintenance never gets in the way of an exceptional 18-hole experience. Our golf practice facilities feature a double-ended driving range and a short game practice area complete with chipping green, bunker, and oversized putting green.

Green / White

| Hole | 1 | 2 | 3 | 4 | 5 | 6 | 7 | 8 | 9 | Out | 10 | 11 | 12 | 13 | 14 | 15 | 16 | 17 | 18 | In | Total | |
|----------------|----------------------------------|-----|-----|-----|-----|-----|-----|-----|-----|-----|------|-----|-----|-----|-----|-----|-----|-----|-----|-----|-------|------|
| I | 72.0/132 | 463 | 532 | 188 | 358 | 425 | 295 | 413 | 139 | 507 | 3320 | 341 | 447 | 524 | 177 | 402 | 503 | 187 | 458 | 381 | 3420 | 6740 |
| II | 69.8/123 | 399 | 499 | 157 | 325 | 366 | 276 | 388 | 125 | 485 | 3020 | 328 | 413 | 504 | 147 | 364 | 476 | 163 | 414 | 350 | 3159 | 6179 |
| III | 67.9/119 | 366 | 449 | 140 | 309 | 318 | 266 | 370 | 115 | 469 | 2802 | 316 | 376 | 480 | 137 | 324 | 457 | 155 | 387 | 336 | 2968 | 5770 |
| IV | Men: 66.3/115 Women: 71.1/129 | 355 | 430 | 126 | 292 | 318 | 258 | 352 | 105 | 434 | 2670 | 284 | 362 | 461 | 128 | 296 | 429 | 134 | 351 | 321 | 2766 | 5436 |
| Men's Handicap | 3 | 11 | 9 | 7 | 1 | 17 | 5 | 15 | 13 | | 12 | 6 | 16 | 4 | 10 | 18 | 14 | 2 | 8 | | | |

Gold / Green

| Hole | 1 | 2 | 3 | 4 | 5 | 6 | 7 | 8 | 9 | Out | 10 | 11 | 12 | 13 | 14 | 15 | 16 | 17 | 18 | In | Total | |
|----------------|----------------------------------|-----|-----|-----|-----|-----|-----|-----|-----|-----|------|-----|-----|-----|-----|-----|-----|-----|-----|-----|-------|------|
| I | 71.7/135 | 502 | 384 | 209 | 326 | 434 | 368 | 395 | 177 | 538 | 3333 | 463 | 532 | 188 | 358 | 425 | 295 | 413 | 139 | 507 | 3320 | 6653 |
| II | 69.6/124 | 477 | 358 | 176 | 302 | 391 | 347 | 363 | 161 | 486 | 3061 | 399 | 499 | 157 | 325 | 366 | 276 | 388 | 125 | 485 | 3020 | 6081 |
| III | 67.7/121 | 463 | 308 | 156 | 288 | 368 | 332 | 349 | 147 | 475 | 2886 | 366 | 449 | 140 | 309 | 318 | 266 | 370 | 115 | 469 | 2802 | 5688 |
| IV | Men: 66.1/115 Women: 70.6/126 | 410 | 290 | 142 | 254 | 324 | 320 | 330 | 136 | 459 | 2665 | 355 | 430 | 126 | 292 | 318 | 258 | 352 | 105 | 434 | 2670 | 5335 |
| Men's Handicap | 17 | 5 | 9 | 15 | 1 | 7 | 3 | 11 | 13 | | 4 | 12 | 10 | 8 | 2 | 18 | 6 | 16 | 14 | | | |

White / Gold

| Hole | 1 | 2 | 3 | 4 | 5 | 6 | 7 | 8 | 9 | Out | 10 | 11 | 12 | 13 | 14 | 15 | 16 | 17 | 18 | In | Total | |
|----------------|----------------------------------|-----|-----|-----|-----|-----|-----|-----|-----|-----|------|-----|-----|-----|-----|-----|-----|-----|-----|-----|-------|------|
| I | 72.1/138 | 341 | 447 | 524 | 177 | 402 | 503 | 187 | 458 | 381 | 3420 | 502 | 384 | 209 | 326 | 434 | 368 | 395 | 177 | 538 | 3333 | 6753 |
| II | 70.2/126 | 328 | 413 | 504 | 147 | 364 | 476 | 163 | 414 | 350 | 3159 | 477 | 358 | 176 | 302 | 391 | 347 | 363 | 161 | 486 | 3061 | 6220 |
| III | 68.2/123 | 316 | 376 | 480 | 137 | 324 | 457 | 155 | 387 | 336 | 2968 | 463 | 308 | 156 | 288 | 368 | 332 | 349 | 147 | 475 | 2886 | 5854 |
| IV | Men: 66.4/118 Women: 71.1/129 | 284 | 362 | 461 | 128 | 296 | 429 | 134 | 351 | 321 | 2766 | 410 | 290 | 142 | 254 | 324 | 320 | 330 | 136 | 459 | 2665 | 5431 |
| Men's Handicap | 11 | 5 | 15 | 3 | 9 | 17 | 13 | 1 | 7 | | 18 | 6 | 10 | 16 | 2 | 8 | 4 | 12 | 14 | | | |

EXPERIENCE THE WYNDEMERE LIFESTYLE

Life is better when you're surrounded by friends. At Wyndemere Country Club, you'll find our friendly Members relaxing over cocktails near our outdoor fireplace, tossing a bocce ball on our courts, biking together and enjoying poolside delights. Our calendar of events is packed with activity and entertainment for those who enjoy an active lifestyle and camaraderie.

There are many organized groups to engage members such as Girlfriends of Wyndemere, Veterans of Wyndemere, Cards, Painters of Wyndemere, Yacht & Chowder Society, Book Club, and much, much more. There is something for everyone here.

A home in Wyndemere is more than just a house - it is membership and belonging. By living in Wyndemere, you will be a part of a country club with outstanding amenities. Wyndemere offers a variety of residential lifestyles from condominiums and villas to single family and estate homes with a total of 634 properties on 450 acres in 16 different neighborhoods. When a home is purchased in Wyndemere, it is required to join the Club, the Master Association and the Community Association. To view the homes that are currently available for sale and for rent, go to www.wyndemere.com and click on the Real Estate tab. Open houses are held almost every Sunday afternoon.

Wyndemere's focus on continuous improvement while preserving its culture and identity is truly unique in the Naples private country club market. Our most recent project included a new casual Tiebreaker dining facility with indoor and outdoor dining amenities and a contemporary bar experience. This new building also includes a Racquets Sports Shop, Grab-n-Go Café, and three meeting rooms. Just steps away is our resort-style infinity pool with salt water chlorination, 75 ft. lap lanes, beach entrance, and private hot tub area.

The new Fitness, Wellness & Spa building is a 20,000 sq. ft. two-story building. The lower level features a full suite of spa amenities, men's and ladies' locker rooms, a salt therapy room, physical therapy and hair and natural pedicure salon. On the upper level, you will find over 11,000 sq. ft. of modern fitness equipment and four dedicated group exercise rooms.

For more information, visit www.wyndemere.com



WYNDEMERE, AN AWARD-WINNING CLUB



As Wyndemere Country Club enters our 44th year, we have been honored by receiving our greatest achievement once again by being awarded the Platinum Club of America status reserved for only the best 5-star clubs in the country. The finest Clubs in the nation are acknowledged as such by Members of a well-traveled American and global society that frequent Private Clubs. Whether recognized from inception or through the accumulated passage of time, these Clubs are set apart as domiciles of Excellence for their tradition and history, the ability to attract and retain exceptional Members and the experience they deliver. A Club's reputation and brand are enhanced through orchestrating outstanding events and activities with a strong commitment to the community of which they are a part.



As a Distinguished Emerald Club, Wyndemere is a member of an exclusive group of elite clubs worldwide. The annual Distinguished Clubs of the World award program is conducted by BoardRoom magazine, one of the most respected trade publications serving private clubs. Boardroom magazine developed the Distinguished Clubs of the World award program to recognize and share – with the private club industry as a whole – what it is that Distinguished Clubs do differently, and to do so with the specific goal of improving the Member Experience in every facet of club membership.



As an Audubon Cooperative Sanctuary Program Member for 20 years, Wyndemere has become a local leader in sustainable Golf Course Maintenance practices. Through continued education and certification, our maintenance professionals are able to aid in protecting our natural Southwest Florida environment while ensuring exceptional course conditions year-round.





WYNDEMERE
Country Club

700 WYNDEMERE WAY
NAPLES, FL 34105
239.263.1700
WYNDEMERE.COM

Contact Cheri Schwartz, Membership Director for more information

membership@wyndemere.com

239-643-6336 -Direct