

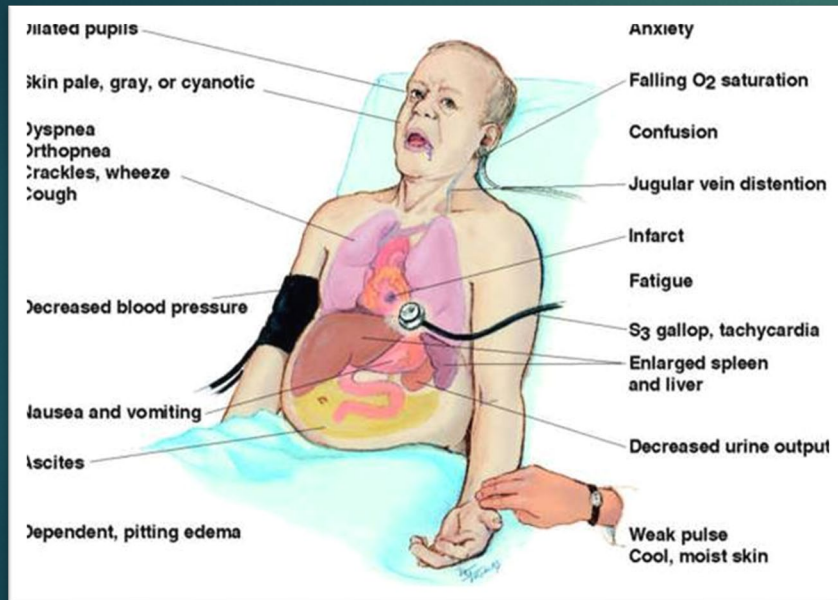
HIM Analytic Solutions LLC

An Eye on Revenue Cycle Improvement



CDI- Tip of Week

Acute/Chronic Congestive Heart Failure



Photograph credit grepped.com

- ▶ Documentation must distinguish between acute and chronic or acute on chronic
 - ▶ Exacerbation or decompensation equates to 'acute on chronic'
- ▶ Document type: Systolic, diastolic or combined systolic and diastolic Or...
 - ▶ Heart failure with reduced ejection fraction (HFrEF) = systolic
 - ▶ Heart failure with preserved ejection fraction (HFpEF) = diastolic
- ▶ Distinguish between fluid overload and true exacerbation!
 - ❖ To pass an audit for "acute" the documentation in the record must paint a picture similar to the patient illustrated on the left.