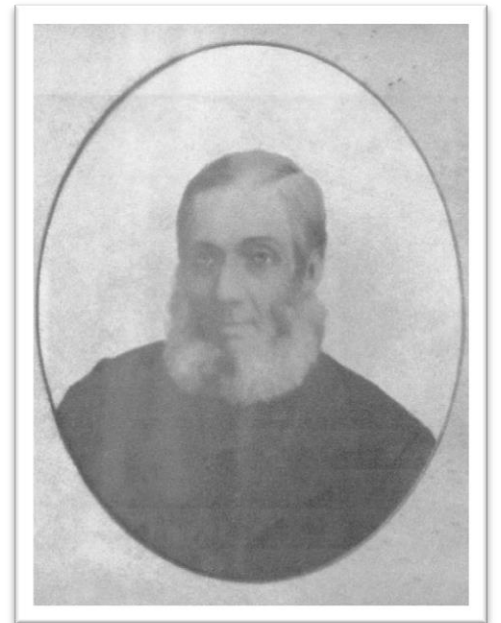


# West Dean Village History Trail

## THE SAWMILL

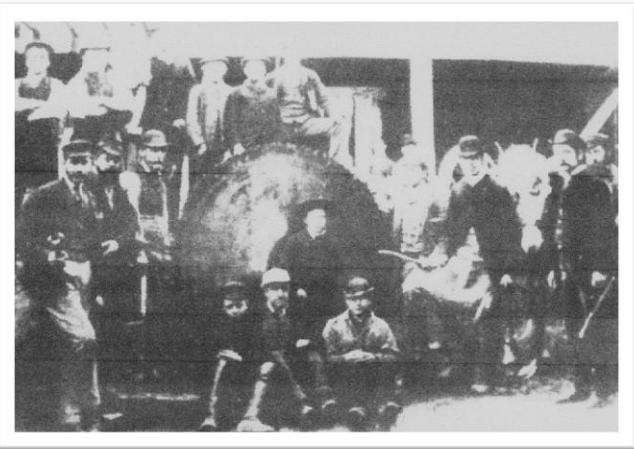
No 4b

In 1886 George East, then in Winchester, moved to the wood yard at West Dean. Among many advantages to this move, were the roads, here then gravel or dirt and much better than the hard surfaces of Winchester for the hooves of the horses which provided the transport. Since 1886 the mill has progressed to be one of Southern England's largest sawmills. Following George's death in 1896 the firm has passed down to each generation, the two Easts who are present directors representing the fifth.



*GEORGE EAST  
THE FOUNDER*

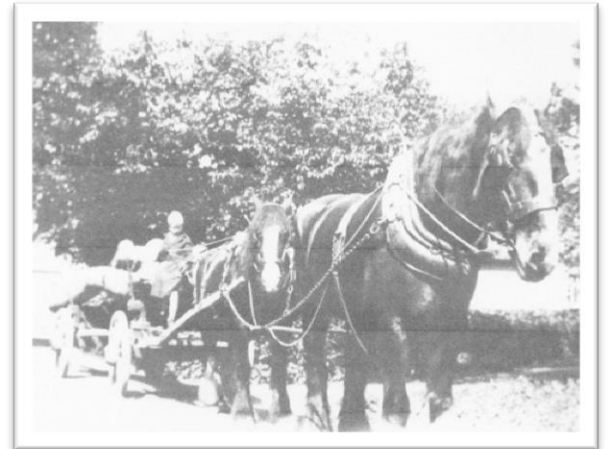
George began by erecting the original sawmill building and having a 40 foot well dug to provide water for the steam engine to power the saws. In 1947 power changed to diesel and in the late 1960s to electricity. Transport also changed over time. Trains were used early on to send timber all around the country and later to bring timber from further than the horses could manage. In the 1930s horses began to be replaced by local hauliers with lorries. Buying their first lorry in 1948 for local deliveries, East Brothers went on to build up their own fleet.



*SOME OF THE EARLIEST  
WORKERS AT DEAN*



*SAWMILL, HORSE AND WORKERS  
EARLY 1920S*



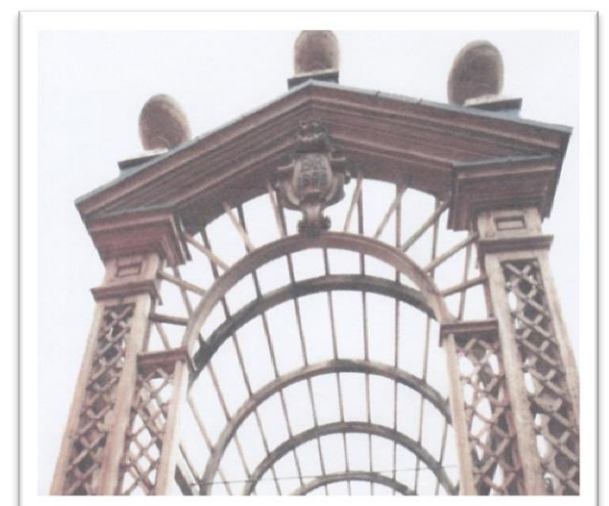
*WITH THE LAST OF THE HORSES, A YOUNG  
ANDREW EAST, LATER TO RUN THE FIRM*

Although the firm has always provided materials for builders, furniture makers and local people, other major products have changed through the years. While demand for brush heads and mining timber diminished demand grew for pallets and timber for road & railway works and sea defences.



*CHARLES EAST AND BERT PIZER  
THERE THROUGH STEAM, DIESEL  
AND ELECTRICITY*

As this is a history trail however, of much interest is the major part the firm has played in providing timber for historical buildings including Windsor Castle, Hampton Court Palace, Alnwick Castle, Bursledon windmill, Eling tide mill and Corfe Castle.



*PART OF THE 300 FOOT LONG BOWER  
AT HAMPTON COURT PALACE*