

**BEAM<sup>®</sup>  
MASTER**  
Master in LED Lights

# VANITY COB

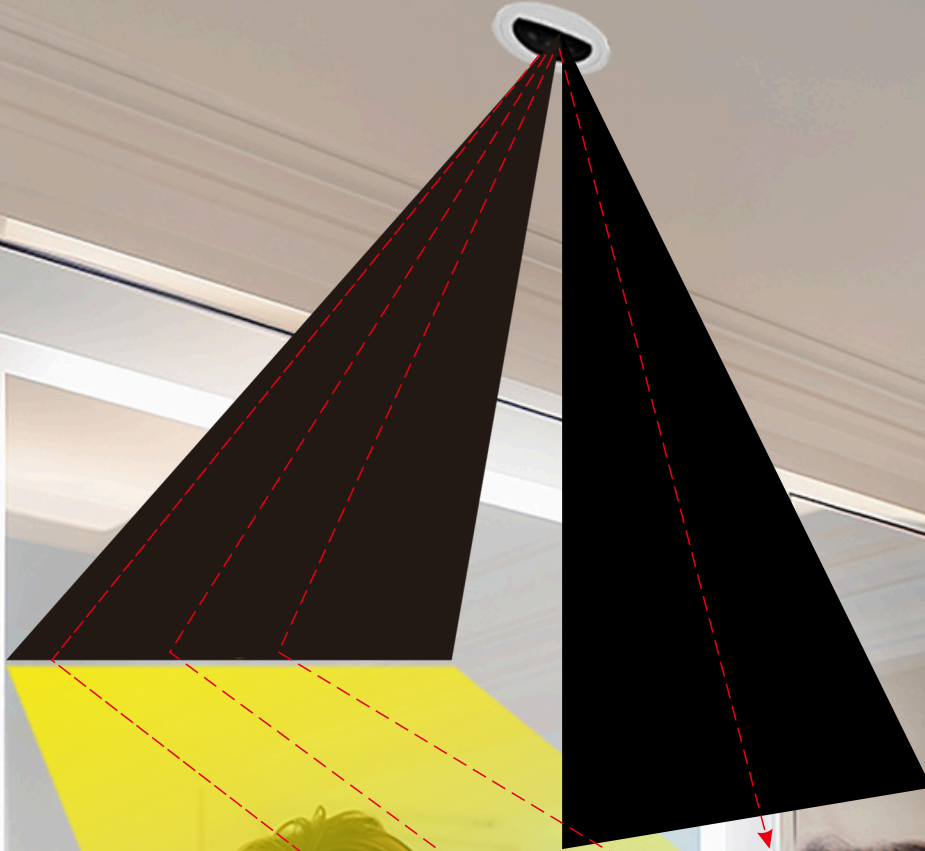
**Wow, you're so beautiful!**



**Beauty Mirror Light**

[www.beammasterled.com](http://www.beammasterled.com)





## BEAUTY MIRROR LIGHT

### Working Philosophy:

- Polarized design, no shadow on the face.
- Special color rendering index R15 up to 98
- High color rendering index, restore the real skin color



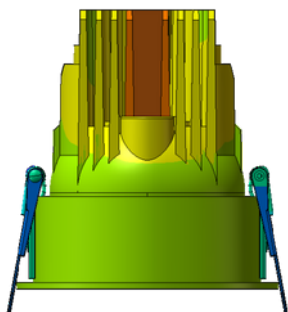
## TRADITIONAL MIRROR LIGHT

- Direct light creates double shadows on the face
- Low color rendering index: RA80, uneven lighting

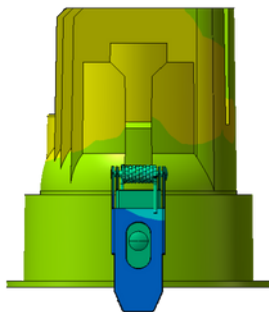


## THERMAL MANAGEMENT

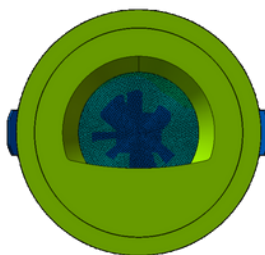
Structure is optimized by advanced FEA technology. Achieving longer lifespan at best cost-efficiency.



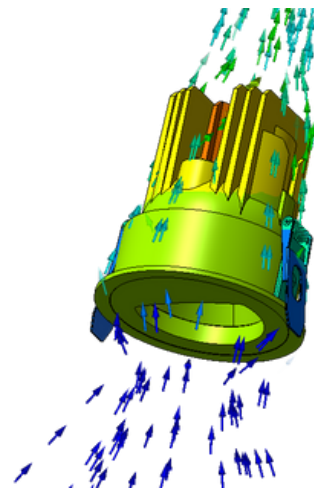
Thermal Conductivity



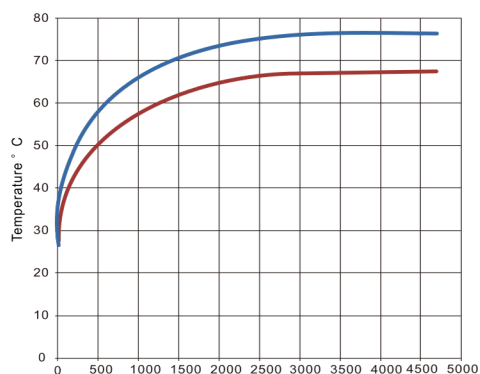
Thermal Conductivity



Thermal Conductivity



Thermal Air Convection

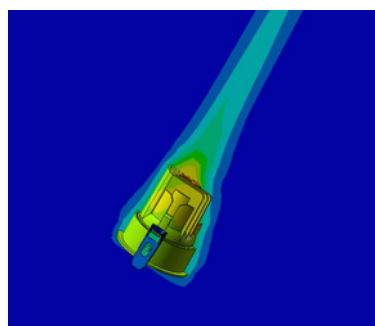


Temperature Rise Curve

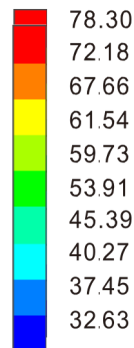
— Maximum temperature on the back of the radiator (solid)  
— COB maximum temperature (solid)

**Structural Assessment:**  
The overall heat dissipation of the lamp housing is efficient and uniform. The material is fully utilized, and there is no blind area of heat dissipation structure. Inside and outside of LED chip and casing The temperature difference is about 10°C, so that the performance of the chip can be fully exerted and maintain a high luminous flux maintenance rate.

**Remarks:**  
Due to the light and thermal efficiency of various chips Differences, the above data are for design reference only. Please refer to the actual sample test for the final result.



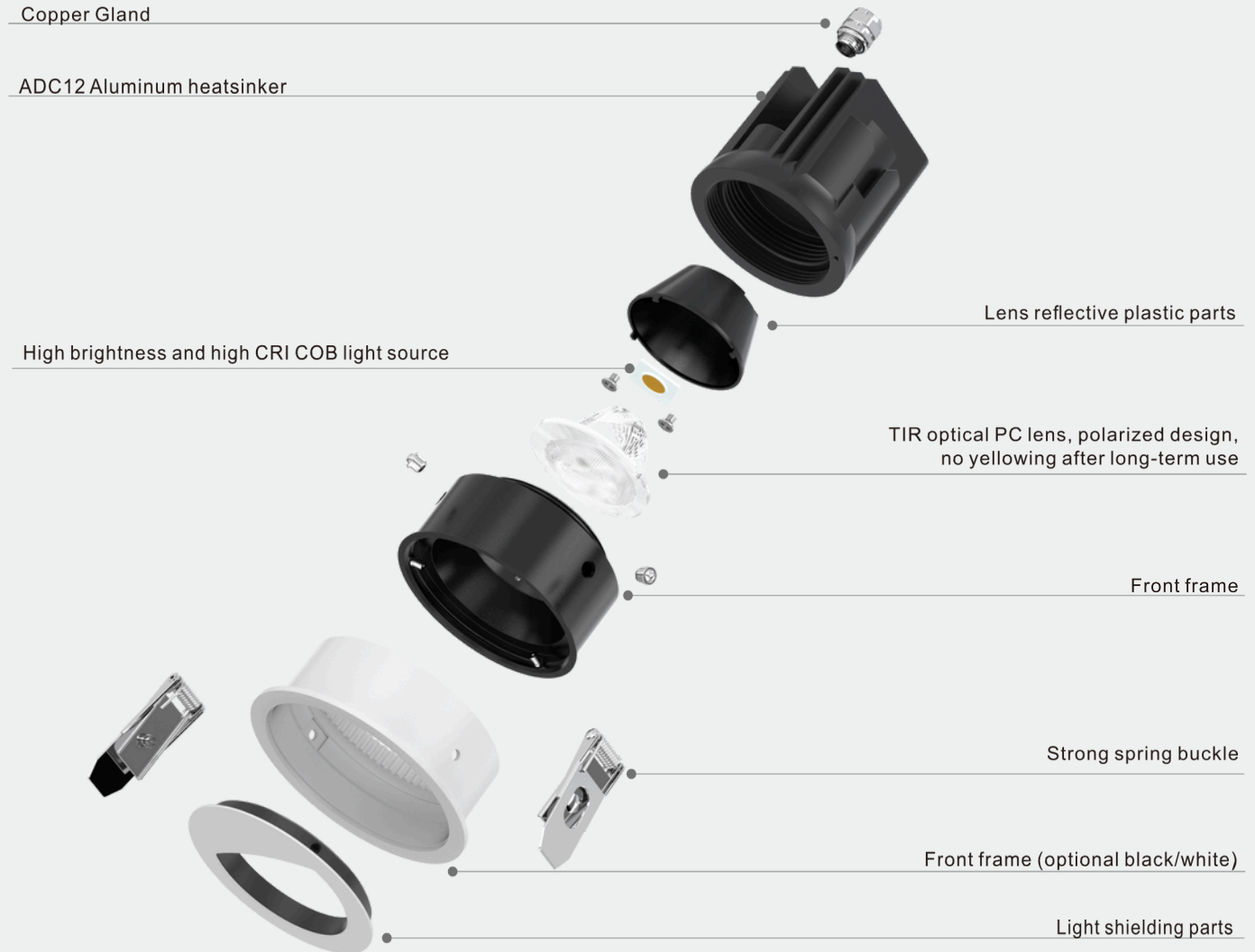
Thermal Air Flow



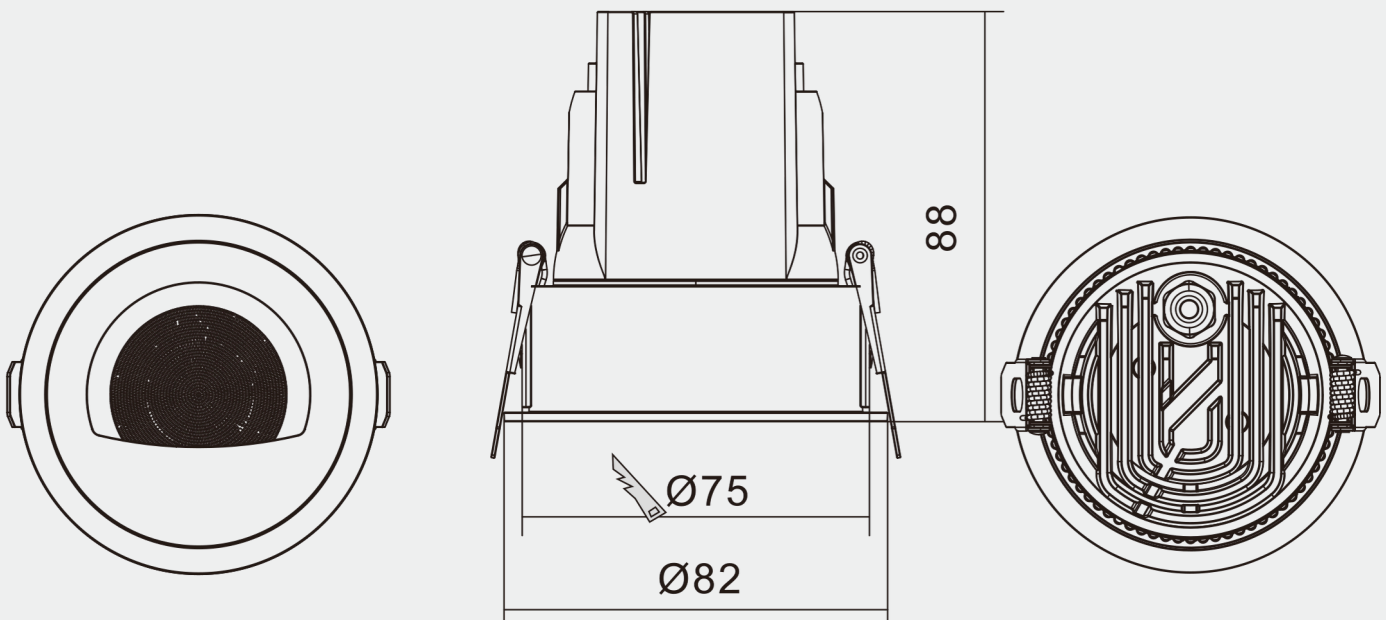
Unit: °C

# VANITY COB

## EXPLODED VIEW



## DIMENSSIONS





## COMPSRISON



### TRADITIONAL MIRROR LAMP

The uneven lighting on the face and heavy shadows on the sides prevented an accurate observation of the actual makeup.

### BEAUTY MIRROR LIGHT

The lighting is even without dead angles, combining the functions of contour light and fill light. The skin is delicate and real without being pale, and the makeup is natural and realistic.

Uneven and unnatural light

Under the effect of top light, large shadows appear on the eye sockets and jaw. When applying makeup, you need to tilt your head to reduce the shadows.

The tip of the nose and cheeks appear highlighted, making it difficult to judge the amount of makeup needed

The light at the chin is not bright enough

The light is natural and even, without highlighting unnecessary parts of the face

Eyes are full of light, sparkling

The light is even and smooth, and the makeup details are clear

The light is reflected by the mirror, which adds brightness to the chin and softens the shadow

# VANITY COB

**BEAM MASTER**  
Master in LED Lights

## OPTICAL CONCEPT

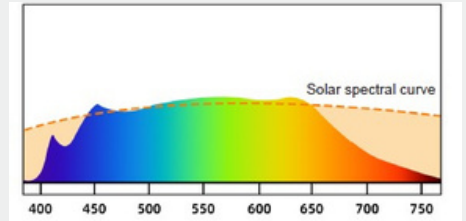


Beauty mirror light:  
The color is accurate  
and transparent, and  
the makeup will not  
go wrong.

CRI:RA98  
IES:Rf98,Rg102

Ordinary mirror headlight:  
The color is dim, and there  
are shadows on the side  
face and bottom.

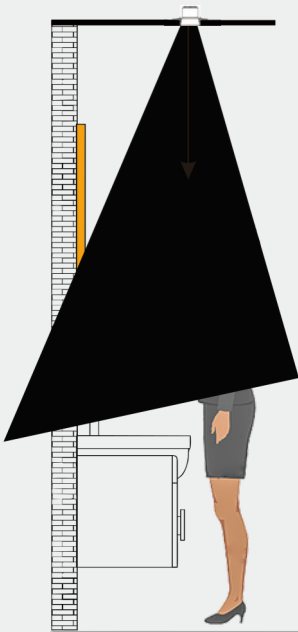
CRI:RA80



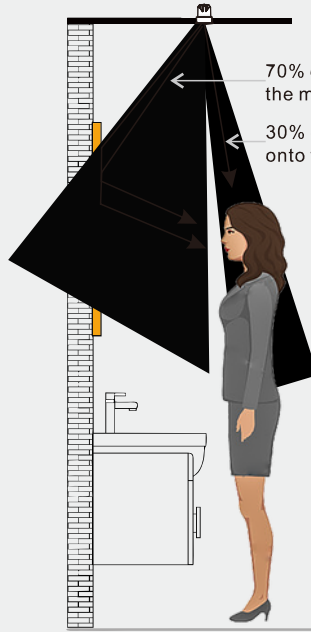
Spectralcurve

### POLARIZED LENS

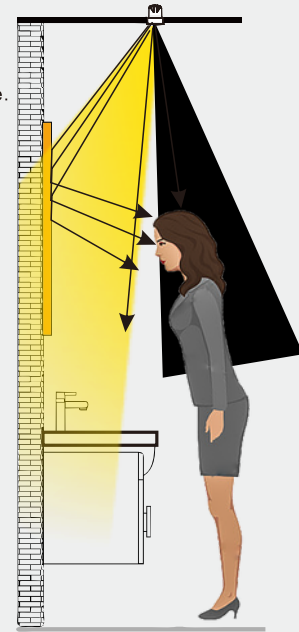
Polarized lenses can effectively  
filter out stray light, reduce glare,  
improve visual comfort, optimize  
light distribution, and make lighting  
more efficient and natural.



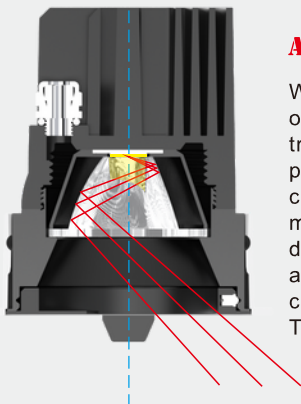
Ordinary mirror lights: direct light, no fill  
light, create double shadows on the face,  
the closer the person is to the mirror,  
the light will be blocked by the head, and the  
less light will be obtained.



Beauty mirror light: The light is reflected  
by the mirror, which effectively eliminates the  
shadows on the face and makes the face softer.

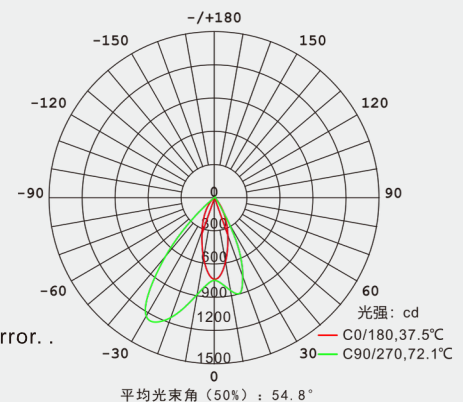


Patented optical design.  
The closer you are to the mirror,  
the more light your face will receive.



### ADVANTAGES OF POLARIZED DESIGN:

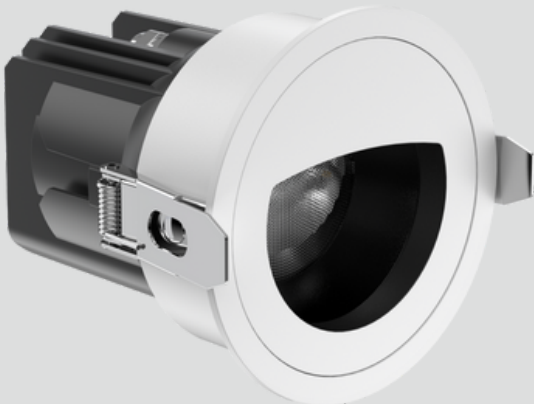
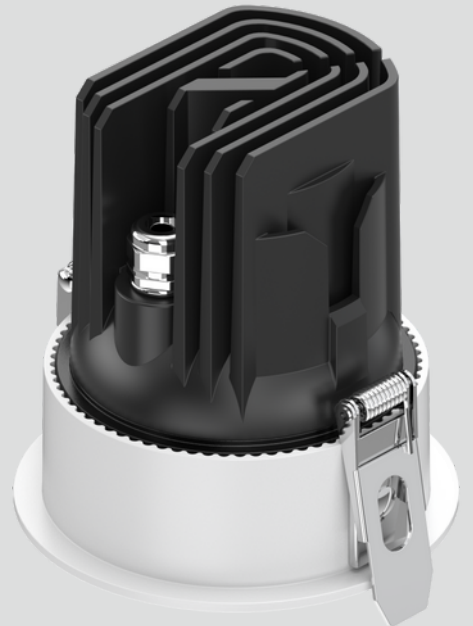
When designing the secondary optical structure  
of the lamp, the 'collimated light path' in the  
traditional TIR lens is modified into a single-sided  
polarized ray path. The advantage of this is that it  
cleverly uses the reflection of the lamp light on the  
mirror surface to illuminate the face. It avoids the  
disadvantage of projecting light on the top of the head  
and forming a shadow on the face when designing the  
collimated light path of the traditional lens.  
Thereby forming a more 'beautifying' face effect in the mirror.



平均光束角 (50%) : 54.8°

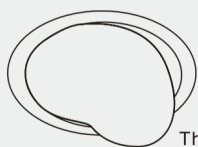
[www.beammasterled.com](http://www.beammasterled.com)





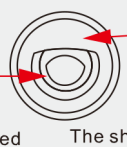
## INSTALLATION INSTRUCTIONS

1. Tear off the film



The polarized lens towards the mirror

2. Counterpoint



The shielding side towards the front of the person

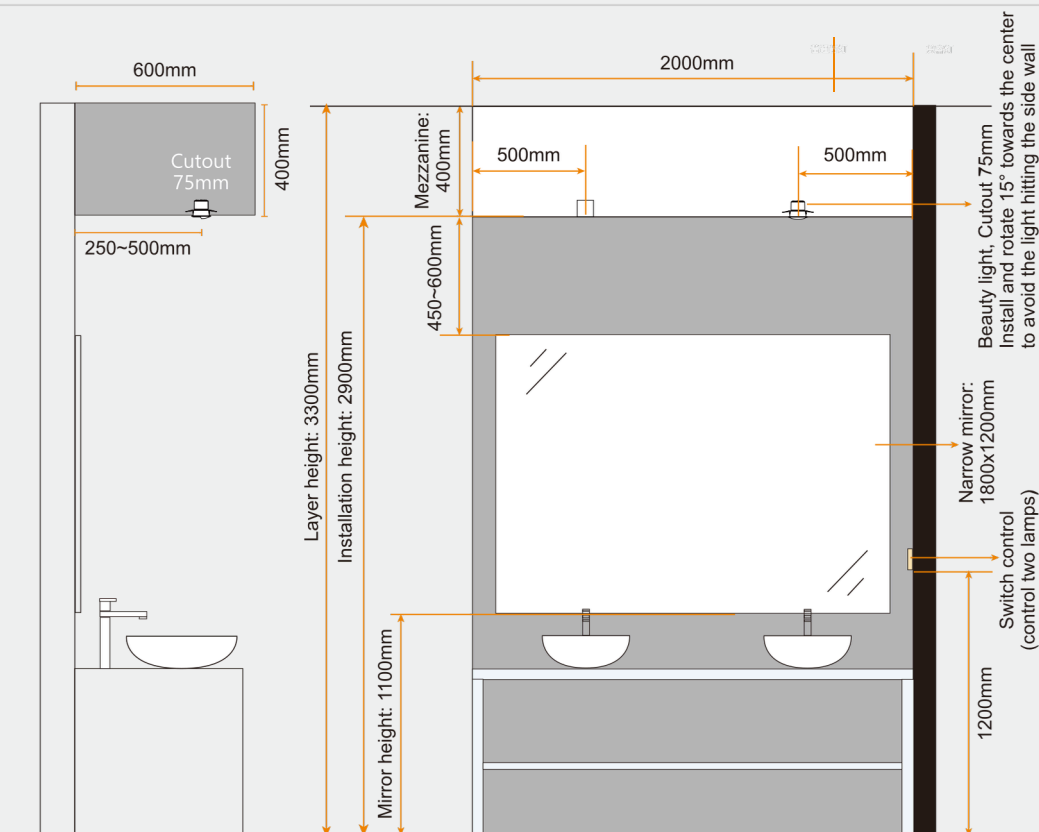
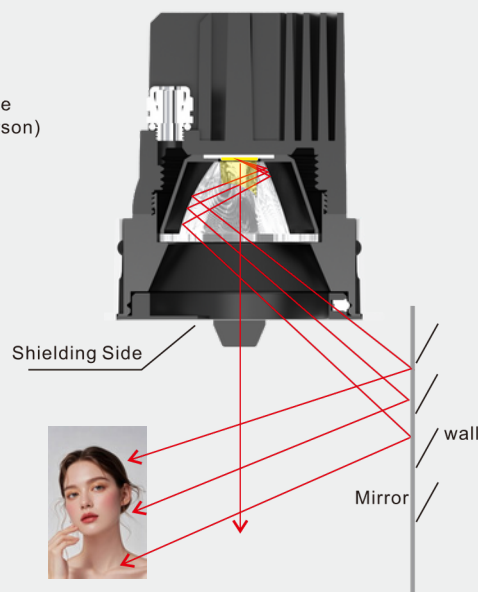
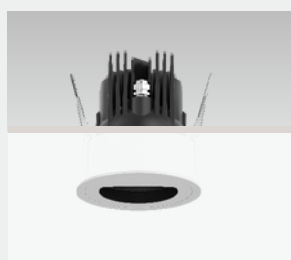
3. Installation



Central axis installation

Mirror

(The shielding side towards the front of the person)



Serial number	Person height	Counter width	Distance from the top of the mirror to the ceiling	Horizontal distance from the center of the lamp to the mirror
A	1.4-1.75m	50-60cm	30cm	30-40cm
B	1.6-1.95m	50-60cm	40cm	40-60cm





AT BEAM MASTER,  
EVERY BEAM TELLS A STORY OF DESIGN AND  
DETAIL.

WE OFFER:

**SKD | CKD | OEM | ODM**

- READY STOCK FOR QUICK AVAILABILITY
- FAST PAN-INDIA DELIVERY
- PRECISION ARCHITECTURAL LIGHTING
- INNOVATIVE AND ELEGANT DESIGNS

**Light Mart**  
Complete Lighting Solution

**SKD | CKD | OEM | ODM**

**Manufacturer & OEM: Premium LED  
Lights, LED Drivers & fixtures**

**27 , PODDAR PLAZA ,  
NEW SIYAGANJ , INDORE (M.P.),  
452003 , INDIA**

**PRATYUSH AGRAWAL**



**+91 888 99999 73**



**WEBSITE**

