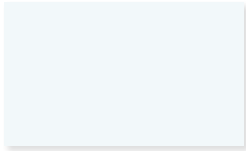


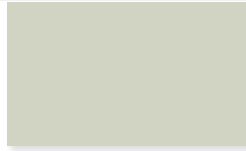
Standard Colors



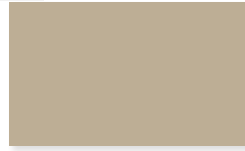
Regal White
SR=.72 E=.82



Almond
SR=.65 E=.84



Sandstone
SR=.60 E=.85



Surrey Beige
SR=.49 E=.85



Sierra Tan
SR=.46 E=.85



Ash Gray
SR=.51 E=.77



Slate Gray
SR=.38 E=.85



Musket Gray
SR=.32 E=.84



Charcoal Gray
SR=.32 E=.88



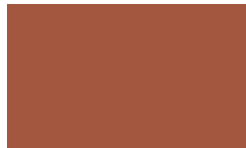
Patina Green
SR=.42 E=.75



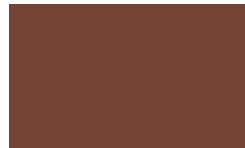
Slate Blue
SR=.30 E=.83



Evergreen
SR=.25 E=.79



Terra Cotta
SR=.42 E=.82



Colonial Red
SR=.29 E=.86



Seal Brown
SR=.30 E=.86



Buckskin
SR=.37 E=.82



Medium Bronze
SR=.29 E=.84



Aged Bronze
SR=.30 E=.85



Copper Brown
SR=.26 E=.82



Dark Bronze
SR=.26 E=.81

Premium Colors



Matte Black
SR=.27 E=.84



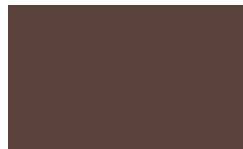
Felt Green
SR=.25 E=.77



Hartford Green
SR=.29 E=.83



Brite Red
SR=.40 E=.85



Burgundy
SR=.26 E=.84



Regal Blue
SR=.22 E=.80

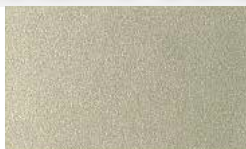
Metallic Colors



Galvalume



Silver Metallic
SR=.57 E=.62



Champagne
SR=.42 E=.79



Weathered Galvalume
SR=.44 E=.63



Copper Metallic
SR=.49 E=.88

Low Gloss - Low Sheen Colors



Slate Gray
SR=.34 E=.84



Copper Brown
SR=.25 E=.85



Aged Bronze
SR=.26 E=.84

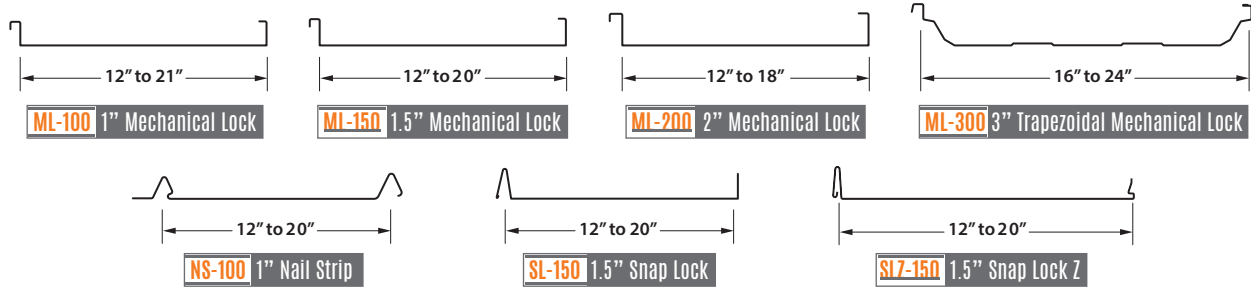


Dark Bronze
SR=.29 E=.85

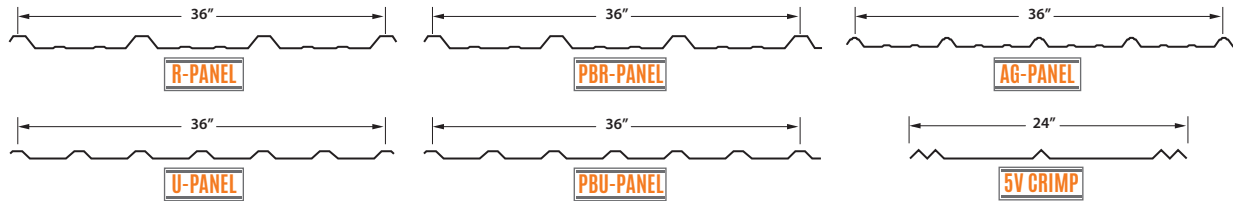


Medium Bronze
SR=.27 E=.86

STANDING SEAM PANELS



EXPOSED FASTENER PANELS



PHYSICAL AND PERFORMANCE PROPERTIES⁽¹⁾

Specular Gloss at 60° ASTM D 523 ⁽²⁾	Typical: 1-40
Pencil Hardness ASTM D 3363	F - 2H
T-Bend ASTM D 4145	0T to 3T ⁽³⁾ , No loss of adhesion
Cross Hatch Adhesion ASTM D 3359	No loss of adhesion
Reverse Impact ASTM D 2794	HDG or Galvalume: 3x metal thickness inch-pounds, No loss of adhesion
	Aluminum: 1.5x metal thickness inch-pounds, No loss of adhesion
Humidity Resistance	
100% RH 2,000 Hours ASTM D 2247	HDG or Galvalume: no field blisters
100% RH 3,000 Hours ASTM D 2247	Aluminum: no field blisters.
Salt Spray Resistance	
1,000 hours ASTM B 117	HDG or Galvalume: creep from scribe no more than 1/16" (2mm), no blisters
4,000 hours ASTM B 117	Aluminum: no creep from scribe, no blisters
South Florida Exposure	
ASTM D 2244	Color: No more than 5Δ Hunter units at 35 years
ASTM D 4214	Chalk: Rating no less than 8 at 35 years
	Film Integrity: 35 years
Flame Test ASTM E 84	Class A coating
Water Immersion 500° Hours 100 F ASTM D 870	No Loss of adhesion
Dew Cycle Weatherometer 1000 Hrs. ASTM D 3361	Color change: No more than 5Δ Hunter units
	Chalk: Rating no less than 8
Water Immersion 500° Hours 100 F ASTM D 870	75 ± 5 liters

- All substrates must be properly cleaned and pretreated.
- American Society for Testing and Materials.
- Durapon 70 is not designed to bridge cracks in the substrate. Due to variability of heavy gauge and HDG metal, some fracturing or rupturing of the substrate is possible with subsequent rupturing of the coatings.
- Varies by color. For details on health, safety and handling information, Material Safety Data Sheets are available upon request.
- Oil Canning is inherent to roll formed products and shall not be cause for rejection. To help reduce oil canning use 24 gauge or thicker.
- Flat surfaces will display slight waviness commonly referred to as Oil Canning. This phenomenon is caused by steel mill production tolerances and will not be accepted as cause for field rejection.
- Galvanized, Galvalume, Acrylume or Paint Grip are unfinished products. The color, spangle and acrylic finish (anti-finger print coating) will vary and is not reason for rejection.
- Deposits/Special Order: All deposits are final and non-refundable on special orders.



Quality Metals

San Antonio (210) 227-7276

Dallas (972) 331-6800

McAllen (956) 627-2826

Houston (713) 944-4480

www.saqualitymetals.com • sales@saqualitymetals.com

