



TRANSFORMING LIVES
Through Skilling

Supporting Partners

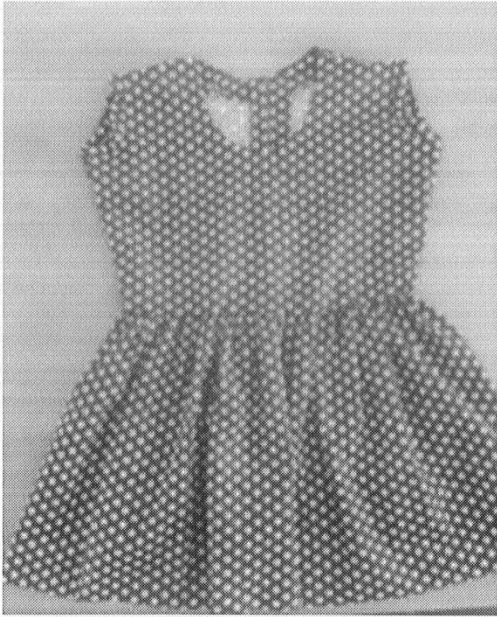


CHAPTER - 11

**DRAFTING & PATTERN MAKING FOR KID'S
WEAR**

11.1 Drafting Pattern Making for Baby Frock

Tools: Measuring tools, cloth, pattern, scissors, inch tape, marking chalk and paper.

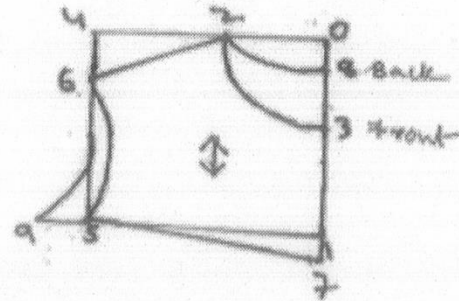


Measurements:

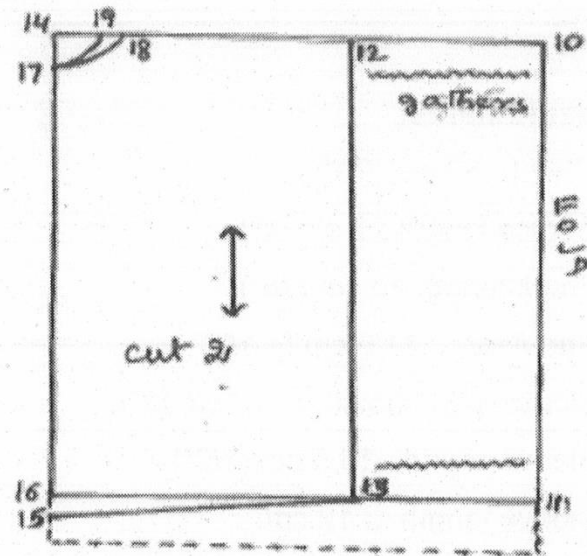
- Chest...50 cm (20").
- Bodice length 10 cm (4").
- Frock length 45 cm (18").
- Shoulder ... 11.5 cm (4 1/2").
- Sleeve with shoulder...23 cm (9").
- Sleeve-round...16.5 cm (6/2").
- Sleeve length ... 12 cm.
- Bodice-length=One fourth chest less 2.5 cm (1").

Instructions for Drafting

- Front (bodice) is square lines from 0, on a four layer fold, with folds at 1-0 and 4-0.
- = bodice length plus 1 cm (1/4").
- = One twelfth chest.
- = One twelfth chest plus 1 cm (1/4").
- Shape front neck 3-2.
- = shoulder plus 1 cm (1/4").
- Square down from 4 to 5.
- $6-4 = 1.5$ cm (1/2"); join 2-6.
- Shape Scye 6-5.
- $7-1 = 1.5$ cm (1/2") shape 7-5.
- Portion 1-7-5 is only for the front.
- Back is $8-0 = 1.5$ cm (1/2").
- Shape neck 8-2.
- $9-5 = 1.5$ cm (1/2").
- Shape scye 6-9
- Full length of frock less bodice length = skirt length.
- The bottom round of skirt is generally kept double the chest measure + about 25 cm (10").
- Full length of frock minus bodice = skirt length.
- $11-10 =$ Skirt length plus 1.5 cm.
- $12-10$ and $13-11 =$ one fourth chest, extra material for gathers on pleats 10 to 15 cm extra.
- $14-12 =$ one fourth chest plus 4 cm.



- 15-13 = One fourth chest plus 6-5 cm (2 1/2") or 15-11 = one fourth bottom round plus 1 cm.
- Join 14-15; 16-15 = 1.5 cm.
- Shape bottom 13-16; 17-14 2.5 cm.
- 18-12 = (i.e. shoulder+ 1 cm) same as 5 to 1 of bodice shape.
- Front scye 18-17.
- 19-18 = 1.5 cm (1/2"). Shape back scye 19-17.
- Keep 5 to 10 cm (2 to 4").
- Below 11-13-16 for in turns.



The unfolded parts:

- 1 = back skirt,
- 2 = front skirt,
- 3 = front bodice;
- 4 = back bodice,
- 5 and 6 = sleeves.

Puffed Sleeve

- They gather at the armhole as well as at sleeve bottom. For this, it is necessary to fix the proportion of gathers, before cutting the sleeve.

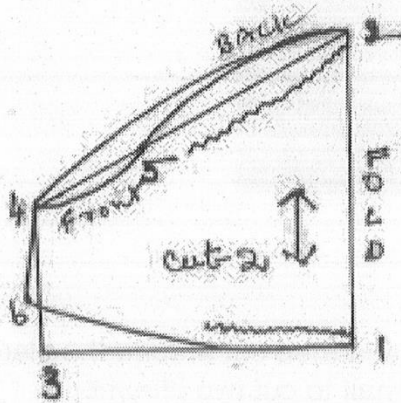


DO YOU KNOW?

Until the 19th century, little children were dressed as miniature adults.

Instruction for drafting:

- 1 to 2 = sleeve length + 6 1/2 cm.
- 1 to 3 = 1/4 chest + 3.75 cm.
- 3 to 4 = half of 1 to 2 minus 0.75 cm (3/4 cm).
- Join 4 and 2 with a straight line.
- 4 to 5 = 1/3 of 4 and 2.



- For front arm hole curve join 4,5 2 as shown in figure.
- For back armhole join 4 to 2 as shown in figure.
- 3 to 6 = 2.5 cm.
- Join the 6 with a slight curve line as shown in figure.
- The wrinkled lines denote area for gathering finish the lower round arm as for the fashion desires.

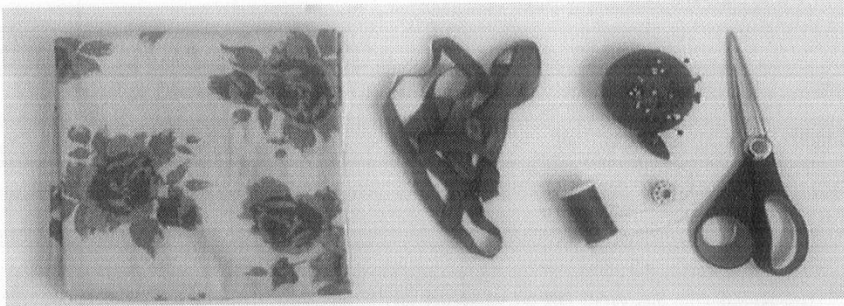
11.2 Drafting Pattern Making for Bloomers

Tools

- Sewing machine.
- Thread.
- Pins or binder clips.
- Scissors.

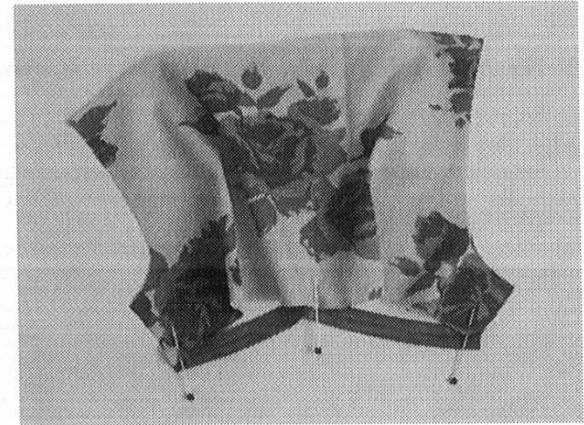
Materials

- 1/2 yard fabric (knit preferred for ultimate comfort; woven or quilting cotton works too).
- 1 yard fold-over elastic.



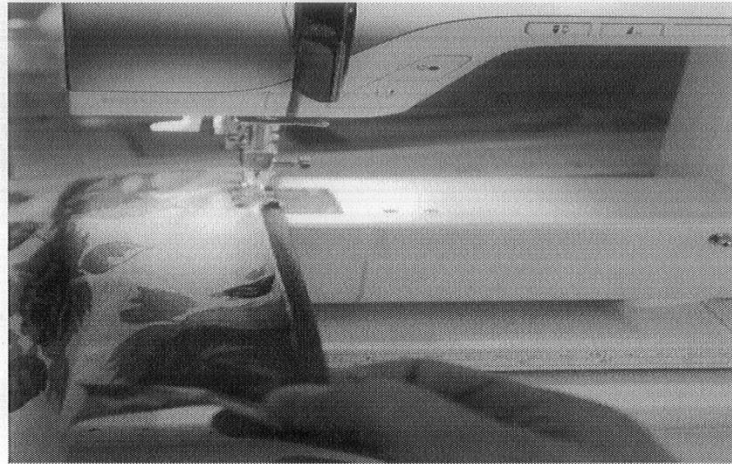
Cut Pattern and Elastic

- Print the paper pattern, piece together with tape as per the instructions, and then cut around the black lines to make the bloomer pattern in your desired size. Fold the fabric in half to cut two bloomer pieces at once.
- You should now have two bloomer pattern pieces. Cut the following for your elastic:
 - Size 0 - 6 months: Cut one 16" x 3/4" piece (waistband) and two 8-1/2" pieces (leg band).
 - Size 6 - 12 months: Cut one 17" x 1/4" piece (waistband) and two 9-1/4" pieces (leg band).



Pin Elastic

- Pin one leg band elastic piece to the bottom of one of the bloomer pieces.
- Pin the upper edge of the fold-over elastic to the bottom edge of the bloomer on the wrong side of fabric.
- Pin the middle of the elastic to the middle of the bottom of the bloomer, and pin the sides of the elastic to the side edges of the bloomer.

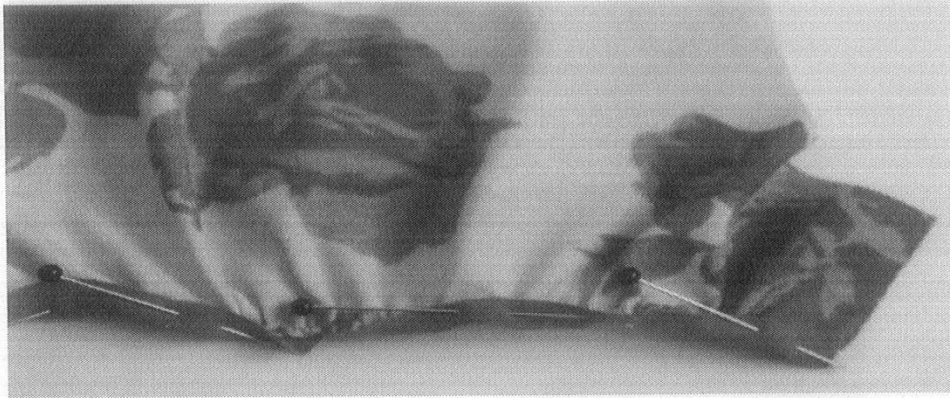


Sew Elastic

- Starting at one edge of the bottom of the bloomer, use a straight stitch to sew the elastic to the fabric.
- Pull the elastic as you sew so that it is the same length as the bloomer. The fabric edge should go to the middle of the elastic.
- Sew until you reach the other end of the bloomer; remove the pins as you sew.

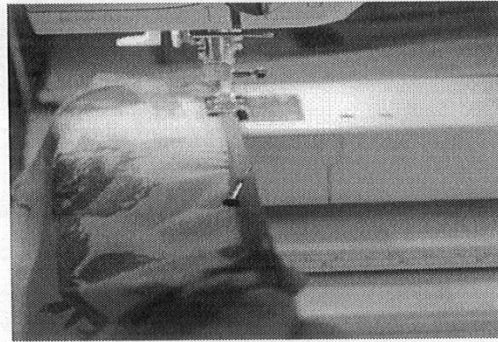


- You should have this when you are finished.



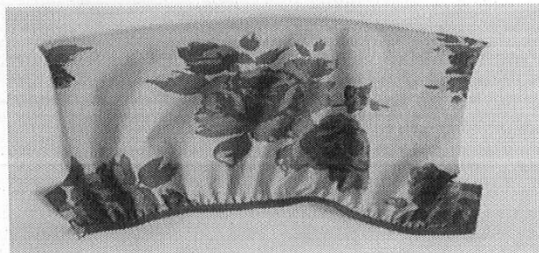
Pin Elastic

- Fold the elastic over to the front to cover up your sewn line. Pin in various places to secure.



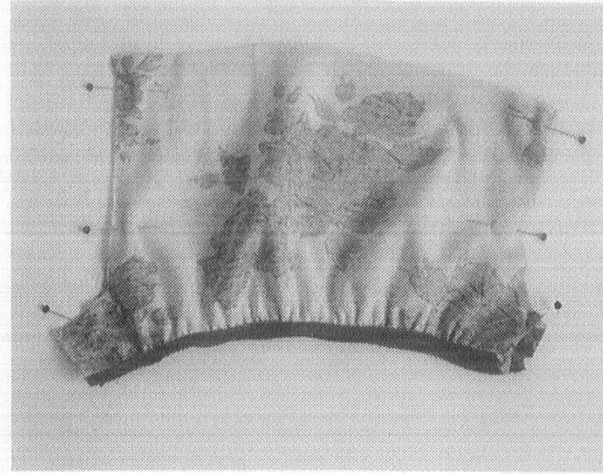
Sew Elastic

- Use a zigzag stitch to secure. Once again, pull the elastic as you sew.

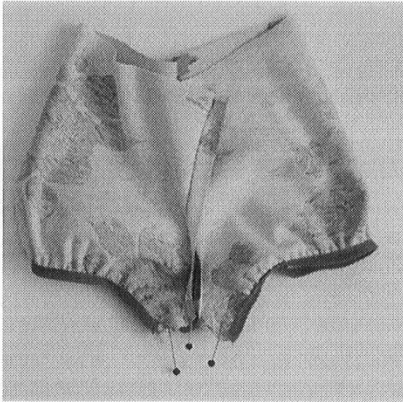


Repeat

- Repeat the process for other bloomer piece and leg band elastic.



Pin Pieces Together



- Place the bloomer pieces right sides together, matching up all side edges.
- Pin the curved front and back seams together, and sew using a 1/2 inch seam allowance.
- Finish seam if desired with an over locking sewing machine, zigzag stitch or pinking shears.

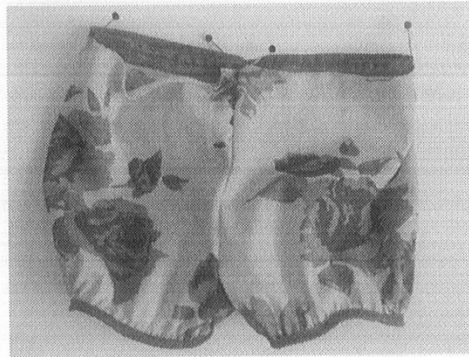
Pin Bottom Together

- Turn the bloomers so that the front and back seams are on the top and bottom, and press.
- Pin the bottom leg seam, still with right sides together and sew using a 1/2 inch seam allowance.
- Finish seam if desired with an over locking sewing machine, zigzag stitch or pinking shears.

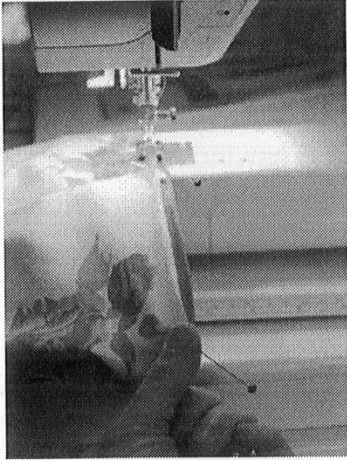


Turn Right Side Out

- Turn right side out and you should now have something like this. All you need to do now is add the waistband.

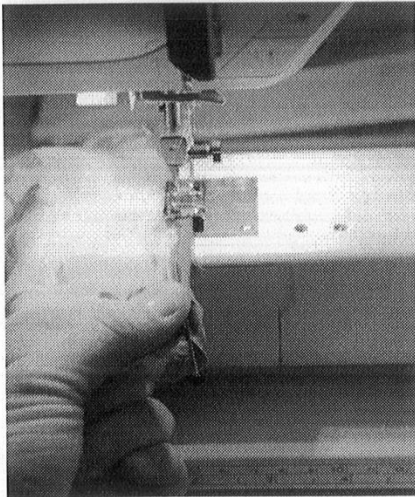


Pin Elastic to Top



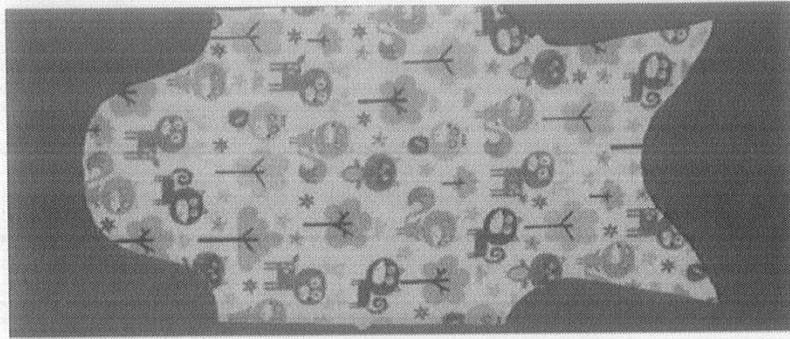
- Overlap the ends of the waistband elastic by 1/2 inch.
- Pin the overlapped ends along the top edge of the back seam on the bloomers, on the wrong side of the fabric.
- Pin the elastic in various places around the top of the bloomers, such as the front seam and sides.

Attach Waistband

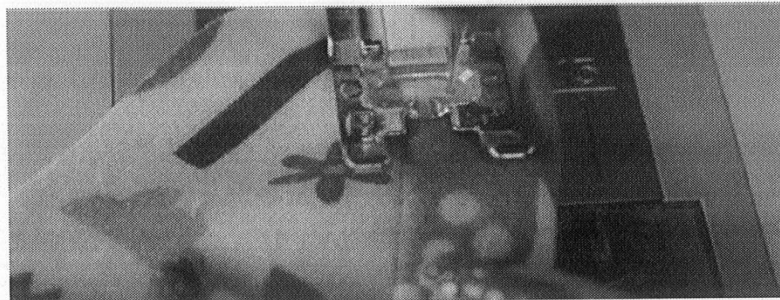


- Attach the waistband in the same manner as you did the leg bands.
- Start at the back of the overlapped elastic; sew with a straight stitch, pulling the elastic as you go so that it is the same length as the bloomers.
- Continue until you make it all the way around the waistband.

- Once the pieces are traced and cut outs are made from the fabric, it will look like the picture given below:

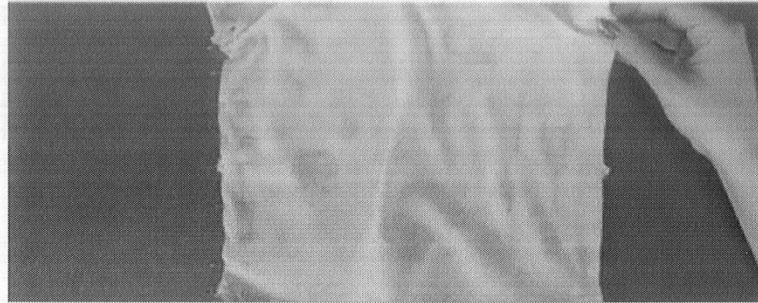


- Once the cut out is made, zippers should be stitched around the neckline and the bottom as well, for the front and back pieces.
- The stitch should be a single layer.

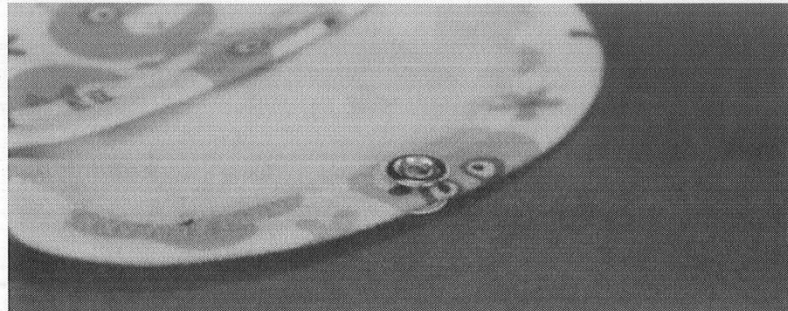


- The strip of fabric that is previously cut out will be lined up with the neckline. The right sides should be stitched together and the raw edges should be lined together.
- The other raw edge of the binding for the neckline should be folded over to the backside. In this way all the seam allowances will be closed. Sew along the line. A zigzag stitch is appropriate for this.
- Put the front and the back in the way given below in the picture. The necklines will be placed together.
- The edges should be matched on the neckline.
- The end of one side should be matched with the square mark.

- The front end will be under the back at the sleeve for both the sides and a stitched (with a basic stitch). This will be the longest stitch.
- The sleeve pieces should be hemmed in the end.
- Match the points of the sleeves with the side of the body of the Baby suit followed with a quarter-inch seam allowance (i.e., $\frac{1}{4}$ of an inch).
- The side seams are to be sewed. It is better to pin the sides before getting them stitched, as given below in the picture. This should start with the underarm sleeve and will be pinned all along till the end.



- Next to this, the snaps are to be sewn. The position of the snaps should be marked before. The binding at the bottom should be done first.
- The snaps should be placed starting with the socket portion.
- The snaps are to be paired with prongs.
- Each prong should be placed under the Baby suit, right under the place that is marked. These are fastened by snap fastening tool.



- This should be done on the front and back sides.