



TRANSFORMING LIVES
Through Skilling

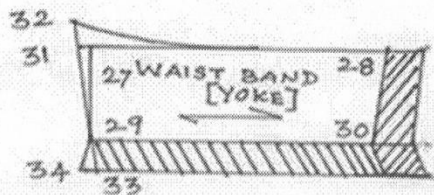
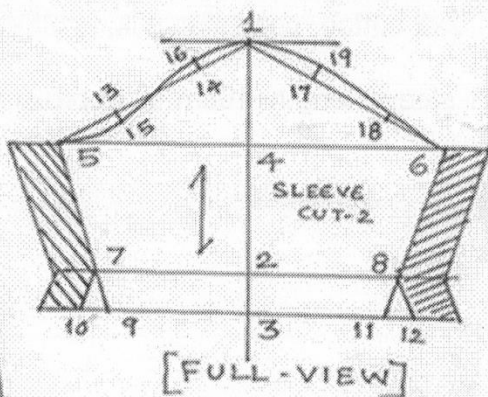
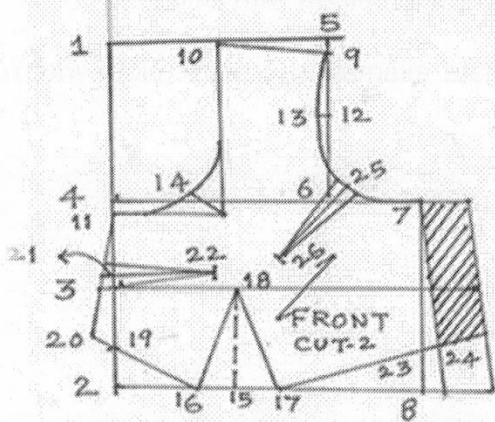
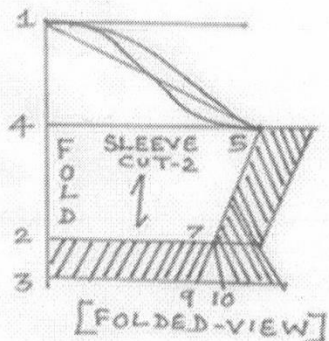
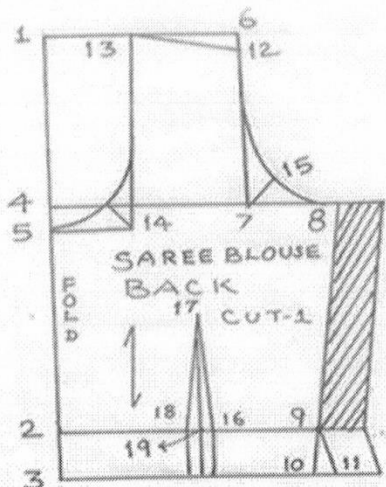
Supporting Partners



CHAPTER - 9

**DRAFTING & PATTERN MAKING FOR WOMEN'S
WEAR**

9.1 How to Draft Sari-Blouse/Tops?



Measurements:

- Back length -36.cm.
- Front length-39cm.
- Shoulder width-36cm.
- Across back width-33 cm.
- Upper breast-88cm.
- Mid bust-92cm.
- Lower breast-81cm.
- Waist-76cm.
- Sleeve length-28 cm.
- Sleeve girth-27cm.

Materials suitable: Cotton, poplin, 2x2 cotton, polyester, silk, synthetic, and chiffon with lining.

Materials required: 2 lengths + 1 sleeve length+10cm or approximate estimation-1metre.(cloth width-92cm)

The pattern parts:

- Back cut-1,
- Front cut-2,
- Waist yoke cut-4,
- Sleeve cut-2,
- Neck bias piece as required, Front placket cut-3 (front hook fastening)

Back part:

- 1-2 = Back length + 1.2 cm.
- 3-2 = Bottom fold 3.5cm.
- 4-1 = Armhole depth, Bust 16.
- 5-4 = Neck Drop 2.5cm.
- 6-1 = $\frac{1}{2}$ shoulder (-) 2.5 cm.
- 7-6 = as per draft.
- 8-4 = $\frac{1}{4}$ th Bust + 1.2 cm.
- 9-2 = $\frac{1}{4}$ th waist + 2.5 cm for dart intake, each 1.2 cm. There should be two darts (to be constructed).
- 10-11 = 1.2 cm
- 12-6 = 1.2 cm as per draft.
- 13-6 = 9cm.
- 14-13 = draw as per draft.
- 15-7 = 4cm, as per draft. 16 is middle of 2 to 9 measure.
- 17-16 = 12 cm dart length.
- 18 to 19 = 2.5cm dart intake. Keep side seam margin 2.5cm extra.

Front part:

- 1-2 = $\frac{1}{3}$ rd Bust + 2.5 cm
- 1-3 = $\frac{1}{4}$ th Bust + 2.5 cm.
- 1-4 = $\frac{1}{6}$ th Bust.
- 1-5 = $\frac{1}{2}$ shoulder (or) $\frac{1}{6}$ th Bust girth.

- 6-5 = as per draft.
- 7-4 = $\frac{1}{4}$ th Bust + 1.2 cm.
- 8-7 = as per draft.
- 9-5 = 1.2 cm.
- 10-5 = 9 cm.
- 11-4 = 2.5 cm 12 is middle of 5 to 6.
- 12-13=1.2 cm.
- 14-10 = 11 as per draft.
- 15-2 = Dart distance is $\frac{1}{12}$ th Bust +1.2 cm.
- 16-15 = 2.5 cm, dart intake.
- 17-15 = 2.5 c m. as per draft.
- 18-15 = 7.5 cm dart length.
- 19-2 = 4 cm.
- 20-19 = 1.2 cm. 21 is midpoint of 19 to 11.
- 22 - 21 = 7.5 cm dart length and intake 1.2 cm.
- 23 - 8 = 4cm
- 24-23 = 1.2 cm.
- 25 – 26 = 9cm dart length and dart intake is 1.2cm. Side seam margin is 4 cm according to the draft.

Waist Band (yoke):

- $27 - 28 = 1/4\text{th waist} + 1.2 \text{ cm.}$
- $29 - 27 = 8 \text{ cm}$
- $29 - 30 = 1/4\text{th waist.}$
- $31 - 27 = 1.2 \text{ cm.}$
- $31 - 32 = 2.5 \text{ cm.}$
- $29 - 33 = 2.5 \text{ cm.}$
- $34 - 33 = 1.2 \text{ cm side seam margin 4cm according to the draft.}$

Sleeve:

- $1 - 2 = \text{Sleeve length} + 1.2 \text{ cm.}$
- $2 - 3, \text{ Bottom Fold } 4 \text{ cm.}$
- $1 - 4 = \text{Bicep depth is } 1/12\text{th Bust} + 2.5 \text{ cm.}$
- $5 - 4 = 1/6\text{th Bust} + 1.2 \text{ cm}$
- $6 - 4 = 1/6\text{th Bust} + 1.2 \text{ cm.}$
- $7 - 2 = 1/2 \text{ sleeve girth}$
- $8 - 2 = 1.2 \text{ cm } 13 \text{ is } 1/3\text{rd of } 1 \text{ to } 5 \text{ measure. } 14 \text{ is } 1/3\text{rd of } 1 \text{ to } 5 \text{ measures.}$
- $13 - 15 = 1.2\text{cm as per draft.}$
- $16 - 14 = 1.2 \text{ cm, as per draft. } 17 \text{ is } 1/3\text{rd of } 6 \text{ to } 1 \text{ distance. } 18 \text{ is } 1/3\text{rd of } 6 \text{ to } 1 \text{ distance.}$
- $19 - 17 = 1.2 \text{ cm as per draft}$

9.2 How to Draft a Skirt?

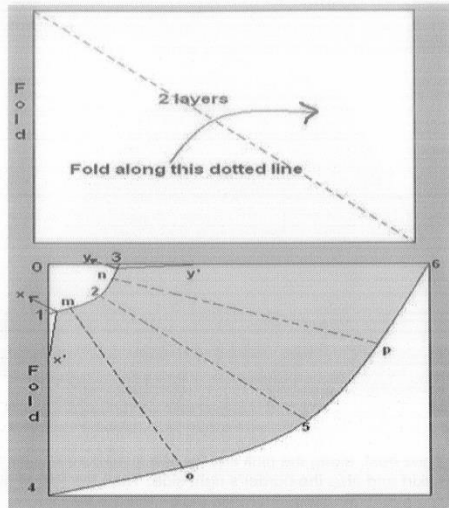
Tools: Measuring tools, cloth, pattern, scissors, inch tape, marking chalk and paper.

Stitching the Skirt

- Take measurements for: waist, seat, skirt length from waistline.
- Materials ideas for skirt: Raw Silk/ Cotton Silk/ Dupion/ Georgette/ Net.
- Materials required: 1 ¼ metres to 2 metres of fabric and 57 cms of elastic.

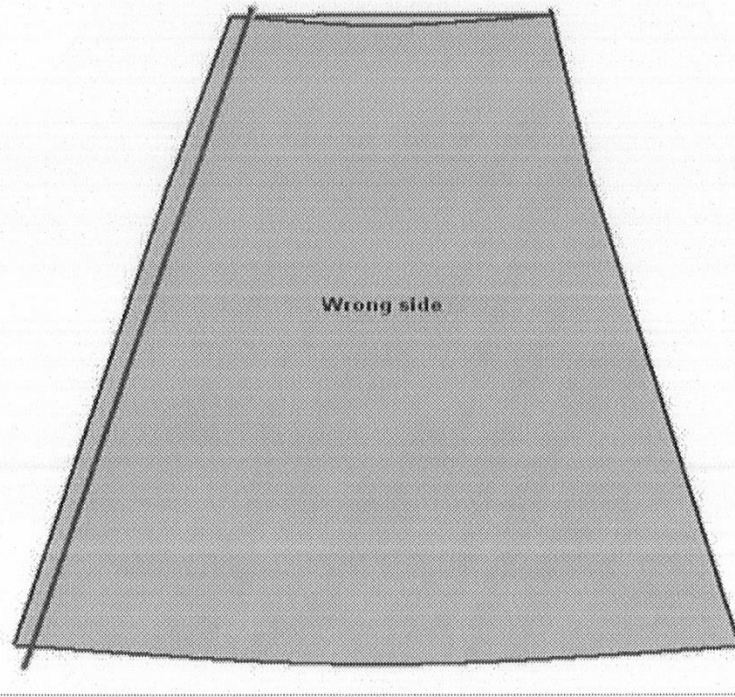
Waist Band:

- The curve's x-y (as marked in the picture) should be measured with required measurements for the waist.
- **Border:** measurement along the hem line to be taken.
- **Cutting line:** 1-x-m-2-n-y'-6-p-5-o-4-x'-x
- The seam allowance must be made according to measure for all the sides excluding the hemline. The seam allowance for the hemline is required.

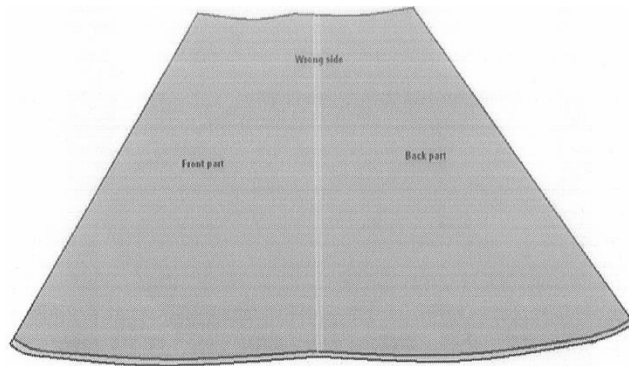


Sewing the Skirt:

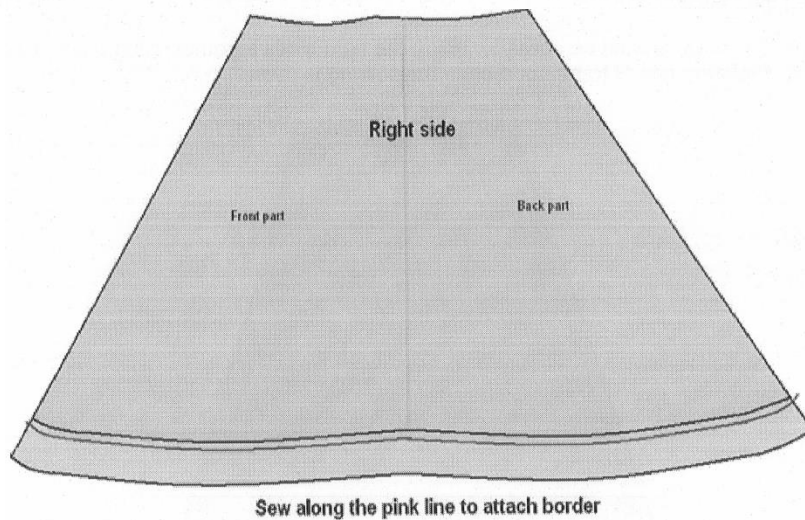
- Any one of the seam should be sewn by facing the right sides together using a given seam allowance. Pressing needs to be done once the sewing is over.

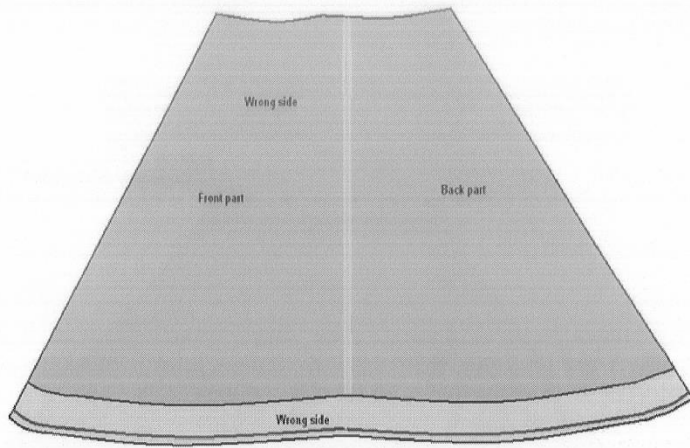


- A fold should be made on the hemline (inside). This should be pressed and then another fold of same length needs to be made inside and pressed again (i.e. double folding). The sewing should be made along the pink line, as given in the picture below.



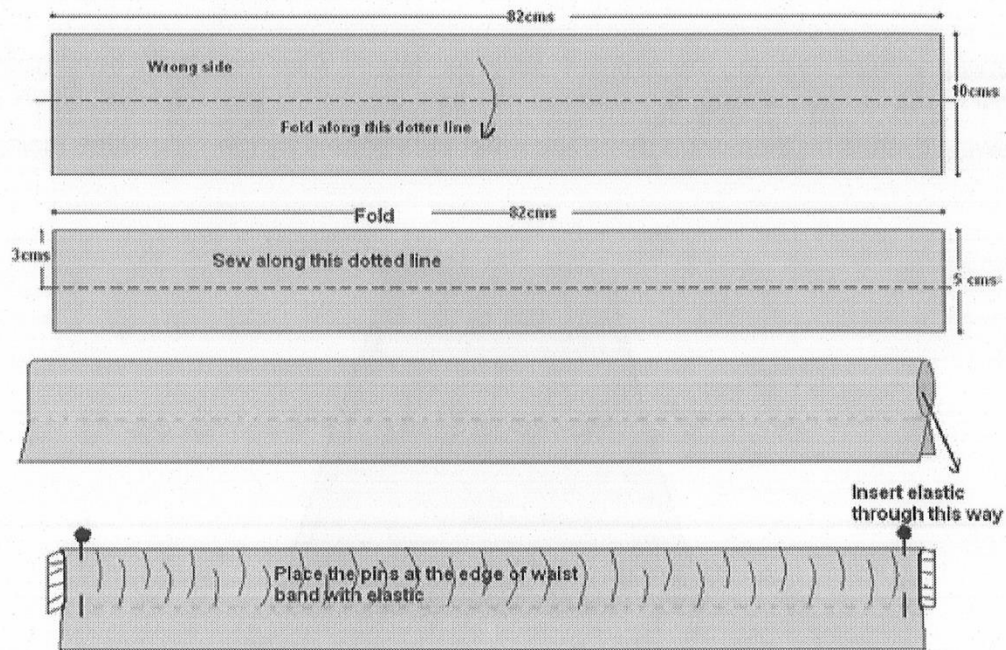
- Sewing needs to be done next, along the pink line for attaching border. This is to be done by facing the wrong side of the skirt and also the border's right side. Then the fold should be made towards the skirt's right side and a fold of 1 cm to be made inside the border.



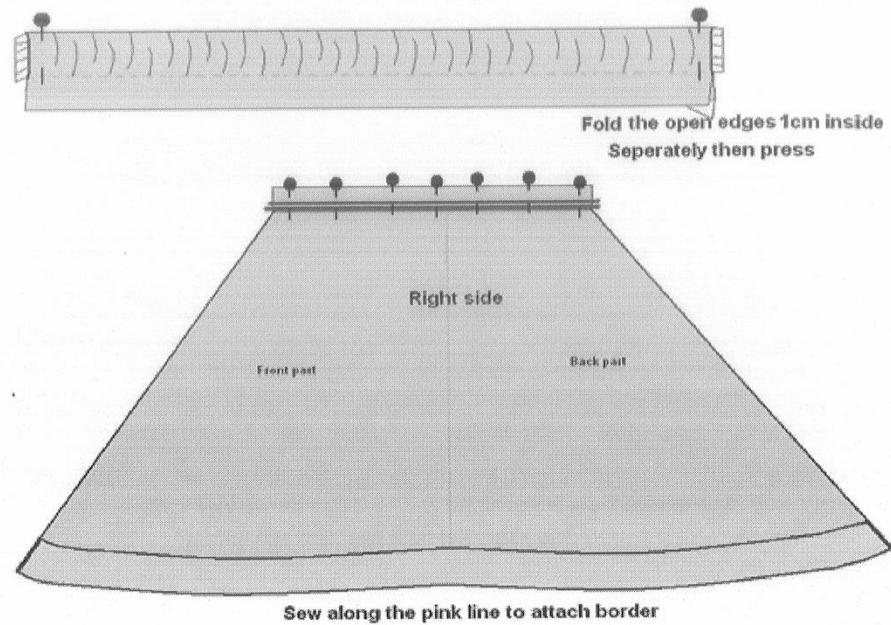


Sew along the pink line to attach border

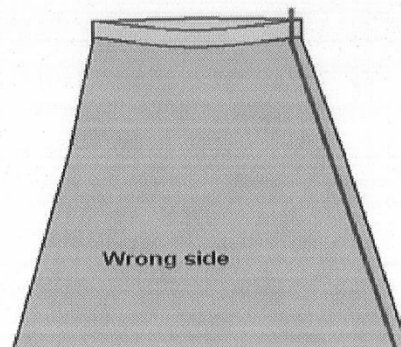
- The waist band needs to be made next.



- The 'skirt' is now to be inserted between the two folded open edges of the waist band and then this requires to be pinned.



- The sewing should be along the pink line, as given above. Also the elastic band needs to be adjusted at the time of sewing. It is good to use pins since they give a perfect finish.
- The sewing should be then done along the other side seams by the right sides facing together.



9.3 How to Draft a Salwar Kameez (Kameez)?

Tools: Measuring tools, cloth, pattern, scissors, inch tape, marking chalk and paper.

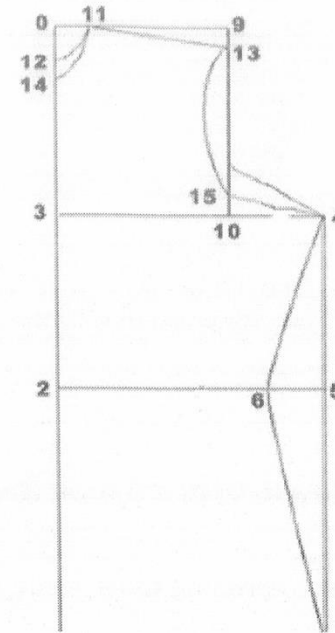
Measurement required for sewing:

- **Full Length:** From shoulder to the desire length.
- **Chest:** Around the chest.
- **Waist length:** From shoulder to waist.
- **Shoulder:** End to end.
- **Length of sleeve:** From the shoulder to the desire arm/ hand's length.
- **Slit:** From the waist to the salwar's bottom.
- **Neck length (deep):** Front and back measurements are to be taken separately.
- **Shoulder to chest measurement.**
- **Chest to waist measurement.**
- **Waist to bottom measurement.**

Drafting the Kameez:

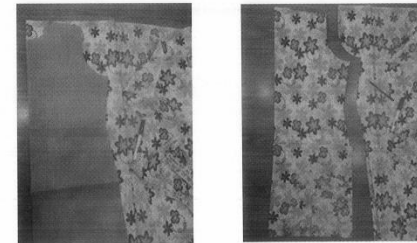
- 0-1: Full Length -2 cm
- 0-2: Waist Length
- 0-3: $\frac{1}{4}$ Chest
- 3-4: $\frac{1}{4}$ Chest + 4 cm
- 3-4: 2-5
- 5-6: 1.3 cm for side shape
- 1-7: $\frac{1}{4}$ Chest + 12 cm

- 7-8: 1.3 cm
- 0-9: $\frac{1}{2}$ Shoulder Width + 0.8 cm
- 0-9: 3-10
- 0-11: $\frac{1}{6}$ Neck or $\frac{1}{12}$ Chest
- 0-12: 2.5 cm
- 9-13: 1.3 cm
- 0-14: $\frac{1}{6}$ Neck or $\frac{1}{12}$ Chest
- 10-15: 2.5 cm Front Arm



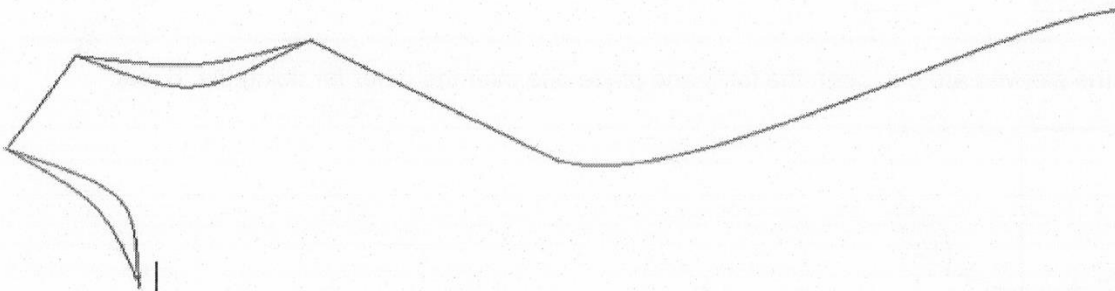
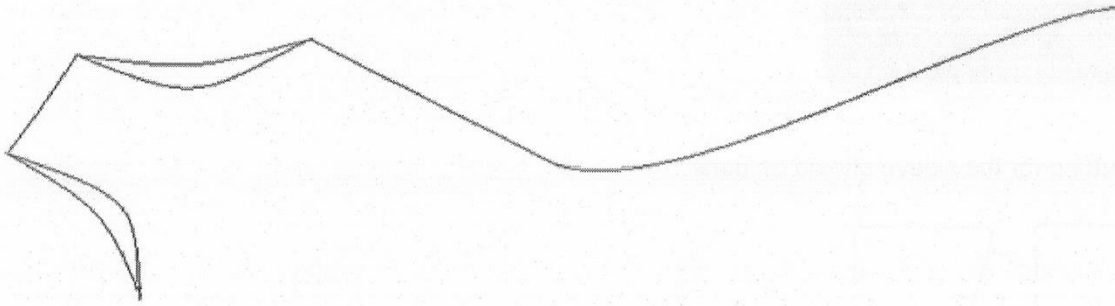
Tracing the Salwar Kameez measurement over the material

- Drafting and measurement is needed at the time of designing the Salwar Kameez with measurement. In other situation, the sample salwar can be folded and placed over the material of the cloth for stitching. The Fold is of importance and should never be left out (the Salwar Kameez material's Fold and the sample Salwar Kameez's fold should be on the same line).



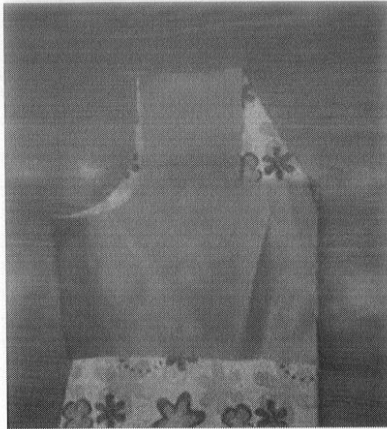
Once the draft is completed, the pattern should be cut. (The outline cut should be completed as well. The neck deep and sleeve need to be cut separately.

BACK BODY

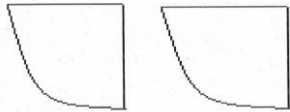


FRONT BODY – AFTER THE ARMHOLE AND NECKLINE DEEP CUT COVER

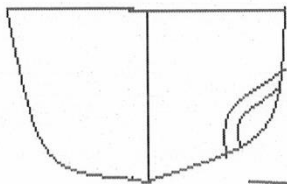
Instructions for drafting sleeve:



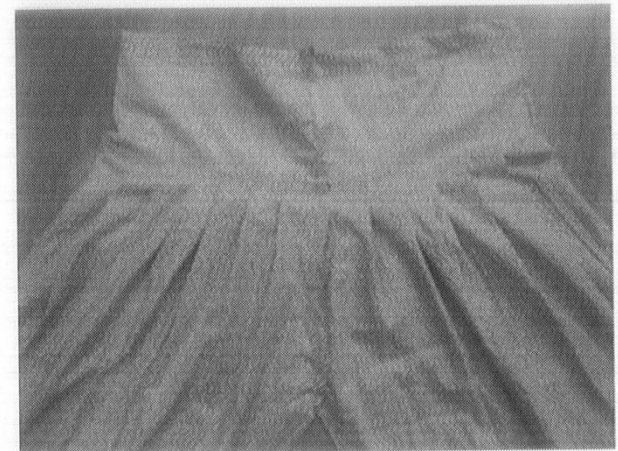
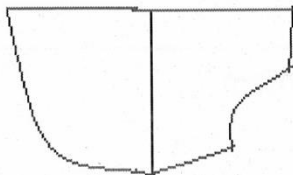
- The cutting for the sleeve should be done.



- Once the sleeves are cut, open the folds and place one over the other for doing the 'S' cut.



Sleeves placed over one another for 's' cut.



9.5 How to Draft a Kurti?

Tools: Measuring tools, cloth, pattern, scissors, inch tape, marking chalk and paper.

Measurements:

- Full length 30" N.
- W length 16 ½" Shoulder
- Width 14"
- Mid Bust 36".
- Waist 30".
- Hip neck 15"
- Long sleeve length 23" girth 11"

Pattern Parts Required: Front cut 1 on fold, back cut 1 on fold, sleeve cut 2.

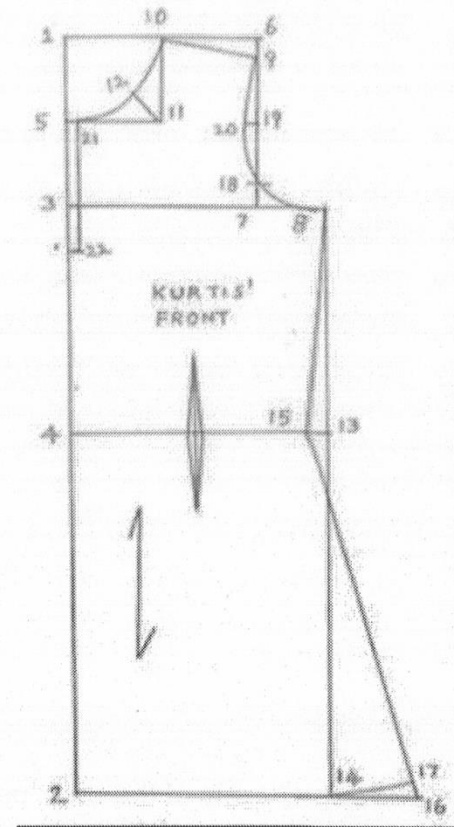
Material suggested: Cotton, poplin, silk, crape, synthetic, chiffon crape and satin.

Material Required:

- 2.50 metre
- Cloth width 42"

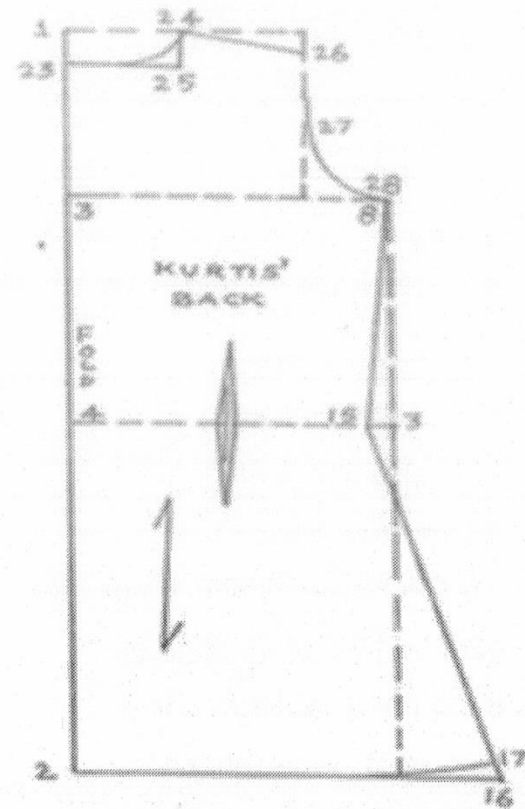
Drafting Details of Front Part:

- 1-2= Full length + 1 ¼"
- 1-3= Arm depth, 1/6th Bust +1"
- 1-4= N.W. length + ½"
- 5 is the midpoint of 3 to 1measure. Front neck shape should drawn
- 6-1= ½ shoulder width + ½"
- 7-6= Draw a line.
- 8-3= 1/4th Bust +1"
- 9-6= shoulder's slope ¾"
- 10-1= 1/6th Bust +1"
- 11-10= Same as 5 to 1 measure
- 12-11= 1 ½" at 45 degrees
- 8-13-14= 1 ½" Draw a line
- 15-13= ¾" Waist shape
- 16-2= 1/3rd Hip +1 ½"
- 17-16=3/4" Bottom shape
- 18-7= 1" as per draft
- 19 is the mid-point of 6 to 7
- 19-20= ½" inward arm hole curve to be draw
- Waist middle dart to the drawn, 8"x ¾"
- Neck open front 5 ½" (21 to 22)



Drafting Details of Back Part:

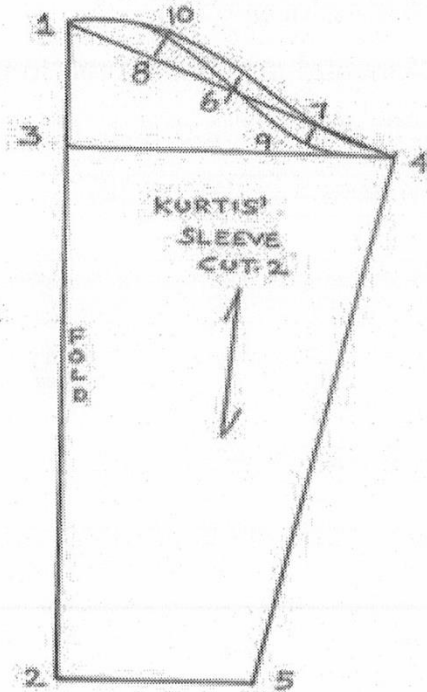
- Once the front part is but, another paper piece should be taken for sketching the back part.
- $23-1 = 1\frac{1}{2}$ " back neck drop.
- $24-1 =$ Same as front 1 to 10 measure.
- $25-24 = 1\frac{1}{2}$ " as per draft, to construct the back neck shape.
- $26-27-28 =$ armhole curve, which should be drawn away from the front arm curve portion.
- Back waist dart $8" \times \frac{3}{4}"$ middle of 4 to 15 as per draft.



The above picture is of the back part of the Kurti.

Drafting Details of Sleeve Part:

- 1 to 2=sleeve length+1".
- 1 to 3= $\frac{1}{8}$ th bust- $\frac{3}{4}$ ".
- 3 to 4= $\frac{1}{4}$ bust- $\frac{3}{4}$ ".
- 2 to 5= $\frac{1}{6}$ th bust- $\frac{1}{2}$ ".
- 6 is the middle of 1 to 4 measure.
- 7 is $\frac{1}{2}$ of the 6 to 4 measure.
- 8 is the middle of 6 to 1 measure.
- 9 -7= $\frac{3}{4}$ " shape according to draft.
- 8-10= $\frac{3}{4}$ upward shape according to draft.
- 1-10-7-4=back armhole shape.
- 4-6-1=front armhole shape according to the draft.



9.6 How to Draft a Nightgown?

Tools: Measuring tools, cloth, pattern, scissors, inch tape, marking chalk and paper.

Measurements:

- Full length 117cm.
- Natural waist length 39cm shoulder width 36cm.
- Bust 91cm sleeve length 23cm.

Pattern parts: Front, back, sleeves.

Materials Suitable: Poplin, cotton, synthetic, polyester, silk, satin, voile, crape.

Materials Required: (Fabric) 3.50 metre (Fabric width 44" to 48")

Drafting details of front part:

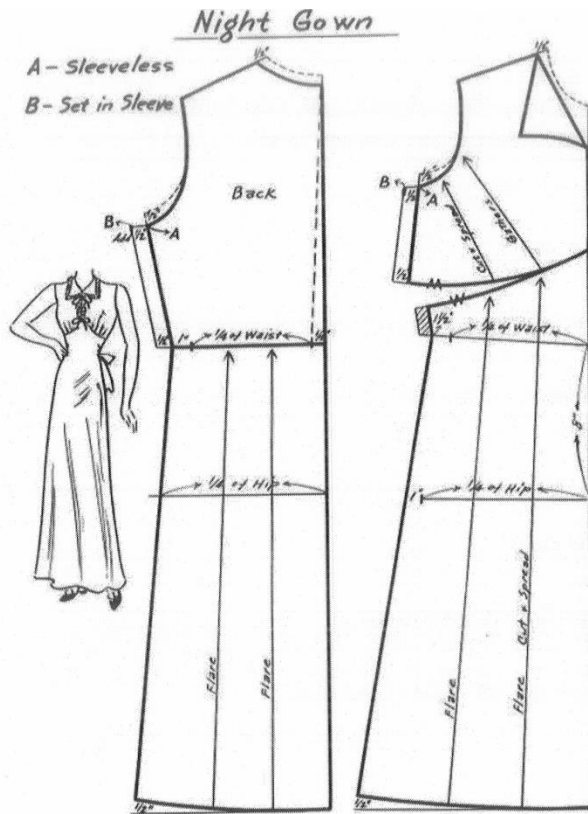
- 1 -0=118cm Full length +1cm.
- -0= N.W. Length+ 1cm.
- -0= 1/4th Bust (-) 2.5cm.
- -3= 1/4th Bust + 5cm.
- -2= 4 to 3 Measure (-) 2cm.
- -1 = 4 to 3 Measure +8cm.
- -6= 1.5cm Upward.
- -0= 1/2 shoulder+1.2cm.
- 8-9= Square down as per draft.
- -8= Shoulder drop 2.5cm.
- -A= 2.5cm Shape the front armhole from 10-A-4.
- -0= 1/12 Bust.
- -0= 1/12Bust+1.5cm as per desired shape of neck style.
- Line B-C = 2.5cm away from 1 to 0 of Button line front facing width is 6cm.

Back part

- 13 -0= 2.5cm back neck down as per draft.
- 14 -0= 1/12th Bust + 1cm.
- 15 -14= 2cm Upward.
- 16-10= 2cm upward shape back arm whole join 13-15- 16-4.
- 7 -D= side vent 1/3rd or the length from 5 to 7. 4cm per bottom folding.

Sleeves parts

- 1 -0= Sleeve length +1.5cm
- -0= 1/8th Bust (-) 1cm.
- -2= 1/4th Bust Measure.
- -1= 2 to 0 Measure (-) 2.5cm.
- A is the centre of 3and 0.
- B -A= 2cm up join 3-B-0 and 3-0 as shown [Back and front armhole].



9.7 How to Draft a Housecoat?

Tools: Measuring tools, cloth, pattern, scissors, inch tape, marking chalk and paper.

Measurements:

Measurement in Centimeter (cm)

- Back length 66,
- Natural waist length 40,
- Full shoulder 38,
- Bust 92,
- Waist 82,
- Seat 97,
- Sleeve length 24,
- Sleeve cuff 38.

Drafting Details of Lady's House Coat

Back part:

- 1-0 = 67 Back length+1.
- 2-0 = $23 \frac{1}{4}$ bust.
- 3-0 = 40 Natural waist length.
- 4-1 = 2 Inside.
- 5 = $11 \frac{1}{2}$ centre of 0 to 2. Join 4 and 5.
- 6-0 = $2 \frac{1}{2}$ down.

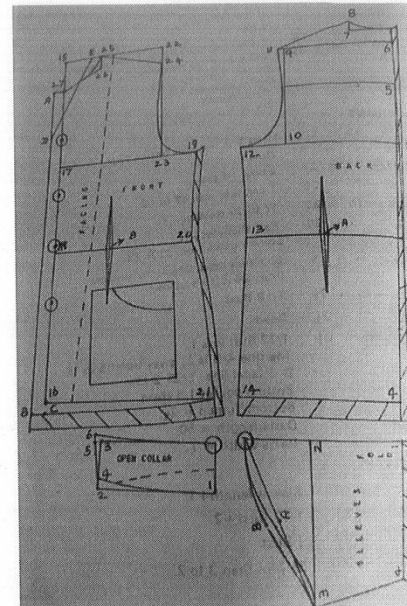
- 7-0 = 7 ½ bust.
- 8-7 =2 up.
- 10-2 =19 ¼ bust less cm. square down from 9 to 10.
- 11-9 =1 outside. Join 8 and 11.

Back shoulder

- 12-2 =27 ¼ bust +4 cm.
- 13-3 = 26 1 cm. less than 12 to 2 measurements.
- 14-4 = 26 same as 13-3 measurements.
- A- = Bottom turn up + 2 ½.
- Centre of 3 and 13.
- Darts length=20.
- Darts with = 1 cm.

Front part:

- 16-15 =67 10 to 1 in the back (centre line).
- 16-c =2 down.
- 17-19 =27 ¼ bust + 4 cm.
- 18-20 =26 1 cm. less than 17 to 19.
- 21-16 =30 17 to 19 measure +3.
- 22-15 = half skoulder+1.
- Square down from 22 to 23.
- 24-22 = shoulder drop. Shape the armhole
- From 24 to 19 as shown.
- 25-15= 7 ½ 1/12 bust.
- 26-22 = 2 ½ down.
- 27-15 = 6 ½ 1 /12 bust less 1.



- The line A-B is 2 .5cm away from 15 to 16.
- D-E lapel line, E- 25. 2 cm.
- Bottom turn up =2 .5cm
- Darts length = 50.cm.
- Darts width = 1.2cm

Sleeve part:

- 1-0 = 25cm. Sleeve length+1 cm.
- 2-0 =9 .5cm($1/12$ bust+2 cm)
- 3-2 =23 cm($1/4$ bust.)
- 4-1 = 20 .5cm.2 .5cm. less than 3 to 2.
- A = center of 3 and 0.measure.
- A-B =2 cm up. Shape the back and front armhole as shown.

Open collar:

- 0-1 = 7 .5cm collar width.
- 2-1 = Half coat neck measurements + seam.
- 3-2 =7 .5cmcollar width.
- 4-2 =1.5cm up.
- 5-3 = 1 .5cmout side.
- 6-5 = 1.2cm up. Join 4 to 5 and shape