



LEARN & EARN PROGRAM

Supporting Partner

naik
CHARITABLE TRUST

LARSEN & TOUBRO
Public Charitable Trust



“ Skill building can transform individuals, society, industry...
and ultimately contribute to building the nation. ”

- A M Naik

Padma Vibhushan Awarded And Philanthropist



ABOUT JANSHAKTI

Jansakhi is a women empowerment initiative by the Larsen & Toubro Public Charitable Trust and the Naik Charitable Trust, implemented at the Anil Naik Technical Training Centre (ANTTC). The program focuses on empowering women in Kharel Village and surrounding rural communities by equipping them with the skills and opportunities needed to lead independent, dignified lives.

The program follows a “Learn and Earn” model. Women enrolled in the Apparel trade undergo 4 months of structured classroom training at ANTTC, followed by 2 months of On-the-Job Training (OJT) under the Jansakhi program. During OJT, trainees gain hands-on experience in real-time production environments, enabling them to earn while they learn. This approach bridges the gap between education and employment, enhancing technical skills and building confidence. Alongside training, Jansakhi also offers business mentorship, income-generating opportunities, and community empowerment support.

By combining practical training with livelihood support, Jansakhi lays the foundation for economic self-reliance, entrepreneurship, and sustainable rural development.

LARSEN & TOUBRO PUBLIC CHARITABLE TRUST



A M NAIK
Padma Vibhushan
Awardee & Philanthropist



LARSEN & TOUBRO
Public Charitable Trust

Over the last eight decades, Larsen & Toubro has metamorphosed from its humble beginnings in a single-room office into a globally respected conglomerate, with operations in over 30 countries.

The Naik Charitable Trust aims to fill this critical gap through multiple initiatives of the Anil Naik Technical Training Centre. The Centre is a brainchild of Mr. A. M. Naik whose commitment to promoting skill training is known across the industry and who has been appointed Chairman of the National Skill Development Corporation (NSDC) by the Government of India.

During this journey, our Group Chairman, Mr. A. M. Naik established Larsen & Toubro Public Charitable Trust (LTPCT) with a focus on instilling philanthropic values at all levels of the organisation. He encouraged employees to give back to society and used the vehicle of ESOPs as the medium of contribution. The Company matches employee contributions with an equivalent grant.

Since its inception in 2004, the Trust has touched the lives of lakhs of underprivileged children, women and youth in seven states where LTPCT operates, in partnership with esteemed NGOs with the objective of reducing duplication of effort, enhancing scalability and implementing the learnings to multiply impact.

ANIL NAIK TECHNICAL TRAINING CENTRE



Anil Naik Technical Training Centre (ANTTC) was established in 2006 in Kharel, Navsari, as a vocational training center aimed at providing skill development opportunities to school dropouts from villages across South Gujarat.

Since its inception, over 7,468 students including 2,140 girls have graduated from various programs. A significant number of these graduates have secured gainful employment, and the center boasts a placement rate of over 78%.

ANTTC is affiliated with the National Skill Development Corporation (NSDC) and is widely regarded as a Centre of Excellence.

The center offers a variety of courses to train individuals as electricians, welders, auto mechanics, Fitters, solar panel technicians, office assistants, self-employed tailors, sewing machine operators, and beauticians.

With the support of LTPCT envisions transforming part of the ANTTC infrastructure into a textile production hub, providing sustainable employment opportunities to women from nearby villages.

PROJECT GLIMPSE



PROJECT GLIMPSE





BROWSE CATALOG >



HOME



CUSHION COVERS



SKU - HL CC01BW

Size: 16 cm x 16 cm

Mangalgiri Off white cushion cover, handcrafted with bagru patch and Blanket, Star and Kantha Stitch.

Price:



SKU - HL CC02NB

Size: 16 cm x 16 cm

Mangalgiri navy blue cushion cover, handcrafted with Kantha and tassel Stitch.

Price:



SKU - HL CC01IW

Size: 16 cm x 16 cm

Mangalgiri Off white cushion cover, handcrafted with bagru patch and Blanket, Star and Kantha Stitch.

Price:



SKU - HL CC09

Size: 16 cm x 16 cm

Mangalgiri Ivory cushion cover, handcrafted with feather and Mirror Stitch.

Price:



SKU - HL CC10

Size: 16 cm x 16 cm

Mangalgiri Safron cushion cover, handcrafted with kantha running stitch.

Price: 450/-



SKU - HL CC04

Size: 16 cm x 16 cm

Grey casement cushion cover, handcrafted with Japanese shashiko stitch.

Price: 250/-



CUSHION COVERS



SKU - HL CC03

Price:

Size: 16 cm x 16 cm

Black casement cushion cover, handcrafted with Japanese shashiko stitch



SKU - HL CC02

Price:

Size: 16 cm x 16 cm

Black casement cushion cover, handcrafted with Japanese shashiko stitch



SKU - HL CC01

Price:

Size: 16 cm x 16 cm

Indigo casement cushion cover, handcrafted with Japanese shashiko stitch



SKU - HL CC05

Price:

Size: 16 cm x 16 cm

Black casement cushion cover, handcrafted with Japanese shashiko stitch



SKU - HL CC06

Price: 300/-

Size: 16 cm x 16 cm

Mangalgiri ivory cushion cover, handcrafted with Japanese shashiko stitch



SKU - HL CC07

Price: 250/-

Size: 16 cm x 16 cm

Mangalgiri ivory cushion cover, handcrafted with Japanese shashiko stitch



CUSHION COVERS



SKU - HL CC08

Size: 16 cm x 16 cm

Mangalgiri ivory cushion cover, handcrafted with Japanese shashiko stitch

Price:



SKU - HL CC04.1

Size: 16 cm x 16 cm

Grey Mangalgiri cushion cover, handcrafted with Japanese shashiko stitch

Price:



SKU - HL CC03G

Size: 16 cm x 16 cm

Mangalgiri Grass Green cushion cover, handcrafted with Kantha, Star and Mirror Stitch.

Price:



SKU - HL CC04M

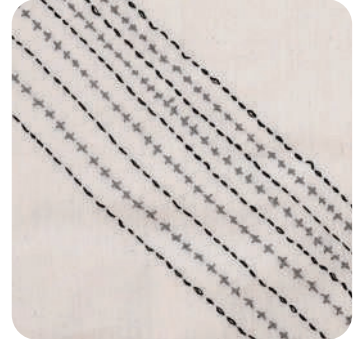
Size: 16 cm x 16 cm

Mangalgiri Magenta cushion cover, handcrafted with Cross and Kantha Stitch.

Price:



TABLE MATS & RUNNERS



SKU - TLC TM01B

Price

Size: 14 in x 20 in

Off white mangalgiri cotton table mat, handcrafted with sashiko japanese embroidery.

SKU - TLC TR02B Size: 14 in x 70 in **Price**

Off white mangalgiri cotton table runner, handcrafted with sashiko japanese embroidery.



SKU - TLC TM01S

Price

Size: 14 in x 20 in

Beige Bagru hand block print cotton and jute table mat, handcrafted with blanket Stitch.

SKU - TLC TM01M

Price

Size: 14 in x 20 in

Mustard yellow mangalgiri cotton and jute table mat, handcrafted with Herringbone and Batiya Stitch.



SKU - TLC TR02S Size: 14 in x 70 in **Price:**

Beige Bagru hand block print cotton and jute table runner, handcrafted with blanket Stitch

SKU - TLC TR02M

Price:

Size: 14 in x 70 in

Mustard yellow mangalgiri cotton and jute table runner, handcrafted with Herringbone and Batiya Stitch.



B A G S



TOTE BAGS



SKU - B-17 12" x 14" x 5.5"

Off white casement tote bag with Bee hand embroidery in running stitch

Price:



SKU - B-14 12" x 14" x 5.5"

Dodger Blue casement tote bag, hand crafted in running stitch

Price:



SKU - B-2 12" x 14" x 5.5"

Madder casement tote bag, hand crafted in shashiko stitch

Price: t



SKU - B-21 12"x 14" x 5.5"

Grey casement tote bag, hand crafted in shashiko stitch

Price:

TOTE BAGS



SKU - B-1 Grey Indigo casement tote bag, hand crafted in shashiko stitch with Patch
Price:



SKU - B-23 12" x 14" x 5.5"
Indigo casement tote bag, hand crafted in lazy dazy stitch
Price:



SKU - B-17.1 12" x 14" x 5.5"
Grey casement tote bag with Bee hand embriodery in running stitch
Price:



SKU - B-11 12" x 14" x 5.5"
Black casement tote bag, hand crafted in shashiko stitch with Patch
Price:

TOTE BAGS



SKU - B-7 12" x 14" x 5.5"

Beige casement tote bag, hand crafted in Running stitch

Price:



SKU - B-24 12" x 14" x 5.5"

Off white casement tote bag, hand crafted in lazy dazy stitch

Price:



SKU - B-8 12" x 14" x 5.5"

Pacific Blue casement tote bag, hand crafted in shashiko stitch

Price:



SKU - B-4 12" x 14" x 5.5"

Madder casement tote bag, hand crafted in shashiko stitch

Price:

TOTE BAGS



SKU - B-15 12" x 14" x 5.5"

Indigo casement tote bag, handcrafted in shashiko stitch

Price:



SKU - B-18 12" x 14" x 5.5"

Beige casement tote bag, handcrafted in shashiko stitch

Price:



SKU - B-10 12" x 14" x 5.5"

Black casement tote bag, handcrafted in shashiko stitch

Price:



SKU - SILI01 12" x 14" x 5.5"

Beige canvas casement tote bag, handcrafted in shashiko stitch with Patch

Price:

TOTE BAGS



SKU - SILI02 Grey Wool Fabric casement tote bag, hand crafted on shashiko stitch with patch

Price:



SKU - B22 D – 11.5" x H - 8.5" Pot
Off white casement tote bag, hand crafted in shashiko stitch

Price:



SKU - SILI03 16.5" x 13.5" x 7"
Off white canvas tote bag, hand crafted in shashiko stitch

Price:



SKU - SILI04 25" x 16.5" x 5.5"
Grey Handloom Tote Bag, handcrafted in shashiko stitch with patch

Price:

TOTE BAGS



SKU -SILI05 24" x 24"
Off white Handloom Tote bag, Hand crafted
in satin stitch

Price:



SKU - SILI06 15" x 14" x 10.5"
Ivory White Casement tote bag, Handcrafted
in chain stitch

Price:



SKU - SILI07 13.5" x 12.5" x 10"
Balck denim tote bag, handcrafted in
shashiko stitch

Price:



SKU - SILI08 13" x 14" x 9.5"
Madder velvety denim tote bag, handcrafted
in shashiko stitch

Price:

TOTE BAGS



SKU - SILI09 18" x 16" x 4.5"

Black Canvas tote bag handcrafted in shashiko stitch

Price:



SKU - SILI10 20" x 14.5" x 4.5"

Blue denim tote bag handcrafted in shashiko stitch and patch

Price:



SKU - B-12 12" x 9.5" x 4" x Base L 8.5"

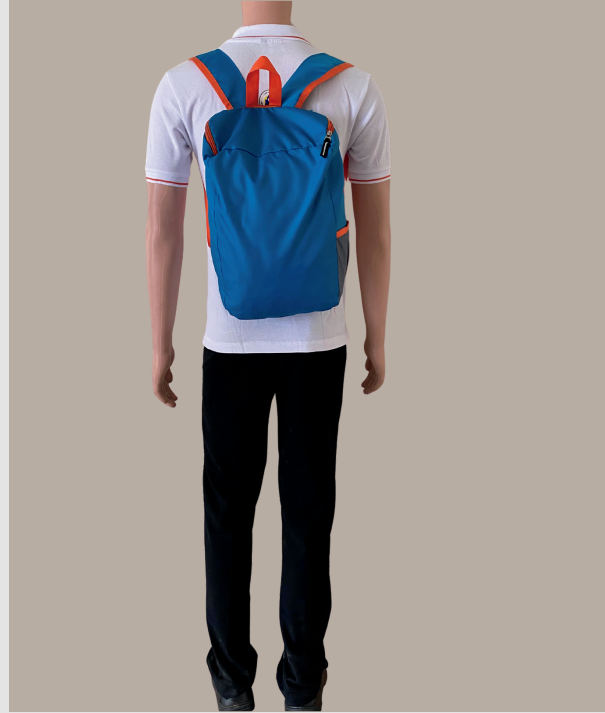
Dodger Blue casement tote bag, hand crafted in shashiko stitch

Price:

ANTTC Inhouse products



TB-001
ANTTC Trainee Bag



TB-002
School Bag



OFF 001
Office Wear



OFF 002
ANTTC T-shirt



SJM 001
Safety Jacket Model 1



SSJM 002
Safety Jacket Model 2



SJM 003
Safety Jacket Model 3



SJM 004
Safety Jacket Model 4



TRANSFORMING LIVES
Through Skilling



Anil Naik Technical Training Centre, Navsari, Gujarat, India

Phone: +91 8849126699 / 02634 246109

Email: info@amnaik-skillbuilding.org

Supported By

naik
CHARITABLE TRUST

LARSEN & TOUBRO
Public Charitable Trust