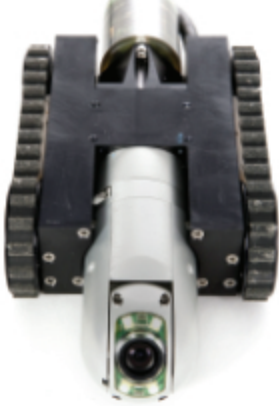


# The Evolution of Pipe Inspection

Inuktun technology lets you... see it for yourself.



**INUKTUN**  
CRAFTSMANSHIP IN HIGH TECHNOLOGY

**see it** for yourself.

The NanoMag's magnetic design allows it to travel vertically, horizontally and even upside down on metal surfaces. The system is extremely effective in areas too small or hazardous for human inspection ... see it for yourself.

## APPLICATIONS

- Elevator shaft inspection
- Reactor head inspection
- Pressure vessel inspection
- Tank inspection
- Pipe inspection
- Corrosion evaluation
- Steel surface inspection

## BENEFITS

- High quality images
- Miniature size
- Light weight
- Strong magnetic pull to hold vehicle securely
- Operates horizontally and vertically
- Precise steering controls

For more information on advanced pipe inspection systems, contact Inuktun today.

CALL 1 877 468 5886

E-MAIL [sales@inuktun.com](mailto:sales@inuktun.com)

ONLINE [www.inuktun.com](http://www.inuktun.com)



Printed in Canada

\* Specifications subject to change

**NANOMAG**

## Vehicle

**Speed** 0-5' +/- 0-1.5m + per minute (optional higher speed available)

**Transporter** Inuktun Nano Trac units

**Tether Cable** 100'/30m

**Weight** 5lbs/2.27kg

**Size** 4.15"W x 7.6" L x 1.9"H (105mm x 193mm x 49mm)

## Camera

### FRONT CAMERA

**Type** Spectrum 45™

**Pick-up-element** color ¼" CMOS

**Resolution** 420 TV Lines

**Focus** Manual (remote)

**Iris** Auto

**Sensitivity** 1.0 lux

**Lights** 4 High intensity LEDs

### REAR CAMERA

**Type** Crystal Cam®

**Pick-up-element** color ¼" CCD

**Resolution** 400 TV Lines

**Iris** Auto-Electronic

**Sensitivity** 1.0 lux

**Lights** 12 High intensity Lights

## Operating Environment

**Temperature** 0°-50°C (32°-122°F)

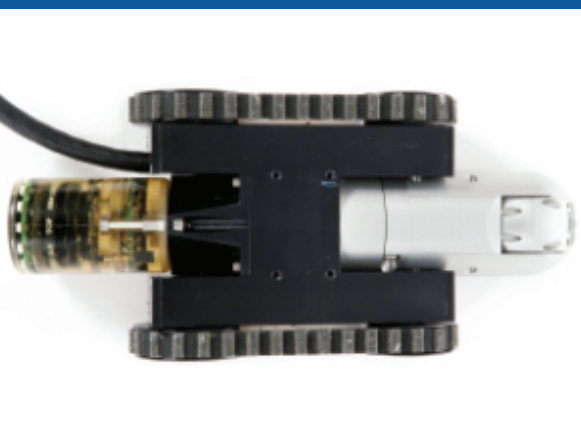
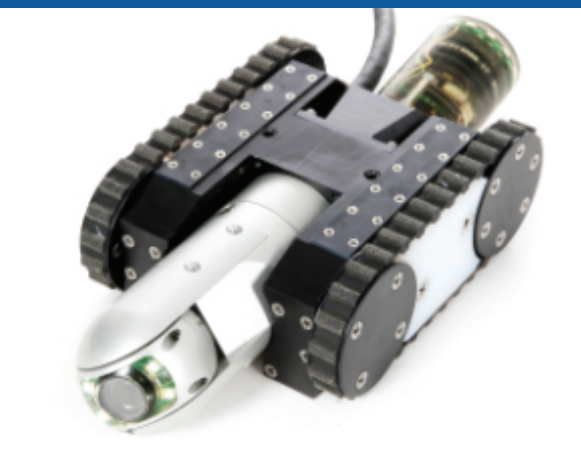
## Control System

**Power** 88 264 VAC 50/60Hz

**Chassis** 19" rack mount

**Dimensions** 19"W x 12"L x 5.75" H (476mm x 146mm x 304mm)

**Options** Pelican case



Specifications subject to change