

Stonebridge Homes, Inc.- Upgrades List

Refer to the Specifications Attached to the Purchase and Sales Agreement as Some Options Below Are Standard

1. Exterior, Framing & Structural	<u>Price</u>
<u>Garage:</u>	
Exterior Door into Garage (see signed house plan for location) Prior to Foundation	
<u>Ceilings:</u>	
1st Floor- 8' 3" Ceiling Height- Per Floor	
1st Floor- 9' Ceiling Height- Per Floor	
Family Room- 10' High Vaulted Ceiling	
Master Bedroom - 10' High Vaulted Ceiling	
<u>Windows:</u>	
Additional Double Hung Window (per window)	
Mullion Window	
Transom Window	
<u>Front Doors:</u>	
Deadbolt & Thumb Latch	
Group 1- Upgraded Front Door- Door Only- No Sidelights- Includes Deadbolt & Thumb Latch	
Group 1- Upgraded Front Door with Matching Sidelights- Includes Deadbolt & Thumb Latch	
Group 2- Upgraded Front Door- Door Only- No Sidelights- Includes Deadbolt & Thumb Latch	
Group 2- Upgraded Front Door with Matching Sidelights- Includes Deadbolt & Thumb Latch	
<u>Slider Doors:</u>	
6' Slider with Blinds Between Glass (price to reflect cost difference from standard slider door)	
8' Slider with Clear Glass (price to reflect cost difference from standard slider door)	
9' Slider with Clear Glass (price to reflect cost difference from standard slider door)	
9' Slider with Blinds Between Glass (price to reflect cost difference from standard slider door)	
<u>Decking:</u> See Deck Cheat Sheet	
Deck- DESIRED SIZE- (Pressure Treated Deck w/ Pressure Treated Railings)	
Upgrade Decking (from PT to Composite with PT Railings) (additional to PT upgrade)	
Upgrade Deck (from PT to Composite with Vinyl Railings) (additional to PT upgrade)	
Upgrade Deck (from PT to Composite with Black Aluminum Railings- Hand Rails & Posts to be White Vinyl) (additional to PT upgrade)	
Upgrade Deck (from PT to Composite with Black Aluminum Railings- Hand Rails & Posts to be Black Vinyl) (additional to PT upgrade)	

Note: All above upgrades include credits for base price materials/ depending on time of sale, certain upgrades and changes may not be available due to construction scheduling considerations / prices, models are subject to change without prior notice.

[illegible]

[illegible]

Note: All above upgrades include credits for base price materials/ depending on time of sale, certain upgrades and changes may not be available due to construction scheduling considerations / prices, models are subject to change without prior notice.

Stonebridge Homes, Inc.- Upgrades List

Refer to the Specifications Attached to the Purchase and Sales Agreement as Some Options Below Are Standard

4. Plumbing	Price
<u>Kitchen</u>	
Gas Range Hookup (cost for gas line to appliance only)	
Garbage Disposal (included dedicated circuit)	
Add Additional Sink (includes plumbing, Small Undermounted SS Bar Sink & standard builders faucet)	
Pot Filler- Delta- 1177LF: Chrome- "Traditional Style" (cost includes plumbing & fixture)	
Pot Filler- Delta- 1177LFSS: Brushed Nickel- "Traditional Style" (cost includes plumbing & fixture)	
Pot Filler- Delta- 1177LFRB: Oil Rubbed Bronze- "Traditional Style" (cost includes plumbing & fixture)	
Pot Filler- Delta- D1165LF: Chrome- "Contemporary Style" (cost includes plumbing & fixture)	
Pot Filler- Delta- D1165LFSS: Brushed Nickel- "Contemporary Style" (cost includes plumbing & fixture)	
Pot Filler- Delta- D1165LFBL: Matte Black- "Contemporary Style" (cost includes plumbing & fixture)	
<u>Bathrooms</u>	
Plumbing Fixtures- Style: Alteo-- Finish: Chrome (Bathroom Faucets & Shower Fixtures)	
Plumbing Fixtures- Style: Devonshire-- Finish: Chrome (Bathroom Faucets & Shower Fixtures)	
Plumbing Fixtures- Style: Alteo-- Finish: Brushed Nickel (Bathroom Faucets & Shower Fixtures)	
Plumbing Fixtures- Style: Devonshire-- Finish: Brushed Nickel (Bathroom Faucets & Shower Fixtures)	
Plumbing Fixtures- Style: Alteo-- Finish: Oil Rubbed Bronze (Bathroom Faucets & Shower Fixtures)	
Plumbing Fixtures- Style: Devonshire-- Finish: Oil Rubbed Bronze (Bathroom Faucets & Shower Fixtures)	
Plumbing Fixtures- Style: Riff-- Finish: Matte Black (Kitchen Faucet, Bathroom Faucets & Shower Fixtures)	
8" Bathroom Faucet Spread (per faucet- any style)	
Elongated/ Comfort Height Toilet (Builder's Selection)	
Convert Half Bath to Full Bath (with Fiberglass Shower Unit)	
Convert Half Bath to Full Bath (with Fiberglass Tub/Shower Unit)	
<u>Vanities</u>	
Pedestal Sink (price to reflect cost difference of standard vanity and countertop)	
Main Bathroom- Double Bowl Vanity (up to 60" in length)	
Master Bathroom- Double Bowl Vanity (up to 60" in length)	
<u>Showers</u>	
Location- Standard Shower Head and Handheld Sprayer with Diverter- Chrome Finish	
Location- Standard Shower Head and Handheld Sprayer with Diverter- BN Finish	
Location- Standard Shower Head and Handheld Sprayer with Diverter- ORB Finish	
Location- Rain Shower and Handheld Sprayer with Diverter (price to reflect cost difference from standard shower head)- Chrome Finish	
Location- Rain Shower and Handheld Sprayer with Diverter (price to reflect cost difference from standard shower head)- BN Finish	
Location- Rain Shower and Handheld Sprayer with Diverter (price to reflect cost difference from standard shower head)- ORB Finish	
Location- Additional Standard Shower Head	

Note: All above upgrades include credits for base price materials/ depending on time of sale, certain upgrades and changes may not be available due to construction scheduling considerations / prices, models are subject to change without prior notice.

Stonebridge Homes, Inc.- Upgrades List

Refer to the Specifications Attached to the Purchase and Sales Agreement as Some Options Below Are Standard

4. Plumbing - cont.	<u>Price</u>
<u>Soaker Tubs Packages</u>	
Primary Bathroom- Soaking Tub Package: a. Traditional Style- Soaker Tub (Slipper Style- OVE) b. Tub Filler- Chrome Finish c. Tempered Glass Window above Tub d. Shower- Standard Tile Shower Walls w/ Fiberglass Pan (includes 2 corner shelves) e. Tankless Hot Water Heater	
Primary Bathroom- Soaking Tub Package: a. Modern Style- Soaker Tub (Rectangle Style) b. Tub Filler- Chrome Finish c. Tempered Glass Window above Tub d. Shower- Standard Tile Shower Walls w/ Fiberglass Pan (includes 2 corner shelves) e. Tankless Hot Water Heater	
<i>Soaker Tubs Packages- cont.</i>	
Tub Filler- Brushed Nickel Finish	
Tub Filler- Oil Rubbed Bronze Finish	
Tub Filler- Matte Black Finish	
<u>Miscellaneous</u>	
Gas Dryer Hookup (cost for gas line to future appliance only)	
Gas Grill Hookup Stub (for future gas grill)	
Laundry Room- Basic Utility Sink	
Exterior- Additional Water Spigot	
<u>Basements</u>	
Basement- Upgrade to 80 Gallon Hot Water Heater	
Basement- Tankless Hot Water Heater	
Basement- Sump Pump (installed)	
Rough Bathroom in Basement- Half Bath Only- Sink and Toilet (does not include ejector pump)	
Rough Bathroom in Basement- Sink, Toilet, and Shower Unit (does not include ejector pump)	
Rough bathroom in Basement- Sink, Toilet, and Tub/ Shower Unit (does not include ejector pump)	
Finished Full Bathroom (w/ Fiberglass Shower Unit) in Basement (includes fiberglass shower unit and ejector pump)	
Finished Full Bathroom (w/ Tub/Shower Unit) in Basement (includes fiberglass shower unit and ejector pump)	
<u>Notes:</u>	

Note: All above upgrades include credits for base price materials/ depending on time of sale, certain upgrades and changes may not be available due to construction scheduling considerations / prices, models are subject to change without prior notice.

Stonebridge Homes, Inc.- Upgrades List

Refer to the Specifications Attached to the Purchase and Sales Agreement as Some Options Below Are Standard

5. Electrical	<u>Price</u>
<u>Internet & TV</u>	
Cable Outlet or Phone Jack	
HDMI (up to 25' in length)	
CAT 6	
CAT 7 (includes 10 points or up to 1,000 ft of line)	
TV Mounting Package #1: Standard Cable (included in specs) with Electrical Outlet	
TV Mounting Package #2: Electrical Outlet & HDMI cable to location directly under TV	
TV Mounting Package #3: Recessed Media box with 25ft HDMI cable to desired location	
TV Mounting Package #4: Recessed Media box with over 25ft HDMI cable to desired location (includes media closet electrical outlet)	
<u>Switches & Outlets</u>	
Decora Switches - entire home- switches ONLY	
Decora Outlets - entire home- outlets ONLY	
Electrical Outlet (indoor)	
Electrical Switch (indoor)	
Floor Outlet (indoor)	
Laundry Closet- Door Switch (to control light when opening and closing the doors) (if applicable)	
USB Outlet- in place of code outlet	
USB Outlet- additional to code outlet	
Dimmer Switch- Toggle Style	
Dimmer Switch- Decora Style	
Exterior Electrical Outlet	
<u>Lighting & Fans</u>	
Additional Dome Light Fixture	
Recessed Light Fixture	
Switched Flood Light	
Motion Light	
Wall Sconce with fixture- builder's choice	
Puck Light- per Light	
Under Cabinet Lighting per Light- builder's choice	
Ceiling Fan Box & Wiring Only (Buyer to provide Fan Fixture)	
Ceiling Fan Box & Wiring with Fan Fixture (Builders Selection)	
<u>Bathroom Fans & Misc. Items</u>	
Outlet installed in Vanity Drawer (per outlet)	
Additional Bathroom Fan/ Light Combo (used when enclosing water closet)	
Standard Delta Heat Fan (includes dedicated circuit and switch)	
Panasonic Heat Fan (includes dedicated circuit and switch)	

Note: All above upgrades include credits for base price materials/ depending on time of sale, certain upgrades and changes may not be available due to construction scheduling considerations / prices, models are subject to change without prior notice.

5. Electrical- cont.

220v/ 50 AMP Car Charger (wiring and outlet only)

(Top plug of outlet to be controlled by switch in master bedroom. Bottom plug of outlet will not be controlled by the switch.)

- a. (1) First outlet- dedicated 120v circuit
- b. (7) Remaining outlets
- c. (1) Switch

Transfer Switch- (16) set circuits with 1 outside inlet (needs to be predetermined at electrical walkthrough)

Lamp Post- Wiring Only (does not include post)

Lamp Post- Fully Installed (material and standard post- builder's choice)

Lamp Post Outlet

Notes:

Stonebridge Homes, Inc.- Upgrades List

Refer to the Specifications Attached to the Purchase and Sales Agreement as Some Options Below Are Standard

6. Interior Trim & Carpentry	<u>Price</u>
<u>Interior Trim & Carpentry</u>	
Door Levers Throughout	
Stairs to Second Floor- Square Balusters	
Stairs to Basement- Square Balusters	
Stafford Casing- 3 ½" Throughout (only to be purchased when home has 7 ¼" Speed Base Throughout)	
Upgrade Carpentry Package (3 ½" Stafford Casing, 7 ¼" Speed Base Throughout)	
Upgrade Carpentry Package (1x4 Flat Shaker Casing, 1x8 Flat Shaker Speed Base Throughout)	
Mudroom Bench Area- Bench Only- up to 5' in length	
Mudroom Bench Area- Bench w/ bead board & hooks- up to 5' in length	
Mudroom Bench Area- Bench w/ bead board, hooks & cubbies- up to 5' in length	
Dining Room Trim Upgrade (Chair Rail & Panels)	
<u>Laundry Room</u>	
Beadboard Above Washer & Dryer (when having 3 cabinets over machines)	
Beadboard Above Washer & Dryer (when having 2 cabinets over machines and 1 shelf in between cabinets- beadboard to go to ceiling in between wall cabinets)	
<u>Ceiling Trim</u>	
Location- Crown Molding (Per Room)	
Kitchen- Island Crown- Traditional Style	
Kitchen- Island Crown- Contemporary Style	
Location- Coffered Ceiling- Traditional Style (Per Room)	
Location- Coffered Ceiling- Contemporary Style (Per Room)	
<u>Interior Doors</u>	
Group 1 Interior Door Style- Hollow Core- 2 Panel- Square ; 2 Panel- Arch ; Cheyenne ; 4 Panel Smooth ; 6 Panel Smooth	Included
Group 2 Interior Door Style- Hollow Core- Lincoln Park ; Livingston ; Logan ; Winslow (price to reflect cost difference between group 1 and group 2 hollow door styles)	
Group 1 Interior Door Style- Solid Core- 2 Panel- Square ; 2 Panel- Arch ; Cheyenne ; 4 Panel Smooth ; 6 Panel Smooth (price to reflect cost difference from Hollow to Solid Core Upgrade)	
Group 2 Interior Door Style- Solid Core- Lincoln Park ; Livingston ; Logan ; Winslow (price to reflect cost difference between Group 1 Hollow Doors to Group 2 Solid Door Styles)	

Note: All above upgrades include credits for base price materials/ depending on time of sale, certain upgrades and changes may not be available due to construction scheduling considerations / prices, models are subject to change without prior notice.

Stonebridge Homes, Inc.- Upgrades List

Refer to the Specifications Attached to the Purchase and Sales Agreement as Some Options Below Are Standard

6. Interior Trim & Carpentry- cont.	<u>Price</u>
<u>Barn Doors</u>	
Barn Door- Unfinished	
Barn Door- Painted White	
Barn Door- Stained to Match HW Flooring	
<u>Interior Doors</u>	
Laundry- Frosted Glass "Laundry" Door	
Pantry- Frosted Glass "Pantry" Door	
Location- Additional Interior Door (per door)	
Location- Single French Door (Interior)	
Location- Double French Doors (Interior)	
Location- Pocket Door (per door)	
Location- Pocket Single French Door	
Location- Pocket Double French Door	
Location- Enclose Water Closet (Includes Additional Bathroom Fan/ Light Combo)	
<u>Basement Items</u>	
Finished Basement- min of 300 sq. ft. required (per Builder's Specs; doesn't include bath or kitchen)	
Stairs from 1st Floor to Basement- Hardwood	
Basement Plumbing	
Vinyl Flooring	
<u>Additional Fireplace Options: (add this to the fireplace cost)</u>	
Fiber Cement Shiplap- Floor to Ceiling- up to 10' high	
Floating Wooden Mantel (installed 18" above fireplace)- Stained to Match Hardwood Flooring	
Family Room- Built In Shelving (up to 10' high)- final design TBD- up to 36" wide (per side/ built in)	
Family Room- Built In Shelving (up to 10' high)- final design TBD- 37" - 72" wide (per side/ built in)	
<u>Notes:</u>	

Note: All above upgrades include credits for base price materials/ depending on time of sale, certain upgrades and changes may not be available due to construction scheduling considerations / prices, models are subject to change without prior notice.

Stonebridge Homes, Inc.- Upgrades List

Refer to the Specifications Attached to the Purchase and Sales Agreement as Some Options Below Are Standard

7. Painting	<u>Price</u>
Extra Color per room - one coat prime & one coat- flat finish- latex paint	
Extra Color per floor- one coat prime & one coat- flat finish- latex paint	
Upgraded Color per room - one coat prime & one coat- flat finish- latex paint	
Upgraded Color per floor- one coat prime & one coat- flat finish- latex paint	
<u>Notes:</u>	
8. Appliances	<u>Price</u>
Vented Microwave (over the range) to Exterior (under 400 CFM- does not include appliance)	
Hood Appliance with Vent to Exterior (under 400 CFM)	
Vented Hood (over the range) to Exterior (400-1,000 CFM- does not include appliance)	
Vented Hood (over the range) to Exterior (above 1,000 CFM- does not include appliance)	
Wall Oven & Microwave (appliances to match standard appliances, cabinet, additional connect)	
<u>Deluxe Appliance Package:</u>	
a. Vented Hood (under 400 CFM)	
b. Microwave Drawer	
c. Upgraded Appliances	
d. Kitchen- Upgrade 1 Tile Backsplash	
<u>Professional Chef's Kitchen Package:</u>	
a. Vented Hood (under 400 CFM)	
b. Wall Oven & Microwave	
c. Professional Appliances	
d. Level 2 Cabinets	
e. 8' Cabinets w/ Crown	
f. 72" Island w/ One Overhang	
g. Upgraded Kitchen Sink (Undermount Stainless Steel)	
h. Kitchen- Upgrade 1 Tile Backsplash	
i. (5) Under Cabinet Lights	
<u>Notes:</u>	

Note: All above upgrades include credits for base price materials/ depending on time of sale, certain upgrades and changes may not be available due to construction scheduling considerations / prices, models are subject to change without prior notice.

Stonebridge Homes, Inc.- Upgrades List

Refer to the Specifications Attached to the Purchase and Sales Agreement as Some Options Below Are Standard

9. Cabinetry	Price
<u>Kitchen Sinks</u>	
Kitchen Sink- Bowl and a Half Sink	
Kitchen Sink- Large Single Bowl Sink	
Kitchen Sink- Farmers Sink- Porcelain- w/ Standard Kitchen Faucet	
Kitchen Sink- Farmers Sink- Stainless Steel- w/ Standard Kitchen Faucet	
Kitchen- Soap Dispenser (will match kitchen faucet) - Specify Location- Right or Left of Faucet	
<u>Cabinetry by Wellborn Forest</u>	
<u>Level 1- Cabinetry Selection</u>	Included
Styles: Devon & Pima	
Paint Colors: Polar ; Arctic ; Opal ; Moonlight ; Lily Pad ; Marengo ; Oyster ; Quick Silver ; Tiffany ; Malibu ; Layka ; Caviar	
Stain Colors: Wheat ; Kodiak ; Earl Gray ; Java ; Sweet Tea ; Sienna ; Honey ; Nutmeg ; Pumice ; Pecan Pie	
<u>Level 2- Cabinetry Selection</u>	
Styles: Vail, Lincoln Road & Shelby	
Colors: Paint & Stain Colors- All Included from Builders Selections	
<u>Level 3- Cabinetry Selection</u>	
Styles: Boston, Chiswick, Monterey	
Colors: Paint & Stain Colors- All Included from Builders Selections	
<u>Kitchen Cabinetry Options</u>	
Kitchen- 8' Cabinets with Crown	
Kitchen- 9' Cabinets with Larger Crown	
Kitchen- (count) Bank of Drawers (Each)	
Kitchen- (count) Floating Shelves (per shelf)	
Kitchen- (count) Glass Door (Per Door)	
Undermount Wall Cabinet for Microwave	
Add Base Cabinet w/ Wall Cabinet Above (up to 30"wide) (standard granite selection)	
<u>Kitchen Island</u> (includes two pendant lights & additional electrical outlets per code):	
Kitchen Island- 48" Cabinets with two overhangs (standard granite selection)	
Kitchen Island- 48" Cabinets with two overhangs (upgrade granite selection)	
Kitchen Island- 60" Cabinets with two overhangs (standard granite selection)	
Kitchen Island- 60" Cabinets with two overhangs (upgrade granite selection)	
Kitchen Island- 72" Cabinets with one overhang (standard granite selection)	
Kitchen Island- 72" Cabinets with one overhang (upgrade granite selection)	
Shiplap on Back Side of Island (up to 72" in length)	

Note: All above upgrades include credits for base price materials/ depending on time of sale, certain upgrades and changes may not be available due to construction scheduling considerations / prices, models are subject to change without prior notice.

9. Cabinetry - cont.

Pantry Cabinets w/ Adjustable Shelving

Standard Cabinet Line:

Kitchen Cabinets- 18"- 24" Wide Pantry Cabinet w/ Adjustable Shelves (Standard Cabinet Line)

Kitchen Cabinets- 30"- 36" Wide Pantry Cabinet w/ Adjustable Shelves (Standard Cabinet Line)

Upgrade 1 Cabinet Line:

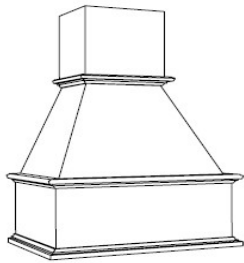
Kitchen Cabinets- 18"- 24" Wide Pantry Cabinet w/ Adjustable Shelves (Upgrade 1 Cabinet Line)

Kitchen Cabinets- 30"- 36" Wide Pantry Cabinet w/ Adjustable Shelves (Upgrade 1 Cabinet Line)

Upgrade 2 Cabinet Line:

Kitchen Cabinets- 18"- 24" Wide Pantry Cabinet w/ Adjustable Shelves (Upgrade 2 Cabinet Line)

Kitchen Cabinets- 30"- 36" Wide Pantry Cabinet w/ Adjustable Shelves (Upgrade 2 Cabinet Line)



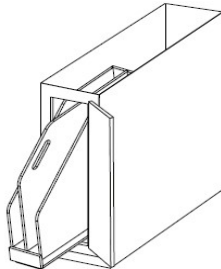
Painted or Stained to
Match Cabinet Finish



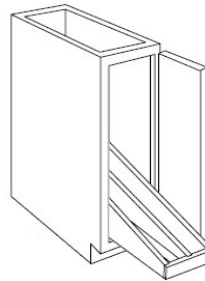
Wood Hood w/ Blower:

(includes Vent to Exterior, under 400CFM)

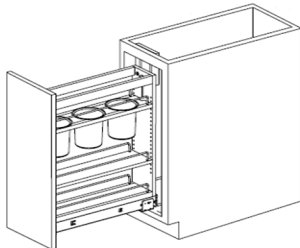
Kitchen- (count) Roll-Outs (Per Roll-Out):



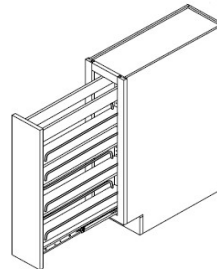
Base Tray Divider- Pullout:



Tray Divider- Rollout:

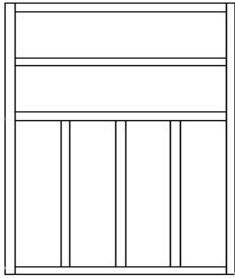


Utensil Pullout (Base Cabinet):

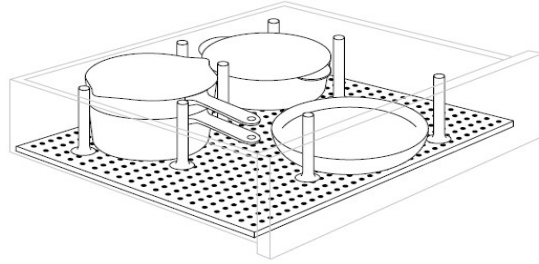


Spice Rack Pullout (Base Cabinet):

9. Cabinetry - cont.



Silverware Tray:



Drawer Peg System:

Bathrooms:

Bathroom Vanities: ([standard height vanity- 31 ½" --- comfort height vanity- 34 ½"](#))

Location- Comfort Height Bathroom Vanity- up to 48" in length

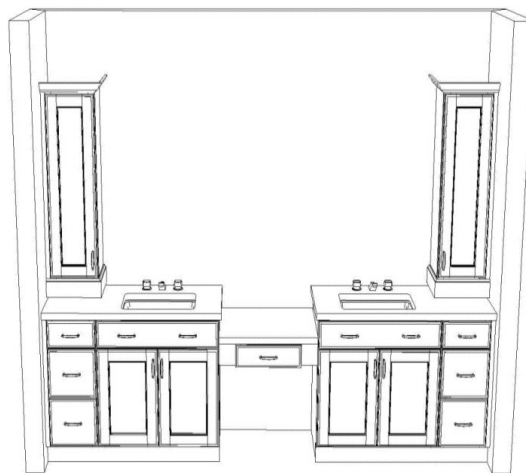
Location- Comfort Height Bathroom Vanity- 49"-60" in length

Location- Comfort Height Bathroom Vanity- 62" + in length

Luxury Master Bath Vanity Package Includes:

- a. (3) Small Recessed Lights (wiring and install of lights and switch)
- b. (2) Wall Sconces (builder selection)
- c. Custom Soffit
- d. Framed Mirrors
- e. Double Bowl Vanity w/ Make Up Area Between Sinks and (2) Counter Top Cabinets on Vanity Ends
(see attached 3D rendering for design)
(final measurements are determined from field measure)

This is standard cabinetry and standard granite.



Laundry

Upgrade 2 Cabinets

Countertops for Laundry

C



Notes:

Stonebridge Homes, Inc.- Upgrades List

Refer to the Specifications Attached to the Purchase and Sales Agreement as Some Options Below Are Standard

10. Countertops	<u>Price</u>
<u>Granite</u>	
Granite - Standard	Included
<i>Azul Platino, Bianco Sardo, Carioca Gold, Giallo Fioritto, Giallo White, New Caledonia,</i>	
<i>Ubatuba, White Dallas, Viscond White Polished</i>	
<u>Kitchen- Granite - Upgrade Options</u>	
<i>Fantasy Brown, Giallo Ornamental , Kashmir White, Moon White, Saint Gabriel Black,</i>	
<i>Silver Pearl, St. Cecilia Dark, St. Cecilia Light, Viscond White Leather</i>	
<u>Kitchen Island- Granite - Upgrade Options</u>	
<u>Bathrooms- Granite - Upgrade Options</u>	
Countertop up to 4'	
Countertop between 4' and 6'	
<u>Laundry Countertops</u>	
<u>Quartz</u>	
<u>Group 1 (Q Quartz)</u>	
Group 1 (Q Quartz)- Kitchen (up to 49 sq feet)	
Group 1 (Q Quartz)- 48" island	
Group 1 (Q Quartz)- 60" island	
Group 1 (Q Quartz)- 72" island	
Group 1 (Q Quartz)- 84" island	
Group 1 (Q Quartz)- 96" island	
Countertops up to 4' in length (Group 1 quartz)	
Countertops between 4' and 6' (Group 1 quartz)	
<u>Group 2 (Q-Quartz)</u>	
Group 2 (Q Quartz)- Kitchen (up to 49 sq feet)	
Group 2 (Q Quartz)- 48" island	
Group 2 (Q Quartz)- 60" island	
Group 2 (Q Quartz)- 72" island	
Group 2 (Q Quartz)- 84" island	
Group 2 (Q Quartz)- 96" island	
Countertops up to 4' in length (Group 2 quartz)	
Countertops between 4' and 6' (Group 2 quartz)	
<u>Group 3 (Spectrum Quartz)</u>	
Group 3 (spectrum Quartz)- Kitchen (up to 49 sq feet)	
Group 3 (spectrum Quartz)- 48" island	
Group 3 (spectrum Quartz)- 60" island	
Group 3 (spectrum Quartz)- 72" island	

Note: All above upgrades include credits for base price materials/ depending on time of sale, certain upgrades and changes may not be available due to construction scheduling considerations / prices, models are subject to change without prior notice.

Stonebridge Homes, Inc.- Upgrades List

Refer to the Specifications Attached to the Purchase and Sales Agreement as Some Options Below Are Standard

10. Countertops - cont.	<u>Price</u>
Group 3 (spectrum Quartz)- 84" island	
Group 3 (spectrum Quartz)- 96" island	
Countertops up to 4' in length (Group 3 quartz)	
Countertops between 4' and 6' (Group 3 quartz)	
<u>Group 4 (Raphael Stone)</u>	
Group 4 (Raphael Stone)- Kitchen (up to 49 sq feet)	
Group 4 (Raphael Stone)- 48" island	
Group 4 (Raphael Stone)- 60" island	
Group 4 (Raphael Stone)- 72" island	
Group 4 (Raphael Stone)- 84" island	
Group 4 (Raphael Stone)- 96" island	
Countertops up to 4' in length (Group 4 quartz)	
Countertops between 4' and 6' (Group 4 quartz)	
<u>Group 5 (Spectrum Quartz)</u>	
Group 5 (Spectrum Quartz)- Kitchen (up to 49 sq feet)	
Group 5 (Spectrum Quartz)- 48" island	
Group 5 (Spectrum Quartz)- 60" island	
Group 5 (Spectrum Quartz)- 72" island	
Group 5 (Spectrum Quartz)- 84" island	
Group 5 (Spectrum Quartz)- 96" island	
Countertops up to 4' in length (Group 5 quartz)	
Countertops between 4' and 6' (Group 5 quartz)	
<u>Group 6 (Spectrum Quartz)</u>	
Group 6 (Spectrum Quartz)- Kitchen (up to 49 sq feet)	
Group 6 (Spectrum Quartz)- 48" island	
Group 6 (Spectrum Quartz)- 60" island	
Group 6 (Spectrum Quartz)- 72" island	
Group 6 (Spectrum Quartz)- 84" island	
Group 6 (Spectrum Quartz)- 96" island	
Countertops up to 4' in length (Group 6 quartz)	
Countertops between 4' and 6' (Group 6 quartz)	
<u>Notes:</u>	

Note: All above upgrades include credits for base price materials/ depending on time of sale, certain upgrades and changes may not be available due to construction scheduling considerations / prices, models are subject to change without prior notice.

Stonebridge Homes, Inc.- Upgrades List

Refer to the Specifications Attached to the Purchase and Sales Agreement as Some Options Below Are Standard

11. Flooring & Tile	<u>Price</u>
<u>Carpet</u>	
Master Bedroom/ Family/ Living Room- Upgraded Carpet	
Additional Bedroom/ Study- Upgraded Carpet	
Staircase- Upgraded Carpet	
2nd Floor Hallway- Upgraded Carpet	
2nd Floor Loft- Upgraded Carpet	
Master Bedroom/ Family/ Living Room- Berber Carpet	
Additional Bedroom/ Study- Berber Carpet	
Staircase- Berber Carpet	
2nd Floor Hallway- Berber Carpet	
2nd Floor Loft- Berber Carpet	
<u>Hardwood</u>	
Foyer	N/C
Kitchen	N/C
Dining Room	N/C
Family Room/ Great Room- Hardwood	
Study- Hardwood	
Stairs- 1st to 2nd Floor- Hardwood	
2nd Floor Hallway- Hardwood	
2nd Floor Loft Area- Hardwood	
Master Bedroom	
Room Count- Additional Bedroom- Hardwood	
<u>Vinyl Flooring</u>	
Basement- Vinyl Flooring	
<u>Floor Tile</u>	
Location- Upgrade 1 Floor Tile (per bathroom or laundry room)	
Location- Upgrade 2 Tile (per bathroom or laundry room)	
Location- Upgrade 3 Tile (per bathroom or laundry room)	
<u>Tile Shower Walls</u> (for showers up to 5' in length)	
Bathroom- Standard Tile- Shower Walls (tile size 12" x 12") w/ Fiberglass Pan (includes two shower shelves)	
Bathroom- Upgrade 1 Tile- Shower Walls w/ Fiberglass Pan (includes two shower shelves)	
Bathroom- Upgrade 2 Tile- Shower Walls w/ Fiberglass Pan (includes two shower shelves)	
Bathroom- Upgrade 3 Tile- Shower Walls w/ Fiberglass Pan (includes two shower shelves)	
Bathroom- Tile Shower- Tile Accent Strip- 1 Strip at Eye Level	
Bathroom- Tile Shower- Tile Accent Strip- 1' Wide on Plumbing Wall	

Note: All above upgrades include credits for base price materials/ depending on time of sale, certain upgrades and changes may not be available due to construction scheduling considerations / prices, models are subject to change without prior notice.

11. Flooring & Tile- cont.

Note: All above upgrades include credits for base price materials/ depending on time of sale, certain upgrades and changes may not be available due to construction scheduling considerations / prices, models are subject to change without prior notice.

[illegible]

Note: All above upgrades include credits for base price materials/ depending on time of sale, certain upgrades and changes may not be available due to construction scheduling considerations / prices, models are subject to change without prior notice.