

CEMHER®

- ORIGIN -

microcement

Manufacturing since 1940

ONE OF THE MOST ESTABLISHED COMPANIES IN THE COUNTRY



Transcending is our goal. To go beyond. That is what we seek with the creation of Cemher.

Our experience (backed by the Kilnher Group) allows us to relaunch microcement from another dimension.

Until now, microcement has been a decorative coating plagued by technical problems and doubts about its application. It acquired a bad reputation caused by lack of knowledge and poor technical advice from some inexperienced companies.

With the arrival of Cemher, a microcement of superior quality resurfaces and with it, a technical substrate that provides the necessary solutions to possible unforeseen events. We have made an effort to solve all the technical problems that have arisen in the past and that have overshadowed this appreciated coating.

CEMHER is a reality thanks to our experience in the chemical sector and the experience gained over the years as manufacturers and suppliers for other microcement companies that commercialize it under their own brand. We consider this one of our added values, since our experience is superior to that of other companies in the sector.

This background and trajectory allow us to launch innovative products to the market that our competitors cannot offer. Improvement and innovative spirit are two of the components of our essence that best define us.

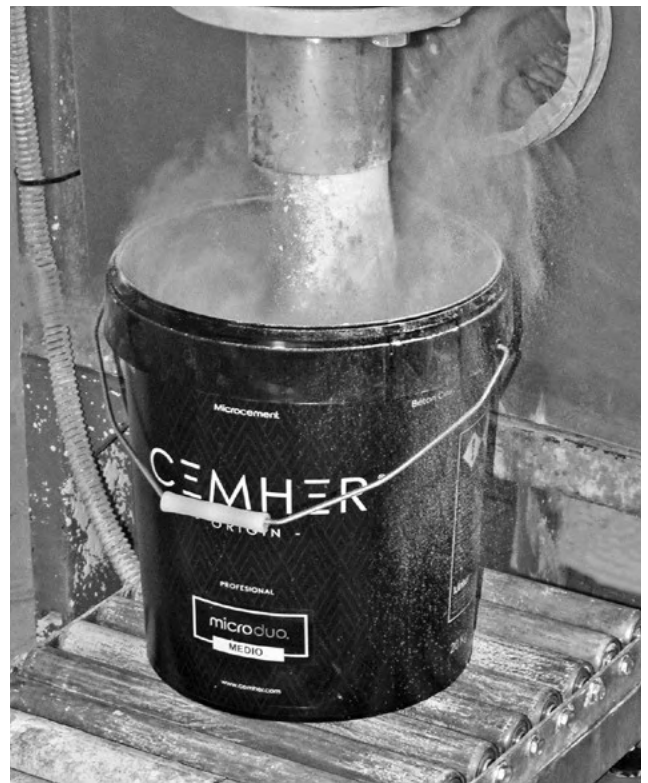
From here, our brand claim was born:

“Origin”

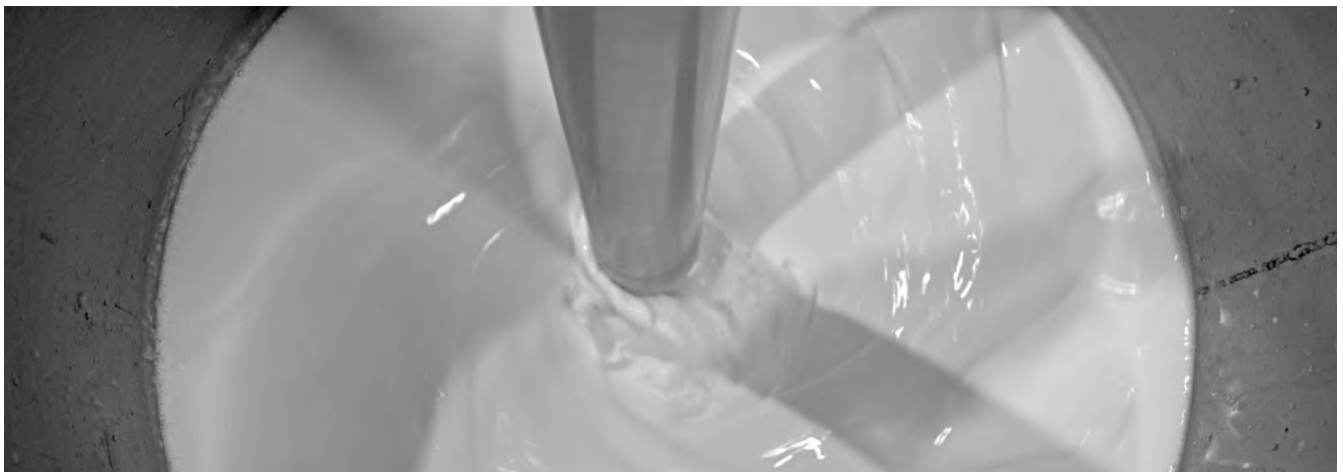
Origen: from lat. origo, -inis.
Principle, birth, source, root and cause of something.

Cemher is just that, the beginning. The origin of microcement manufacturers. In turn, microcement is the origin of a space that has yet to be created. All it takes is four empty walls and the microcement will transform that inert place into a space with soul.

Microcement is also the origin of your project. Bet on it and transcend its dimension.



From Cemher, as expert manufacturers of microcement, we advise professionals and private customers who are interested in this material, to be informed and be aware of the quality of the material to be purchased. A timely choice of the manufacturer is essential to achieve the expected final result.



Microcement is a decorative coating composed of a cementitious base mixed with polymers, fibers, resins, aerators, ultrafine aggregates and mineral pigments; it does not require expansion joints and has a thickness of 1 to 3 mm. This material is ideal for covering walls and floors without the need to remove the existing material.

- Ideal for modern and minimalist environments.
- Applicable on all types of surfaces: walls, floors, furniture, swimming pools.
- Continuous flooring (no joints required).
- Diversity of colours.
- Different finishes and textures.
- High resistance.
- Easy maintenance.

Microcement features:



Elasticity
and
flexibility



Fits any
shape or
geometry



Durable
and
robust



Adherence on
all types of
substrate



Continuous



Fire-
retardant



UV-
resistant



Stain-
resistant



Excellent
chemical and
mechanical
resistance

Suitable for:



Furniture



Radiant
floor
heating



Indoors
Outdoors





- THE SIMPLICITY -

2 IN 1 - READY TO USE OR DUAL-COMPONENT MICROCEMENT

The new formula of the Microne microcement line, based on polyurethane, is characterized by being the most versatile line: it is 2 products in 1. Microne can be a 'ready-to-use' microcement with a hardness of 27 Mpa, or a 'bicomponent' microcement if we add component B (Catalyst), thus increasing its hardness to 65 Mpa.

Microne 'Bi-component' allows its application on high traffic floors, with an excellent result. Microne 'ready-to-use' is waterproof in mass, but by adding the catalyst we increase its waterproofing even more.

In both versions, just add the color and shake. Thanks to its high impermeability it is not necessary to apply several coats of pore-sealer to protect it; two coats of varnish are enough to avoid dust and stains. In addition, the possible marks of the roller and those produced by the absorption of the surface are avoided. The time of execution/application decreases considerably by not requiring extra coats of pore-sealer, or waiting time between coats. It is ideal for humid places such as bathrooms, shower trays, saunas or exteriors since it does not darken when in contact with water. It has a great adhesion on different substrates and very good resistance to wear. Easy workability and application. It is not suitable for swimming pools or surfaces in continuous immersion.



Waterproof



2 Versions:
Continuous effect
Stucco effect

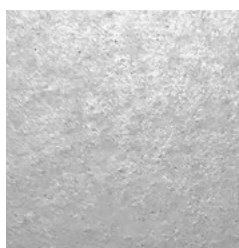
27-65 MPa

Compressive strength

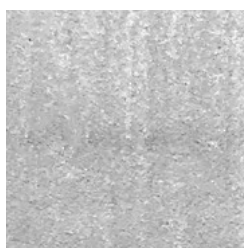
2 Versions

Ready-to-use

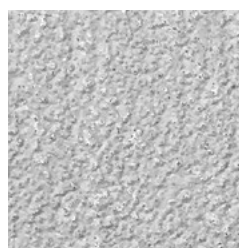
GRANULOMETRIES



Fine



Medium



Base

PU MICROCEMENT SPECIFICATION

MICRONE - MICROCEMENT 2 IN 1 - READY TO USE OR DUAL COMPONENT

The new formula of the **Microne®** microcement line, based on poly-urethane, is characterized by being the most versatile line, as it consists of two possible products in one.

Microne® can be a 'ready-to-use' microcement with a hardness of 27 Mpa, or a 'dual component' microcement if we add component B (Catalyst), thus increasing its hardness to 50 Mpa.

Microne® 'Bi-component' allows its application on high traffic floors, with an excellent result. Microne® 'ready to use' allows its application on walls with many structural cracks, it has an incredible elasticity. It

is waterproof in bulk, but by adding the hardener we increase its impermeability even more. For both versions just add the color and stir.














Thanks to its high impermeability it is not necessary to apply several coats of pore sealer, with two coats of varnish is enough to avoid dust and stains. Besides, it also helps to avoid the possible marks of the roller and those produced by the irregular absorption of the surface. The time of execution of work decreases considerably by not requiring layers of pore sealer or additional coats of varnish.

Microne® is suitable for the realization of:

- Highly decorative continuous coatings for interior and exterior floors, walls and ceilings.
- Coating of furniture, shelves, kitchen countertops, counters, etc..
- Not suitable for swimming pools or continuously immersed surfaces.
- Covering of old ceramic tile surfaces.
- Ideal for humid areas such as bathrooms, shower trays or exteriors since it does not darken due to water.
- Application on interior or exterior pedestrian pavements on cementitious substrates.

- Decorative coating for stores, offices, lobbies, exhibition areas, homes, etc.
- Continuous coating 2 in 1. You can choose a great flexibility for walls or a great hardness for floors.
- Applicable on almost any type of surface: concrete, cement mortars, ceramics, gypsum, plasterboard, etc.
- Excellent workability and application.
- Impermeability in mass.
- Non-yellowing.
- Applicable in interiors and exteriors.

MICRONE PLUS TECHNICAL SPECIFICATIONS

		STANDARD	RESULT
	Determination of emissions into indoor air UNE EN 16516:2018	UNI EN ISO 16000-6:2019	A+
	Thermal conductivity	UNI EN 12664:2002	$\lambda=1,24$ (W/mK)
	Reaction to fire classification 1* UNE EN 13501-1:2019	UNI EN 13501-1:2019	Class B Class B _{FL}
	Determination of adhesion strength UNE EN 13813:2014	UNI EN 13892-8:2003	>5 N\mm ² Class B 5,0
	Impact resistance UNE EN 13813:2014	UNI EN 6272-2:2012	>20 Nm IR 20
	Determination of the surface hardness 1* UNE EN 13813:2014	UNI EN 13892-6:2003	>180 N/mm ² (SH 180)
	Determination of compressive strength UNE EN 13813:2014	UNI EN 13892-2:2005	>50 N\mm ² Class C50
	Determination of abrasion resistance BCA 1* UNE EN 13813:2014	UNI EN 13892-4:2003	Class: AR 0,5 (max 50 µm)
	Depth of water penetration under pressure 1* UNE EN 14891:2017	UNI EN 12390-8:2020	5 bares – 3 days Direct pressure: No penetration Indirect pressure: No humidity
	Determination of slip resistance Technical building code	UNE EN 12633:2003	Value (USRV): 41 Class 2
	Permeability to liquid water UNE EN 1504:2005	UNE EN ISO 1062-3:2008	<0.1kg / (m ² *h ^{0.5})
	Resistance to severe chemical attack UNE EN 1504:2005	UNI EN 13529:2005	Class: II 28 Days without pressure
	Determination of the transmission properties of water vapors UNE EN 1504:2005	UNE EN ISO 7783-2:2012	Class: 1 Sd<5 m For applications such as those described in the data sheet

1* = Without sealer

TECHNICAL DATASHEET

Microne / Microne Plus

Microne® Fine
Microne® Medium
Microne® Base
Microne® Plus Fine
Microne® Plus Medium
Microne® Plus Base



UNE - EN 13813



PU VARNISH SPECIFICATION













AQUAPUR 70 - COLORLESS WATER-BASED RESIN VARNISH

Aquapur 70® Colorless varnish formulated with water-based resins for an exceptionally hard finish and excellent water resistance.

It is the only water-based polyurethane with maximum durability and high solids content (65%, more than other water-based polyurethanes) - special characteristics that provide unmatched resistance to stains, both chemical and those produced by traffic and household pollutants that are difficult to clean on other polyurethane coatings.

Moreover, the high solids content ensures superior waterproofing, sealing absorbent substrates with greater efficiency and enhancing the water resistance of all types of surfaces. The increased ratio of hardener (40%) to component A provides exceptional hardness without reducing the working time with the mixture: more than 2 hours of pot-life.

AQUAPUR 70 TECHNICAL SPECIFICATIONS

		STANDARD	RESULT
	Determination of emissions into indoor air UNE EN 16516:2018	UNI EN ISO 16000-6:2019	A+
	Thermal compatibility (Freeze and thaw cycling) UNE EN 1504-2:2 2005	UNI EN 13687-5	>3,5 MPa No bubbles, cracks
	Artificial weathering UNE EN 1504-2:2 2005	UNI EN ISO 16474-1:2014	Without change 2000 h
	Adhesion Strength by pull-off test UNE EN 1504-2:2 2005	UNI EN 1542	4,5 MPa
	Impact resistance UNE EN 13813:2014	UNI EN 6272-2:2012	Class III
	Shore Hardness UNE EN 1504-2:2 2005	UNI EN ISO -868	80 D
	UV Resistance rays (PU Alifatic) UNE EN 1504-2:2 2005	UNI EN ISO 1134	$\Delta L = -1,9$; $\Delta E = 2,8$ (200 Cycles)
	Determination of abrasion resistance Taber-CS17 / 1000g:1000rpm UNE EN 1504-2:2 2005	UNI EN 5470-2	Thick (100 μ) Loss (22 mg)
	Cooling Cycles resistance UNE EN 1504-2:2 2005	UNI EN 48025:1979	Pass 20
	Permeability to liquid water UNE EN 1504:2005	UNE EN ISO 1062-3:2008	$W < 0.1 \text{ Kg} / (\text{Kg./m}^2 \cdot \text{h}^{0.5})$
	Resistance to severe chemical attack UNE EN 1504:2005	UNI EN 13529:2005	Class: III No alteration and no reduction in hardness.
	Determination of the transmission properties of water vapors UNE EN 1504:2005	UNE EN ISO 7783-2:2012	Clase: 1 Sd<5 m No alteration and no reduction in hardness.

HOUSEHOLD RESISTANCES (ASTM D 1308 TOP COVERED)

Time	Ketchup	Coffee	Water	Mustard	Caustic soda	10% Bleach	24% Salfuman
1 hour	Not affected	Not affected	Not affected	Not affected	Not affected	Not affected	Not affected
4 hours	Not affected	Not affected	Not affected	Slight change	Not affected	Not affected	Not affected
24 hours	Not affected	Not affected	Not affected	Slight change without loss of hardness	Not affected	Not affected	Not affected

CHEMICAL PHYSICAL CHARACTERISTICS PERSOZ HARDNESS (20°)

Product	24 hours	48 hours	7 days	30 days	Total
Aquapur 70®	120"	260"	300"	370"	370"

TECHNICAL DATASHEET

Aquapur 70

Aquapur 70® Comp A
Aquapur 70® Comp B



Color

24 standard coloured for microcement systems. Tailor-Made Colours upon request



Branco



Bone



Terra



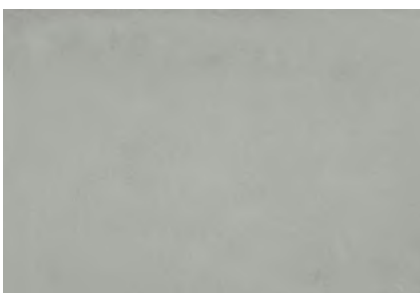
Perla



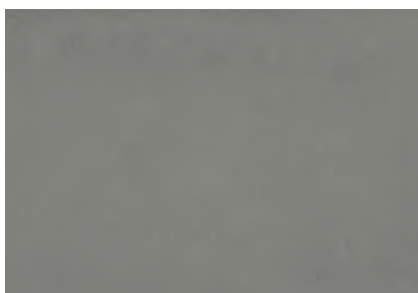
Magnetic



Dark



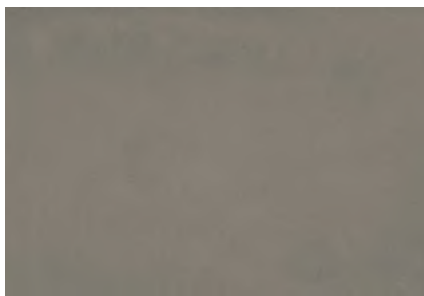
Hakuba



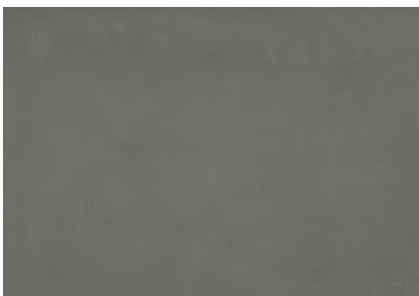
Xenon Grey



Onyx



Mountain



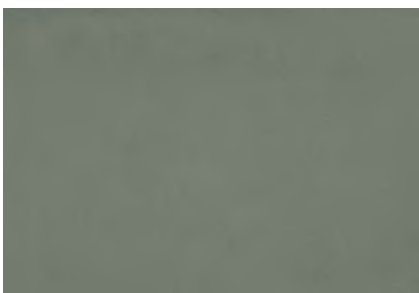
Cement



Pizarra



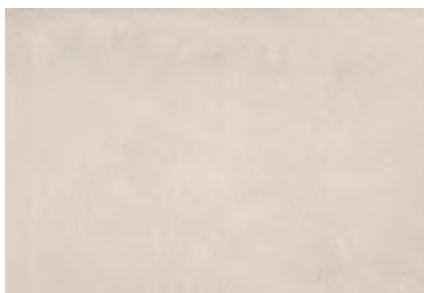
Topo



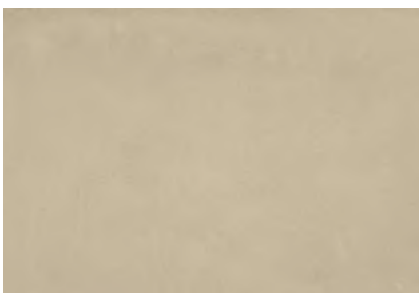
Amazonia



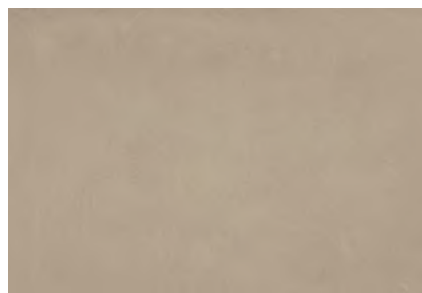
Militaire



Cream



Latte



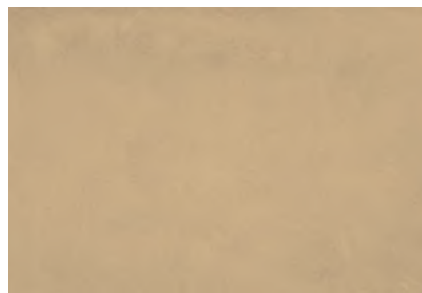
Coffee



Fossile



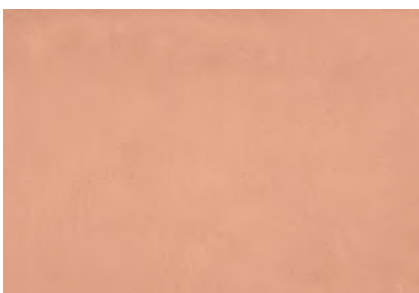
Mojave



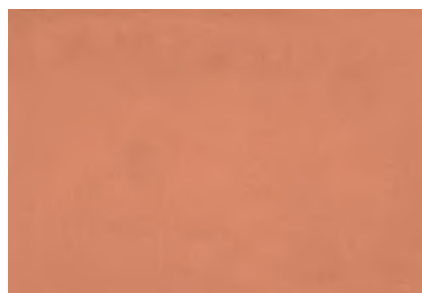
Africa



Golden Sand



Reef



Terracota

SUBTLE CONTINUOUS

Gloss Type: Matt
Color: Bone & Dark

Bone: Homogeneous finish, without stucco effect (No cloudy effect).

Dark: Slight stucco effect, is much more subtle than that of the traditional finish.



SUBTLE CONTINUOUS

Gloss Type: Matt
Color: Bone



Homogeneous finish, without
stucco effect (No cloudy effect)

SUBTLE CONTINUOUS

Gloss Type: Matt
Color: Terra

Homogeneous finish, without
stucco effect (No cloudy effect).





SUBTLE CONTINUOUS

Homogeneous finish, without
stucco effect (No cloudy effect)

Gloss Type: Shiny Matt
Color: Branco

SUBTLE CONTINUOUS

Gloss Type: Shiny Matt
Color: Branco

Homogeneous finish, without
stucco effect (No cloudy effect)



SUBTLE CONTINUOUS

Gloss Type: Matt
Color: Perla

Homogeneous finish, without
stucco effect (No cloudy effect)



SUBTLE CONTINUOUS

Gloss Type: Shiny Matt
Color: Perla

Homogeneous finish, without
stucco effect (No cloudy effect)



SUBTLE CONTINUOUS

Homogeneous finish, without
stucco effect (No cloudy effect)

Gloss Type: Shiny Matt
Color: Cream



COARSE

Gloss Type: Matt
Color: Latte

Coarse finish is characterized by its hardness. Excellent performance in high traffic areas (shopping malls, public buildings, workplaces or residential spaces, whether indoors or outdoors).



COARSE

Gloss Type: Matt



Coarse finish is characterized by its hardness. Excellent performance in high traffic areas (shopping malls, public buildings, workplaces or residential spaces, whether indoors or outdoors).





COARSE

Gloss Type: Shiny Matt
Color: Chocolate

Coarse finish is characterized by its hardness. Excellent performance in high traffic areas (shopping malls, public buildings, workplaces or residential spaces, whether indoors or outdoors).



COARSE

Gloss Type: Shiny Matt

Color: Golden Sand

Coarse finish is characterized by its hardness. Excellent performance in high traffic areas (shopping malls, public buildings, workplaces or residential spaces, whether indoors or outdoors).



STUCCO CLOUDY

Gloss Type: Matt

Color: Black (Floor)

Color: Terra & Cream (Wall)

Stucco effect (cloudy effect).
The intensity of the stucco can
be enhanced or attenuated
during application, thus
creating an elegant
handcrafted profile that makes
each project unique.





STUCCO CLOUDY

Gloss Type: Matt
Color: Bone & Perla (mix)

Stucco effect (cloudy effect). The intensity of the stucco can be enhanced or attenuated during application, thus creating an elegant handcrafted profile that makes each project unique.

STUCCO CLOUDY

Gloss Type: Matt
Color: Xenon Grey

Stucco effect (cloudy effect). The intensity of the stucco can be enhanced or attenuated during application, thus creating an elegant handcrafted profile that makes each project unique.





STUCCO CLOUDY

Stucco effect (cloudy effect). The intensity of the stucco can be enhanced or attenuated during application, thus creating an elegant handcrafted profile that makes each project unique.

Gloss Type: Shiny Matt. Color: Mojave





LUCIR

STUCCO CLOUDY

Gloss Type: Shiny Matt
Color: Xenon Grey & Perla

Stucco effect (cloudy effect). The intensity of the stucco can be enhanced or attenuated during application, thus creating an elegant handcrafted profile that makes each project unique.





STUCCO CLOUDY

Gloss Type: Shiny Matt
Color: Coffee

Stucco effect (cloudy effect). The intensity of the stucco can be enhanced or attenuated during application, thus creating an elegant handcrafted profile that makes each project unique.

STUCCO CLOUDY

Gloss Type: Shiny Matt
Color: Xenon Grey & Perla (mix)

Stucco (cloudy) effect, the intensity of the stucco can be enhanced or attenuated during application, thus creating an elegant handcrafted profile that makes each project unique.



STUCCO CLOUDY

Gloss Type: Shiny Matt
Color: Fossile & Latte

Stucco effect (cloudy effect). The intensity of the stucco can be enhanced or attenuated during application, thus creating an elegant handcrafted profile that makes each project unique.



STRONG STUCCO BURNT DARK

Gloss Type: Matt
Color: Xenon Grey & Hakuba (mix)

Stucco effect with “Burnt Dark”. The intensity of the stucco can be enhanced or attenuated during application, thus creating an elegant handcrafted profile that makes each project unique.



STRONG STUCCO BURNT DARK

Gloss Type: Matt

Color: Xenon Grey & Hakuba (mix)

Stucco effect with “Burnt Dark”. The intensity of the stucco can be enhanced or attenuated during application, thus creating an elegant handcrafted profile that makes each project unique.



kilnher group®

C/ Llanterners 44, Pol. Ind. La Figuera
46970 Alacuás, Valencia SPAIN
+ 34 96 150 50 24 | info@cemher.com | www.cemher.com