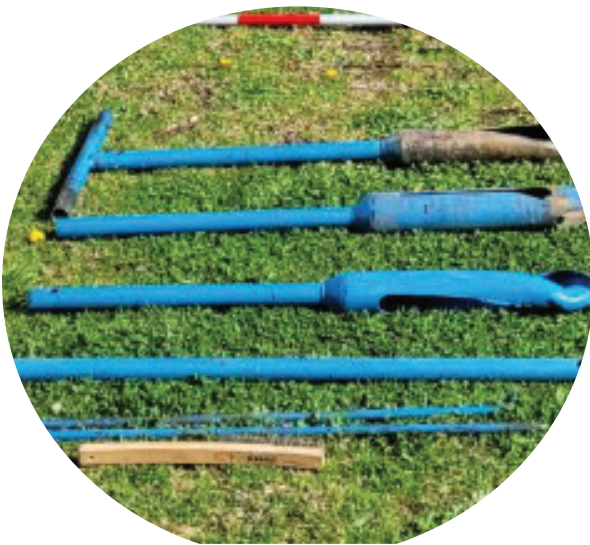


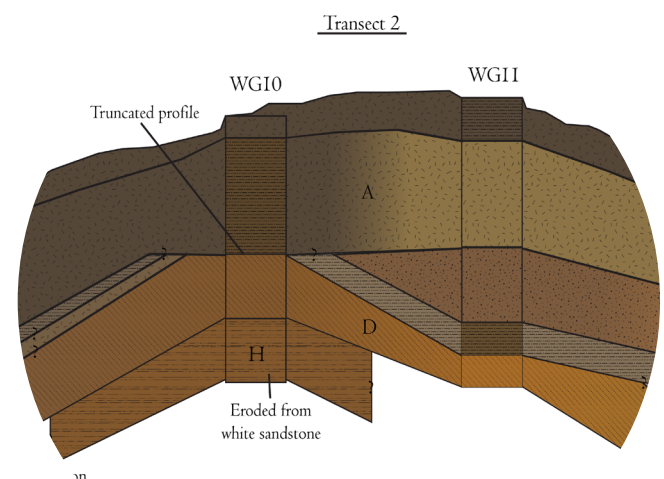
By examining the soils and sediments of a site, we can understand the contents before placing a shovel!



We do this by utilising low-impact boreholes; either by hand or using machinery.



The raw data is converted into easy-to-read figures and plans that assist in determining future works.



A2 acting as A1 (buried) C. A3 acting as A2 (buried) D. B-h
PDSB) F. Buried topsoil G. Buried A-horizon H. C

35 40

The understanding of the ground will help assist in determining the archaeological potential of a study area, reducing the workload of any planned works as well as preserving the cultural heritage.