

Infusion Confusion for Beginners

Lori Cox, MBA, CPC, CPMA, CPC-I, CEMC, CGSC, CHONC
Director of Client Engagement – AAPC Audit Services



Webinars

BY AAPC

Copyright © 2024 AAPC

1

Agenda



- 1** Common Infusion Technology
- 2** Infusion Codes
- 3** Infusion Coding
- 4** Case Examples

2

1

Common Infusion Terminology

3

Diagnoses Definitions



- **Neoplasm** – [neo=new, plasm=formation] An abnormal and uncontrolled growth of cells. Neoplasms can be either benign or malignant.
 - 1. Benign Neoplasm:** Benign neoplasms are non-cancerous growths of cells. They tend to grow slowly and remain localized, which means they do not invade nearby tissues or spread to distant parts of the body.
 - 2. Malignant Neoplasm (Cancer):** Malignant neoplasms are cancerous growths. These abnormal cells grow rapidly, invade nearby tissues, and can metastasize, spreading to other parts of the body via the bloodstream or lymphatic system.

4

Diagnosis Abbreviations



- **CA** – cancer
- **LCIS** – **Lobular Carcinoma in Situ** non-invasive breast condition characterized by abnormal cell growth in the lobules of the breast, and it is not considered a form of breast cancer but is associated with an increased risk of developing invasive breast cancer.
- **NSCLC** – **Non-small cell lung cancer** - type of lung cancer that typically grows and spreads more slowly than small cell lung cancer and accounts for the majority of lung cancer cases.
- **AML/CML** – **Acute or Chronic Myeloid Leukemia** [leuk=white; -emia=blood condition]. Blood cancer that originates in the bone marrow

5

Diagnoses Definitions



- **Neutropenia** - A condition characterized by a low level of white blood cells, which can increase the risk of infection.
- **Thrombocytopenia** - A condition marked by a low platelet count, which can lead to bleeding and bruising.
- **Alopecia** - Hair loss
- **Mucositis** - Inflammation and sores in the mucous membranes of the mouth and throat
- **GVHD (Graft vs. Host Disease)** - transplanted immune cells attack the recipient's tissues and organs, often occurring after bone marrow or stem cell transplantation.

6

Infusion Terms



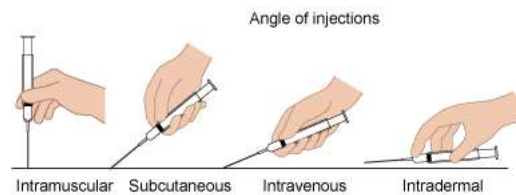
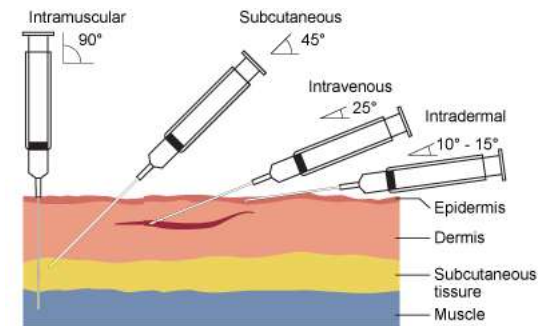
- Infusion – Delivery of any type of drug into the bloodstream through a vessel.
- Chemotherapy – Use of drugs to kill or inhibit neoplastic cells
- Initial – The primary **reason** for the encounter (**NOT the first drug given!**)
- Concurrent – Drug given at the same time
- Sequential – New drug, different time
- Additional – Same drug, different time
- Push – rapid injection of a medication

7

Routes of Administration



- Subcutaneous - SQ
- Intramuscular - IM
- Intravenous Infusion - IV
- Intra-arterial push - IAP
- Intravenous push – IVP
- Intravenous piggyback – IVPB
- Continuous IV – CIV
- Port – Semi-perm device



8

2

Infusion Codes

9

What is included?

- Use of local anesthesia
- IV start
- Access to port
- Flush at conclusion
- Standard supplies (Not Drugs)



10

CPT Infusion Categories



Category	Codes
Hydration Infusion	96360-96361
Therapeutic, Prophylactic, and Diagnostic Injections and Infusions (Excludes Chemotherapy and Other Highly Complex Drug or Highly Complex Biologic Agent Administration)	96365-96379
Chemotherapy Administration and Other Highly Complex Drug or Highly Complex Biologic Agent Administration	96401-96549

11

Hydration



Administer pre-packaged fluids such as:

- ~Normal Saline (NS)
- ~D5-1/2 normal saline+30mEq KCL/liter

2 codes:

- ~96360 – Intravenous infusion, hydration; initial, 31 minutes to 1 hour
- ~96361 – Intravenous infusion, hydration; each additional hour

12

CPT Hydration Guidelines



- Require direct supervision
- No special handling of drugs & supplies
- Staff does not require specialized training to
- Little patient risk and monitoring during infusion



13

Hydration Admin Coding



Do NOT bill hydration if:

- Any drugs are added to the solution
- If the length of infusion is less than 31 minutes
- If hydration is given at the same time (concurrent) as another drug.
- If used to just keep an IV line open.

14

Separate Hydration



Bill hydration separately when:

- ✓ Performed at a different session on the same date.
- ✓ When performed before or after a drug infusion.

Use Modifier 59 to show separately identifiable.

15

Hydration Drugs



Common HCPCS codes billed along with hydration are:

- J7030 – Infusion, normal saline solution, 1000cc
- J7040 – Infusion, normal saline solution, sterile, 500ml=1 unit
- J7050 – Infusion, normal saline solution, 250cc
- J7070 – Infusion, D5W, 1000cc
- J7120 – Ringer's lactate up to 1000cc

16

Hydration Drug Coding



Per NCCI Chapter 11 Section B.5

If the sole purpose of fluid administration (e.g., saline, D5W, etc.) is to maintain patency of an access device, the infusion is neither diagnostic nor therapeutic and shall not be reported separately. **Similarly, the fluid used to administer drug(s)/substance(s) is incidental hydration and shall not be reported separately.**

17

Therapeutic, Prophylactic, Diagnostic (TPD) Infusions



96365 – **Intravenous** infusion, for therapy, prophylaxis, or diagnosis; initial, up to 1 hour.

+96366 each additional hour

+96367 additional sequential infusion of a new drug, up to 1 hour

+96368 concurrent infusion

96369 – **Subcutaneous** infusion for therapy or prophylaxis; initial, up to 1 hour

+96370 each additional hour

18

TPD Injection Codes



96372 – *TPD injection; subcutaneous or intramuscular*

96373 – *TPD injection; intra-arterial*

96374 – *TPD injection; IVP, single or initial drug*

+96375 each additional sequential IVP of a new drug

*+96376 each additional sequential IVP of the same drug
provided in a facility*

96377 – *Application of on-body injector*

19

TPD Guidelines



- Require direct supervision
- Requires special consideration to prepare, dose, dispense
- Staff training and competency
- Periodic vitals and assessment during infusion

20

Common HCPCS TPD codes



- J1200 – Benadryl, up to 50mg
- J1100 – Decadron, per 1 mg
- J2469 – Aloxi, 25 mcg
- J0881 – Aranesp, 1 mcg, non-ESRD
- J0882 – Aranesp, 1 mcg, ESRD
- J3489 – Zometa, 1mg
- J2405 – Zofran, 1mg



21

Chemotherapy Infusion Section 1



Injection and Intravenous Infusion

96401- *Chemo Administration, SQ or IM; non-hormonal anti- neoplastic*

96402 – *Chemo Admin, SQ or IM; hormonal anti-neoplastic*

96405 – *Chemo Admin; intralesional up to 7 lesions*

96406 – *Chemo Admin; intralesional, more than 7 lesions*

96409 – *Chemo Admin; IVP, single drug*

+96411 – *IVP, each additional drug*

22

Chemotherapy Infusion Section 1 cont.



Injection and Intravenous Infusion

96413 – Chemo admin, IV, up to 1 hour, initial drug

+96415 – each additional hour

96416 – *Initiation of prolonged chemo (more than 8 hours) requiring use of a portable or implantable pump*

+96417 – each additional sequential infusion
(different drug), up to 1 hour.



23

Chemotherapy Infusion Section 2



Intra-Arterial

96420 – *Chemo Admin, intra-arterial; push technique*

96422 – *Chemo Admin, intra-arterial; infusion technique*

+96423 each additional hour

96425 – *initiation of prolonged infusion (more than 8 hours),
requiring the use of a portable or implantable pump*

24

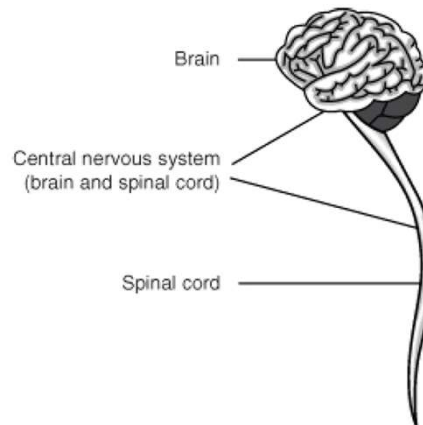
Chemotherapy Infusion Section 3



Other

- 96440 – *Chemo admin into pleural cavity*
- 96446 – *Chemo admin into peritoneal cavity*
- 96450 – *Chemo admin into CNS (intrathecal)*

96542 – *Chemo injection, subarachnoid or intraventricular via SQ reservoir*



25

Chemotherapy Infusion Section 3 cont.



- 96521 – *Refilling and maintenance of portable pump*
- 96522 – *Refilling and maintenance of implantable pump*
- 96523 – *Irrigation of implanted venous access device*

26

Common Chemo Drugs



- J9311 – Rituximab
- J9305 – Alimta
- J9035 – Avastin
- J9041 – Velcade
- J9190 – Fluorouracil (5 FU)
- J9263 – Oxaliplatin
- J9201 - Gemzar

J9201

Injection, gemcitabine hydrochloride, not otherwise specified, 200 mg

[Details](#)
[Fees](#)
[ICD-10-CM X](#)
[Modifier X](#)
[MCR NCCI-Edits](#)
[MCD NCCI-Edits](#)
[CPT X](#)
[Medically Unlikely Edits](#)

27

3

Infusion Coding

28

Initial Drug Administration

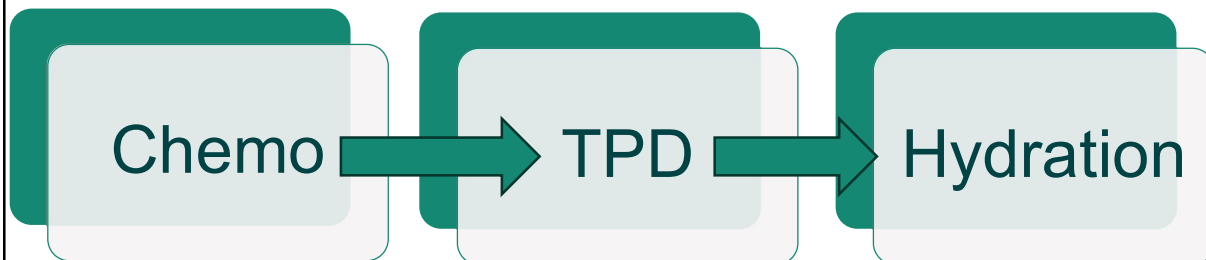


Initial-

- ❖ This best describes the key or primary reason for the encounter and should be reported irrespective of the order in which the infusions or injections occur.
- ❖ **Only use 1 Initial Code!!!**

29

Drug Hierarchy



30

Initial Administration Codes



- **96413** *Chemotherapy administration, intravenous infusion technique; up to 1 hour, single or initial substance/drug*
- 96409 *Chemo admin; IV push, initial drug*
- 96365 *IV infusion, for TPD; initial*
- 96369 *SQ infusion for TPD, initial*
- 96374 *IV push, TPD, initial*
- 96360 *hydration*

**ONLY USE
ONE OF
THESE
CODES PER
ENCOUNTER!**

31

Additional Time for IV Infusions



- +96415 – *Chemo IV infusion, each additional hour*
- +96366 – *TPD IV infusion, each additional hour*
- +96370 – *TPD SQ infusion, each additional hour*
- +96361 – *hydration, each additional hour*



32

Riddle Me This!



When does one hour not equal 60 minutes?

When coding infusions!



33

CPT Time Rules



1. Must use the actual time the drug was infused.
Start and stop times must be documented.
2. A unit of time is attained when the mid-point is passed.
An hour is attained when 31 minutes have passed.
The next hour is attained when 91 minutes has passed
3. An infusion that lasts less than 16 minutes is coded as a push.

34

Chemo Infusion Timing



- 96413 – 16-90 minutes
- 96415 each additional 60 minutes, BUT not less than 31
 - (Report 96415 for infusion intervals of greater than 30 minutes beyond 1 hour intervals.)
 - Therefore, 96415 cannot be used until 91 minutes is reached

Begin	End	Code/Units
16	90	96413
91	150	96413, 96415x1
151	210	96413, 96415x2

35

TPD Infusion Timing



- 96365 – 16-90 minutes
- 96366 each additional 60 minutes, BUT not less than 31
 - (Report 96366 for infusion intervals of greater than 30 minutes beyond 1 hour intervals.)
 - Therefore, 96366 cannot be used until 91 minutes is reached

Begin	End	Code/Units
16	90	96365
91	150	96365, 96366x1
151	210	96365, 96366x2

36

Hydration Timing



96360 – 31-90 minutes

96361 – each additional 60 minutes, BUT not less than 31

(Report 96361 for hydration infusion intervals of greater than 30 minutes beyond 1 hour increments.)

Begin	End	Code/Units
31	90	96360
91	150	96360, 96361x1
151	210	96360, 96361x2

37

Hydration with Chemo or TPD



- 96413 – initial chemo drug given
- 96361 – add hydration 31-90 minutes
 - (Report 96361 to identify hydration if provided as a secondary or subsequent service after a different initial service [96360, 96365, 96374, 96409, 96413] is administered through the same IV access.)

96361 HYDRATION ADD-ON, DRUGS GIVEN AT SAME ENCOUNTER		
Begin	End	Units
30 minutes or less	Not allowed	
31	90	1
91	150	2
151	210	3

38

Sequential Infusions and Pushes



- 96417 – chemo additional sequential infusion
- 96411 – IV push, each additional drug
- 96367 – TPD additional sequential infusion
- 96375 – TPD push, additional drug
- 96376 – TPD push, same drug, next time(s)

39

Concurrent Infusion



- 96368 – concurrent infusion
(report 96368 only once per date of service)
(Report 96368 in conjunction with 96365, 96366, 96413, 96415, 96416)

For any drug, even chemo

9:30-11:30 (120 minutes) 2 chemo drugs are infused at same site

96413, 96415 for first drug

96368 for second drug

40

Overlapping Pushes



- 96374 – initial drug push

OR

- 96375 x1 – sequential push

Cannot bill both 96374 and 96375: each additional **sequential** push

The term "sequential" refers to something that occurs in a specific order or sequence, where each element or event follows the one before it.

41

CIV



- 96371 – additional pump set-up, SQ infusion new site
 - Use with 96369 (SQ initial infusion)
- 96416 – initiation of prolonged chemo (more than 8 hours) with pump
 - Not an add-on code but is billable with other services

42

JZ & JW Modifiers



- JZ – entire single dose vial given
- JW – amount discarded

Must use one or the other on SDV for Medicare patients in the Part B setting.

43

4

Case Examples

44

Hydration Example



Patient presents with acute gastroenteritis with dehydration. Provider orders 1000cc NS and optional Zofran if the patient's nausea continues.

Staff Notes:

IV start right antecubital. Normal Saline 1000cc given. Start time: 11:07. Stop time 13:10. ~R. Smith RN

11:07-13:10 = 123
minutes
96360, 96361
J7030 x1

Begin	End	Code/Units
31	90	96360
91	150	96360, 96361x1
151	210	96360, 96361x2

45

TPD Example



Patient presents with acute gastroenteritis with dehydration. Provider orders 1000cc NS and optional Zofran if the patient's nausea continues.

Staff Notes:

IV start right antecubital. Normal Saline 1000cc given. Start time: 11:07. Stop time 13:10. At 12:01 patient complains of severe nausea. 8mg Zofran given IVP: start time 12:03. Stop time 12:13 ~R. Smith RN

11:07-13:10 = 123 minutes hydration
12:03-12:13 = 10 minutes Zofran

96374, 96361x2
J2405 x8, J7030 x1

96361 HYDRATION ADD-ON, DRUGS GIVEN AT SAME ENCOUNTER		
Begin	End	Units
30 minutes or less	Not allowed	
31	90	1
91	150	2
151	210	3

46

TPD Example



Patient presents with alteration of mental status with dysuria and incontinence. Physician diagnosis is UTI. Orders ceftriaxone 1000mg to be given over 30 minutes.

MAR:

Ceftriaxone 1000mg rt hand. 15:37-16:10.

Lactate Ringers 1000cc rt hand. 15:35-16:10.

15:37-16:10 = 33 minutes

96365

J0696 x4

Begin	End	Code/Units
16	90	96365
91	150	96365, 96366x1
151	210	96365, 96366x2

47

Chemo Example



Diagnosis: Colon CA

<u>Medication</u>	<u>Dosage</u>	<u>Route</u>	<u>Start Time</u>	<u>End Time</u>
Fluorouracil	4000mg	CIV	12:55pm	12:56pm
D5W	550mL	IV	10:30am	1:55pm
Oxaliplatin	145mg	IV	10:50am	12:40pm
Dexamethasone	10mg	IVPB	10:30am	10:50am
Aloxi	.25mg	IVPB	10:30AM	10:50AM

48

Chemotherapy Treatment

Medication	Dosage	Route	Start Time	End Time
Fluorouracil J9190 [500mg]	4000mg	CIV	12:55pm	12:56pm
D5W	550mL	IV	10:30am	1:55pm
Oxaliplatin J9263 [.5mg]	145mg	IV	10:50am	12:40pm
Dexamethasone J1100 [1mg]	10mg	IVPB	10:30am	10:50am
Aloxi J2469 [25mcg]	.25mg	IVPB	10:30AM	10:50AM

Diagnosis: Colon CA

49

Chemotherapy Treatment

Medication	Dosage	Route	Start Time	End Time
Oxaliplatin J9263 [.5mg]	145mg	IV	10:50am	12:40pm

10-50-12:40 =
110 minutes

96413, 96415

Chemo	
16-90	96413
91-150	+96415
151-210	+96415 x2
211-270	+96415 x3
271-330	+96415 x4

145 ÷ .5 = 290

J9263 X 290

50

Claim Form



D. PROCEDURES, SERVICES, OR SUPPLIES (Explain Unusual Circumstances) CPT/HCPCS		E. DIAGNOSIS POINTER		F. \$ CHARGES	G. DAYS OR UNITS
96413					
96415					
J9263					290

51

Chemotherapy Treatment



<u>Medication</u>	<u>Dosage</u>	<u>Route</u>	<u>Start Time</u>	<u>End Time</u>
Fluorouracil J9190 [500mg]	4000mg	CIV	12:55pm	12:56pm

$$4000 \div 500 = 8$$

96416

J9190 x8

52

Claim Form



D. PROCEDURES, SERVICES, OR SUPPLIES (Explain Unusual Circumstances)					E. DIAGNOSIS POINTER	F. \$ CHARGES	G. DAYS OR UNITS
CPT/HCPCS	MODIFIER						
96413							
96415							
96416							
J9263							290
J9190							8

53

Chemotherapy Treatment



<u>Medication</u>	<u>Dosage</u>	<u>Route</u>	<u>Start Time</u>	<u>End Time</u>
Dexamethasone J1100 [1mg]	10mg	IVPB	10:30am	10:50am
Aloxi J2469 [25mcg]	.25mg	IVPB	10:30AM	10:50AM

96365 Intravenous infusion, for therapy, prophylaxis, or diagnosis (specify substance or drug), initial, up to 1 hour

54

Chemotherapy Treatment



<u>Medication</u>	<u>Dosage</u>	<u>Route</u>	<u>Start Time</u>	<u>End Time</u>
Dexamethasone J1100 [1mg]	10mg	IVPB	10:30am	10:50am
Aloxi J2469 [25mcg]	.25mg	IVPB	10:30AM	10:50AM

96367

Intravenous infusion, for therapy, prophylaxis, or diagnosis (specify substance or drug); additional sequential infusion of a new drug/substance, up to 1 hour (List separately in addition to code for primary procedure)

Notes:

(Report 96367 in conjunction with 96365, 96374, 96409, 96413 to identify the infusion of a new drug/substance provided as a secondary or subsequent service after a different initial service is administered through the same IV access.)

55

Claim Form



D. PROCEDURES, SERVICES, OR SUPPLIES (Explain Unusual Circumstances)					E. DIAGNOSIS POINTER	F. \$ CHARGES	G. DAYS OR UNITS
CPT/HCPCS	MODIFIER						
96413							
96415							
96416							
96367							
J9263							290
J9190							8
J1100							10
J2469							10

56

Diagnoses



- Start with chief complaint
- Stay away from Z51.12 as primary on the E/M – use on infusions
- Use cancer diagnosis
- Can use Z01.818 – pre-procedural exam, if making decision
- Side effects, co-morbidities, etc.

57

Practice Makes
Perfect



58

Questions...

