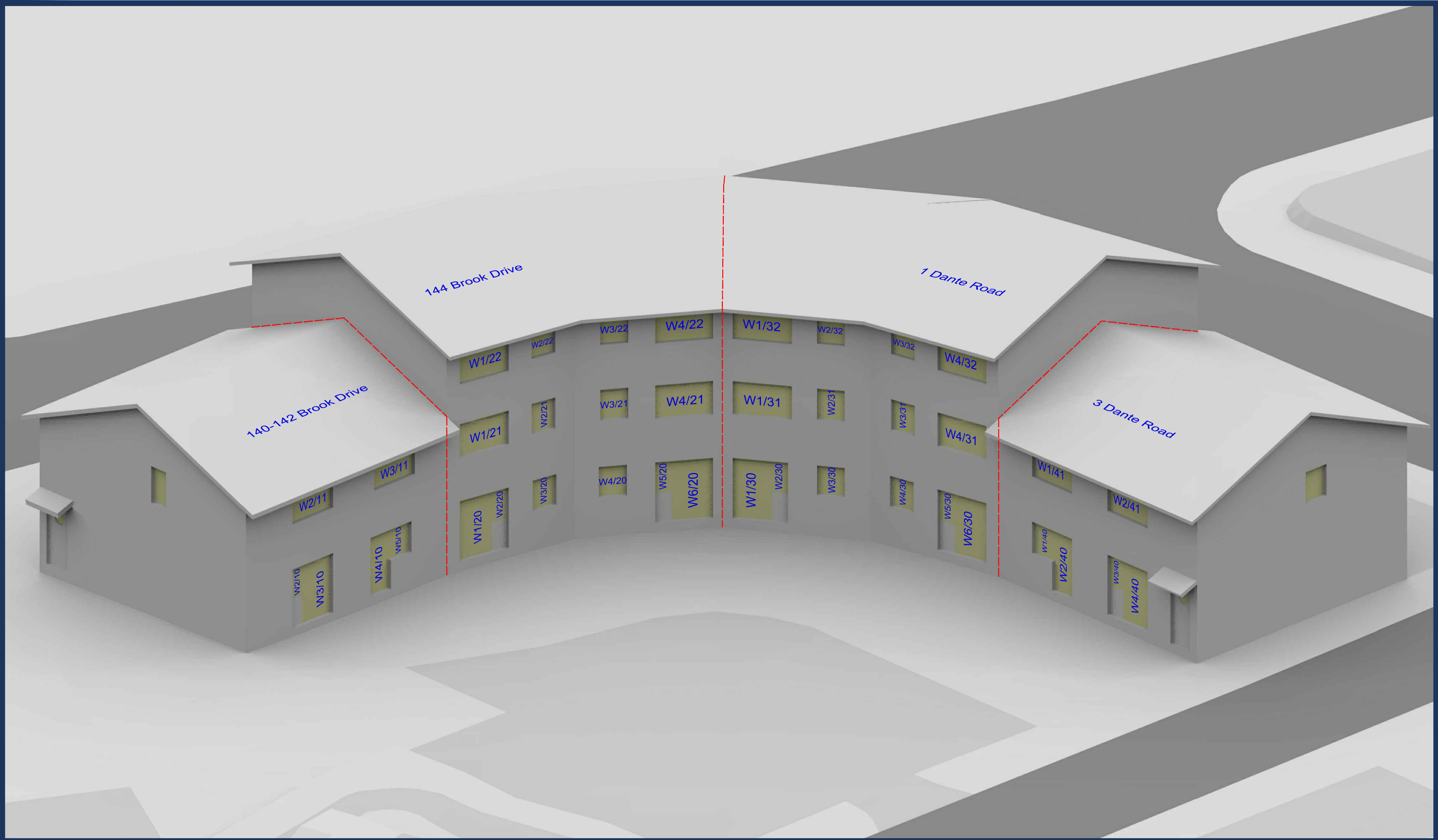


## Appendix 12 – Window Maps A3 size



Sources: Point2Surveyors  
 Scan data (received 13/08/18)  
 Woodlands and Masters.rcp  
 Site Photos (received 20/08/18)  
 Rolfe Judd  
 Proposed Info (received 25/03/19)  
 190325-6057-Massing.skp  
 Proposed Info (received 08/03/19)  
 6057 - Options Appraisal - Option 01A.skp  
 Proposed Info (received 28/11/18)  
 6057-Geo Located Massing.dwg

Key:

Scheme Confirmed: -

Date: -

Project: Woodlands and Masters House, London

Drawn By: JG/BZW

Scale: NTS @ A3

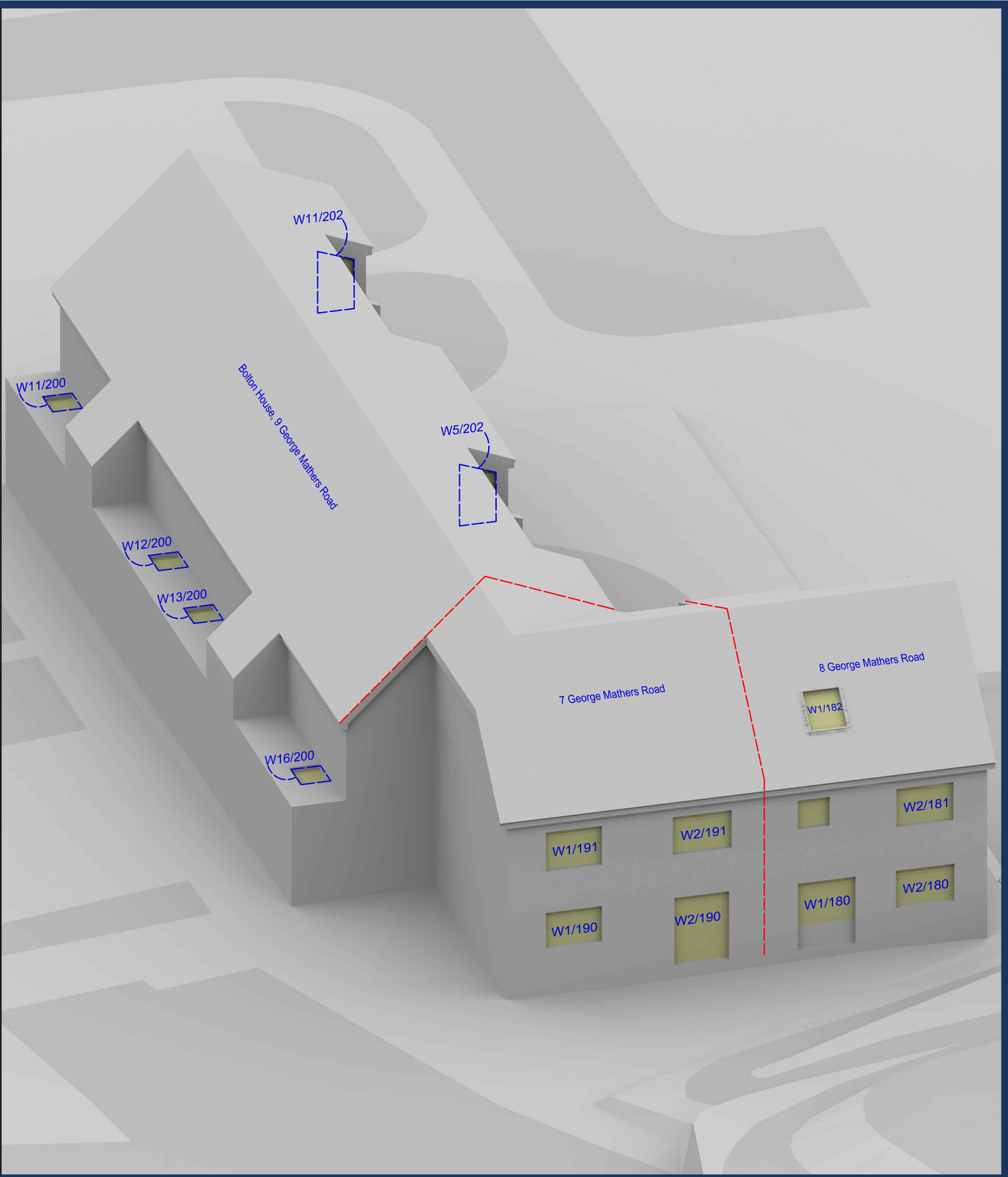
Date: JUL 19

Title: Window Locations  
 140-142 Brook Drive, 144 Brook Drive, 1 Dante Road, 3 Dante Road

Dwg No: P1870\_WM\_01

Rel: 14





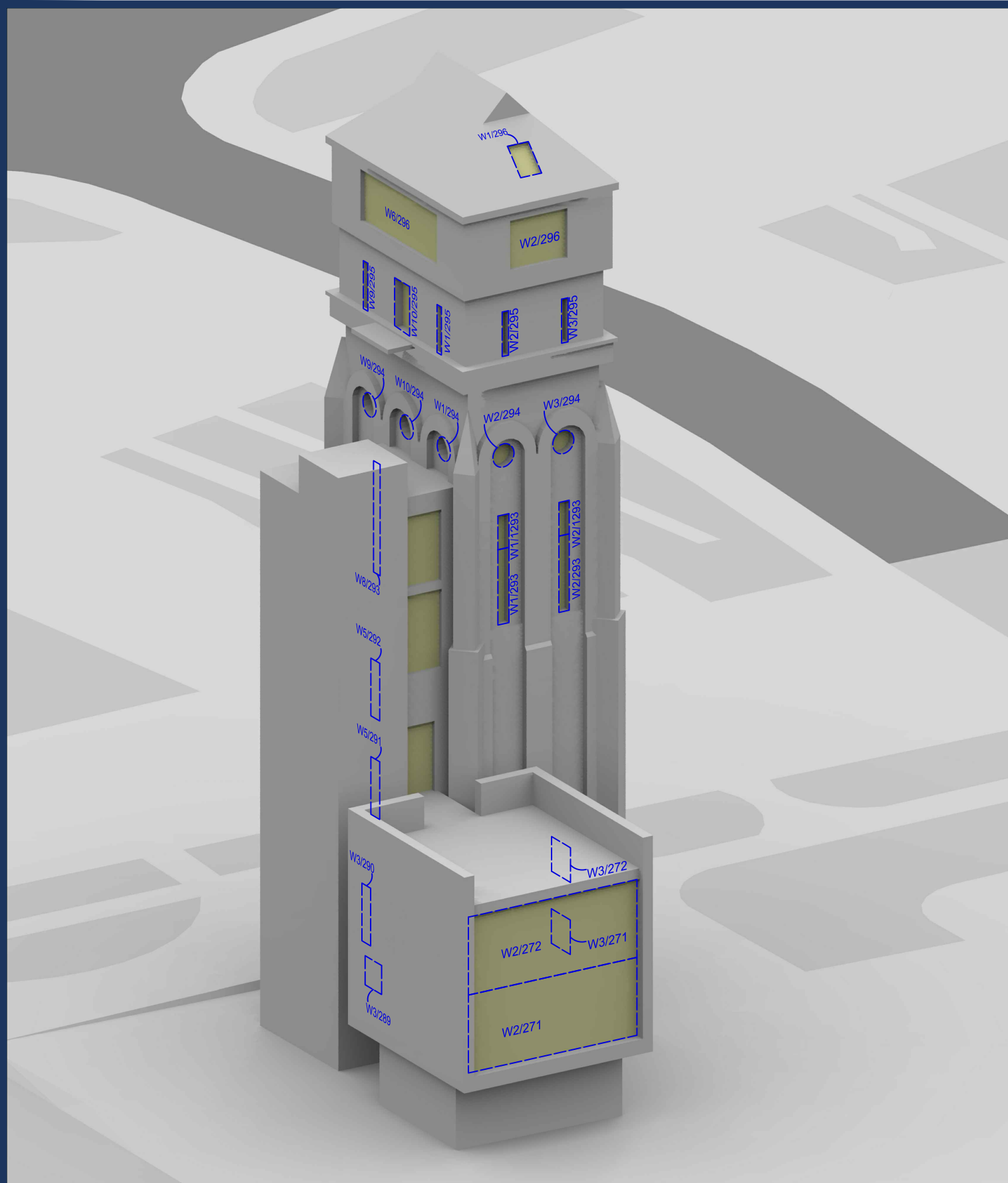
Sources: Point2Surveyors  
 Scan data (received 13/08/18)  
 Woodlands and Masters.rcp  
 Site Photos (received 20/08/18)  
 Rolfe Judd  
 Proposed Info (received 25/03/19)  
 190325-6057-Massing.skp  
 Proposed Info (received 08/03/19)  
 6057 - Options Appraisal - Option 01A.skp  
 Proposed Info (received 28/11/18)  
 6057-Geo Located Massing.dwg

Key:  
 Scheme Confirmed: -  
 Date: -

Project: Woodlands and Masters House, London  
 Drawn By: BZW/CJ  
 Scale: NTS @ A3  
 Date: OCT 20

Title: Window Locations  
 8 George Mathers Road, 7 George Mathers Road, Bolton House (9 George Mathers Road)  
 Dwg No: P1870\_WM\_02  
 Rel: 20





Sources: Point2Surveyors  
 Scan data (received 13/08/18)  
 Woodlands and Masters.rcp

Site Photos (received 20/08/18)

Rolfe Judd  
 Proposed Info (received 25/03/19)  
 190325-6057-Massing.skp  
 Proposed Info (received 08/03/19)  
 6057 - Options Appraisal - Option 01A.skp  
 Proposed Info (received 28/11/18)  
 6057-Geo Located Massing.dwg

Key:

Scheme Confirmed: -

Date: -

Project: Woodlands and Masters House, London

Drawn By: JG/BZW

Scale: NTS @ A3

Date: JUL 19

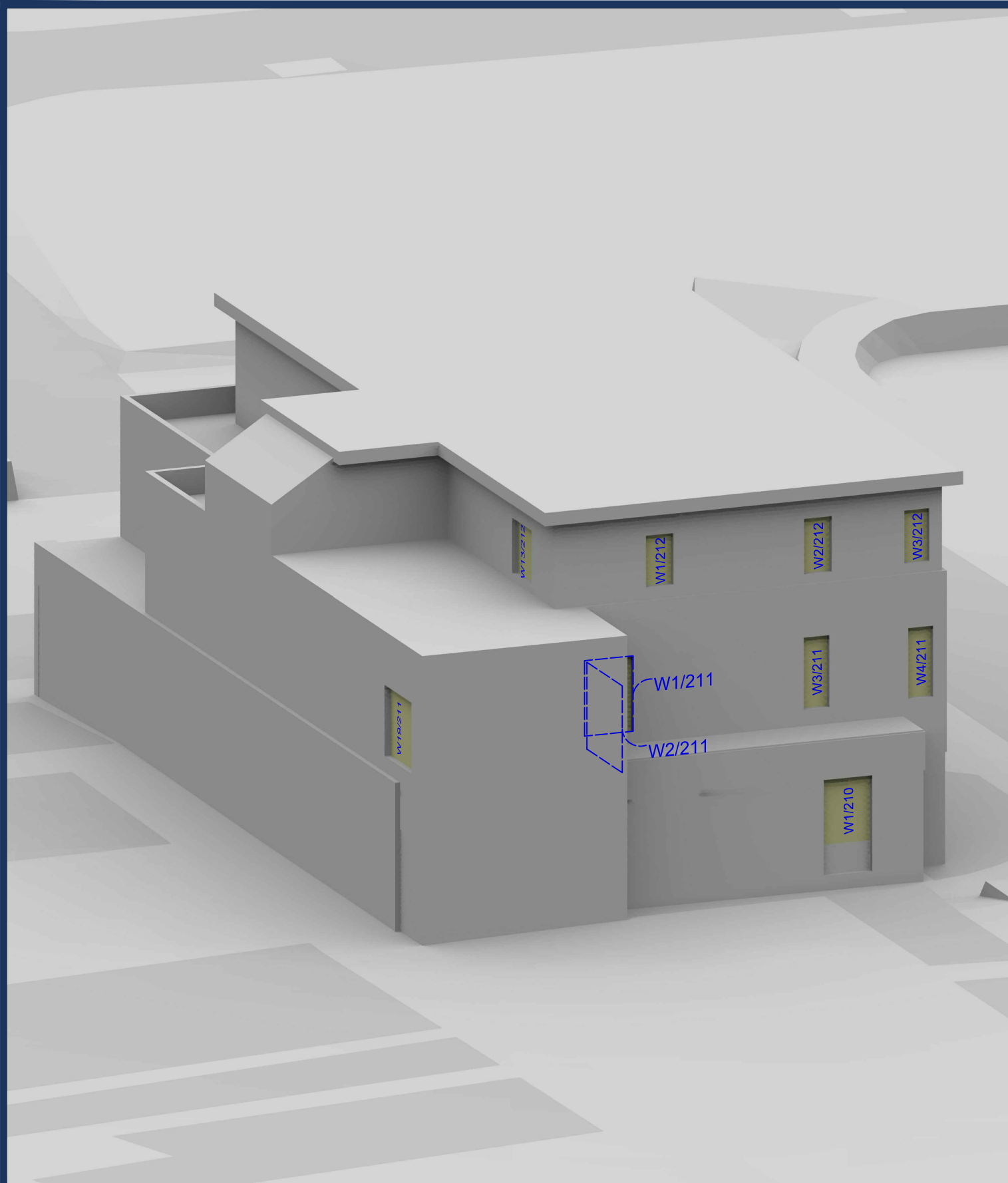
Title: Window Locations  
 Osborne Water Tower House, George Mathers Road

Dwg No: P1870\_WM\_03

Rel: 14







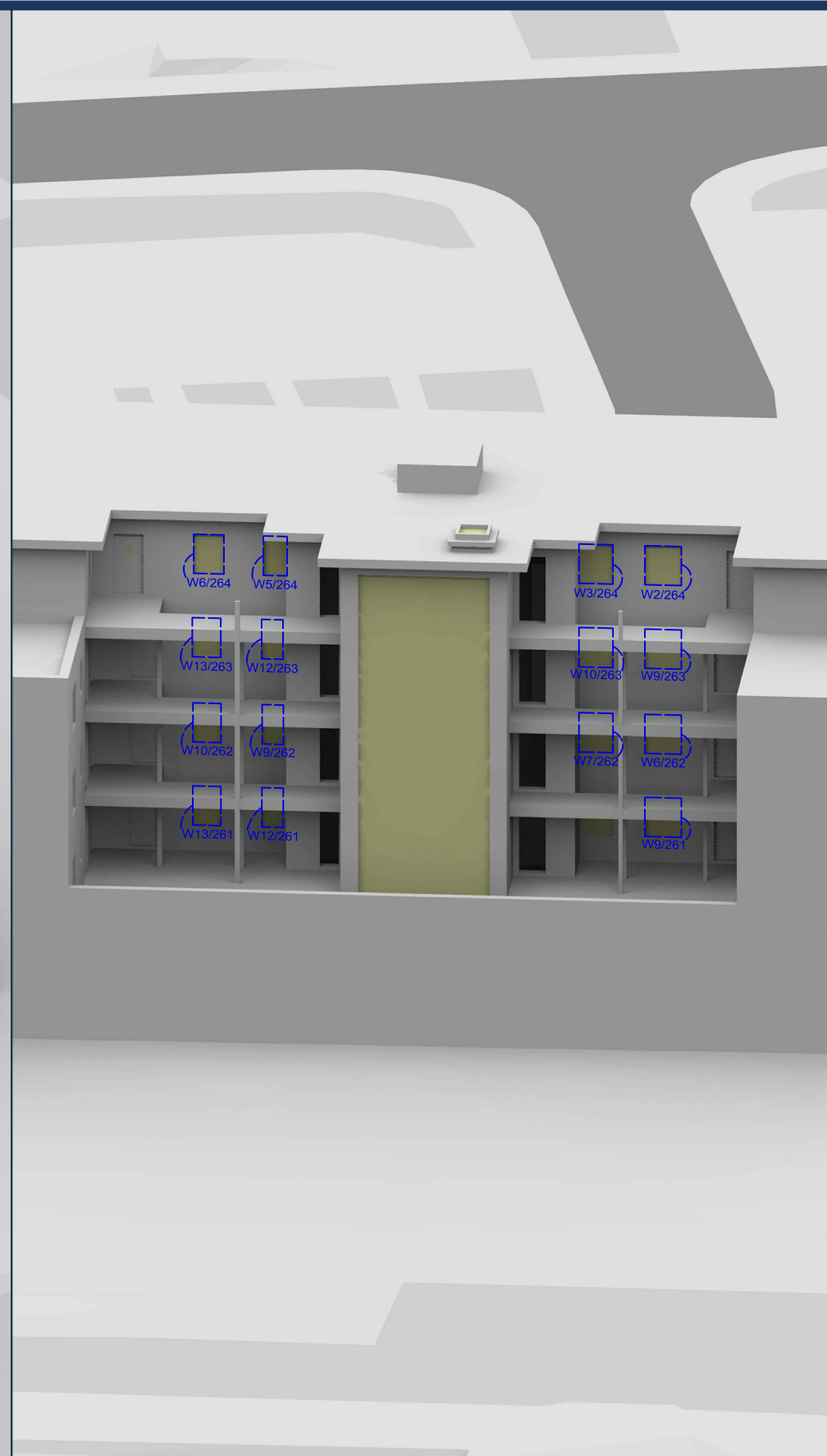
Sources: Point2Surveyors  
 Scan data (received 13/08/18)  
 Woodlands and Masters.rcp  
 Site Photos (received 20/08/18)  
 Rolfe Judd  
 Proposed Info (received 25/03/19)  
 190325-6057-Massing.skp  
 Proposed Info (received 08/03/19)  
 6057 - Options Appraisal - Option 01A.skp  
 Proposed Info (received 28/11/18)  
 6057-Geo Located Massing.dwg

Key:  
 Scheme Confirmed: -  
 Date: -

Project: Woodlands and Masters House, London  
 Drawn By: JG/BZW  
 Scale: NTS @ A3  
 Date: JUL 19

Title: Window Locations  
 Freeman House, 10 George Mathers Road  
 Dwg No: P1870\_WM\_04  
 Rel: 14





Sources: Point2Surveyors  
 Scan data (received 13/08/18)  
 Woodlands and Masters.rcp

Site Photos (received 20/08/18)

Rolfe Judd  
 Proposed Info (received 25/03/19)  
 190325-6057-Massing.skp  
 Proposed Info (received 08/03/19)  
 6057 - Options Appraisal - Option 01A.skp  
 Proposed Info (received 28/11/18)  
 6057-Geo Located Massing.dwg

Key:

Scheme Confirmed: -

Date: -

Project: Woodlands and Masters House, London

Drawn By: JG/BZW

Scale: NTS @ A3

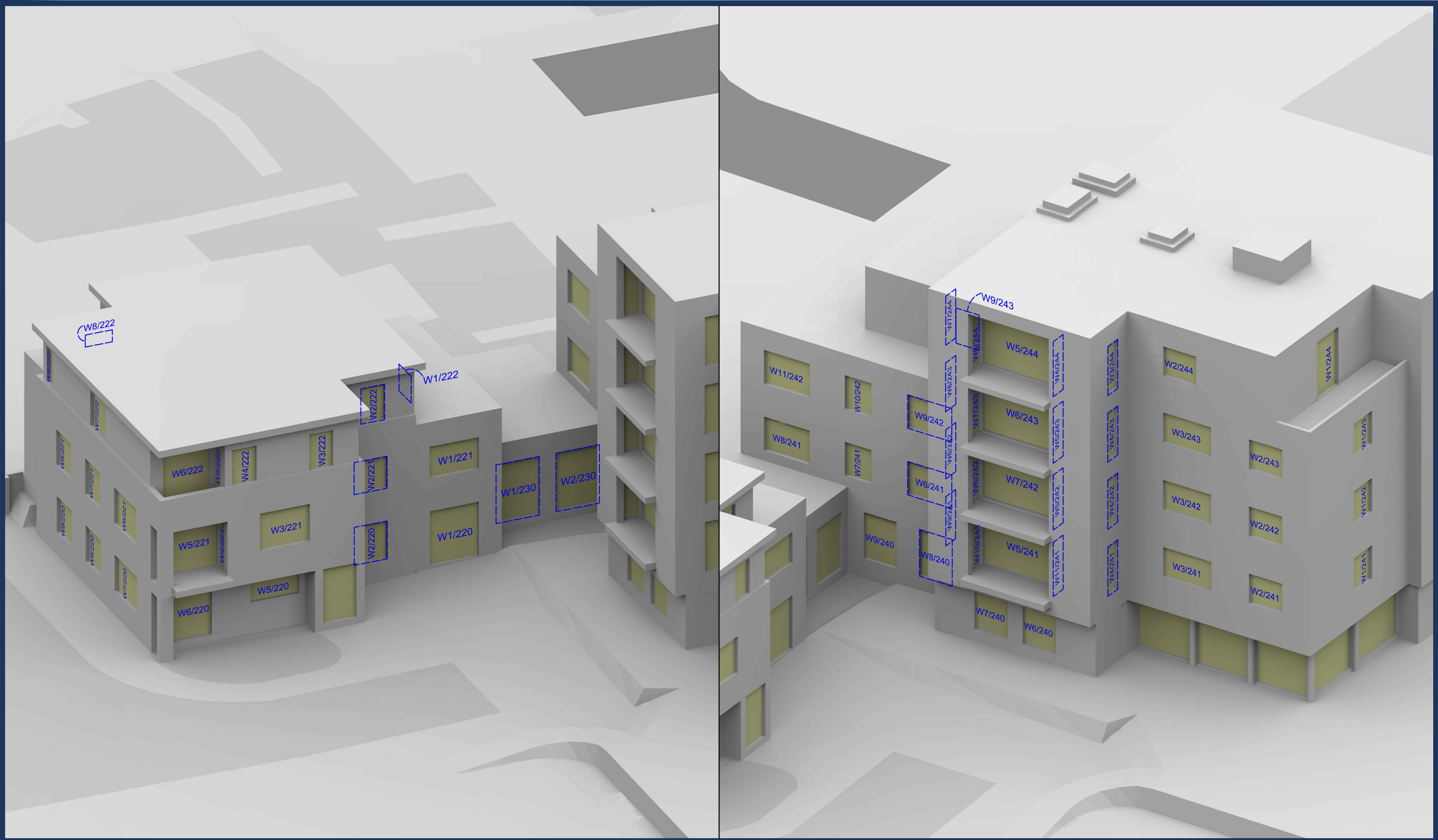
Date: JUL 19

Title: Window Locations  
 Wilmot House, 5 George Mathers Road

Dwg No: P1870\_WM\_05

Rel: 14





Sources: Point2Surveyors  
 Scan data (received 13/08/18)  
 Woodlands and Masters.rcp

Site Photos (received 20/08/18)

Rolfe Judd  
 Proposed Info (received 25/03/19)  
 190325-6057-Massing.skp  
 Proposed Info (received 08/03/19)  
 6057 - Options Appraisal - Option 01A.skp  
 Proposed Info (received 28/11/18)  
 6057-Geo Located Massing.dwg

Key:

Scheme Confirmed: -

Date: -

Project: Woodlands and Masters House, London

Drawn By: JG/BZW

Scale: NTS @ A3

Date: JUL 19

Title: Window Locations  
 Goddard House, 3 George Mathers Road

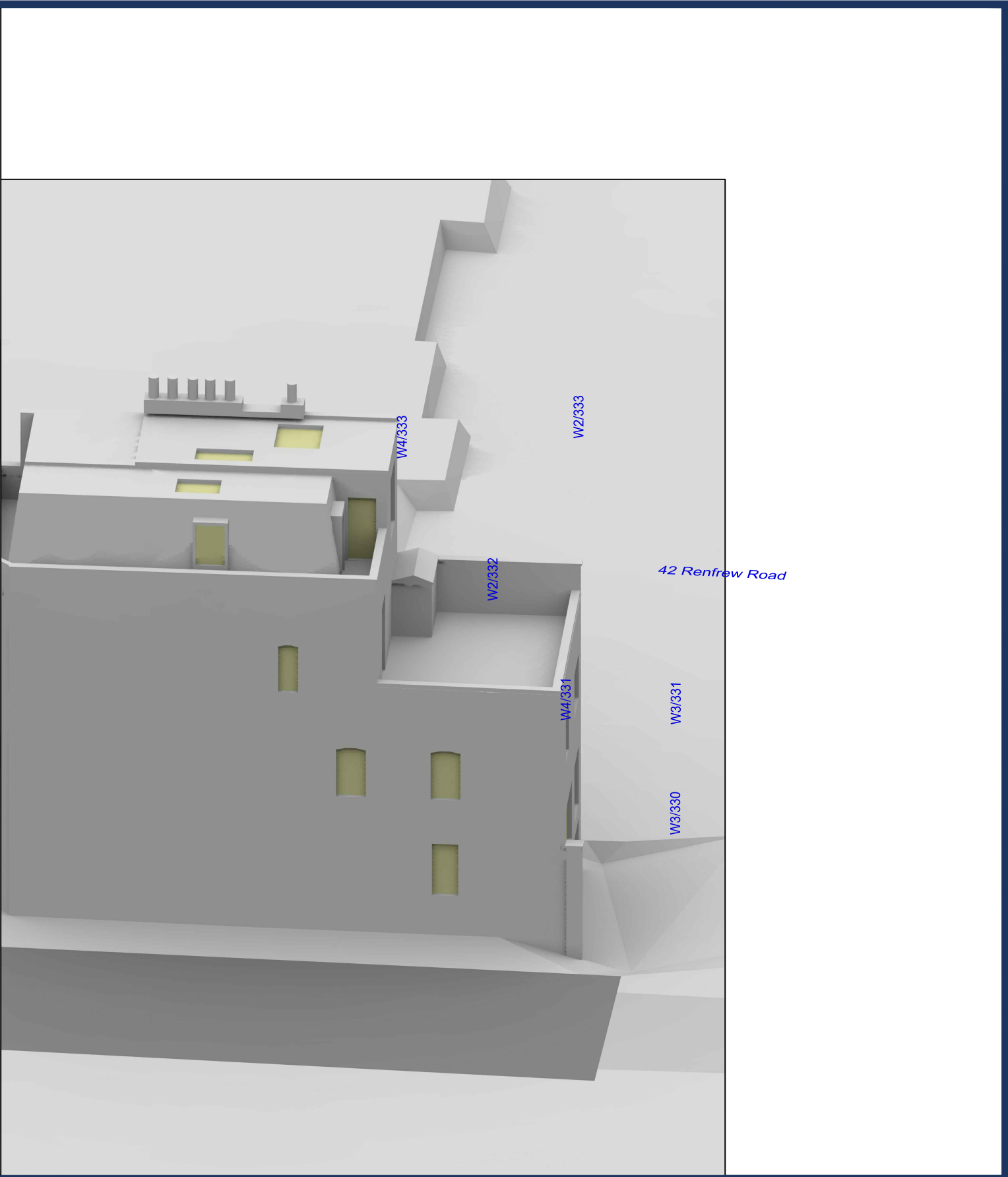
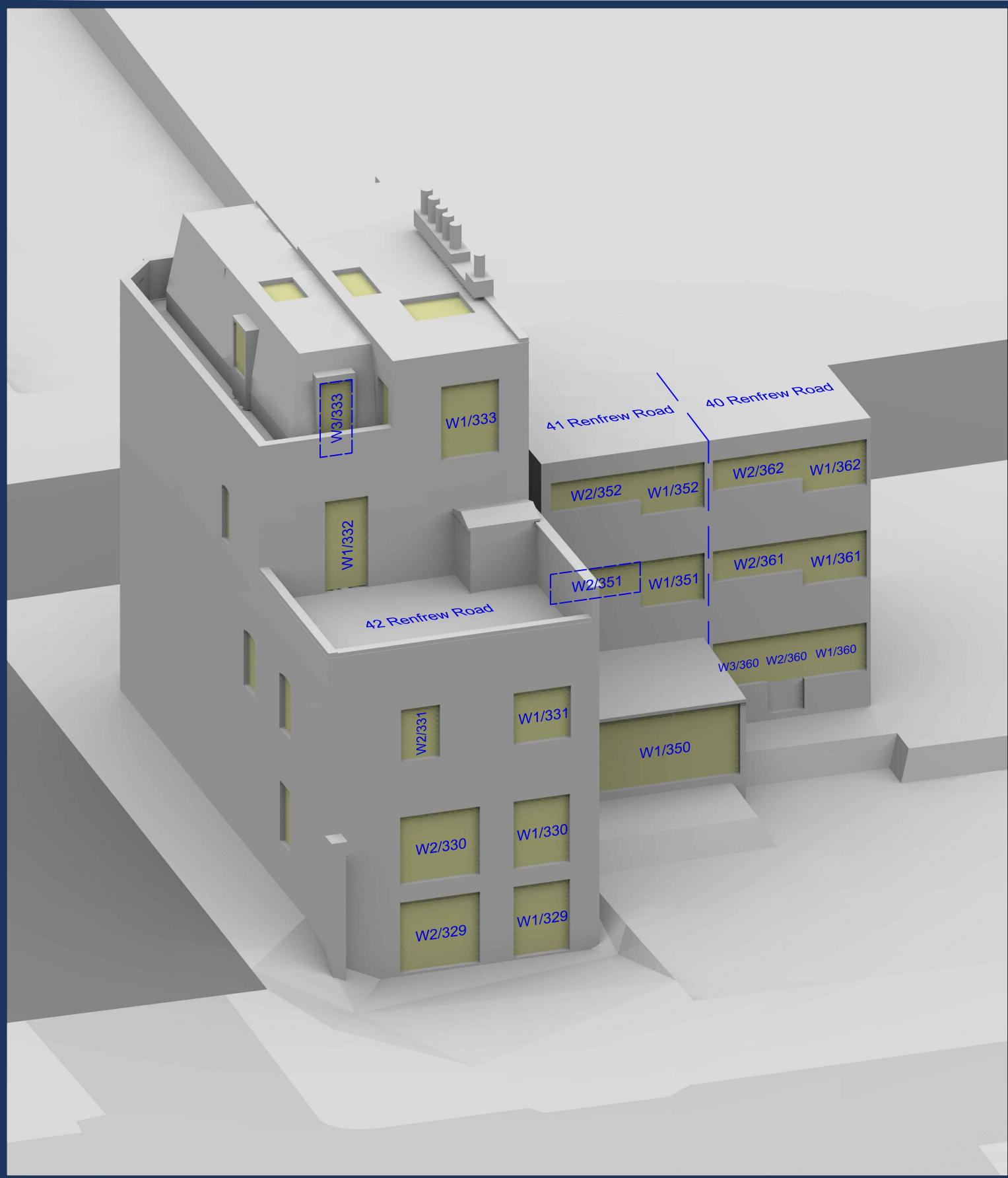
Dwg No: P1870\_WM\_06

Rel: 14









Sources: Point2Surveyors  
 Scan data (received 13/08/18)  
 Woodlands and Masters.rcp

Site Photos (received 20/08/18)

Rolfe Judd  
 Proposed Info (received 25/03/19)  
 190325-6057-Massing.skp  
 Proposed Info (received 08/03/19)  
 6057 - Options Appraisal - Option 01A.skp  
 Proposed Info (received 28/11/18)  
 6057-Geo Located Massing.dwg

Key:

Scheme Confirmed: -

Date: -

Project: Woodlands and Masters House, London

Drawn By: JG/BZW

Scale: NTS @ A3

Date: JUL 19

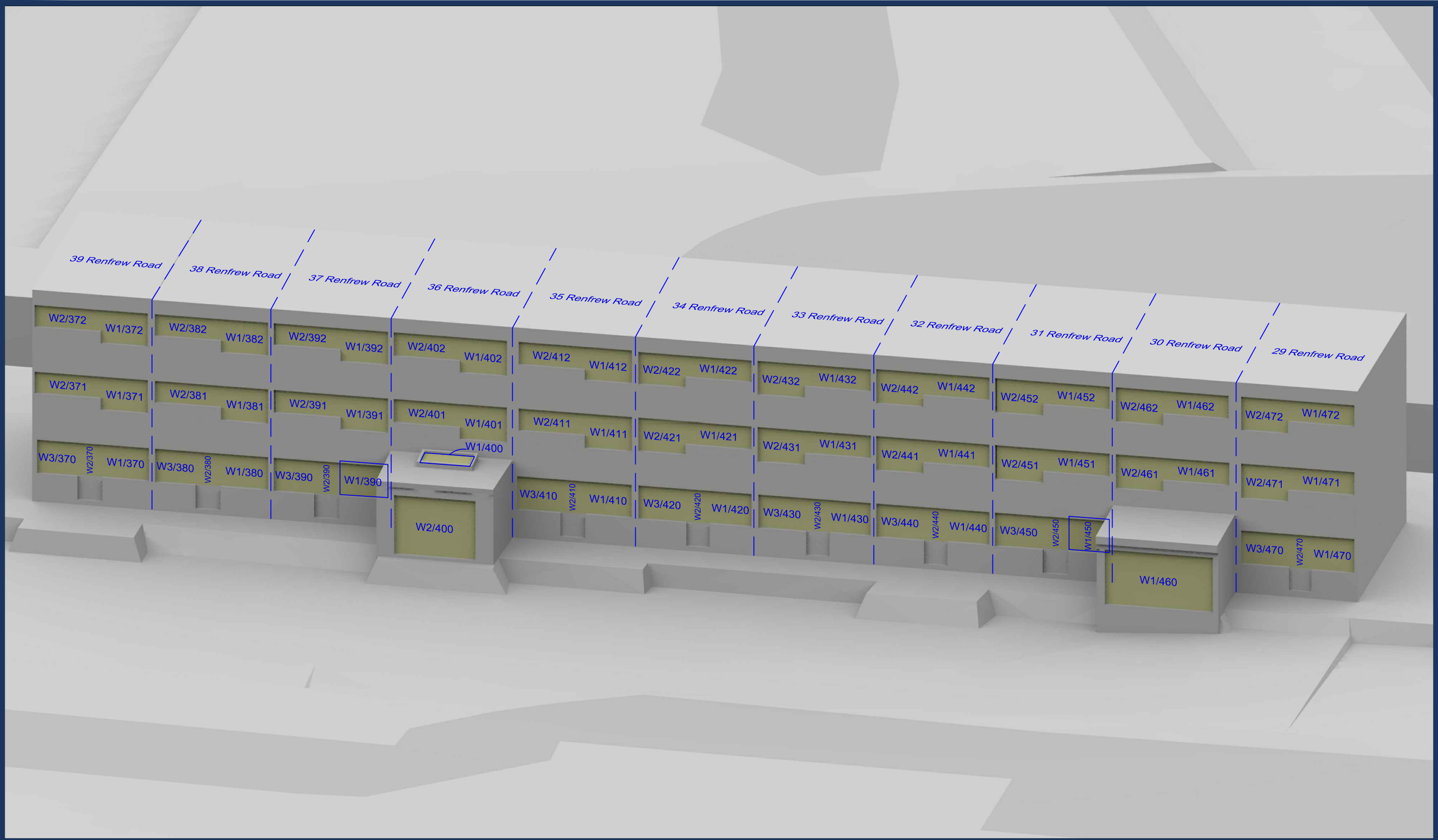
Title: Window Locations  
 40-42 Renfrew Road

Dwg No: P1870\_WM\_08

Rel: 14







Sources: Point2Surveyors  
 Scan data (received 13/08/18)  
 Woodlands and Masters.rcp

Site Photos (received 20/08/18)

Rolfe Judd  
 Proposed Info (received 25/03/19)  
 190325-6057-Massing.skp  
 Proposed Info (received 08/03/19)  
 6057 - Options Appraisal - Option 01A.skp  
 Proposed Info (received 28/11/18)  
 6057-Geo Located Massing.dwg

Key:

Scheme Confirmed: -

Date: -

Project: Woodlands and Masters House, London

Drawn By: JG/BZW

Scale: NTS @ A3

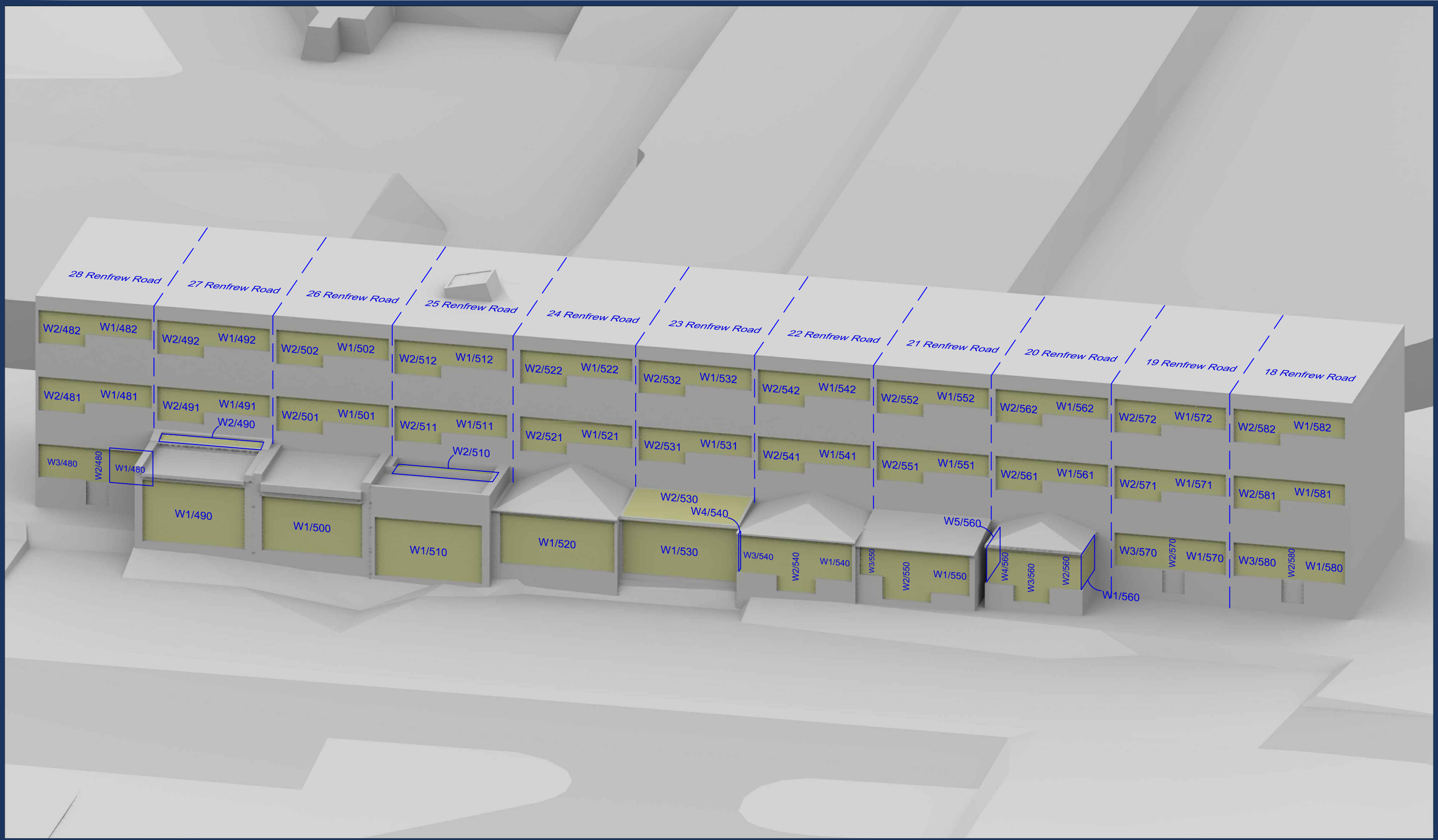
Date: JUL 19

Title: Window Locations  
 29-39 Renfrew Road

Dwg No: P1870\_WM\_09

Rel: 14





Sources: Point2Surveyors  
 Scan data (received 13/08/18)  
 Woodlands and Masters.rcp

Site Photos (received 20/08/18)

Rolfe Judd  
 Proposed Info (received 25/03/19)  
 190325-6057-Massing.skp  
 Proposed Info (received 08/03/19)  
 6057 - Options Appraisal - Option 01A.skp  
 Proposed Info (received 28/11/18)  
 6057-Geo Located Massing.dwg

Key:

Scheme Confirmed: -

Date: -

Project: Woodlands and Masters House, London

Drawn By: BZW/CJ

Scale: NTS @ A3

Date: OCT 20

Title: Window Locations  
 18-28 Renfrew Road

Dwg No: P1870\_WM\_10

Rel: 20





Sources: Point2Surveyors  
 Scan data (received 13/08/18)  
 Woodlands and Masters.rcp

Site Photos (received 20/08/18)

Rolfe Judd  
 Proposed Info (received 25/03/19)  
 190325-6057-Massing.skp  
 Proposed Info (received 08/03/19)  
 6057 - Options Appraisal - Option 01A.skp  
 Proposed Info (received 28/11/18)  
 6057-Geo Located Massing.dwg

Key: — Existing Buildings  
— Proposed Scheme  
 All Heights in mm AOD

Scheme Confirmed:	Date:
-	-

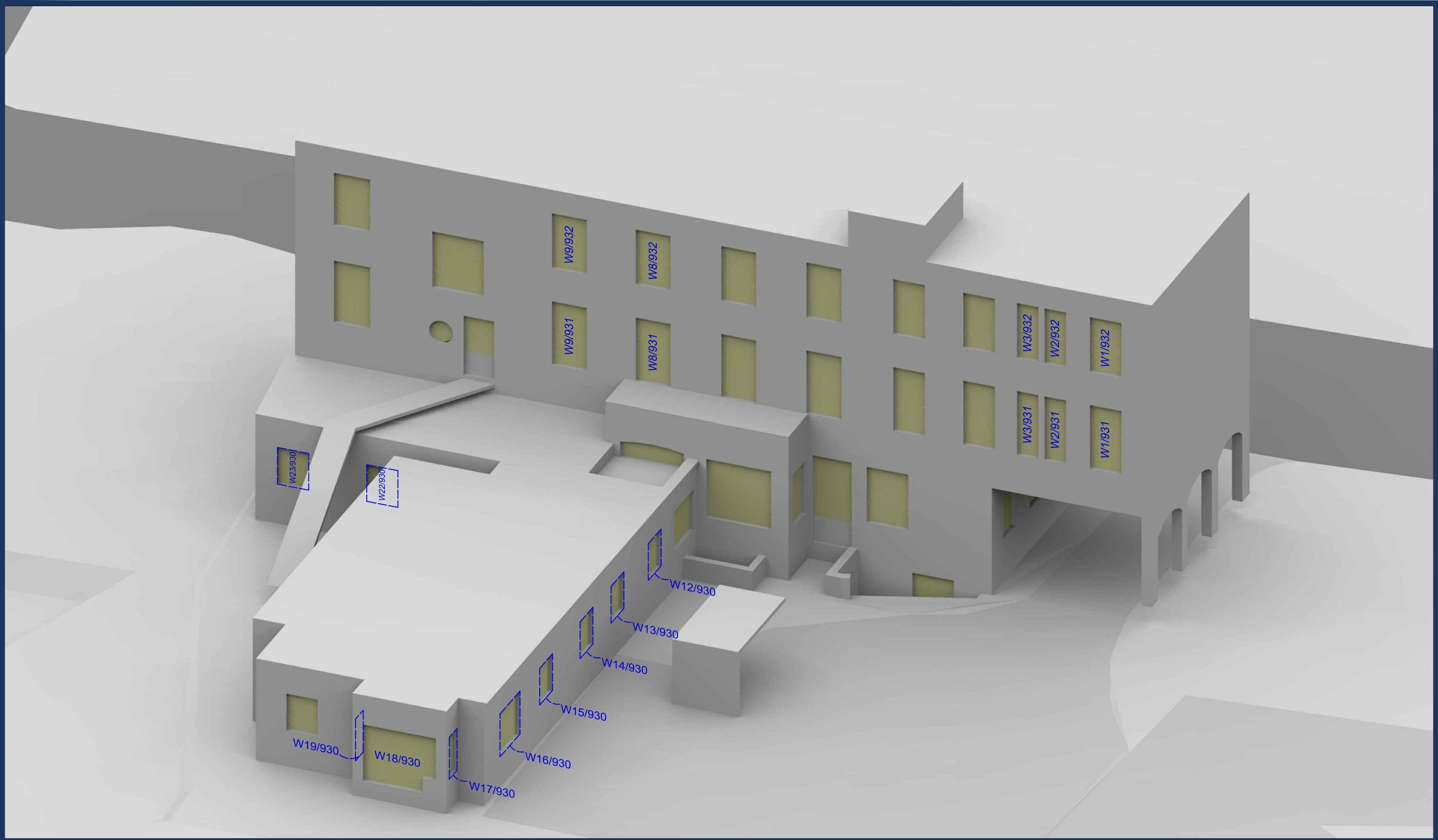
Project: Woodlands and Masters House, London

Drawn By:	Scale:	Date:
JG/BZW	NTS @ A3	JUL 19

Title: Window Locations  
 10-17 Castlebrook Close

Dwg No:	Rel:
<b>P1870_WM_11</b>	<b>14</b>





Sources: Point2Surveyors  
 Scan data (received 13/08/18)  
 Woodlands and Masters.rcp

Site Photos (received 20/08/18)

Rolfe Judd  
 Proposed Info (received 25/03/19)  
 190325-6057-Massing.skp  
 Proposed Info (received 08/03/19)  
 6057 - Options Appraisal - Option 01A.skp  
 Proposed Info (received 28/11/18)  
 6057-Geo Located Massing.dwg

Key:

Scheme Confirmed: -

Date: -

Project: Woodlands and Masters House, London

Drawn By: JG/BZW

Scale: NTS @ A3

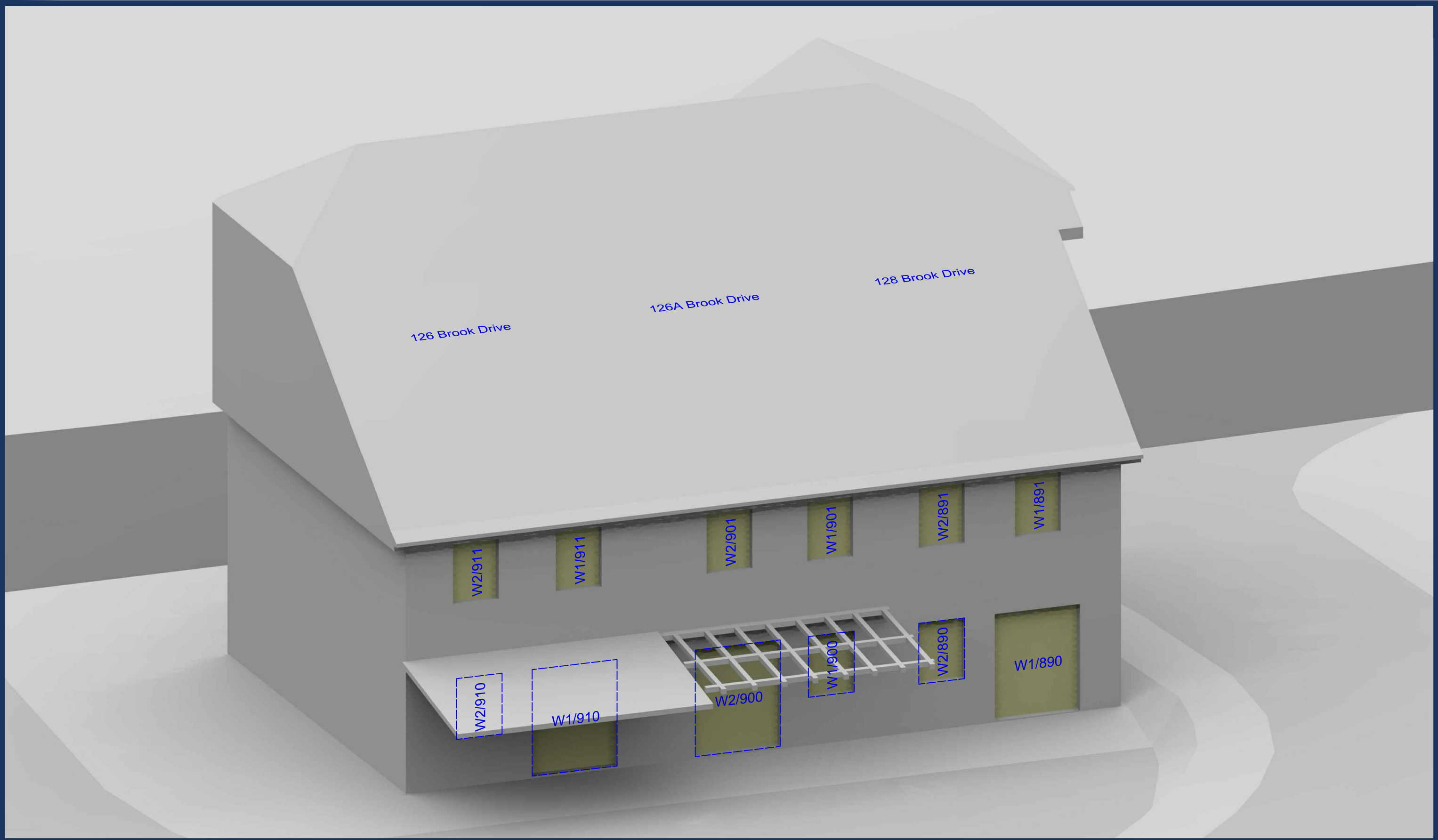
Date: JUL 19

Title: Window Locations  
 124 Brook Drive

Dwg No: P1870\_WM\_12

Rel: 14





Sources: Point2Surveyors  
 Scan data (received 13/08/18)  
 Woodlands and Masters.rcp

Site Photos (received 20/08/18)

Rolfe Judd  
 Proposed Info (received 25/03/19)  
 190325-6057-Massing.skp  
 Proposed Info (received 08/03/19)  
 6057 - Options Appraisal - Option 01A.skp  
 Proposed Info (received 28/11/18)  
 6057-Geo Located Massing.dwg

Key:

Scheme Confirmed: -

Date: -

Project: Woodlands and Masters House, London

Drawn By: JG/BZW

Scale: NTS @ A3

Date: JUL 19

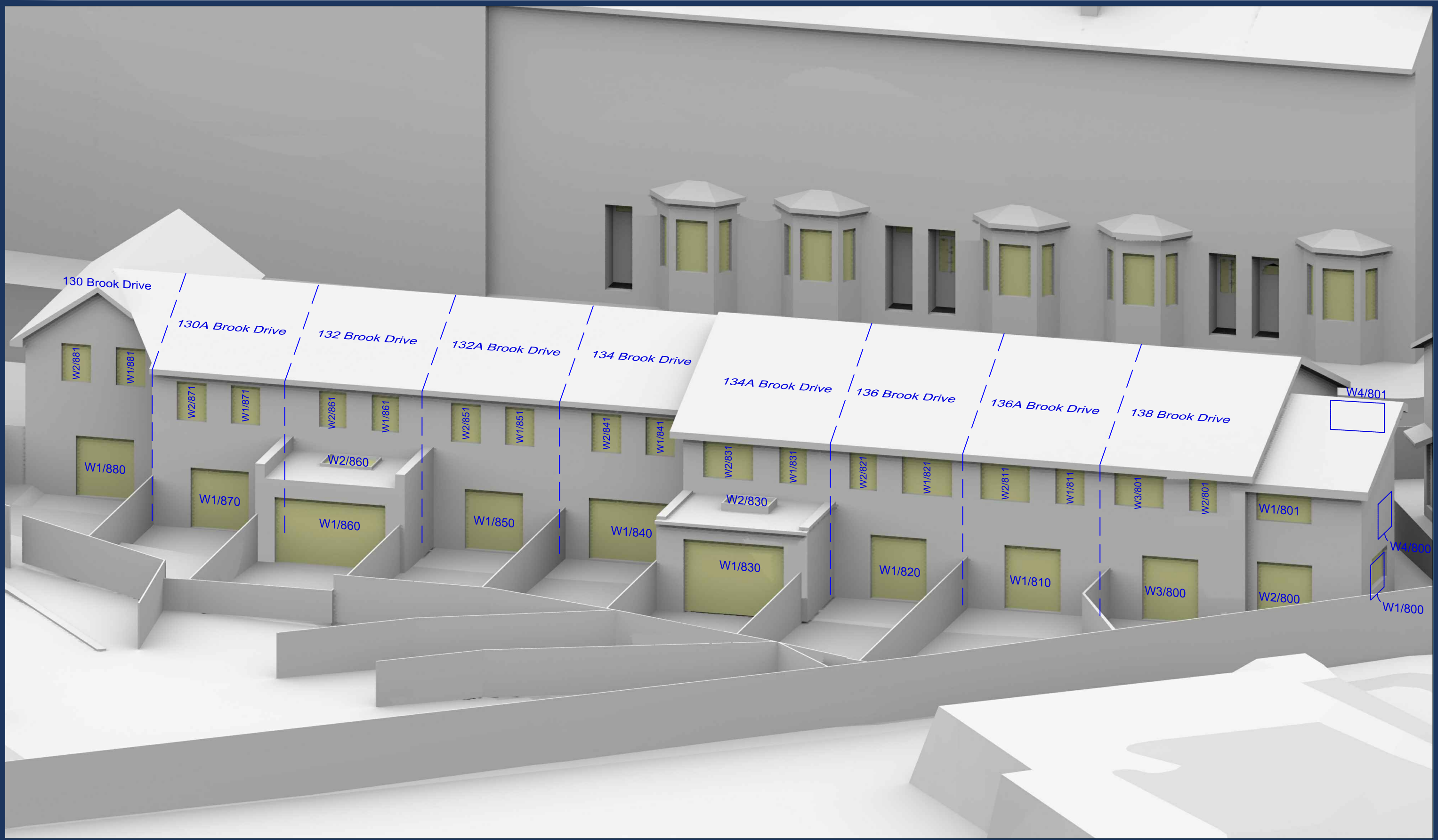
Title: Window Locations  
 126 - 128 Brook Drive

Dwg No: P1870\_WM\_13

Rel: 14







Sources: Point2Surveyors  
 Scan data (received 13/08/18)  
 Woodlands and Masters.rcp  
 Site Photos (received 20/08/18)  
 Rolfe Judd  
 Proposed Info (received 25/03/19)  
 190325-6057-Massing.skp  
 Proposed Info (received 08/03/19)  
 6057 - Options Appraisal - Option 01A.skp  
 Proposed Info (received 28/11/18)  
 6057-Geo Located Massing.dwg

Key:

Scheme Confirmed: -

Date: -

Project: Woodlands and Masters House, London

Drawn By: BZW/CJ

Scale: NTS @ A3

Date: OCT 20

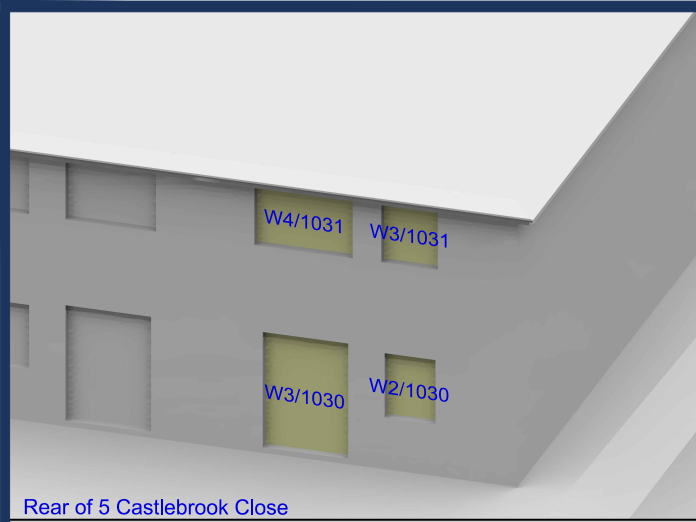
Title: Window Locations  
 130-138 Brook Drive

Dwg No: P1870\_WM\_14

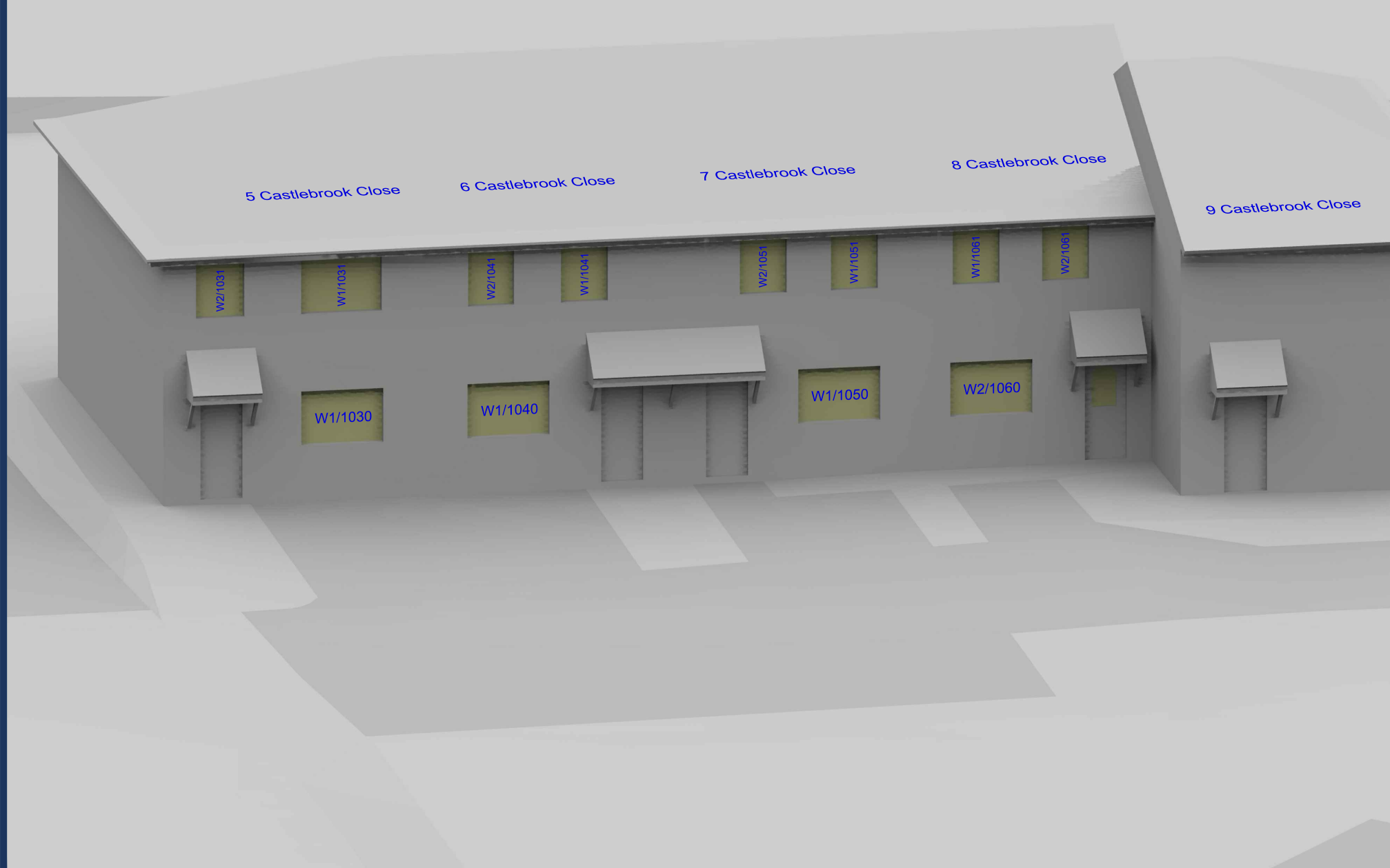
Rel: 20







Rear of 5 Castlebrook Close



Sources: Point2Surveyors  
 Scan data (received 13/08/18)  
 Woodlands and Masters.rcp  
 Site Photos (received 20/08/18)  
 Rolfe Judd  
 Proposed Info (received 25/03/19)  
 190325-6057-Massing.skp  
 Proposed Info (received 08/03/19)  
 6057 - Options Appraisal - Option 01A.skp  
 Proposed Info (received 28/11/18)  
 6057-Geo Located Massing.dwg

Key:

Scheme Confirmed: -  
 Date: -

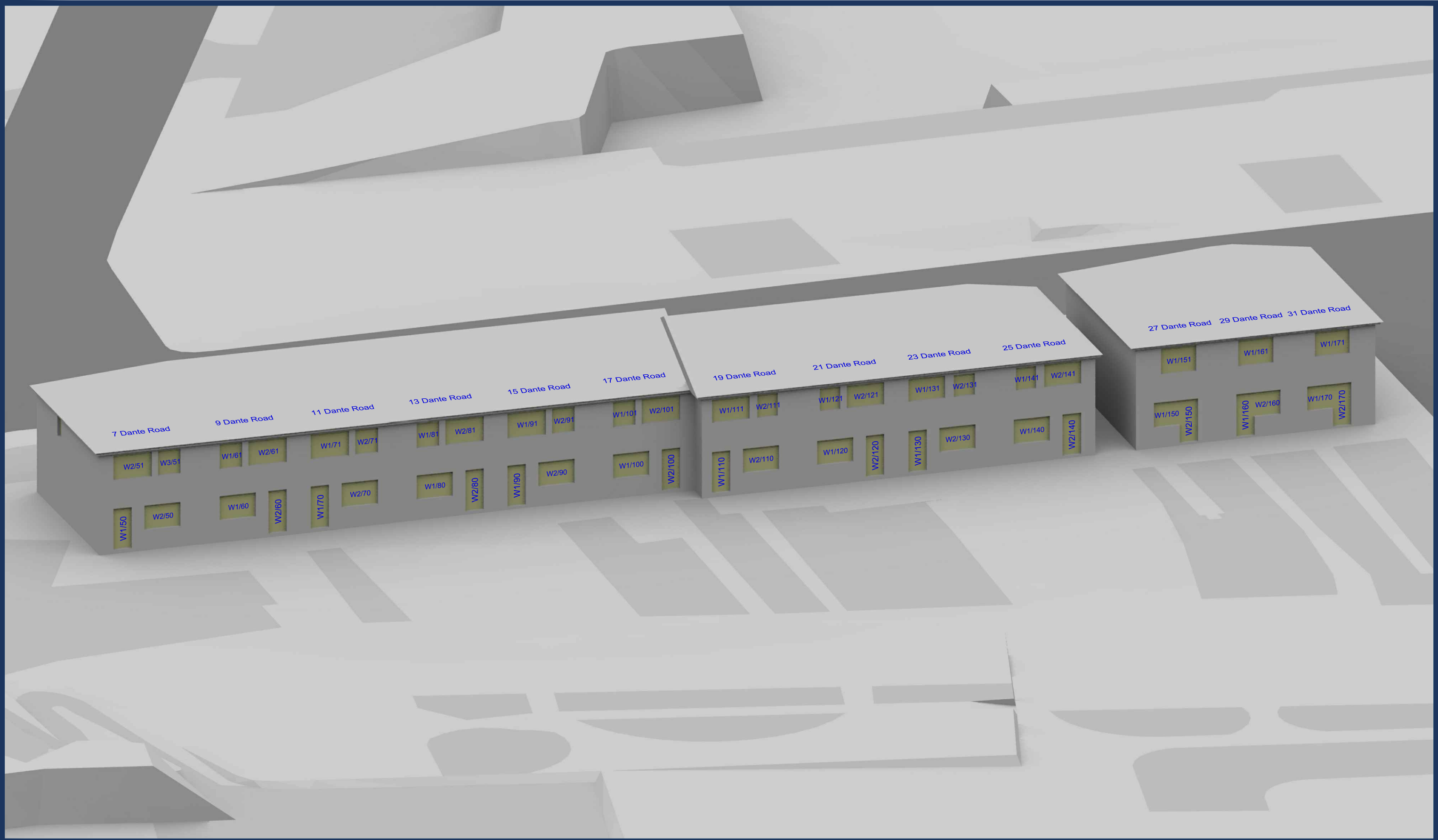
Project: Woodlands and Masters House, London

Drawn By: JG/BZW  
 Scale: NTS @ A3  
 Date: JUL 19

Title: Window Locations  
 5-9 Castlebrook Close

Dwg No: P1870\_WM\_16  
 Rel: 14





Sources: Point2Surveyors  
 Scan data (received 13/08/18)  
 Woodlands and Masters.rcp

Site Photos (received 20/08/18)

Rolfe Judd  
 Proposed Info (received 25/03/19)  
 190325-6057-Massing.skp  
 Proposed Info (received 08/03/19)  
 6057 - Options Appraisal - Option 01A.skp  
 Proposed Info (received 28/11/18)  
 6057-Geo Located Massing.dwg

Key:

Scheme Confirmed: -

Date: -

Project: Woodlands and Masters House, London

Drawn By: JG/BZW

Scale: NTS @ A3

Date: JUL 19

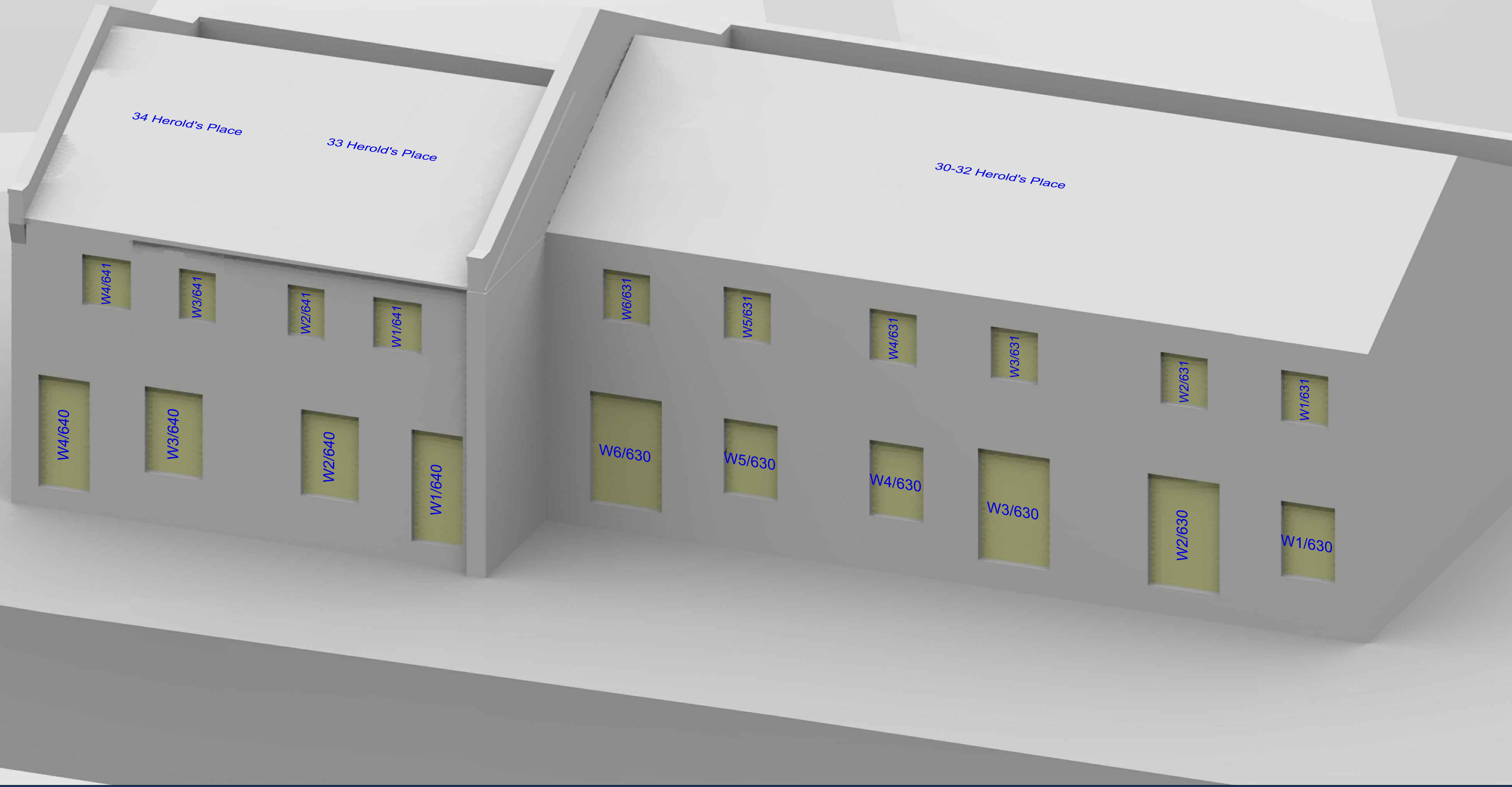
Title: Window Locations  
 7-31 Dante Road

Dwg No: P1870\_WM\_17

Rel: 14







Sources: Point2Surveyors  
 Scan data (received 13/08/18)  
 Woodlands and Masters.rcp

Site Photos (received 20/08/18)

Rolfe Judd  
 Proposed Info (received 25/03/19)  
 190325-6057-Massing.skp  
 Proposed Info (received 08/03/19)  
 6057 - Options Appraisal - Option 01A.skp  
 Proposed Info (received 28/11/18)  
 6057-Geo Located Massing.dwg

Key:

Scheme Confirmed: -

Date: -

Project: Woodlands and Masters House, London

Drawn By: JG/BZW

Scale: NTS @ A3

Date: JUL 19

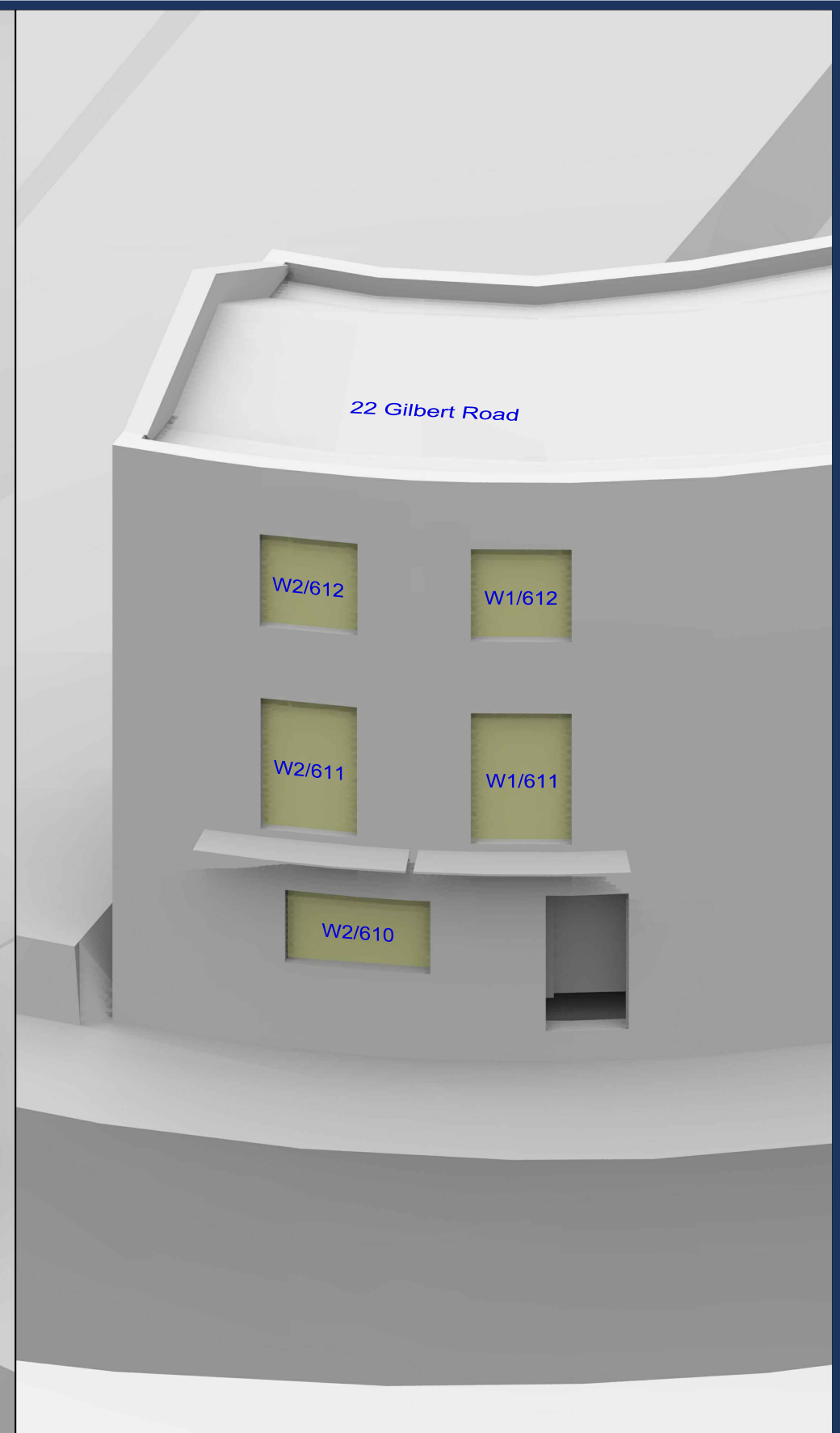
Title: Window Locations  
 30-32,33 & 34 Herold's Place

Dwg No: P1870\_WM\_18

Rel: 14







Sources: Point2Surveyors  
 Scan data (received 13/08/18)  
 Woodlands and Masters.rcp

Site Photos (received 20/08/18)

Rolfe Judd  
 Proposed Info (received 25/03/19)  
 190325-6057-Massing.skp  
 Proposed Info (received 08/03/19)  
 6057 - Options Appraisal - Option 01A.skp  
 Proposed Info (received 28/11/18)  
 6057-Geo Located Massing.dwg

Key:

Scheme Confirmed: -

Date: -

Project: Woodlands and Masters House, London

Drawn By: JG/BZW

Scale: NTS @ A3

Date: JUL 19

Title: Window Locations  
 23-26 Herold's Place and 22 Gilbert Road

Dwg No: P1870\_WM\_19

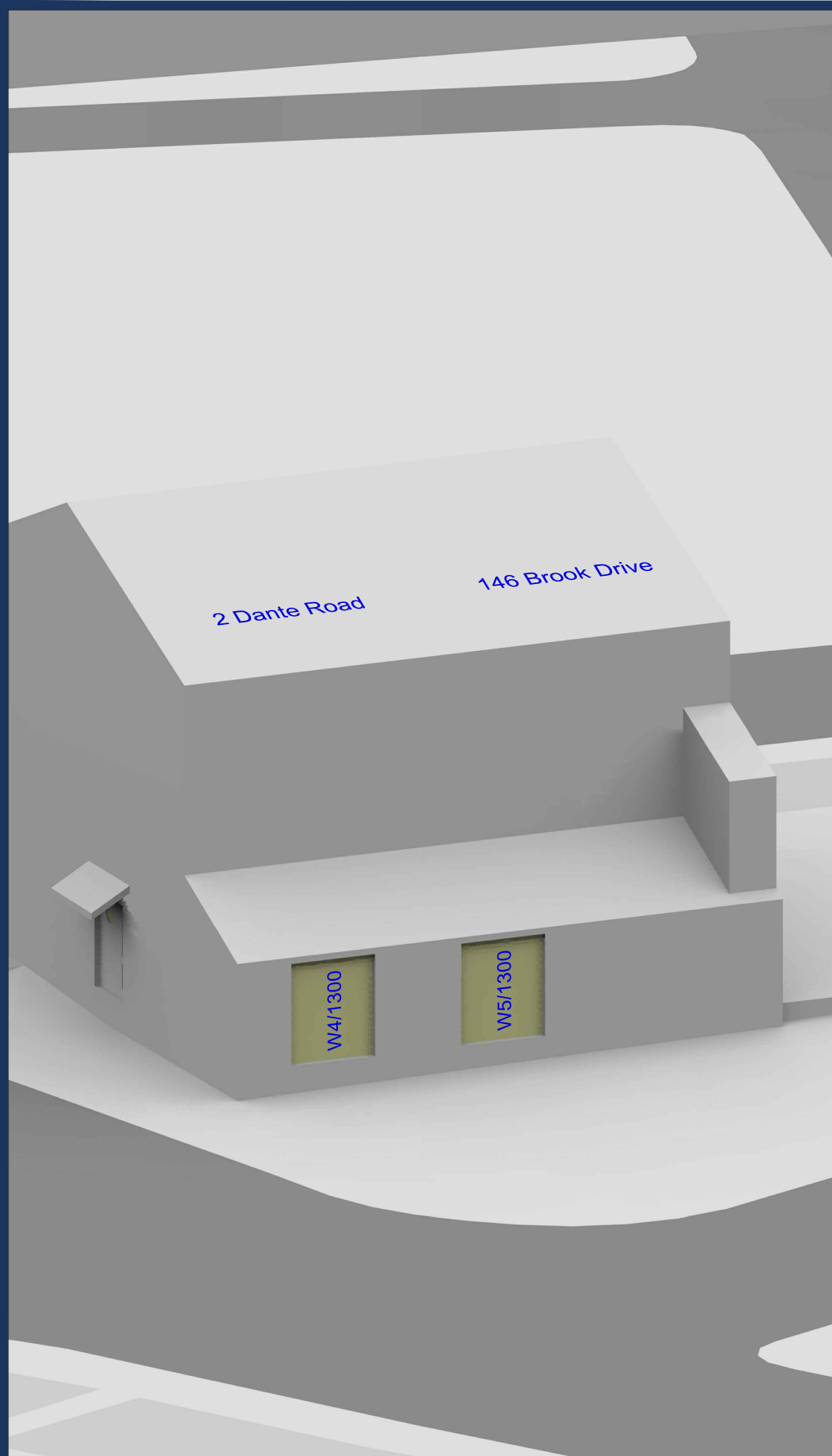
Rel: 14





Sources: Point2Surveyors Scan data (received 13/08/18) Woodlands and Masters.rcp  Site Photos (received 20/08/18)  Rolfe Judd Proposed Info (received 25/03/19) 190325-6057-Massing.skp Proposed Info (received 08/03/19) 6057 - Options Appraisal - Option 01A.skp Proposed Info (received 28/11/18) 6057-Geo Located Massing.dwg		Key:		Project: Woodlands and Masters House, London		Title: Window Locations 141-155 Brook Drive	
Scheme Confirmed: -		Date: -		Drawn By: JG/BZW		Scale: NTS @ A3	
				Date: JUL 19		Dwg No: <b>P1870_WM_20</b>	
						Rel: <b>14</b>	





Sources: Point2Surveyors  
 Scan data (received 13/08/18)  
 Woodlands and Masters.rcp

Site Photos (received 20/08/18)

Rolfe Judd  
 Proposed Info (received 25/03/19)  
 190325-6057-Massing.skp  
 Proposed Info (received 08/03/19)  
 6057 - Options Appraisal - Option 01A.skp  
 Proposed Info (received 28/11/18)  
 6057-Geo Located Massing.dwg

Key:

Scheme Confirmed: -

Date: -

Project: Woodlands and Masters House, London

Drawn By: JG/BZW

Scale: NTS @ A3

Date: JUL 19

Title: Window Locations  
 2 Dante Road, 146 Brook Drive and 6 Dante Road

Dwg No: P1870\_WM\_21

Rel: 14

