



FOURTH FLOOR

Sources: Point2Surveyors
 Scan data (received 13/08/18)
 Woodlands and Masters.rcp
 Site Photos (received 20/08/18)
 Rolfe Judd
 Proposed Info (received 25/03/19)
 190325-6057-Massing.skp
 Proposed Info (received 08/03/19)
 6057 - Options Appraisal - Option 01A.skp
 Proposed Info (received 28/11/18)
 6057-Geo Located Massing.dwg

Key:

- Existing NSL Contour
- Proposed NSL Contour
- Region of Loss / Gain

Project: Woodlands and Masters House, London

Title: No-Sky Line Contours
 Proposed Scheme received 25/03/2019
 Wilmot House, 5 George Mathers Road

Scheme Confirmed:

Date:

Drawn By:
 BZW/CJ

Scale:
 1:150@ A3

Date:
 OCT 20

Dwg No:
P1870/NSL/34

Rel:
20








GROUND FLOOR

Sources: Point2Surveyors
 Scan data (received 13/08/18)
 Woodlands and Masters.rcp

Site Photos (received 20/08/18)

Rolfe Judd
 Proposed Info (received 25/03/19)
 190325-6057-Massing.skp
 Proposed Info (received 08/03/19)
 6057 - Options Appraisal - Option 01A.skp
 Proposed Info (received 28/11/18)
 6057-Geo Located Massing.dwg

Key:

-  Existing NSL Contour
-  Proposed NSL Contour
-  Region of Loss / Gain

Project: Woodlands and Masters House, London

Title: No-Sky Line Contours
 Proposed Scheme received 25/03/2019
 Goddard House, 3 George Mathers Road

Scheme Confirmed:
 -

Date:
 -

Drawn By:
 BZW/CJ

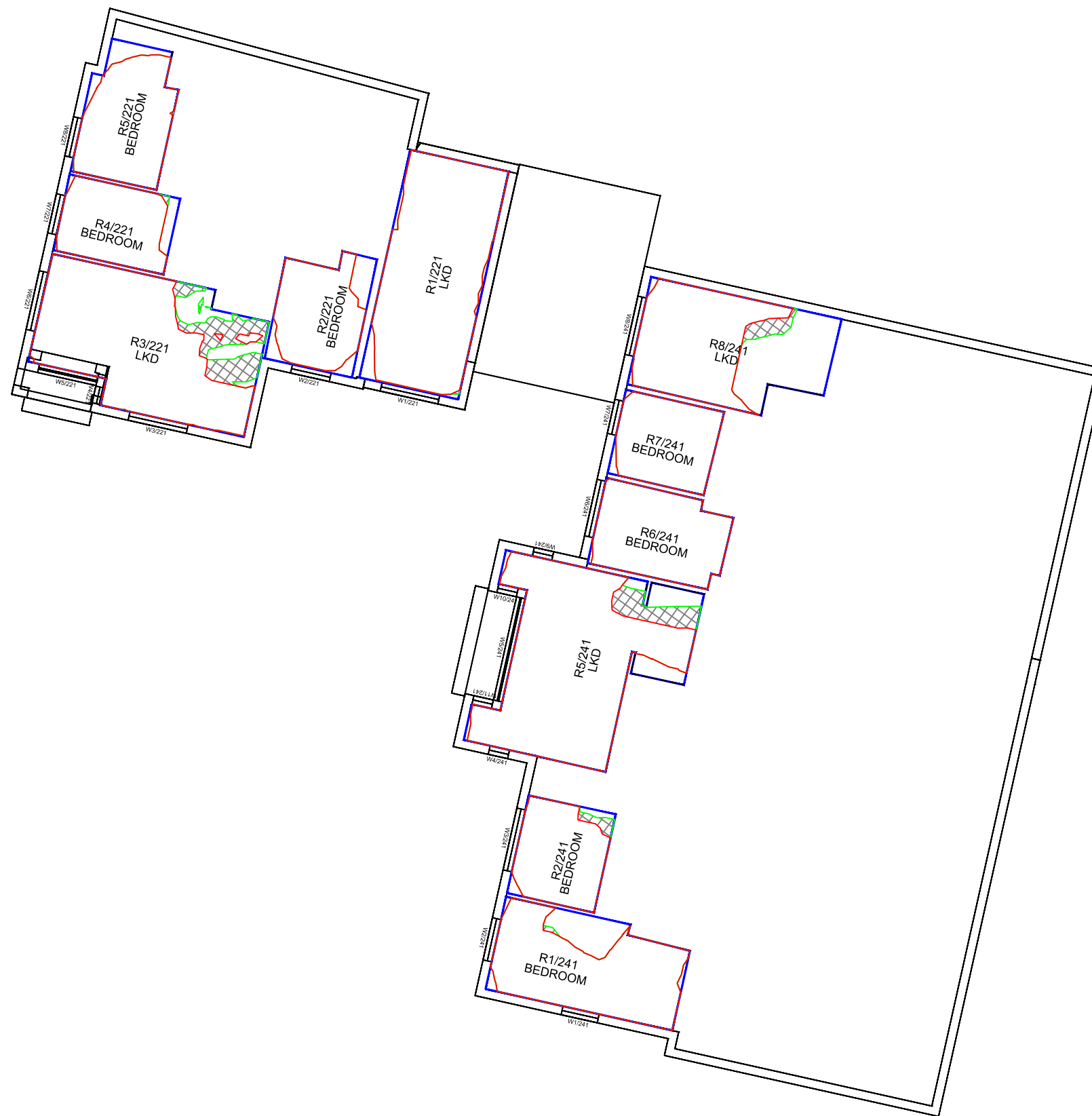
Scale:
 1:175@ A3

Date:
 OCT 20

Dwg No:
P1870/NSL/35




Rel:
20





FIRST FLOOR

Sources: Point2Surveyors
 Scan data (received 13/08/18)
 Woodlands and Masters.rcp
 Site Photos (received 20/08/18)
 Rolfe Judd
 Proposed Info (received 25/03/19)
 190325-6057-Massing.skp
 Proposed Info (received 08/03/19)
 6057 - Options Appraisal - Option 01A.skp
 Proposed Info (received 28/11/18)
 6057-Geo Located Massing.dwg

- Key:
-  Existing NSL Contour
 -  Proposed NSL Contour
 -  Region of Loss / Gain

Project: Woodlands and Masters House, London

Title: No-Sky Line Contours
 Proposed Scheme received 25/03/2019
 Goddard House, 3 George Mathers Road

Scheme Confirmed: -

Date: -

Drawn By: BZW/CJ

Scale: 1:175@ A3

Date: OCT 20

Dwg No: **P1870/NSL/36**

Rel: **20**








SECOND FLOOR

Sources: Point2Surveyors
 Scan data (received 13/08/18)
 Woodlands and Masters.rcp

Site Photos (received 20/08/18)

Rolfe Judd
 Proposed Info (received 25/03/19)
 190325-6057-Massing.skp
 Proposed Info (received 08/03/19)
 6057 - Options Appraisal - Option 01A.skp
 Proposed Info (received 28/11/18)
 6057-Geo Located Massing.dwg

Key:

-  Existing NSL Contour
-  Proposed NSL Contour
-  Region of Loss / Gain

Project: Woodlands and Masters House, London

Title: No-Sky Line Contours
 Proposed Scheme received 25/03/2019
 Goddard House, 3 George Mathers Road

Scheme Confirmed:
 -

Date:
 -

Drawn By:
 BZW/CJ

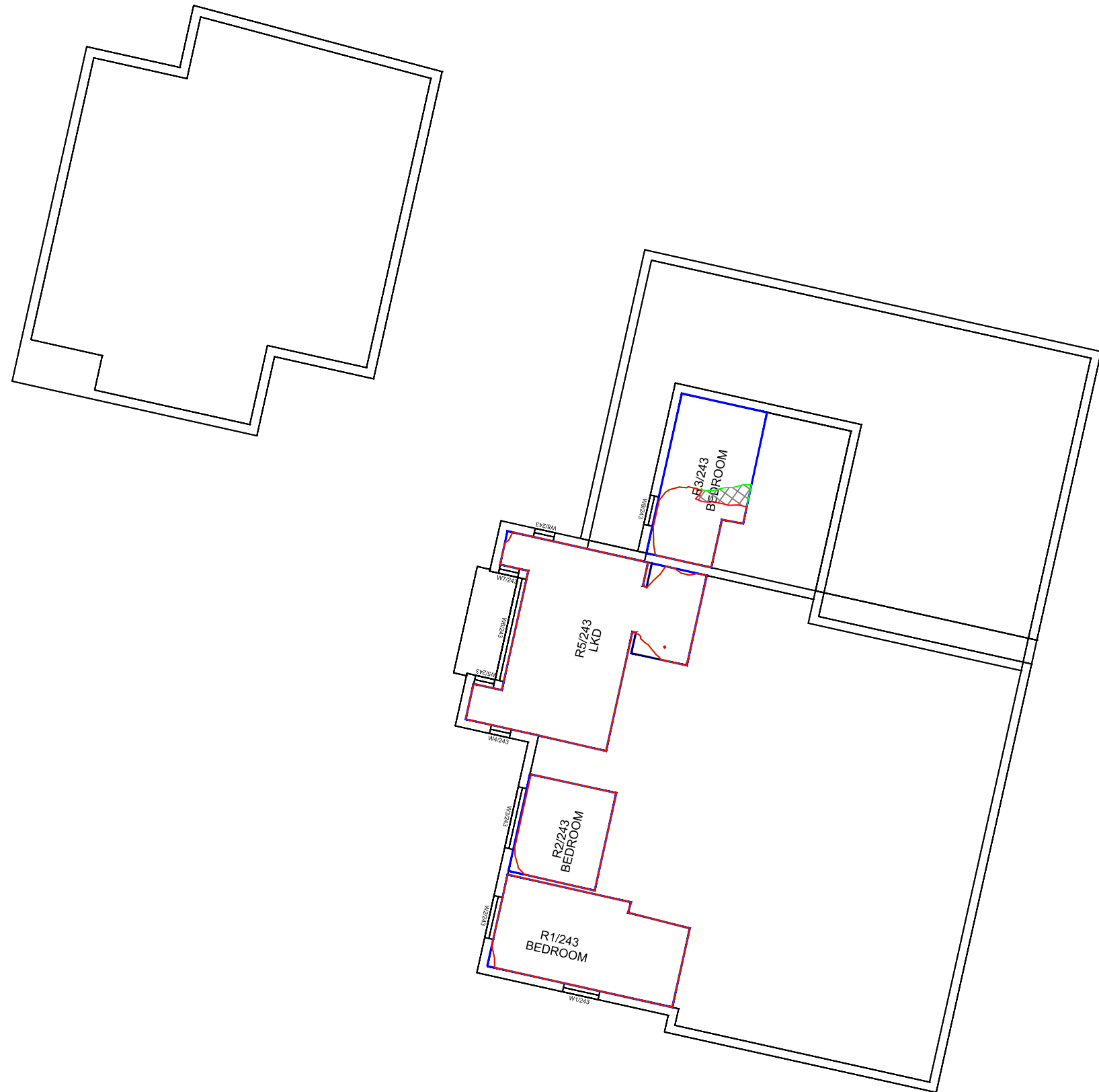
Scale:
 1:175@ A3

Date:
 OCT 20

Dwg No:
P1870/NSL/37

Rel:
20





THIRD FLOOR

Sources: Point2Surveyors
 Scan data (received 13/08/18)
 Woodlands and Masters.rcp
 Site Photos (received 20/08/18)
 Rolfe Judd
 Proposed Info (received 25/03/19)
 190325-6057-Massing.skp
 Proposed Info (received 08/03/19)
 6057 - Options Appraisal - Option 01A.skp
 Proposed Info (received 28/11/18)
 6057-Geo Located Massing.dwg

Key: Existing NSL Contour
 Proposed NSL Contour
 Region of Loss / Gain

Project: Woodlands and Masters House, London

Title: No-Sky Line Contours
 Proposed Scheme received 25/03/2019
 Goddard House, 3 George Mathers Road

Scheme Confirmed: -

Date: -

Drawn By: BZW/CJ

Scale: 1:175@ A3

Date: OCT 20

Dwg No: **P1870/NSL/38**




Rel: **20**





GROUND FLOOR

Sources: Point2Surveyors
 Scan data (received 13/08/18)
 Woodlands and Masters.rcp
 Site Photos (received 20/08/18)
 Rolfe Judd
 Proposed Info (received 25/03/19)
 190325-6057-Massing.skp
 Proposed Info (received 08/03/19)
 6057 - Options Appraisal - Option 01A.skp
 Proposed Info (received 28/11/18)
 6057-Geo Located Massing.dwg

- Key:
-  Existing NSL Contour
 -  Proposed NSL Contour
 -  Region of Loss / Gain

Project: Woodlands and Masters House, London

Title: No-Sky Line Contours
 Proposed Scheme received 25/03/2019
 Bolton House, 7-8 George Mathers Road

Scheme Confirmed:

Date:

Drawn By:
 BZW/CJ

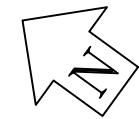
Scale:
 1:175@ A3

Date:
 OCT 20

Dwg No:
P1870/NSL/40

Rel:
20





7

BOLTON HOUSE



8


1st FLOOR

Sources: Point2Surveyors
 Scan data (received 13/08/18)
 Woodlands and Masters.rcp

Site Photos (received 20/08/18)

Rolfe Judd
 Proposed Info (received 25/03/19)
 190325-6057-Massing.skp
 Proposed Info (received 08/03/19)
 6057 - Options Appraisal - Option 01A.skp
 Proposed Info (received 28/11/18)
 6057-Geo Located Massing.dwg

Key:

-  Existing NSL Contour
-  Proposed NSL Contour
-  Region of Loss / Gain

Project: Woodlands and Masters House, London

Title: No-Sky Line Contours
 Proposed Scheme received 25/03/2019
 Bolton House, 7-8 George Mathers Road

Scheme Confirmed: -

Date: -

Drawn By: BZW/CJ

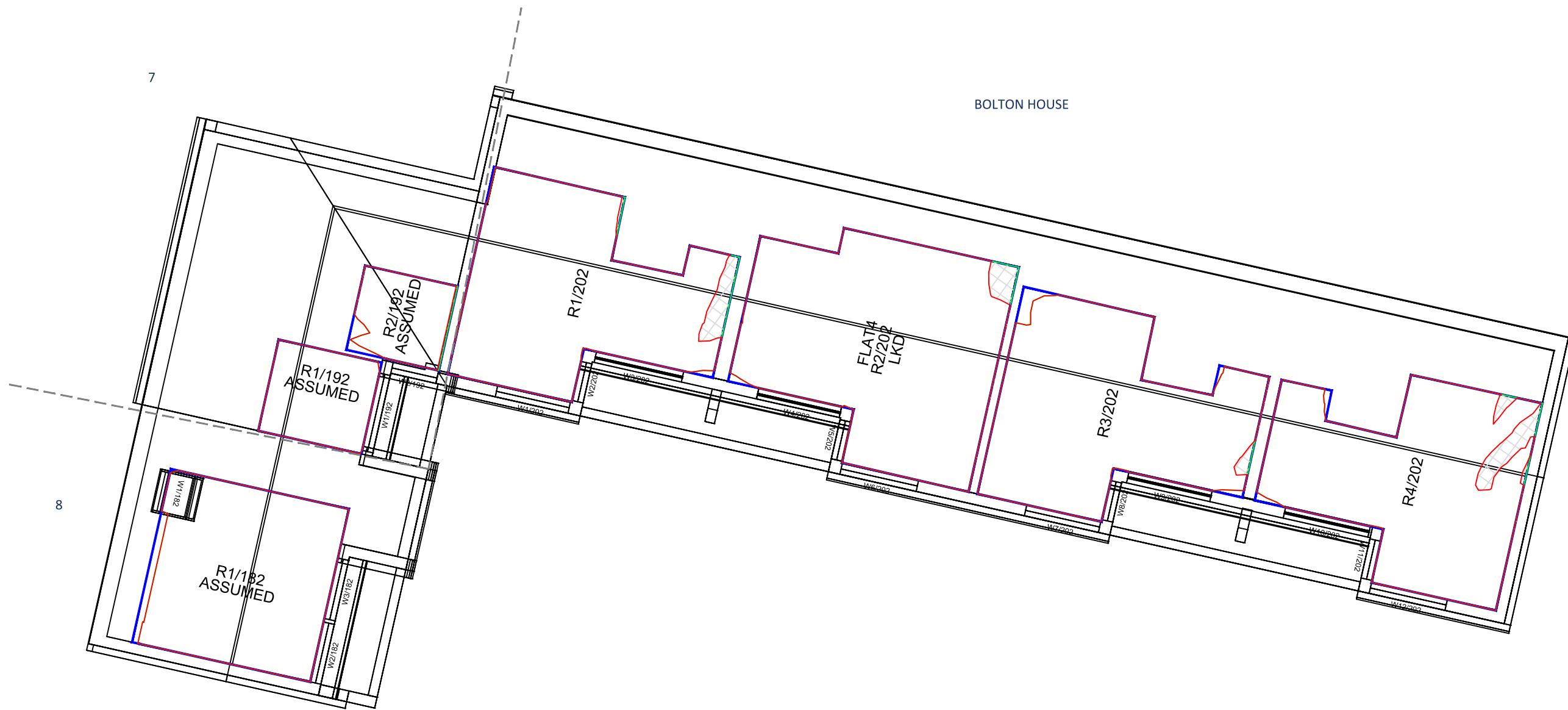
Scale: 1:175@ A3

Date: OCT 20

Dwg No: **P1870/NSL/41**

Rel: **20**








2nd FLOOR

Sources: Point2Surveyors
Scan data (received 13/08/18)
Woodlands and Masters.rcp

Site Photos (received 20/08/18)

Rolfe Judd
Proposed Info (received 25/03/19)
190325-6057-Massing.skp
Proposed Info (received 08/03/19)
6057 - Options Appraisal - Option 01A.skp
Proposed Info (received 28/11/18)
6057-Geo Located Massing.dwg

- Key:
-  Existing NSL Contour
 -  Proposed NSL Contour
 -  Region of Loss / Gain

Project: Woodlands and Masters House, London

Title: No-Sky Line Contours
Proposed Scheme received 25/03/2019
Bolton House, 7-8 George Mathers Road

Scheme Confirmed:

Date:

Drawn By:
BZW/CJ

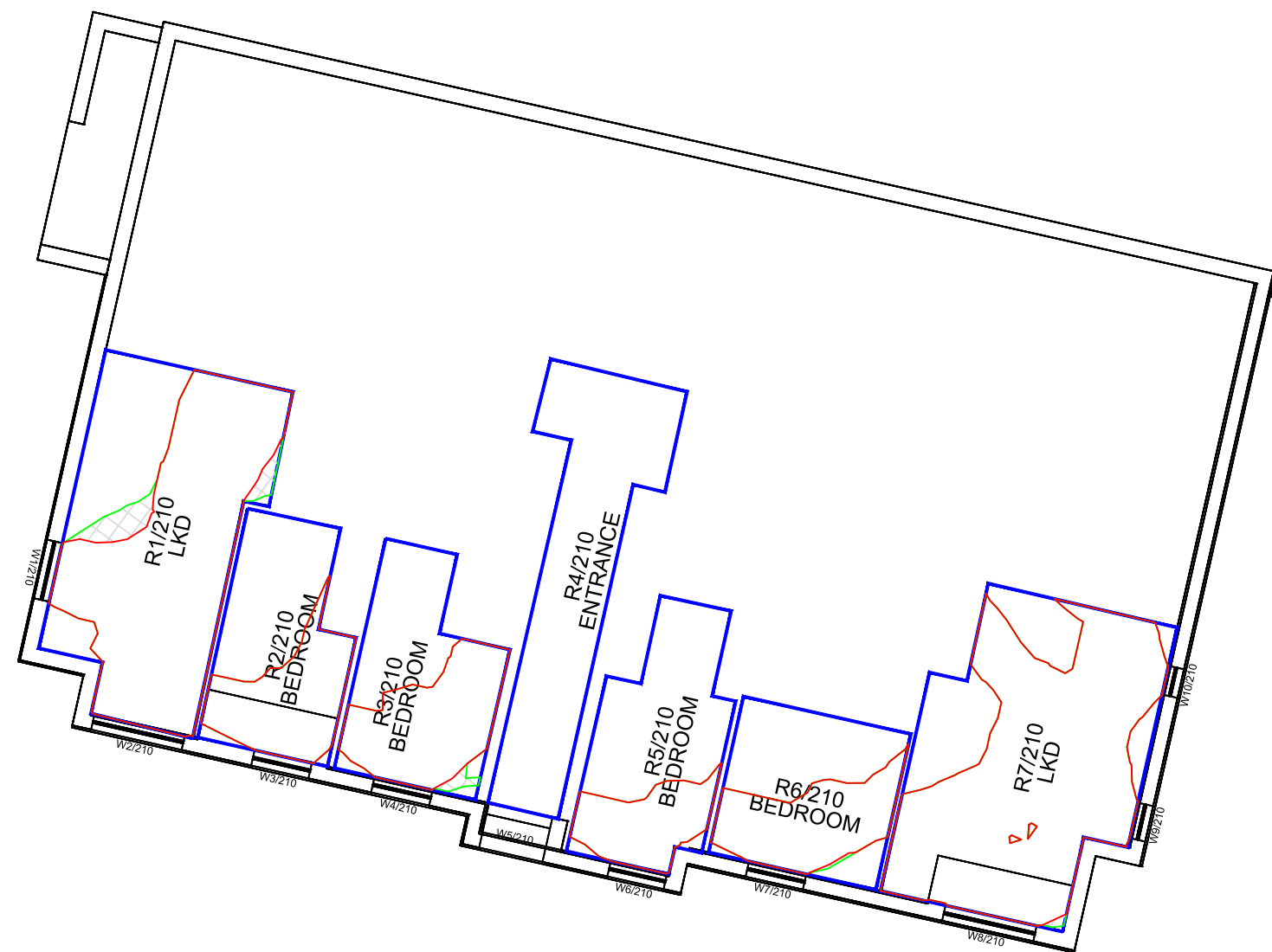
Scale:
1:175@ A3

Date:
OCT 20

Dwg No:
P1870/NSL/42

Rel:
20








GROUND FLOOR

Sources: Point2Surveyors
 Scan data (received 13/08/18)
 Woodlands and Masters.rcp
 Site Photos (received 20/08/18)
 Rolfe Judd
 Proposed Info (received 25/03/19)
 190325-6057-Massing.skp
 Proposed Info (received 08/03/19)
 6057 - Options Appraisal - Option 01A.skp
 Proposed Info (received 28/11/18)
 6057-Geo Located Massing.dwg

Key:

-  Existing NSL Contour
-  Proposed NSL Contour
-  Region of Loss / Gain

Project: Woodlands and Masters House, London

Title: No-Sky Line Contours
 Proposed Scheme received 25/03/2019
 Freeman House, 10 George Mathers Road

Scheme Confirmed:

Date:

Drawn By:
 BZW/CJ

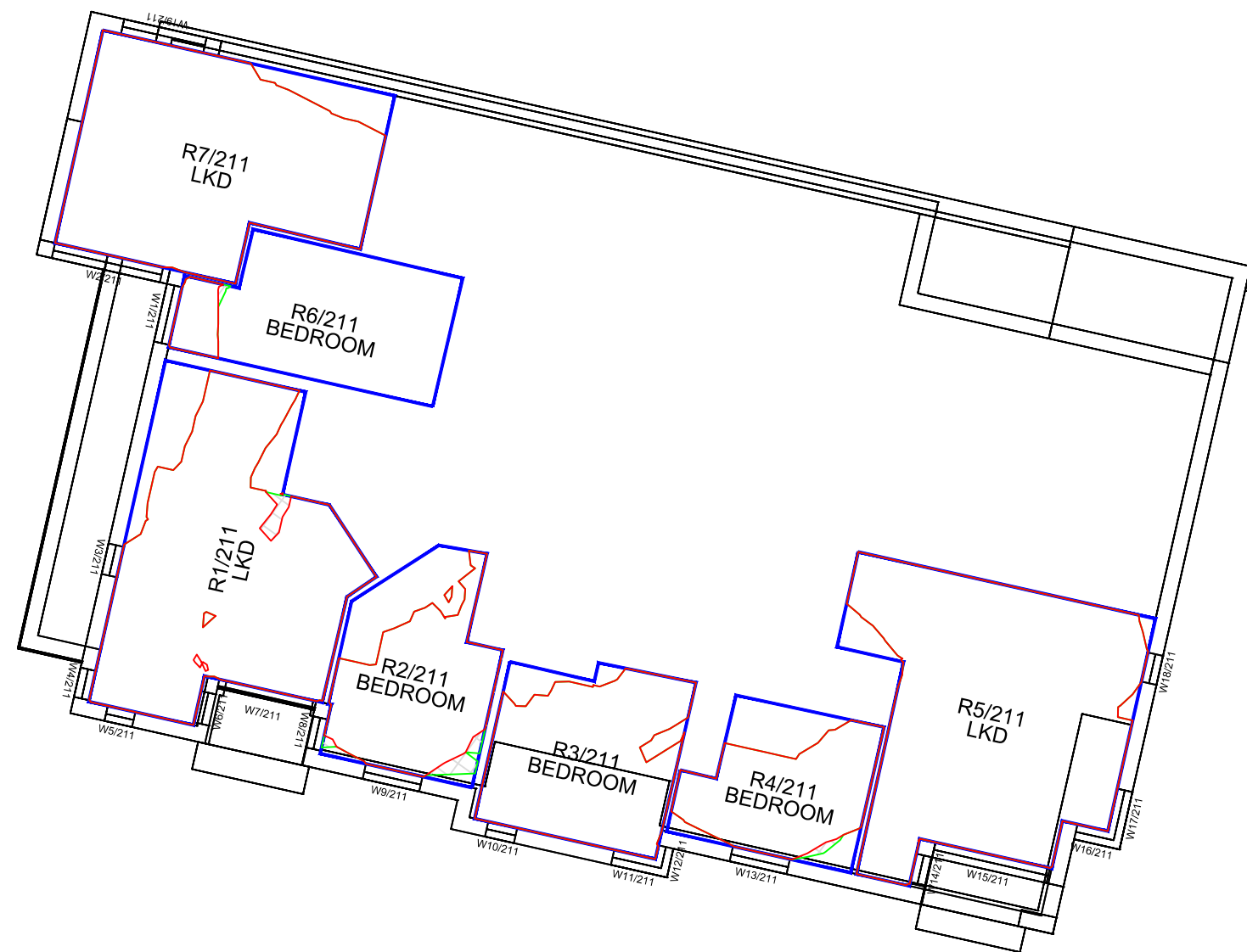
Scale:
 1:175@ A3

Date:
 OCT 20

Dwg No:
P1870/NSL/43

Rel:
20








1st FLOOR

Sources: Point2Surveyors
 Scan data (received 13/08/18)
 Woodlands and Masters.rcp
 Site Photos (received 20/08/18)
 Rolfe Judd
 Proposed Info (received 25/03/19)
 190325-6057-Massing.skp
 Proposed Info (received 08/03/19)
 6057 - Options Appraisal - Option 01A.skp
 Proposed Info (received 28/11/18)
 6057-Geo Located Massing.dwg

Key:

-  Existing NSL Contour
-  Proposed NSL Contour
-  Region of Loss / Gain

Project: Woodlands and Masters House, London

Title: No-Sky Line Contours
 Proposed Scheme received 25/03/2019
 Freeman House, 10 George Mathers Road

Scheme Confirmed:

Date:

Drawn By:
 BZW/CJ

Scale:
 1:175 @ A3

Date:
 OCT 20

Dwg No:
P1870/NSL/44

Rel:
20








2nd FLOOR

Sources: Point2Surveyors
 Scan data (received 13/08/18)
 Woodlands and Masters.rcp
 Site Photos (received 20/08/18)
 Rolfe Judd
 Proposed Info (received 25/03/19)
 190325-6057-Massing.skp
 Proposed Info (received 08/03/19)
 6057 - Options Appraisal - Option 01A.skp
 Proposed Info (received 28/11/18)
 6057-Geo Located Massing.dwg

Key:

-  Existing NSL Contour
-  Proposed NSL Contour
-  Region of Loss / Gain

Project: Woodlands and Masters House, London

Title: No-Sky Line Contours
 Proposed Scheme received 25/03/2019
 Freeman House, 10 George Mathers Road

Scheme Confirmed:

-

Date:

-

Drawn By:

BZW/CJ

Scale:

1:175@ A3

Date:

OCT 20

Dwg No:

P1870/NSL/45

Rel:

20

