

# 05 Development Summary

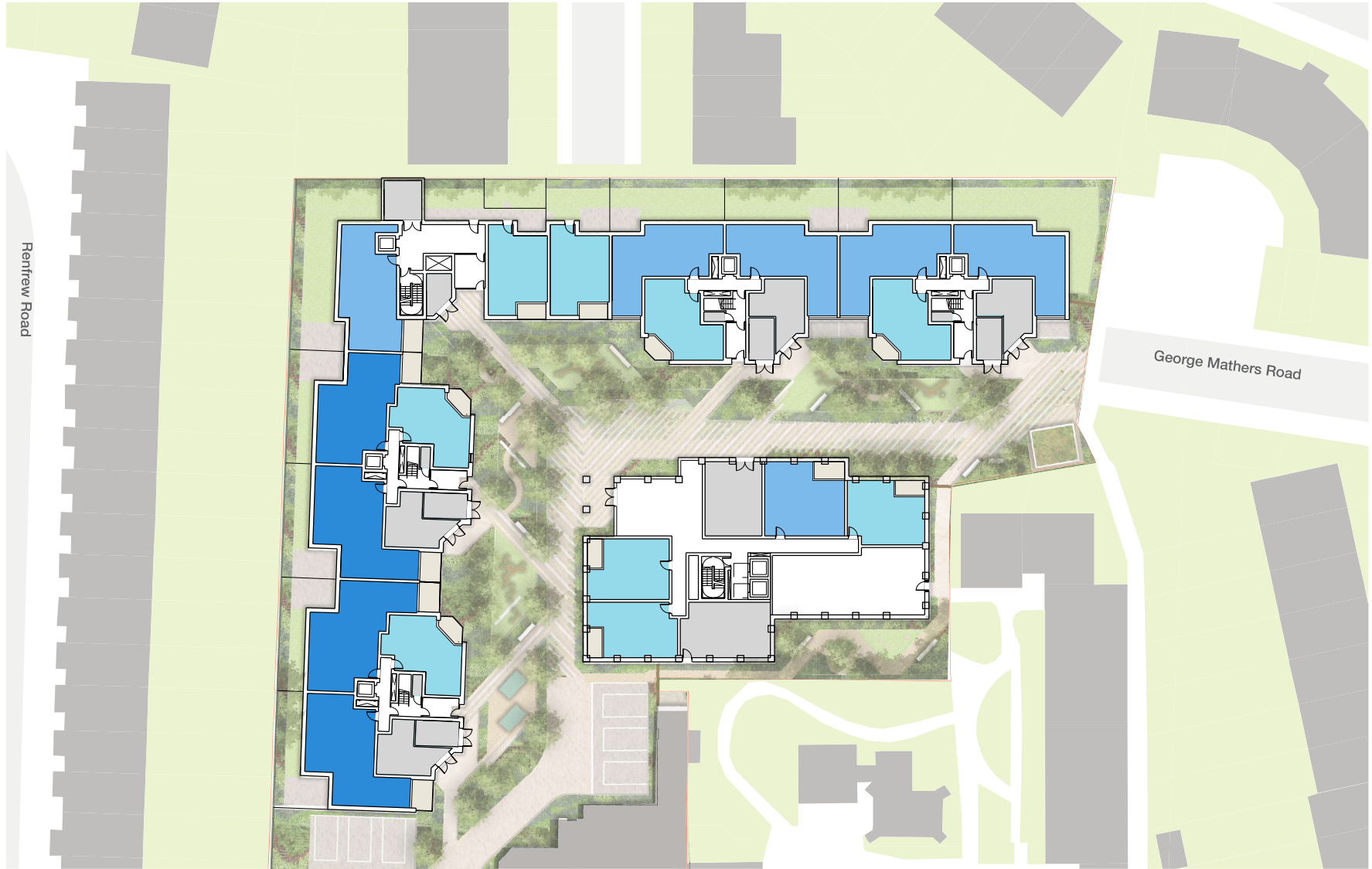
# Masterplan



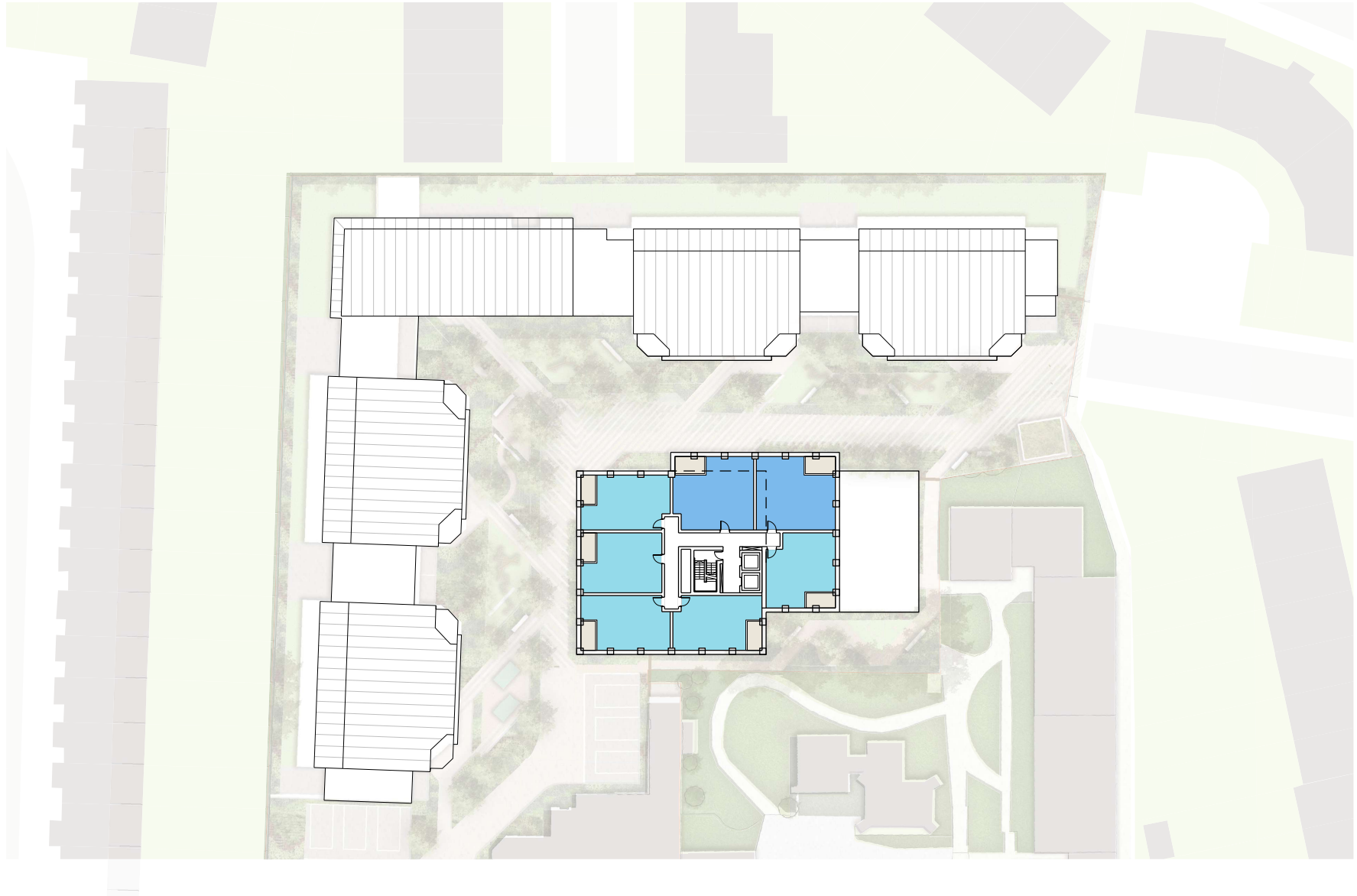
Site Masterplan

# Ground Floor

- Key
- Studio
  - 1 Bed
  - 2 Bed
  - 3 Bed

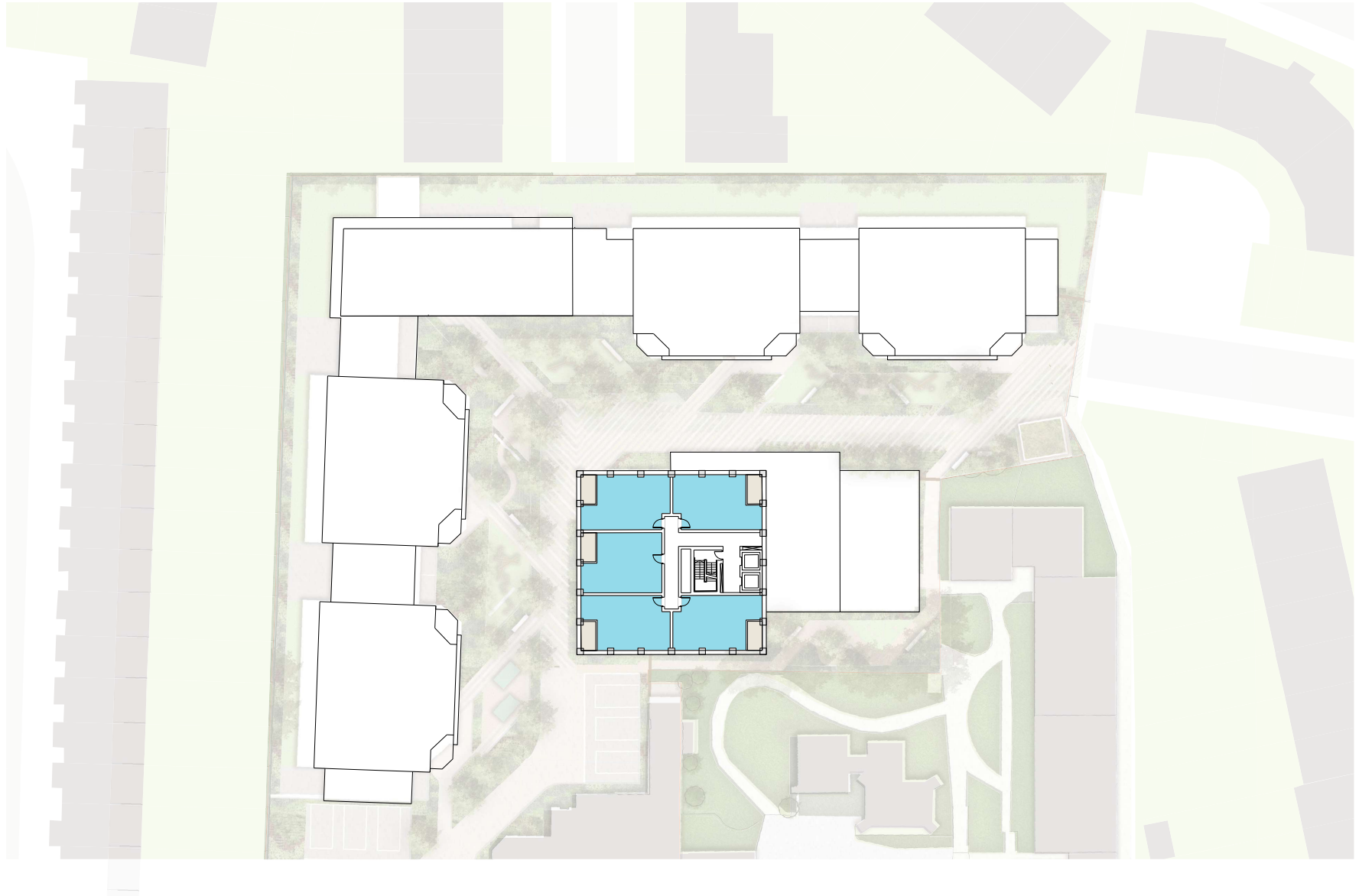


Fifth to Ninth Floor











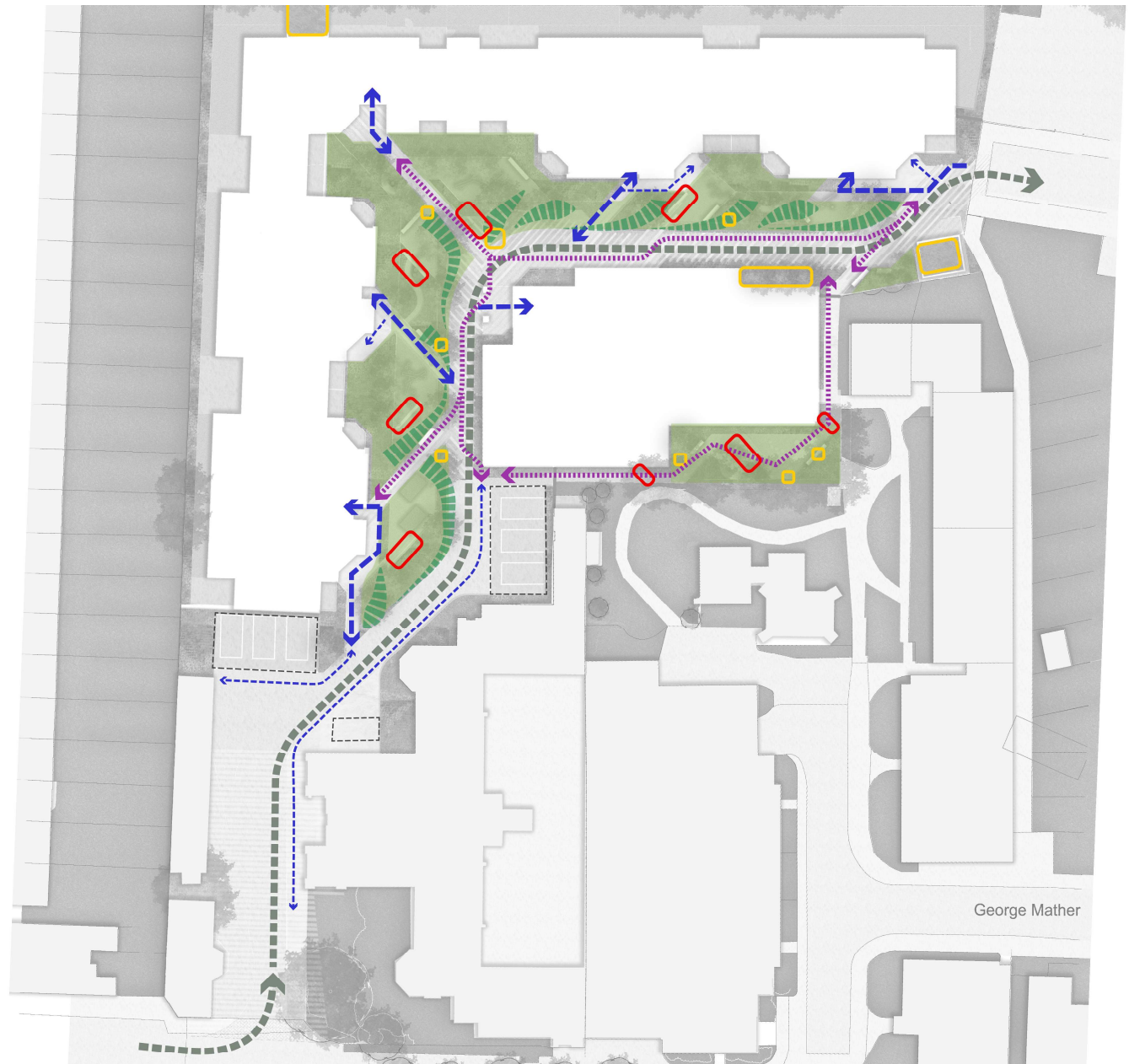


Tenth to Fifteenth Floor

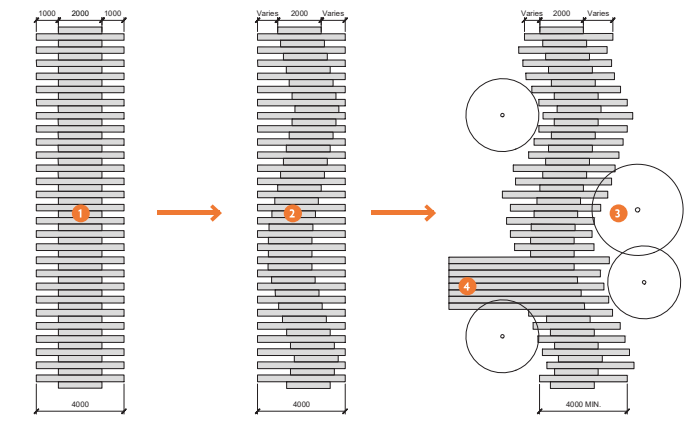


# Landscape Concept

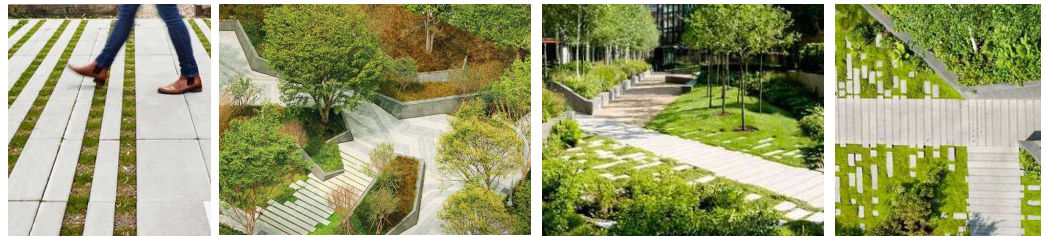
-  Curated ecology: A suite of ecological interventions could include bird/bat boxes, an insect hotel, meadow planting, butterfly mounds, gravel areas and a stumpy garden.
-  Controlled one-way refuse and fire tender access route
-  Pedestrian circulation
-  Eco-trail through the space creates a leisure pathway linking play, seating and ecological interventions
-  Maximising the green
-  Using a green buffer to protect the play and defining seating areas.
-  Car parking and delivery
-  Framing space with vertical timber elements. These are located within the landscape providing a variety of functions including play and seating



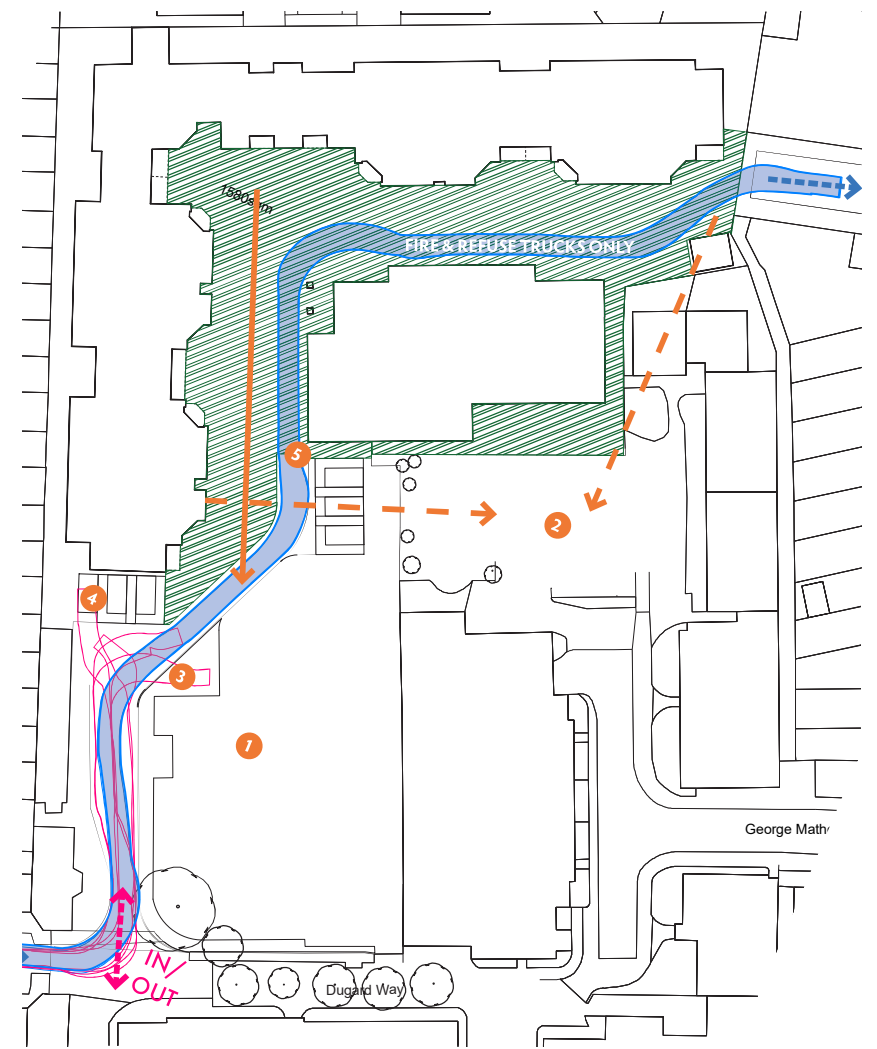
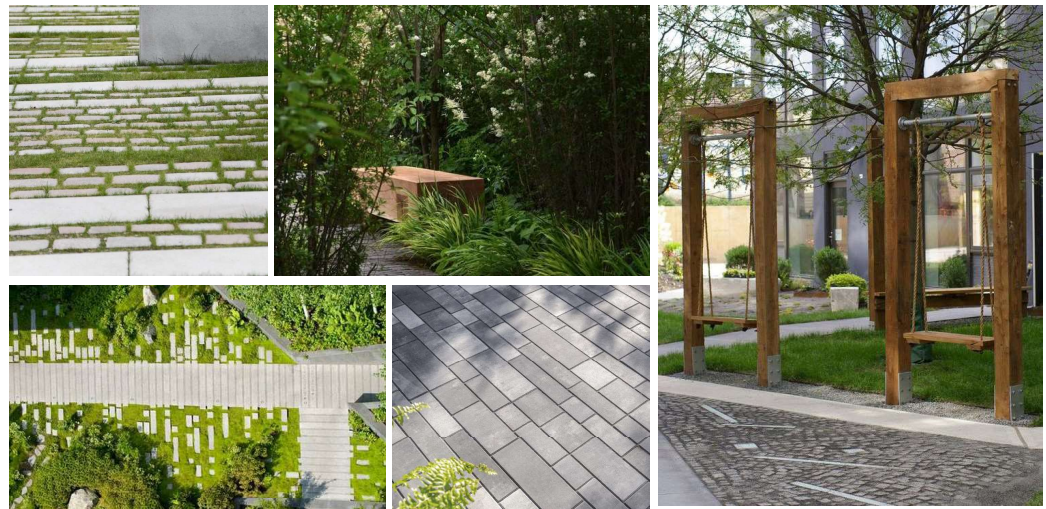
# Pedestrian and Vehicle Access



PATHWAY CONCEPT



PRECEDENT IMAGERY





# Landscape Concept

## LEGEND

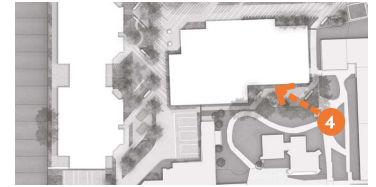
- 1 Mobility car parking bays (No. 5)
- 2 Van parking bay for theatre (No. 1)
- 3 Short stay car parking space (e.g. deliveries etc. No. 1)
- 4 Proposed trees
- 5 Feature paving
- 6 Stupery garden
- 7 Restricted one-way access (refuse and fire only)
- 8 Residential pathway



George Mather



# Landscape Concept



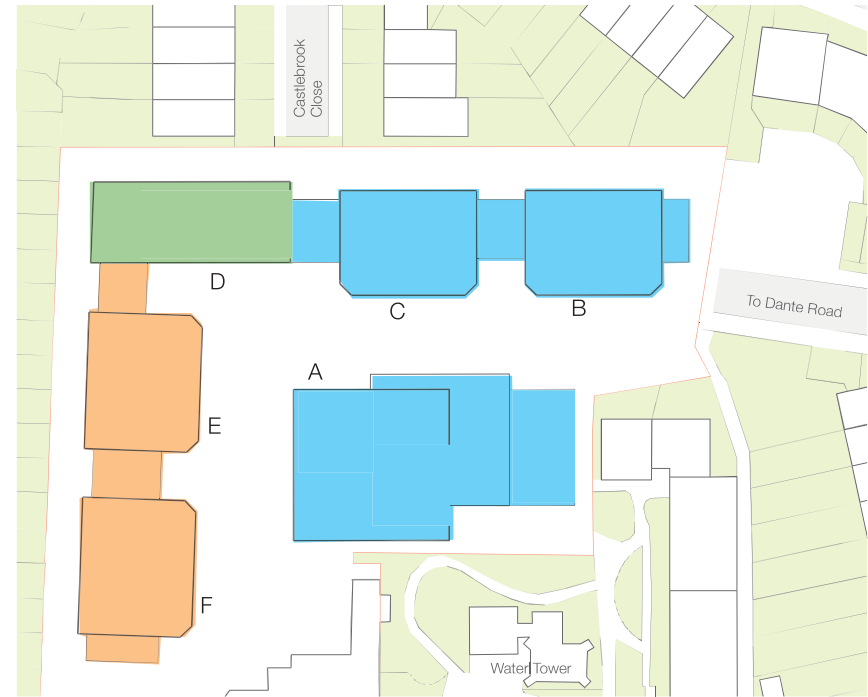
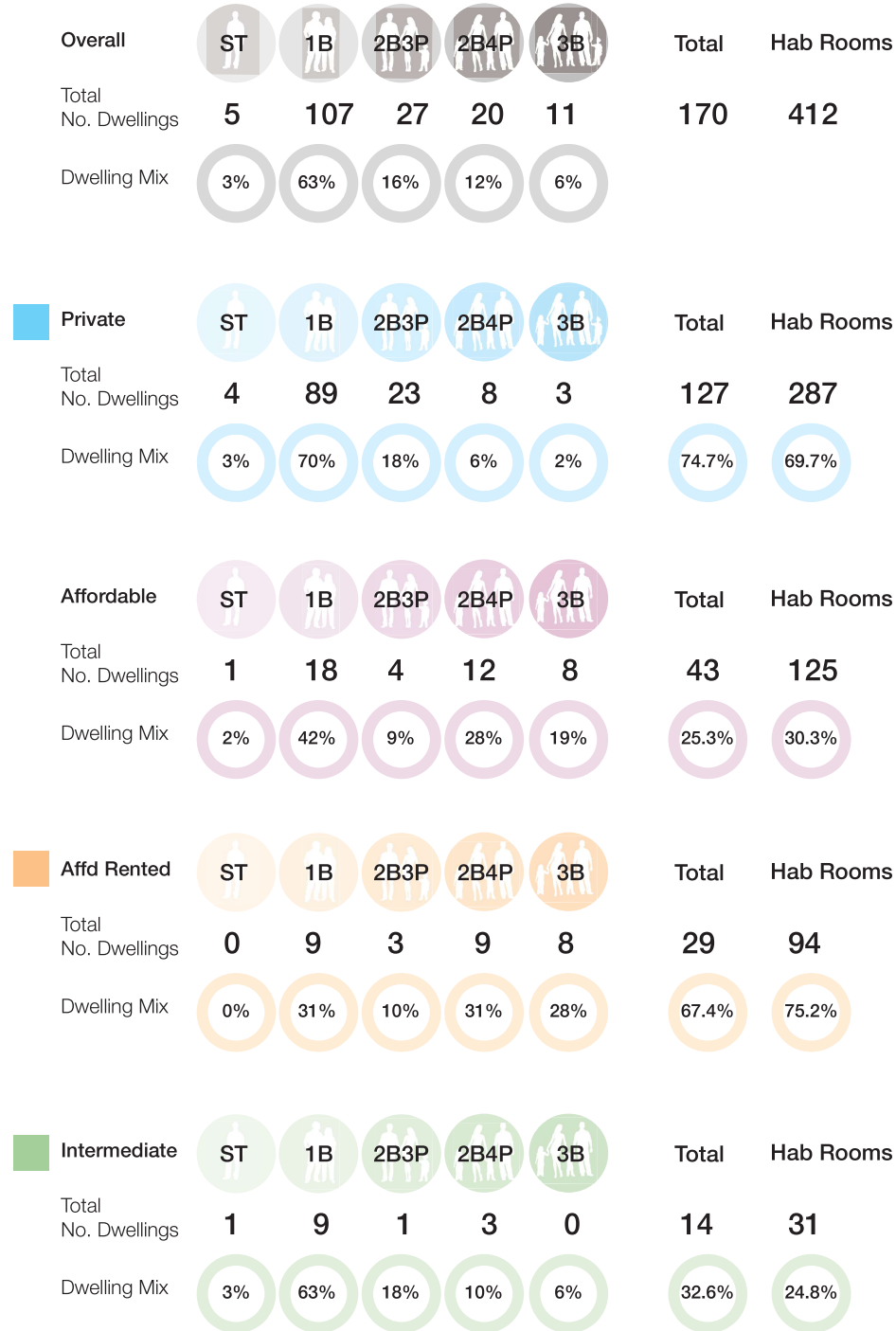


# Landscape Concept



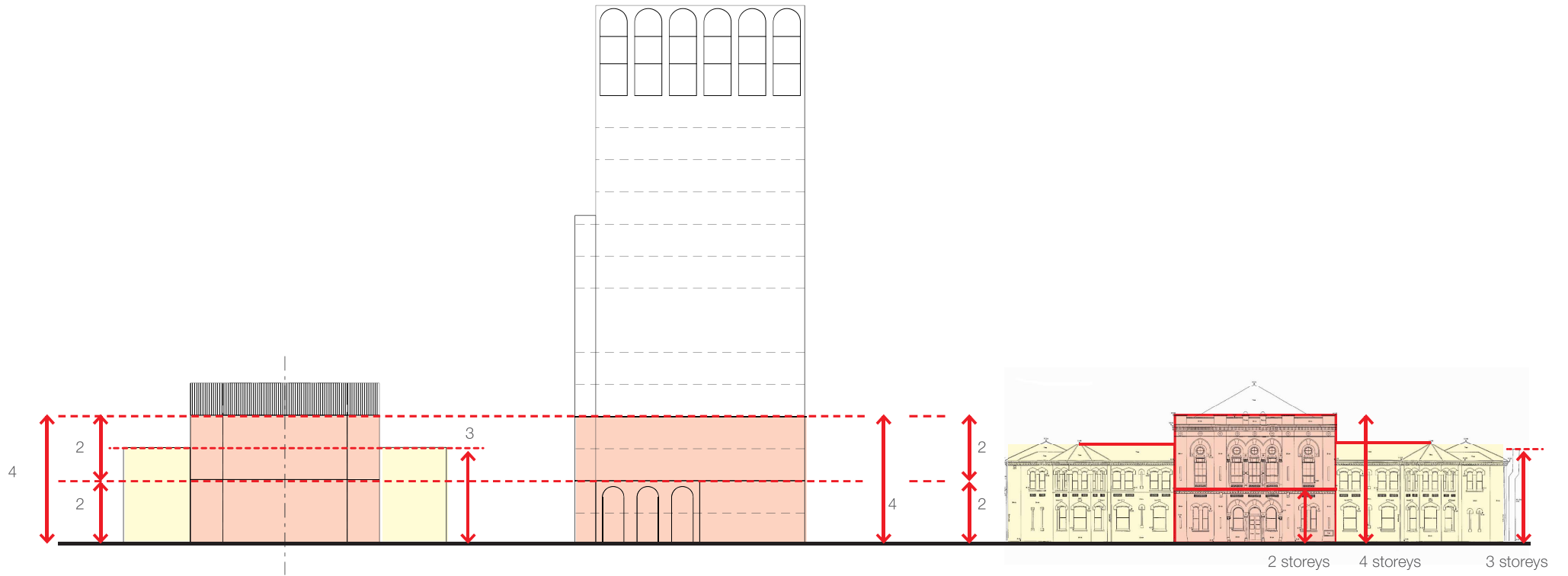


# Development Tenure and Dwelling Mix

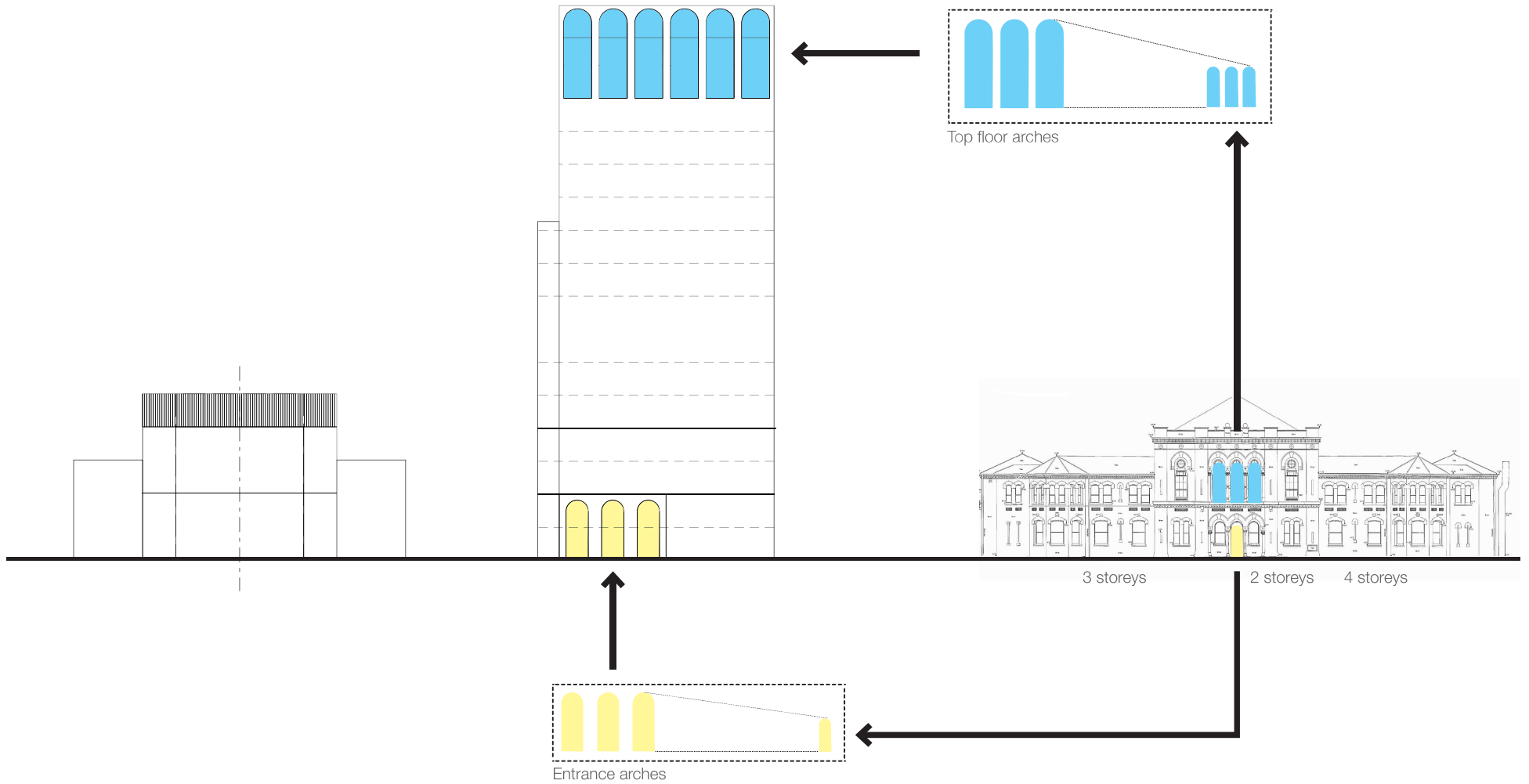


# 06 A Sympathetic Architecture

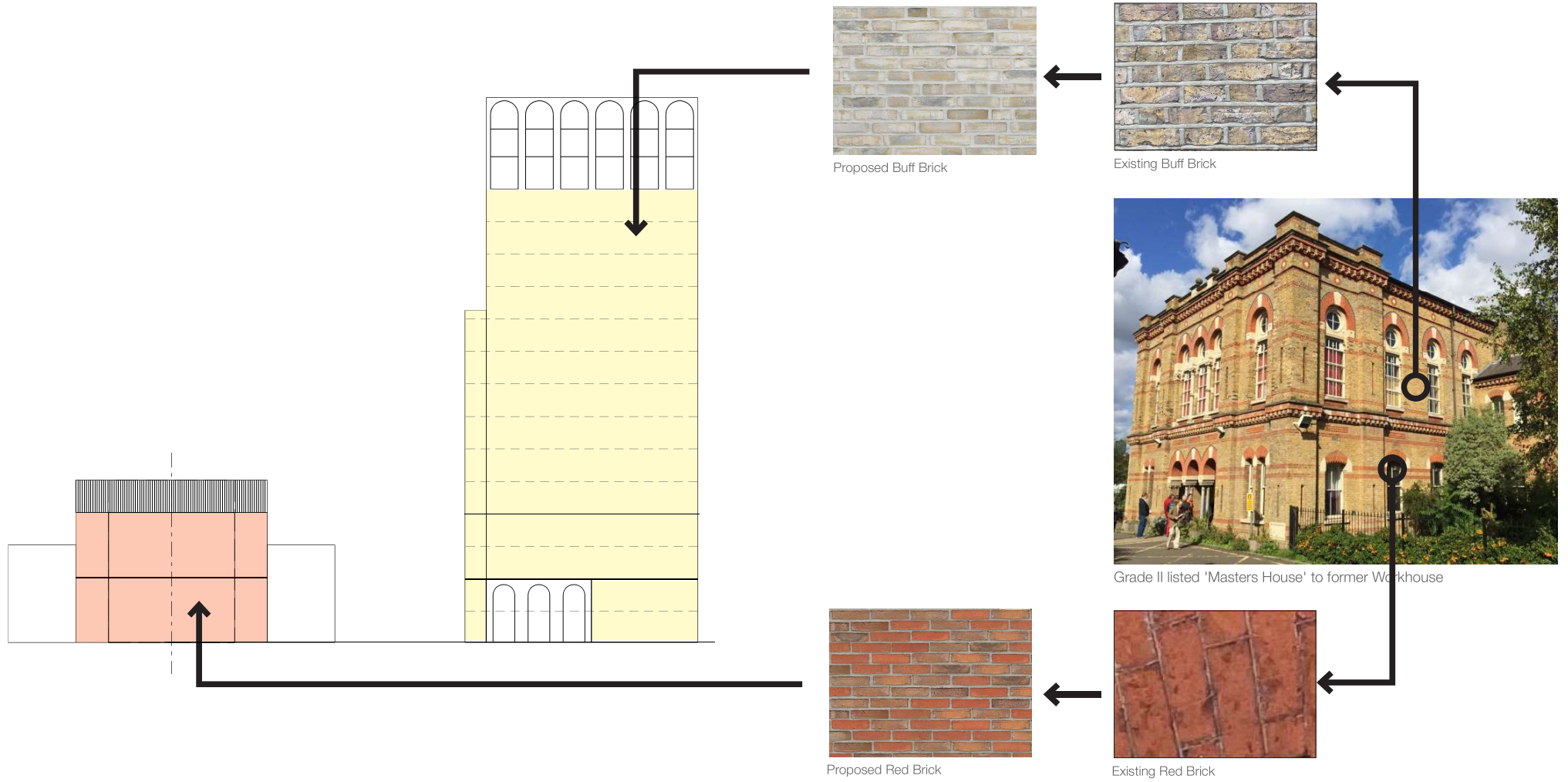
# Linking building scales across the site



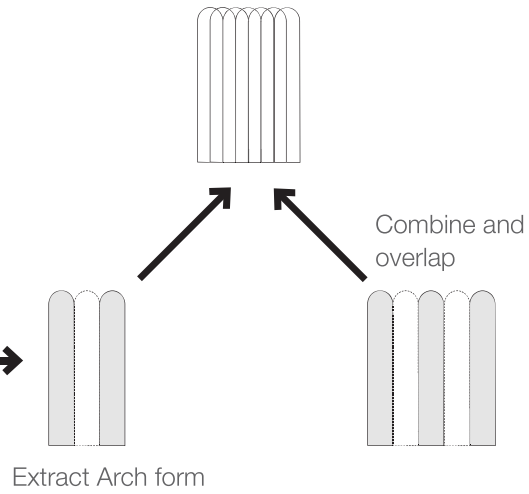
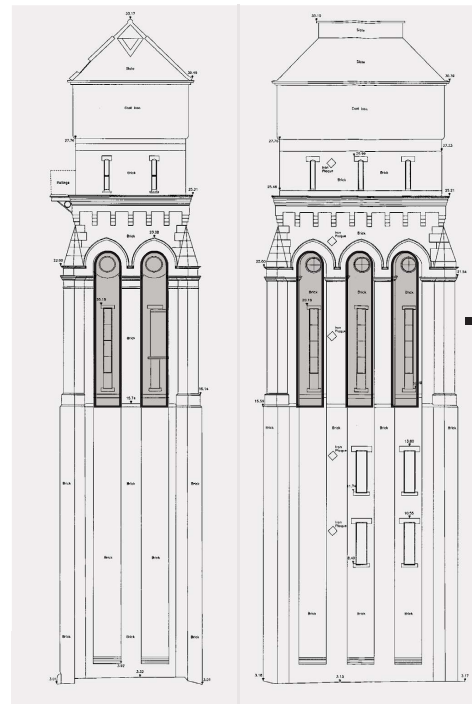
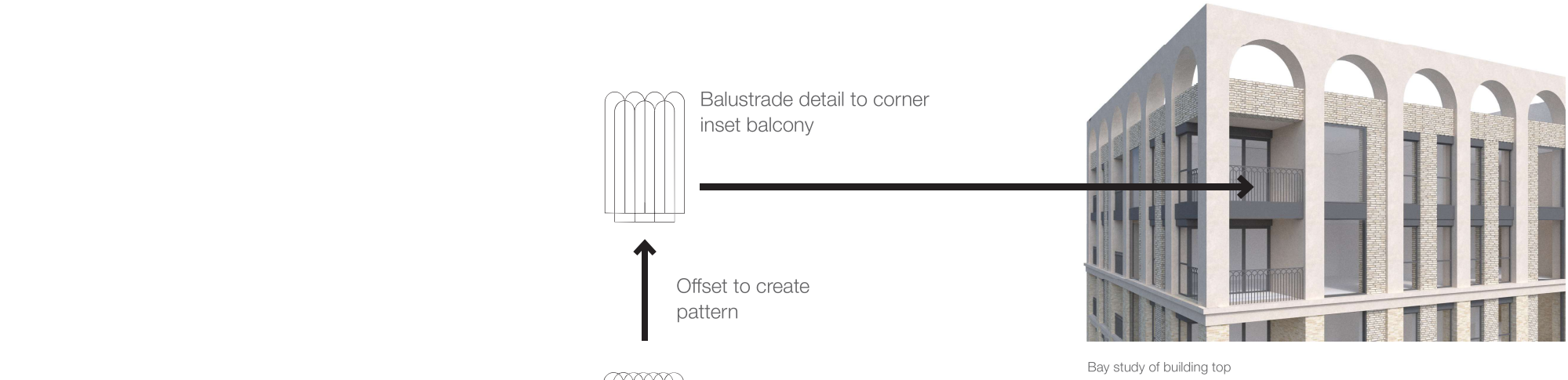
# Linking Building Features across the site



# Linking building materials across the site



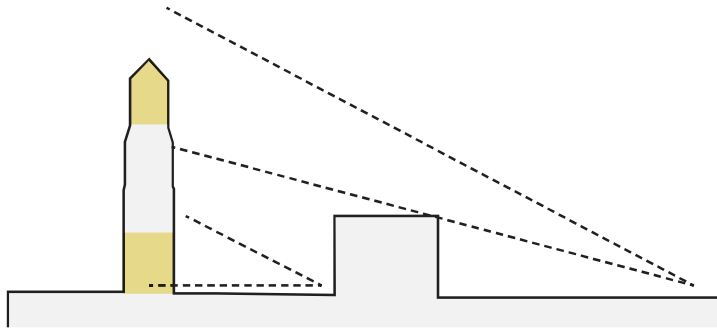
# Details Inspired by Water Tower



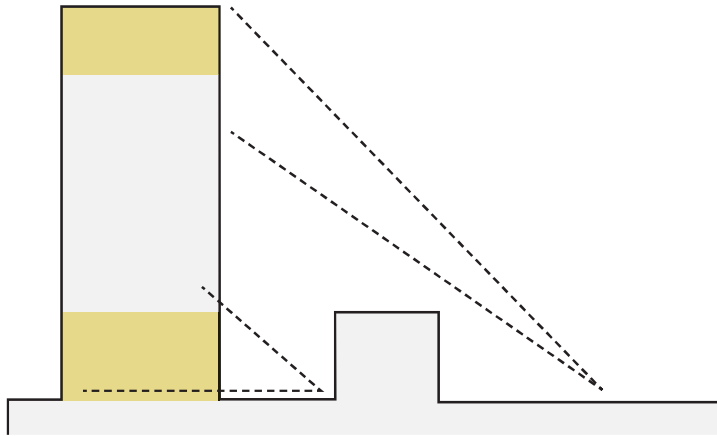
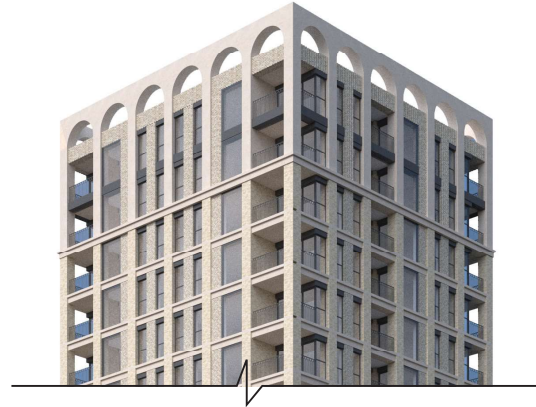
Bay study of two storey emphasis to bottom 4 storeys



# Design of top to Building A



Water tower elements visible at short and long range



Building elements visible at short and long range





Illustrative view adjacent to Master House





Illustrative view of corner entrance and route to George Mathers Rd

