

LIFT STATION 9 REPLACEMENT



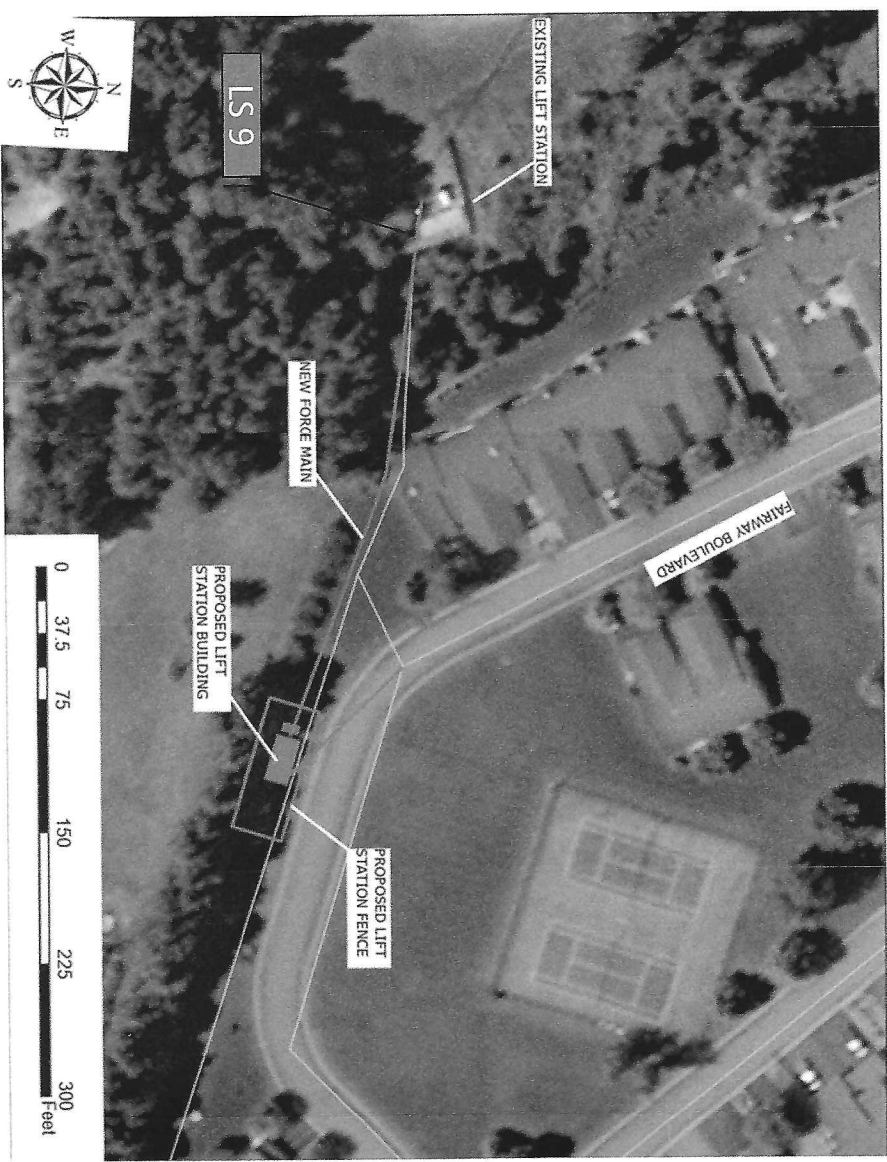
Susie Turner – Public Works Director – sturner@kalispell.com – 758-7852

Keith Haskins – City Engineer – khaskins@kalispell.com – 758-7727

Patrick Jentz – Engineer – pjentz@kalispell.com – 758-7859

Why are We Here?

- To discuss the capital replacement project for LS 9
- LS 9 replacement has been identified as a high priority project due to:
 - Aged facility conditions/failures
 - Current access limitation
 - Size is under capacity for current flows



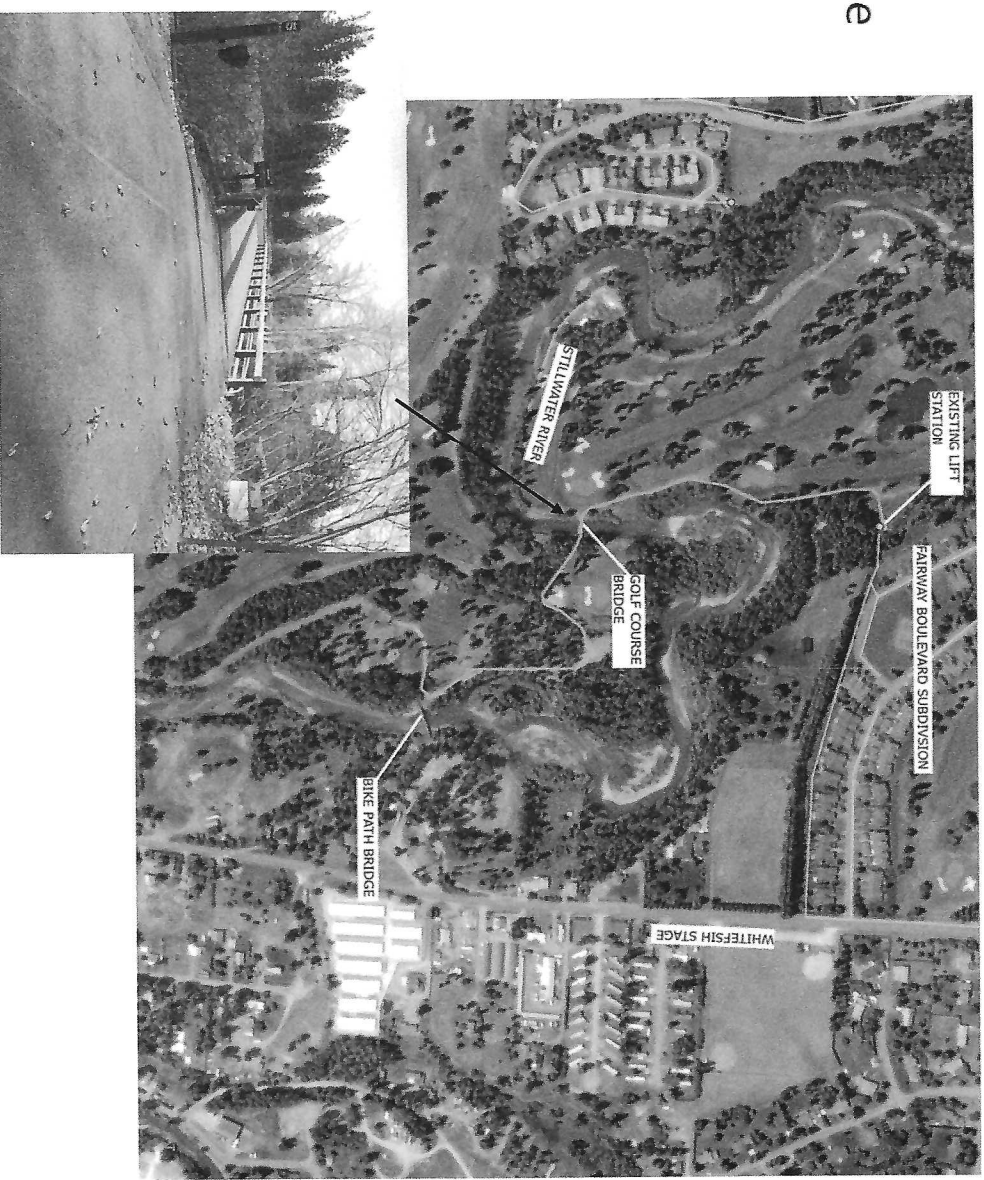
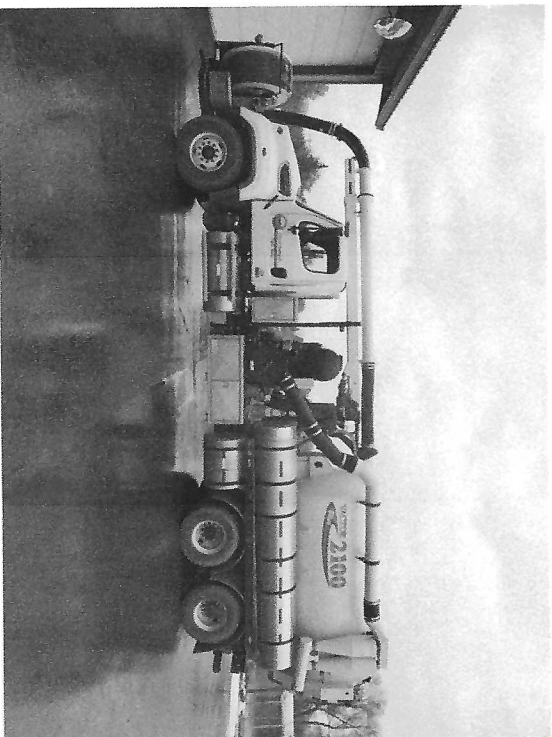
EXISTING LIFT STATION

- Service area
- Age
- Access



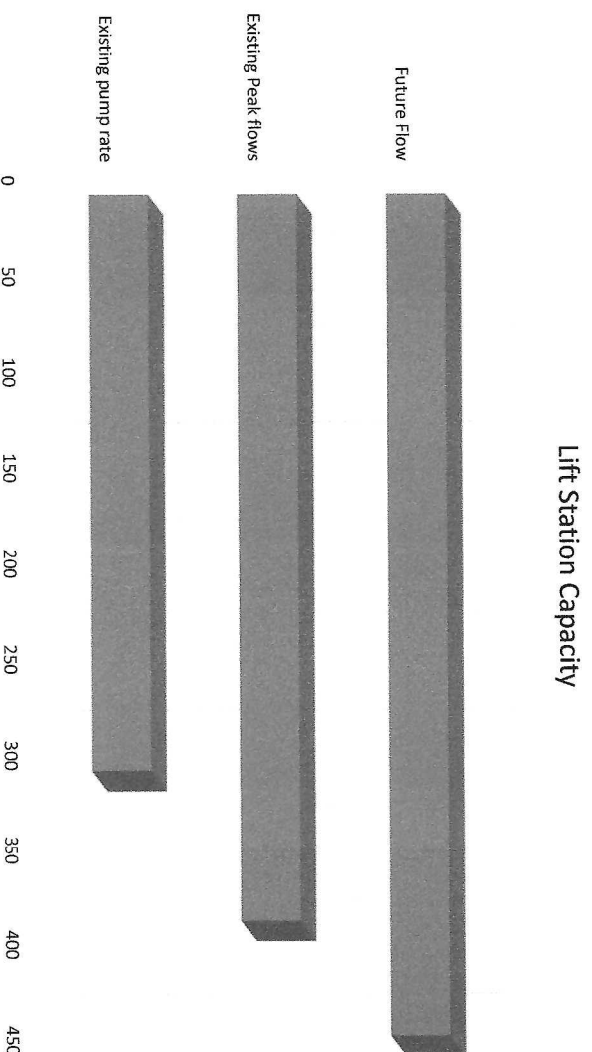
Access Limitations ^{KH1}

- Not accessible to Equipment
- Proper maintenance can not be performed
- Increase risk for failure
- Limits reconstruction capabilities



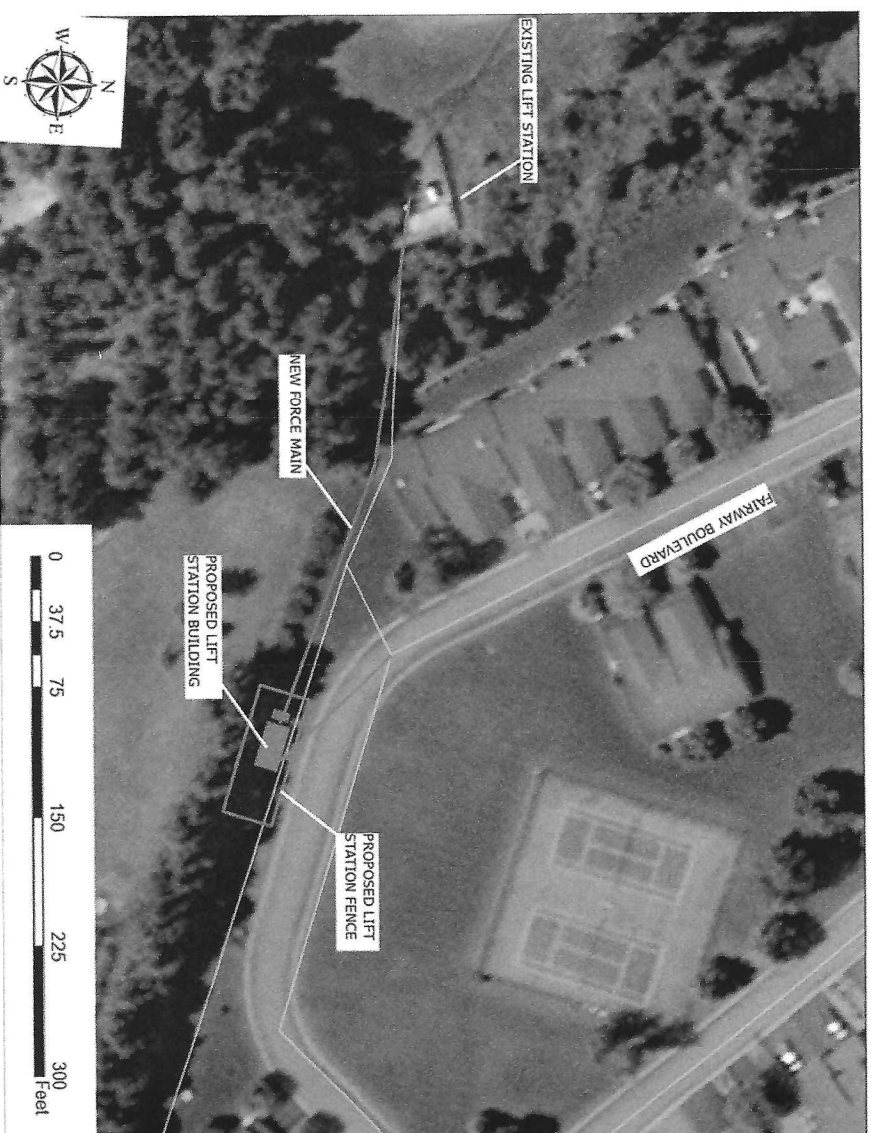
Existing and Future Capacity

- Today short term peak flows are 27% over allowable capacity
- Full build out short term peak flows are 47% over allowable capacity.



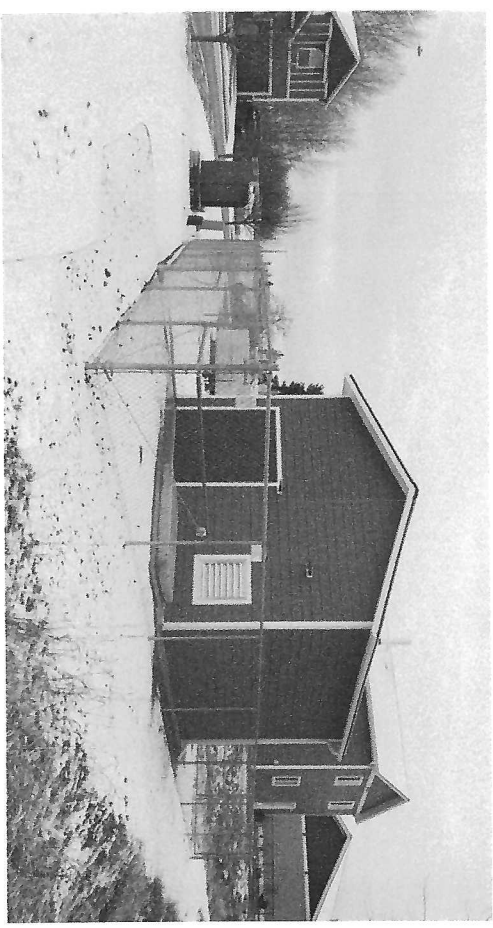
Reconstruction Location

- Reconstruct LS in existing Utility Easement



Similar Lift Station

Match colors of surrounding buildings
Fence
Lift Station Approximately 35x17' – single story



Questions/Comments/Considerations

- Anticipated Schedule
 - Design through 2021
 - Construction 2022
- We'd like to hear your thoughts.....
 - Questions or Concerns about the project?

