

**GET AWAY FROM
IT ALL!!**



Ozark Country

"WHEN PEOPLE COME TO LOST MINE"



The day is bathed in sunlight filtered through a leafy screen that seems to always be kept in motion by delightful refreshing breezes. The lake is so clear and blue that you doubt at first that it can be real. Thousands of delightful caves await your exploration. The air is so free of pollution that the night sky sparkles with the light from a thousand stars that appear but an arm's reach away. A home nestled in the quiet woods of these gently rolling Ozark hills can bring to you and your family a remarkable new "way of life" whether for vacations or retirement.



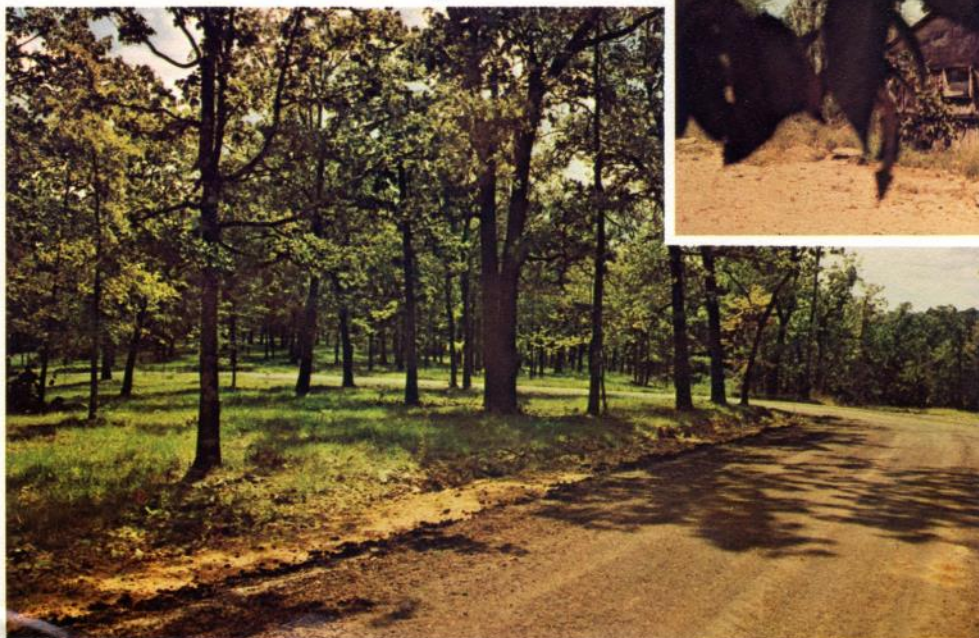
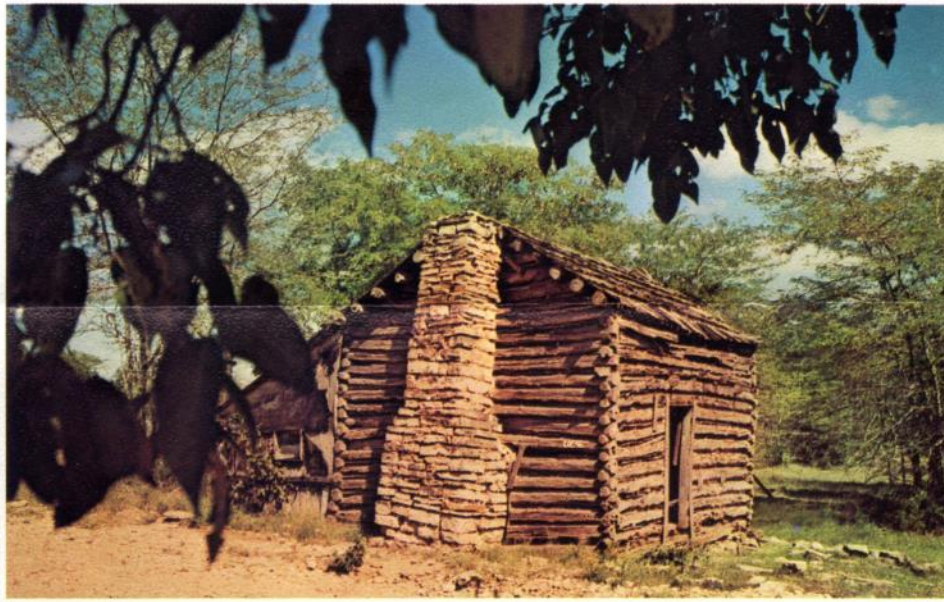
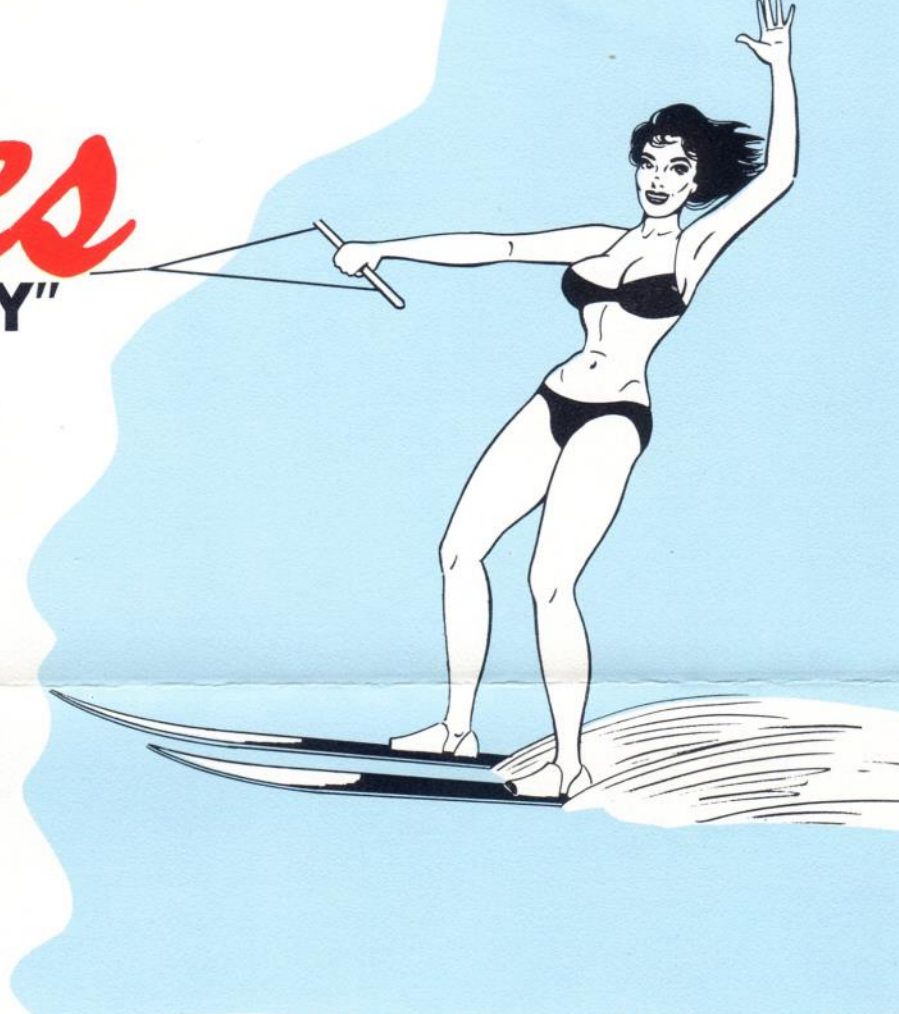
Here nature has given her best for those who will come to enjoy it. Horseback trails wind through woods and across meadows little changed by the passing of time. The horseman, hiker, photographer and nature lovers of any type will find these hills and sights to their own delight.

Lost Mine Airport is within easy reach. Whether you come for a short visit, or longer vacation, the 3000 ft. bituminous hard surfaced strip will provide accessibility to population centers of surrounding states. Your lot will be an easy walk from the strip.

States

THEY COME TO STAY"

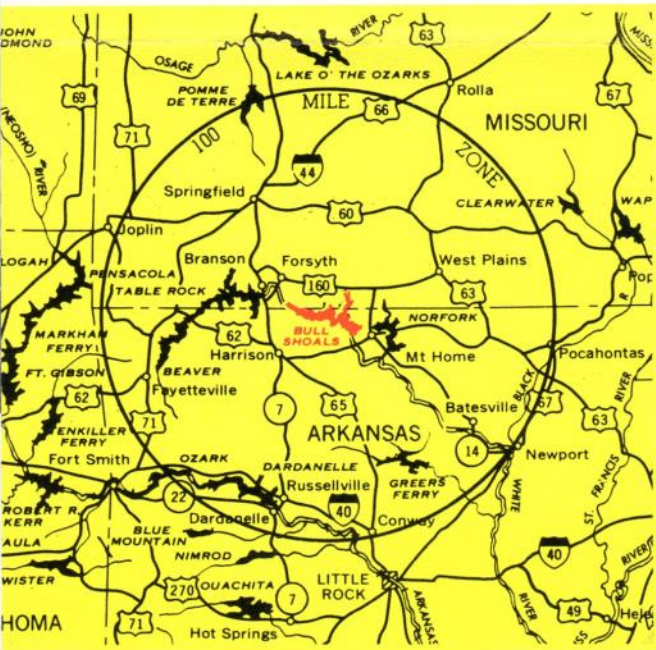
The Bull Shoals area has long been a favorite of ardent sportsmen. The variety of wild life that abounds in the hills surrounding this tranquil setting is a delight for the naturalist and a challenge to the hunter. Fishermen seem relentless in their pursuit of the bass, trout, catfish, etc., that lure them to the rocky points and placid secluded bays. Divers, power boaters, and water skiers all marvel at the beauty of this spectacular lake. Recognizing the charm and beauty of this countryside as the original homesteaders knew it, the developers are intent upon changing only what is absolutely necessary to provide property owners with the finest in Ozark building sites. The lots are mostly $\frac{5}{8}$ acre in size with a selection of larger plots exceeding one acre. The lots are level or gently sloping to permit the economical building of homes.



All road construction has been carefully planned to insure that erosion and maintenance costs are kept at a minimum. Roads within the development are being hard surfaced with a bituminous pavement to give property owners dust free, all weather, access to their property.



The Ozark Country Estates project is the culmination of many months of effort by three Iowa pilots. They first came to Dugginsville area seeking a remote and unspoiled area where they could build second homes to enjoy with their families the little known "Lost Mine" area. They found here the opportunity to build for others the type of community that they sought for themselves.



Dugginsville and the Lost Mine area are easily accessible by automobile by paved state highways. Missouri highway 160 reaches Bull Shoals Lake at Theodosia. Travel state highway P south to NN. This recently reconstructed bituminous highway meanders easterly to reach the lake and brings the motorist to Lost Mine Road.



Come and see for yourself
Write
Ozark Country Estates
Dugginsville, Missouri 65639

or call
Grant Finley
712-755-5237

Ray Tredway
712-755-5364

Don Tweedy
515-992-3143

Lane Trimble
Theodosia, Missouri 65761
417-273-4985