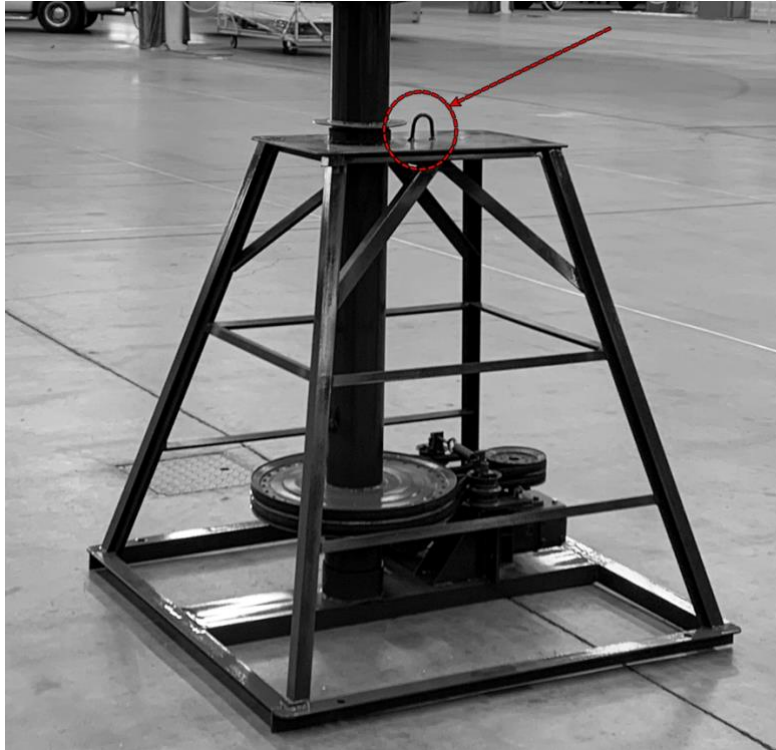
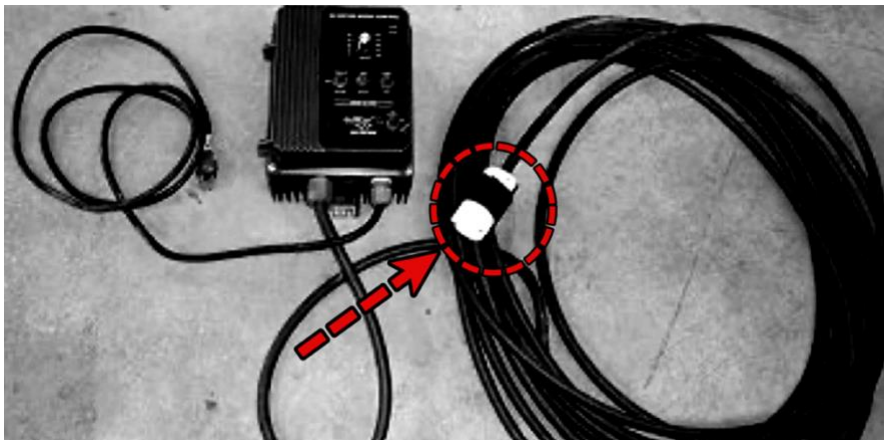


Installation Instructions for a ProWalk Freestyle Walker

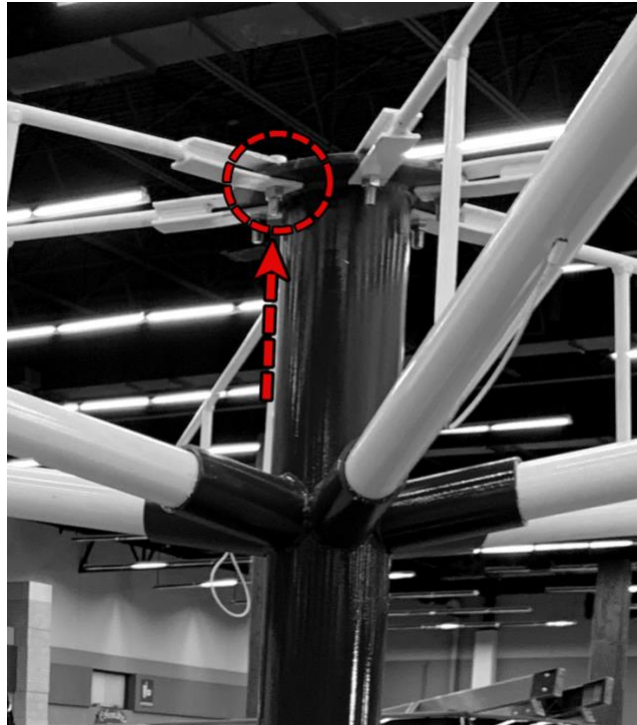
1. Remove both additional vertical angle iron securing bars located on opposite corners of base and then remove all panels. Lift base with picking eye and mount onto the concrete pad, securing the base with washer and nuts.



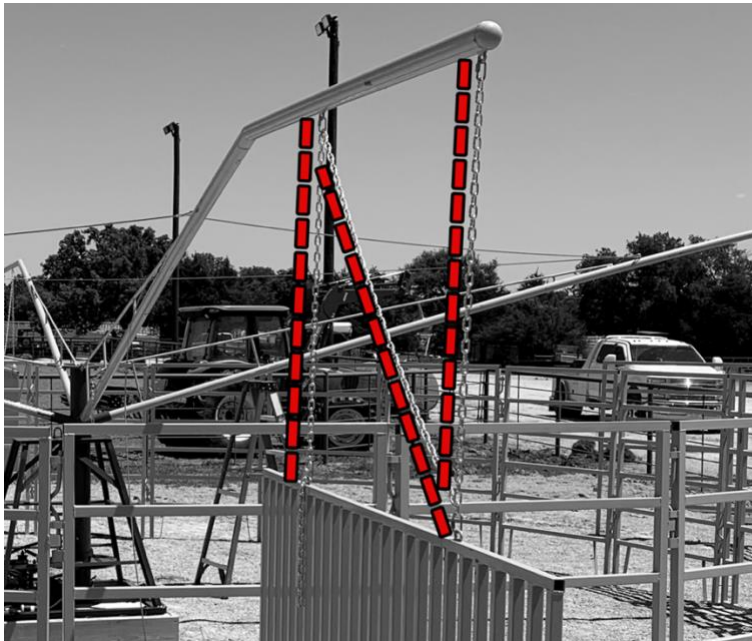
1. Previous 2021 Models-Using a Philips screwdriver, remove the large plug on the 55' cord and mark where each wire was removed, this wire is pulled through the conduit to the walker base, after it has been pulled through conduit, it can be reattached correctly. **Incorrect re-installation of plug can cause permanent damage to controller and void warranty on the controller and any other components affected.** Note: All controllers are tested prior to shipping and pass final inspection for quality assurance. 2021 Models and later have sealed plug using a 3" conduit the entire plug will be pulled through conduit without removing plug end.



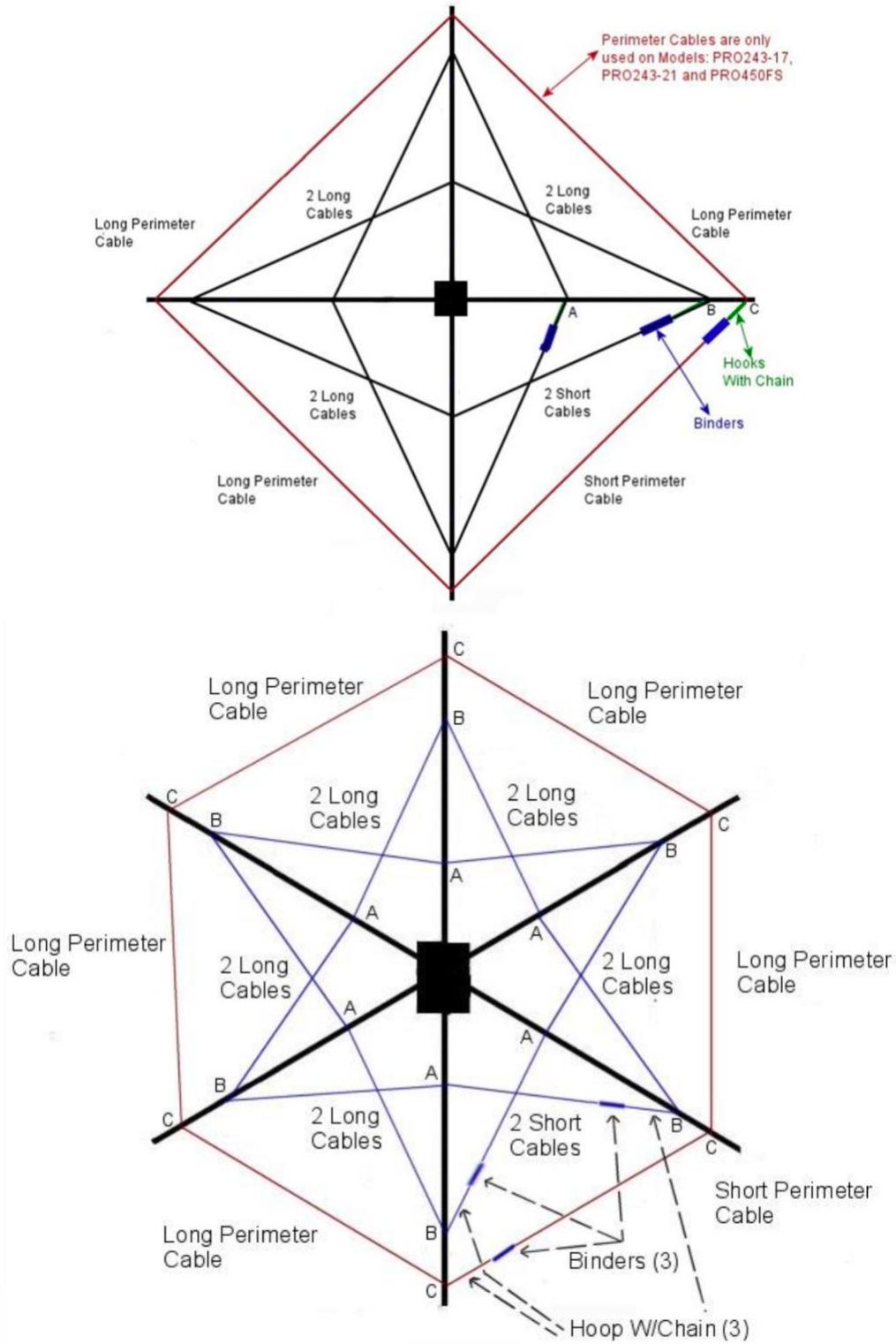
2. Mount the controller within 55 feet of walker base.
3. Install arms into the Walker base and secure with nut and bolt provided.



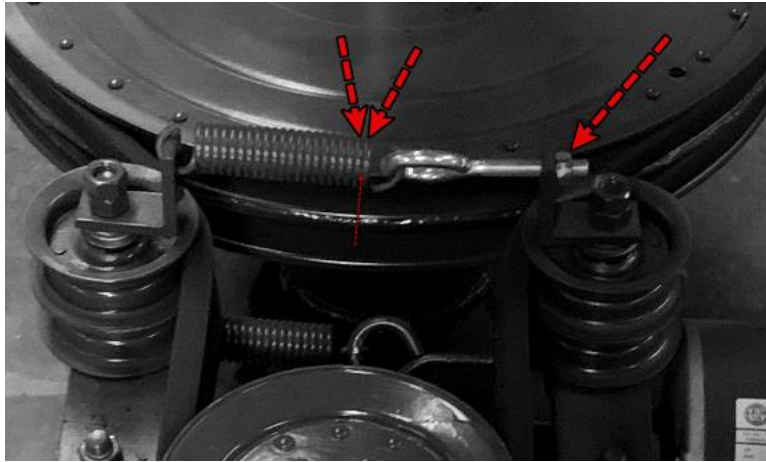
4. Attach hanging dividers to each arm using included hardware. The chain pattern will be a "N" as pictured. Make sure after all panels are installed, using a level, that they are level. The top of the divider should be approximately 6 feet from the ground.



5. Attach Cross Cables in accordance with proper diagram. Find further instructions for cables in manual at <https://prowalkusa.com/prowalk-owners-manual>

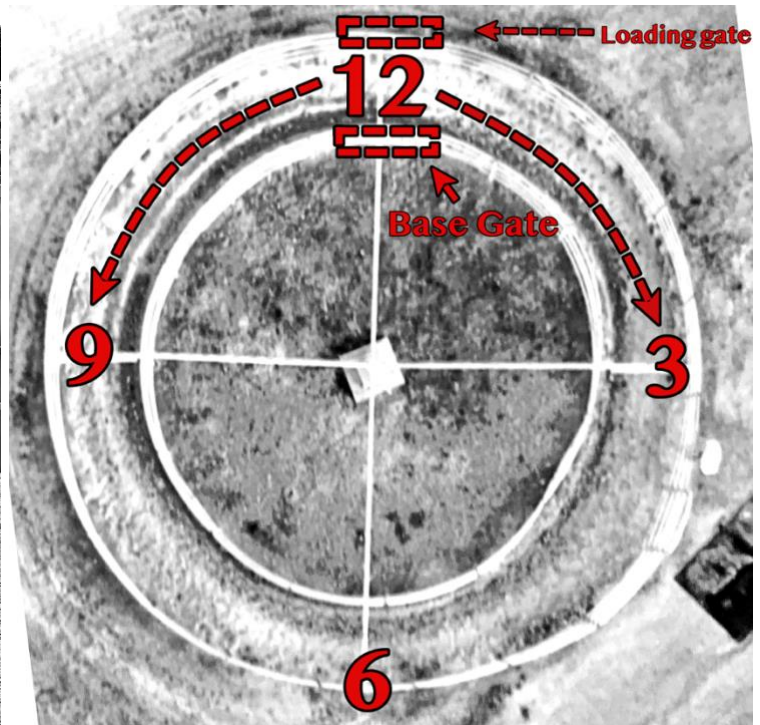
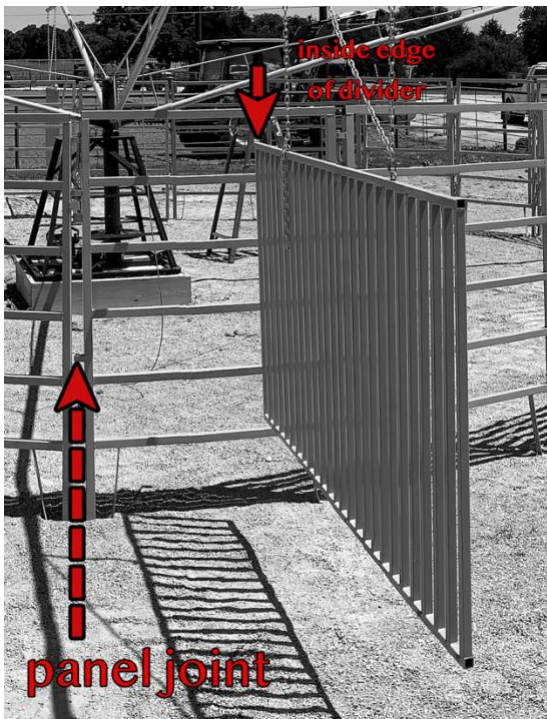


- After all dividers are installed and leveled. Release tension spring on the drive belts to allow the walker belt to be removed so the walker will “free spin” manually.

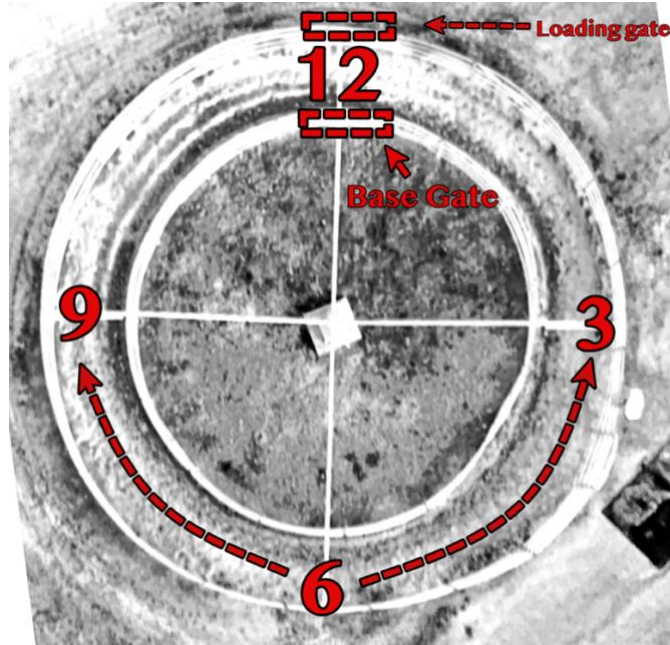


- The interior panels should be first. These are the shorter panels included. The first panel you should install would be the base maintenance gate (with gate opening towards walker base) with one panel on each side. Consider the base maintenance gate the 12:00 o'clock position. *Note: The maintenance gate lines up with the loading gate and should be faced the direction from which you will load your horses.*

All panels should be spaced approximately 4-8 inches (these dimensions vary depending on the levelness of the pad, walking surface level to within +/-1", 1' outside of walking surface) from the panel joints measured to the divider panel. This process will encompass you spinning your walker around manually while working from the 12:00 o'clock position to the 9:00 o'clock position and then from the 12:00 o'clock position to the three o'clock position.



- This process will be repeated on the opposite side from the 6 o'clock position to the 9 o'clock position and from the 6 o'clock position to the 3 o'clock position. Once this is completed, you should be able to manually spin your walker completely around while clearing all panels. Once they are properly clearing, which might take small adjustments, you will then secure the inner circle panels with stakes provided through the hole in the bottom of each panel.



- This exact process will be repeated for the exterior gate and fencing. Make sure you start with the loading gate (it should open outwards) and place it directly across from base maintenance gate. Once completed, you will need to spin your walker manually around to make sure that it is 100% clearing all inner and outer fencing. Once they are properly clearing, which might take small adjustments, you will then secure the outer circle panels with stakes provided through the hole in the bottom of each panel.
- You will need to put the belt back on the pulley drive system and the spring mechanism will need to be reengaged by tightening the spring down just enough to allow for a sheet of paper to fit between the 1st and 2nd ring of the spring.

