



FEATURES :

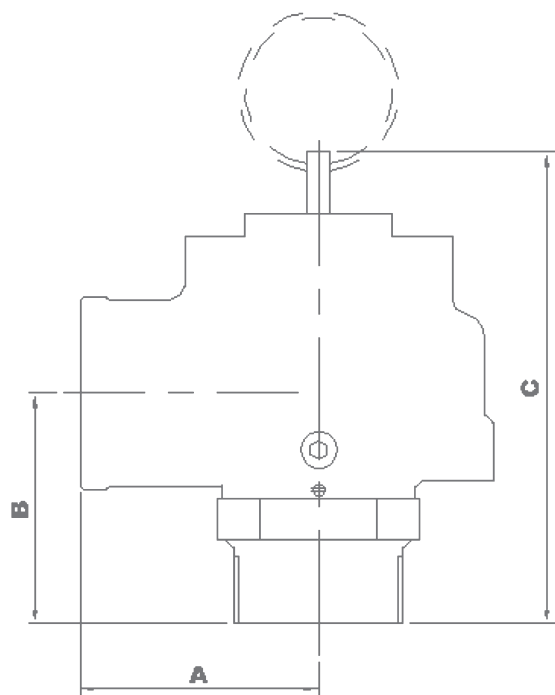
- Large nozzle design provides high capacity.
- Valve seats with Teflon backing for maximum performance.
- Pivot between disc and spring corrects misalignment and compensates for spring side thrust.

MODEL DESCRIPTIONS

- Model PRV-K has 'pull-ring' lift device for easy manual testing.
- Every valve is inspected and tested for pressure setting, blowdown and leakage.
- All adjustments are factory sealed to prevent tampering or disassembly.

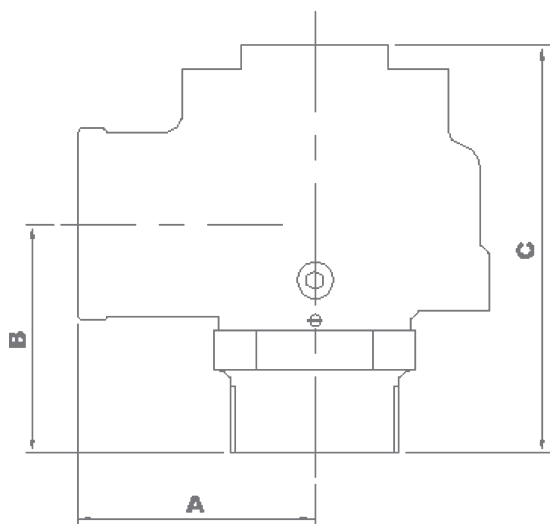
APPLICATIONS

- Protection of low to medium pressure high volume blowers, compressors and pneumatic conveying systems.
- Bulk hauling trailers / equipment.
- Light gauge tanks.
- Protection of high volume vacuum pumps and conveying systems.



PRESSURE RELIEF VALVE
(MODEL : PRV-K)

MODEL	INLET and OUTLET THS. SIZE IN BSP	Dimension in mm		
		A	B	C
PRV-K-2	2"	76	83	178
PRV-K-2.5	2 1/2"	90	95	203
PRV-K-3	3"	102	108	229



VACUUM RELIEF VALVE
(MODEL : VRV-K)

MODEL	INLET and OUTLET THS. SIZE IN BSP	Dimension in mm		
		A	B	C
PRV-K-2	2"	76	83	165
PRV-K-2.5	2 1/2"	90	95	195
PRV-K-3	3"	102	108	216

All dimensions are in mm.

Note: We reserve the right to modify the dimensions without prior notice.