

TABLE OF CONTENTS

ACKNOWLEDGEMENTS:.....	3
EMERGENCY CONTACT INFORMATION	4
1. INTRODUCTION.....	5
1.1 BACKGROUND.....	5
1.2 AIM	5
1.3 PURPOSE OF PLAN.....	6
1.4 ACCOUNTABILITY, BUDGET, AND RESPONSIBILITY OF ISLAND DISASTER COMMITTEE:	6
1.5 REVIEW OF THE PLAN.....	7
2. GUIDING POLICIES AND LEGISLATION	8
2.1 LEGISLATIONS AND PLANS	8
2.2 POLICIES	8
3. STRUCTURE.....	9
3.1 NORMAL ISLAND STRUCTURE.....	9
3.2 EMERGENCY STRUCTURE.....	9
FALEKAUPULE ACT (2008) SECTION 52: POWERS IN AN EMERGENCY	9
3.3 ISLAND DISASTER COMMITTEE COMPOSITION	10
3.4 REPORTING PATHWAY.....	11
4. TUVALU HAZARDS AND RISKS.....	12
4.1 DISASTER TIMELINE.....	12
4.2 HAZARD/ RISK MATRIX.....	14
5. WARNING ARRANGEMENTS/ STANDARD OPERATING PROCEDURES.....	18
5.1 WARNING SYSTEMS/ ARRANGEMENTS (METEOROLOGICAL)	18
5.2 WARNING SYSTEMS/ ARRANGEMENTS (HEALTH OUTBREAK).....	19
5.3 ISLAND DISASTER COMMITTEE STANDARD OPERATING PROCEDURES	21
6. CONTINGENCY PLANS.....	25
6.1 CYCLONE/ STRONG WINDS/ STORM SURGES CONTINGENCY PLAN	25
6.2 DROUGHT CONTINGENCY PLAN	25
6.3 FUNAFUTI DROUGHT MONITORING PLAN ACTIONS	26
6.4 COMMUNITY WATER DISTRIBUTION – DROUGHT WATCH	27
6.5 GOVERNMENT WATER DISTRIBUTION POINTS	27

6.6	TSUNAMI CONTINGENCY PLAN:.....	28
6.7	TSUNAMI EVACUATION CENTRES:.....	28
6.8	FIRE CONTINGENCY PLANNING	28
6.9	DISEASE OUTBREAK CONTINGENCY PLAN	29
7.	ISLAND PROFILE.....	30
7.1.	PHYSICAL DESCRIPTION	30
7.2.	DEMOGRAPHICS	31
7.3	EMERGENCY RESPONSE RESOURCES.....	33
7.4.	TUVALU RED CROSS RESOURCES	34
7.5.	FOOD SECURITY – AGRICULTURE & LIVESTOCK	35
	LIVESTOCK.....	36
7.6.	FOOD SECURITY – FISHERIES SECTOR	37
7.7.	HEALTH SERVICES.....	38
7.8	WATER & SANITATION	39
7.9.	ISLAND DISASTER COMMITTEE CAPACITY TRAINING	40
8.	ANNEXES:.....	41
8.1	LIST OF PUBLIC/ PRIVATE WATER CISTERNS.....	41
8.2	LIST OF DOUBLE STOREY HOUSES ON FUNAFUTI.	44

ACKNOWLEDGEMENTS:

The author wishes to thank all the persons that provided generously of their time and deep insights to the preparation of the Funafuti Disaster Preparedness, Response, and Recovery Plan. In particular, the author thanks the Department of Disaster Management, Kaupule of Funafuti, Tuvalu Meteorological Service, Department of Waste Management, Gender Affairs Department, Fusi Alofa Association, Tuvalu Red Cross and especially to the community members from Funafuti, Teone and Lofeagai for their valuable contributions during the 3-day training.

I would like to mention Department of Disaster Management staff: Luka Selu and Talafou Esekia, and Tuvalu Red Cross staff; Tusi Finikaso for all their work leading up to the completion of this first draft. Last but not the least is the acknowledgement of the Global Climate Change Alliance Plus: Scaling Up Pacific Adaptation (SUPA) project for funding this initiative.



Semi Vine
Pule Kaupule
Kaupule Funafuti



Luka Selu
Director
Department of Disaster Management

EMERGENCY CONTACT INFORMATION

	NAME	POSITION	ORGANISATION	PHONE CONTACT	EMAIL CONTACT
1	Semi Vine	Pule Kaupule	Kaupule Funafuti		
2	Taualo Penivao	Kaupule Secretary	Kaupule Funafuti		
3	Tutonu Bruce	Assistant Secretary	Kaupule Funafuti		
4	Amuia Aligi	Commissioner of Police	Tuvalu Police Services		
5	Luka Selu	Director	National Disaster Management Office		
6	Sumeo Silu	Deputy Secretary	Ministry of Public Works, Infrastructure, Environment, Labour, Meteorology & Disaster		
7	Tauala Katea	Director	Tuvalu Meteorological Service		
8	Tagifoe Tauetia Taomia	Secretary General	Tuvalu Red Cross Society		
9	Malofou Sopoaga	Director	Public Works Department		
10	Epu Falenga	Director	Department of Waste Management		
11	Lily Faavae	Permanent Secretary	Ministry of Health, Social Welfare, and Gender Affairs		
12	Teresa Lifuka Drecala	Executive Director	Tuvalu Family Health Association		
13	Melton Tauetia	Director	Fusi Alofa Association		
14	Pepetua Latasi	Director	Climate Change Department		
15	Fafetai Namoto	TSF Focal Point	Climate Change Department		
			Department		

1. INTRODUCTION

1.1 BACKGROUND

Tuvalu currently has four documents that are relevant for enhancing its disaster preparedness, recovery, and response namely the National Disaster Management Act (2007), the National Strategic Action Plan for Climate Change and Disaster Risk Management (2017-2021), (“the SNAP”), the National Disaster Risk Management Arrangement (2012), and the Tuvalu Recovery and Vulnerability Reduction Plan (2015). These documents set out institutional arrangements and responsibilities for disaster risk reduction in general and for disaster contingency. The SNAP provides an overarching strategy for the country with regards to Disaster Risk Management and Climate Change and has been developed in alignment with TKIII and the National Climate Change Policy. While these documents provide extensive background material, it lacks a simple and clear-cut path of who is responsible for rapid dissemination of warning and related information to and from the public or particularly each island community. (Tuvalu NAPA II Project Document, (2012)) It overly relies on committee meetings and a long chain of command which will be difficult to implement quickly in the event of a rapidly approaching potential disaster. Therefore, the basis for the development of the disaster plans at each island level was to provide a tool for Island Disaster Committee to prepare for, respond to and provide recovery measures for each of their respective island communities in times of a climate-induced disaster.

1.2 AIM

The overall aim of the plan is to provide a structure or framework for effective Disaster Preparedness, response and recovery planning and response mechanisms, so that the community in Funafuti can act in the event of a disaster, so that there is minimal loss of lives or injury and minimal damage to property.

1.3 PURPOSE OF PLAN

The plan outlines:

- The relevant policies that guide the work of the Kaupule of Funafuti and the Government of Tuvalu.
- The types of disasters which might affect Tuvalu, the associated hazards, and possible consequences on the population.
- The roles and responsibilities of the IDC which are in line with the Tuvalu NDRMA¹.
- Standard Operating Procedures for all IDC humanitarian activities, in all phases of a disaster.

In doing so it provides a framework to guide the work of the IDC in relation to Disaster Preparedness, Disaster Response and Disaster Recovery.

1.4 ACCOUNTABILITY, BUDGET, AND RESPONSIBILITY OF ISLAND DISASTER COMMITTEE:

The National Disaster Management Act 2008 establishes the Island Disaster Committee on each island. The Committee is responsible for:

1. Coordinating disaster mitigation, preparedness, response, and recovery measures at the island level. [SEP]
2. Identifying disaster risk reduction priorities for inclusion into the Island Strategic Plans.
3. Developing and reviewing the Island Disaster Management Plan in accordance with legislative requirements.
4. Allocating a budget line for operating expenses of the Island Disaster Committee from the Falekaupule's annual budget appropriation.
5. Maintaining access to and condition of assigned Evacuation Centres on the island and ensuring the safety of vulnerable groups.
6. Conducting initial assessment of the disaster on human life, health, property, and the environment on the island using procedures and templates set by the National Disaster Committee; and

¹ **Tuvalu National Disaster Risk Management Arrangements** (2012). The arrangements are being reviewed in 2017

7. Issuing to the community early warnings received from the Tuvalu Meteorological Service and acting as the main communication link between the National Disaster Committee and the local community in all disaster related matters.

The Island Disaster Committee is accountable to the National Disaster Committee and to the local community. The Island Disaster Committee must carry out its responsibilities in a fair, ethical and efficient manner and in compliance with the delegated provisions of the Disaster Management Act 2008 and the Falekaupule Act 2008 (CAP 4.08).

1.5 REVIEW OF THE PLAN

This plan will be reviewed by the Island Disaster Committee every 12 months during the Pre-Cyclone Season meeting prior to the start of the cyclone season in November every year.

Island Disaster Committee member(s) responsible for updating and maintaining the Plan:

- **Kaupule Assistant Secretary**

Review date: 24/02/2023

2. GUIDING POLICIES AND LEGISLATION

2.1 LEGISLATIONS AND PLANS

- Emergencies and Threatened emergencies (Special Powers) Act (1987)
- National Disaster Management Act (2007)
- Falekaupule Act (2008)
- National Disaster Risk Management Arrangements (2012)
- Tuvalu Recovery and Vulnerability Reduction Plan (2015)
- Tuvalu Meteorological Service National Strategic Plan 2020 – 2024
- Tuvalu Meteorological Service Act (2021)
- Funafuti Drought Monitoring Plan (2018)

2.2 POLICIES

- TE KETE National strategy for sustainable development (2021 – 2030)
- Te KANIVA Climate Change Policy (2012 – 2021)
- MOEAKIGA O MALEFATUGA - Funafuti Island Strategic Plan.

3. STRUCTURE

3.1 NORMAL ISLAND STRUCTURE²

The Falekaupule is the traditional assembly which is governed by custom and traditions and is the supreme decision-making body for the island. It is composed according to each island traditional set up. In Funafuti to be a Falekaupule member a person must be male and is at least 50 years of age. The Falekaupule members of the consecutive table constitutes of the Ulu Aliko, Tao Aliko (3 Assistant Chiefs), Failautusi (Secretary), Tukumuna (Speaker), who are selected from four “Matafale” (Vaisua, Lupe, Laka, Lagitupu)

The Kaupule is the Executive arm of the Falekaupule, and it consists of the Kaupule Elected officials who were only in office for a period of 4 years and the Kaupule Statutory Officials who were appointed employees that are there under the General Administrative Orders (GAO) terms of employment which are paid by government to administer the office of the Kaupule. There is also the Kaupule Committee which under the Falekaupule Act consists of 5 standing committees.

3.2 EMERGENCY STRUCTURE³

FALEKAUPULE ACT (2008) SECTION 52: POWERS IN AN EMERGENCY

(1) In the event of any disaster or emergency endangering the lives or properties of persons within a Falekaupule area, the **Pule o Kaupule** shall, in consultation with the **Pule Fenua**, make such decisions and take such steps as may be reasonably necessary to deal with the situation.

(2) In the event of a disaster or emergency endangering the lives or properties of persons within more than one Falekaupule area the **Pule o Kaupule** in consultation with the **Pule Fenua** shall liaise with the **National Disaster Committee** before making such decisions and taking such steps as may be reasonably necessary to deal with the situation.

² Funafuti Island Profile (2012)

³ Falekaupule Act (2008) Section 52: Powers in emergency.

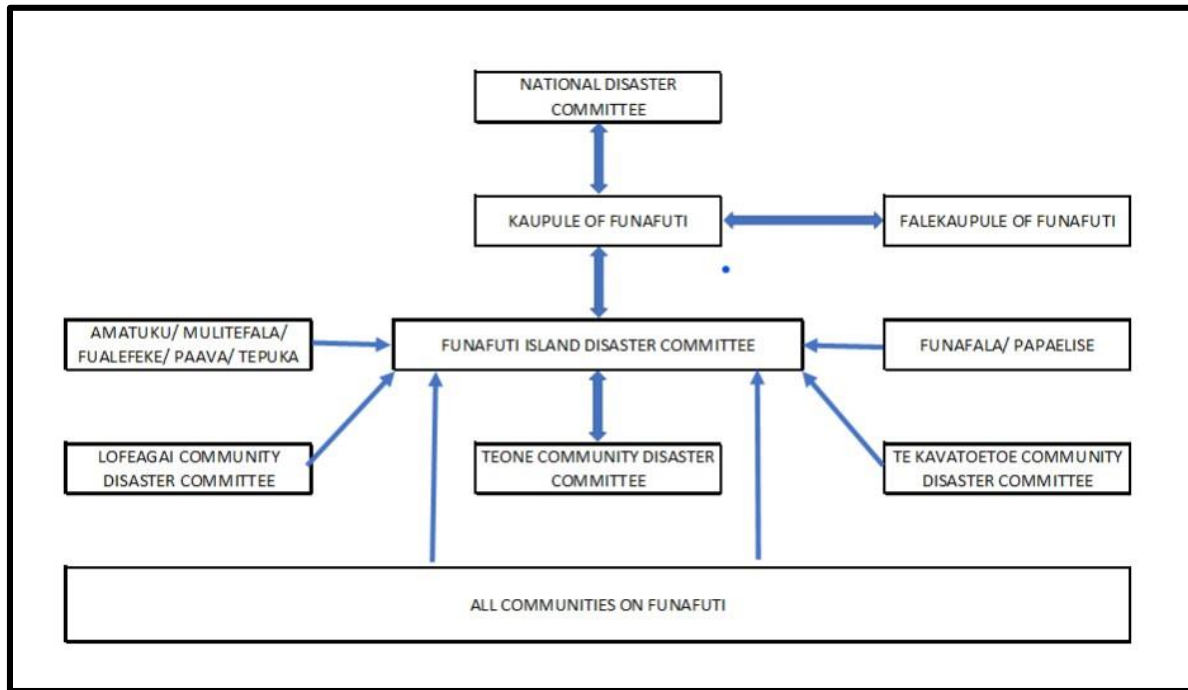
3.3 ISLAND DISASTER COMMITTEE COMPOSITION

Funafuti is unique in the sense that there is no provision under the National Disaster Management Act for the formation of an Island Disaster Committee.

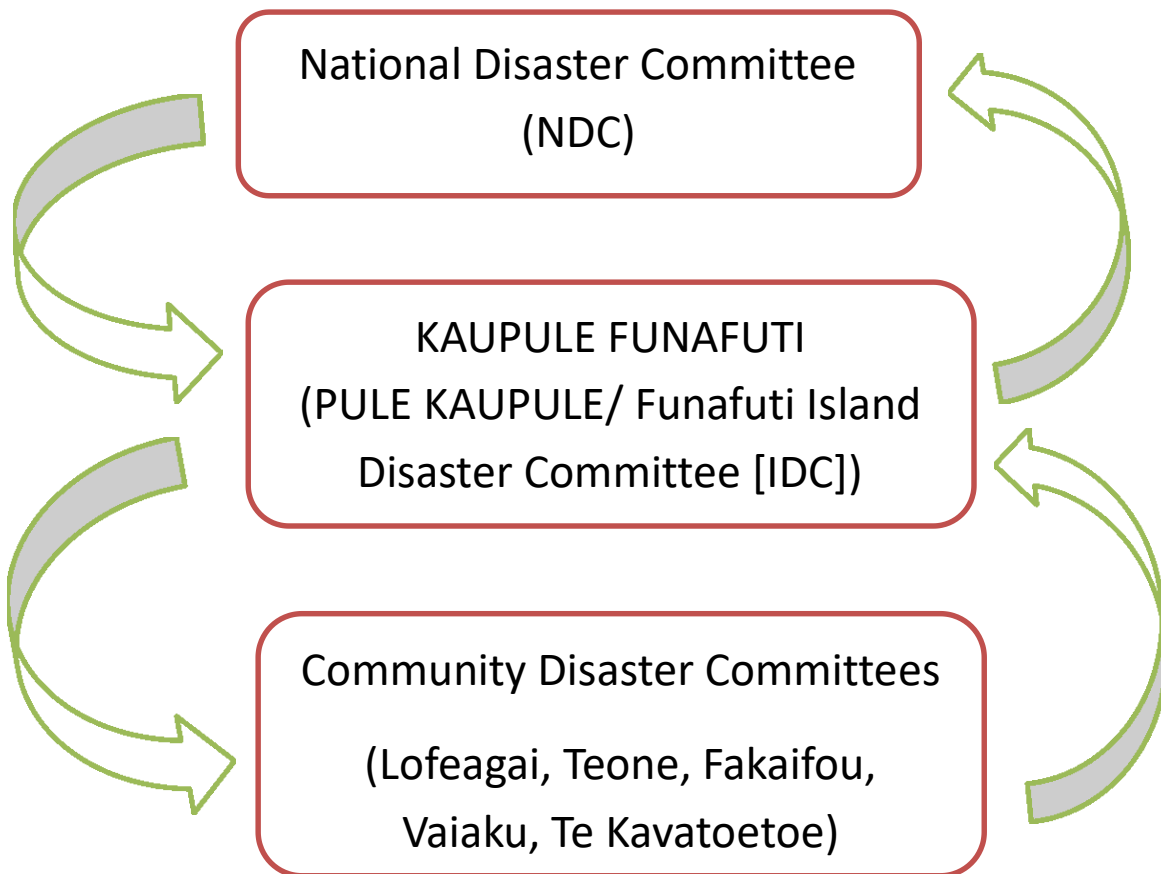
The Kaupule of Funafuti has designated ten members to start off the Island Disaster Committee and their names are listed below:

1. Pule Kaupule (Chairman of the Funafuti Island Disaster Committee)
2. Kaupule Secretary
3. Assistant Kaupule Secretary
4. Senala representative(s)
5. Alapi representative(s)
6. Lofeagai Community Disaster Committee representative
7. Teone Community Disaster Committee representative
8. Fakaifou Community Disaster Committee representative
9. Vaiaku Community Disaster Committee representative
10. Te Kavatoetoe Disaster Committee representative

3.4 REPORTING PATHWAY

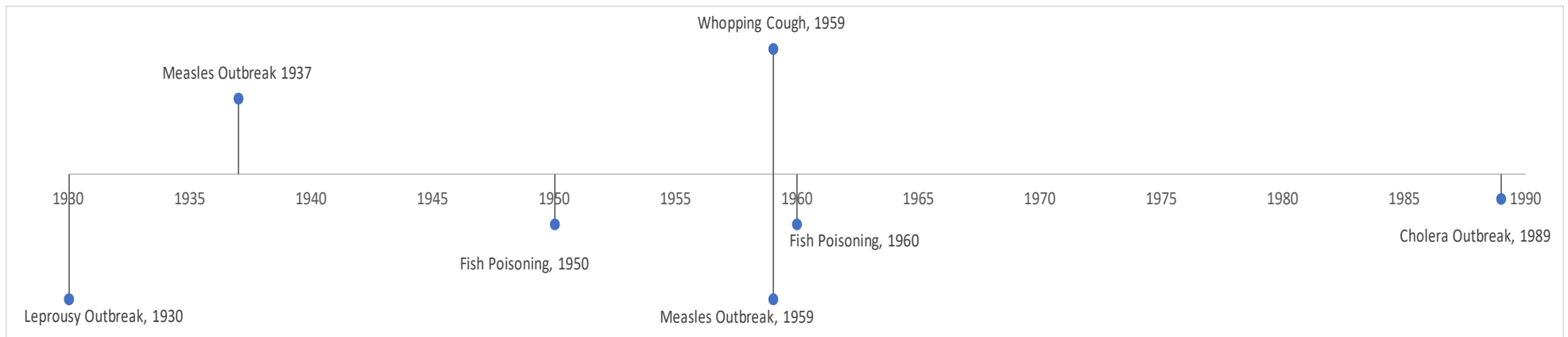
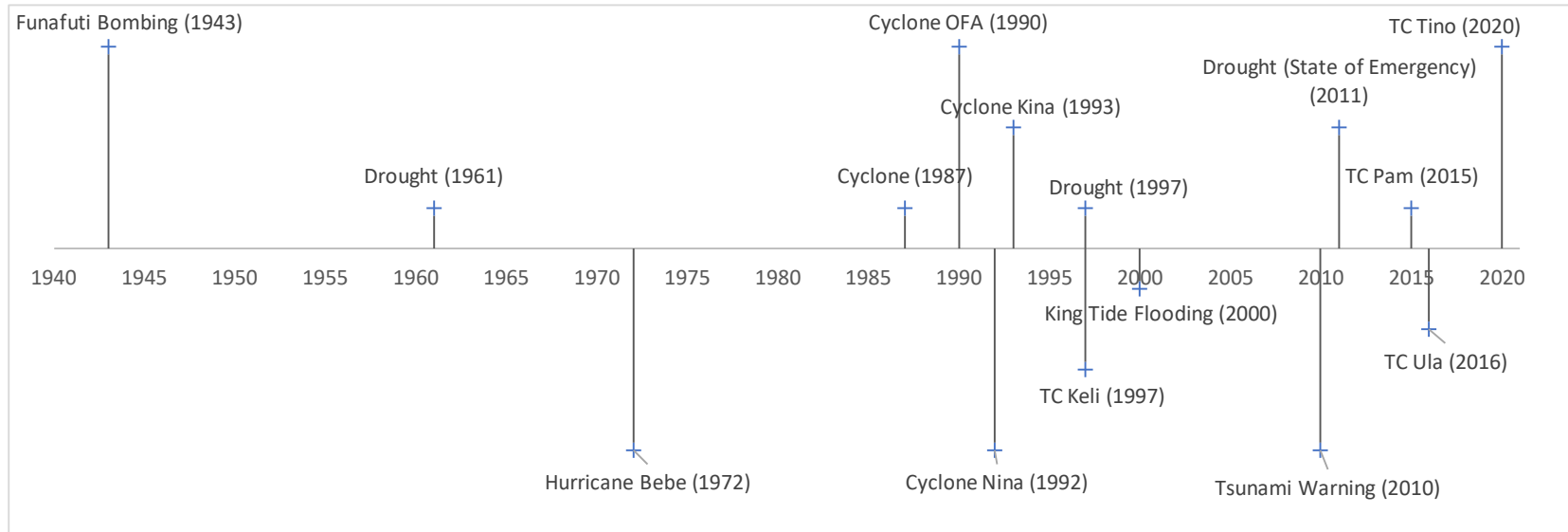


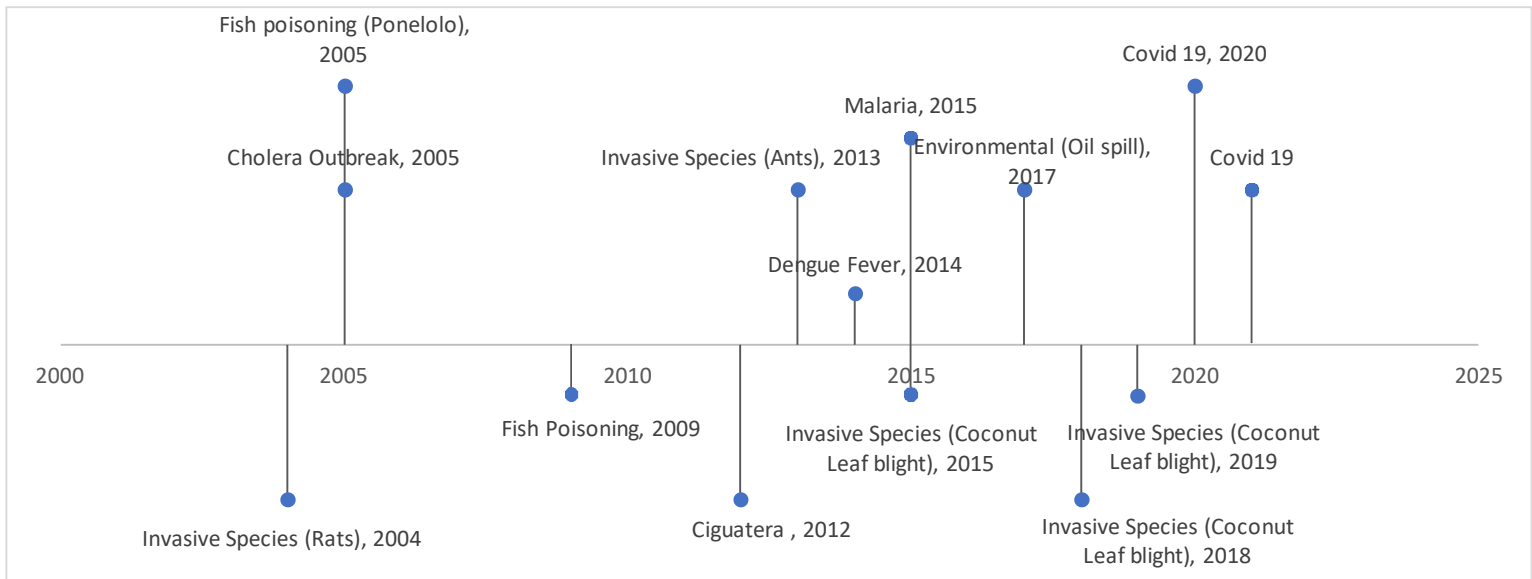
1.



4. TUVALU HAZARDS AND RISKS

4.1 DISASTER TIMELINE





4.2 HAZARD/ RISK MATRIX

NATURE OF RISK		MAGNITUDE OF RISK			RISK TREATMENT STRATEGY
HAZARD	HAZARD	LIKELIHOOD	CONSEQUENCE	RISK	
TROPICAL CYCLONE/ STORM SURGES	<ul style="list-style-type: none"> • Affects households (houses/ people/ belongings) • Affects food crops. • Affects livestock. • Affects fishing capacity. • Affects coastline. • Affects communication. • Gender impacts: damage to pulaka and fisheries stock may have negative effects on men's status and source of subsistence and women may experience increased workload with gathering food, cooking, and taking care of affected persons in a post-cyclone situation 	Possible	Critical	HIGH	<ul style="list-style-type: none"> • Preparedness actions to secure households before a tropical cyclone. • Cutting of trees close to houses. • Encourage households to prepare at household level during a strong wind warning (stock up on food, fix loose roofing, board up windows and doors. • Engage both men and women in developing a post-disaster recovery plan that contributes to gender equality

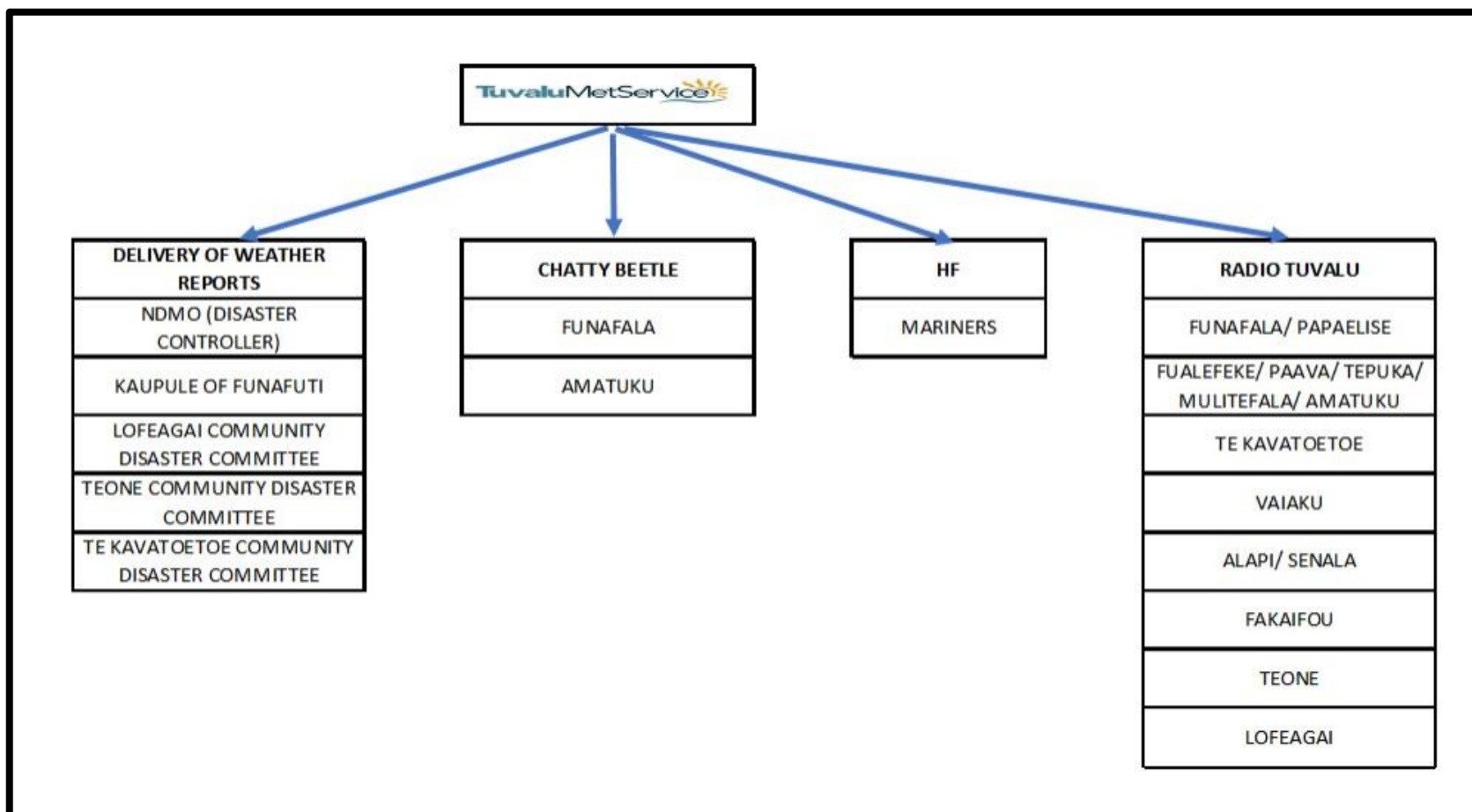
NATURE OF RISK		MAGNITUDE OF RISK			RISK TREATMENT STRATEGY
HAZARD	Impacts on Funafuti	LIKELIHOOD	CONSEQUENCE	RISK	
DROUGHT	<ul style="list-style-type: none"> • Affects Food crops (Coconuts, Breadfruit, Bananas) • Affects Livestock (Pigs, Chickens, Ducks) • Affects community members (no water for drinking, cooking, washing, and bathing) • Diseases • Creates a lot of dust and affects road. • Gender impact: men will spend longer hours collecting and distributing water and women, children and elderly will be particularly vulnerable to health risks. 	Possible	Critical	HIGH	<ul style="list-style-type: none"> • Maintenance of water harvesting systems on all buildings on the island (guttering systems, water storage units). • Proper and careful use of water. • Awareness programs on water-borne diseases.

NATURE OF RISK		MAGNITUDE OF RISK			RISK TREATMENT STRATEGY
HAZARD	Impacts on Funafuti	LIKELIHOOD	CONSEQUENCE	RISK	
TSUNAMI	<ul style="list-style-type: none"> Affects households (houses/ people/ belongings) Affects food crops. Affects livestock. Affects fishing capacity. Affects coastline. Communications 	Low	Catastrophe	HIGH	<ul style="list-style-type: none"> IDC to implement/ review evacuation drills conducted annually. IDC to identify possible evacuation centres for evacuation. IDC to ensure that all stakeholders carry out preparedness activities to ensure that all SOPs are carried out annually
FIRE	<ul style="list-style-type: none"> Affects lives, household property and household belongings. Psycho-social impact on the community <p>Gender impacts: women may be more at risk due to the time spent cooking and at home where fire is likely to originate</p>	Moderate	Catastrophic	HIGH	<ul style="list-style-type: none"> Island Disaster Committee to regularly remind households about fire safety around the home. Island Disaster Committee to conduct regular fire drills for Nauti Primary School, SDA Primary School, Fetuvalu Secondary School, USP (Tuvalu Campus) and Kaupule Office with the support from the Tuvalu Red Cross and National Disaster Management Office Island Disaster Committee to develop MOU with Tuvalu Police Services on usage of water cisterns on the island for fire extinguishing.

NATURE OF RISK		MAGNITUDE OF RISK			RISK TREATMENT STRATEGY
HAZARD	Impacts on Funafuti	LIKELIHOOD	CONSEQUENCE	RISK	
EROSION	<ul style="list-style-type: none"> Inundation of island Loss of land, property, livestock, and gravestones Displacement and relocation Gender impacts: men and women may spend more time re/building temporary protection barriers 	Likely	Major	HIGH	<ul style="list-style-type: none"> Planting of trees and reinforcing the foreshore with sandbags. Building/moving houses and buildings away from areas prone to erosion by consulting both men and women
EPIDEMIC	<ul style="list-style-type: none"> Small island population means that contagious diseases spread very quickly amongst the whole community. Gender impacts: pregnant women, children and the elderly will be highly vulnerable to diseases 	Likely	Catastrophic	HIGH	<ul style="list-style-type: none"> Island Disaster Committee together with the Ministry of Health to develop a detailed in the Health Outbreak Contingency Plan that incorporates gender-related risk sand needs. Screen all incoming persons to the island. Stock sufficient medication at the island clinic Relocation of residents to Funafala, Papealise and other islets

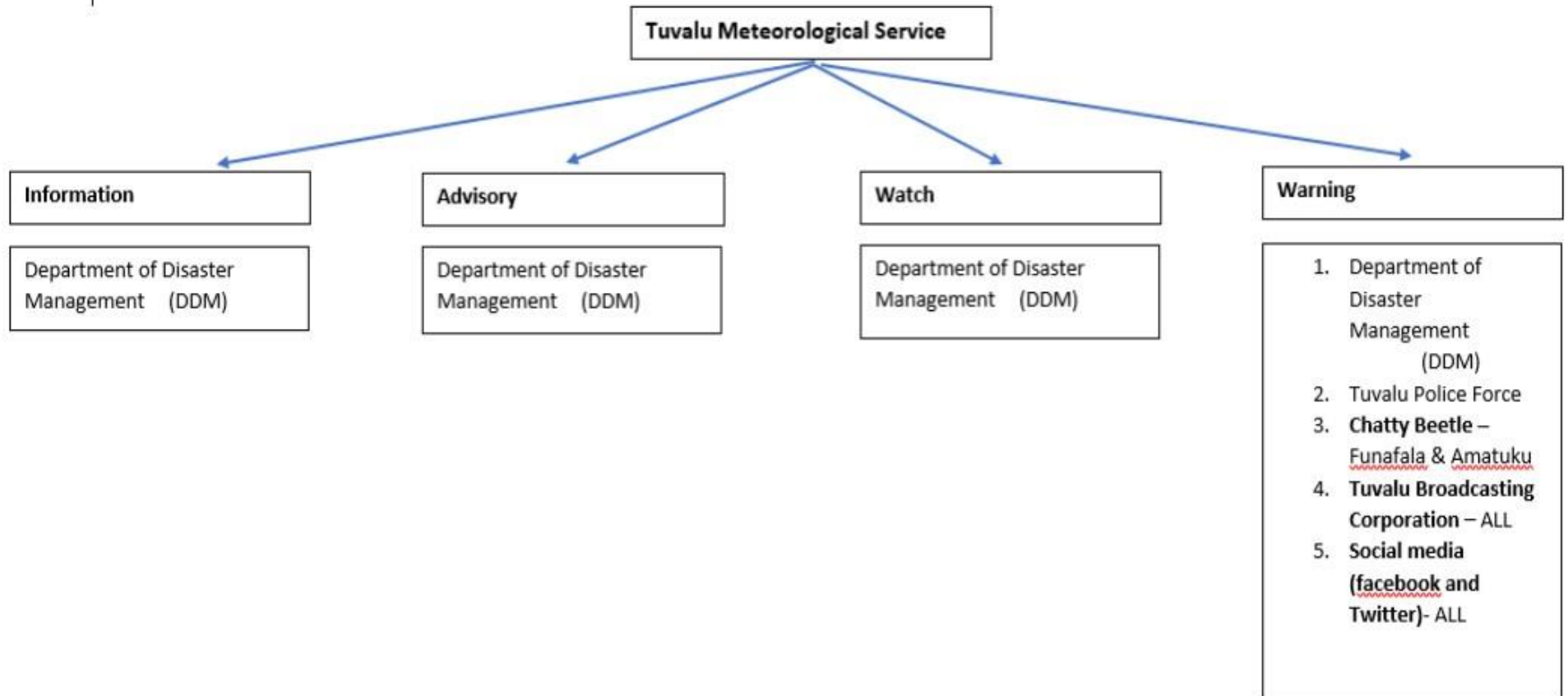
5. WARNING ARRANGEMENTS/ STANDARD OPERATING PROCEDURES

5.1 WARNING SYSTEMS/ ARRANGEMENTS – SLOW ONSET DISASTERS.

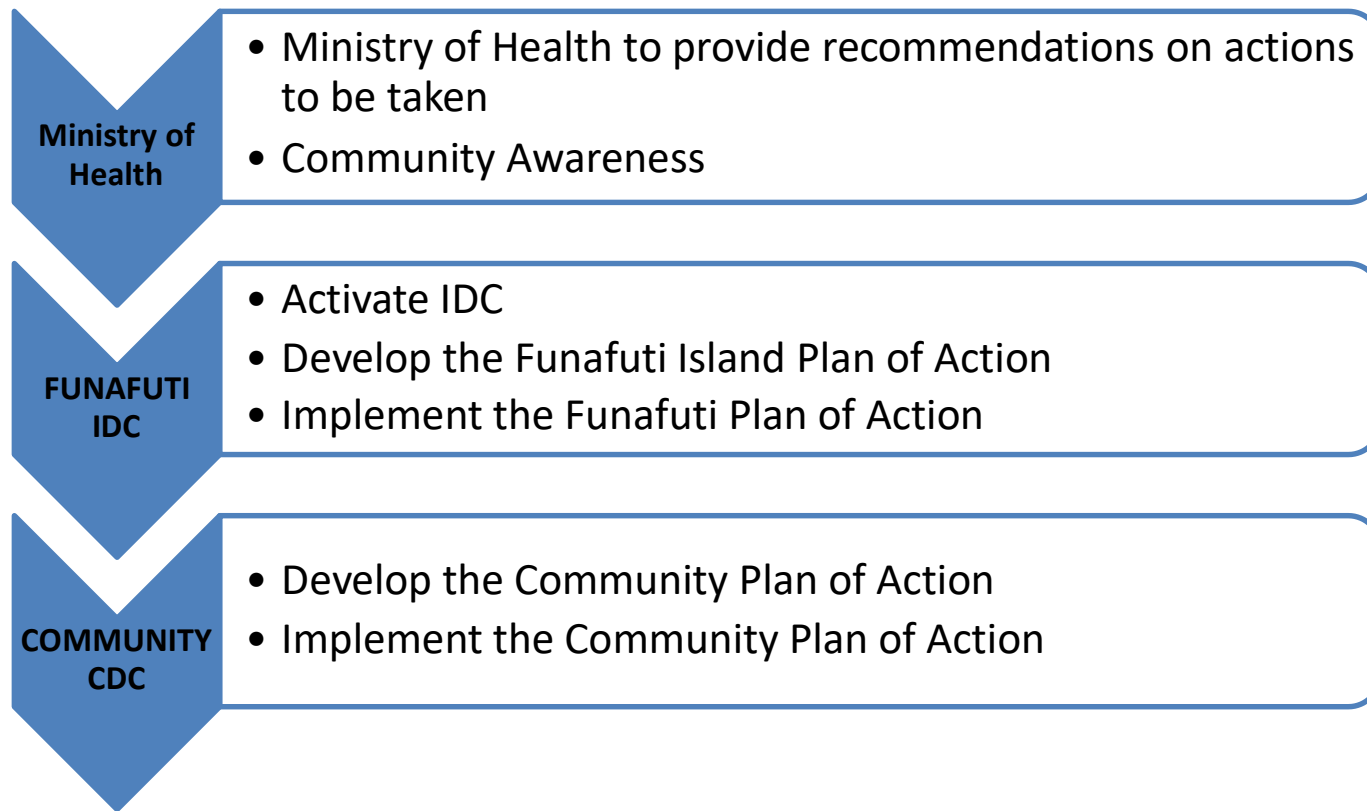


IMPORTANT: Do not trust information from FACEBOOK or WORD OF MOUTH. If information is not from NDMO, TMS, NDC or Radio Tuvalu, contact 20736 (TMS office) or 20726 (Police) to confirm details. These numbers are available 24hours, 7 days a week.

5.2 WARNING SYSTEMS/ ARRANGEMENTS – SLOW ONSET DISASTERS.



5.3 WARNING SYSTEMS/ ARRANGEMENTS (HEALTH OUTBREAK)



5.3 ISLAND DISASTER COMMITTEE STANDARD OPERATING PROCEDURES

(National Disaster Risk Management Arrangements (2012))

1. PREPAREDNESS/ MITIGATION STAGE		
ACTIVITY	PRIMARY ROLE	SUPPORT ROLE
a. Contribute towards the annual Island Disaster Plan Review	Kaupule Staff	All Funafuti IDC and Community CDC members
b. Review and maintain other associated disaster plans which are the responsibility of the Island Disaster Committee	Kaupule Staff	All Funafuti IDC and Community CDC members
c. Maintain skills and competencies of the Island Disaster Committee members in their respective DRM roles	Kaupule Staff	All Funafuti IDC and Community CDC members
d. In partnership with the NDMO ensure educational awareness programs regarding crop and livestock protection to disaster events are made available to islanders.	Kaupule Staff	All Funafuti IDC and Community CDC members
e. Acquire and maintain the equipment needed to affect the repair of disaster caused damage in key areas.	Kaupule Staff	All Funafuti IDC and Community CDC members
f. Maintain stocks of food for disaster related events.	Kaupule Staff	All Funafuti IDC and Community CDC members
g. Review all proposed development or resources for use in projects for impact on disaster vulnerabilities of food crops, windbreaks, and erosion cover.	Kaupule Staff	All Funafuti IDC and Community CDC members
h. Ensure all buildings that are used as shelters are inspected annually for structural integrity to reduce risk to storm damage.	Kaupule Staff	All Funafuti IDC and Community CDC members
i. Review annually, disaster response resources and forward to NDMO to maintain resource register.	Kaupule Staff	All Funafuti IDC and Community CDC members

2. READINESS STAGE (48hrs – 24hrs)

ACTIVITY	PRIMARY ROLE	SUPPORT ROLE
a. Convene Island Disaster Committee meeting to assess alert	Kaupule Staff	All Funafuti IDC and Community CDC members
b. Provide advice to islanders on status of alert.	Kaupule Staff	All Funafuti IDC and Community CDC members
c. Assess where normal activities can be restricted to allow personnel, equipment, supplies, and funds be released for disaster response.	Kaupule Staff	All Funafuti IDC and Community CDC members
d. Implement disaster logs for disaster expense.	Kaupule Staff	All Funafuti IDC and Community CDC members
e. Check communications for operational readiness.	Kaupule Staff	All Funafuti IDC and Community CDC members
f. Inspect resources and equipment for operational readiness.	Kaupule Staff	All Funafuti IDC and Community CDC members
g. Ensure emergency generators are checked and tested for operational readiness.	Kaupule Staff	All Funafuti IDC and Community CDC members
h. Secure buildings which are often used as shelters.	Kaupule Staff	All Funafuti IDC and Community CDC members
i. Protect computers, record cabinets and other assets and equipment against possible damage	Kaupule Staff	All Funafuti IDC and Community CDC members
j. Ensure general readiness of island to respond to disaster.	Kaupule Staff	All Funafuti IDC and Community CDC members

3. STAND-BY (24hrs – 12hrs)

ACTIVITY	PRIMARY ROLE	SUPPORT ROLE
a. Implement alerting procedures for islanders on receipt from NDC of imminent impact.	Kaupule Funafuti	All Funafuti IDC and Community CDC members
b. Provide status report on readiness to NDC on Funafuti.	Kaupule Funafuti	All Funafuti IDC and Community CDC members

4. ACTIVATION (12hrs – 0hrs)

ACTIVITY	PRIMARY ROLE	SUPPORT ROLE
a. Suspend regular business and place staff on alert.	Kaupule Funafuti	All Funafuti IDC and Community CDC members

5. RESPONSE/ RELIEF AND EARLY RECOVERY

ACTIVITY	PRIMARY ROLE	SUPPORT ROLE
a. Check status of communications with Funafuti.	Kaupule Funafuti	All Funafuti IDC and Community CDC members
b. Prepare damage assessment	Kaupule Funafuti	All Funafuti IDC and Community CDC members
c. Provide advice to islanders on status of alert.	Kaupule Funafuti	All Funafuti IDC and Community CDC members
d. Determine status of island water and food supplies.	Kaupule Funafuti	All Funafuti IDC and Community CDC members
e. Determine number of casualties and adequacy of medical supplies.	Kaupule Funafuti	All Funafuti IDC and Community CDC members

5. RESPONSE/ RELIEF AND EARLY RECOVERY

ACTIVITY	PRIMARY ROLE	SUPPORT ROLE
f. Provide coordination for the evacuation of patients whose medical conditions are beyond.	Kaupule Funafuti	All Funafuti IDC and Community CDC members
g. Provide all necessary damage control to buildings to ensure loose material does not create an additional hazard	Kaupule Funafuti	All Funafuti IDC and Community CDC members
h. Undertake measures to maintain community health and prevent disease	Kaupule Funafuti	All Funafuti IDC and Community CDC members
i. At the earliest opportunity, review and analyse with key staff each response plan to determine the effectiveness and identify improvements. Recommend amendments to NDMO.	Kaupule Funafuti	All Funafuti IDC and Community CDC members
j. Prepare file for the Minister of Finance and Economic Development with detailed expense records for all disaster related activities.	Kaupule Funafuti	All Funafuti IDC and Community CDC members
k. Partake in NDC assessment of overall disaster risk management governance arrangements.	Kaupule Funafuti	All Funafuti IDC and Community CDC members
l. Identify and report to the NDC and Ministry responsible for respective Island Disaster Committees any significant vulnerability reduction initiatives for inclusion in the national strategy plan and annual budget submissions.	Kaupule Funafuti	All Funafuti IDC and Community CDC members
m. Develop project plans for crop and windbreak repair projects with costs and resources required to ensure disaster recovery projects are completed in a timely manner.	Kaupule Funafuti	All Funafuti IDC and Community CDC members

6. CONTINGENCY PLANS

6.1 CYCLONE/ STRONG WINDS/ STORM SURGES CONTINGENCY PLAN

	BEFORE	DURING	AFTER
1	Conduct awareness at community levels	Advise all families to stay indoors	IDC to conduct post disaster assessment on all households on the mainland and outlying inhabited islets
2	Conduct drills at community level	IDC members to monitor most affected areas and evacuate households if needed	IDC members to coordinate return of evacuated people to their houses
3	Trim trees that may pose hazards to houses in strong winds	IDC members to monitor number of people in evacuation centres	IDC members to coordinate with different island communities on clean up
4	Identify evacuation centres that people can evacuate to		IDC to submit situation report to NDC
5	Advocate on Family Evacuation Kits so families can prepare their kits at home before evacuating		IDC to submit household report to the Disaster Assessment Team (PWD)

6.2 DROUGHT CONTINGENCY PLAN

	BEFORE	DURING	AFTER
1	Conduct Baseline Survey on Household Water Storage Capacity	Deliver water trucks to be available for water distribution	Conduct report on Drought analysis to determine lessons learnt from Drought Response
2	Conduct Needs assessment on all gaps identified during Household Water Storage Capacity	Establish water tanks to be used as water distribution points for all households when needed	Continue Community awareness on Early Warnings to ensure that everyone is prepared
3	Identify areas that can be used for access freshwater lens on Funafuti (well sites)	Conduct community awareness programs on drought key messaging	Ensure there is sufficient medicine
4	Procure portable desalination unit that can be used at all Funafuti settlement areas	Conduct needs assessment on all household	

6.3 FUNAFUTI DROUGHT MONITORING PLAN ACTIONS

STAGE	IDC ACTIONS	HOUSEHOLD ACTIONS
Normal	Community Water Harvesting System maintenance	Household Water Harvesting Systems maintenance
	Conduct Baseline Survey on Water Storage Capacity at both Community and Household level	
Drought Advisory	Media campaign on Social Media, Radio Tuvalu for households to start water management initiatives	
Drought Watch	National Drought Committee is activated. Send a Funafuti IDC rep to attend Drought Watch meetings with the Kaupule of Funafuti representative	
	Weekly water soundings of Community Water Cisterns	
	Open Community Water Cisterns and start rationing 6 buckets of water per family	
Drought Warning	Conduct daily report on water surveillance (number of families rationing water, water sounding)	
	Weekly Household Water Soundings	Weekly Household Water Soundings
Drought	Relocation of non-essentials to the islets (Funafala, Papanise, Fualefeke, Paava) for families to use water there	
	Government of Tuvalu water rationing to start	
	Continue daily report on surveillance (number of families rationing water, water sounding)	
	Continue Household Water Soundings	
SOE	Continue weekly water surveillance on Community and Household Water Storage Capacity	

6.4 COMMUNITY WATER DISTRIBUTION – DROUGHT WATCH

	COMMUNITY CISTERN	LOCATION
1	Lofeagai EKT Church	Lofeagai
2	Kainaki Falekaupul	Teone
3	Seimeana Falekaupule	Fakaifou
4	Faihouloto Falekaupule	Fakaifou
5	Fakaiaiamanu Falekaupule	Fakaifou
6	Talimalie Falekaupule	Fakaifou
7	Lotonui Falekaupule	Fakaifou
8	Tausoa Lima Falekaupule	Senala
9	Lotokava Falekaupule	Alapi
10	Vaiaku EKT Church	Vaiaku
11	Te Kavatoetoe EKT Church	Te Kavatoetoe

6.5 GOVERNMENT WATER DISTRIBUTION POINTS

Government water distribution points are water tanks which are filled daily by the Public Works Department – Water Division unit. Families can access these water tanks for their daily ration of water.

	GOVERNMENT DISTRIBUTION POINT	LOCATION
1	Lofeagai EKT Church	Lofeagai
2	Palagi Road	Fakaifou
3	Faihouloto Falekaupule	Fakaifou
4	Tausoa Lima Falekaupule	Senala
5	Lotokava Falekaupule	Alapi
6	Opposite Kakee's residence	Alapi
7	Te Kavatoetoe EKT Church	Te Kavatoetoe

6.6 TSUNAMI CONTINGENCY PLAN:

	BEFORE	DURING	AFTER
1	Designate evacuation centres for evacuation of everyone on Funafuti	Ensure that there is someone from the IDC and Tuvalu Police Services to coordinate movement of people in designated evacuation centres	Clean up of all affected areas
2	Determine Household Evacuation Kits so families know what to put in their Household evacuation kits	Ensure that updates from Tuvalu Met Services are available to everyone in the designated evacuation centre	Return all displaced people back to their homes
3	Determine logistics of how to evacuate people to designated evacuation centres	Ensure that someone is registering everyone in the designated evacuation centre	Carry out damage assessments on mainland and islets
4	Establish signposts and awareness so people know which places they can evacuate to		Carry out assessments on people's wellbeing and mental health
5			Build back better by climate proofing houses

6.7 TSUNAMI EVACUATION CENTRES:

	EVACUATION CENTRE	TYPE	LOCATION
1	TMTI Classroom	Government	Amatuku
2	Lofeagai Hall	Community	Lofeagai
3	Fetuvalu Secondary School	Community	Lofeagai
4	Princess Margaret Hospital	Government	Senala
5	Nauti Primary School	Government	Senala
6	L's Lodge	Private	Fakaifou
7	Tonise Suega	Private	Fakaifou
8	Government Building	Government	Vaiaku
9	SDA Primary School	Community	Alapi

6.8 FIRE CONTINGENCY PLANNING

There is no plan for Fire on Funafuti. However, recommendations for the Island Disaster Committee are:

1. Develop MOU with Tuvalu Police Services on the Fire division to be able to replenish water tanks on fire trucks from neighboring houses or water tanks.
2. Funafuti Island Disaster Committee to coordinate with Tuvalu Police Services on crowd control and ensure public safety.

6.9 DISEASE OUTBREAK CONTINGENCY PLAN

	BEFORE
1	Community awareness on TV, Radio,
2	Promote hygiene at household level and ensure that Hygiene Committee conducts checks on a regular basis
3	Conduct water quality tests on all water tanks (by request)
4	Promote hygiene when preparing food and food storage
5	Limit public gatherings
6	Develop minimum standards all households have to meet concerning their toilets, septic tanks, rubbish disposal
7	Check whether sewage system is safe
8	Health team to check all food products in shops to ensure that they are of good quality and not past expiry date
9	To ensure that Health Clinics have handwashing stations

It is important to note that different disease outbreaks have different thresholds. The Island Disaster Committee must always work in partnership with the Public Health Division on coordination on Funafuti.

7. ISLAND PROFILE

7.1. PHYSICAL DESCRIPTION⁴

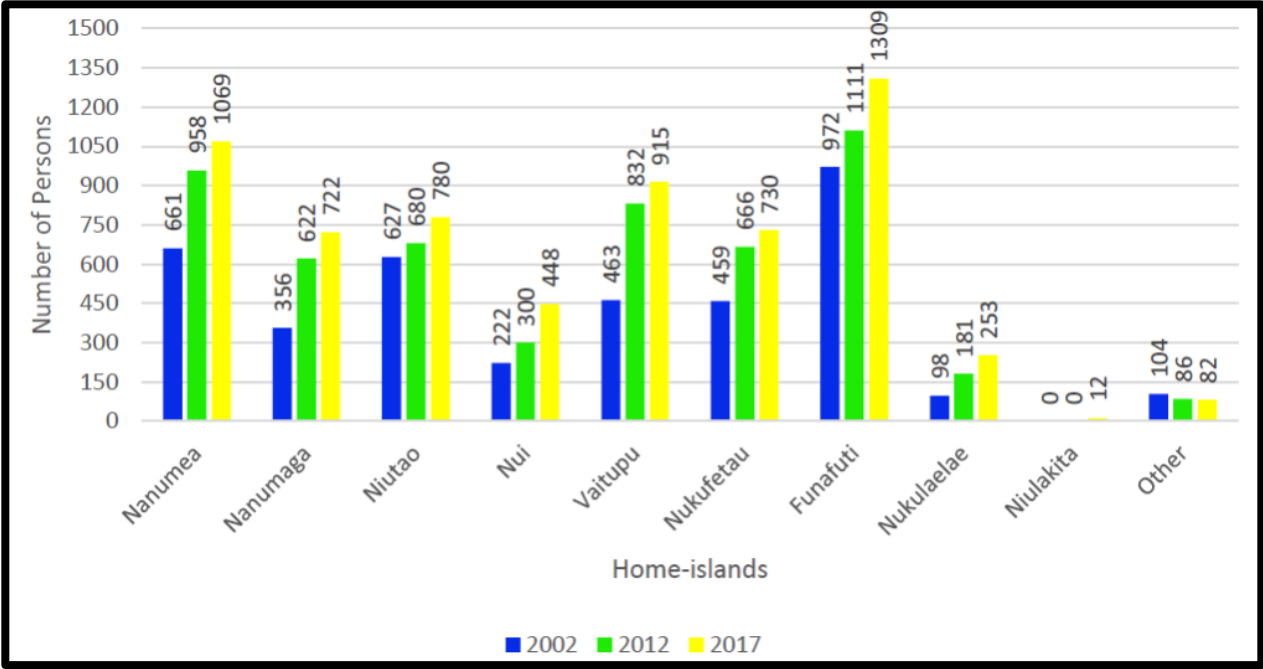
Legend	
Public Works Department	Guesthouse
National Stadium	TEC
Desalination Plant	PreSchool
Wharf	TCS
MarketPlace	Jetty
Agriculture	Kaupule
NGO	Banks
Media	School
Hotel	Womens Handicraft
Government Buidling	Hospital
Cemetary	CFC
Police	Telecom
Tertiary School	
Airport	
Weather Station	



⁴ Funafuti Island Profile (2012)

7.2. DEMOGRAPHICS

Age	Male	Female	TOTAL
0-4	400	335	735
5-9	382	343	725
10-14	290	260	550
15-19	314	277	591
20-24	324	304	628
25-29	352	286	638
30-34	259	225	484
35-39	196	169	365
40-44	156	112	268
45-49	134	133	267
50-54	169	140	309
55-59	125	152	277
60-64	96	113	209
65-69	55	82	137
70-74	23	31	54
75-79	17	29	46
80-84	11	18	29
80+	15	22	37
TOTALS	3318	3031	6349



7.3 EMERGENCY RESPONSE RESOURCES

DRR ASSET	ORGANISATION
CHAINSAWS	Public Works Department
	Kaupule of Funafuti
	Department of Disaster Management
LOADERS/ EXCAVATORS	Public Works Department
	Department of Waste Management
DUMP TRUCKS	Kaupule of Funafuti
	Public Works Department
	Department of Waste Management
SHREDDERS	Department of Waste Management
BUSES/ TRUCKS for EVACUATION	Kaupule of Funafuti
	Public Works Department
	Government of Tuvalu
SPEED BOATS	Kaupule of Funafuti
	Tuvalu Fisheries Department
	Tuvalu Maritime Training Institute
	MATAILI 2
COMMUNICATIONS	Chatty Beetle - TMS
	HF Radio - TMS
	HF Radio - MATAILI
	Internet - TTC
	Mobile Phones - TTC
DESALINATION UNITS	Public Works Department

7.4. TUVALU RED CROSS RESOURCES⁵

ITEM DESCRIPTION	ITEM CODE	IQ
Total Population (2017 Census)		6716
Total Households (2017 Census)		849
Household Average (2017 Census)		8
TUVALU RED CROSS HH REPOSE (15%)		130
COLLAPSIBLE JERRICAN. 20L capacity with outlet	HCONJCANC20	800
BLANKET. Synthetic, 1.5m x 2m, Medium Thermal	HSHEBLANPMT1	1
TARPAULIN. Woven plastic, 4m x 6m, white/white piece	HSHETARP406	0
BUCKET. Plastic, 14L with clip cover and 55mm outlet	HCONBUCKP14	24
MOSQUITO NET. LLIN - rectangular large 160 x 180 x 150cm	HSHEMNETRL	107
KITCHEN SET. Family of 5 persons, type "A"	KRELCOOSETA	159
HYGIENE KIT for 5 persons/ 1 month	KRELHYPA05P	192
LUCI SOLAR LIGHT		0
SHELTER TOOL KIT, tools and fixings	KRELSHEK01	120

⁵ Once construction of the Funafuti Disaster Preparedness (DP) depot is complete this year, the items will be re-positioned inside the DP depot.

7.5. FOOD SECURITY – AGRICULTURE & LIVESTOCK⁶

Agriculture is limited on Funafuti Island because of the lack of land available for agriculture activities. The main island of Funafuti is highly populated with people and houses with only a small portion of the land used by local farmers to cultivate their pulaka. The only common agriculture activity that is being carried out in Funafuti is the home gardening. The home gardening is provided by the Department of Agriculture who is assisted by the Taiwan agriculturalists and one of their projects was the Fatoaga Fiafia Garden. They also provide the public with vegetables by selling them at a very reasonable price.

HOME GARDENING IS VERY POPULAR TABLE 1: EMERGENCY CONTACTS **AMONGST HOUSEHOLDS IN FUNAFUTI. THE PUBLIC ARE PROVIDED WITH SEEDS, FERTILIZER, AND TECHNICAL ASSISTANCE AS WELL AS OTHER FACILITIES TO SET UP THEIR HOME GARDENS. THIS HAS HELPED MANY FAMILIES IN ENSURING THAT THEY ARE ABLE TO HAVE GREENS IN THEIR DAILY DIET AND SAVE COSTS IN BUYING VEGETABLES FROM THE LOCAL SUPERMARKET AND STORES WHICH TEND TO BE EXPENSIVE AS THEY ARE IMPORTED.**

MOST COMMON TYPES OF VEGETATION

FRUITS AND VEGETABLES				ROOT CROPS
Cucumber	Spring Onion	Tomato	Wax gourd	Pulaka
Watermelon	Cabbages/Lettuce	Laulu (edible fern)	Chili	Dalo
Bele	Beans	Bananas	Breadfruits	Sweet Potato
Bottle gourd	Pumpkin	Pandanus	Capsicum	Germinating Nuts

⁶ Information sourced from Funafuti Island Profile

LIVESTOCK

Livestock is one of the major subsistence activities for Tuvalu people. It is also one of the main sources of meat on the island especially with pigs and poultry. The main types of livestock are pigs, chicken, ducks, and domesticated animals such as dogs and cats. Table 23 indicates the number of households and types of livestock in Funafuti from 2002 and 2011. The number of households that have pigs had increased by 122 (27.6%) from 441 in 2002 to 563 in 2011 while households that have chicken and ducks increased by 104 which is more than triple the number of households in 2002. Domesticated animals show that there has been a decrease by 76 households that raise dogs while an increase of 61 households that raise cats.

Years	Total Number of Household				
	Pigs	Chicken	Ducks	Dogs	Cats
2002	441	65	13	301	211
2011	563	144	38	224	272

Source: Compiled from Population and Housing Census 2002 and Island Profile Survey 2011

Village	f, Floor, Fence, Sewer	Roof, Floor, Fencé	Concrete Floor/ Fence			Others			None		
			Pigs	Chicken	Ducks	Pigs	Chicken	Ducks	Pigs	Chicken	Ducks
Lofeagai	21	38	8	6	3	12	9	1	1	34	14
Teone	20	6	4	1	1	32	3	1	0	18	1
Fakaifou	80	20	1	0	0	9	2	0	0	8	2
Senala	55	23	14	1	0	1	3	0	0	8	1
Alapi	51	18	5	0	0	7	2	0	5	5	3
Vaiaku	34	12	4	0	0	3	2	0	0	3	1
Tekavatoetoe	37	7	10	12	3	10	3	1	1	20	2
Amatuku	5	5	0	0	0	0	0	0	0	0	0
Funafala	0	0	3	1	3	1	1	0	0	2	1
Total	303	129	49	21	10	75	25	3	7	98	25

7.6. FOOD SECURITY – FISHERIES SECTOR



PERCENTAGE OF SEA TRANSPORTATIONS THAT IS USED ON THE ISLAND BY VILLAGE AND TYPE.

Table 1: Total number of sea transportation by type and by village

Village	Boat & motor	Boat	Motor	Canoes
Lofeagai	18	2	7	30
Teone	17	1	0	22
Fakaifou	18	3	7	20
Senala	33	15	14	16
Alapi	22	8	7	23
Vaiaku	17	1	5	27
Tekavatoetoe	17	5	3	25
Amatuku	6	1	0	3
Funafala	2	1	0	0
Total Number	150	37	43	166

Table 2: Total number of sea transportation by type and by village

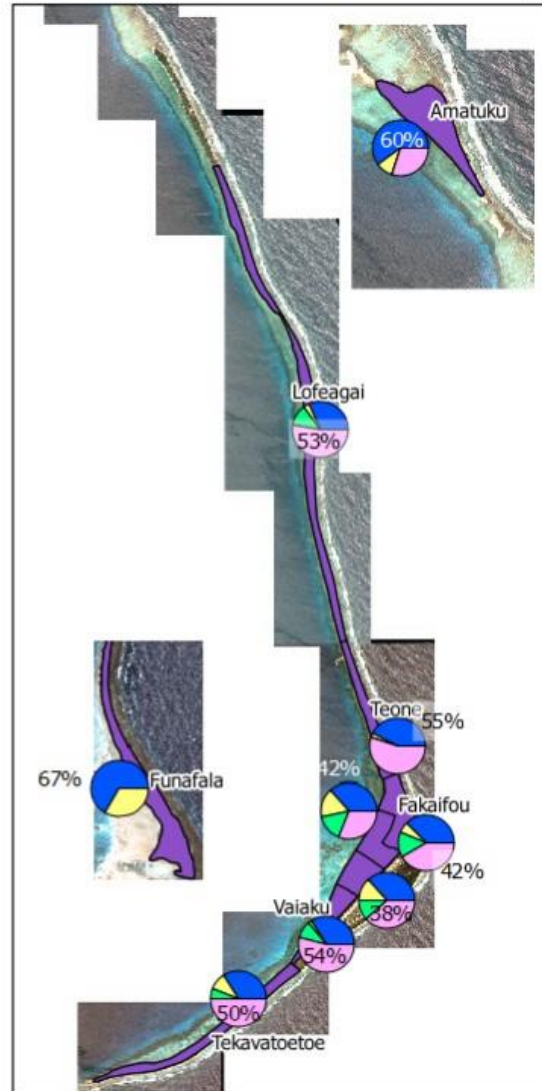
Village	Boat & motor	Boat	Motor	Canoes
Lofeagai	17	2	6	26
Teone	17	1	0	20
Fakaifou	16	2	4	19
Senala	29	11	10	13
Alapi	20	8	7	21
Vaiaku	16	1	3	23
Tekavatoetoe	15	5	3	23
Amatuku	6	1	0	2
Funafala	2	1	0	0
Total Number	138	32	33	147

Table 2: Number of households with transportation by year and by type

Year	Boat & Motor	Boat	Motor	Canoe
2002		106	104	89
2012	138	32	33	147

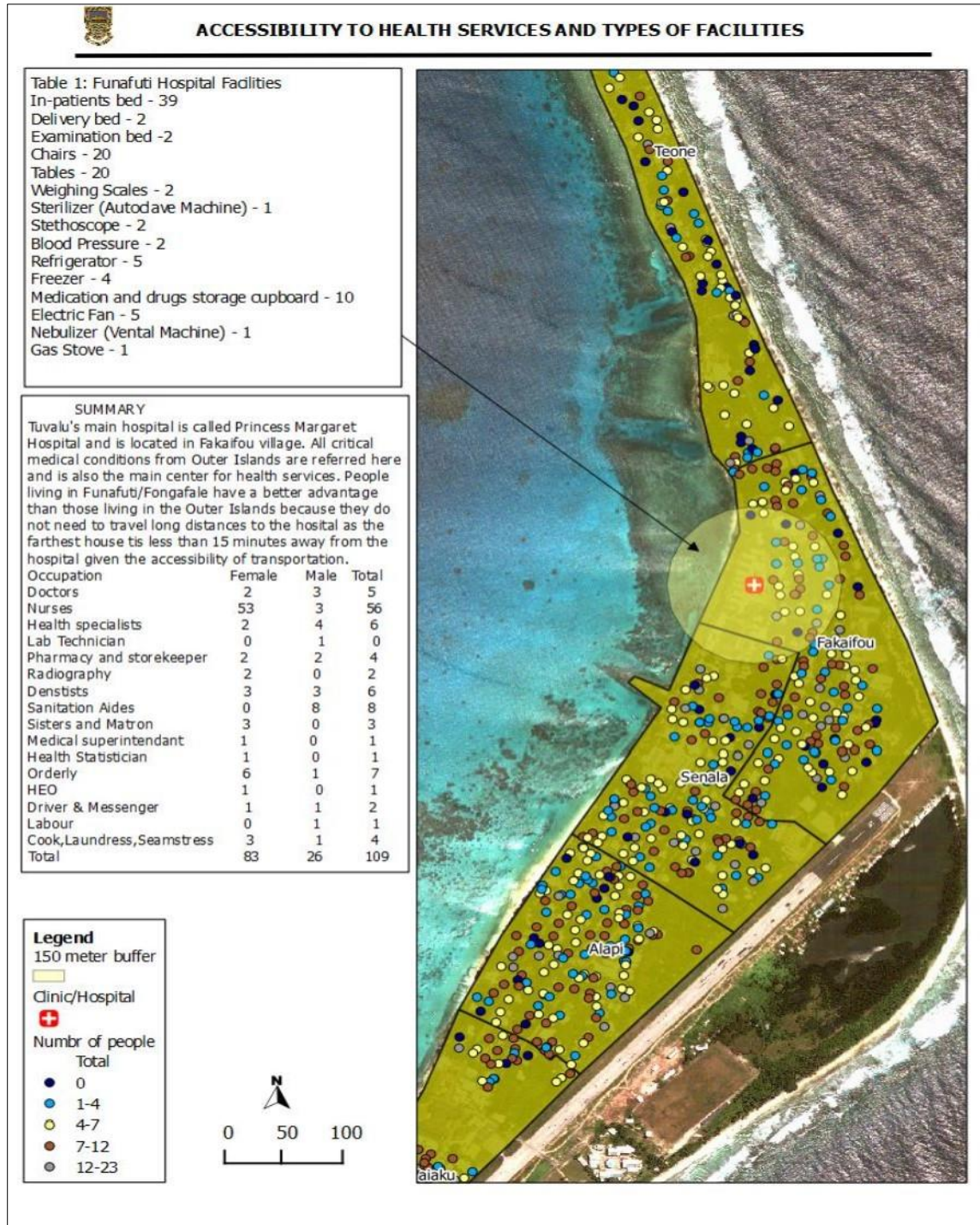
Pie Chart: % of Transportation

● Boat and Motor
 ● Boat
 ● Motor
 ● Canoe



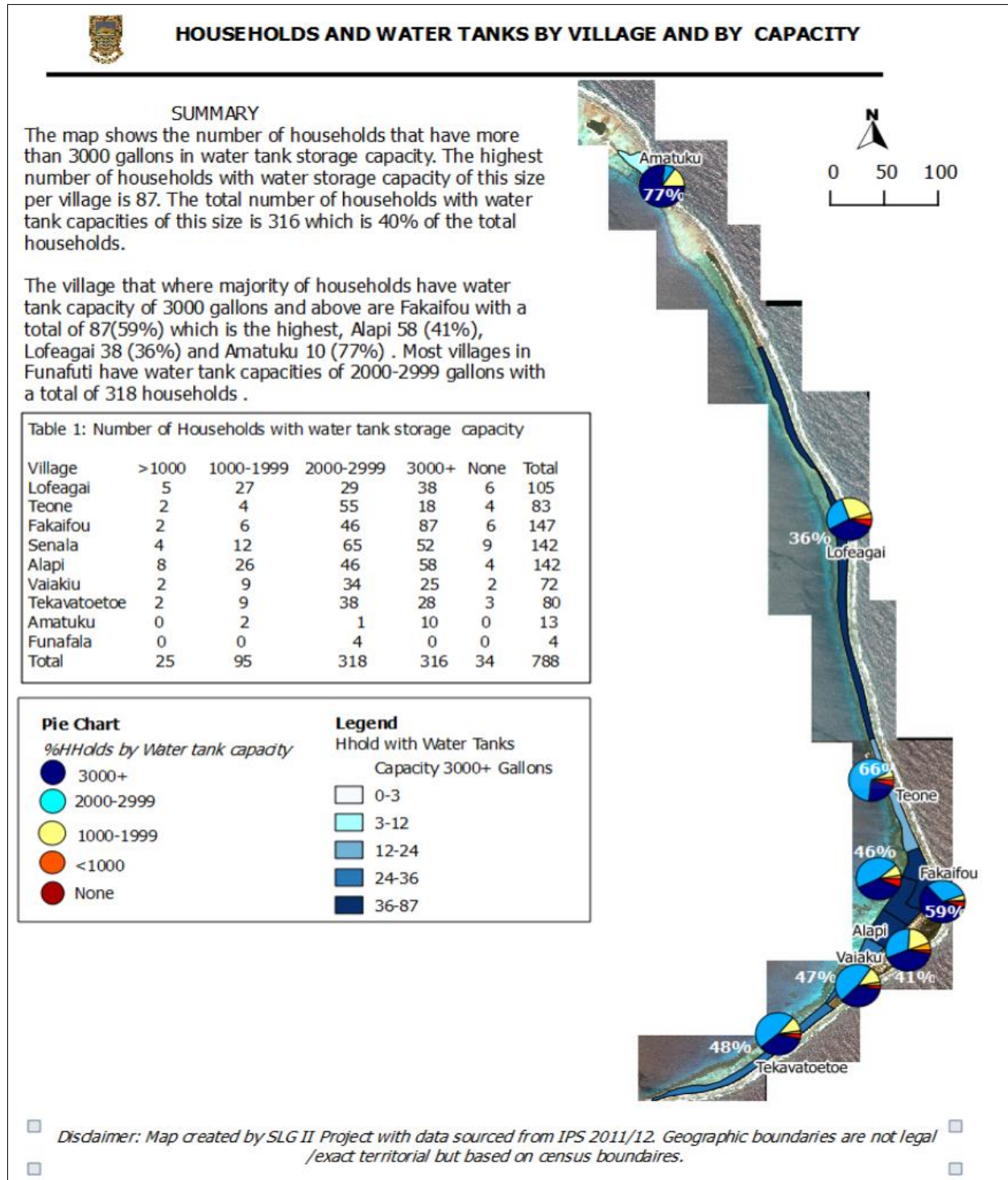
Disclaimer: Map created by SLG II Project with data sourced from IPS 2011/12 and Census 2002. Geographical boundaries are not exact/legal areas but are based on census boundaries.

7.7. HEALTH SERVICES⁷



⁷ Funafuti Island Profile (2012)

7.8 WATER & SANITATION



7.9. ISLAND DISASTER COMMITTEE CAPACITY TRAINING

Recommended trainings for the Funafuti Island Disaster Committee and other community disaster committee members on Funafuti include:

- a. **Climate Change awareness** training for women and youths.
- b. **Pre-Cyclone Season briefing:** (Tuvalu Meteorological Service, Department of Disaster Management, Tuvalu Red Cross)
- c. **Table-Top or Drills to test Standard Operating Procedures in plan.** (Department of Disaster Management, Tuvalu Meteorological Service, Tuvalu Police Services, Tuvalu Red Cross)
- d. **Community and Household Water Sounding and Surveillance:** National WASH Sector Coordination Group, Live and Learn Project.
- e. **Emergency Operations Centre training** (Department of Disaster Management, Tuvalu Red Cross, Tuvalu Police Services)
- f. **Disaster Assessment Team requirements/ Property Registration System/ Tuvalu Survival Fund** (Climate Change Department, Public Works Department)
- g. **Situation Report Form training** (Department of Disaster Management, Tuvalu Red Cross)
- h. **Funafuti Logistics Capacity Assessment** (Department of Disaster Management, Tuvalu Red Cross)
- i. **Gender Based Violence Referral System** (Gender Affairs Unit, Tuvalu Police Services, Tuvalu Family Health Association, Tuvalu National Council of Women, Tuvalu Red Cross)
- j. **Commercial First Aid/ Psychological First Aid** (Tuvalu Red Cross)
- k. **Agriculture Baseline Survey** (R2R Project, Department of Agriculture, Department of Environment, Lands & Survey)
- l. **Fisheries Baseline Survey** (Tuvalu Fisheries Department, Fishermen of Funafuti Association)
- m. **Funafuti Community Covid-19 Pandemic Plan** (Public Health, Department of Disaster Management, Tuvalu Red Cross)
- n. **MOU with Tuvalu Police Services** (Tuvalu Police Services, Attorney General's Office)

8. ANNEXES:

8.1 LIST OF PUBLIC/ PRIVATE WATER CISTERNS

	WATER CISTERN OWNER	TYPE	LOCATION
1	Pelesepa	Government	Te Kavatoetoe
2	Tulakiiga	Government	Vaiaku
3	Tomasi Puapua Convention Centre	Government	Vaiaku
4	Government Building	Government	Vaiaku
5	PWD 1	Government	Vaiaku
6	PWD 2	Government	Vaiaku
7	Seimeana Falekaupule	Community	Fakaifou
8	Faihouloto Falekaupule	Community	Fakaifou
9	Fakaiaimanu Falekaupule	Community	Fakaifou
10	Lotonui Falekaupule	Community	Fakaifou
11	Kainaki Falekaupule	Community	Teone
12	Talimalie Falekaupule	Community	Fakaifou
13	Tokotuu Falekaupule	Community	Alapi
14	Tausoa Lima Falekaupule	Community	Senala
15	Kaupule Office	Kaupule	Senala
16	Ulukai (Kaupule)	Kaupule	Senala
17	Princess Margaret Hospital	Government	Fakaifou
18	Marine	Government	Teone
19	Lofeagai Falekaupule	Community	Lofeagai
20	Amatuku	Community	Amatuku
21	Funafala	Community	Funafala
22	Papaelise	Community	Papaelise
23	Teutuniu T	Private	Alapi
24	Vaefitu P	Private	Alapi
25	Funa S	Private	Alapi
26	Filiki Moupa	Private	Alapi
27	Oyda Teo	Private	Alapi
28	Valoa L	Private	Alapi
29	Mamele M	Private	Alapi
30	Filigina T	Private	Alapi
31	Mavaega Pese	Private	Alapi
32	Pasefika P	Private	Alapi
33	Natano Elisala	Private	Alapi
34	Falaima (Double Storey)	Private	Alapi
35	Lupe. Miliama	Private	Alapi
36	Enele Sopoaga	Private	Alapi
37	Melina Schupp	Private	Alapi
38	Salemona	Private	Alapi
39	Teleke Apelu	Private	Alapi
40	Tupua (Vaisua)	Private	Vaiaku

41	Talia	Private	Vaiaku
42	Eliaki Mo	Private	Te Kavatoetoe
43	Tasii Pitoi	Private	Te Kavatoetoe
44	Telaa T	Private	Te Kavatoetoe
45	Enele Sopoaga	Private	Te Kavatoetoe
46	Lalaoniu S	Private	Te Kavatoetoe
47	Teatule	Private	Te Kavatoetoe
48	Jennifer	Private	Te Kavatoetoe
49	Feagaiga	Private	Te Kavatoetoe
50	Sumeo	Private	Te Kavatoetoe
51	Laloni S	Private	Te Kavatoetoe
52	Sam P Teo	Private	Te Kavatoetoe
53	Tepupu (Elisa K)	Private	Te Kavatoetoe
54	Enileta G	Private	Te Kavatoetoe
55	Betty F	Private	Senala
56	Matautu	Private	Lofeagai
57	Laupepa	Private	Lofeagai
58	Bikenibeu	Private	Lofeagai
59	Emily Koepke	Private	Lofeagai
60	Teitimani	Private	Lofeagai
61	Nia (Fakaifou) Jeff	Private	Lofeagai
62	Laki	Private	Lofeagai
63	Talafou	Private	Lofeagai
64	Moealofa	Private	Lofeagai
65	Leupena Paueli	Private	Lofeagai
66	Tanielu	Private	Teone
67	Telaki	Private	Teone
68	Paufi	Private	Teone
69	Penipelite	Private	Teone
70	Falavii	Private	Teone
71	Epenesa	Private	Teone
72	Kamuta	Private	Fakaifou
73	Iopu	Private	Fakaifou
74	Lomi Malologa	Private	Fakaifou
75	Ailesi (Tesimita)	Private	Fakaifou
76	Maatia T	Private	Fakaifou
77	Tautua	Private	Fakaifou
78	Alesana (Dr)	Private	Fakaifou
79	Gordon	Private	Fakaifou
80	Vine	Private	Fakaifou
81	Otinielu	Private	Fakaifou

82	Tihala	Private	Fakaifou
83	Sio	Private	Fakaifou
84	Tausili	Private	Fakaifou
85	Vavao S	Private	Fakaifou
86	Siava Temaia	Private	Fakaifou
87	Piita Polapola	Private	Fakaifou
88	Nalei	Private	Fakaifou
89	Italeli T	Private	Fakaifou
90	Tomasi	Private	Senala
91	Tautuu	Private	Fakaifou
92	Keli	Private	Senala
93	Teleke	Private	Senala
94	Polau	Private	Senala
95	Malisi (EKT)	Private	Senala
96	Iosefa (EKT)	Private	Senala
97	Oliula (EKT)	Private	Senala
98	Eleni O	Private	Senala
99	Pula	Private	Senala
100	Fanoga	Private	Fakaifou
101	Eunike Tonise	Private	Fakaifou
102	Samasoni Sauni	Private	Fakaifou
103	Falili T	Private	Fakaifou
104	Liki S	Private	Senala
105	Siaosi	Private	Senala
106	Noa Siaosi	Private	Senala
107	Aonga Kofe	Private	Alapi
108	Maui Taotao	Private	Alapi
109	Nimei Iona	Private	Alapi
110	Teaonata Iosua	Private	Alapi
111	Malofou (Halavai)	Private	Alapi
112	Grace Filipi	Private	Alapi
113	Taufailima F	Private	Alapi
114	TMTI	Community	Amatuku

8.2: LIST OF DOUBLE STOREY HOUSES ON FUNAFUTI.

EVACUATION CENTRE	TYPE	LOCATION
Sakaio Residence	Private	Lofeagai
Bikenibeu Residence	Private	Lofeagai
Taunuu Chapel	Community	Lofeagai
Lofeagai Evacuation Centre	Community	Lofeagai
Fetuvalu Secondary School	Government	Lofeagai
Titivalu residence	Private	Lofeagai
Fousaga residence	Private	Lofeagai
Gunter Koepke residence	Private	Lofeagai
Fatoga residence	Private	Lofeagai
Nafa residence	Private	Lofeagai
Moealofa residence	Private	Lofeagai
Talapai residence	Private	Lofeagai
Tuvalu Fisheries Department HQ	Government	Teone
Pier One Building	Private	Teone
Telaki residence	Private	Teone
Eti residence	Private	Teone
Sepoima residence	Private	Teone
Grace Pre School	Community	Teone
Alofamautasi Chapel	Community	Teone
Tianamo residence	Private	Teone
Tangisia residence	Private	Teone
Maryanne residence	Private	Teone
Falavii residence	Private	Teone
TCS	Private	Teone
JY Shop	Private	Teone
Seimeana Falekaupule	Community	Fakaifou
Maatia residence	Private	Fakaifou
Feleti residence	Private	Fakaifou
Mainaga Fou Chapel	Community	Fakaifou
Nanutasi Falekaupule	Community	Fakaifou
Faihouloto Falekaupule	Community	Fakaifou
Manatu residence	Private	Fakaifou
Italeli residence	Private	Fakaifou
Tavesia residence	Private	Fakaifou
L's Lodge	Private	Fakaifou
Eunike residence	Private	Fakaifou
Talimalie Falekaupule	Community	Fakaifou
Lotonui Falekaupule	Community	Fakaifou
Princess Margaret Hospital	Government	Fakaifou

Nauti Primary School	Kaupule	Senala
Tausoa Lima Falekaupule	Community	Senala
Fusi Alofa Association	Community	Senala
Ulukai	Kaupule	Senala
Ioapo residence	Private	Senala
FUSI	Private	Senala
Teitimani residence	Private	Senala
Tumua residence	Private	Senala
JY Shop	Private	Senala
Tekafa residence	Private	Senala
Nang Shop	Private	Senala
Apiseka residence	Private	Senala
Mckenzie Shop	Private	Senala
Esele residence	Private	Senala
Sioni residence	Private	Senala
Fetu Ao Lima	Community	Senala
Faiatea residence	Private	Senala
EKT Office	Community	Senala
Lotokava Falekaupule	Community	Alapi
Galau residence	Private	Alapi
Vaguna residence	Private	Alapi
Teagai residence	Private	Alapi
Peniasi residence	Private	Alapi
Telito residence	Private	Alapi
Tekafa residence	Private	Alapi
Seve residence	Private	Alapi
Tekena residence	Private	Alapi
SDA Primary School	Community	Alapi
Funa residence (Vailuatai Lodge)	Private	Alapi
Saitala residence	Private	Alapi
Uluao residence	Private	Alapi
Taape residence	Private	Alapi
Ampelosa residence	Private	Alapi
Kiatoa residence	Private	Alapi
McKenzie Falekaupule	Private	Alapi
Andrew residence	Private	Alapi
Sami residence	Private	Alapi
Falaima residence	Private	Alapi
Enele residence	Private	Alapi
Lupe residence	Private	Alapi

ESFAM Lodge	Private	Alapi
Kaituu residence	Private	Alapi
Faimala residence	Private	Vaiaku
Khousing - QE2 Park	Government	Vaiaku
Bungalows	Government	Vaiaku
NBT Bank	Private	Vaiaku
TELECOM	Private	Vaiaku
Airport Terminal	Government	Vaiaku
Funafuti Lagoon Hotel	Government	Vaiaku
Government Building	Government	Vaiaku
Tomasi Puapua Convention Centre	Government	Vaiaku
Tulakiiga Falekaupule	Government	Vaiaku
Filamona Lodge	Private	Vaiaku
Partnership House	Government	Vaiaku
TNPF building	Government	Vaiaku
Simeti residence	Private	Vaiaku
Laloniu residence	Private	Te Kavatoetoe
Te Kavatoetoe Hall	Community	Te Kavatoetoe
Pepetua Chapel	Community	Te Kavatoetoe
Taasi P residence	Private	Te Kavatoetoe
Penielu residence	Private	Te Kavatoetoe
Talu residence	Private	Te Kavatoetoe
Evotia residence	Private	Te Kavatoetoe
Manau Ship	Government	Teone
Nivaga 3	Government	Teone
ManuFolau 2	Government	Teone
Tai Nauti landing craft	Community	Teone
Moeiteava landing craft	Government	Teone
TMTI Classrooms	Community	Amatuku
TMTI Dormitories	Community	Amatuku
TMTI Falekaupule	Community	Amatuku

