

Chamber System Installation Requirements and Recommendations

Dickinson-Iron District Health Department

** Follow system design as specified on the site evaluation and sewage construction permit. Site conditions may dictate whether a single, multi-lateral, trench or bed type system needs to be installed.*

REQUIREMENTS

Installation

All chambers must be able to support an H-10 load rate (16,000 lbs/axle with 12" of cover).

The width of a trench for chambers is four (4) feet.

In a bed system the excavation must extend 6 inches beyond the sidewall of the outermost chamber laterals and the end plate(s).

The base of the excavation must be free of debris, smooth and as level as possible.

If any smearing or compaction occurs during the excavation process, hand rake or chisel these surfaces prior to installing the chambers.

Do not over excavate the area of the header in a multi-lateral system. This will minimize shifting of the header as it is crucial to maintain it in as level a position as possible to allow for equal distribution of the effluent.

A double header shall be installed when the header is greater than 20 feet.

A minimum of one observation tube must be installed on a single lateral system. It shall be installed on the last chamber in the lateral. On a multi-lateral system, a minimum of two observation tubes are required. (One on the last chamber of each of the two outer most laterals). This will not only allow the owner to monitor the system, but when necessary, simplify locating the system.

A footer must be installed on all multi-lateral systems. The footer must be installed on the **lower** outlet of the manufactured end plate. Once the footer is installed into the end plate the remaining annular space around the outlet must be properly sealed to avoid soil intrusion.

If sanitary T's are installed in the header of a multi-lateral system, they shall be installed in the reverse position.

Backfilling Requirements

While backfilling all chamber systems, every effort must be made to keep heavy equipment off the absorption system.

The backfilling material must be free of any large stones, frozen material or other debris.

In a trench system, the chamber sidewall must be backfilled first. This will provide support and prevent shifting of the chambers.

In a bed system, the outer most laterals must be backfilled first. Then as the areas between the chambers are being backfilled, provide compaction to achieve soil stability. Be sure to maintain the chambers in the original installation positions.

Avoid direct contact with the chambers when using large wheeled vehicles. Maintain a minimum of 12 inches of support between vehicle and chamber.

To prevent forcing the chambers down into fresh fill, do not drive across them with heavy equipment when backfilling across the top of the chambers. This will help maintain a level system. Only drive across the trench(s) or bed area when necessary and never drive down the lateral lengths.

Upon completion of its installation, the septic tank(s) shall have minimum final cover of six (6") inches.

RECOMMENDATIONS

Natural Soils

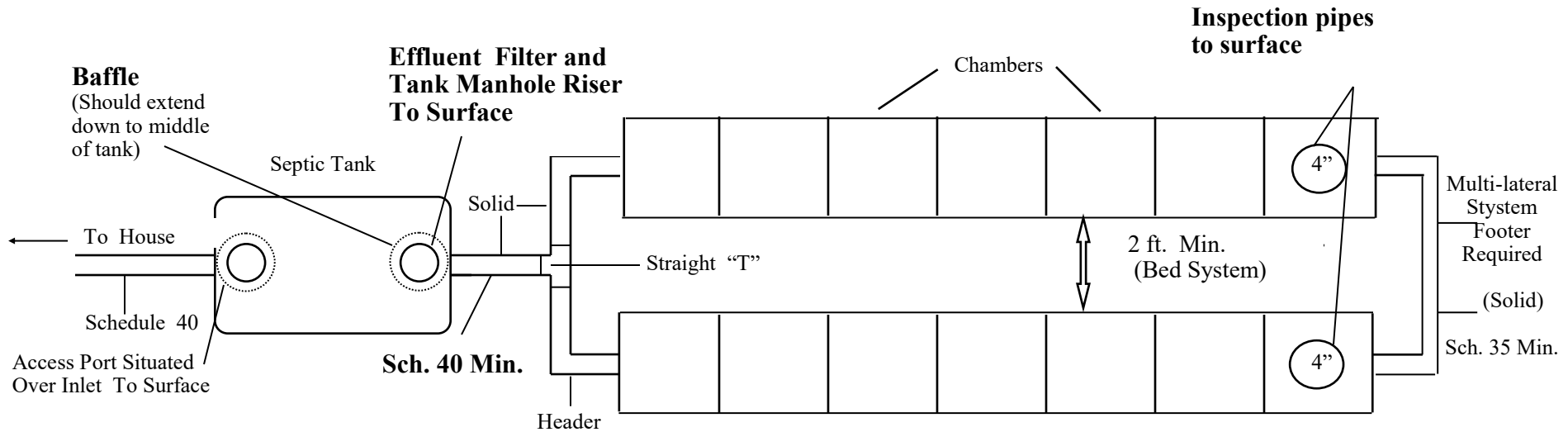
While installing the chamber absorption system, every effort should be made to keep heavy equipment from entering on to the disposal area.

A minimum soil cover over the chambers of twelve (12) inches is recommended.

Maximum soil cover should be in accordance with the manufacturer's specifications.

The installer should install a few screws through the area where the two chambers overlap. This will ensure that the chambers will not separate when they are being backfilled.

Home Sewage Disposal System Utilizing Chamber System

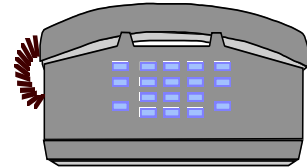


No. of Bedrooms	Tank Capacity (gallons)
1-3	1000
4	1250

- Septic tank must be a minimum of 5 ft. from building foundation.
- Septic system must be a minimum of 10 ft. from property line.
- Septic system must be a minimum of 50 ft. from any well.
- Septic system must be a minimum of 75 ft. from any surface water.
- High ground water table shall be at least 3 ft. below the base of the absorption system.
- Additional 250 gallons with garbage disposal.
- All sewage, including human excreta, garbage disposal wastes, dish water, bath water, laundry waste, etc., must first enter a septic tank prior to entering the absorption system.
- Treated spa pool discharge, water softener discharge lines, footing drains, and eaves troughs shall not be plumbed to the septic system.

Dickinson - Iron District Health Department

818 Pyle Drive Kingsford, MI 49802 Telephone: 779-7239	601 Washington Avenue Iron River, MI 49935 Telephone: 265-4172
--	--



Note: Actual number of chambers varies based on soil type and number of bedrooms. Refer to issued Septic Construction Permit for required number of chambers.

*** FOR A FINAL INSPECTION CALL 24 HOURS PRIOR TO COMPLETION OF THE SYSTEM.**