
STEAM
BGIN

SAMPLE

STEAM & INNOVATION ASSESSMENT TEST

STEAM BEGINNERS (Sample Paper)

(60 minutes)

INSTRUCTIONS

1. This paper consists of **FOUR** questions. Attempt **ALL** questions.
2. Full mark for this paper is **50** marks.
3. Necessary devices are allowed. The devices will be provided.
4. For demonstration purposes, Matatalab Coding Platform will be used in this paper.
5. Network connection is **NOT** given and **NOT** permitted.
6. Screen recorder will be used to prevent any forms of cheating. Any discrepancy in recordings will be subject to further investigation.

PART I

Question 1 – Motion and Turn Blocks (6 marks)

1. (a) How to go from **FOREST** to **DESERT**? (1 mark)



Please find a way by using these blocks ONLY.

1. (b) How to go from **FOREST** to **ISLAND**? (2 mark)



Please find a way by using these blocks ONLY.

1. (c) How to go from **VOLCANO** to **MOUNTAIN**? (3 mark)



Please find a way by using these blocks ONLY.

Question 2 – Fun Blocks (5 marks)

2. (a) How to go from **GRASSLAND** to **RIVER** and play some **MUSIC**, and then go from **RIVER** to **VALLEY**? (2 marks)



Please find a way by using these blocks ONLY.

2. (b) How to go from **VALLEY** to **ISLAND** to play some **MUSIC**, and then go from **ISLAND** to **SNOWFIELD** to **DANCE**, and then go from **SNOWFIELD** to **GOBI**? (2 marks)



Please find a way by using these blocks ONLY.

Question 3 – Number Blocks and Obstacles (6 marks)

3. (a) How to go from **CLIFF** to **SNOWFIELD**? (3 marks)



Please find a way by using these blocks **ONLY**.

**** You must use NUMBER Blocks**

3. (b) How to go from **FOREST** to **DESERT**? (3 marks)



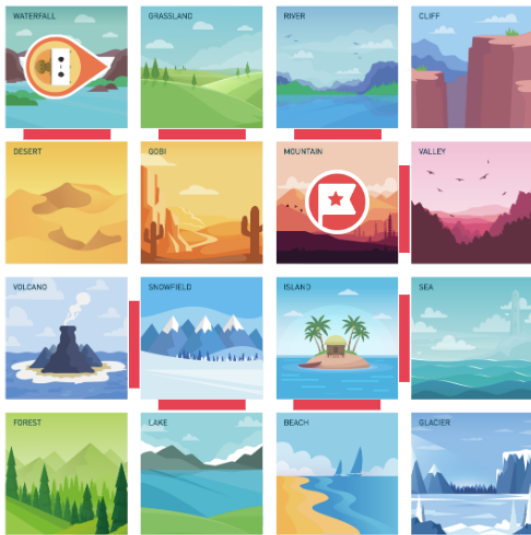
Please find a way by using these blocks **ONLY**.

**** You must use NUMBER Blocks**

PART II

Question 4 – Loops and Functions (33 marks)

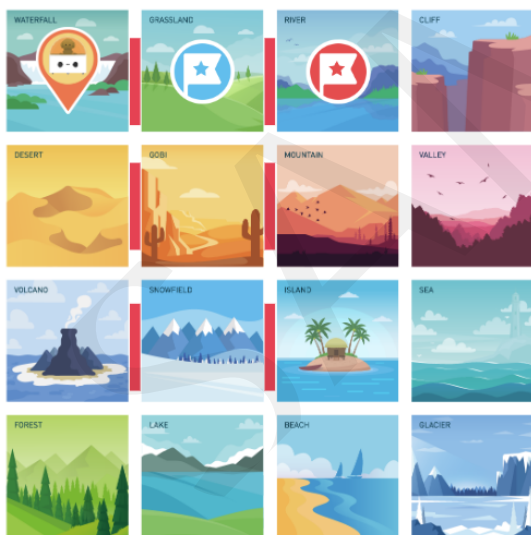
4. (a) How to go from **WATERFALL** to **MOUNTAIN**? (10 marks)



Please find a way by using these blocks **ONLY**.

**** You must use NUMBER Blocks**

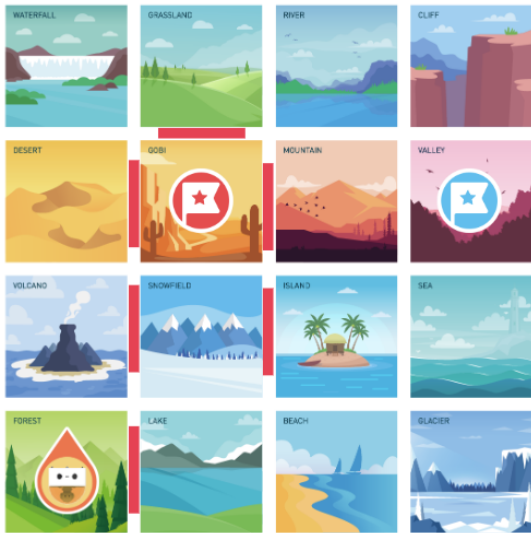
4. (b) How to go from **WATERFALL** to **GRASSLAND**, and then go from **GRASSLAND** to **RIVER**? (10 marks)



Please find a way by using these blocks **ONLY**.

**** You must use NUMBER Blocks**

4. (c) How to go from **FOREST** to **VALLEY**,
and then go from **VALLEY** to **GOBI**? (13 marks)



Please find a way by using these blocks **ONLY**.

**** You must use NUMBER Blocks**

- END OF PAPER -