

SIGMA INTELLIGENCE AND TALENT HUB

“Your Transformational Catalyst for Growth”



***Strategic HR Learning, Capability Development and
Organizational Excellence***

Empowering organisations across the GCC to unlock human potential



www.sigmaintelhub.com



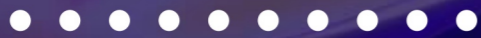
VISION



To be the catalyst for transformation, where holistic human development is at the heart of every organization.



MISSION



To Empower businesses to unlock their full potential by cultivating a culture of continuous learning and growth.





ABOUT US

• • • • •
www.sigmaintelhub.com

MID & LARGE MARKET

We partner with mid-market enterprises and large organizations across the GCC to design and implement strategic learning and talent development programs that create real, measurable impact.

TRANSFORMATIONAL CATALYSTS

We are not just consultants, we are collaborative partners who work alongside your leadership team to build capability, accelerate growth, and create cultures where people thrive.

INDUSTRY EXPERTS

With deep experience in HR transformation, learning design, organizational development, and talent management, we understand the unique challenges for ambitious organizations in the UAE and GCC region.



With deep GCC market understanding, we deliver localized solutions that combine international best practices with regional context



1

Specialised Pathways to Professional Excellence

The core components that build a strong foundation for success

01



Emerging Leaders program

Designed to prepare high-potential professionals for future leadership responsibilities by strengthening their leadership mindset, decision-making, and influence. Participants develop the confidence and skills needed to successfully transition into leadership roles.

02



Art of Communication Intelligence

Empowering professionals to communicate with clarity, confidence, and impact across diverse workplace situations. The program focuses on building meaningful connections, influencing stakeholders, and mastering the art of effective workplace communication.

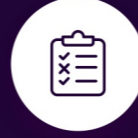
03



Emotional Intelligence at work

Helping individuals understand and manage emotions effectively to build stronger relationships, enhance collaboration, and improve workplace performance. Participants develop self-awareness, empathy, resilience, and interpersonal effectiveness.

04



Leadership Development Programs

Equipping leaders with the skills, mindset, and strategies required to inspire teams, drive performance, and achieve organizational goals. The program focuses on leadership presence, accountability, strategic thinking, and people management.

05



Coaching & Mentoring

Developing leaders who can unlock the potential of others through meaningful coaching conversations and effective mentoring practices. Participants learn techniques to support employee growth, enhance engagement, and build future talent pipelines.

06



Lean Six Sigma Green Belt Concepts

Providing professionals with practical tools and methodologies to improve processes, eliminate inefficiencies, and drive continuous improvement. Participants learn structured problem-solving techniques that enhance operational excellence and business performance.

07



Change & Conflict Management

Enabling professionals and leaders to navigate organizational change while managing workplace conflicts constructively and professionally. The program equips participants with strategies to foster collaboration, resilience, and positive outcomes during periods of uncertainty.

Our SIGMA Methodology

“Sigma Support Loop “



Experience

Provide best learning experience through Micro Learning concept

Apply

Initiate a robust **action plan** in alignment with the organisaitonal and Individual goal



Retain

Monitor the progress through the support coaching sessions

Transform

Celebrate the win through visible learning achievements



2

Talent Development & Workforce Transformation Solutions



Talent Growth

Career Development

Empowering professionals with the skills, mindset, and strategies needed to accelerate career growth and achieve long-term success. Programs focus on career planning, personal branding, communication, and professional effectiveness.



Graduate Development

Preparing fresh graduates to transition successfully from academia to the workplace through practical business skills, workplace readiness, communication, and professional confidence-building.



Emirati Catalyst Leaders Program

Developing high-potential Emirati talent into influential future leaders through leadership development, emotional intelligence, strategic thinking, and organizational impact initiatives.



Mentorship Program

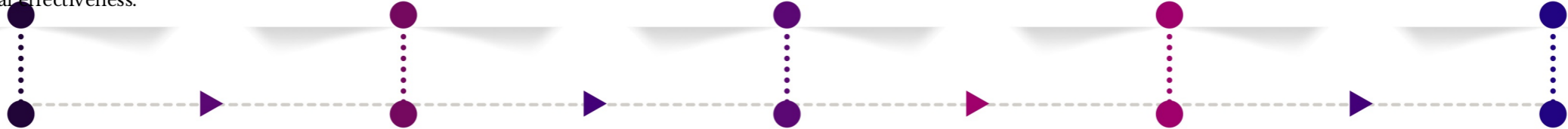
Structured mentoring solutions that connect employees with experienced leaders to accelerate learning, enhance performance, and support career progression through meaningful guidance and knowledge transfer.



Workplace Well-Being

Mental Health Assistance Workshops

Promoting employee well-being through awareness sessions, resilience-building workshops, stress management strategies, and practical tools that support a healthier and more productive workforce.



Mastering Personal Branding

Helping professionals build a powerful and authentic personal brand that enhances credibility, visibility, and career opportunities. Participants learn how to position themselves as trusted experts both online and offline.



Public Speaking Masterclass

Developing confident and impactful speakers who can engage, influence, and inspire any audience. Participants learn storytelling techniques, presentation skills, audience engagement, and strategies to overcome stage fear.



Customer Service Excellence

Equipping employees with the skills to create exceptional customer experiences that build loyalty and strengthen organizational reputation. The program focuses on communication, service mindset, problem-solving, and customer engagement.



Building Resilience In Uncertainty

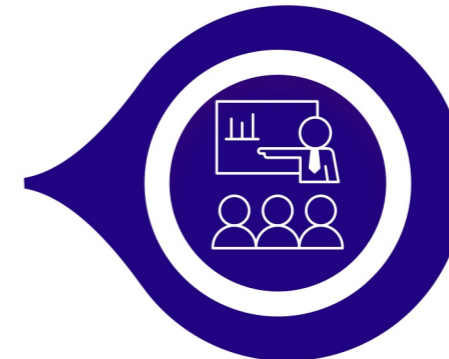
Empowering individuals to effectively navigate change, setbacks, and workplace challenges with confidence and adaptability. The program provides practical tools to strengthen mental resilience, emotional agility, and sustained performance under pressure.

SIGNATURE DEVELOPMENT PROGRAMS



Women In Leadership

Empowering women to lead with confidence, influence, and authenticity while navigating workplace challenges and opportunities. Participants develop leadership presence, strategic thinking, and executive-level communication skills.



Train The Trainer

Designed to transform subject matter experts and professionals into confident, engaging, and impactful facilitators. Participants learn adult learning principles, facilitation techniques, instructional design, presentation mastery, and learner engagement strategies to deliver high-impact training experiences.

3





SUJA HARISH

Founder & Managing Director

Sigma Intelligence and Talent Hub FZE

9000+
sessions

50K+
Influence

20+
Experience
Yrs

45+
Courses designed and delivered

Meet The Founder



Achievements

- UAE Icon — Global Business Leaders Summit & Influencers Awards Dubai 2025
- Honored by PRA & Dubai Medical University for contribution towards regulatory professionals
- Chartered Fellow CIPD
- Certified Organisational Development Coach
- NLP Practitioner Coach
- Emotional Intelligence & Behavioral Coach
- Six Sigma Black Belt
- Awarded “WOMEN IN LEADERSHIP, in the Global business leaders summit and influencers awards Dubai 2025
- Train the Trainer professional(ATD)
- Certified Human Resource Management professional (CHRMP)

Result Oriented

Designed and delivered transformative leadership programs across diverse industries, empowering executives and teams to cultivate a growth mindset, enhance emotional intelligence, and drive organizational success

“The secret sauce for my programs is the unique blend of strategy and psychology that deliver real results.”



Client Testimonials

The Journey has been truly enriching, guided by the incredible expertise of Suja Harish, whose insights and real world applications have broadened my understanding of effective people management and leadership

Mary Antoinette

I had the pleasure of attending a training session led by Suja, and it truly stood out as one of the most enriching and impactful learning experience I have had.

What impressed me most was her ability to simplify complex management concepts and translate them into practical, actionable strategies. The session was not just informative, but also highly engaging, reflective and thought-provoking. It gave me the opportunity to evaluate my own management style and equipped me with valuable tools to enhance team collaboration, navigate challenges and lead more confidently. I would wholeheartedly recommend Suja to anyone seeking to strengthen their leadership and management capabilities.

Viji Vijayan

Her training sessions are unimpeachable, and I strongly recommend Suja to any organisation. She is excellent at training and mentorship. She is very passionate and inspiring, her training sessions are very interactive and ensures active participation of all attendees, which makes her such an effective and motivational trainer.

Renjith

Working with Suja Harish was a game changer for me. Thank you for time spent coaching me to get started on my goal and the progress I have made in achieving it. Suja, Your style and method is very effective, helping me to refocus my energies.

Amritha Sharma

I had the pleasure to attend a great session on communication skills led by Suja Harish (Chartered FCIPD) She shared powerful and practical insights into effective communication skills which we can benefit from both personally and professionally. Thank you for your energy and inspiration!

Sara Khoudier

The session was both interesting and fun, filled with engaging activities and valuable insights. Suja demonstrated deep knowledge of the topic and the games helped us connect with the concepts in a practical way. I gained tips on controlling emotions, becoming a better listener, and growing to succeed in all that we do. The training inspired me and every one in the session to apply these lessons in our daily lives.

Thank you for an impactful experience.

Bijo Daniel



Why Choose Us?



Real Organizations. Real Challenges. Real Results



GCC Market Expertise

Deep understanding of UAE/GCC business context, talent market, regulatory landscape, and organizational culture. Our solutions are locally relevant and globally informed.



Partnership Approach

We work alongside your team as true partners, not external vendors. Your success is our SUCCESS.



Results Focused Approach

Every initiative is designed around business outcomes- retention, productivity, quality and measurable ROI.



Customization, not out of the shelve solutions

We customize every solution to your organizational culture, process, and specific challenges. One size fits all doesnt work.

Contact Us



+971565462334

Info@sigmaintelhub.com

www.sigmaintelhub.com

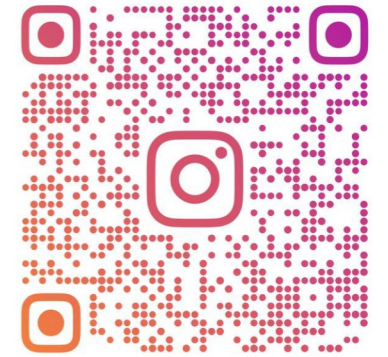
Sharjah Business center, UAE

@Sigmaintelhub

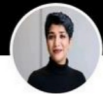


**Sigma
Intelligence and
Talent Hub**

Trusted Growth Partner



SIGMAINTELHUB



Suja Harish, Chartered FCIPD
Mindset Strategist & Growth
Advisor | Help Leaders & HR Buil...

