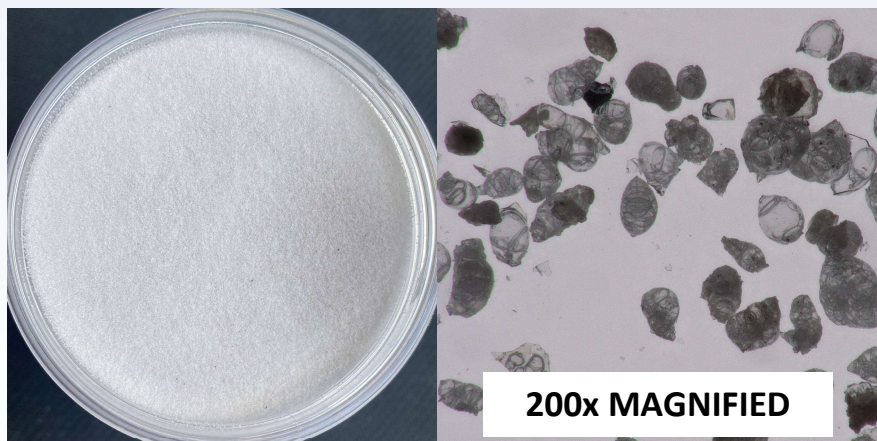




## Spex•Lite® 9185 Lightweight Sand

Spex•Lite® 9185 is a patent-pending engineered mineral microbead designed as a high performance and user friendly partial replacement of conventional sand in lightweight cementitious, resinous, and roof coating systems. Providing approximately 80% less weight than traditional silica sand, it enables formulators to significantly reduce density while maintaining outstanding mechanical performance and application characteristics.

Its proprietary spherical particle geometry enhances workability, pumpability, sprayability, printability, and finishing, making it an excellent choice for floor levelers, self-leveling underlayments, GFRC, 3D concrete printing, precast concrete, lightweight repair mortars, and liquid-applied roof coating systems. Low absorption, excellent thermal stability, minimal color impact, and the absence of free crystalline silica provide formulators with a high-performance aggregate that improves handling while supporting consistent manufacturing and field performance.



200x MAGNIFIED

### Product Advantages

- ~80% Lighter than sand
- **\*\*ONLY 900# = 4,500# OF SAND\*\***
- Improves pumpability and workability
- Lower absorption—better economics
- Incorporates well into systems
- No free crystalline silica
- Minimal impact on finished color

### Technical

Property	Measure	Value
Avg. Particle Size	µm	150 – 175
Avg. Bulk Density	pcf	~20
Specific Gravity	g/cm3	0.54
Isostatic Strength	PSI	~1,000

### Physical

Softening Temp	~1,580-1,920°F
Color	Off White
pH	6.5 – 8
Surface Moisture	<0.2 Mass %
Particle Shape	Sphere / Egg

- Average bulk density and typical size may vary; values provided indicate normal averages. PCF refers to pounds per cubic foot.
- No warranty is expressed or implied and suitability for use in a particular application is the sole responsibility of the user.