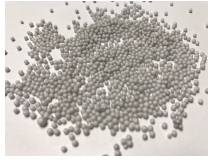




Ultra Light Filler Beads



ACCREDITED BUSINESS



Spex•Lite® 6724 Technical Data Sheet

Product Description

Spex•Lite® 6724 is a patented ultra light filler bead. It is engineered with an FR modified polystyrene and is manufactured to exacting specifications. The beads are formed as distinct, closed cell, foamed pellets having extremely low bulk densities.

Spex•Lite® 6724 provides **substantial weight savings** over ordinary filler materials, allowing decreased final product weights, as well as:

- Increased filler efficiency
- Decreased packaged weights
- Negligible resin absorption
- Tight particle size distribution
- Rounded shape
- Insulative properties

Applications include a wide range of uses, including: high build / lightweight coatings, texture paints, insulative coatings and compounds, adhesives, sealants, spackling materials, joint fillers, oil & gas, backing pastes and insulating putties, emulsion explosives, concrete mixtures and cementitious systems, lightweight aggregates and additives and transportation components.

Material Properties

Bulk Density		Nominal Bead Size			Softening Temperature (°F)	Material Composition
Average (pcf)	Typical Range (pcf)	Average (mm)	Typical Range (mm)			
1.2	1.0 - 1.5	1.8	1.1 - 2.6	200	Prop. Polystyrene	

Material Form: Free-flowing polymer beads, primarily white in color

Bulk density: Shown in pounds per cubic foot (pcf); bead size is in mm.

Water / resin absorption: 2-3% maximum, by weight.

R-Value per inch: ~3.8 - 4.0

For further information on the above product, or to discuss your specific needs, please call us at (440) 462-1500, or email us at info@spexlite.com.

**Please note the above information is from sources considered to be reliable, but no warranty is expressed or implied. Suitability in a particular application is strictly the responsibility of the user. US Patents Pending.*