

2024 Fall Service and Pricing Guide



Contents

| | | | |
|-------------------------------------|----------|----------------------------------|--------------|
| Storage Tips | 3 | Other Services | 9 |
| Repair List | | Boat Delivery Service | |
| Mechanical Repairs | | Cushion Cleaning | |
| Cushions | | Jayne Parker Wood Refinishing | |
| Sails & Canvas | | Steering System Tune Up | |
| Dinghy Storage | | Cradle Service | |
| Water Tanks & Fuel Conditioners | | Remove Gear for Service | |
| Halyards & Running Rigging | | | |
| Cradle Check | | | |
| Scheduling Information | 4 | Masts & Rigging | 10 |
| Schedule Your Arrival | | Full Service Mast Unstepping | |
| Before Leaving the Harbor | | Owner Prepared Mast Unstepping | |
| Calumet River Bridge Openings | | Mast Rack Storage | |
| Docking Instructions | | Sail, Canvas & Rigging Removal | |
| Metra Shuttle | | Winch Service | |
| | | Hydraulic Repairs and Service | |
| | | Sail Service | |
| | | Lifeline Inspections | |
| Check-in & Work Orders | 5 | Masts & Rigging | 11 |
| Locks, Keys & Combinations | | Mast Inspections | |
| Check-in | | Furling Service and Inspection | |
| Equipment Left on Board | | Other Rigging Services | |
| Estimates—Service Requests | | | |
| Yard Access | | | |
| Directions | | | |
| Engine Systems Winterization | 6 | Indoor Storage Guidelines | 12 |
| Engine Winterization | | Exhaust Fluids | |
| Oil & Filters | | Antifreeze | |
| Fuel Filters | | Sanding/Grinding/Painting | |
| Engine & Drivetrain Inspection | | Water Hoses | |
| Impellers | | Unstepping | |
| Batteries | | Mast Storage | |
| | | Waste Oil & Fuel | |
| Additional Engine Services | 7 | Storage Solutions | 13 |
| Stuffing Boxes | | Shrink Wrap | |
| Outboard Storage | | Plastic Covers | |
| Saildrive Service | | Cover Installation | |
| Outdrive Service | | Storage Lockers | |
| Internal Coolant Flush | | | |
| Transmission Service | | | |
| Prop Service | | | |
| Replace Anodes | | | |
| Water Systems Winterization | 8 | Ship's Store | 14/15 |
| Water Systems | | CYY Directory | 16/17 |
| Winterize Head and Holding Tank | | Sailboat Sales | 18 |
| Pump Out Holding Tank | | Fall 2024 Service Form | 19 |

Storage Tips

The end of summer is the best time to start planning your 2025 boating season. The best time to get ready for next spring is now -while your boat's needs are fresh in your mind. Your final sail is a great time to take note of routine maintenance and upgrades. Here are a few tips to help you when you put the boat away for the season.

Repair List

Start your repair and upgrade list during the last few outings and on your return to Crowley's. Crowley's is open all winter and prepared to do the work you need. Many projects can be done in the fall and over the winter.

Mechanical Repairs

If you have a repair that you think may require a sea trial or running your boat in the water, please contact us before you arrive at the yard so we can make arrangements to perform the necessary tests prior to haul out.

Cushions

Like sails and canvas, all cushions should be removed from the boat. If you don't have storage space, consider taking at least some of the small cushions home. Flip up the remaining cushions to allow air to circulate. See page 9 for *Crowley's Cushion Cleaning Service* & page 13 for *Storage Locker Rentals*.

Sails and Canvas

Fold and bag all sails and canvas. Store in a dry location off the boat. Remove all furling headsails within one week of arrival. See page 10 for *Crowley's Sail Service Program* & page 13 for *Storage Locker Rentals*.

Dinghy Storage

You may keep your dinghy at Crowley's over the winter. Make sure your boat name is clearly marked on the dinghy. See the dock master for instructions on where to put it. **Remove oars, cushions and other loose items** before you leave your dinghy with the dock master.

Water, Fuel and Waste Tanks

Drain water tanks. Add fuel conditioner on your inbound cruise and pump out your holding tank before you leave the harbor

Halyards and Running Rigging

Secure your halyards away from the mast to avoid chafing. Better yet, remove running rigging and replace halyards with messenger lines. Store these lines in a dry place out of direct sunlight.

Cradle Check

Take some time to come down to the yard and inspect your cradle. Make sure that it is in good condition and make or order any necessary repairs. Call Customer Service to order cradle repairs or if you have any questions.



Scheduling Information

Scheduling

Crowley's lakeside location allows us a great deal of scheduling flexibility. However, we still need you to schedule your arrival in advance. **All boats must complete the online *Fall Service Form* -- even if you do all the winterization yourself.** Please schedule your inbound date at least **2 weeks prior** to your arrival. Call Customer Service one week prior to confirm your arrival date. **Boats arriving unscheduled will be assessed a \$250 unscheduled arrival fee.**



Before Leaving the Harbor

1. Pump out your holding tank.
2. Add fuel conditioner to your fuel tanks.
3. Drain all water tanks and your water heater.
4. Make a list of all those things you would like to get done this winter.
5. Notify your Harbor Master of your departure.

Calumet Bridge Openings

The 92nd Street/Ewing Avenue and 95th Street bridges open on demand. They are manned 24 hours a day, 7 days a week. Boaters requiring a bridge lift should hail the 92nd Street/Ewing Avenue Bridge tender on **VHF Channel 16** as they near the bridge (within 100 yards). Identify yourself, give the bridge tender your boat name, whether you are traveling inbound or outbound and your destination — **CROWLEY'S** and request a bridge lift. Be sure to give commercial traffic a wide berth. Also, if you see other mast up vessels nearby, try to transit the bridges together. Crowley's will also be monitoring Channel 16.

Docking Instructions

Crowley's Yacht Yard South Docks and hauling facilities are on the south side of 95th Street. Most boats will be hauled there. You must continue past the 95th Street Bridge to reach our South Docks. Some boats will be hauled at our North Docks. If we are going to haul your boat at our North Docks, we will let you know during the confirmation process. Please secure your **boat port side to**, with **three fenders** and **four dock lines** (bow, stern and two spring lines).

Metra Shuttle

Metra operates a commuter train that originates in Grant Park and has a stop just 3 blocks from Crowley's Lakeside. Info on the service can be found on the web at <http://metrarail.com>. Crowley's will be happy to shuttle riders to and from the 93rd Street/South Chicago Station. To get a ride to the station, just stop in the office and ask. To be picked up at the 93rd Street/South Chicago Station, give us a call when you get there and we will send a van to pick you up. See page 14 for a schedule and more information.

Check-in and Work Orders

Locks, Keys and Combinations

We ask that you use combination locks on the main hatch and ladder. Ignition keys should be on a floating ring, left at the navigation station or in the galley sink. If your main hatch requires a key, we would like **only** that key, left with the dock master or with Customer Service. Leave your battery switches in the off position.

Check In

Be sure to check in with the Dock Master upon arrival. Please verify all your contact information and leave keys and/or your combination and review your winterization work orders and other requests for service.

Equipment Left on Board

Removing all of the equipment is the best way to store your boat but not always the most practical. Equipment left on board should be cleaned, dried and neatly stowed, leaving room for service crews to access compartments. (see page 13 for Storage Locker Rentals)

Estimates - Service Requests - Fall Winterization Orders

Please return all paperwork promptly. If you are unsure about something, just complete all the sections you are sure of, and mark the rest with a question mark. We'll be happy to call you to clarify.

Yard Access

During our peak hauling season it will be necessary for us to limit vehicle traffic in our primary work areas. Please do not park in the Travel Lift staging area or in the mast unstepping area. Signs will be posted delineating these spaces.

Hours

Customers are allowed access to their boats seven days a week throughout the year. For current office, Ship's Store and repair shop hours please consult the website.

Directions

See our website for detailed directions and maps to Crowley's Yacht Yard Lakeside facility.

Crowleys.com/hours-directions



Engine Systems Winterization

Crowley's winterization and fall maintenance program is designed to fully protect your engines from freeze damage and provide basic maintenance. During winterizing our mechanics inspect your engines and will recommend necessary additional maintenance and upgrades. Annual inspections help to keep your engines running trouble free. We recommend oil, oil filters and fuel filters be changed during winterization.

Prices listed are for labor only. Filters, oil, anti-freeze etc., are additional.

Full Service Winterization with Oil, Oil Filter, Fuel Filter Change and Drivetrain Inspection.

This is the premium service for customers that want to be assured that their engine is fully protected from the harsh Chicago winters. Your boat will be hooked up to our specialized winterizing vehicles and -100 degree non-toxic antifreeze is run through your cooling system. Our mechanics run your engine and inspect it during this process. Manufacturers recommendations for scheduled service are consulted and oil, oil filters and up to two fuel filters per engine are changed. Fuel stabilizer is added to the fuel tank and gas engines are fogged (top cylinders are lubricated). Our Technicians will also perform a detailed inspection of your drive train and engine. You will receive a report with their findings to help you stay on top of engine maintenance.

Sailboats & Generators: Gas & Diesel \$550.00

Powerboats: Gasoline \$585.00

Powerboats: Diesel \$740.00

Per Engine + Parts

Engine Winterization Only

Same as above without the oil, oil filter & fuel filter change or drivetrain inspection.

Sailboats & Generators: Gas & Diesel \$250.00

Powerboats: Gasoline \$260.00

Powerboats: Diesel \$395.00

Per Engine + Parts

Oil and Oil Filter Change Only

For customers that like to winterize their own engines but would rather leave the oil & filters to us.

Sailboats & Generators: Gas & Diesel \$235.00

Powerboats: Gasoline \$290.00

Powerboats: Diesel \$450.00

Per Engine + Parts

Fuel Filter Change Only

First filter \$72.00

Each additional filter \$33.00

Engine & Drivetrain Inspection

Included with a full service winterization. Have our expert technicians visually inspect your engine drive train for damage, wear and corrosion. This service is included with full service engine winterizing. We will look at your propellers, shaft, struts, cutlass bearings, shafts & propeller zincs. Included is a visual inspection of your engine where all belts, hoses, electrical connections and fluid levels are inspected. If service is indicated we will send you a detailed estimate for the recommended maintenance.

\$165.00

Change Impeller

We recommend that impellers be changed every two years. If you are not sure when you had it done—it is time.

\$165.00 hr

Plus parts

Battery Service

Most batteries will be removed from the boat. Larger batteries may be serviced on the boat at our discretion. We clean and inspect them at removal. Over the winter we will periodically charge them. In the spring the batteries are inspected, and load tested again. If a battery fails load testing you will be notified about replacement options. Any battery passing the load test will be reinstalled.

Group 24-31 \$65.00 per battery

4D-8D \$85.00 per battery

Additional Engine Services

Repack Stuffing Boxes

Most drive shafts and some rudder shafts have a packing material that allows them to turn freely while keeping water from entering your boat. Periodically, this packing material must be replaced. If you have not had your stuffing box or rudder ports serviced recently it is a good idea to have it done while your boat is out of the water. **Note: Requires an engine start. Performed in spring and billed separately**

\$165.00 per engine
Plus parts

Outboard Motor Service with a Spring Start

For 10 hp and smaller engines. Lower unit oil is changed. The engine is test run in the spring. Tune-ups and other services can be provided at an additional charge. Larger engines will be serviced on a time and materials basis.

\$395.00
Plus parts

Outdrive Service

Crowley's mechanical technicians will remove your stern drive, inspect and service pivot points, u-joints, and gimbal bearings, inspect all bellows, shift cable, intake water hose, zincs, casing, coupler, propeller and prop shaft, making recommendations for any necessary repairs. The drive is then reassembled, all grease fittings are serviced, proper engine alignment and the coupler are also checked. In the spring we will start the engine, perform a 12 point check and check the drive for proper operation. **Note: Requires an engine start and sea test. Performed in spring and billed separately**

\$395.00 per drive
Plus parts

Saildrive Service

We drain flush and refill your saildrive with the manufacturers recommended lubricant. If present filters are changed and the casing and zincs are inspected for corrosion. We'll call you with recommendations if additional repairs are indicated. **Note: Requires an engine start. Performed in spring and billed separately**

\$195.00
Plus parts

Internal Coolant Flush and Replacement

Engine manufacturers recommend that the internal cooling system on your marine engine be flushed and the coolant replaced every 3-5 years. Our mechanics will drain your internal cooling system and flush out the accumulated rust and sediment. We visually inspect the hoses, heat exchanger, water pump and all components of your cooling system. Once flushed, we replace the coolant with premium coolant per the manufactures recommendation. **Note: Requires an engine start. Performed in spring and billed separately**

\$295.00 per engine
Plus parts

Transmission Service

We drain, flush and refill your transmission with the manufacturers recommended lubricant. If present, filters are changed. **Note: Requires an engine start. Performed in spring and billed separately**

\$175.00 transmissions w/o filter
\$245.00 transmissions with Filter
Plus parts

Service Prop

We will disassemble the prop, inspect it for unusual wear, grease, reassemble and replace the anode if needed. We will give you a call if additional repairs are indicated.

\$200.00
Plus parts

Replace Anodes

Sacrificial anodes are designed to protect metal components on your boat that are susceptible to galvanic corrosion. They can be located on your propeller shaft, hull, propeller, saildrive, outdrive or trim tabs. They require regular replacement. We will inspect all of your external anodes and replace the ones that have reached the end of their usable lives.

\$85.00 per Anode
Plus parts

Water Systems Winterization

Winterization Preparation

Crowley's winterizes your water system by filling the system with non-toxic propylene glycol. This environmentally safe anti-freeze offers protection down to negative 50 degrees Fahrenheit by turning to slush but not expanding, protecting your pumps, tanks and water systems from bursting.

Before you leave the harbor be sure to:

1. Pump out the holding tank
2. Drain the water tanks

Water Systems Winterization

Pricing is based on the size of your system. List any special instructions or notes on your order form. Prices listed are for labor only. Anti-freeze additional.

Winterization of the Basic System (1 tank, 1 pump, 1 faucet)

Our technicians will check to make sure your tank is drained (and drain it if necessary. Charges apply.) We will hook our equipment up to your water system and pump non-toxic, water system antifreeze through the pump and faucet.

\$165.00
plus materials

Minor Additional Components

Including sink pumps, bilge pumps, bilge, faucets, showers, and additional tanks.

\$15.00/ea
plus basic system winterization

Major Additional Systems

Including water heaters, ice makers, refrigeration, air-conditioning units, deck wash pumps, etc...

\$65.00
plus basic system winterization

Winterize Head and Holding Tank

We check to make sure the holding tank is pumped out. If it is in need of a pump out we will have it pumped out (see below for charges). Anti-freeze is pumped through the intake-protecting both sides of the head pump, your hoses and your holding tank.

\$65.00
plus materials

Holding Tank Pump Out

\$95.00



Other Services

Crowley's is a full service yard. We take pride in our ability to offer services that set us apart from other boat yards. Below are some often requested fall services. If you need anything else, just call us. If you would like to order any of the following work, just check the appropriate box on your *Fall Service Form* or contact Customer Service.

Boat Delivery Service

We offer turn-key deliveries between Chicago's Harbors and Crowley's Yacht Yard. Our skippers will call and customize this service to suit your needs. Delivery is within 10 days of the last day you specify you're going to use your boat. Please allow for inclement weather. Pump out, de-rigging, and winter preparation services are also available. All boats we deliver must have Boat US Towing Insurance. If you do not already carry the insurance we will purchase a 1 year policy for you for an additional \$99. **Please note delivery pricing increases by 25% if not ordered before 10/1 with boat available for pick up before 10/14.**

East Chicago to 95th \$350
Hammond to 95th \$300
Jackson Park to 95th \$350
Burnham/31st Street to 95th \$400
Monroe/DuSable to 95th \$425
Diversey to 95th \$450
Belmont to 95th \$475
Montrose to 95th \$495
Harness removal \$25

Cushion Cleaning

Over the winter, the cushions will be removed, cleaned, sanitized, deodorized, bagged, and returned to the boat.

from \$45.00 / per cushion

Jayne Parker Wood Refinishing

Discriminating boaters in Chicago have known for years that Jayne Parker does the best bright work refinishing and maintenance in the area. For several years we have been coordinating work for a few special customers. This year we have expanded the concept and you will be able to contract for wood refinishing by Jayne Parker just by checking the box on your fall form.

Call for quote

Sailboat Steering System Tune Up

Our team climbs down in the bilge and takes the time to carefully inspect this critical and often overlooked system. They visually inspect, lubricate and adjust your steering system, cables, chains and sheaves. If repairs are necessary, they are estimated for your review.

**\$165.00 per hour
plus parts**

Cradle Service

Crowley's builds the finest quality custom cradles available. We use heavy gauge steel and premium screw jacks. Every cradle is custom designed to fit your boat correctly. Crowley's can also repair your old cradle should it need it. Contact Customer Service to discuss your options.

Remove Liferaft, MOM, and Safety Equipment for Service

Call us and let us know what gear you want serviced and we will remove it from the boat, pack it for shipping, ship it to the appropriate facility and put it back on your boat. Installed fire suppression systems will be serviced by an outside vendor. **Service and shipping charges billed separately.**

Free

Masts and Rigging

Full Service Mast Unstepping

(Included with indoor storage.) We disconnect and store the boom and vang on deck, mark and disconnect electric and electronic connections, secure running rigging to the mast, de-tape and prepare the turnbuckles, disconnect deck tie-down straps, unstep the mast, break it down and store it on one of our indoor mast racks.

**\$20.00 per boat foot
+\$20.00 materials**

Owner Prepared Mast Unstepping

You prep the mast using the [Owner Prepared Unstepping Checklist](#), we unstep the mast and prepare it for storage as needed.

**\$19.00 per boat foot
+20.00 materials**

Mast Rack Storage

(Prices apply to boats storing outside)
Inside Heated mast rack storage is included with inside storage.

\$6.00 per boat foot

Sail and Canvas Removal

Our riggers will remove and fold the sails, covers, and canvas and place them in the cabin. Please leave sail bags readily accessible in the cabin.

Canvas \$75.00 per piece
Up to 34 ft LOA: \$160.00 per sail
35-40 ft LOA: \$185.00 per sail
41-45 ft LOA: \$240.00 per sail
46-50 ft LOA: \$295.00 per sail
51 and up \$325.00 per sail

Winch Servicing

Includes disassembly, cleaning, inspection, lubrication and re-assembly. (please note not available in spring)

**\$74 per speed
per winch plus parts**

Hydraulic Repairs and Service

Our trained technicians can service all brands of Cylinders, Pumps, Integrals and Vangs.

\$165.00 per hour

Sail Service

In addition to sail and canvas removal, Crowley's can arrange to get your sails and/or canvas to your preferred sail loft, and then deliver them back on board in the Spring. Loft services should be coordinated directly with your sail maker.

**\$165.00 per hour
+ loft fees**



Masts and Rigging



Mast & Rigging Inspections

We recommend a full, mast-down inspection at least once every 3 years, sooner if you race. Includes testing of lights, examination of standing and running rigging, mast and boom. Necessary repairs are estimated for your approval and a written report is provided. The visual, mast-up inspection is not as thorough as the full mast inspection.

Level C (Detailed mast down inspection) \$495

Level C+ (Detailed mast down inspection with dye penetrant testing \$950

Furling System Inspection and Service

This service is performed in spring and consists of Inspection and service of headsail furlers and in-mast furlers. Furling systems are inspected for wear and damage and any manufacturers recommended lubrication and service is performed. This service will be completed in spring and is weather dependent requires that you order sail rigging. These charges will be billed separately.

**\$165 per hour
Plus rig sail charge**



Other Rigging Services

We operate a full service rigging shop and some of the services we offer include: Wire and Rod standing rigging made on-site, running rigging, new furling systems, deck hardware service and installation. For these and any other rigging projects or repairs, please call us.

Indoor Storage Guidelines

Customers storing inside at Crowley's enjoy a friendly environment for the do-it-yourselfer. However, here are some rules for those storing indoors to protect your property, ensure a safe and clean atmosphere for your neighbors, their crew and Crowley's personnel.

Exhaust Fluids

Customers winterizing their own boats must capture any exhaust fluids (i.e., antifreeze and water) and dispose of them properly. Customers should winterize their engines using non-toxic antifreeze while the boat is still in the river. It is not necessary for us to start your engine in order to haul your boat.

Antifreeze

Only non-toxic antifreeze will be allowed for winterizing engines and water systems.

Sanding/Grinding/Painting

All sanding & grinding work must utilize dustless sanding systems and proper tenting. **Painting is not allowed indoors.** If you plan any sanding or grinding work on your boat you must contact the office and have your work plan pre-approved. ***If it is necessary for us to clean the buildings or other boats as a result of work you perform, we will bill you at standard yard rates.***

Water Hoses

Use of hoses is not allowed in the buildings. Customers may bucket wash their boats while inside. Boats will be moved out of the storage buildings at least two weeks prior to launch. It is recommended that detailed exterior cleaning take place once the boat is moved outside.

Unstepping

If you are storing your sailboat indoors, please choose either Full Service or Owner Prepared Mast Unstepping. If you request the *Owner Prepared Unstepping* option, please have your mast ready to unstep before you leave your boat after arriving at Crowley's docks. Ask for the Owner Prepared Checklist. Please remove sails (and canvas where necessary) prior to leaving your boat at Crowley's docks, or request our *Sail Removal service*. Additional labor necessary to prep the mast for unstepping will be billed at standard hourly rates. If you are removing your halyards from the mast, please use good quality messenger line (available from our Ship's Store) to prevent breakage and lost halyard messengers.

Mast Storage

Mast rack storage is provided at no charge for all boats storing inside. Mast down boats storing outdoors must order rack storage at \$6.00 per boat foot.

Waste Oil & Fuel

Waste oil can be left in a closed container at the recycle center located across from the dock shack. If disposing of fuel, stop in the office and we will help you make arrangements. Oil disposal is free of charge. A hazardous materials fee of \$5.00 per gallon will apply to waste gasoline, diesel and antifreeze.

Storage Solutions

Shrink Wrap

Shrink wrapping is a cost effective way to protect your boat from damaging UV- rays, prevent ice damage, and keep the interior drier. Crowley's prepares a custom cover for your boat by framing and securing shrink wrap film from the rub rail over the deck. Doors and vents are added for easy access and air circulation. PLEASE NOTE: Raw material prices have increased substantially and we have had to adjust our pricing to account for this.

Prices include all labor and materials for installation and removal in the Spring. Removal begins April 1st. Sails, dodgers and fly bridge canvas must be removed prior to shrink wrapping, or additional labor will be charged.

A flat rate up-charge of \$250.00 per boat will be charged for powerboats with flybridge.

Please note that Crowley's does not recommend shrink wrapping for dark hulled or painted boats.

| Boat Length | Sailboat — Mast Down | Powerboats and Mast Up Sailboats |
|--------------|----------------------|----------------------------------|
| 25' and less | \$608.62 | \$735.73 |
| 26 | \$638.15 | \$772.97 |
| 27 | \$667.68 | \$808.92 |
| 28 | \$704.92 | \$828.18 |
| 29 | \$740.87 | \$879.54 |
| 30 | \$771.68 | \$920.63 |
| 31 | \$811.49 | \$959.15 |
| 32 | \$846.16 | \$998.95 |
| 33 | \$884.68 | \$1,037.47 |
| 34 | \$928.33 | \$1,091.40 |
| 35 | \$964.28 | \$1,132.49 |
| 36 | \$1,009.22 | \$1,180.00 |
| 37 | \$1,075.99 | \$1,224.94 |
| 38 | \$1,142.76 | \$1,286.57 |
| 39 | \$1,224.94 | \$1,335.36 |
| 40 | \$1,307.11 | \$1,396.99 |
| 41 | \$1,371.31 | \$1,525.39 |
| 42 ft & up | 34.00/ft | 38.00/ft |

Plastic Cover

For boats storing indoors. Crowley's will cover your boat with a lightweight plastic. Perfect for keeping the dust off and minimizing the time necessary to clean her up

\$5.00 per boat foot

Canvas Cover Installation, Removal, Cleaning and Storage

Let us install your custom cover and remove it in the spring. We will carefully install your cover making sure to protect your boat as necessary. In the spring, we will remove the cover, mark all components for easy reinstallation, send it out for cleaning, and store it until you need it again in the fall. **Cleaning billed separately**

\$125.00 per hr

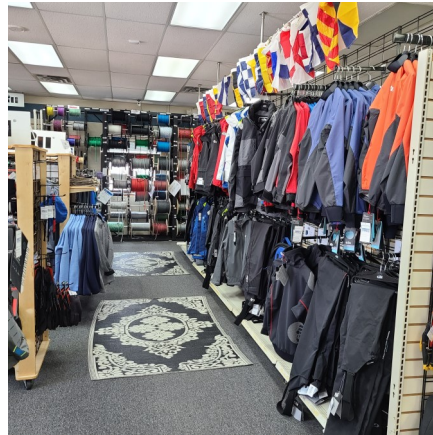
Storage Lockers

Crowley's offers the convenience of on site storage lockers. Customers can lease their own portable storage locker for all the gear they want to store off of their boat. These storage lockers are 5' x 8' x 72" tall and will hold loads of stuff. They are perfect for the customer who has limited storage space at home or who just does not want to schlep all their excess gear home. We will move the locker to your boat so you can load your gear right into the locker. The locker will be stored in a secure, unheated storage building and we will bring it back again for you in the spring. Customers will have access to the lockers during regular business hours throughout the year. Note: customers can not store flammable materials in storage lockers.

\$60 monthly
\$600 per year



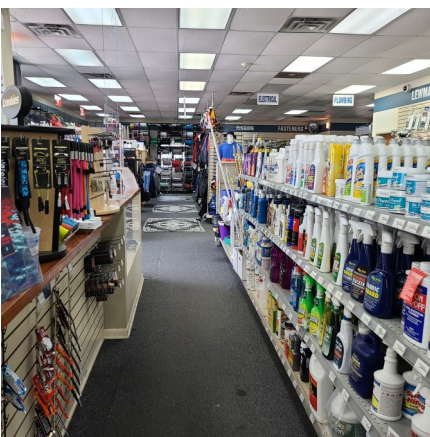
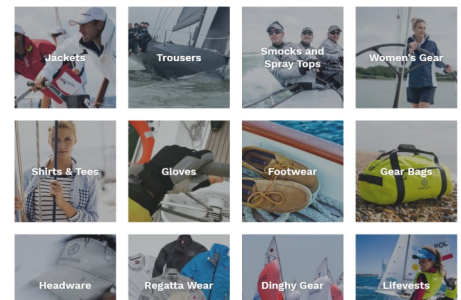
Ship's Store



Boater's Closet

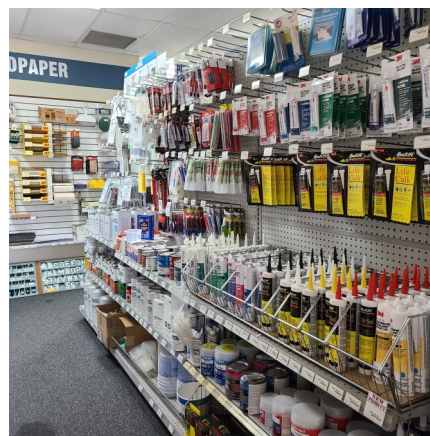
Crowley's operates an online store specializing in selling name brand sailing gear at great prices. We buy discontinued premium gear and offer it at steep discounts. www.boaterscloset.com

COLLECTIONS



Custom Embellishment

We also operate our own custom embellishment shop with commercial embroidery, dye sublimation, and vinyl graphic capabilities. Ask us about creating custom gear for your crew and guests or towels, blankets, or fender covers with your boat name. We can help you with the little touches that will help you make your boat special.



Paint & Composites

For over 40 years Crowley's has provided high quality laminate and paint work. We are equipped to perform everything from a gel coat touch up to a complex carbon structural repair. Our glass shop staff has over 100 years of combined experience in marine laminate repairs and maintenance. They regularly attend industry workshops to keep abreast of the latest developments in the field. Our 16,000 sf. state-of-the-art glass shop allows us to work year round to meet the needs of our customers.



Services

- Structural fiberglass & carbon fiber repairs
- Paint jobs
- Gelcoat repairs
- Molded nonskid repairs and matching
- Blister repair
- Racing bottoms and keel fairing
- In-house vinyl graphic design and fabrication

Certifications

- Awl Grip factory authorized paint facility
- Interlux Yacht Paint Center
- Pettit boat yard
- West Systems factory trained technicians



Ship's Store

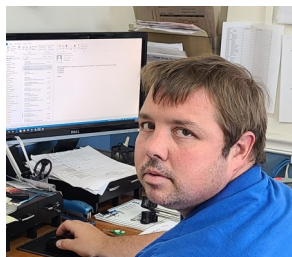
Crowley's Ship's Store

Our brick and mortar store is one of the most respected, well stocked and expertly staffed ship's chandleries in the country. If you don't see something on the shelf just ask, we have thousands of items in our warehouse. We get deliveries daily from the leading marine distributors so if we don't have it we can usually get it in a hurry. We carry over 20,000 parts for your boating needs. Everything from fuel filters to bottom paint, running lights to whipping twine, soft goods to electronics.



We are certified dealers of Harken, Spinlock, Helly Hansen, Musto, Gill, Ronstan, and just about every brand name you can think of. We carry a huge selection of Lewmar and engine parts and are one of only three Lewmar Master Parts Distributors in the country. We can also help you out with all of your winch and windless needs.

Store Staff



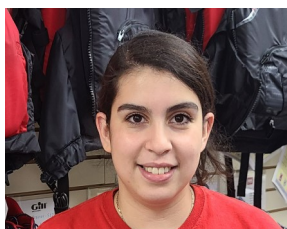
Nick Fugate (ext 351)
Purchasing
nfugate@crowleys.com
Nick knows where to find it. How to get the best price and how to get it here fast.



Alondra Preciado (ext 305)
Internet Sales Coordinator
apreciado@crowleys.com
Alondra takes care of website maintenance, order fulfillment and customer web inquires.



Mark Tellez (ext 353)
Shipping & Receiving
Mark keeps all the ingoing and outgoing shipments straight.



Jackie Navarro (ext 340)
Store Manager
jnavarro@crowleys.com
Jackie is the friendly face behind the counter and is always ready to help.



Ashly Hernandez (ext 342)
Store Associate
Ashly is always ready to help with a smile.



Angie Casteneda (ext 308)
Web Sales/Embellishment
Angie takes care of web order fulfillment and heads up the embellishment department.



Randy Johnson (ext 340)
Store Associate
Randy is an old surfer from Southern California who knows his way around a boat. Laid back, and efficient service is what you'll get from Randy



Serana Herrejon (ext 346)
Engine Parts
Serena runs the parts counter. She knows engine parts and a whole lot more.

Directory

ADMINISTRATOR



Grant Crowley
Owner
ext 310
gcrowley
@crowleys.com



Phil Pollard
Manager
ext 304
ppollard
@crowleys.com



Marciela Sabala
Human Resources
Ext 319
msabala
@crowleys.com

CUSTOMER SERVICE



John Ponsetto
Service Manager
Ext 332
jponsetto
@crowleys.com



Ken Lovecky
Ext 331
Ken
@crowleys.com



Sarah Sullivan
Ext 335
ssullivan
@crowleys.com

SERVICE



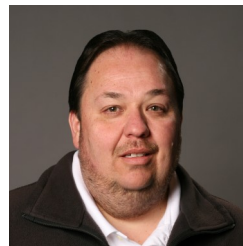
Kathy Lindt
Install Manager
ext 338
Klindt
@crowleys.com



Rick Haislip
Mechanical Manager
ext 312
rick
@crowleys.com



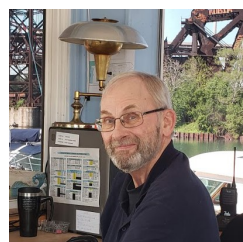
Dave Ramer
Rigging Manager
ext 339
daveramer
@crowleys.com



John Spies
Fiberglass Manager
ext 302
jspies
@crowleys.com



Theric Marian
Yard Foreman
ext 358
tmarion
@crowleys.com



Marko Lucht
Dockmaster
ext 358
mjl
@crowleys.com

ACCOUNTING



Carole Boulais
Accounting
Ext 337
cboulais
@crowleys.com



Mary Beilfeldt
Accounting
Ext 337
Mbeilfeldt
@crowleys.com

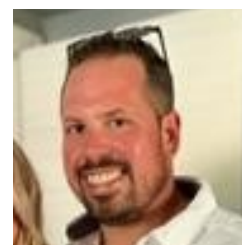


Lupe Spies
Accounts Payable
ext 351
lspies@
crowleys.com

MAINTENANCE



Fabian Bedoy
IT
ext 345
fbedoy
@crowleys.com



Robert Hartley
Physical Plant
ext 305
rhartley
@crowleys.com

NAUTICAL DONATIONS



Gary Leo
Director
(773) 672-2080
info@
nauticaldonations.org

SAILBOAT SALES



Bruce Rosenzweig
President
ext 369
brosenzweig@
sailboatsalesco.com



Erik Hillemeier
Yacht Broker
ext 368
erik@
sailboatsalesco.com

JAYNE PARKER



Jayne Parker
Owner-Jayne Parker
Yacht Refinishing
(773) 325-9271
Jaynep@prodigy.net



Nautical Donations, Inc. is a 501(c)3 charity that supports nautically related non-profits in the greater Chicago area through the sale of donated boats and marine equipment.

Donating to Nautical Donations is a very simple process and all donors can benefit from receiving a tax deduction for their contributions. In contrast to other charities, boat donors receive a premium deduction since we rarely sell our boats at auction. You can now also contribute to Nautical Donations, at no cost to yourself, with Amazon Smile.

Nautical Donations sells donated boats and equipment throughout the year at bargain basement prices. Click our BUY tab for links to our inventory of boats and equipment available for sale. If you enjoy wheeling and dealing, we also hold an ANNUAL FLEA MARKET in March!

You can also contribute to Chicago's nautical community and gain valuable skills in the process by volunteering your time.

Contact us at info@nauticaldonations.org or call us at (773)672-2080





Sailboat Sales Co. at Crowley's Yacht Yard Lakeside

Sailboat Sales continues to offer the experience and expertise that come with over forty years on continuous operation and management. Our selection of pre-owned brokerage boats is among the largest and most varied in the industry, so whether you want to race, cruise the Great Lakes (or the world!), or spend weekends on Chicago's beautiful lakefront, chances are that we have the boat that will fit your needs. Our working relationships with brokers nationwide and our affiliation with Yachtworld allow us to find the boat that fits your needs perfectly.

As a member of the Yacht Brokers Association of America since 1991, we comply with the high standards that organization has set, while providing expert and reliable counsel during all the steps that lead up to a boat purchase, and those that go beyond it. We work with you to find the right boat at the right price. We can also help you in selecting the right marine surveyor, access marine financing and marine insurance, arrange transport, and help obtain the best possible mooring.

Our close association with Crowley's allows us to suggest the most appropriate improvements for your boat. We can help you with upgrades such as marine electronics, boat maintenance, as well as the expert wood refinishing skills of Jayne Parker. Our working relationships with all of the local and regional sailmakers helps us to insure that your sail inventory will get the attention it deserves.

When the time comes and you're looking to sell your boat for something bigger, smaller or just take a break from boat ownership, we will work with you to establish a fair and marketable asking price, and to effect as speedy a sale as is realistic. We will handle all of the inquires from prospects; give you feedback from showings to prospects; handle all aspects of negotiations; consult with you and advise on how to best respond to written offers for your boat.

We invite you to come visit our boat yard and see all we have to offer. We look forward to many more years of serving the needs of the Chicago area sailing community.

Sincerely,

Bruce Rosenzweig



Erik Hillenmeyer



Jessica Caliguiri



2024 FALL SERVICE FORM

Customer Information

Boat Name: _____

Owner Name: _____

Boat Make: _____

Boat Combo: _____

Scheduling Reservation

Please return this form at least 2 weeks prior to your requested arrival date. See the 2024 Fall Service & Pricing Guide for service details.

I will arrive on: _____ (date)

at: _____ (time)

No Winterizing

- I will be completing all winterizing myself. No winterizing work will be done by CYC

Engine Winterizing

- Full Service winterization with oil, oil filter, and fuel filter change
Winterize engine only
Change oil and oil filter only
Change fuel filters only
Engine and Drivetrain Inspection
Change Impeller
Battery Service
Repack stuffing boxes
Outboard Motor Service
Outdrive Service
Saildrive Service
Coolant Flush
Transmission Service
Transmission Service
Service Prop
Replace Anodes

Winterize Water Systems

- Winterize water systems
Winterize head & holding tank
Pump out holding tank

Other Work/Notes: _____

Owner approval

X _____ (date) _____

Other Services

- Full service delivery: Schedule after ___/___
Cushion cleaning
Call me about teak refinishing
Sailboat steering system tune up
Cradle Service
Remove Safety Gear for Service

Masts & Rigging

- Full service mast unstep
Owner prep mast unstep
Mast Rack Storage (boats storing outdoors)
Remove Sails
Remove Canvas
Winch Servicing
Hydraulic Repairs
Sail service (send to sail maker)
UK
North
Quantum
Furling System Inspection
Mast and Rigging Inspection
Level C (detailed mast down inspection)
Level C+ (detailed with dye testing)

Shrink Wrapping & Plastic Cover

- Shrink wrap boat
Cover boat with lightweight plastic (indoor only)