

# 2025 Fall Service and Pricing Guide

**CROWLEY'S**  
YACHT YARD  
LAKE SIDE



# Contents

<b>Storage Tips</b>	<b>3</b>	<b>Other Services</b>	<b>9</b>
Repair List		Boat Delivery Service	
Mechanical Repairs		Cushion Cleaning	
Cushions		Jayne Parker Wood Refinishing	
Sails & Canvas		Steering System Tune Up	
Dinghy Storage		Cradle Service	
Water Tanks & Fuel Conditioners		Remove Gear for Service	
Halyards & Running Rigging			
Cradle Check			
<b>Scheduling Information</b>	<b>4</b>	<b>Masts &amp; Rigging</b>	<b>10</b>
Schedule Your Arrival		Full Service Mast Unstepping	
Before Leaving the Harbor		Owner Prepared Mast Unstepping	
Calumet River Bridge Openings		Mast Rack Storage	
Docking Instructions		Sail, Canvas & Rigging Removal	
Metra Shuttle		Winch Service	
		Hydraulic Repairs and Service	
		Sail Service	
		Lifeline Inspections	
<b>Check-in &amp; Work Orders</b>	<b>5</b>	<b>Masts &amp; Rigging</b>	<b>11</b>
Locks, Keys & Combinations		Mast Inspections	
Check-in		Furling Service and Inspection	
Equipment Left on Board		Other Rigging Services	
Estimates—Service Requests			
Yard Access			
Directions			
<b>Engine Systems Winterization</b>	<b>6</b>	<b>Indoor Storage Guidelines</b>	<b>12</b>
Engine Winterization		Exhaust Fluids	
Oil & Filters		Antifreeze	
Fuel Filters		Sanding/Grinding/Painting	
Engine & Drivetrain Inspection		Water Hoses	
Impellers		Unstepping	
Batteries		Mast Storage	
		Waste Oil & Fuel	
<b>Additional Engine Services</b>	<b>7</b>	<b>Storage Solutions</b>	<b>13</b>
Stuffing Boxes		Shrink Wrap	
Outboard Storage		Plastic Covers	
Saildrive Service		Cover Installation	
Outdrive Service		Storage Lockers	
Internal Coolant Flush			
Transmission Service			
Prop Service			
Replace Anodes			
<b>Water Systems Winterization</b>	<b>8</b>	<b>CYY Directory</b>	<b>14</b>
Water Systems		<b>Ship's Store</b>	<b>15/16</b>
Winterize Head and Holding Tank		<b>Nautical Donations</b>	<b>17</b>
Pump Out Holding Tank		<b>Sailboat Sales</b>	<b>18</b>
		<b>Fall 2025 Service Form</b>	<b>19</b>

# Storage Tips

The end of summer is the best time to start planning your 2026 boating season. The best time to get ready for next spring is now -while your boat's needs are fresh in your mind. Your final sail is a great time to take note of routine maintenance and upgrades. Here are a few tips to help you when you put the boat away for the season.

## Repair List

Start your repair and upgrade list during the last few outings and on your return to Crowley's. Crowley's is open all winter and prepared to do the work you need. Many projects can be done in the fall and over the winter.

## Mechanical Repairs

If you have a repair that you think may require a sea trial or running your boat in the water, please contact us before you arrive at the yard so we can make arrangements to perform the necessary tests prior to haul out.

## Cushions

Like sails and canvas, all cushions should be removed from the boat. If you don't have storage space, consider taking at least some of the small cushions home. Flip up the remaining cushions to allow air to circulate. See page 9 for *Crowley's Cushion Cleaning Service* & page 13 for *Storage Locker Rentals*.

## Sails and Canvas

Fold and bag all sails and canvas. Store in a dry location off the boat. Remove all furling headsails within one week of arrival. See page 10 for *Crowley's Sail Service Program* & page 13 for *Storage Locker Rentals*.

## Dinghy Storage

You may keep your dinghy at Crowley's over the winter. Make sure your boat name is clearly marked on the dinghy. See the dock master for instructions on where to put it. **Remove oars, cushions and other loose items** before you leave your dinghy with the dock master.

## Water, Fuel and Waste Tanks

Drain water tanks. Add fuel conditioner on your inbound cruise and pump out your holding tank before you leave the harbor.

## Halyards and Running Rigging

Secure your halyards away from the mast to avoid chafing. Better yet, remove running rigging and replace halyards with messenger lines. Store these lines in a dry place out of direct sunlight.

## Cradle Check

Take some time to come down to the yard and inspect your cradle. Make sure that it is in good condition and make or order any necessary repairs. Call Customer Service to order cradle repairs or if you have any questions.



# Scheduling Information

## ***Scheduling***

Crowley's lakeside location allows us a great deal of scheduling flexibility. However, we still need you to schedule your arrival in advance. **All boats must complete the online *Fall Service Form* -- even if you do all the winterization yourself.** Please schedule your inbound date at least **2 weeks prior** to your arrival. Call Customer Service one week prior to confirm your arrival date. **Boats arriving unscheduled will be assessed a \$250 unscheduled arrival fee.**



## ***Before Leaving the Harbor***

1. Pump out your holding tank.
2. Add fuel conditioner to your fuel tanks.
3. Drain all water tanks and your water heater.
4. Make a list of all those things you would like to get done this winter.
5. Notify your Harbor Master of your departure.

## ***Calumet Bridge Openings***

The 92nd Street/Ewing Avenue and 95th Street bridges open on demand. They are manned 24 hours a day, 7 days a week. Boaters requiring a bridge lift should hail the 92nd Street/Ewing Avenue Bridge tender on **VHF Channel 16** as they near the bridge (within 100 yards). Identify yourself, give the bridge tender your boat name, whether you are traveling inbound or outbound and your destination — **CROWLEY'S** and request a bridge lift. Be sure to give commercial traffic a wide berth. Also, if you see other mast up vessels nearby, try to transit the bridges together. Crowley's will also be monitoring Channel 16.

## ***Docking Instructions***

Crowley's Yacht Yard South Docks and hauling facilities are on the south side of 95th Street. Most boats will be hauled there. You must continue past the 95th Street Bridge to reach our South Docks. Some boats will be hauled at our North Docks. If we are going to haul your boat at our North Docks, we will let you know during the confirmation process. Please secure your boat **port side to**, with **three fenders** and **four dock lines** (bow, stern and two spring lines).

## ***Metra Shuttle***

Metra operates a commuter train that originates in Grant Park and has a stop just 3 blocks from Crowley's Lakeside. Info on the service can be found on the web at <http://metrarail.com>. Crowley's will be happy to shuttle riders to and from the 93rd Street/South Chicago Station. To get a ride to the station, just stop in the office and ask. To be picked up at the 93rd Street/South Chicago Station, give us a call when you get there and we will send a van to pick you up. See page 14 for a schedule and more information.



# Check-in and Work Orders

## ***Locks, Keys and Combinations***

We ask that you use combination locks on the main hatch and ladder. Ignition keys should be on a floating ring, left at the navigation station or in the galley sink. If your main hatch requires a key, we would like **only** that key, left with the dock master or with Customer Service. Leave your battery switches in the off position.

## ***Check In***

Be sure to check in with the Dock Master upon arrival. Please verify all your contact information and leave keys and/or your combination and re-view your winterization work orders and other requests for service.

## ***Equipment Left on Board***

Removing all of the equipment is the best way to store your boat but not always the most practical. Equipment left on board should be cleaned, dried and neatly stowed, leaving room for service crews to access compartments. (see page 13 for Storage Locker Rentals)

## ***Directions***

See our website for detailed directions and maps to Crowley's Yacht Yard Lakeside facility.

## ***Estimates - Service Requests -***

### ***Fall Winterization Orders***

Please return all paperwork promptly. If you are unsure about something, just complete all the sections you are sure of, and mark the rest with a question mark. We'll be happy to call you to clarify.

## ***Yard Access***

During our peak hauling season it will be necessary for us to limit vehicle traffic in our primary work areas. Please do not park in the Travel Lift staging area or in the mast unstepping area. Signs will be posted delineating these spaces.

## ***Hours***

Customers are allowed access to their boats seven days a week throughout the year. For current office, Ship's Store and repair shop hours please consult the website.

## ***Outside Contractors***

Crowley's allows you to utilize outside contractors. Outside contractors are defined as anybody you pay to work on your boat. They must register with the office, provide proof of adequate insurance follow all yard and environmental rules and pay a \$100 per day daily access fee.



# Engine Systems Winterization

Crowley's winterization and fall maintenance program is designed to fully protect your engines from freeze damage and provide basic maintenance. During winterizing our mechanics inspect your engines and will recommend necessary additional maintenance and upgrades. Annual inspections help to keep your engines running trouble free. We recommend oil, oil filters and fuel filters be changed during winterization.

***Prices listed are for labor only. Filters, oil, anti-freeze etc., are additional.***

## ***Full Service Winterization with Oil, Oil Filter, Fuel Filter Change and Drivetrain Inspection.***

This is the premium service for customers that want to be assured that their engine is fully protected from the harsh Chicago winters. Your boat will be hooked up to our specialized winterizing vehicles and -100 degree non-toxic antifreeze is run through your cooling system. Our mechanics run your engine and inspect it during this process. Manufacturers recommendations for scheduled service are consulted and oil, oil filters and up to two fuel filters per engine are changed. Fuel stabilizer is added to the fuel tank and gas engines are fogged (top cylinders are lubricated). Our Technicians will also perform a detailed inspection of your drive train and engine. You will receive a report with their findings to help you stay on top of engine maintenance.

***Sailboats & Generators: Gas & Diesel \$550.00***

***Powerboats: Gasoline \$585.00***

***Powerboats: Diesel \$740.00***

***Per Engine + Parts***

## ***Engine Winterization Only***

Same as above without the oil, oil filter & fuel filter change or drivetrain inspection.

***Sailboats & Generators: Gas & Diesel \$250.00***

***Powerboats: Gasoline \$260.00***

***Powerboats: Diesel \$395.00***

***Per Engine + Parts***

## ***Oil and Oil Filter Change Only***

For customers that like to winterize their own engines but would rather leave the oil & filters to us.

***Sailboats & Generators: Gas & Diesel \$235.00***

***Powerboats: Gasoline \$290.00***

***Powerboats: Diesel \$450.00***

***Per Engine + Parts***

## ***Fuel Filter Change Only***

***First filter per engine \$72.00***

***Each additional filter \$33.00***

## ***Engine & Drivetrain Inspection***

Included with a full service winterization. Have our expert technicians visually inspect your engine drive train for damage, wear and corrosion. This service is included with full service engine winterizing. We will look at your propellers, shaft, struts, cutlass bearings, shafts & propeller zincs. Included is a visual inspection of your engine where all belts, hoses, electrical connections and fluid levels are inspected. If service is indicated we will send you a detailed estimate for the recommended maintenance.

***\$165.00***

## ***Change Impeller***

We recommend that impellers be changed every two years. If you are not sure when you had it done—it is time.

***\$165.00 hr  
Plus parts***

## ***Battery Service***

Most batteries will be removed from the boat. Larger batteries may be serviced on the boat at our discretion. We clean and inspect them at removal. Over the winter we will periodically charge them. In the spring the batteries are inspected, and load tested again. If a battery fails load testing you will be notified about replacement options. Any battery passing the load test will be reinstalled.

***Group 24-31 \$65.00 per battery***

***4D-8D \$85.00 per battery***

# Additional Engine Services

## ***Repack Stuffing Boxes***

Most drive shafts and some rudder shafts have a packing material that allows them to turn freely while keeping water from entering your boat. Periodically, this packing material must be replaced. If you have not had your stuffing box or rudder ports serviced recently it is a good idea to have it done while your boat is out of the water. **Note: Requires an engine start. Performed in spring and billed separately**

***\$165.00 per engine  
Plus parts***

## ***Outboard Motor Service with a Spring Start***

For 10 hp and smaller engines. Lower unit oil is changed. The engine is test run in the spring. Tune-ups and other services can be provided at an additional charge. Larger engines will be serviced on a time and materials basis.

***\$395.00  
Plus parts***

## ***Outdrive Service***

Crowley's mechanical technicians will remove your stern drive, inspect and service pivot points, u-joints, and gimbal bearings, inspect all bellows, shift cable, intake water hose, zincs, casing, coupler, propeller and prop shaft, making recommendations for any necessary repairs. The drive is then reassembled, all grease fittings are serviced, proper engine alignment and the coupler are also checked. In the spring we will start the engine, perform a 12 point check and check the drive for proper operation. **Note: Requires an engine start and sea test. Performed in spring and billed separately**

***\$395.00 per drive  
Plus parts***

## ***Saildrive Service***

We drain flush and refill your saildrive with the manufacturers recommended lubricant. If present filters are changed and the casing and zincs are inspected for corrosion. We'll call you with recommendations if additional repairs are indicated. **Note: Requires an engine start. Performed in spring and billed separately**

***\$195.00  
Plus parts***

## ***Internal Coolant Flush and Replacement***

Engine manufacturers recommend that the internal cooling system on your marine engine be flushed and the coolant replaced every 3-5 years. Our mechanics will drain your internal cooling system and flush out the accumulated rust and sediment. We visually inspect the hoses, heat exchanger, water pump and all components of your cooling system. Once flushed, we replace the coolant with premium coolant per the manufacturers recommendation. **Note: Requires an engine start. Performed in spring and billed separately**

***\$295.00 per engine  
Plus parts***

## ***Transmission Service***

We drain, flush and refill your transmission with the manufacturers recommended lubricant. If present, filters are changed. **Note: Requires an engine start. Performed in spring and billed separately**

***\$175.00 transmissions w/o filter  
\$245.00 transmissions with Filter  
Plus parts***

## ***Service Prop***

We will disassemble the prop, inspect it for unusual wear, grease, reassemble and replace the anode if needed. We will give you a call if additional repairs are indicated.

***\$285.00  
Plus parts***

## ***Replace Anodes***

Sacrificial anodes are designed to protect metal components on your boat that are susceptible to galvanic corrosion. They can be located on your propeller shaft, hull, propeller, saildrive, outdrive or trim tabs. They require regular replacement. We will inspect all of your external anodes and replace the ones that have reached the end of their usable lives.

***\$85.00 per Anode  
Plus parts***



# Water Systems Winterization

## Winterization Preparation

Crowley's winterizes your water system by filling the system with non-toxic propylene glycol. This environmentally safe anti-freeze offers protection down to negative 50 degrees Fahrenheit by turning to slush but not expanding, protecting your pumps, tanks and water systems from bursting.

Before you leave the harbor be sure to:

1. Pump out the holding tank
2. Drain the water tanks

## Water Systems Winterization

Pricing is based on the size of your system. List any special instructions or notes on your order form. Prices listed are for labor only. Anti-freeze additional.

### Winterization of the Basic System (1 tank, 1 pump, 1 faucet)

Our technicians will check to make sure your tank is drained (and drain it if necessary. Charges apply.) We will hook our equipment up to your water system and pump non-toxic, water system antifreeze through the pump and faucet.

**\$165.00**  
*plus materials*

## Minor Additional Components

Including sink pumps, bilge pumps, bilge, faucets, showers, and additional tanks.

**\$15.00/ea**  
*plus basic system winterization*

## Major Additional Systems

Including water heaters, ice makers, refrigeration, air-conditioning units, deck wash pumps, etc...

**\$65.00**  
*plus basic system winterization*

## Winterize Head and Holding Tank

We check to make sure the holding tank is pumped out. If it is in need of a pump out we will have it pumped out (see below for charges). Anti-freeze is pumped through the intake-protecting both sides of the head pump, your hoses and your holding tank.

**\$65.00**  
*plus materials*

## Holding Tank Pump Out

**\$95.00**





# Other Services

Crowley's is a full service yard. We take pride in our ability to offer services that set us apart from other boat yards. Below are some often requested fall services. If you need anything else, just call us. If you would like to order any of the following work, just check the appropriate box on your *Fall Service Form* or contact Customer Service.

## Boat Delivery Service

We offer turn-key deliveries between Chicago's Harbors and Crowley's Yacht Yard. Our skippers will call and customize this service to suit your needs. Delivery is within 10 days of the last day you specify you're going to use your boat. Please allow for inclement weather. Pump out, de-rigging, and winter preparation services are also available. All boats we deliver must have Boat US Towing Insurance. If you do not already carry the insurance we will purchase a 1 year policy for you for an additional \$99. **Please note delivery pricing increases by 25% if not ordered before 10/1 with boat available for pick up before 10/14.**

**East Chicago to 95th \$350**  
**Hammond to 95th \$300**  
**Jackson Park to 95th \$350**  
**Burnham/31st Street to 95th \$400**  
**Monroe/DuSable to 95th \$425**  
**Diversey to 95th \$450**  
**Belmont to 95th \$475**  
**Montrose to 95th \$495**  
**Harness removal \$25**

## Cushion Cleaning

Over the winter, the cushions will be removed, cleaned, sanitized, deodorized, bagged, and returned to the boat.

**from \$45.00 / per cushion**

## Jayne Parker Wood Refinishing

Discriminating boaters in Chicago have known for years that Jayne Parker does the best bright work refinishing and maintenance in the area. For several years we have been coordinating work for a few special customers. This year we have expanded the concept and you will be able to contract for wood refinishing by Jayne Parker just by checking the box on your fall form.

**Call for quote**

## Sailboat Steering System Tune Up

Our team carefully inspects this critical and often overlooked system. They visually inspect, lubricate and adjust your steering system, cables, chains and sheaves. If repairs are necessary, they are estimated for your review.

**\$165.00 per hour  
plus parts**

## Cradle Service

Crowley's builds the finest quality custom cradles available. We use heavy gauge steel and premium screw jacks. Every cradle is custom designed to fit your boat correctly. Crowley's can also repair your old cradle should it need it. Contact Customer Service to discuss your options.

## Remove Liferaft, MOM, and Safety Equipment for Service

Call us and let us know what gear you want serviced and we will remove it from the boat, pack it for shipping, ship it to the appropriate facility and put it back on your boat. Installed fire suppression systems will be serviced by an outside vendor. **Service and shipping charges billed separately.**

**Free**

# Masts and Rigging

## Full Service Mast Unstepping

(Included with indoor storage.) We disconnect and store the boom and vang on deck, mark and disconnect electric and electronic connections, secure running rigging to the mast, de-tape and prepare the turnbuckles, disconnect deck tie-down straps, unstep the mast, break it down and store it on one of our indoor mast racks.

**\$20.00 per boat foot  
+\$20.00 materials**

## Owner Prepared Mast Unstepping

You prep the mast using the [Owner Prepared Unstepping Checklist](#), we unstep the mast and prepare it for storage as needed.

**\$19.00 per boat foot  
+20.00 materials**

## Mast Rack Storage

(Prices apply to boats storing outside)  
Inside Heated mast rack storage is included with inside storage.

**\$6.00 per boat foot**

## Sail and Canvas Removal

Our riggers will remove and fold the sails, covers, and canvas and place them in the cabin. Please leave sail bags readily accessible in the cabin.

**Canvas \$75.00 per piece**  
**Up to 34 ft LOA: \$160.00 per sail**  
**35-40 ft LOA: \$185.00 per sail**  
**41-45 ft LOA: \$240.00 per sail**  
**46-50 ft LOA: \$295.00 per sail**  
**51 and up \$325.00 per sail**

## Winch Servicing

Includes disassembly, cleaning, inspection, lubrication and re-assembly. (please note not available in spring)

**\$74 per speed  
per winch plus parts**

## Hydraulic Repairs and Service

Our trained technicians can service all brands of Cylinders, Pumps, Integrals and Vangs.

**\$165.00 per hour**

## Sail Service

In addition to sail and canvas removal, Crowley's can arrange to get your sails and/or canvas to your preferred sail loft, and then deliver them back on board in the Spring. Loft services should be coordinated directly with your sail maker.

**\$165.00 per hour  
+ loft fees**



# Masts and Rigging



## ***Mast & Rigging Inspections***

We recommend a full, mast-down inspection at least once every 3 years, sooner if you race. Includes testing of lights, examination of standing and running rigging, mast and boom. Necessary repairs are estimated for your approval and a written report is provided. The visual, mast-up inspection is not as thorough as the full mast inspection.

***Level C (Detailed mast down inspection ) \$495***

***Level C+ (Detailed mast down inspection with dye penetrant testing \$950***

## ***Furling System Inspection and Service***

This service is performed in spring and consists of Inspection and service of headsail furlers and in-mast furlers. Furling systems are inspected for wear and damage and any manufacturers recommended lubrication and service is performed. This service will be completed in spring and is weather dependent requires that you order sail rigging. These charges will be billed separately.

***\$165 per hour  
Plus rig sail charge***

## ***Other Rigging Services***

We operate a full service rigging shop and some of the services we offer include: Wire and Rod standing rigging made on-site, running rigging, new furling systems, deck hardware service and installation. For these and any other rigging projects or repairs, please call us.





# Indoor Storage Guidelines

Customers storing inside at Crowley's enjoy a friendly environment for the do-it-yourselfer. However, here are some rules for those storing indoors to protect your property, ensure a safe and clean atmosphere for your neighbors, their crew and Crowley's personnel.

## ***Exhaust Fluids***

Customers winterizing their own boats must capture any exhaust fluids (i.e., antifreeze and water) and dispose of them properly. Customers should winterize their engines using non-toxic antifreeze while the boat is still in the river. It is not necessary for us to start your engine in order to haul your boat.

## ***Antifreeze***

Only non-toxic antifreeze will be allowed for winterizing engines and water systems.

## ***Sanding/Grinding/Painting***

All sanding & grinding work must utilize dustless sanding systems and proper tenting. **Painting is not allowed indoors.** If you plan any sanding or grinding work on your boat you must contact the office and have your work plan pre-approved. ***If it is necessary for us to clean the buildings or other boats as a result of work you perform, we will bill you at standard yard rates.***

## ***Water Hoses***

Use of hoses is not allowed in the buildings. Customers may bucket wash their boats while inside. Boats will be moved out of the storage buildings at least two weeks prior to launch. It is recommended that detailed exterior cleaning take place once the boat is moved outside.

## ***Unstepping***

If you are storing your sailboat indoors, please choose either Full Service or Owner Prepared Mast Unstepping. If you request the *Owner Prepared Unstepping* option, please have your mast ready to unstep before you leave your boat after arriving at Crowley's docks. Ask for the Owner Prepared Checklist. Please remove sails (and canvas where necessary) prior to leaving your boat at Crowley's docks, or request our *Sail Removal service*. Additional labor necessary to prep the mast for unstepping will be billed at standard hourly rates. If you are removing your halyards from the mast, please use good quality messenger line (available from our Ship's Store) to prevent breakage and lost halyard messengers.

## ***Mast Storage***

Mast rack storage is provided at no charge for all boats storing inside. Mast down boats storing outdoors must order rack storage at \$6.00 per boat foot.

## ***Waste Oil & Fuel***

Waste oil can be left in a closed container at the recycle center located across from the dock shack. If disposing of fuel, stop in the office and we will help you make arrangements. Oil disposal is free of charge. A hazardous materials fee of \$5.00 per gallon will apply to waste gasoline, diesel and antifreeze.



# Storage Solutions

## Shrink Wrap

Shrink wrapping is a cost effective way to protect your boat from damaging UV- rays, prevent ice damage, and keep the interior drier. Crowley's prepares a custom cover for your boat by framing and securing shrink wrap film from the rub rail over the deck. Doors and vents are added for easy access and air circulation. PLEASE NOTE: Raw material prices have increased substantially and we have had to adjust our pricing to account for this.

Prices include all labor and materials for installation and removal in the Spring. Removal begins April 1st. Sails, dodgers and fly bridge canvas must be removed prior to shrink wrapping, or additional labor will be charged.

A flat rate up-charge of \$250.00 per boat will be charged for powerboats with flybridge.

Please note that Crowley's does not recommend

## Plastic Cover

For boats storing indoors. Crowley's will cover your boat with a lightweight plastic. Perfect for keeping the dust off and minimizing the time

**\$5.00 per boat foot**

## Canvas Cover Installation, Removal, Cleaning and Storage

Let us install your custom cover and remove it in the spring. We will carefully install your cover making sure to protect your boat as necessary. In the spring, we will remove the cover, mark all components for easy reinstallation, send it out for cleaning, and store it until you need it again in the fall.

**Cleaning billed separately**

**\$125.00 per hr**

## Storage Lockers

Customers can lease their own portable storage locker for all the gear they want to store off of their boat. These storage lockers are 5' x 8' x 72" tall and will hold loads of stuff. We will move the locker to your boat so you can load your gear right into the locker. The locker will be stored in a secure, storage building and we will bring it back again for you in the spring. Customers will have access to the lockers during regular business hours throughout the year. Note: customers can not store flammable materials in storage lockers.

Boat Length	Sailboat — Mast Down	Powerboats and Mast Up Sailboats
25' and less	\$608.00	\$736.00
26	\$639.00	\$773.00
27	\$668.00	\$809.00
28	\$705.00	\$828.00
29	\$741.00	\$880.00
30	\$772.00	\$921.00
31	\$812.00	\$959.00
32	\$847.00	\$999.00
33	\$885.00	\$1,037.00
34	\$929.00	\$1,091.00
35	\$965.00	\$1,132.00
36	\$1,010.00	\$1,180.00
37	\$1,076.00	\$1,225.00
38	\$1,143.00	\$1,287.00
39	\$1,225.00	\$1,335.00
40	\$1,308.00	\$1,397.00
41	\$1,372.00	\$1,525.00
42	\$1,428.00	\$1,596.00
43	\$1,462.00	\$1,634.00
44	\$1,496.00	\$1,672.00
45	\$1,530.00	\$1,710.00
46	\$1,564.00	\$1,748.00
47	\$1,598.00	\$1,786.00
48	\$1,632.00	\$1,824.00
49	\$1,666.00	\$1,862.00
50	\$1,700.00	\$1,900.00
51 & UP	\$34.00 LF	\$38.00 LF



**\$60 monthly**  
**\$600 per year**

# Directory

## ADMINISTRATOR



**Grant Crowley**  
Owner  
**ext 310**  
gcrowley  
@crowleys.com



**Phil Pollard**  
Manager  
**ext 304**  
ppollard  
@crowleys.com



**Marciela Sabala**  
Human Resources  
**Ext 319**  
msabala  
@crowleys.com

## ACCOUNTING

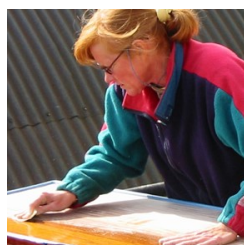


**Carole Boulais**  
Accounting  
**Ext 337**  
cboulais  
@crowleys.com



**Ashly Hernandez**  
Accounts Payable  
**ext 342**

## Jayne Parker

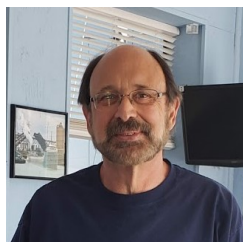


**Jayne Parker**  
Owner-Jayne Parker  
Yacht Refinishing  
(773) 325-9271  
Jaynep@prodigy.net

## CUSTOMER SERVICE



**John Ponsetto**  
Service Manager  
**Ext 332**  
Jponsetto  
@crowleys.com



**Ken Lovecky**  
**Ext 331**  
Ken  
@crowleys.com



**Sarah Sullivan**  
**Ext 335**  
ssullivan  
@crowleys.com



**JoAnn Knoll**  
**Ext 334**  
Jknoll  
@crowleys.com

## MAINTENANCE



**Fabian Bedoy**  
IT  
**ext 345**  
fbedoy  
@crowleys.com



**Robert Hartley**  
Physical Plant  
**ext 305**  
rhartley  
@crowleys.com

## SERVICE



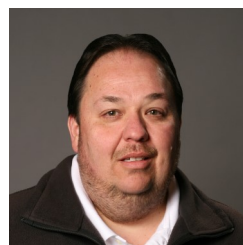
**Kathy Lindt**  
Install Manager  
**ext 338**  
Klindt  
@crowleys.com



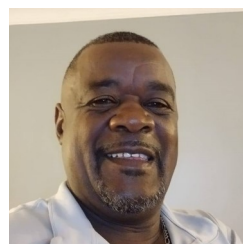
**Rick Haislip**  
Mechanical Manager  
**ext 312**  
rick  
@crowleys.com



**Dave Ramer**  
Rigging Manager  
**ext 339**  
daveramer  
@crowleys.com



**John Spies**  
Fiberglass Manager  
**ext 302**  
jspies  
@crowleys.com



**Theric Marian**  
Yard Foreman  
**ext 358**  
tmarion  
@crowleys.com

## NAUTICAL DONATIONS



**Leo**  
Director  
**(773) 672-2080**  
info@  
nauticaldonations.org

Gary



# Ship's Store

## Crowley's Ship's Store

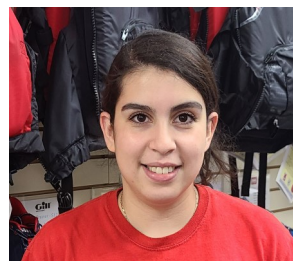
## Store Staff



Our brick and mortar store is one of the most respected, well stocked and expertly staffed ship's chandleries in the country. If you don't see something on the shelf just ask, we have thousands of items in our warehouse. We get deliveries daily from the leading marine distributors so if we don't have it we can usually get it in a hurry. We carry over 20,000 parts for your boating needs. Everything from fuel filters to bottom paint, running lights to whipping twine, soft goods to electronics. We are certified dealers of Harken, Spinlock, Helly Hansen, Musto, Gill, Ronstan, and just about every brand name you can think of. We carry a huge selection of Lewmar and engine parts and are one of only three Lewmar Master Parts Distributors in the country. We can also help you out with all of your winch and windless needs.



**Nick Fugate (ext 351)**  
**Purchasing**  
**nfugate@crowleys.com**  
 Nick knows where to find it. How to get the best price and how to get it here fast.



**Jackie Navarro (ext 340)**  
**Store Manager**  
**jnavarro@crowleys.com**  
 Jackie is the friendly face behind the counter and is always ready to help.



**Alondra Preciado (305)**  
**Internet Sales**  
**Apresiasi**  
**@crowleys.com**  
 Alondra takes care of website maintenance, order fulfillment and customer web inquiries.



**Randy Johnson (ext 340)**  
**Store Associate**  
 Randy is an old surfer from Southern California who knows his way around a boat.



**Serena Herrejon (346)**  
**Engine Parts**  
**Sherrejon**  
**@crowleys.com**  
 When it comes to engine parts Serena knows her stuff.

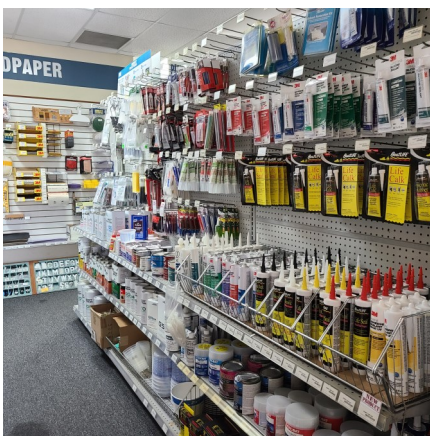
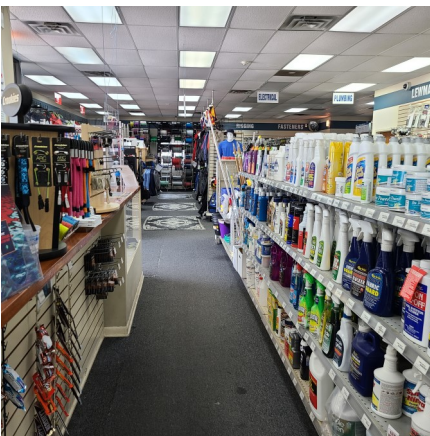
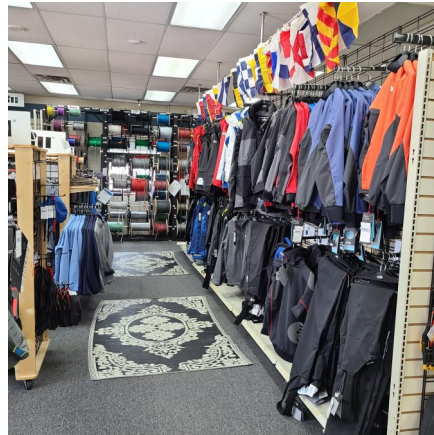


**Angie Casteneda (308)**  
**Web Sales/Embellishment**  
 Angie takes care of web order fulfillment and embellishment





# Ship's Store

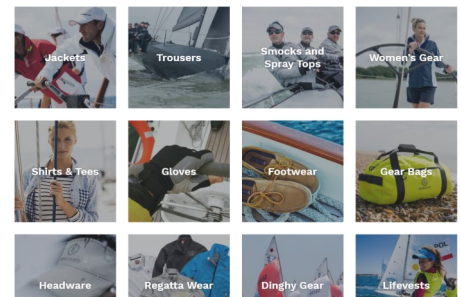


## Boater's Closet

Crowley's operates an online store specializing in selling name brand sailing gear at great prices. We buy discontinued premium gear and offer it at steep discounts.

**[www.boaterscloset.com](http://www.boaterscloset.com)**

COLLECTIONS



## Custom Embellishment

We also operate our own custom embellishment shop with commercial embroidery, dye sublimation, Heat transfer and custom vinyl graphics capabilities. Ask us about creating custom gear for your crew and guests or towels, blankets, or fender covers with your boat name. We can help you with the little touches that will help you make your boat







Nautical Donations, Inc. is a 501(c)3 charity that supports nautically related non-profits in the greater Chicago area through the sale of donated boats and marine equipment.

Donating to Nautical Donations is a very simple process and all donors can benefit from receiving a tax deduction for their contributions. In contrast to other charities, boat donors receive a premium deduction since we rarely sell our boats at auction. You can now also contribute to Nautical Donations, at no cost to yourself, with Amazon Smile.

Nautical Donations sells donated boats and equipment throughout the year at bargain basement prices. Click our BUY tab for links to our inventory of boats and equipment available for sale. If you enjoy wheeling and dealing, we also hold an ANNUAL FLEA MARKET in March!

You can also contribute to Chicago's nautical community and gain valuable skills in the process by volunteering your time.

Contact us at [info@nauticaldonations.org](mailto:info@nauticaldonations.org) or call us at (773)672-2080



**BOATS**



**EQUIPMENT**



**DONATE**



**VOLUNTEER**





## Sailboat Sales Co. at Crowley's Yacht Yard Lakeside

Sailboat Sales continues to offer the experience and expertise that come with over forty years on continuous operation and management. Our selection of pre-owned brokerage boats is among the largest and most varied in the industry, so whether you want to race, cruise the Great Lakes (or the world!), or spend weekends on Chicago's beautiful lakefront, chances are that we have the boat that will fit your needs. Our working relationships with brokers nationwide and our affiliation with Yachtworld allow us to find the boat that fits your needs perfectly.

As a member of the Yacht Brokers Association of America since 1991, we comply with the high standards that organization has set, while providing expert and reliable counsel during all the steps that lead up to a boat purchase, and those that go beyond it. We work with you to find the right boat at the right price. We can also help you in selecting the right marine surveyor, access marine financing and marine insurance, arrange transport, and help obtain the best possible mooring.

Our close association with Crowley's allows us to suggest the most appropriate improvements for your boat. We can help you with upgrades such as marine electronics, boat maintenance, as well as the expert wood refinishing skills of Jayne Parker. Our working relationships with all of the local and regional sailmakers helps us to insure that your sail inventory will get the attention it deserves.

When the time comes and you're looking to sell your boat for something bigger, smaller or just take a break from boat ownership, we will work with you to establish a fair and marketable asking price, and to effect as speedy a sale as is realistic. We will handle all of the inquiries from prospects; give you feedback from showings to prospects; handle all aspects of negotiations; consult with you and advise on how to best respond to written offers for your boat.

We invite you to come visit our boat yard and see all we have to offer. We look forward to many more years of serving the needs of the Chicago area sailing community.

Sincerely,

Bruce Rosenzweig



Erik Hillenmeyer



Jessica Caliguiri



## 2025 FALL SERVICE FORM

**Customer Information**

Boat Name: \_\_\_\_\_

Owner Name: \_\_\_\_\_

Boat Make: \_\_\_\_\_

Boat Combo: \_\_\_\_\_

**Scheduling Reservation**

Please return this form at least 2 weeks prior to your requested arrival date. See the **2025 Fall Service & Pricing Guide** for service details.

I will arrive on: \_\_\_\_\_ (date)

at: \_\_\_\_\_ (time)

**No Winterizing**

- ☐ I will be completing all winterizing myself.  
No winterizing work will be done by CY

**Engine Winterizing**

- ☐ Full Service winterization with oil, oil filter, and fuel filter change
- ☐ Winterize engine only
- ☐ Change oil and oil filter only
- ☐ Change fuel filters only
- ☐ Engine and Drivetrain Inspection
- ☐ Change Impeller
- ☐ Battery Service
- ☐ Repack stuffing boxes
- ☐ Outboard Motor Service
- ☐ Outdrive Service
- ☐ Saildrive Service
- ☐ Coolant Flush
- ☐ Transmission Service
- ☐ Transmission Service
- ☐ Service Prop
- ☐ Replace Anodes

**Winterize Water Systems**

- ☐ Winterize water systems
- ☐ Winterize head & holding tank
- ☐ Pump out holding tank

Other Work/Notes: \_\_\_\_\_

\_\_\_\_\_

\_\_\_\_\_

Owner approval

X \_\_\_\_\_ (date) \_\_\_\_\_

**Other Services**

- ☐ Full service delivery: Schedule after \_\_\_\_/\_\_\_\_
- ☐ Cushion cleaning
- ☐ Call me about teak refinishing
- ☐ Sailboat steering system tune up
- ☐ Cradle Service
- ☐ Remove Safety Gear for Service

**Masts & Rigging**

- ☐ Full service mast unstep
- ☐ Owner prep mast unstep
- ☐ Mast Rack Storage (boats storing outdoors)
- ☐ Remove Sails
- ☐ Remove Canvas
- ☐ Winch Servicing
- ☐ Hydraulic Repairs
- ☐ Sail service (send to sail maker)
- ☐ UK
- ☐ North
- ☐ Quantum
- ☐ Furling System Inspection
- ☐ Mast and Rigging Inspection
- ☐ Level C (detailed mast down inspection)
- ☐ Level C+ (detailed with dye testing)

**Shrink Wrapping & Plastic Cover**

- ☐ Shrink wrap boat
- ☐ Cover boat with lightweight plastic (indoor only)