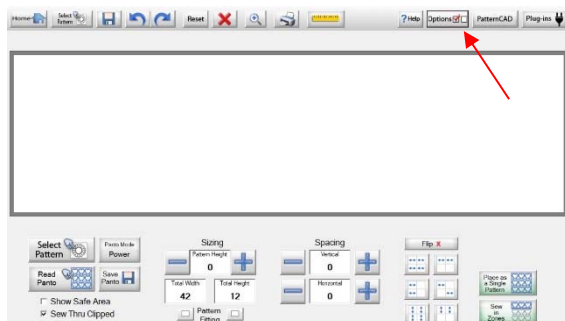
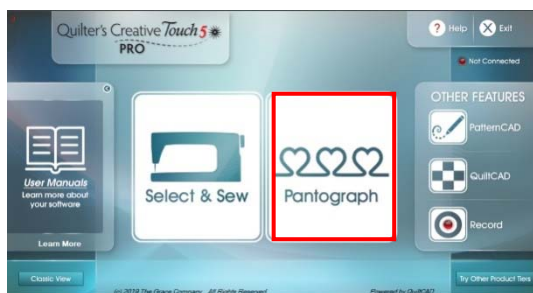


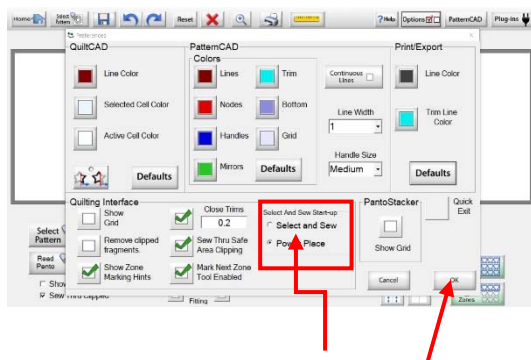
Quilter's Creative Touch 5 PRO

Block Lock in QCT5

How to use **Block Lock** – this is very useful tool when you have an odd shape that you need to set a design into. Important: you will have to make sure you are not in **Power Placement mode** - If you would like to change from **Power Place mode**, from the home screen, select **Pantograph**

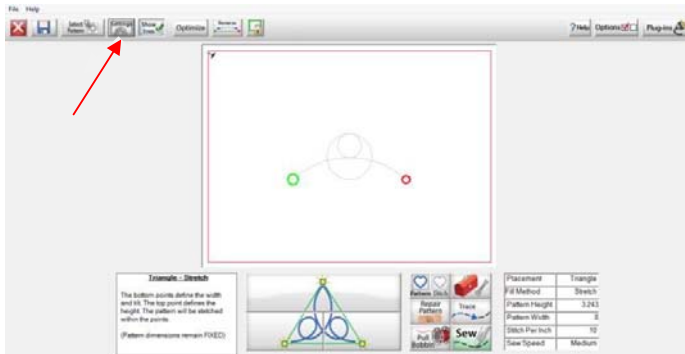


You will now be in the main screen for **PantoStacker**. From the tool bar at the top of your screen select the **Options** Icon – the options screen will now be displayed.



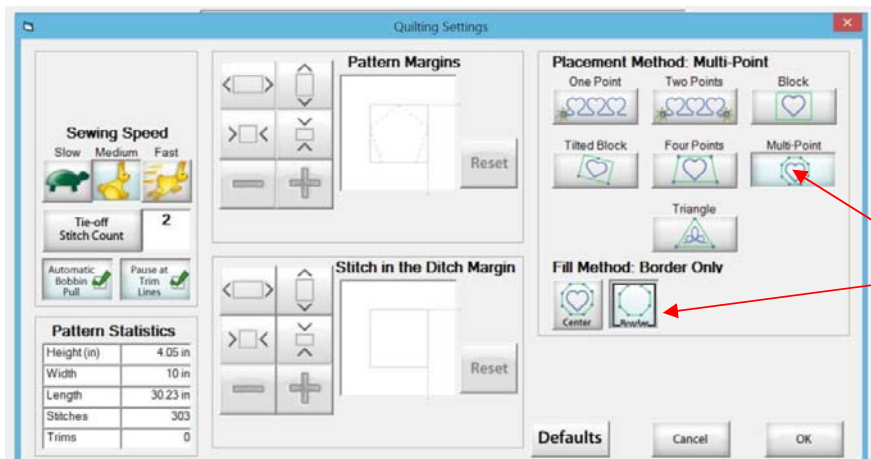
To exit **Power Place** mode activate the **Select and Sew** Icon. Tap **Ok** to exit screen

You will now have to go back to the home screen and select the [Select & Sew Mode](#) – then [Pattern – Triangles](#) – now select any design.

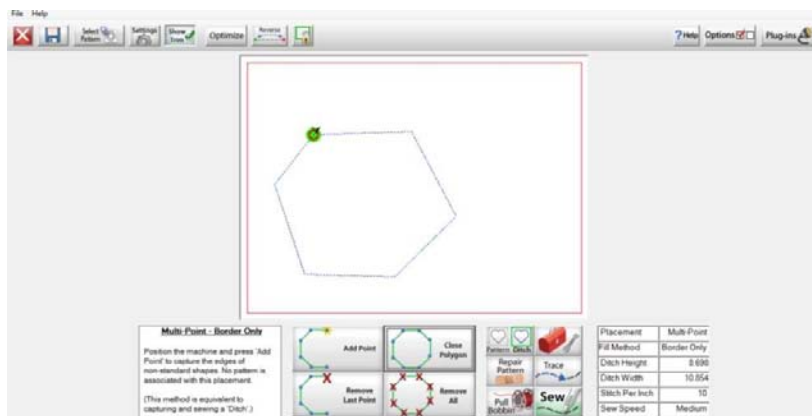


You now need to access the [Settings](#) menu at the top of our screen.

Once in the settings menu you need to select

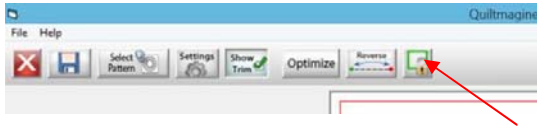


[Multi-Point](#) and [Border Fill](#) method. Notice the triangle design has disappeared from the screen but will come back later.

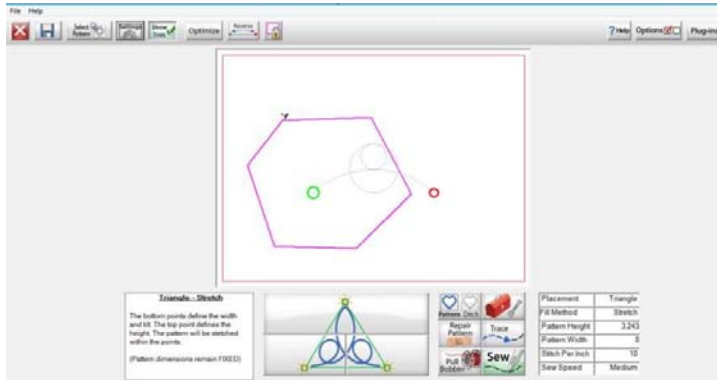


I have drawn a rather irregular hexagon, remember though, you will be tracing a shape on your quilt top which will be accurate. To trace a shape simply move the machine to the first point of your shape and select [Add Point](#) – now work your way around your shape adding points. You will need to select [Close Polygon](#) for your last point.

Now that you have your shape, Select the **Lock Block Icon**. It is found at the top of the screen.



You will notice that the shape is now highlighted **purple** – now go back to **Settings** at the top of your screen and select **Triangle**.



Now simply place your triangle inside the shape – find the centre of the shape and then use the side's to successfully place your triangles, using the placement buttons. This means that you can place multiple design triangles within the hexagon.