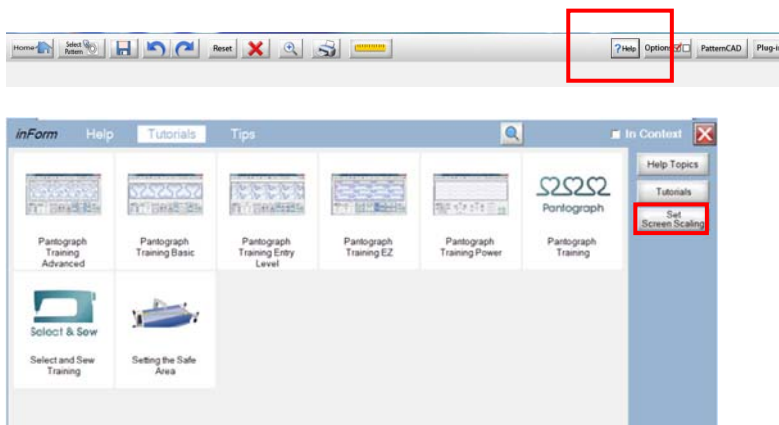


Quilter's Creative Touch 5 PRO

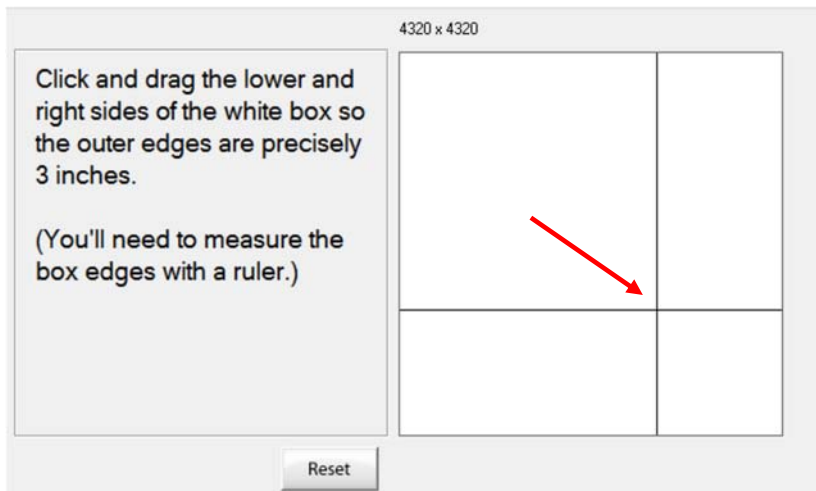
Set Screen Scaling

In QCT5 it is referred to as screen scaling or calibration. This allows us to get more exact measurements which is very important when fitting designs into blocks or pantographs (avoiding edge to edge designs finishing short when stitching out a row). In other words what is shown on the screen portrays what will be quilted.

1. Measure and cut a piece of paper 3" square. (This needs to be accurate)
2. In the home screen select **Pantograph**, note: you may be asked to **Set the safe Area**, is so simply follow the prompts



3. From the top tool bar tap **Help**
4. Select **Set Screen Scaling**
5. Now **Place** the 3" square peice of paper on the screen that appears.



6. Using your stylus or fingers, drag the bottom right intersecting corner, displayed on the screen, down to match your 3" square piece of paper.

7. Select [OK](#)

Well done, you will now have accurate measurements when using the ruler within the software, and true scaling on screen. This is very helpful in the quilting process

