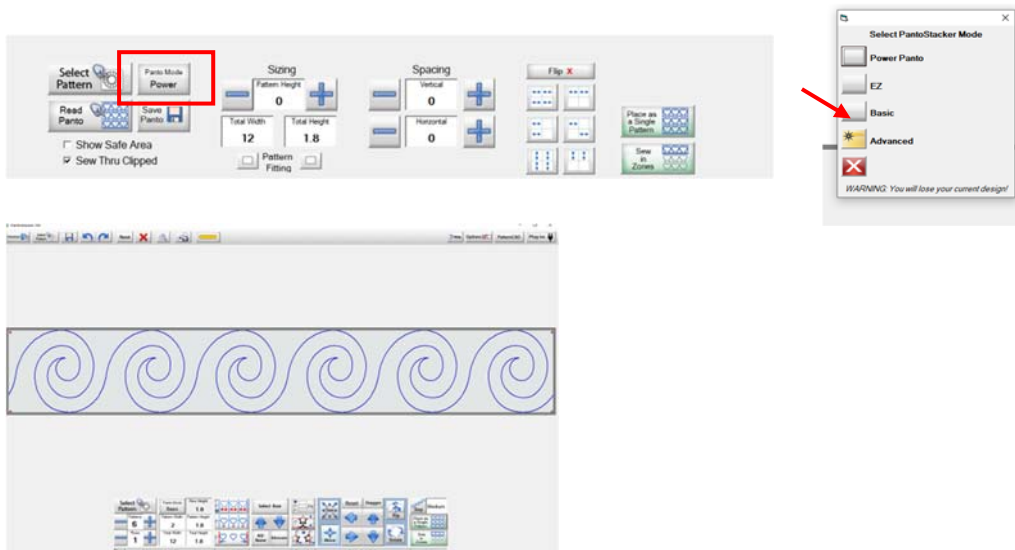


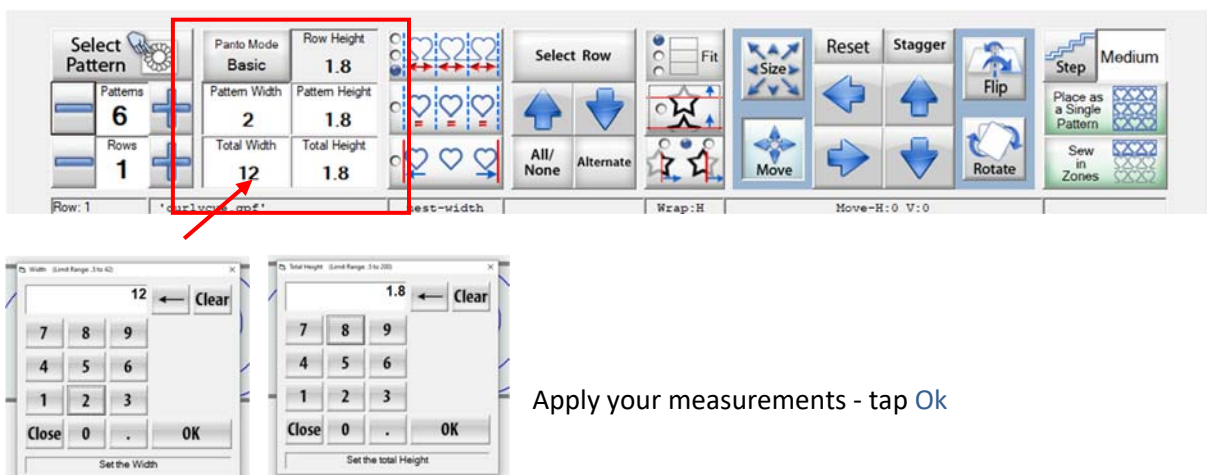
# Quilter's Creative Touch 5 PRO

## How to Quilt Simple Sashing's

To be able to do this tutorial I will be assuming that you already know how to set up a Panto, as we need the design to be continuous. I have set up my design using a built-in design from QCT5 and have also selected **Basic Mode** - to change modes tap the **Panto Mode Icon** and from the pop up menu tap **Basic**

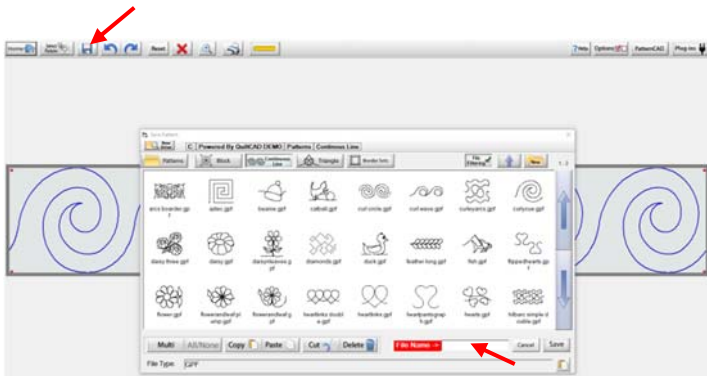


The design is call **Curlycue**. To Set the **Height** and **Width** of the pattern tap - **Total Width** then tap **Total Height**



Apply your measurements - tap **Ok**

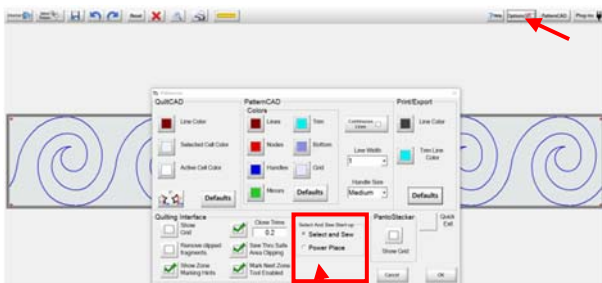
Once you are happy with design tap the [Save](#) Icon from the tool bar at the top of your screen -



Tap the [File Name](#) box at the bottom right of your screen and the Touch Keyboard will pop up name your design and tap [Enter](#) – then tap [Save](#) at the bottom right of the screen. Your design is now saved.



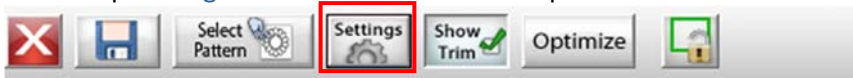
I like to turn off Power placement off - from the tool bar at the top of your screen tap the [Options](#) icon and make sure the you have [Select and Sew](#) active.



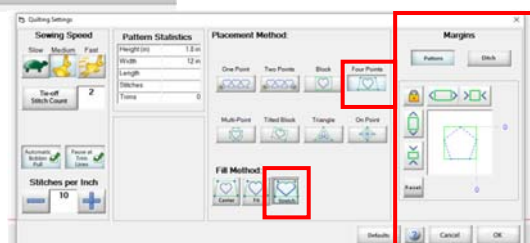
Now go ahead and tap [Place as a Single Pattern](#)



Now Tap [Settings](#) from the tool bar at the top of the screen

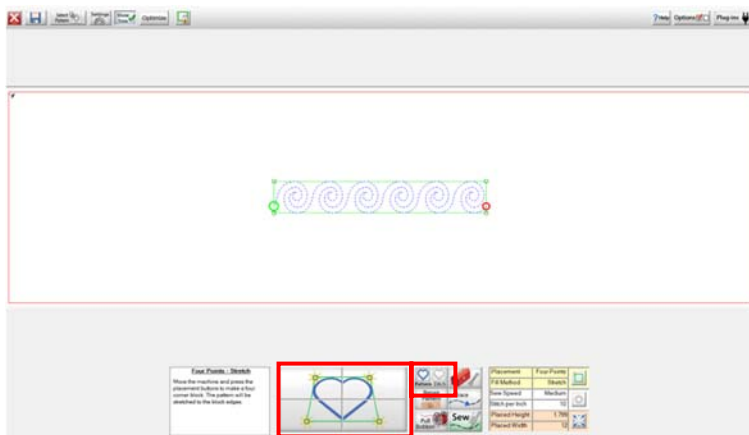


It will open our [Options](#) menu we can select our placement method I like [Four Point](#) scaling and have selected [Stretch to Fill](#) Method.



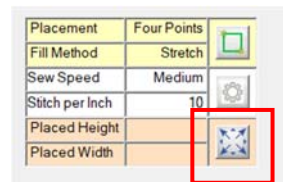
I can now place my design in my sashing on my quilt using the Four Point scaling method. You can also set

margins - ie: stitch 1/8 inside the area. Tap the **Margins** icons for your desired settings, Tap **Ok**

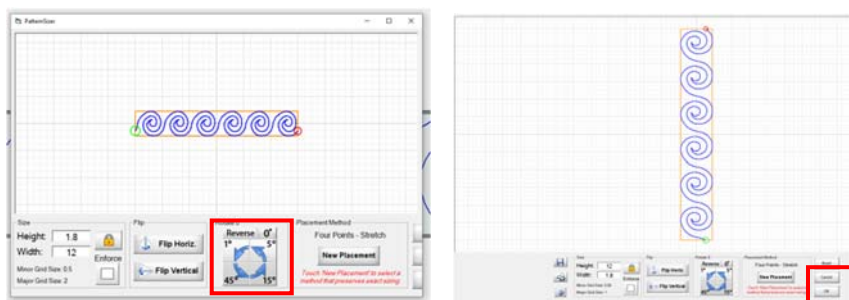


I'm now ready to go ahead place the design and quilt my sashing. You can also ditch around the quilting design by tapping the **Ditch** icon

To stitch the vertical sashings tap the **Height Width** Icon at the bottom right of the screen



This will now open our pattern Sizer screen



I can now rotate the design for vertical placement by tapping the **Rotate** icon, then tap **OK**

This message will then appear on the screen - tap **YES**, you are now ready to place your quilting design in your vertical sashings.

