



# JABROOT STEEL

## GROUP OF COMPANIES

### PRODUCT & SERVICES PORTFOLIO

#### Our Divisions:

- Steel materials distribution
- Steel products manufacturing
- Fabrication services
- Real-Estate division
- Hardware trading



Jabrootsteel@gmail.com / Enquiry@jabrootsteel.com

025545056 (H.O) / 025520601 (M-39 Office)

[www.jabrootsteel.com](http://www.jabrootsteel.com)



**JABROOT STEEL**  
**SUPPLY COMPANY LLC**

## **STEEL MATERIALS DISTRIBUTION DIVISION**

**This is our Steel materials distribution division. We specialize in stocking products such as Mild/Carbon Steel pipes, tubes, angles, shafts, round/square bars, mesh, gratings, plates, GI plates and pipes, aluminum sheets, universal beams/columns, and many more.**

**Look at the product details below. Infrequent sizes and higher grades that are less in demand and not mentioned in the below section can also be arranged for orders of high quantity. We also supply Stainless Steel materials of grade SS304 and SS316 - this category of materials is arranged only on orders of high volume.**

***Note: All sizes are not mentioned but can be arranged on orders of high quantity***



## PRODUCT DETAILS

### MS/GI PIPES

**GRADE A36 / A53**

*(For all the materials - Units are in Kg, m and mm)*

Size	Thickness	
	ERW	SCH 80 mm Seamless
21.3 mm/0.5"	1.2 mm to 2.7 mm	3.7 mm
26.3 mm/0.75"	0.9 mm to 2.87 mm	3.91 mm
33.3 mm/1"	1.0 mm to 3.37 mm	4.55mm
42.3 mm/1.25"	1.0 mm to 3.5 mm	4.85 mm
48.3 mm/1.5"	1.2 mm to 3.6 mm	5.08 mm
60.3 mm/2"	1.2 mm to 3.9 mm	5.54 mm
76.3 mm/2.5"	1.5 mm to 5.1 mm	7 mm
89.3 mm/3"	1.5 mm to 5.5 mm	7.6mm
114.3 mm/4"	1.8 mm to 6 mm	8.5mm
168.27mm/6"	SCH 40 (7.11mm)	10.97mm
219.08mm/8"	SCH 40 (8.18mm)	12.7mm
273mm/10"	SCH 40 (9.27mm)	15.09mm
323.9mm/12"	SCH 40 (10.31mm)	17.48mm





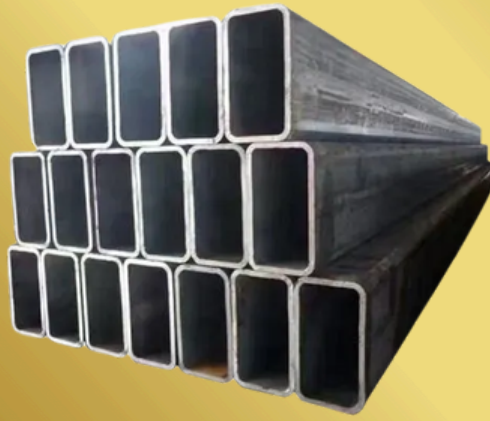
## PRODUCT DETAILS

### MS SHS TUBES

GRADE ASTM A500

SIZE	THICKNESS
12 x 12	1.2 - 1.5 mm
16 x 16	1.2 - 1.5 mm
19 x 19	1.2 - 1.8 mm
25 x 25	1.2 - 3 mm
30 x 30	1.2 - 3 mm
38 x 38	1.2 - 4 mm
50 x 50	1.2 - 5 mm
60 x 60	1.8 - 5 mm
75 x 75	1.8 - 6 mm
80 x 80	1.8 - 5 mm
100 x 100	1.8 - 8 mm
120 x 120	3 - 8 mm
150 x 150	3 - 8 mm



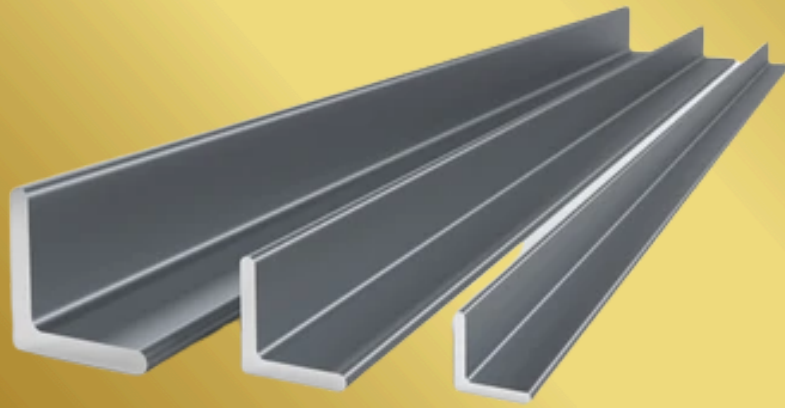


## PRODUCT DETAILS

### MS RHS TUBES

GRADE ASTM A500

SIZE (mm)	THICKNESS
40 x 20	1.5 - 3mm
50 x 25	1.5 - 3mm
60 x 30	1.5 - 3mm
60 x 40	2 - 3mm
80 x 40	1.2 - 5mm
100 x 50	2 - 6mm
120 x 60	3 - 6mm
150 x 75	4 - 6mm
200 x 100	4 - 6mm

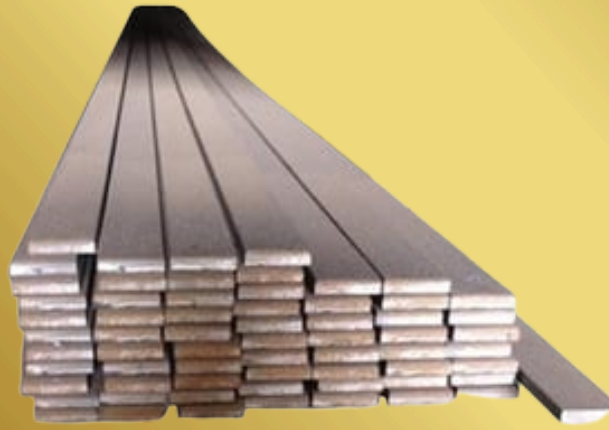


## PRODUCT DETAILS

**MS ANGLE BAR  
(EQUAL LENGTH)**

**GRADE S275**

SIZE	THICKNESS
25x25	3-4mm
30x30	3-4mm
40x40	3-6mm
50x50	3-6mm
60x60	5-8mm
70x70	6-8mm
75x75	5-8mm
100x100	6-10mm
150x150	10-12mm
200x200	16-20mm



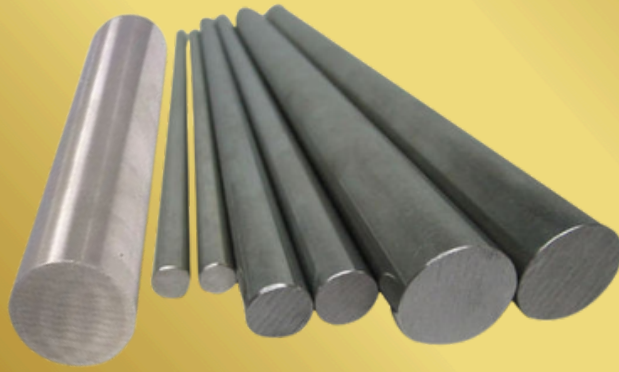
## PRODUCT DETAILS

### MS FLATBAR

#### GRADE S275

Size (mm)	THICKNESS (mm)
12	4-5
19	3-4.5
25	3-8
30	3-8
38	3-12
50	3-12
60	5
75	6-8
100	5-10
125	6-12
150	6-12
200	8-16





## PRODUCT DETAILS

**MS ROUND BAR/  
SHAFTING BAR**

**GRADE S275**

ROUND BAR
SIZE
6 mm
8 mm
10 mm
12 mm
14 mm
16 mm
18 mm
20 mm
25 mm

SHAFTING BAR
SIZE
6 mm
8 mm
10 mm
12 mm
14 mm
16 mm
18 mm
20 mm
25 mm
30 mm
32 mm
40 mm
45 mm
50 mm
60 mm
75 mm

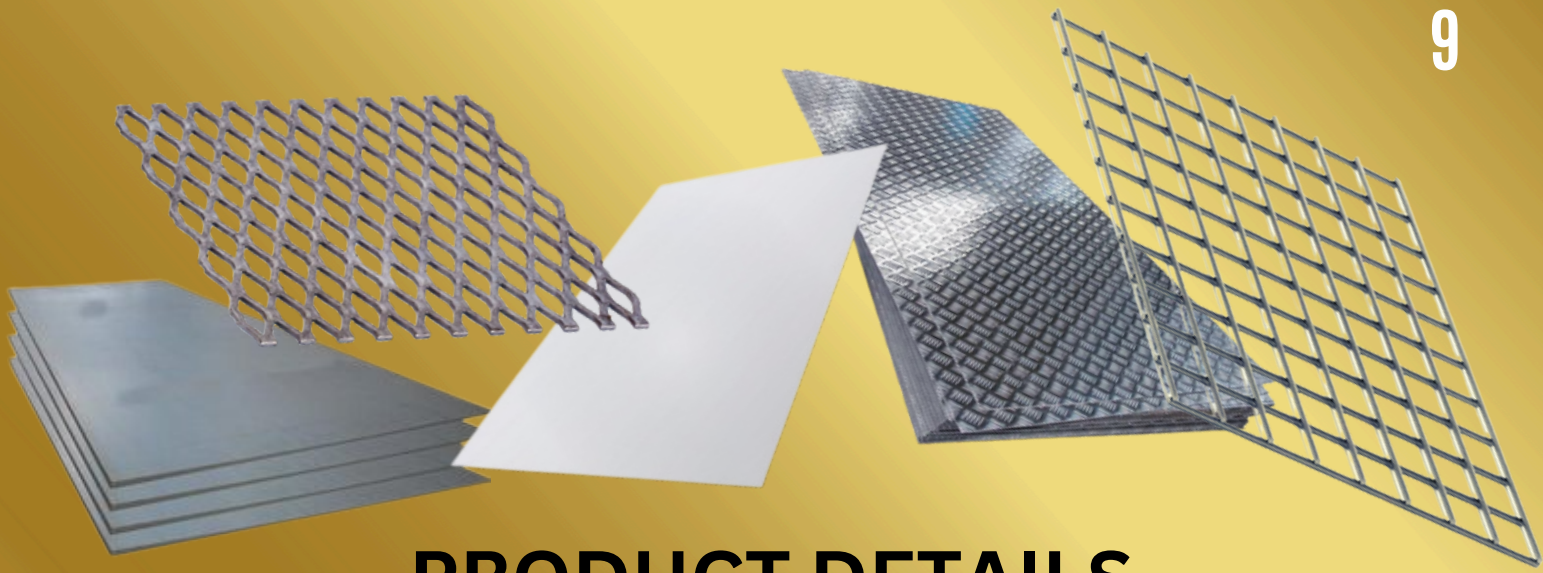


## PRODUCT DETAILS

**MS SQUARE BAR**

**GRADE S275 JR**

SIZE
10 x 10
12 x 12
14 x 14
16 x 16
20 x 20
25 x 25
30 x 30
40 x 40



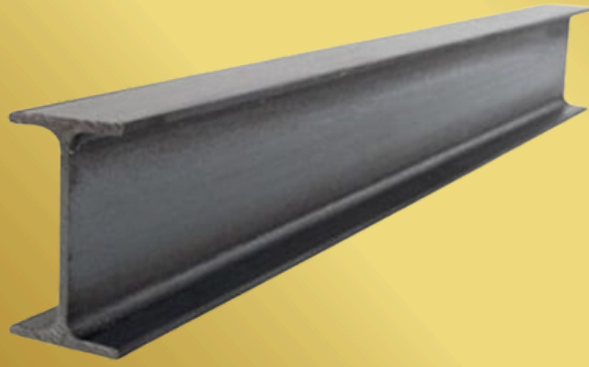
# PRODUCT DETAILS

## PLATES / MESH

GRADE S275 / S355 / A1100 (Aluminium)

Type	Size	Thickness
Cold-rolled sheets (CR)	4x8 ft (1.224 x 2.442 m)	0.7-0.9 mm
Hot Rolled Sheets (HR/MS)	4x8 ft (1.224 x 2.442 m)	1.2-100 mm
MS Chequered Plates	4x8 ft (1.224 x 2.442 m)	1.8-10 mm
MS Chequered Plates	1.5 x 6 m	2.7-10 mm
MS Plates	2 x 6 m	4-50 mm
GI SHEET	4x8 ft (1.224 x 2.442 m)	0.5-3.7 mm
Aluminium Sheets	4x8 ft (1.224 x 2.442 m)	0.7-10 mm
Aluminium Chequered Sheets	4x8 ft (1.224 x 2.442 m)	1.5-4 mm
MS Expanded mesh	4x8 ft (1.224 x 2.442 m)	2-5 mm
GI welded mesh	4x8 ft (1.224 x 2.442 m) Grid- 25x25	3-4 mm
GI welded mesh	4x8 ft (1.224 x 2.442 m) Grid- 50x50	3-4 mm





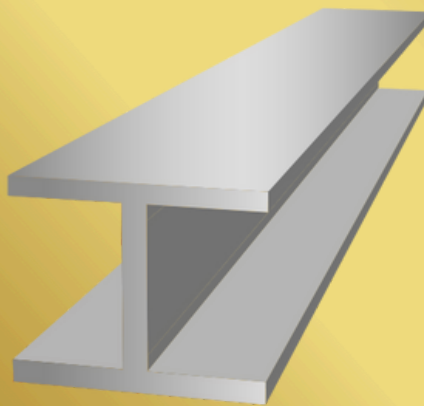
## PRODUCT DETAILS

### I-beams

VARIANTS AVAILABLE: HEA / HEB / JIS / IPE / IPEAA

GRADE S275 / S355

SIZE
100 x 55 x 6.72 kg/m
100 x 55 x 8.10 kg/m
120 x 64 x 8.36 Kg/m
140 x 73 x 10.05 Kg/m
150 x 75 x 14 Kg/m
160 x 82 x 12.31 Kg/m
200 x 100 x 18 Kg/m
200 x 100 x 21.3 Kg/m
250 x 125 x 25.7 Kg/m
300 x 150 x 32 Kg/m
400 x 140 x 62.60 Kg/m
500 x 180 x 87.7 Kg/m
600 x 210 x 122.6 Kg/m



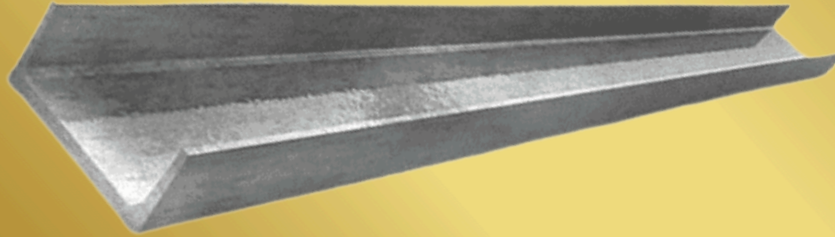
## PRODUCT DETAILS

### H-beams

VARIANTS AVAILABLE: HEA / HEB / JIS / IPE / IPEAA

GRADE S275 / S355

SIZE
100 x 100 x 16.9 Kg/m
125 x 125 x 23.8 Kg/m
150 x 150 x 31.5 Kg/m
152 x 152 x 30 Kg/m
160 x 160 x 42.6 Kg/m
200 x 200 x 46 Kg/m
200 x 200 x 49.9 Kg/m
250 x 250 x (64.4 - 82.2 kg/m)
300 x 300 x (84.5 - 106 Kg/m)
350 x 350 x (106 - 159 Kg/m)



## PRODUCT DETAILS

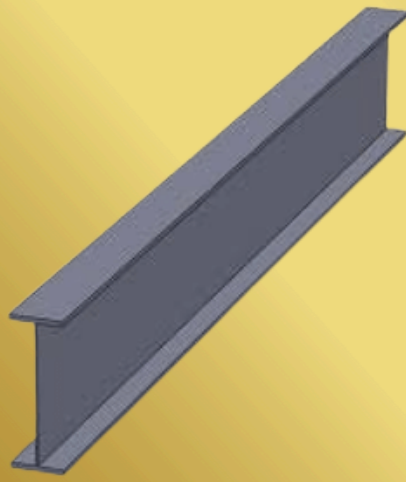
**U-CHANNEL /  
C-CHANNEL**

**VARIANTS AVAILABLE: UPN / PFC**

**GRADE S275 / S355**

SIZE
50 x 25 x 3.68 Kg/m
100 x 50 x 7.36 Kg/m
100 x 50 x 9.36 Kg/m
100 x 50 x 10.65 Kg/m
125 x 65 x 11.66 Kg/m
125 x 65 x 13.40 Kg/m
150 x 75 x 14.66 Kg/m
150 x 75 x 18.60 Kg/m
200 x 75 x 18.40 Kg/m
200 x 75 x 25.30Kg/m
250 x 78 x 28 kg/m
305 x 102 x 46.18 Kg/m





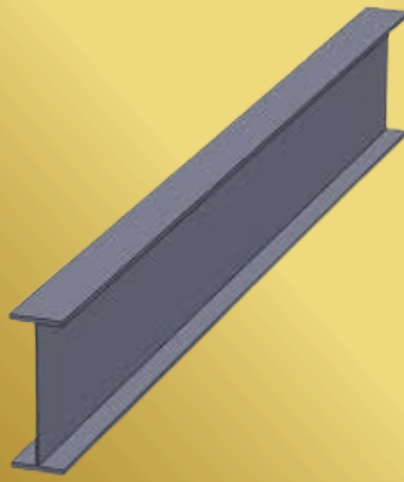
## PRODUCT DETAILS

### U-beams

**GRADE S275 / S355**

SIZE
127 x 76 x 13 Kg/m
152 x 89 x 16 Kg/m
178 x 102 x 19 Kg/m
203 x 102 x 23 Kg/m
203 x 133 x 25 Kg/m
203 x 133 x 30 Kg/m
254 x 102 x 22 Kg/m
254 x 102 x 25 Kg/m
254 x 102 x 28 Kg/m
254 x 146 x 31 Kg/m
254 x 146 x 37 Kg/m
254 x 146 x 43 Kg/m
305 x 102 x 25 Kg/m
305 x 102 x 28 Kg/m
305 x 102 x 33 Kg/m

SIZE
305 x 127 x 37 Kg/m
305 x 127 x 42 Kg/m
305 x 127 x 48 Kg/m
305 x 165 x 40 Kg/m
305 x 165 x 46 Kg/m
305 x 165 x 54 Kg/m
356 x 127 x 33 Kg/m
356 x 127 x 39 Kg/m
356 x 171 x 45 Kg/m
356 x 171 x 51 Kg/m
356 x 171 x 57 Kg/m
356 x 171 x 67 Kg/m
406 x 140 x 39 Kg/m
406 x 140 x 46 Kg/m
406 x 178 x 67 Kg/m
406 x 178 x 74 Kg/m

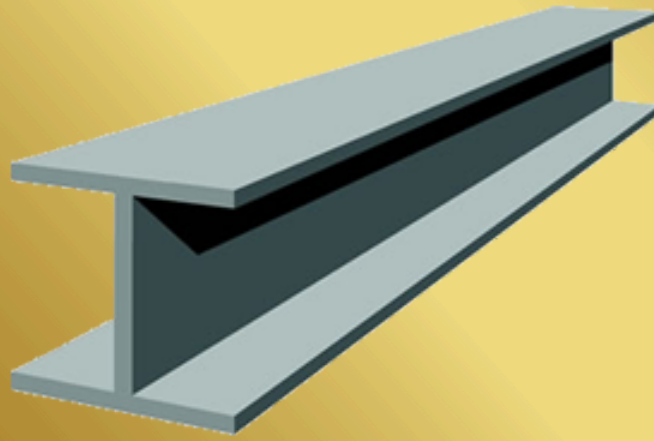


## PRODUCT DETAILS

### U-beams

GRADE S275 / S355

SIZES		
406 x 178 x 54 Kg/m	533 x 210 x 109 Kg/m	838 x 292 x 176 Kg/m
406 x 178 x 60 Kg/m	533 x 210 x 122 Kg/m	838 x 292 x 194 Kg/m
406 x 178 x 67 Kg/m	610 x 229 x 101 Kg/m	838 x 292 x 226 Kg/m
406 x 178 x 74 Kg/m	610 x 229 x 113 Kg/m	914 x 305 x 201 Kg/m
457 x 152 x 52 Kg/m	610 x 229 x 125 Kg/m	914 x 305 x 224 Kg/m
457 x 152 x 60 Kg/m	610 x 229 x 140 Kg/m	914 x 305 x 253 Kg/m
457 x 152 x 67 Kg/m	610 x 305 x 149 Kg/m	914 x 305 x 289 Kg/m
457 x 152 x 74 Kg/m	610 x 305 x 179 Kg/m	914 x 419 x 343 Kg/m
457 x 152 x 82 Kg/m	610 x 305 x 238 Kg/m	914 x 419 x 388 Kg/m
457 x 191 x 67 Kg/m	686 x 254 x 125 Kg/m	1016 x 305 x 222 Kg/m
457 x 191 x 74 Kg/m	686 x 254 x 140 Kg/m	1016 x 305 x 249 Kg/m
457 x 191 x 82 Kg/m	686 x 254 x 152 Kg/m	1016 x 305 x 272 Kg/m
457 x 191 x 89 Kg/m	686 x 254 x 170 Kg/m	1016 x 305 x 314 Kg/m
457 x 191 x 98 Kg/m	762 x 267 x 134 Kg/m	1016 x 305 x 349 Kg/m
533 x 210 x 82 Kg/m	762 x 267 x 147 Kg/m	1016 x 305 x 393 Kg/m
533 x 210 x 92 Kg/m	762 x 267 x 173 Kg/m	1016 x 305 x 438 Kg/m
533 x 210 x 101 Kg/m	762 x 267 x 197 Kg/m	1016 x 305 x 487 Kg/m



## PRODUCT DETAILS

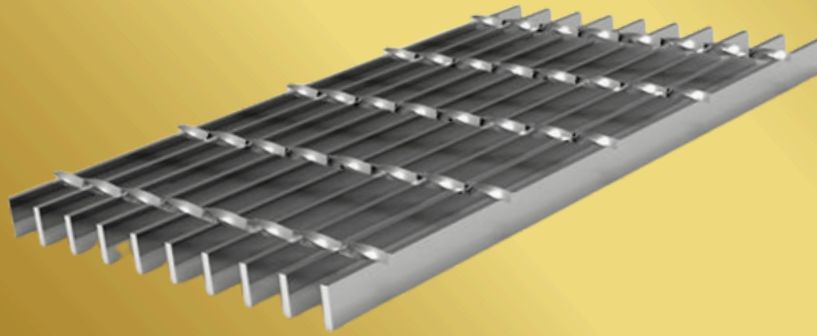
### U-Columns

GRADE S275 / S355

SIZE
152 x 152 x 23 Kg/m
152 x 152 x 30 Kg/m
152 x 152 x 37 Kg/m
203 x 203 x 46 Kg/m
203 x 203 x 52 Kg/m
203 x 203 x 60 Kg/m
203 x 203 x 71 Kg/m
203 x 203 x 86 Kg/m
254 x 254 x 73 Kg/m
254 x 254 x 89 Kg/m
254 x 254 x 107 Kg/m
254 x 254 x 132 Kg/m
254 x 254 x 167 Kg/m
305 x 305 x 97 Kg/m
305 x 305 x 118 Kg/m
305 x 305 x 137 Kg/m

SIZE
305 x 305 x 158 Kg/m
305 x 305 x 198 Kg/m
305 x 305 x 240 Kg/m
305 x 305 x 283 Kg/m
356 x 368 x 129 Kg/m
356 x 368 x 153 Kg/m
356 x 368 x 177 Kg/m
356 x 368 x 202 Kg/m
356 x 406 x 235 Kg/m
356 x 406 x 287 Kg/m
356 x 406 x 340 Kg/m
356 x 406 x 393 Kg/m
356 x 406 x 467 Kg/m
356 x 406 x 551 Kg/m
356 x 406 x 634 Kg/m



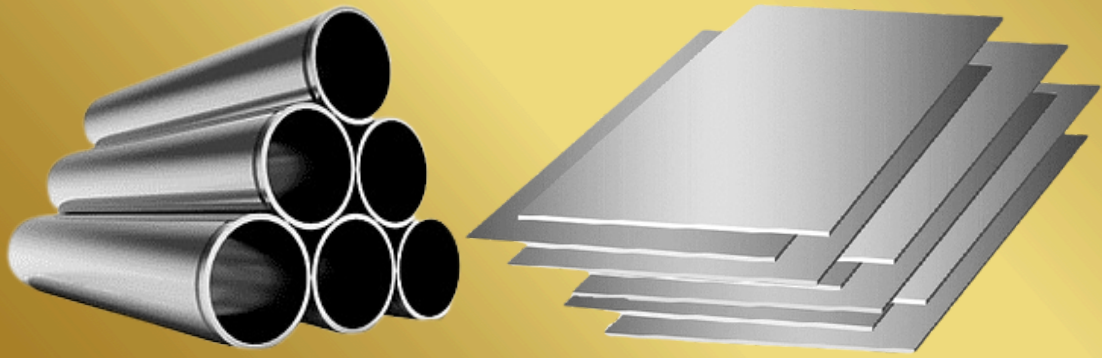


## PRODUCT DETAILS

### Gratings

- **GRADE S275 (GALVANIZED)**
- **OUTSIDE DIMENSION: 90 x 600 cm**
- **GAP SIZE: 100 x 40 mm**

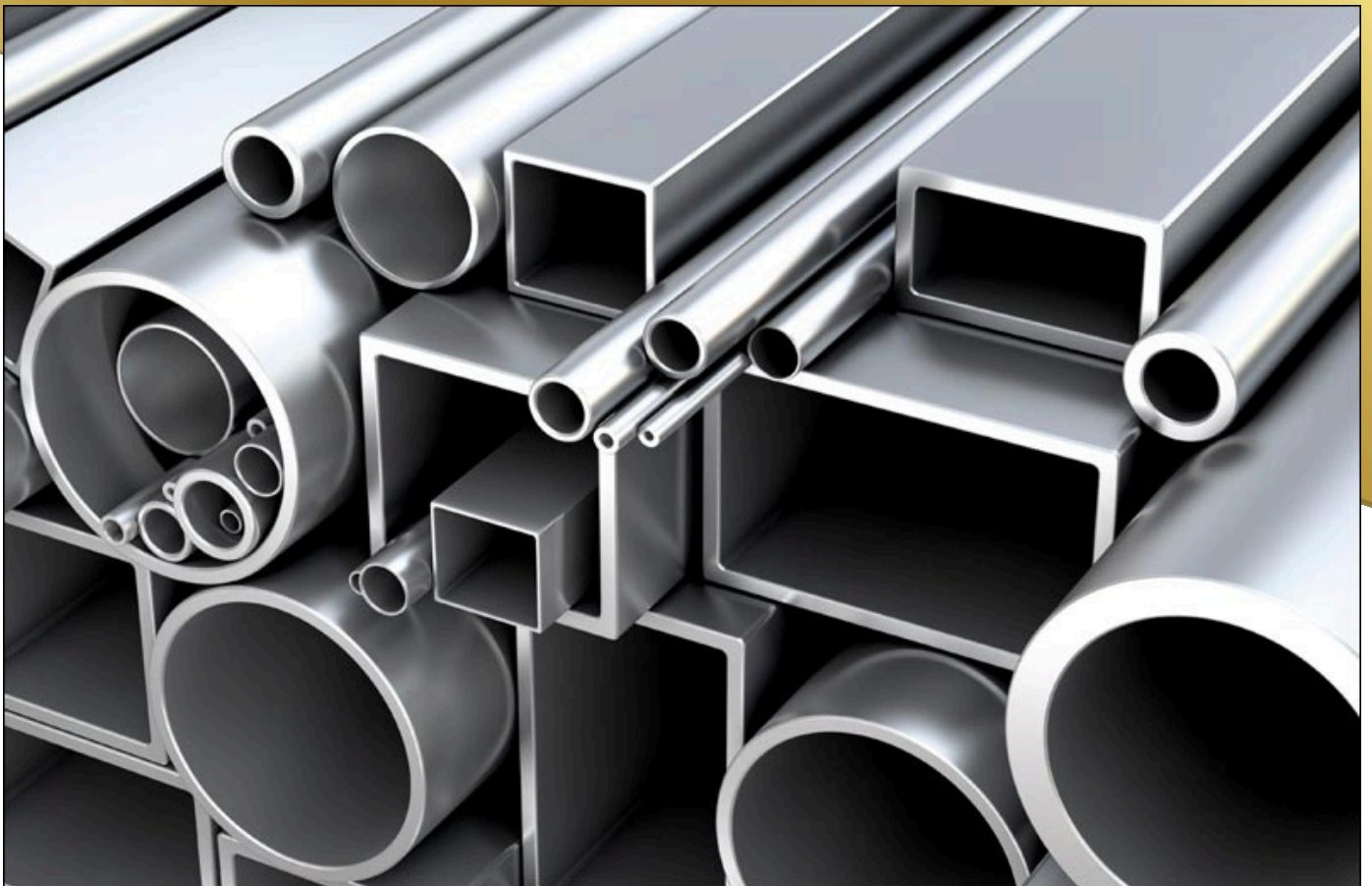
SIZE
25 x 3 mm
25 x 4 mm
30 x 3 mm
30 x 4 mm
38 x 3 mm
38 x 4 mm
50 x 4 mm



## PRODUCT DETAILS

### STAINLESS STEEL MATERIALS

- **GRADE SS 304 AND SS 316**
- **AVAILABLE IN PLATES AND HOLLOW SECTIONS**
- **AVAILABLE ON CUSTOM ORDERS OF HIGH VOLUME**





# ***JABROOT BLACKSMITH & WELDING WORKSHOP CO.***

## **STEEL PRODUCTS MANUFACTURING & FABRICATION SERVICES**

**THIS DIVISION CONSISTS OF DIFFERENT BRANCHES. IN ONE, WE ARE SPECIALIZED IN MAKING TRANSPORTATION TANKERS LIKE DIESEL/ DRINKING WATER/ NON-DRINKING WATER/ SEWAGE. OTHER THAN THAT WE ALSO MANUFACTURE, REMODEL & REPAIR HEAVY VEHICLE CHASSIS, TRAILERS, PICKUP BODIES. WE ALSO MAKE OTHER PRODUCTS LIKE METAL PALLETS & TRAYS, STORAGE CAGES, FUEL TANKS & MORE.**

**ON THE OTHER DIVISION, WE PROVIDE FABRICATION SERVICES. (LOOK AT THE NEXT PAGES TO FIND OUT MORE)**



# SOME OF THE PRODUCTS MANUFACTURED BY US



## DIESEL TANKER

## NON-DRINKING WATER TANKER/ SEWAGE



## DRINKING-WATER TANKER



## CHASSIS



## FUEL STORAGE TANKS



## METAL PALLETS



## STORAGE CAGES

## METAL TRAYS



## METAL TOOL-BOX





CONSTRUCTION  
ELEVATORS

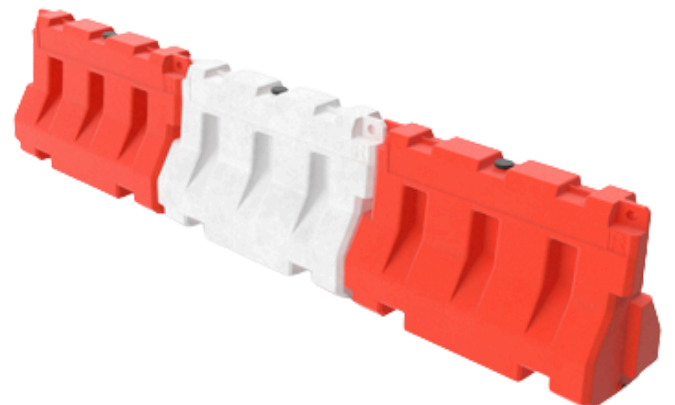
STEEL CYLINDERS



PICK-UP BODY



STRUCTURAL BODY  
FOR TRAFFIC  
BARRICADES



AND MORE....



# SERVICES & FACILITIES



WELDING  
(STICK/MIG/LASER)

METAL SHEETS  
PRESS BENDING



METAL SHEETS  
SHEARING

METAL SHEETS  
ROLLING





PIPES & SECTIONS  
ROLLING

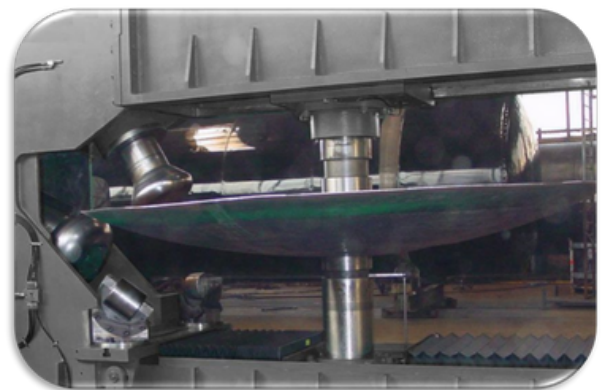
IRON WORKER



GAS CUTTING  
(AUTO / MANUAL)

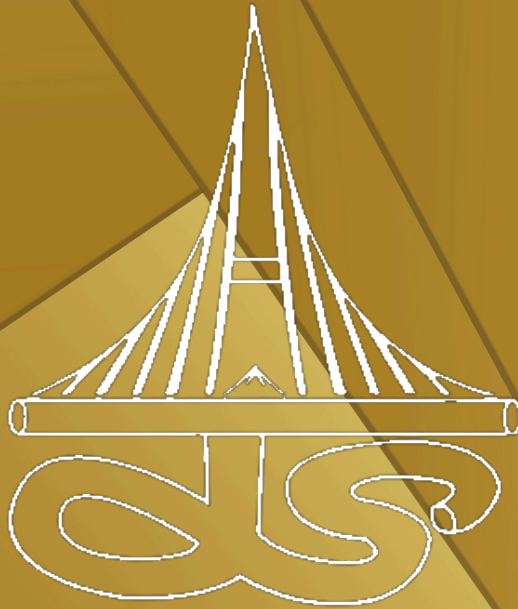


STEEL SHEET DISHING /  
FLANGING



CNC LASER  
CUTTING





# JABROOT STEEL

*Quality & Reliability at its best*