

# SPECIALTY CAPS

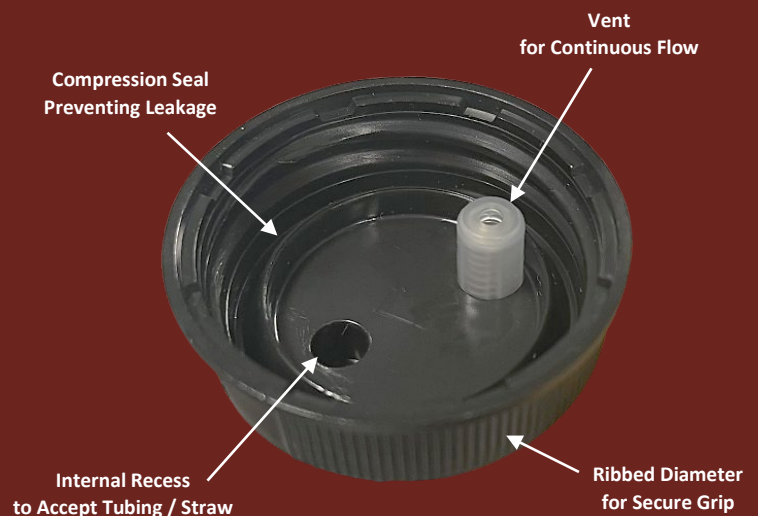


Genesis Industries, Inc. manufactures a wide variety of Specialty Caps including Vented Draw-Off, Non-Vented Draw-Off, Shipper Caps and Retaining Caps. Genesis Specialty Caps are corrosion, chemical and impact resistant and are made with High Density Polyethylene (HDPE). They are durable but also lightweight and easily recyclable. A compression seal on the inside diameter of the cap face engages against the inside diameter of the container as the cap is threaded into position, sealing the cap securely to the bottle preventing the potential for leakage when the container is inverted.



Vented Draw-Off Caps equalize the pressure of container contents allowing for continuous flow. These caps feature an internal recess on the cap's inside face to accept tubing or a straw which may be used to remove container contents without inverting the container. Various exit port configurations are offered to accommodate different methods of aspiration or gravitational feeding from a bottle or container.

Draw-Off Caps are available in Vented or Non-Vented. Caps can be custom manufactured to meet customer's specific needs, including custom colors.



For 40 years, Genesis Industries, Inc. has been manufacturing precision products that exceed our customers' expectations. We work directly with R & D Managers, Production Managers and Engineers to invent and design high quality products.



**Luer Lock Vented Draw-Off Caps**  
are designed to fit Luer Lock syringes. The exit port can be sealed with Luer Lock Cap & Strap and attached with a fixed lanyard.

**Available Neck Finishes:**  
20-410, 24-410, 24-415, 28-410, 33-400, 38-400, 38-410

**Available Port Types:**  
Luer Lock, Luer Lock with Cap & Strap



**Luer Slip / Oral Syringe Vented Draw-Off Caps**  
have an exit port inside diameter that fits the Genesis Oral B13 Syringe and other Luer Slip syringes for aspiration of the container contents. The exit port outside diameter fits the Genesis Oral B15 Syringe tip or equivalent configuration.

**Available Neck Finishes:**  
20-410, 24-410, 28-410, 38-400, 38-410, 45-410

**Available Port Types:**  
Luer Slip, Luer Slip with Cap & Strap



**Ribbed & Double Stepped Ribbed Vented Draw-Off Caps**  
are designed to accommodate variable tubing diameter on the exit port. Stepped and Ribbed ports are designed to affix a mechanical clamp to any tubing diameter assembly fitted to the exit port.

**Available Neck Finishes:**  
24-410, 33-410, 38-400, 38-410, 45-410

**Available Port Types:**  
Ribbed 9 MM, Ribbed 13 MM, Stepped Adapter, Double Stepped Ribbed 9 MM / 13 MM



**Barbed & Double Stepped Barbed Vented Draw-Off Caps**  
are designed to affix and secure variable tubing diameters to the exit port. The tubing is secured with reverse barbs preventing accidental tube removal and eliminates the use of mechanical clamps.

**Available Neck Finishes:**  
38-400, 38-410, 38-415, 43-410, 45-410, 70-410

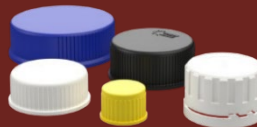
**Available Port Types:**  
Barbed 13 MM, Barbed 9.5 MM, Double Stepped Barbed 9.5 MM / 13 MM



**Barbed with Bottom Draw-Off Tube Exit Ports Draw-Off Caps**  
feature a barb on exit port designed to attach large tubing to the outside diameter of the stem for dispensing with an instrument. The bottom port allows tubing to be attached onto the channel allowing user to maintain container in an upright position and draw contents from the container.

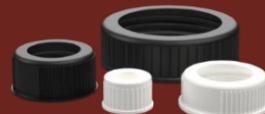
**Available Neck Finishes:**  
38-410, 58-410, 63-410

**Available Port Types:**  
Barbed 9 MM, 12.5 MM Draw-Off Tube



**Shipper Caps**  
have an outside diameter ribbed for a secure grip when sealing the cap onto the container or removing after use. These leak-proof caps prevent spills during transportation or storage. Shipper Caps are available with a compression seal to securely seal caps or a foam liner designed for chemical resistance and sealing.

**Available Neck Finishes:**  
20-410, 24-410, 28-410, 38-400, 45-410



**Retaining Caps**  
are manufactured to provide users a system to retain accessories to the container's mouth. The inner diameter of the cap is designed to retain spouts, nipples or droppers. Retaining caps have an outside diameter ribbed for a secure grip when sealing the cap onto the container or removing after use.

**Available Neck Finishes:**  
20-410, 28-410, 38-410